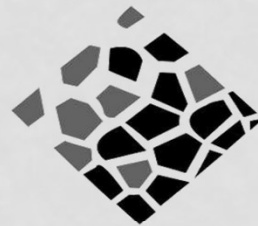



MICRO TOPPING



DECON SURFACE

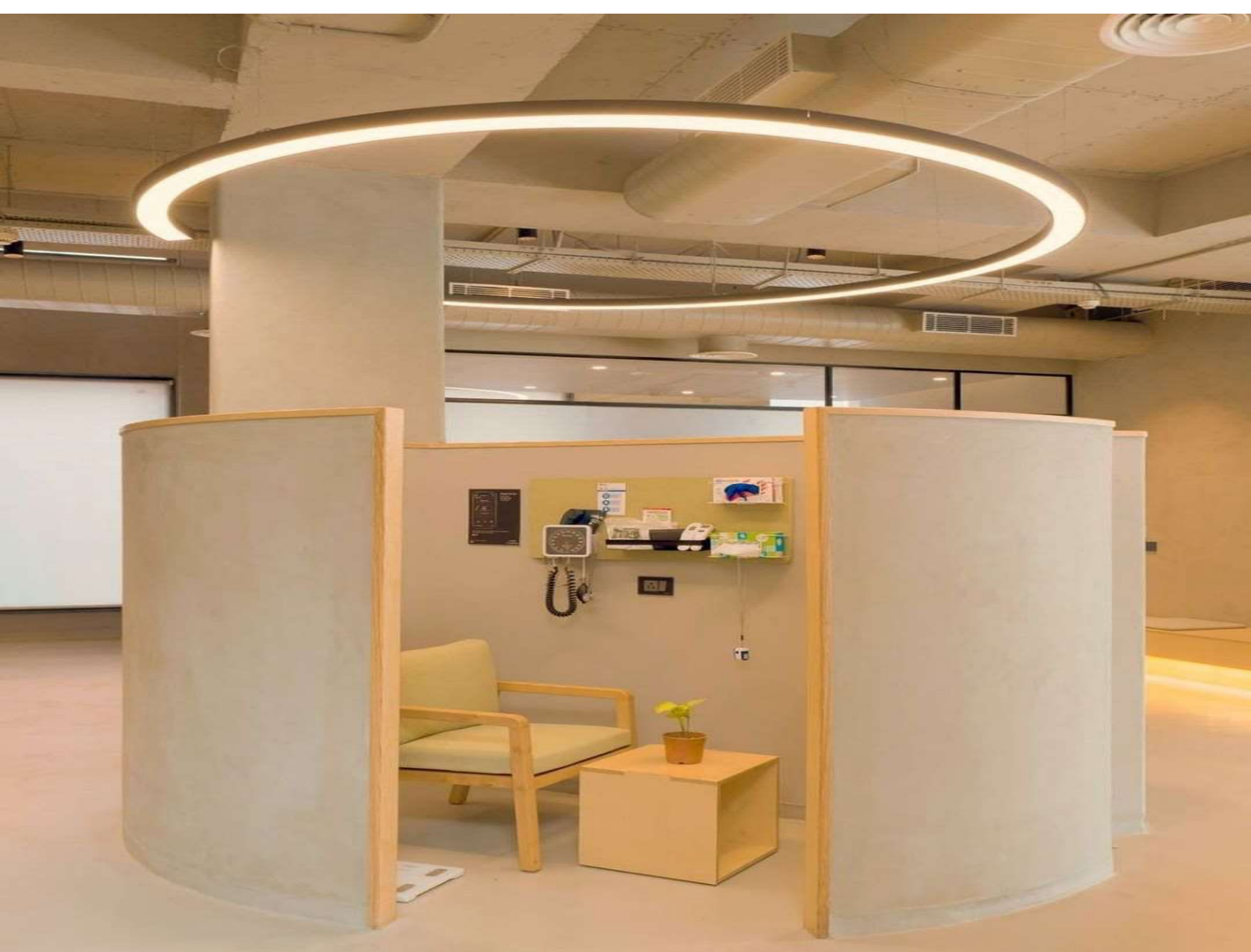


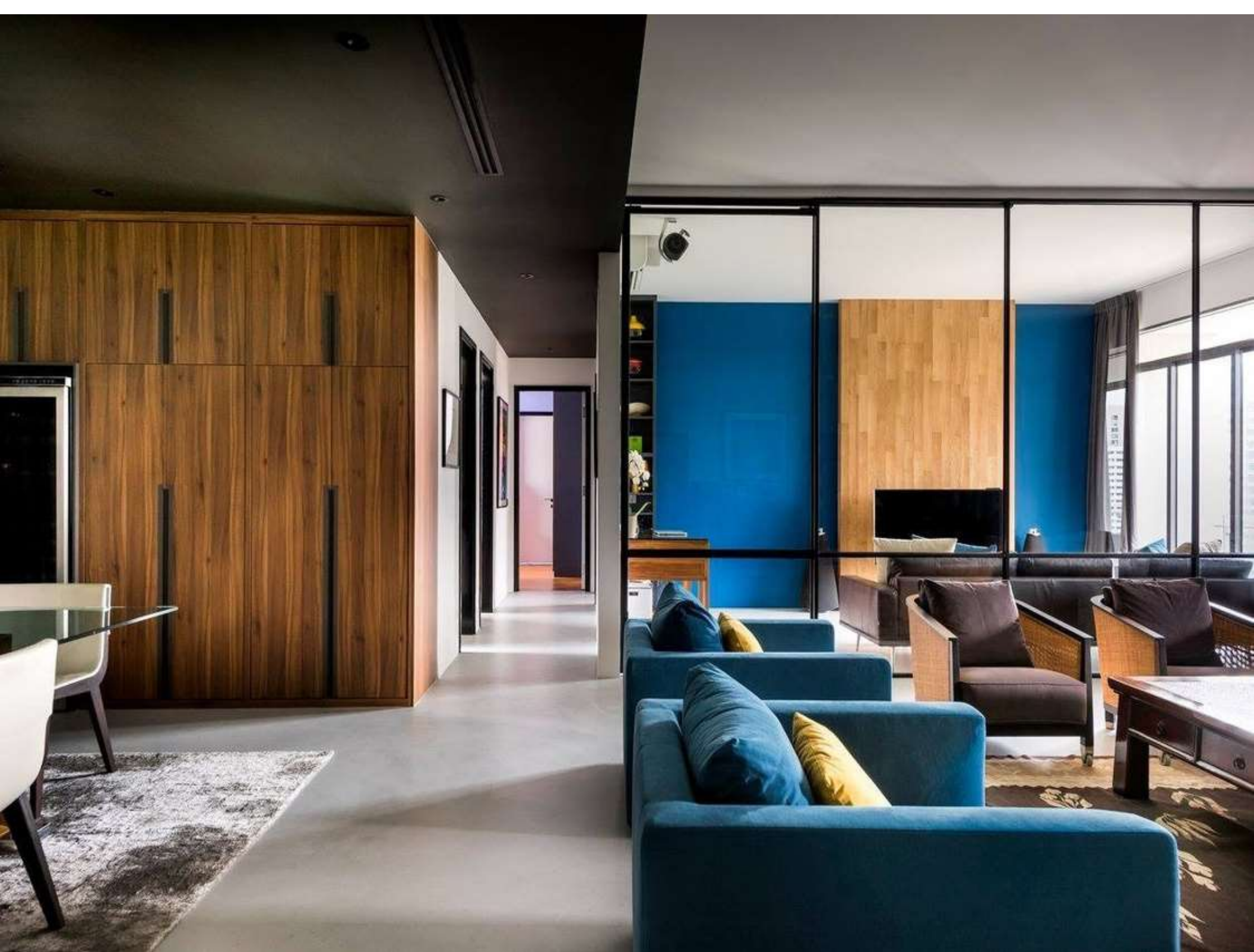
PRODUCT DESCRIPTION: Decopol Microtopping is a Polymer modified two component cementations based Coating system for creating a Seamless & mottled / Decorative surface finishes in Thin sections.

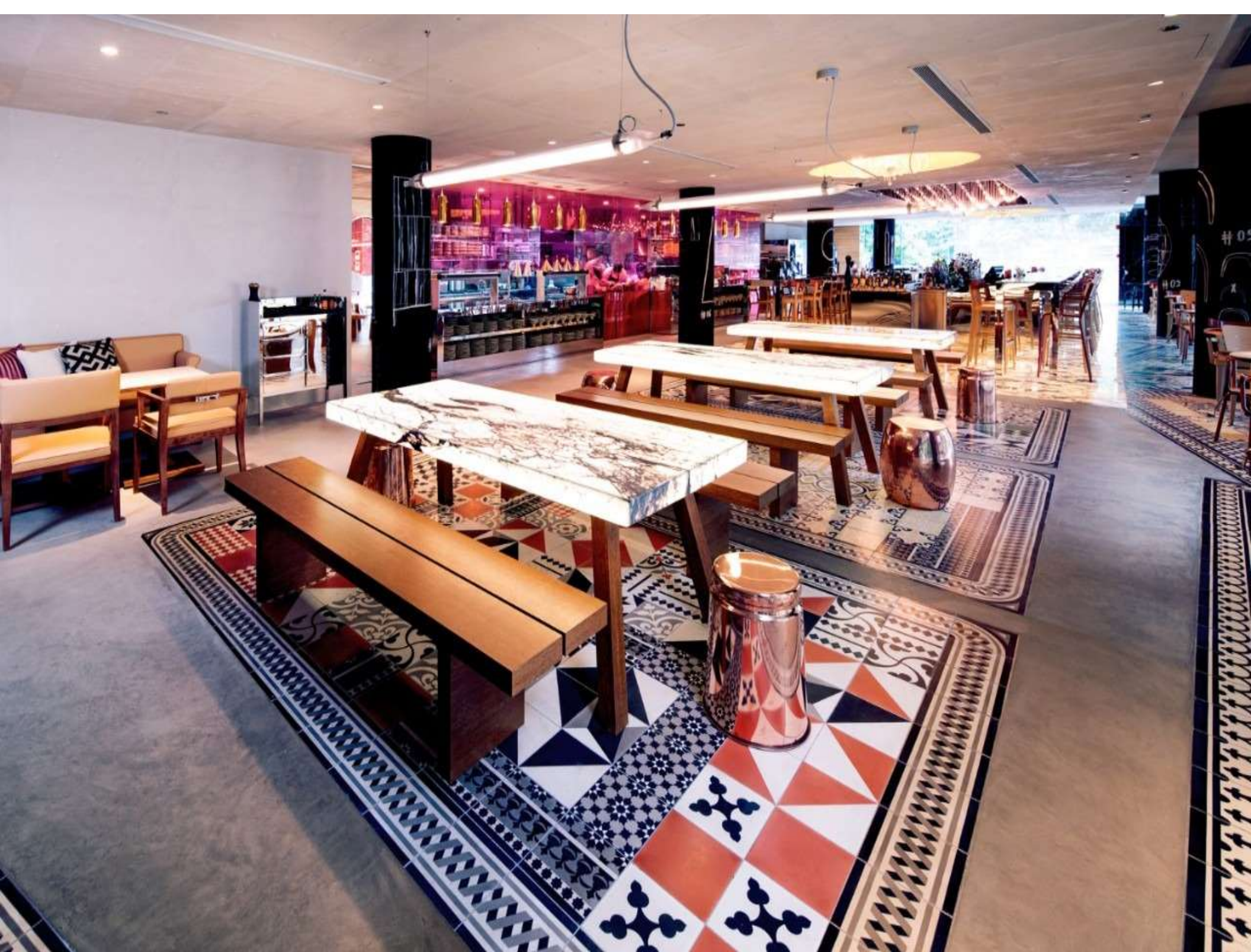
PURPOSE:

DPM Is used for creating seamless polymer modified cementitious overlays on floors & walls .DPM is ideal for creating seamless surfaces over existing substrates (in concrete, sand-cement screed, ceramics, self-leveling surface) and for renovating old floors, both interior and exterior. Its practicality and great looks make it ideal for homes, shops, showrooms, restaurants and hotels. DPM is not only ideal for floors, but also for covering vertical surfaces such as plasterboard or masonry walls, staircases, bathtubs or shower enclosures. DPM is also a protective concrete coating protecting against freeze thaw and salt corrosion. DPM has high abrasion resistance, flexural and compressive properties that make it the perfect product for concrete renovations.





















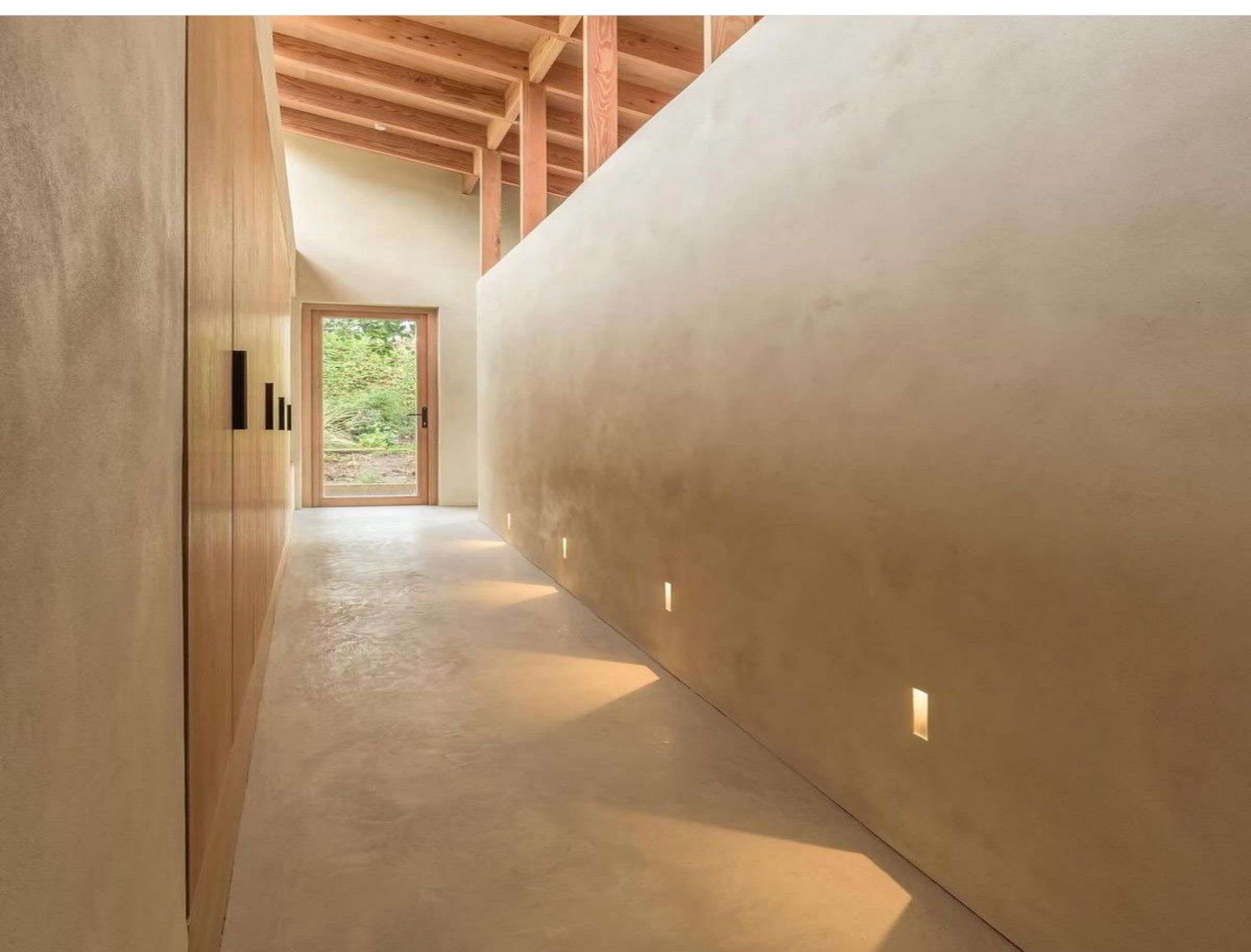


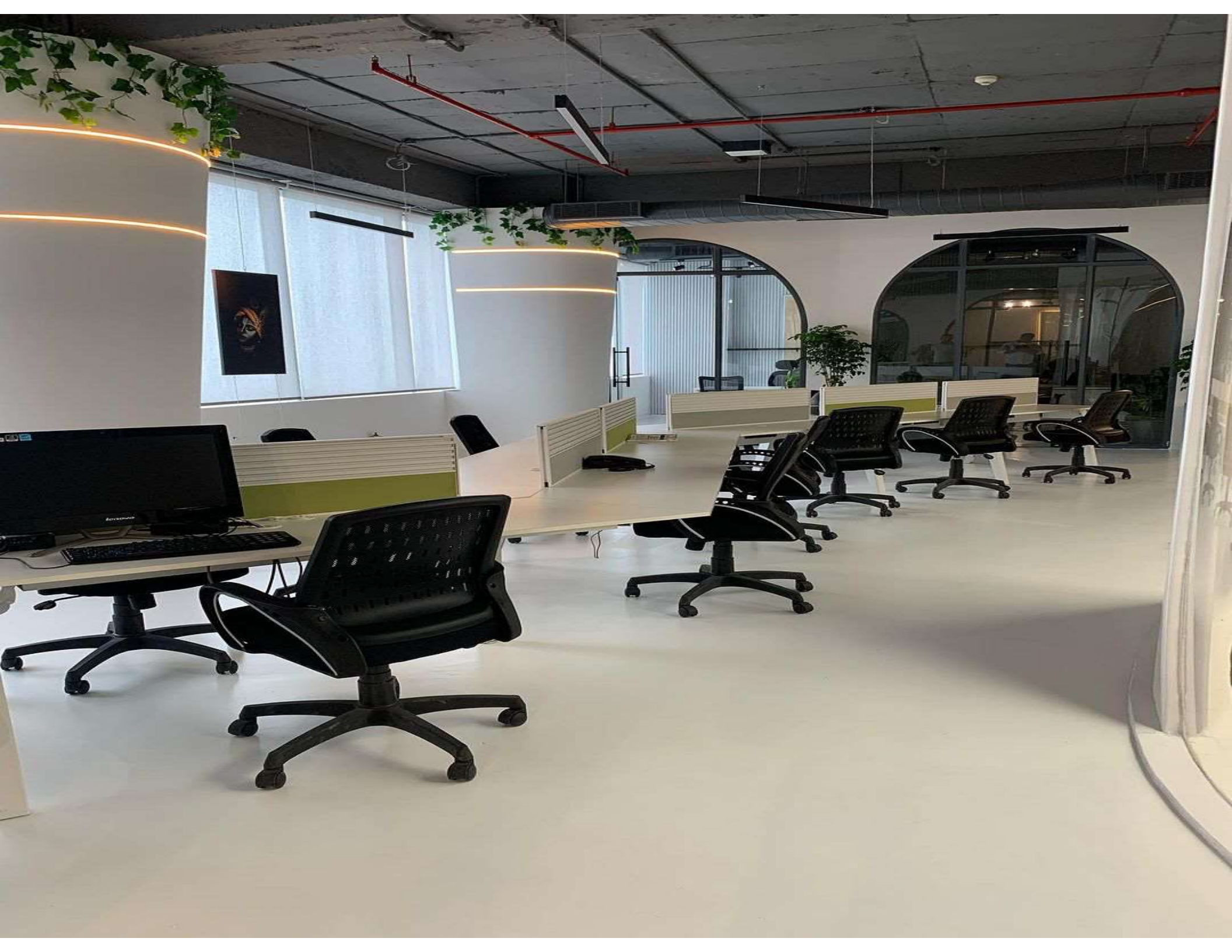
AMORTIZARE MAXIMĂ
PEITRU O ALERGARE FĂRĂ
COMPROMIS

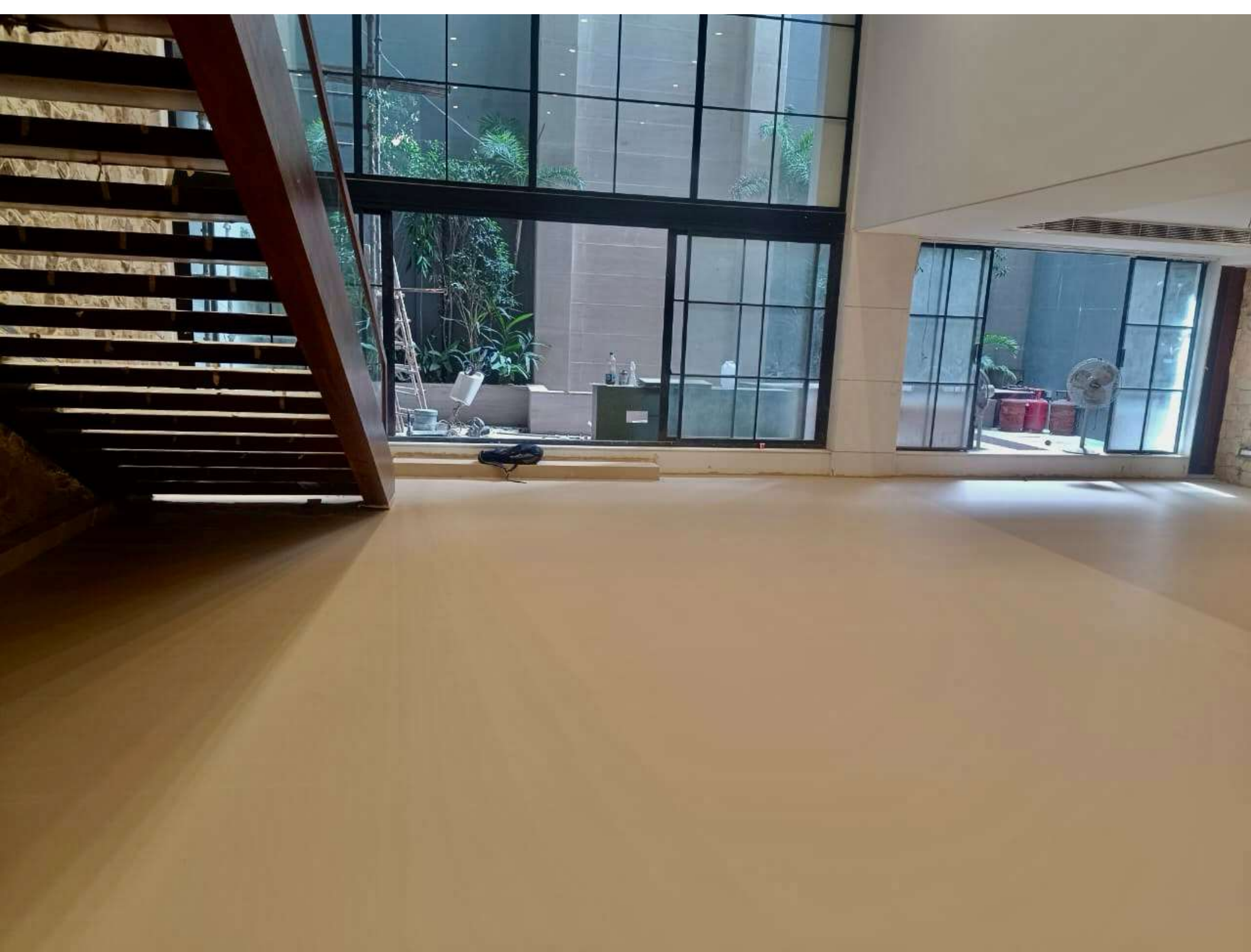


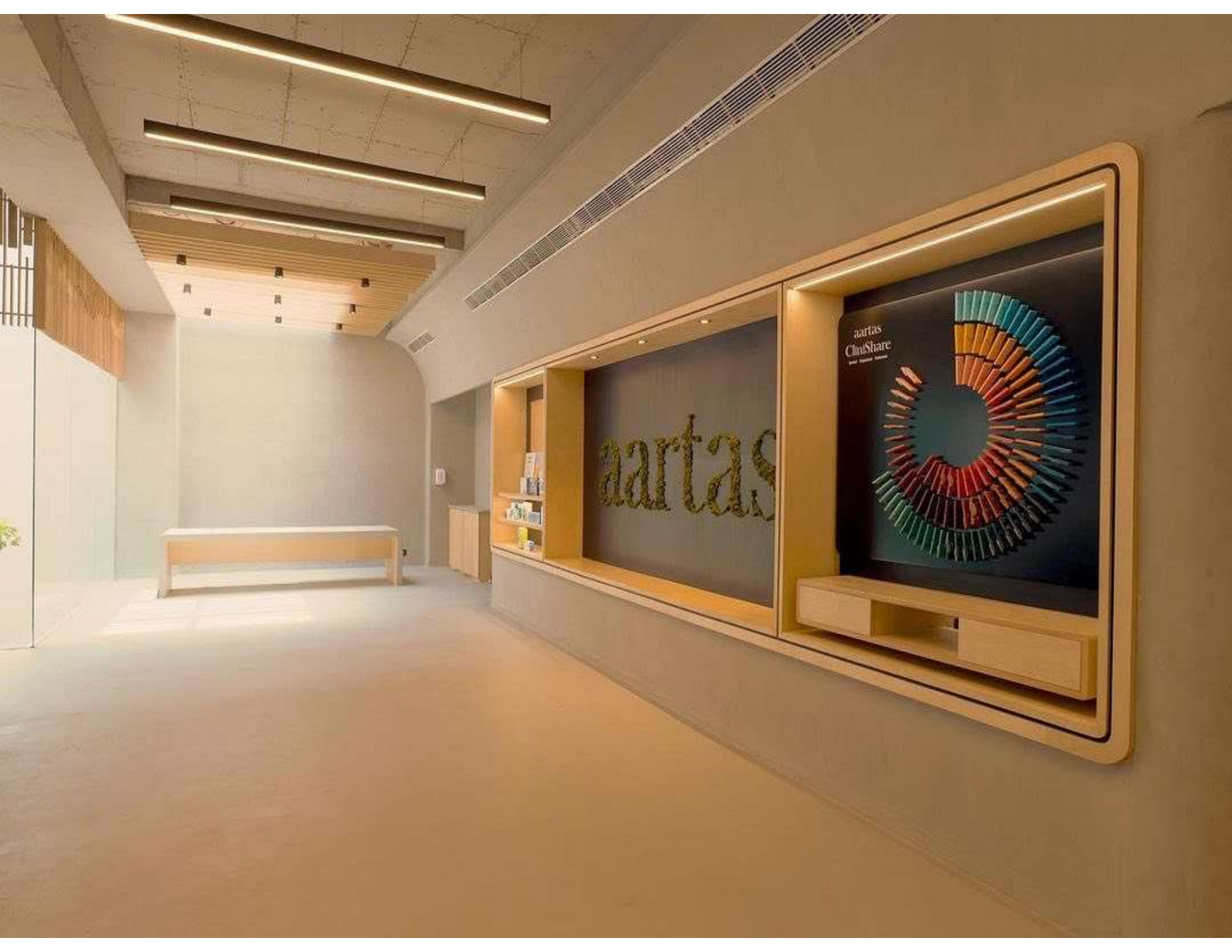


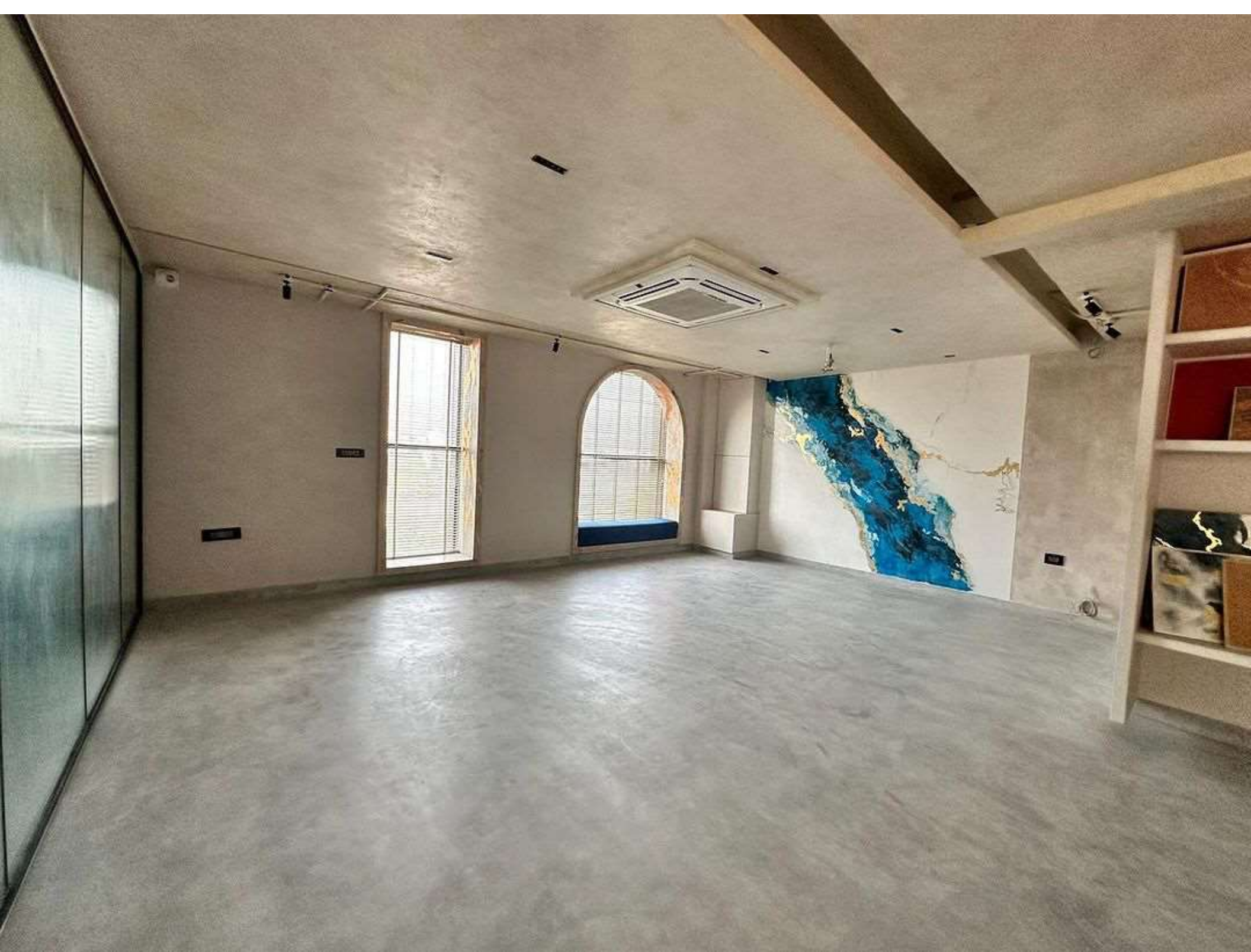


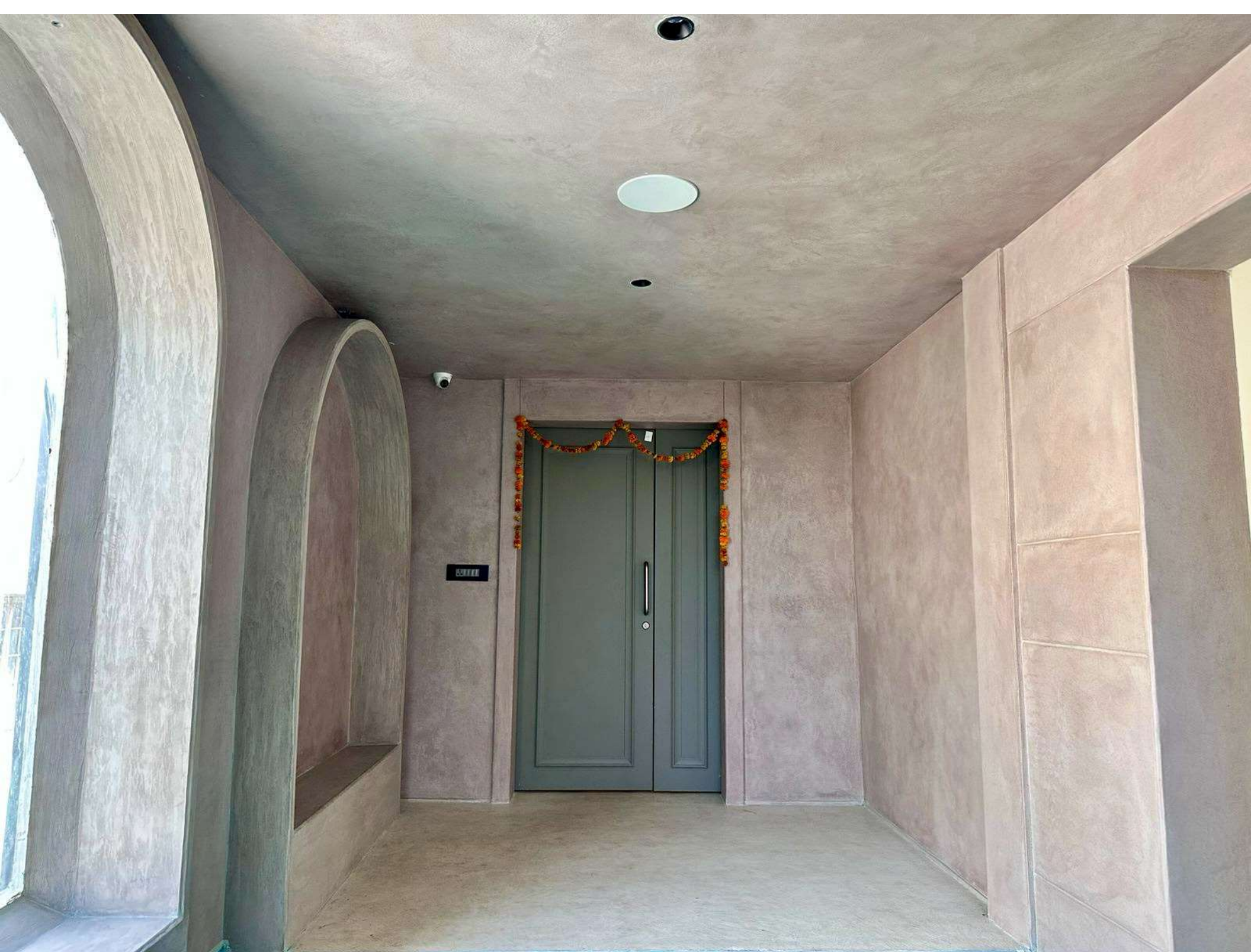










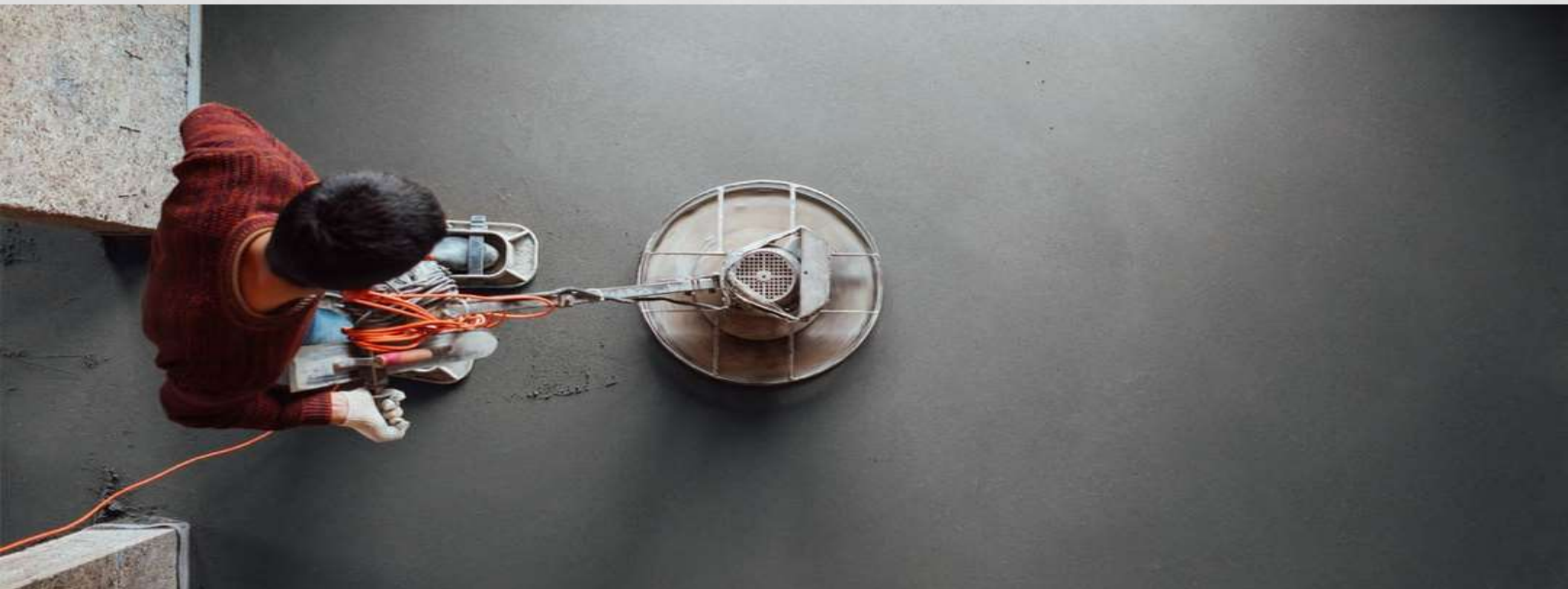








ADVANTAGES: ! Excellent adhesion. ! Excellent resistance to high traffic.
! Retards the penetration of water and de-icing salts.
! Resistant to UV rays and harsh weather conditions.
! Manufactured with low environmental impact because
it is formulated on the basis of water. And polymers



Standard Shades :- DSC Micro-topping BC and TC are supplied in two standard colors: grey and white. To get more colors, the liquid polymer DSC Reactive Colorants can be added during the mixing phase. DSC Reactive Color Stains are water-based stains made from UV stable Oxide based pigments designed for use with DSC Micro-topping. DSC Reactive Concentrates are available in 4 standard colors. (Red ,yellow,Brown,Black) The intensity and hue will vary depending on the amount of product diluted in the polymer and the type (white or grey) of Micro-topping used.



Application Methodology:-

We recommended temperature before any mixing and laying of the material should be between 10°C and 28°C. Do not use in the case of extreme temperatures or in windy conditions. Application of DSC Micro-Topping BC (base coat) The liquid polymer DSC MT is to be kept in a cool place before and during use. It is important to mix the polymer 3 minutes before use. Pour half the contents of the polymer into another clean bucket. Once the liquid polymer has been completely mixed, slowly add a jar of MICRO-TOPPING BC into each of the buckets, mixing for about 2 minutes to remove lumps or dry spots. Once all the materials are properly mixed, apply the mixture in 25 - 30 minutes at temperatures averaging about 20°C. Distribute the first coat on the surface prepared with a Magic or steel trowel. The material should be shaved up to a maximum thickness of 1.5mm. It is important that the thickness should not exceed the size of the aggregates in the cement mixture. Let the surface dry or mature until it is walked on. If the existing surface is very worn, in order to achieve the best performance of the system, a second application of MICRO-TOPPING BC is recommended. Between each coat the surface must be properly sanded. It is recommended to wear shoes during the cover installation and sanding to avoid soiling the surface. For large floors it is advisable to use a single brush with sandpaper or a grit sandpaper disc. When finished, you should vacuum the dust and wipe the surface with a damp cloth.



Application of DSC Micro-Topping TC (Top coat) The polymer liquid is to be kept in a cool place before and during use. It is important to mix the polymer for 3 minutes before use. Put half the polymer contents into another clean bucket. Once the polymer has been completely mixed, slowly add a jar of Micro-topping FC into each of the buckets, mixing for about 2 minutes to remove lumps or dry spots. Once all materials are properly mixed, apply the mixture in 25 - 30 minutes at temperatures averaging about 20°C. Micro-topping FC should be applied only with a steel trowel . Micro-topping FC is a product specially formulated to finish; because of this, it must be applied in very thin layers. The trowel should be used at 45°, as in the application of Venetian Plaster. After that it is necessary to let the surface dry or mature until it is walked on.

When the Micro-topping is dry, the floor will need to be sanded using between 60 to 200 grit sanding screen rather than paper, in order to remove any burrs.

When finished, you should vacuum the dust and wipe the surface with a damp cloth. It is recommended to wear shoes during cover installation and sanding to avoid soiling the surface. A second application of DSC MICRO-TOPPING FC is required if you want to get a smoother surface or if you want to create a cloud effect.

An appropriate sealer from the AQUASEAL WB (Semi glossy /Dead Matt) range can also be applied to give an appropriate finish to the floor / wall Once the application is completed, leave the surface to thoroughly cure/dry for a period of 8 to 12 hours between applications and for 24 hours before allowing foot traffic.

COATING: Once the MICRO-TOPPING is cured, the application of a protective sealer or coating is recommended. The type of sealer should be chosen according to the amount of traffic and the environment. A wide range of AQUASEAL WB sealers are available for this purpose. These products are applied by short pile rollers, sprayers or wax spreaders. MICRO-TOPPING is outstanding for its attractiveness in addition to its strength and the fact that it is quick and easy to apply, maintain and clean. MICRO-TOPPING is not just a decorative product. It can also be successfully used in an industrial environment. It has excellent resistance to UV rays and to climatic stress, plus high resistance to even intense traffic, making it suitable for protecting horizontal or vertical concrete surfaces exposed to light traffic or the elements.

MAINTAINANCE DSC Micro-topping floors are considered decorative flooring, so you will have to pay particular attention to their maintenance: Wash the floor with a neutral ph. Do not under any circumstances use corrosive products or Alkaline products like Phenyl, Or any detergent based cleaners Pot life of mixed material @ 25 Deg cent 30Minutes Application temperature Minimum 10 to 15 Deg Cent Shelf Life: 1 Year if stored in a sealed container Packing: DSC MT Polymer 20 Ltr Packs, DSC (BC) & (TP) available in 40Kg bags with liners • Excessive sun exposure should be avoided during application and for a minimum of 1 hour immediately after application.

- Avoid walking on installed surface for at least 24 hours after installation, depending upon temperature and humidity conditions.
- Never install over non-dimensionally stable materials.
- Overwatering can cause mixture to segregate resulting in uneven surface strengths. Surfaces with reduced strength must be removed mechanically.

5-YEAR WARRANTY

AGAINST CRACKING, PEELING,
AND COLOR FADING

MATERIAL PHYSICAL PROPERTIES:

Property's	Method/Standard	DECPOLMicroTopping
Compressive strength	ASTM C109	~3500 psi at 28days
Flexural Strength	ASTM C348	~860 psi at 28 days
Thickness		2 t0
Abrasion resistance	T&C	4mpa yes
Walkabilit		Depend on Atmosphere /Standard 3Hrs

y

Trends Neutral greys evoke concrete while displaying soft contrasts. **Warm greys** convey the welcoming nature of mineral materials.





White



Vison



Pearl Grey



Dark Grey



Black



Portland



Cement



Ivory



Champagne



Paris Stone



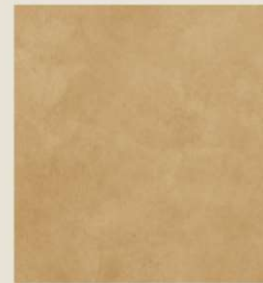
Brown Caramel



Chocolate



Cocoa



Dijon



Iruya



Liberty



Royal Blue



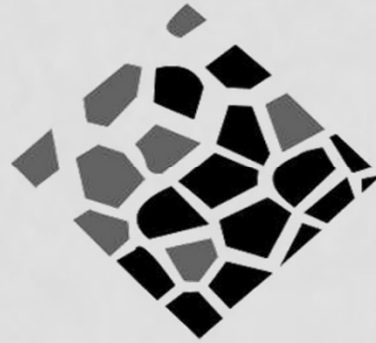
Henna



Orange



Red Ferrari



DECONSURFACE

CSC, DDA Market sector 2 Rohini
Delhi 110085
91 (9911244007)
info@Deconsurface.com
WWW.Deconsurface.com