



MIDLAND TOOLING

Precision. Reliability. Excellence.

COMPANY PROFILE

ISO 9001:2015



Since 1980

647-451-5082
info@midlandtooling.ca
www.midlandtooling.ca



About Us.

Introduction

At Midland Tooling, we bring over 40 years of proven expertise in precision machining. As a trusted name in the industry, our reputation has been built on accuracy, reliability, and on-time delivery. From Cylindrical, Internal, and Surface grinding to manual Lathe and Milling operations, we specialize in delivering high-quality machining solutions tailored to meet the needs of diverse industries. Every project, no matter the scale, is approached with the same commitment to excellence and attention to detail.

As a well-established machine shop, we understand the importance of precision and consistency in every component we manufacture. Our team combines deep technical knowledge with hands-on craftsmanship, ensuring that each part meets the most demanding standards. With decades of experience and a customer-first approach, Midland Tooling continues to be the partner of choice for businesses seeking dependable machining solutions they can trust.



Mission & Vision

MISSION

At Midland Tooling, our mission is to deliver precision machining solutions that consistently exceed customer expectations. We are dedicated to accuracy, reliability, and craftsmanship, ensuring every part we produce reflects the highest standards of quality. By combining decades of expertise with a commitment to continuous improvement, we strive to build lasting partnerships with our clients across a wide range of industries.

VISION

Our vision is to be a leading machine shop recognized for innovation, precision, and trust. We aim to expand our capabilities while staying true to our core values of quality and dependability. By investing in advanced technology, skilled talent, and sustainable practices, Midland Tooling envisions a future where we continue to set new benchmarks in machining excellence and remain the partner of choice for customers worldwide.



Automotive



Aerospace & Defense



Agriculture



Earth Moving Equipments



Fire Fitting



Fluid, Valve & Pump



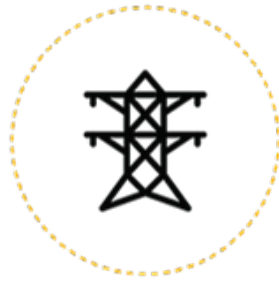
Food Processing



General Engineering



Hydraulics



Industrial Electrical



Medical Device Industry



Mining & Construction

Industries we Serve.

At Midland Tooling, we are proud to serve a wide range of industries where precision and reliability are critical. From automotive and aerospace to defense, energy, manufacturing, and medical, our machining expertise supports the production of high-performance components that keep these industries moving forward. Our ability to meet tight tolerances, deliver on schedule, and adapt to specialized requirements makes us a trusted partner across multiple sectors. No matter the complexity, we provide solutions that ensure lasting performance and quality.

Services we Provide

VMC (Vertical Machining Center)

- Specializes in vertical milling for detailed and intricate components
- Ideal for multi-axis machining, drilling, and contouring operations
- Offers excellent rigidity and stability for superior surface finishes
- Ensures efficient production with high-speed, precision results

CNC Machining

- High-accuracy production with complex geometries
- Suitable for both medium and high-volume manufacturing
- Uses advanced CAD/CAM technology for efficient and precise part production
- Delivers consistent dimensional accuracy and repeatability

Cylindrical Grinding

- Precision external and internal diameter grinding
- Maintains tight tolerances up to ± 0.0002 "
- Ideal for manufacturing shafts, pins, and rollers

Internal Grinding

- Accurate bore and internal surface finishing
- Handles a wide range of diameters and depths
- Ensures consistent concentricity and superior surface finish

Surface Grinding

- Provides high-precision flatness and parallelism
- Achieves fine surface finishes for dies, plates, and molds
- Capable of handling small to medium-sized components

Manual Lathe & Milling

- Custom one-off or small batch machining
- Suitable for repair work, prototypes, and tool modifications
- Skilled machinists ensuring precision and fine craftsmanship

Why Us?

- **Unmatched Experience**

Over 40 years of precision machining expertise — a reputation built on consistency, skill, and trust.

- **Precision Grinding Specialists**

Experts in Cylindrical, Internal, and Surface Grinding, delivering tight tolerances and superior finishes.

- **Full-Service Machining**

From manual Lathe and Milling work to complex grinding projects, we handle all stages of your job with care.

- **Red Seal-Certified Team**

Our certified machinists bring professionalism, accuracy, and craftsmanship to every project.

- **Exceptional Quality Control**

Every part is carefully inspected to ensure it meets the highest standards of accuracy and performance.

- **On-Time, Every Time**

We value your deadlines — reliable turnaround times without compromising quality.

- **Modern Equipment, Proven Techniques**

A blend of well-maintained machinery and decades of hands-on experience ensures precision and reliability.

- **Custom Solutions for Every Need**

We work closely with clients to design and produce parts that meet unique requirements — no shortcuts, no one-size-fits-all.

- **Trusted by Industry Leaders**

Proudly serving clients across automotive, aerospace, tooling, and manufacturing sectors for decades.

- **Family-Owned. Customer-Focused.**

We take pride in our work and build lasting relationships — your satisfaction is at the core of what we do

Our Work



Figure 1.1



Figure 1.2



Figure 1.3



Figure 1.4



Figure 1.6

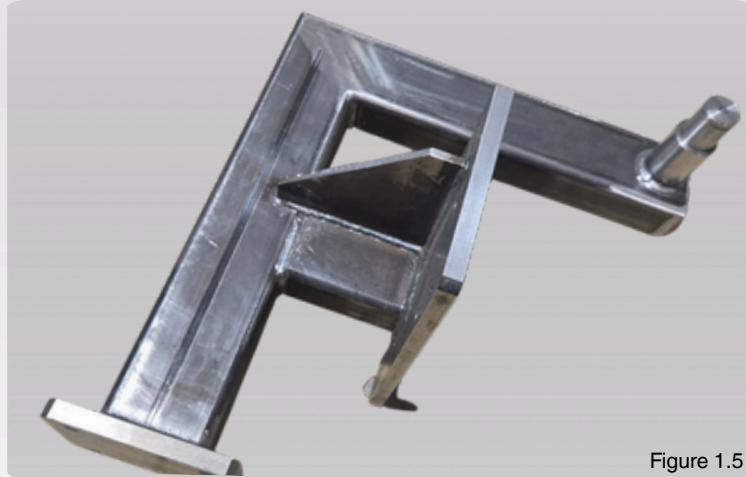


Figure 1.5



Figure 1.7

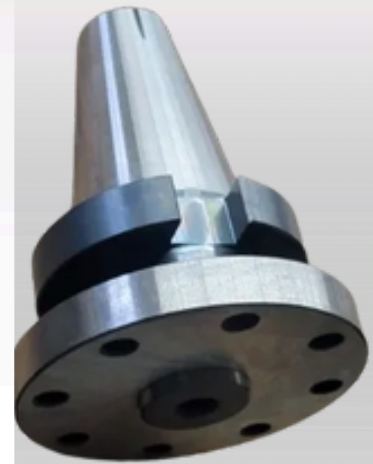
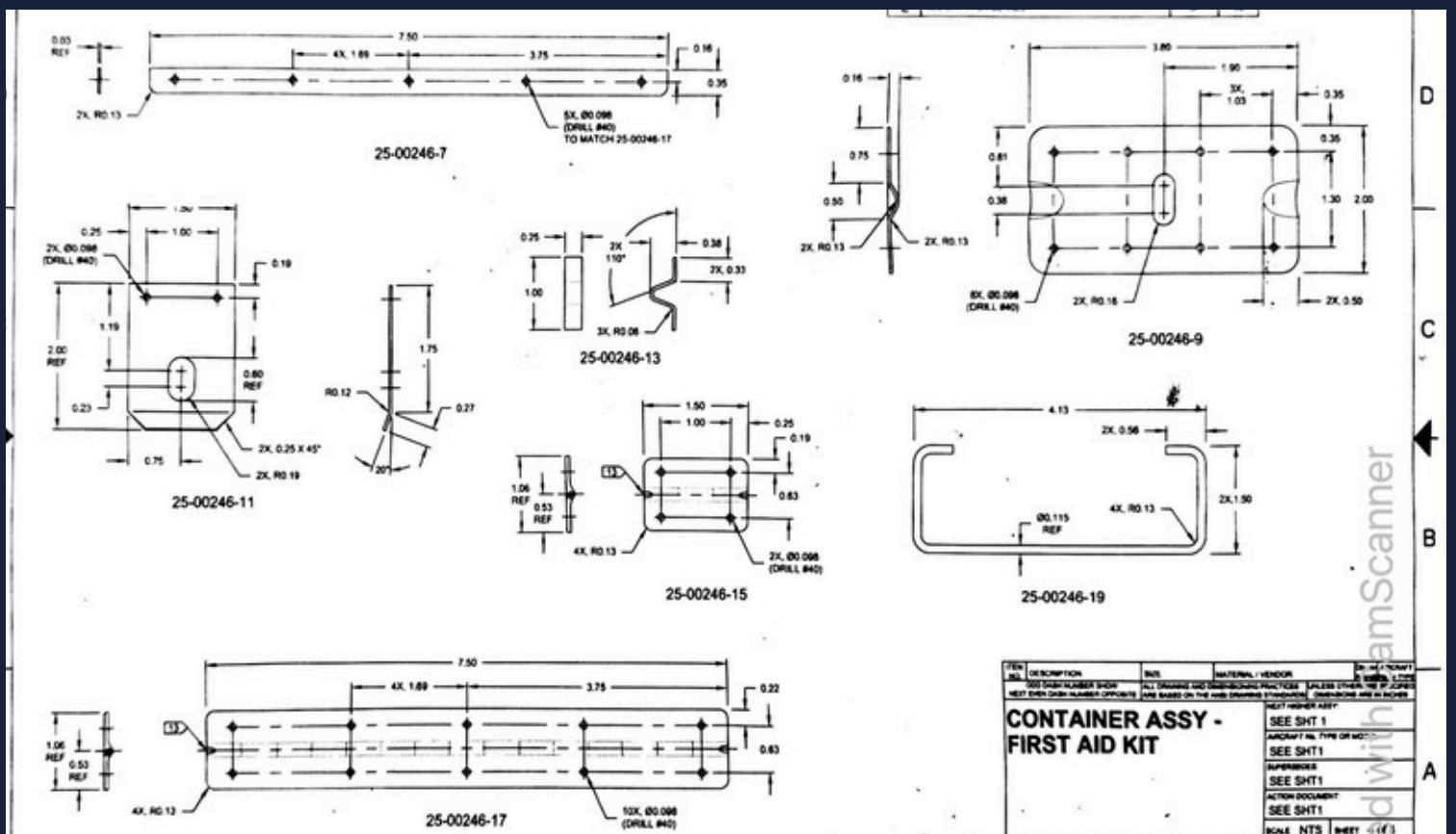
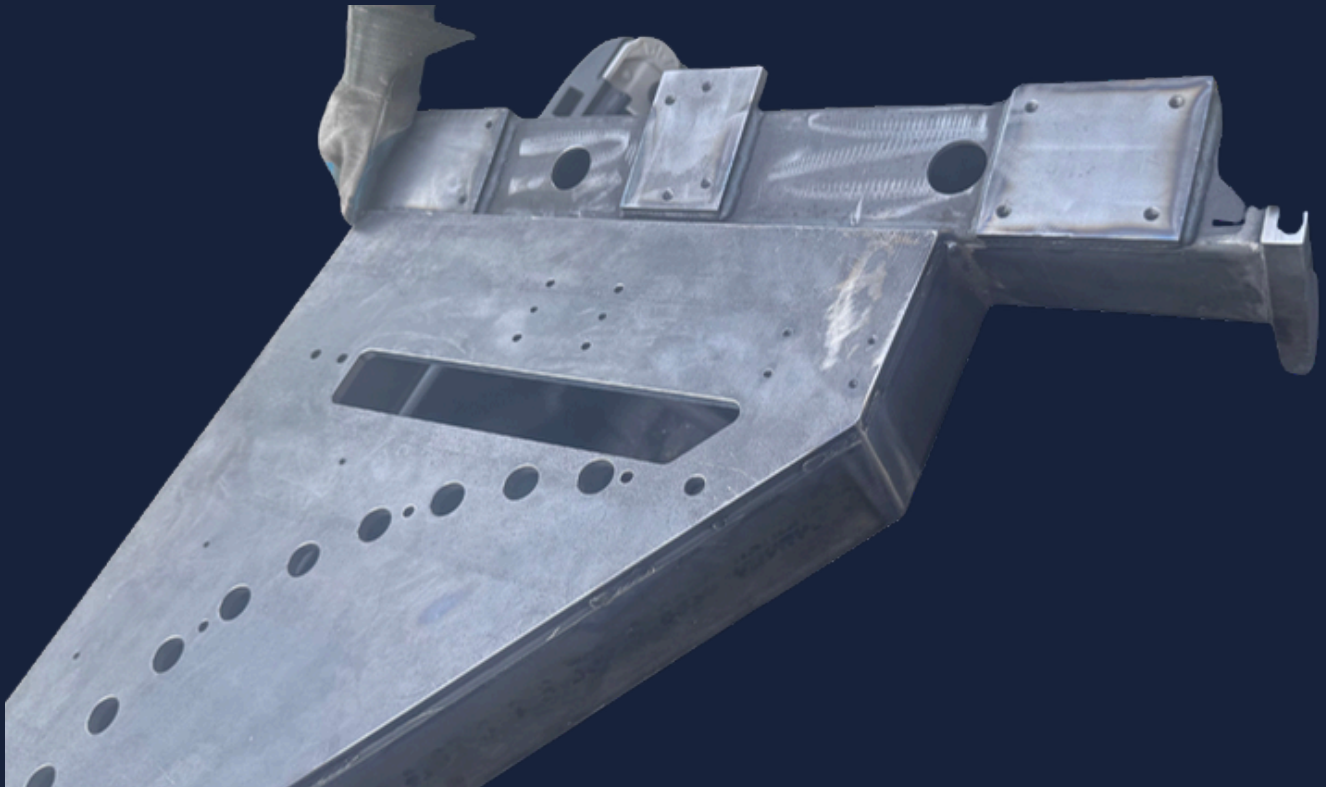


Figure 1.8

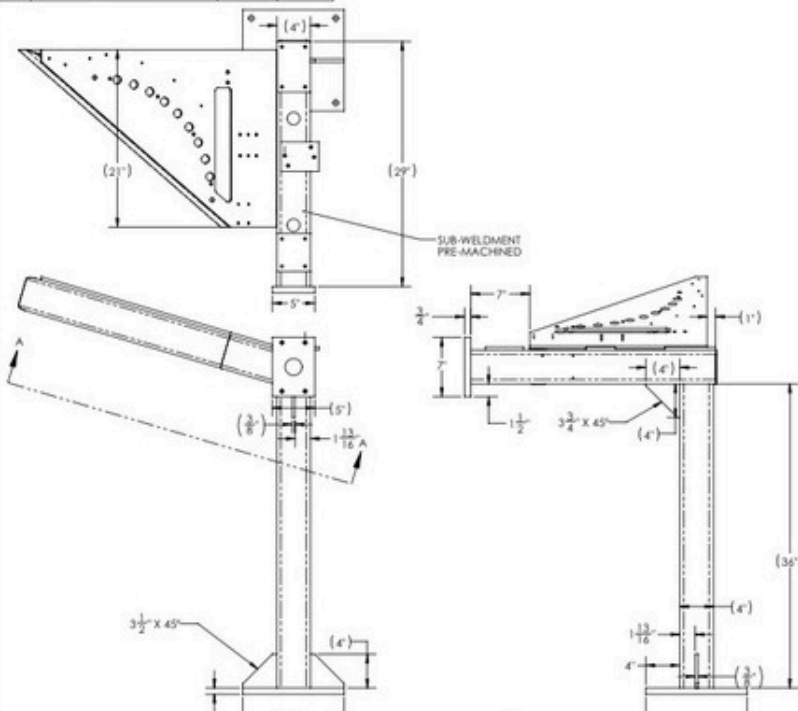
Product Catalog



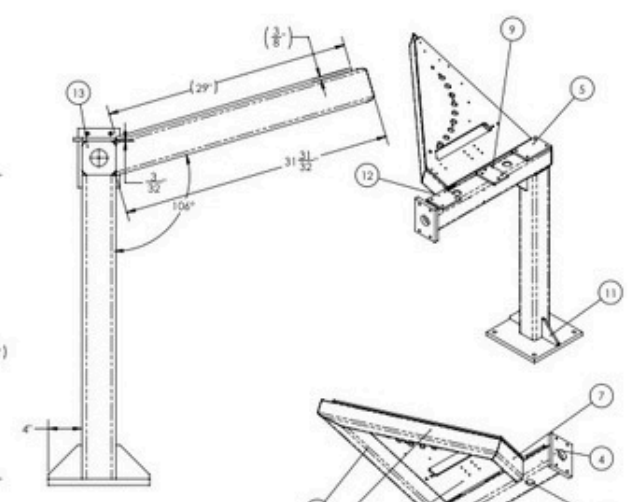
Product Catalog



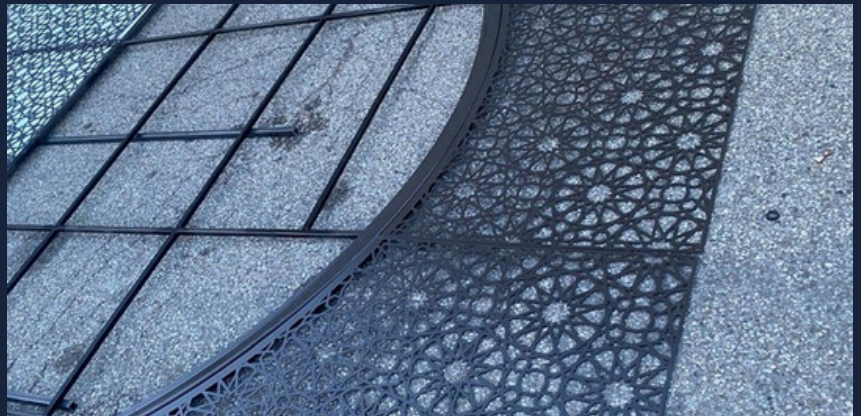
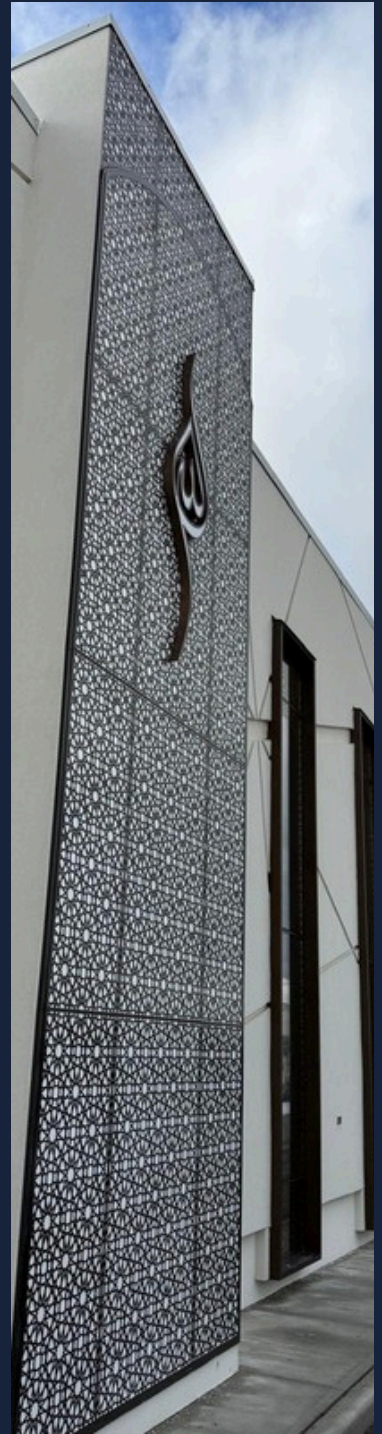
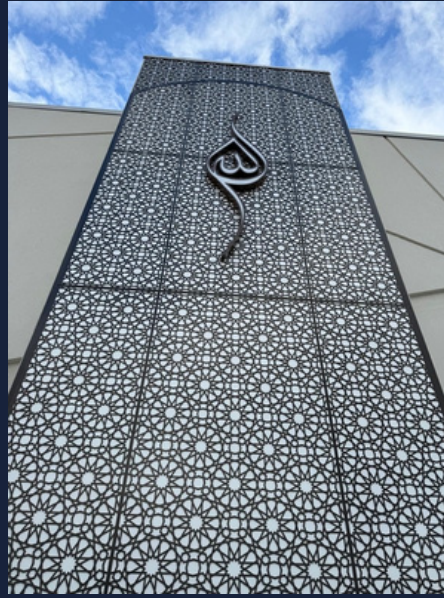
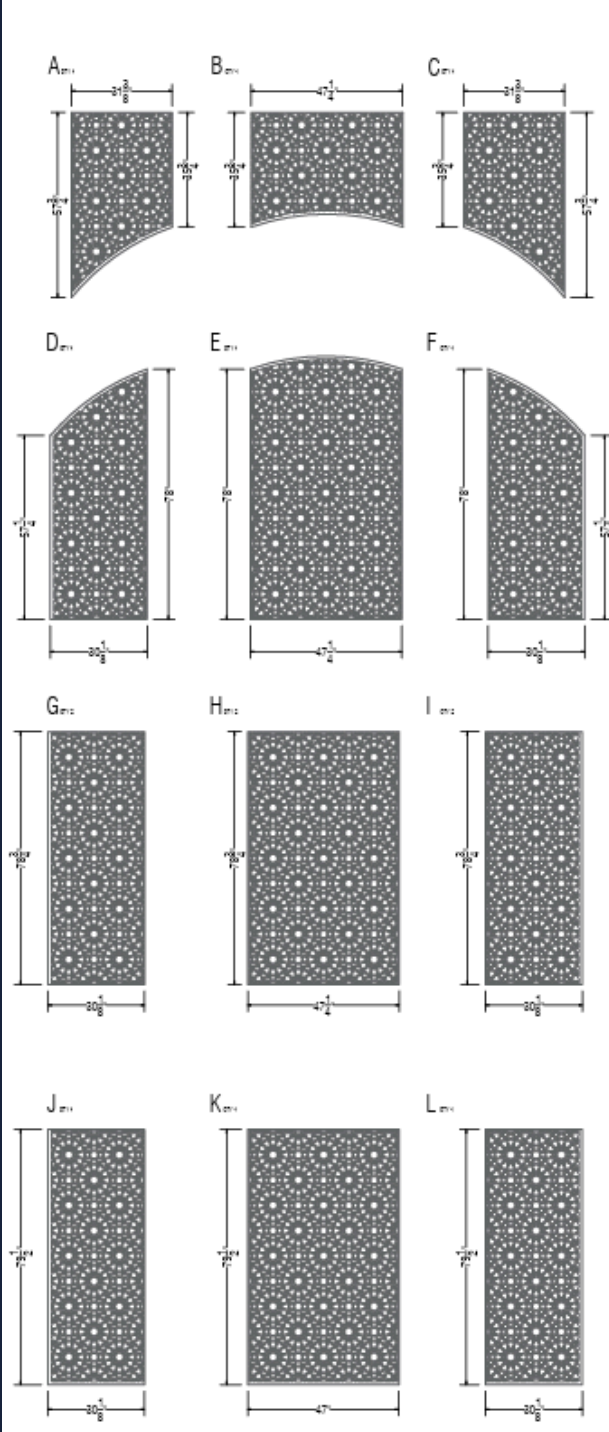
REVISIONS			
REV	DESCRIPTION	DATE	BY/AWL
0	INITIAL RELEASE	2025-11-21	A

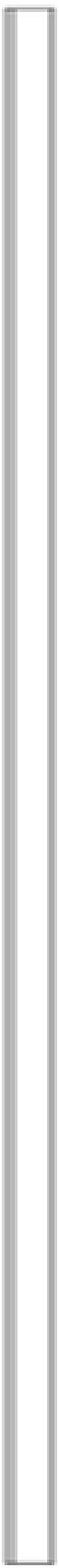
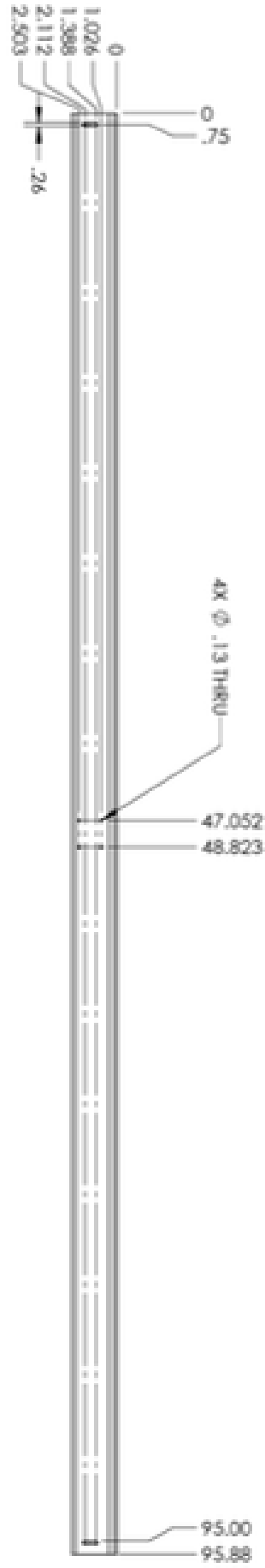
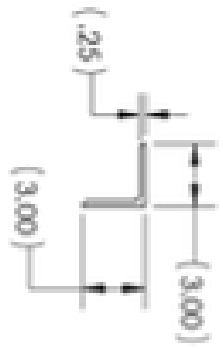



ITEM	TYPE	DESCRIPTION	QTY	MATERIAL	STOCK	DIM/MTL CODE
1	M	TUBE, SQUARE 4 X 4 (3/16 WALL)	1	MHS	4.000X4.000-188	34MHS4.000X4.000-188
2	M	BAR, FLAT 3/4" X 12"	1	MHR	0.750X12.000	12MHR0.750X12.000
3	M	TUBE, SQUARE 4 X 4 (3/16 WALL)	1	MHS	4.000X4.000-188	29MHS4.000X4.000-188
4	M	BAR, FLAT 3/4" X 5"	1	MCR	0.750X5.000	7MCR0.750X5.000
5	M	BAR, FLAT 3/8" X 4"	1	MHR	0.375X4.000	4MHR0.375X4.000
6	M	TUBE, RECTANGULAR 4 X 2 (3/16 WALL)	1	MHS	4.000X2.000-188	31.98MHS4.000X2.000-188
7	M	TUBE, RECTANGULAR 4 X 2 (3/16 WALL)	1	MHS	4.000X2.000-188	6.95MHS4.000X2.000-188
8	M	PLATE 3/8" THK X 21" X 29"	1	MHR		410-07-06.002.1c
9	M	BAR, FLAT 3/8" X 3 1/2"	1	MHR	0.375X3.500	4.5MHR0.375X3.500
10	M	TUBE, RECTANGULAR 4 X 2 (3/16 WALL)	1	MHS	4.000X2.000-188	32.67MHS4.000X2.000-188
11	M	BAR, FLAT 3/8" X 4"	2	MHR	0.375X4.000	4MHR0.375X4.000
12	M	BAR, FLAT 3/8" X 4"	1	MHR	0.375X4.000	4.5MHR0.375X4.000
13	M	BAR, FLAT 1/8" X 4"	1	MHR	0.125X4.000	4MHR0.125X4.000
14	M	BAR, FLAT 3/8" X 4"	1	MHR	0.380X4.000	4MHR0.380X4.000



Metal Framing







MIL MAM1		HARDNESS NONE		FINISH PAINT: FIXED GUARDS		STOCK 3.000X3.000-250		DIA1 96.0		ADD/PROCESS		TYPE D	
 MIDLAND TOOLING <i>Precision. Reliability. Excellence.</i>		RELEASED TO PRODUCTION		PART NO.		26077-01-80.001		MIL CODE MAM13.000X3.000-250		MAKE			
				DRAWN: KS 8/06/24		DESCRIPTION: CAMERA MOUNT		PART #				SIZE B	
		BREAK / DEBUR SHARP EDGES U.O.S TOLERANCES: .00 .00 FRACTIONAL: 1/32 ANGULAR: ±1°		JOB NO.		SCALE 1:8		SHEET 1 OF 1		WEIGHT (lb) 38.939		REV 0	

**“PRECISION IS NOT JUST OUR
PROCESS –
it’s our promise.”**

MIDLAND TOOLING

 905-678-0432

 647-451-5082

 info@midlandtooling.ca

