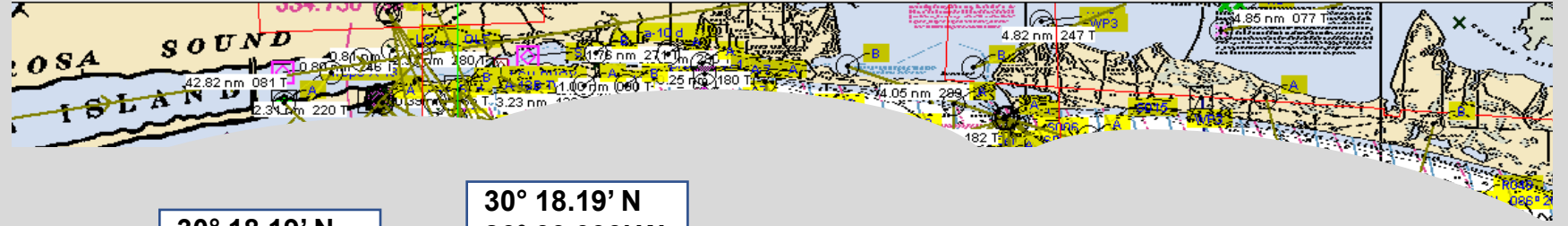


# Mariner's Handout



30° 18.19' N  
86° 51.007' W

30° 18.19' N  
86° 39.993' W

## **Surface Danger Zone (SDZ)** **(Boaters stay 1 NM outside of SDZ Perimeter)**

30° 11.453' N  
86° 58.794' W

30° 11.453' N  
86° 32.206' W

### **US Air Force Mission**

**Date: 29-30 Jul 2024;**

**Approx: 0700-1300 hours 29th & 1400-1730 30th**

**POC: Eglin JTTOCC 850-882-5800;**

**Hail: Marine band VHF Channel 16 & Upper Side Band 2182KHz**

**Call Sign Wolfcall**

**Reference JON AGZE0120**

**Contact Range Clearance vessels**

**MB VHF Ch 82a**

**Date of Latest update: 28 July 24**

30° 1.927' N  
86° 58.794' W

30° 1.927' N  
86° 32.206' W

29° 55.19' N  
86° 51.007' W

29° 55.19' N  
86° 39.993' W