



WEIST FARMS

W02

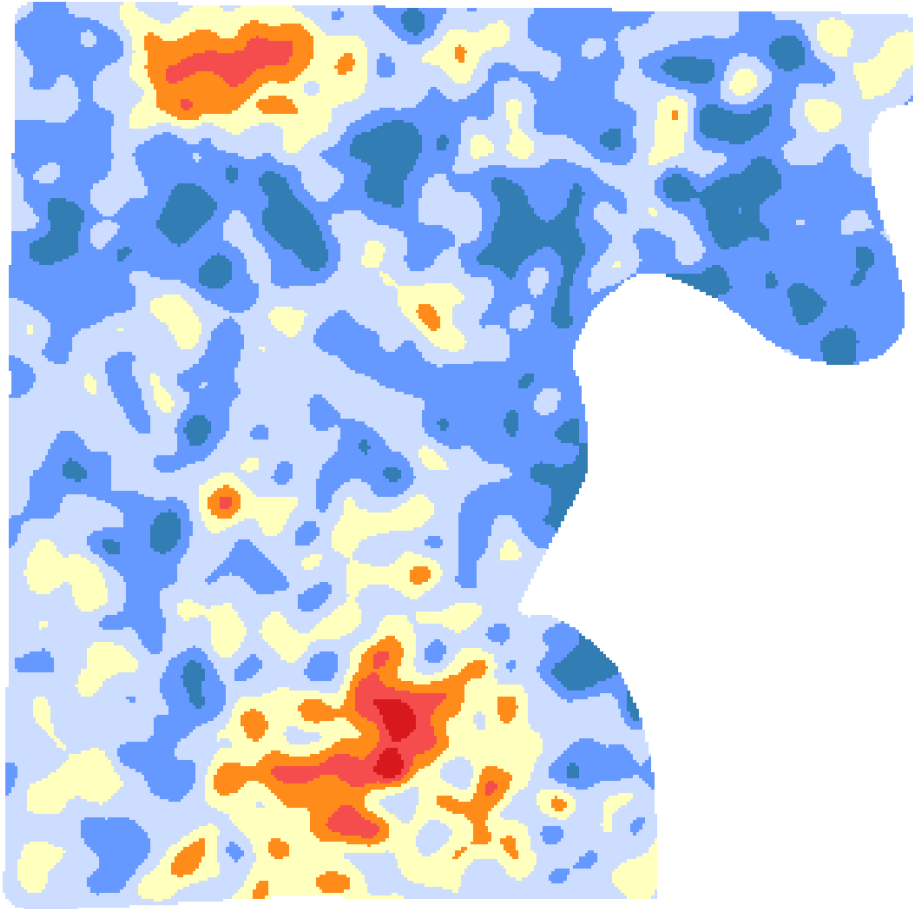
Nutrient and Texture Maps

SoilOptix Inc.
597112 Hwy59
Tavistock ON
N0B 2R0
www.SoilOptix.com
519-902-7645

This document is designed to provide you a “snapshot” of your field at a glance. Legend descriptions are not recommendations.

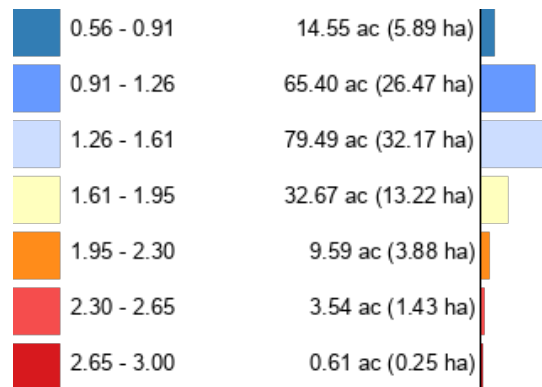
W02

B



Client: Weist Farms
Farm: Weist
Field: W02
Sample Year: 2023

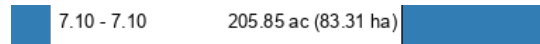
Min: 0.56
Max: 3.00
Acres: 205.86
Hectares: 83.31



W02 BpH



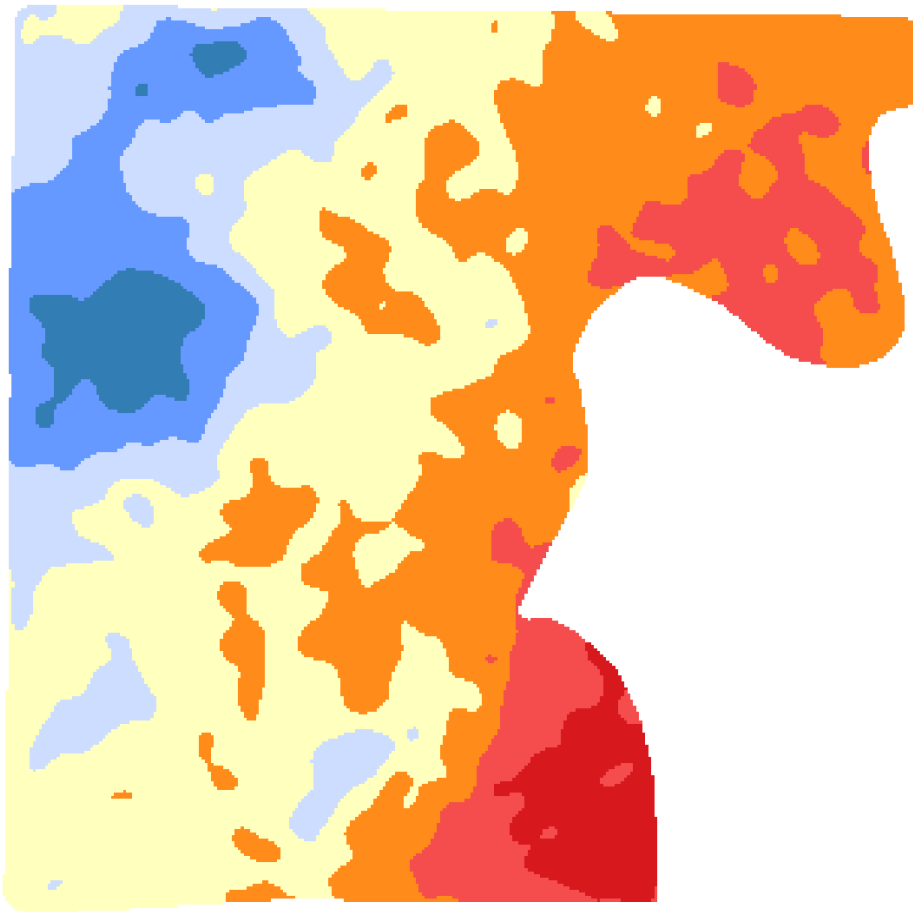
Client: Weist Farms
Farm: Weist
Field: W02
Sample Year: 2023



Min: 7.10
Max: 7.10
Acres: 205.86
Hectares: 83.31







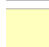







W02

Ca



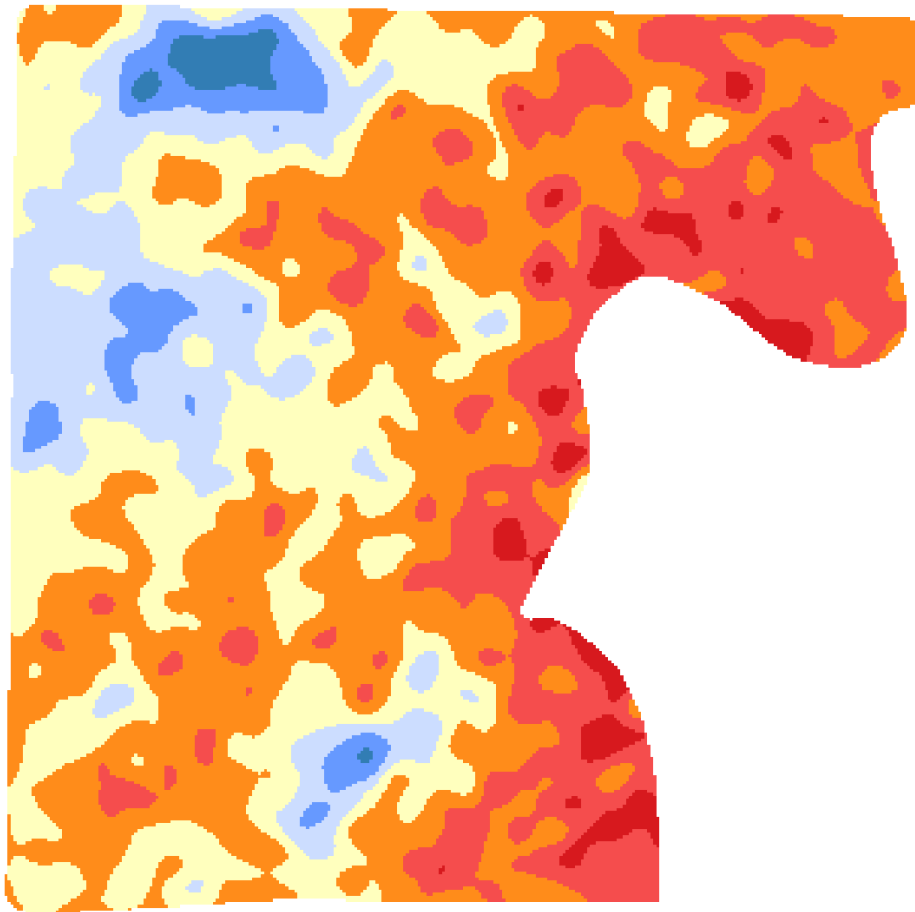
Client: Weist Farms
Farm: Weist
Field: W02
Sample Year: 2023

Min: 2691.32
Max: 3708.89
Acres: 205.86
Hectares: 83.31

	2691.32 - 2836.69	6.32 ac (2.56 ha)	
	2836.69 - 2982.05	18.42 ac (7.46 ha)	
	2982.05 - 3127.42	25.44 ac (10.30 ha)	
	3127.42 - 3272.79	69.67 ac (28.20 ha)	
	3272.79 - 3418.16	58.51 ac (23.68 ha)	
	3418.16 - 3563.52	19.94 ac (8.07 ha)	
	3563.52 - 3708.89	7.54 ac (3.05 ha)	

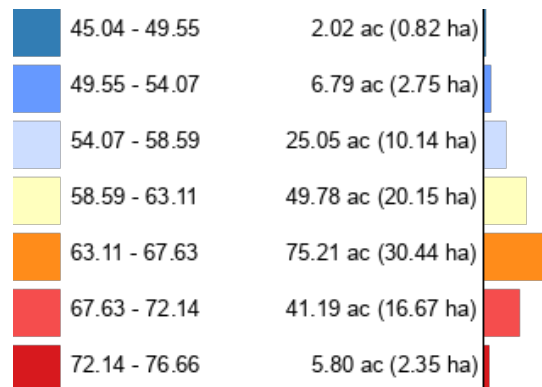
W02

Ca_bse



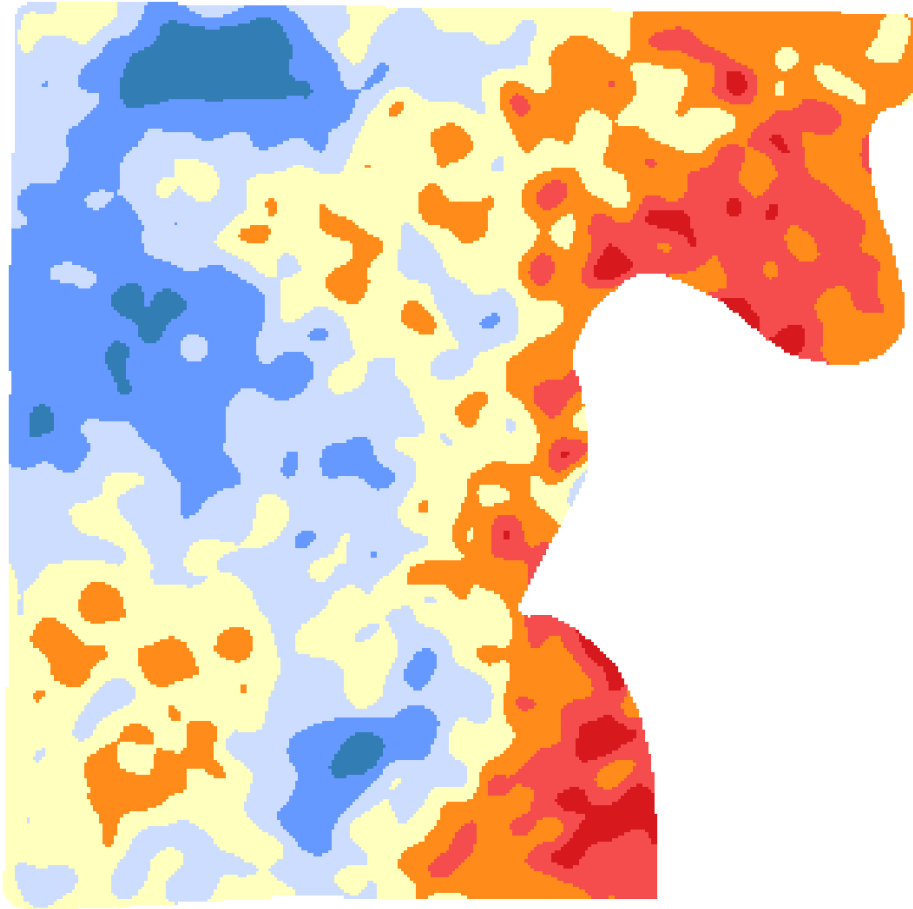
Client: Weist Farms
Farm: Weist
Field: W02
Sample Year: 2023

Min: 45.04
Max: 76.66
Acres: 205.86
Hectares: 83.31



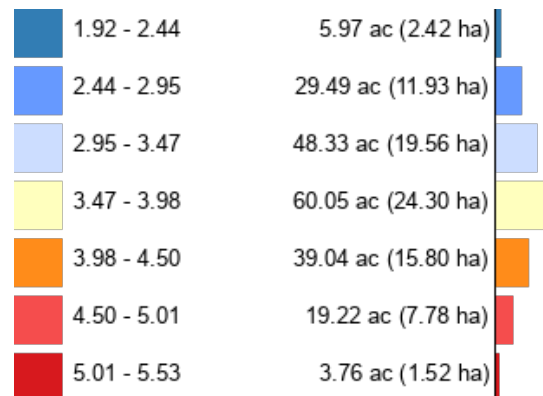
W02

Ca_Mg

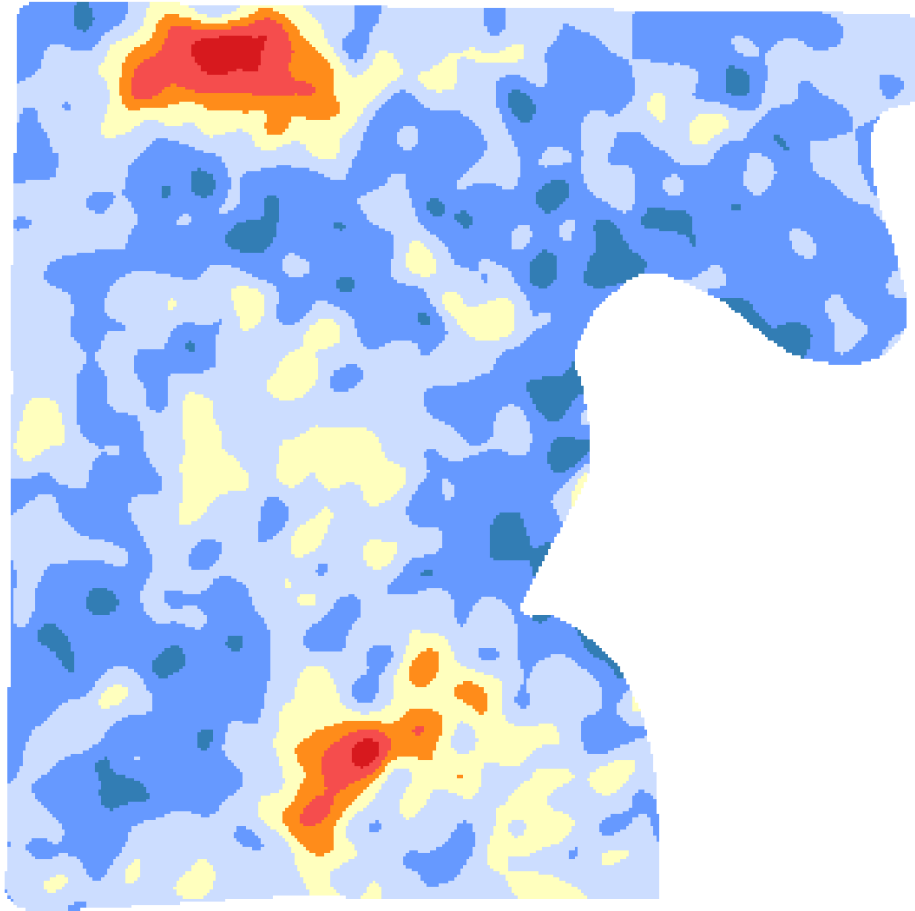


Client: Weist Farms
Farm: Weist
Field: W02
Sample Year: 2023

Min: 1.92
Max: 5.53
Acres: 205.86
Hectares: 83.31

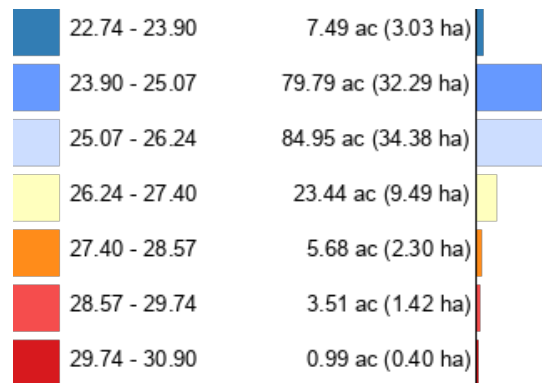


W02 CEC

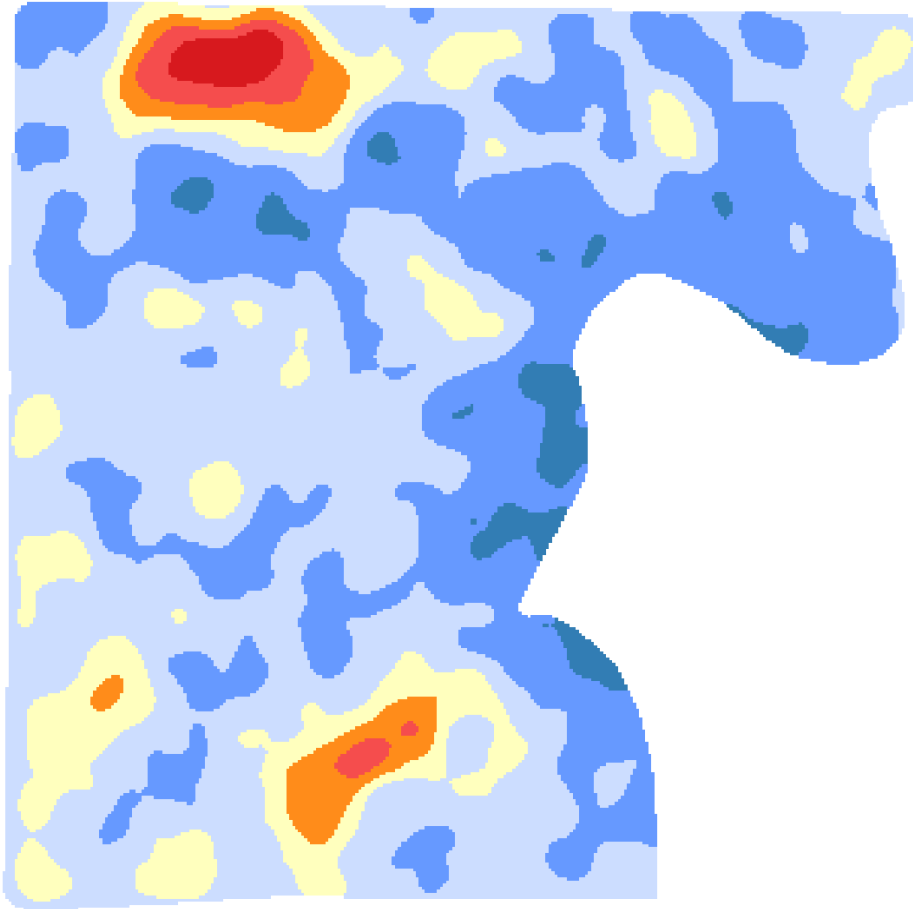


Client: Weist Farms
Farm: Weist
Field: W02
Sample Year: 2023

Min: 22.74
Max: 30.90
Acres: 205.86
Hectares: 83.31



W02 Countrate



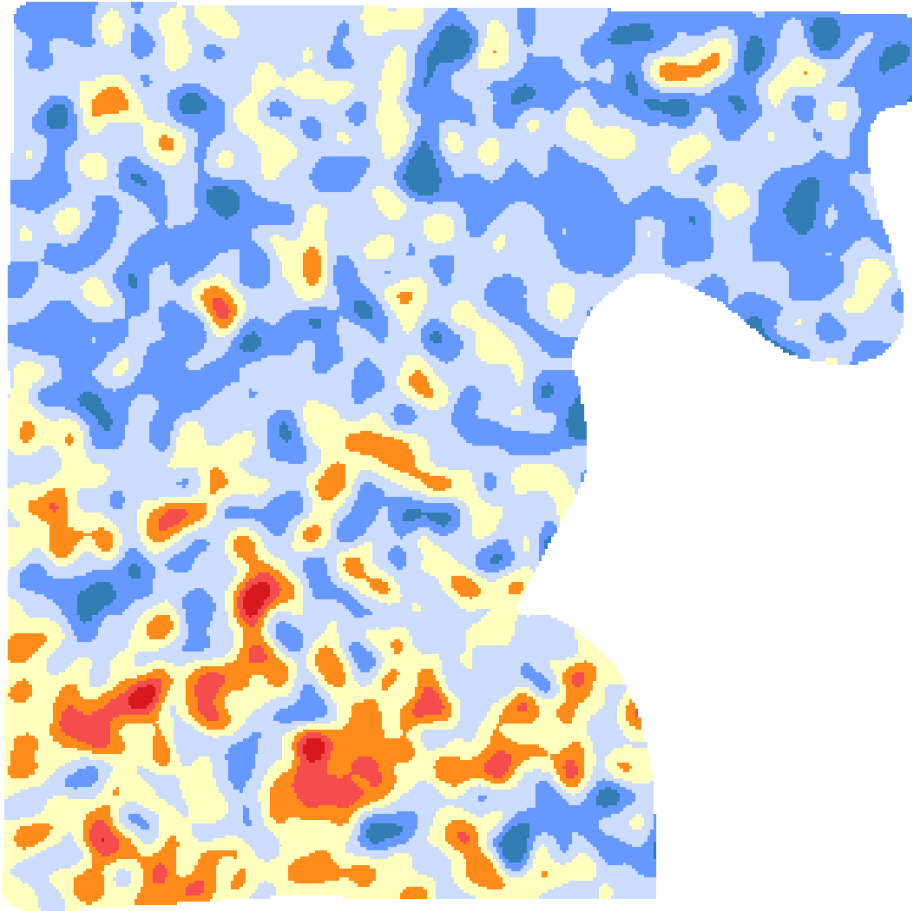
Client: Weist Farms
Farm: Weist
Field: W02
Sample Year: 2023

Min: 2001.18
Max: 2788.87
Acres: 205.86
Hectares: 83.31

2001.18 - 2113.71	5.52 ac (2.23 ha)	
2113.71 - 2226.23	68.02 ac (27.53 ha)	
2226.23 - 2338.76	96.83 ac (39.19 ha)	
2338.76 - 2451.29	24.57 ac (9.94 ha)	
2451.29 - 2563.81	6.29 ac (2.54 ha)	
2563.81 - 2676.34	2.99 ac (1.21 ha)	
2676.34 - 2788.87	1.63 ac (0.66 ha)	

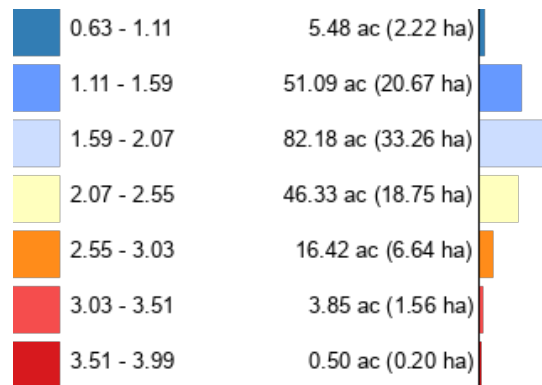
W02

Cu

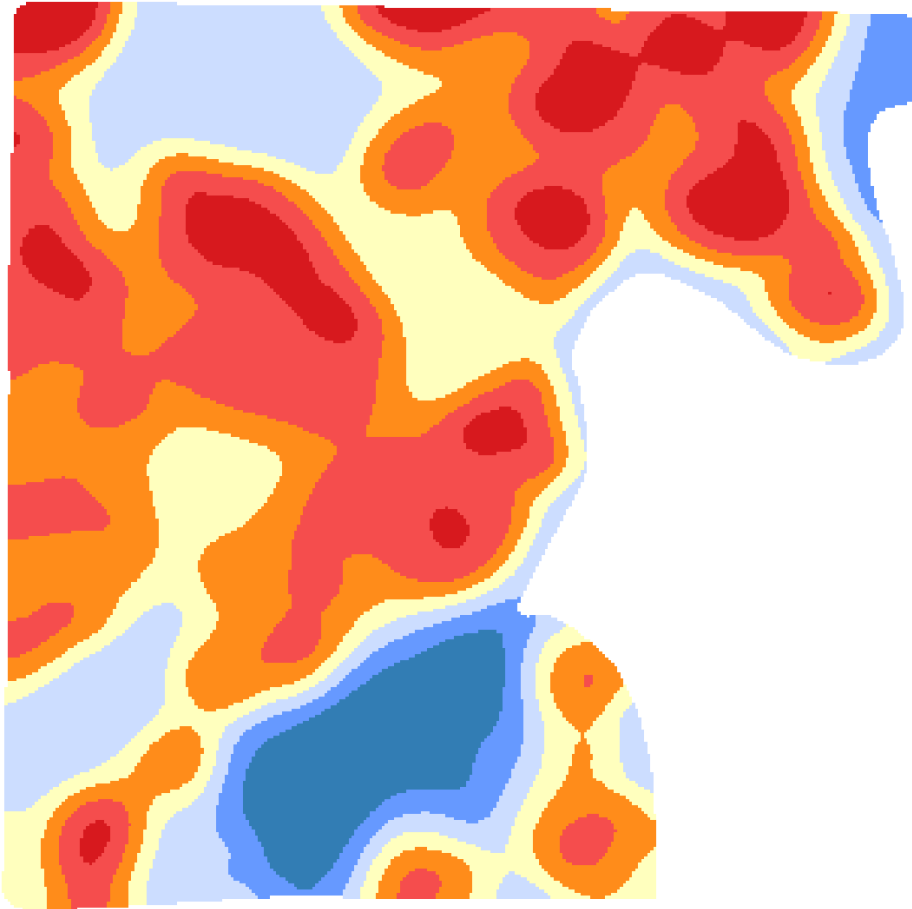


Client: Weist Farms
Farm: Weist
Field: W02
Sample Year: 2023

Min: 0.63
Max: 3.99
Acres: 205.86
Hectares: 83.31



W02 Elevation



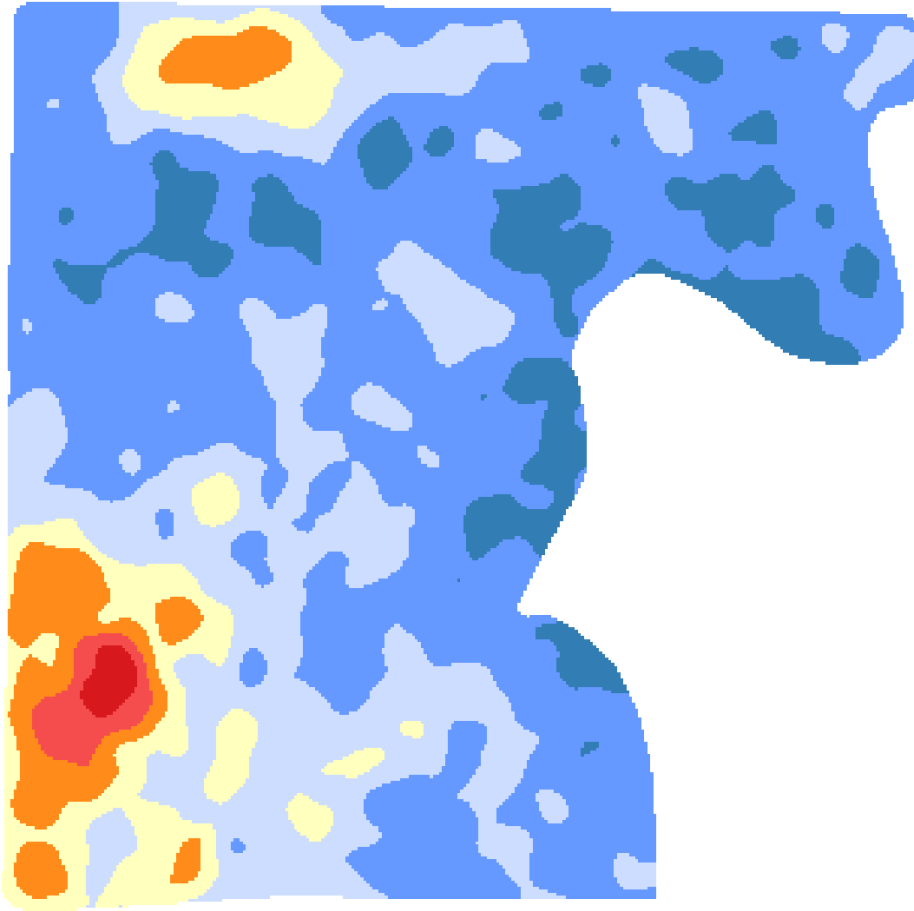
Client: Weist Farms
Farm: Weist
Field: W02
Sample Year: 2023

Min: 3752.64
Max: 3786.90
Acres: 205.86
Hectares: 83.31

3752.64 - 3757.54	11.66 ac (4.72 ha)
3757.54 - 3762.43	9.28 ac (3.76 ha)
3762.43 - 3767.33	31.45 ac (12.73 ha)
3767.33 - 3772.22	36.34 ac (14.71 ha)
3772.22 - 3777.12	50.02 ac (20.24 ha)
3777.12 - 3782.01	50.99 ac (20.63 ha)
3782.01 - 3786.90	16.12 ac (6.52 ha)

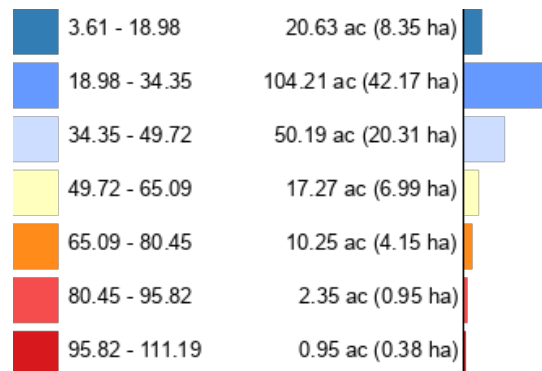
W02

Fe



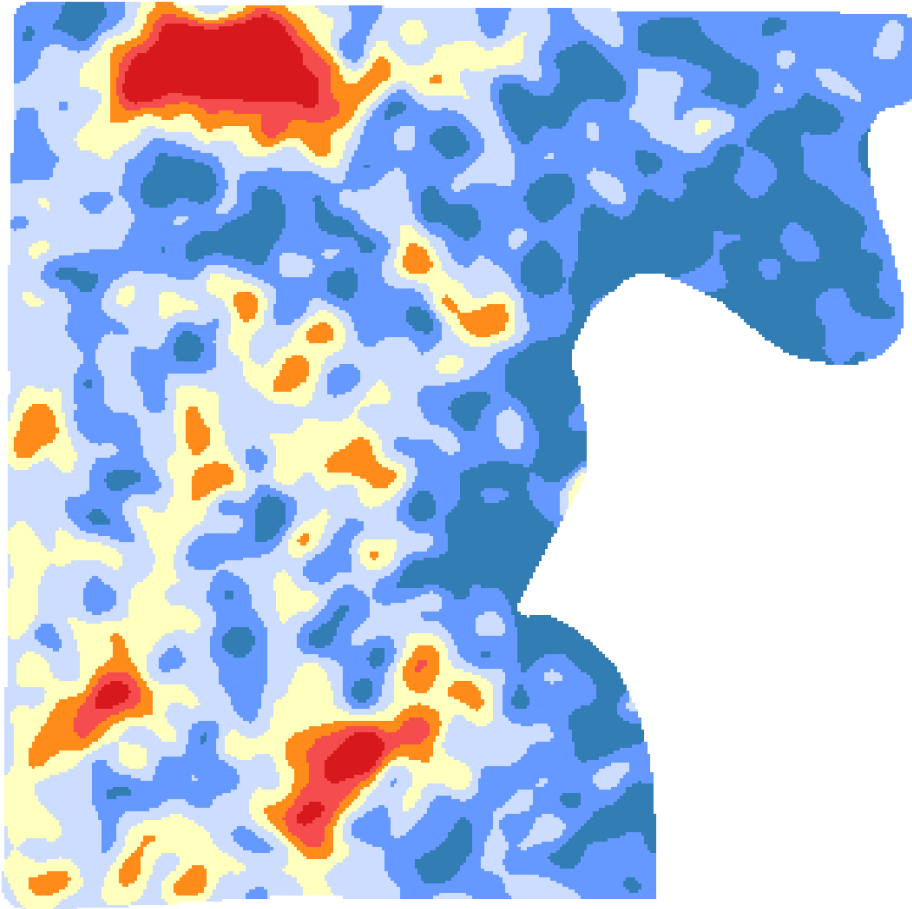
Client: Weist Farms
Farm: Weist
Field: W02
Sample Year: 2023

Min: 3.61
Max: 111.19
Acres: 205.86
Hectares: 83.31

















W02

K

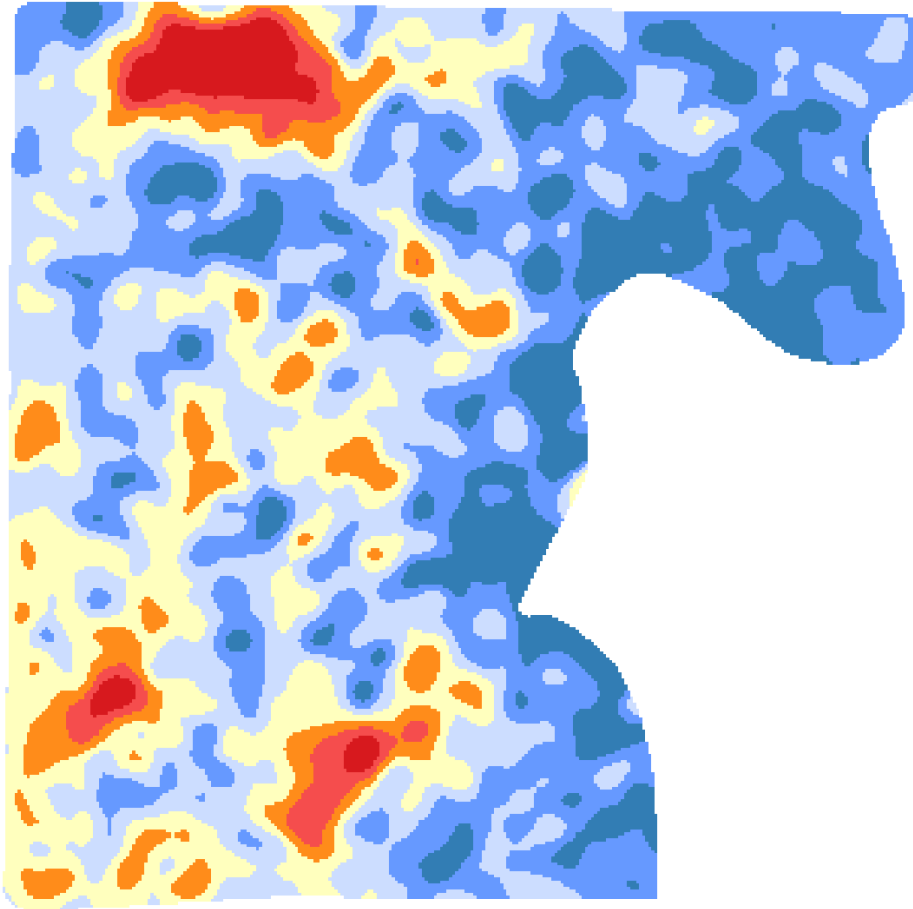


Client: Weist Farms
Farm: Weist
Field: W02
Sample Year: 2023

Min: 169.94
Max: 1105.80
Acres: 205.86
Hectares: 83.31

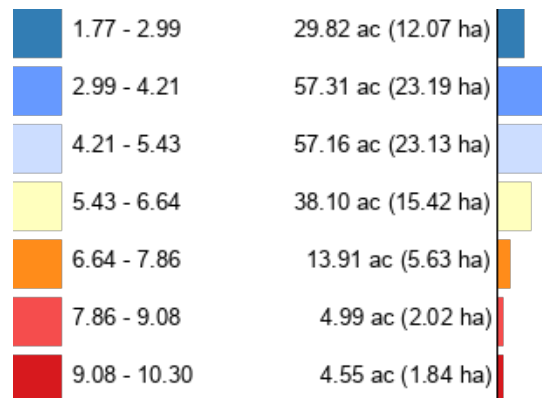
	169.94 - 303.63	35.94 ac (14.55 ha)	
	303.63 - 437.33	62.96 ac (25.48 ha)	
	437.33 - 571.02	57.06 ac (23.09 ha)	
	571.02 - 704.72	29.99 ac (12.14 ha)	
	704.72 - 838.41	10.45 ac (4.23 ha)	
	838.41 - 972.11	4.20 ac (1.70 ha)	
	972.11 - 1105.80	5.24 ac (2.12 ha)	

W02
K_bse



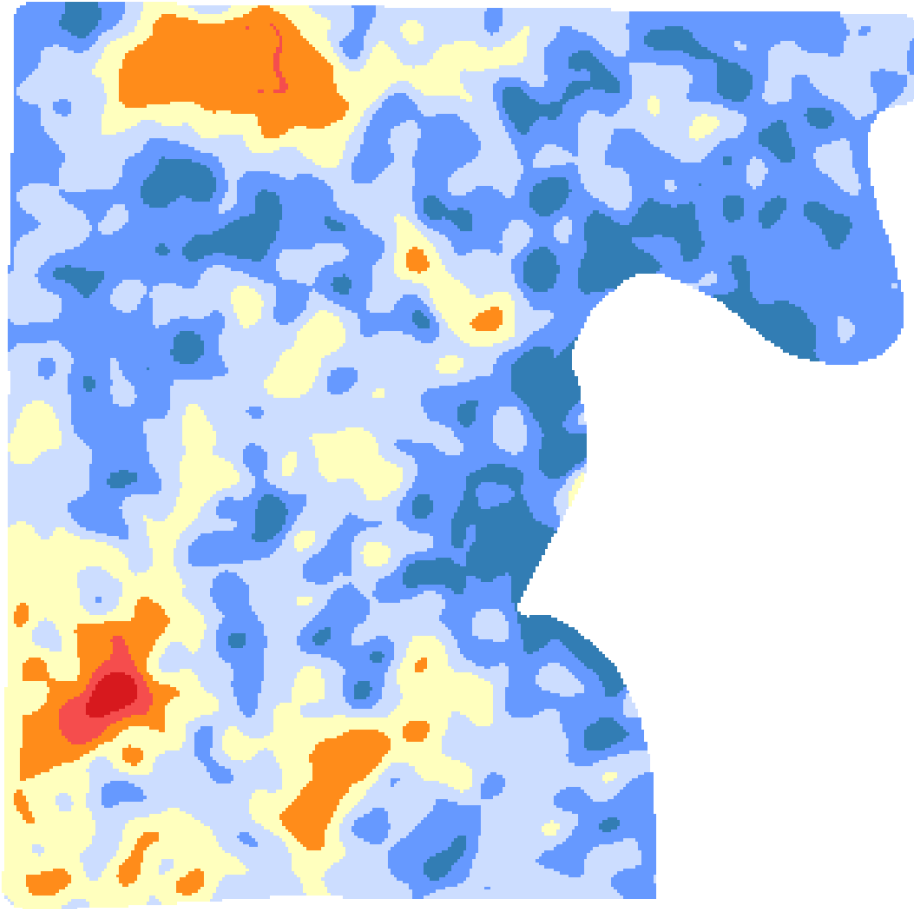
Client: Weist Farms
Farm: Weist
Field: W02
Sample Year: 2023

Min: 1.77
Max: 10.30
Acres: 205.86
Hectares: 83.31



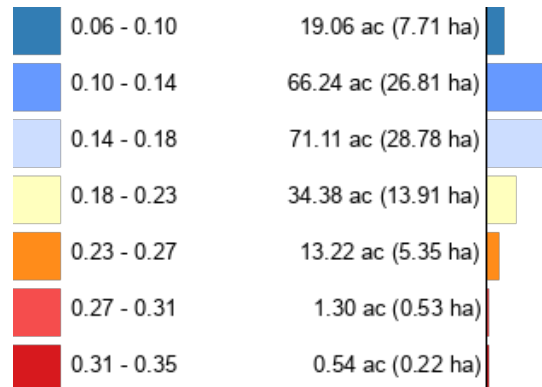
W02

K_Mg



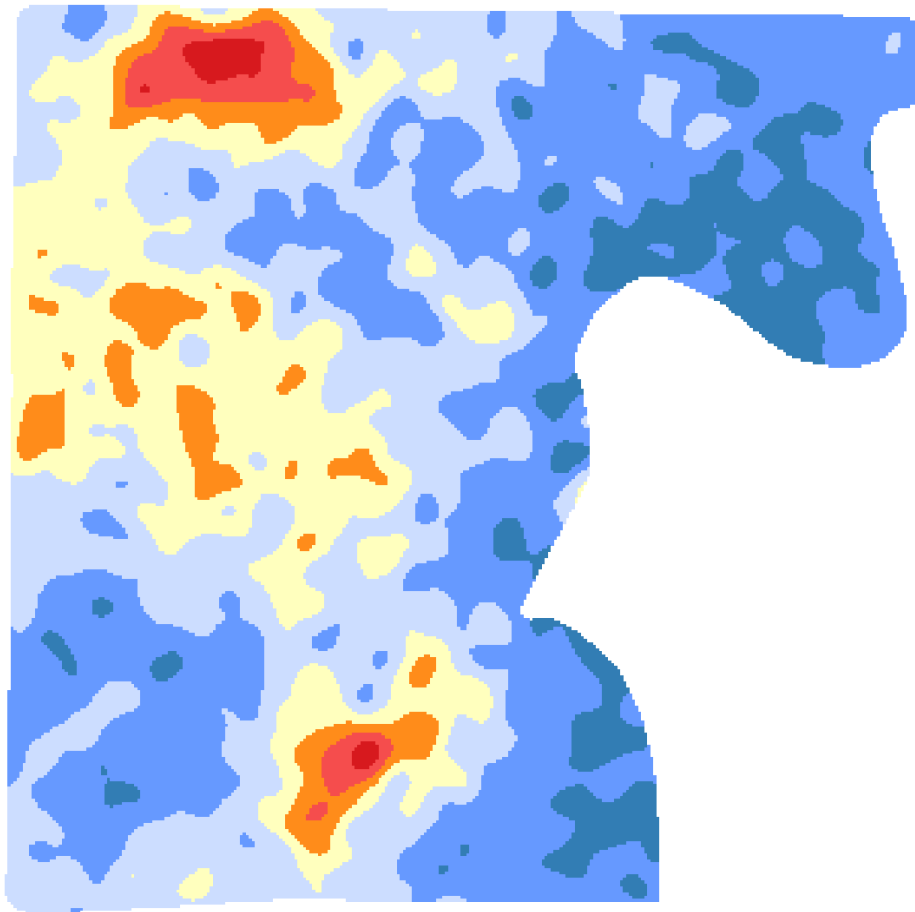
Client: Weist Farms
Farm: Weist
Field: W02
Sample Year: 2023

Min: 0.06
Max: 0.35
Acres: 205.86
Hectares: 83.31



W02

Mg

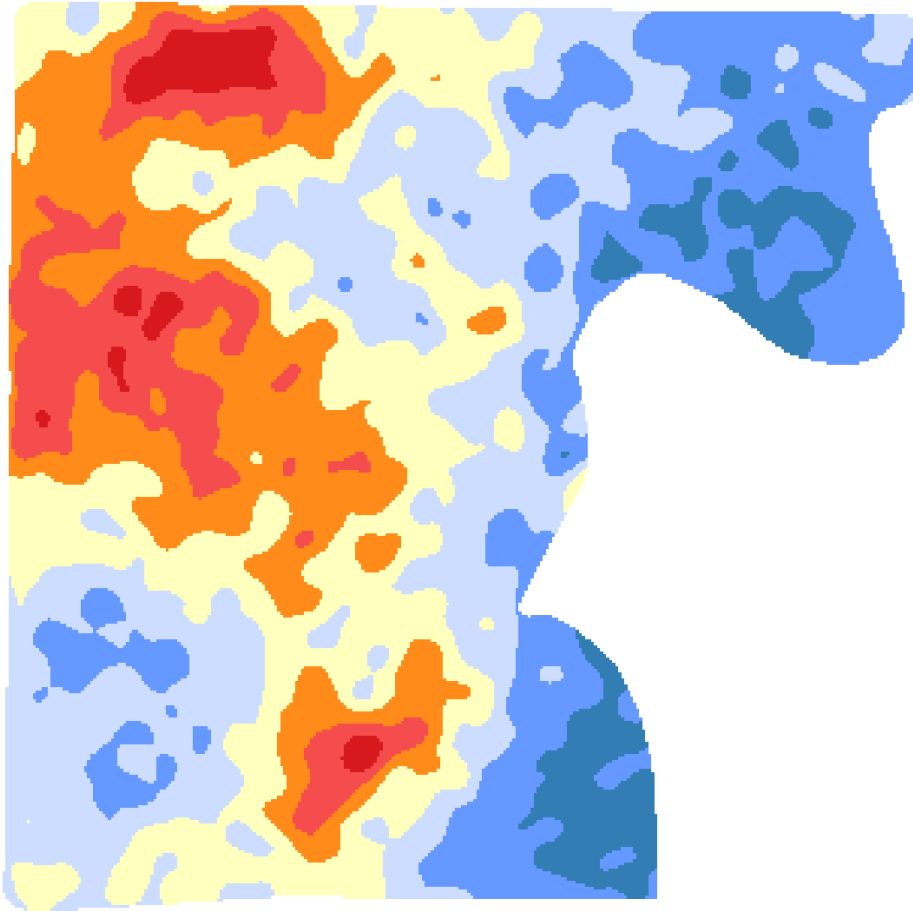


Client: Weist Farms
Farm: Weist
Field: W02
Sample Year: 2023

Min: 636.98
Max: 1449.00
Acres: 205.86
Hectares: 83.31

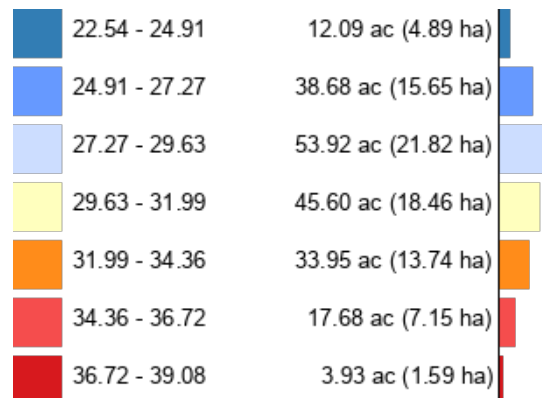
636.98 - 752.99	18.56 ac (7.51 ha)
752.99 - 868.99	70.25 ac (28.43 ha)
868.99 - 984.99	61.09 ac (24.72 ha)
984.99 - 1100.99	39.80 ac (16.11 ha)
1100.99 - 1216.99	11.16 ac (4.52 ha)
1216.99 - 1333.00	3.82 ac (1.55 ha)
1333.00 - 1449.00	1.16 ac (0.47 ha)

W02
Mg_bse



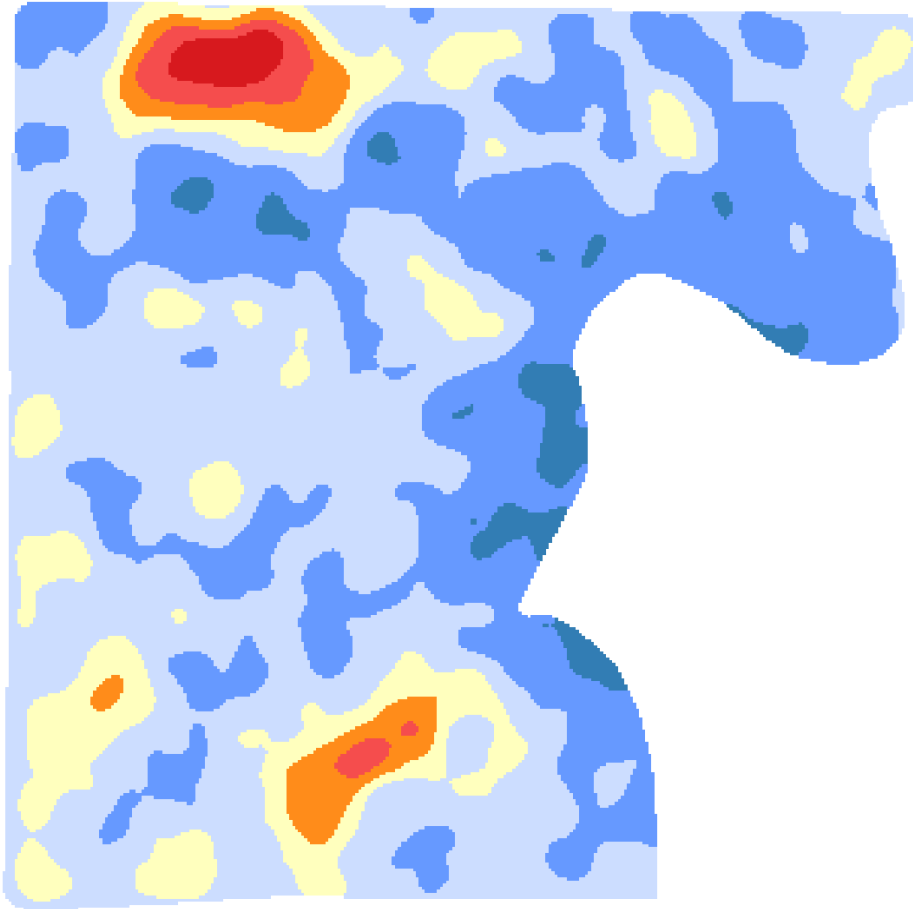
Client: Weist Farms
Farm: Weist
Field: W02
Sample Year: 2023

Min: 22.54
Max: 39.08
Acres: 205.86
Hectares: 83.31



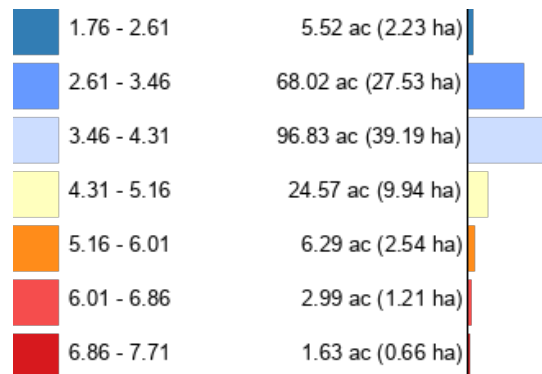
W02

Mn



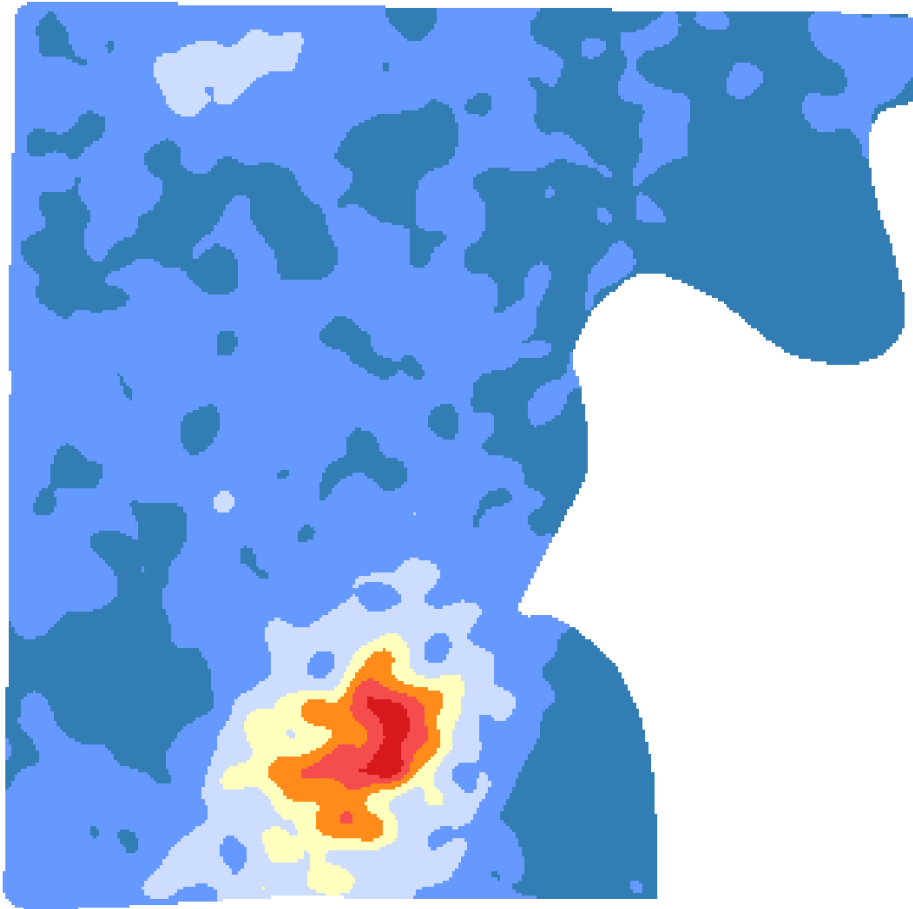
Client: Weist Farms
Farm: Weist
Field: W02
Sample Year: 2023

Min: 1.76
Max: 7.71
Acres: 205.86
Hectares: 83.31



W02

Na

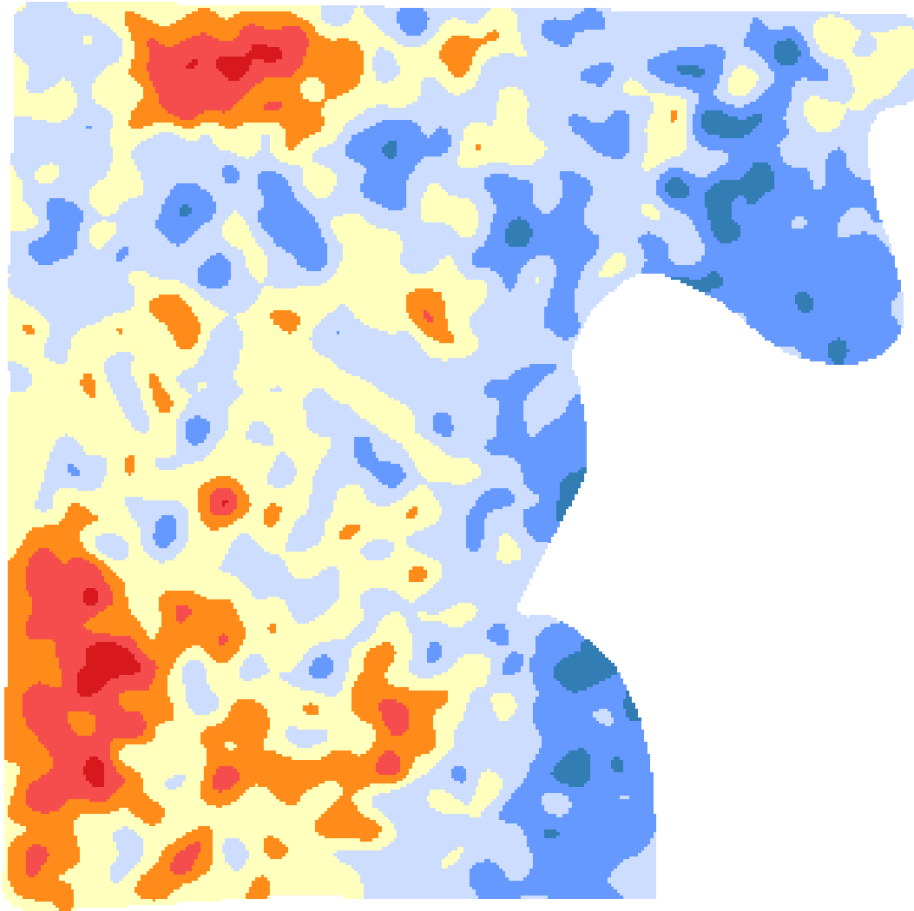


Client: Weist Farms
Farm: Weist
Field: W02
Sample Year: 2023

Min: 15.05
Max: 400.41
Acres: 205.86
Hectares: 83.31

15.05 - 70.10	73.75 ac (29.85 ha)
70.10 - 125.15	105.21 ac (42.58 ha)
125.15 - 180.20	15.86 ac (6.42 ha)
180.20 - 235.26	5.24 ac (2.12 ha)
235.26 - 290.31	3.31 ac (1.34 ha)
290.31 - 345.36	1.74 ac (0.70 ha)
345.36 - 400.41	0.73 ac (0.30 ha)

W02
NO3N

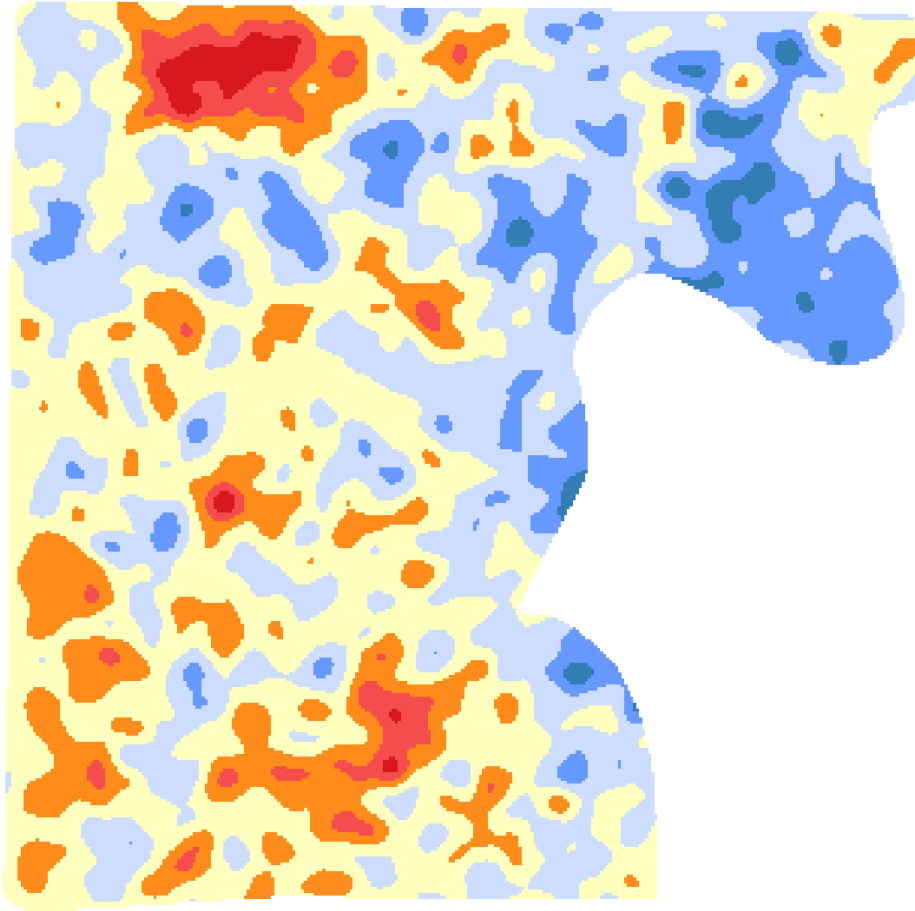


Client: Weist Farms
Farm: Weist
Field: W02
Sample Year: 2023

Min: 16.36
Max: 48.14
Acres: 205.86
Hectares: 83.31

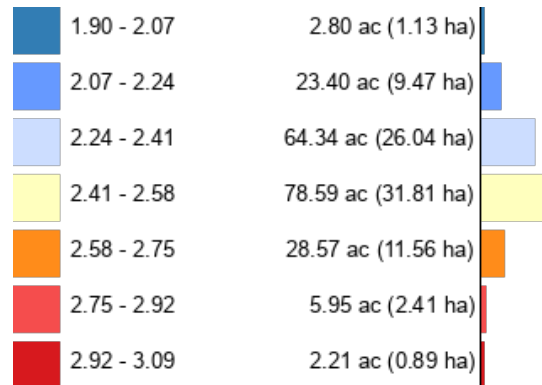
16.36 - 20.90	3.87 ac (1.57 ha)
20.90 - 25.44	36.25 ac (14.67 ha)
25.44 - 29.98	70.66 ac (28.60 ha)
29.98 - 34.52	60.76 ac (24.59 ha)
34.52 - 39.06	22.85 ac (9.25 ha)
39.06 - 43.60	10.09 ac (4.08 ha)
43.60 - 48.14	1.37 ac (0.55 ha)

W02 OM



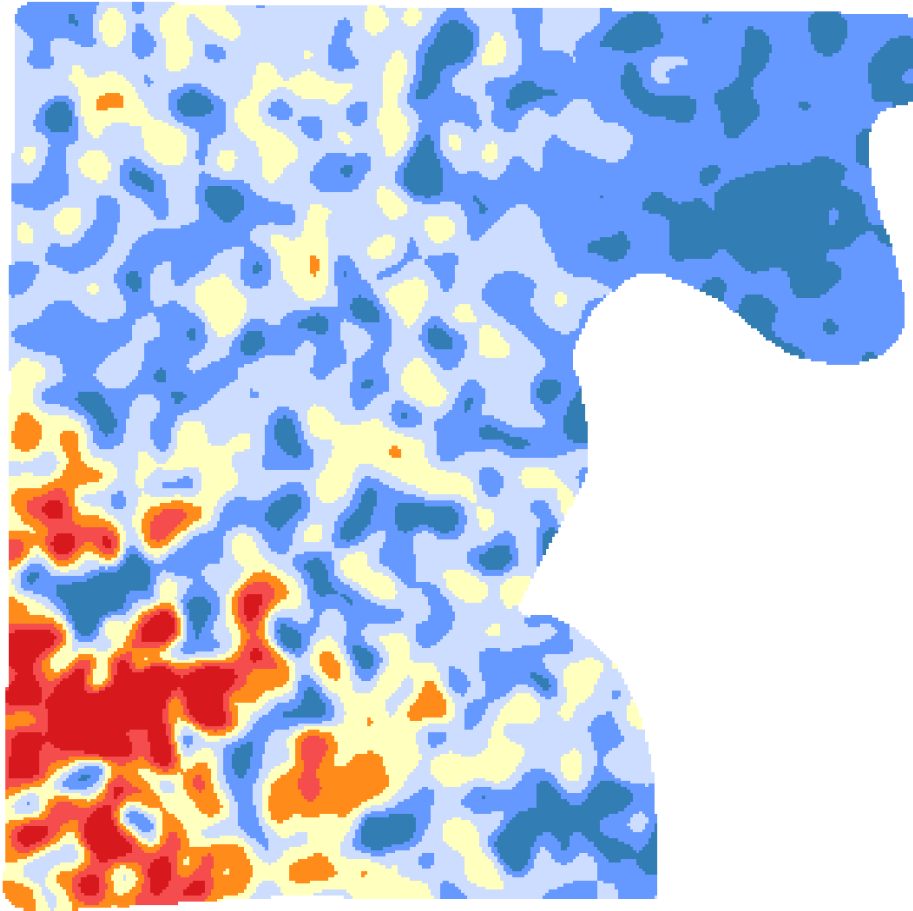
Client: Weist Farms
Farm: Weist
Field: W02
Sample Year: 2023

Min: 1.90
Max: 3.09
Acres: 205.86
Hectares: 83.31



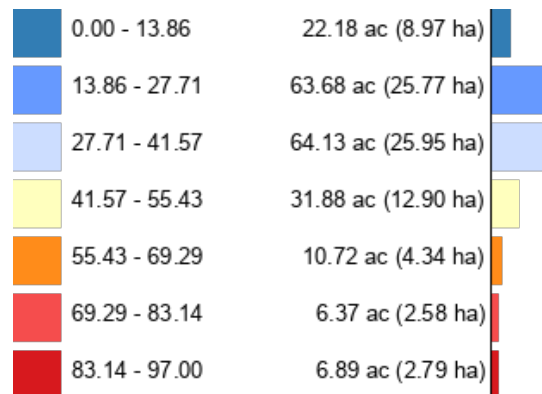
W02

P1

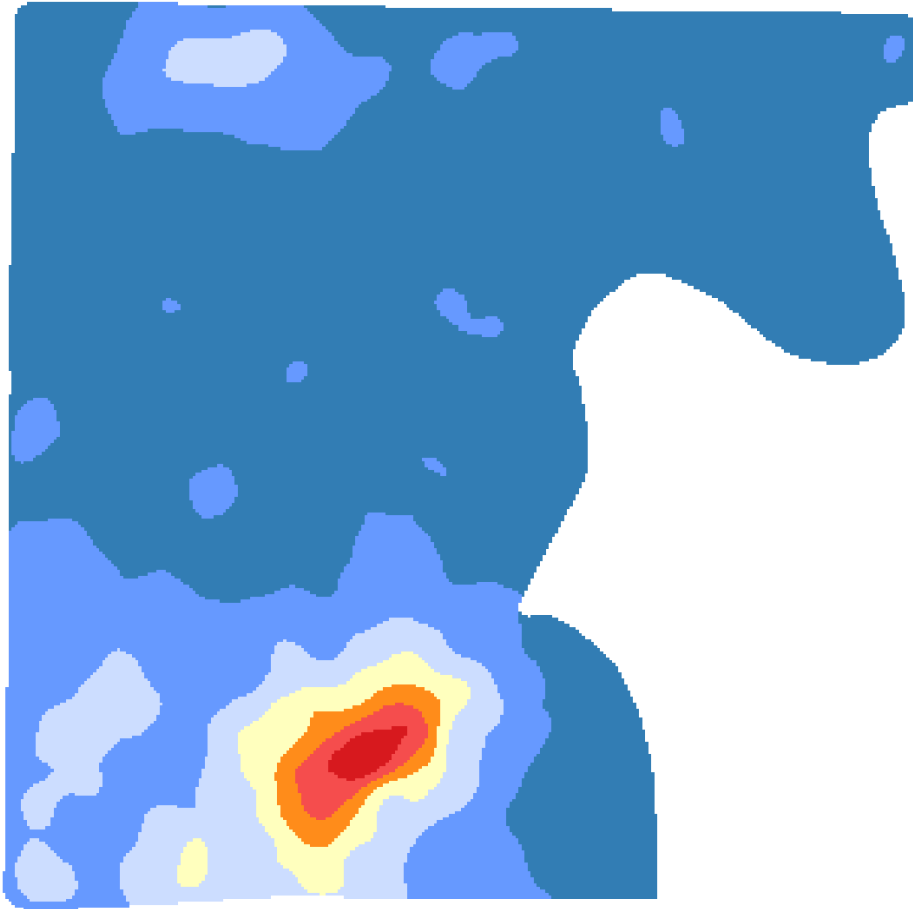


Client: Weist Farms
Farm: Weist
Field: W02
Sample Year: 2023

Min: 0.00
Max: 97.00
Acres: 205.86
Hectares: 83.31

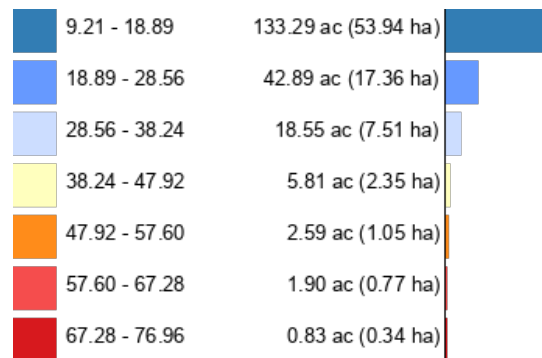


W02 Pbicarb

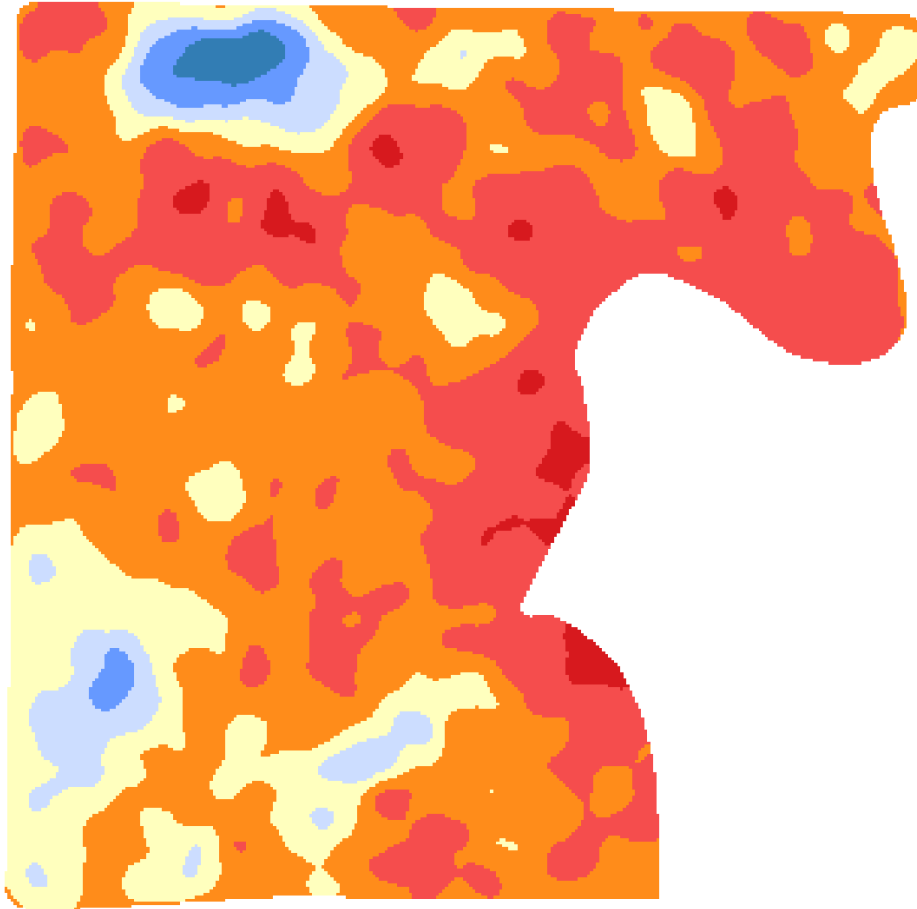


Client: Weist Farms
Farm: Weist
Field: W02
Sample Year: 2023

Min: 9.21
Max: 76.96
Acres: 205.86
Hectares: 83.31

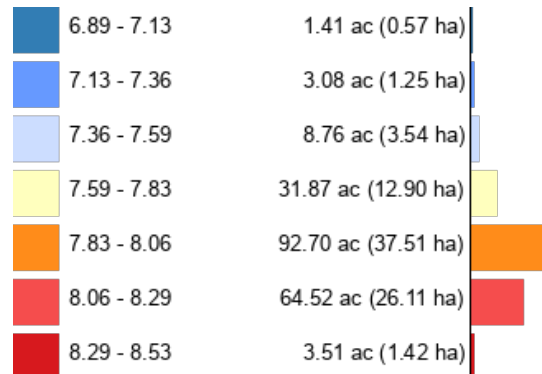


W02 pH

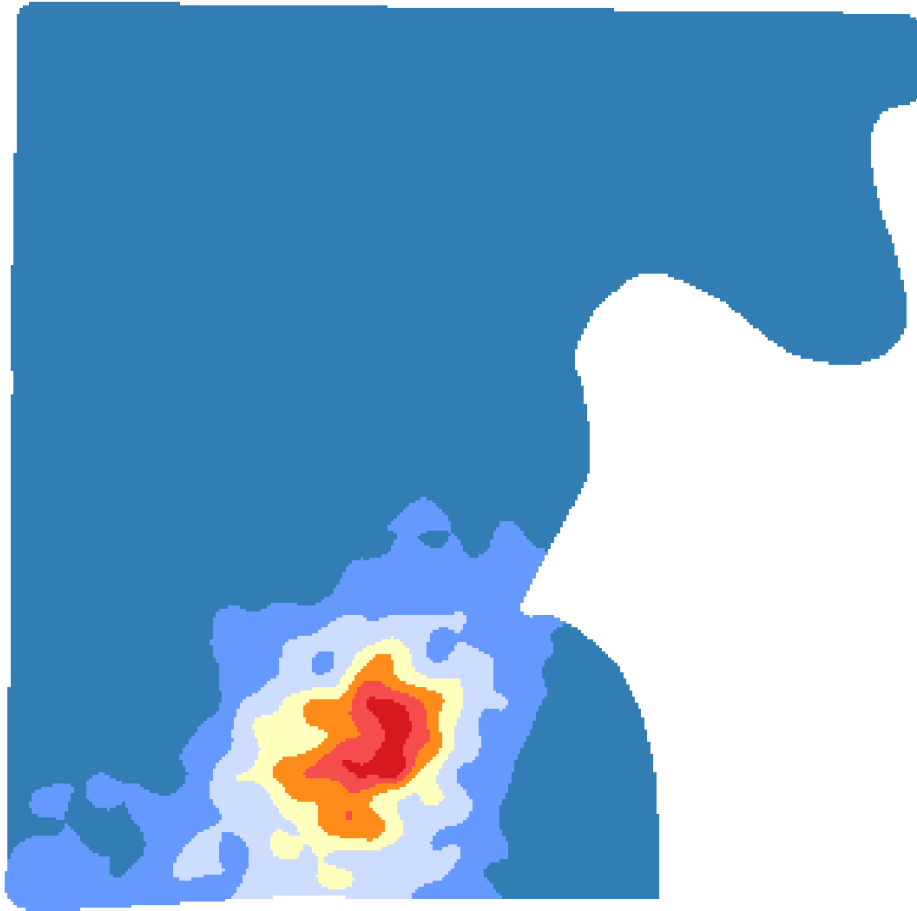


Client: Weist Farms
Farm: Weist
Field: W02
Sample Year: 2023

Min: 6.89
Max: 8.53
Acres: 205.86
Hectares: 83.31



W02 S



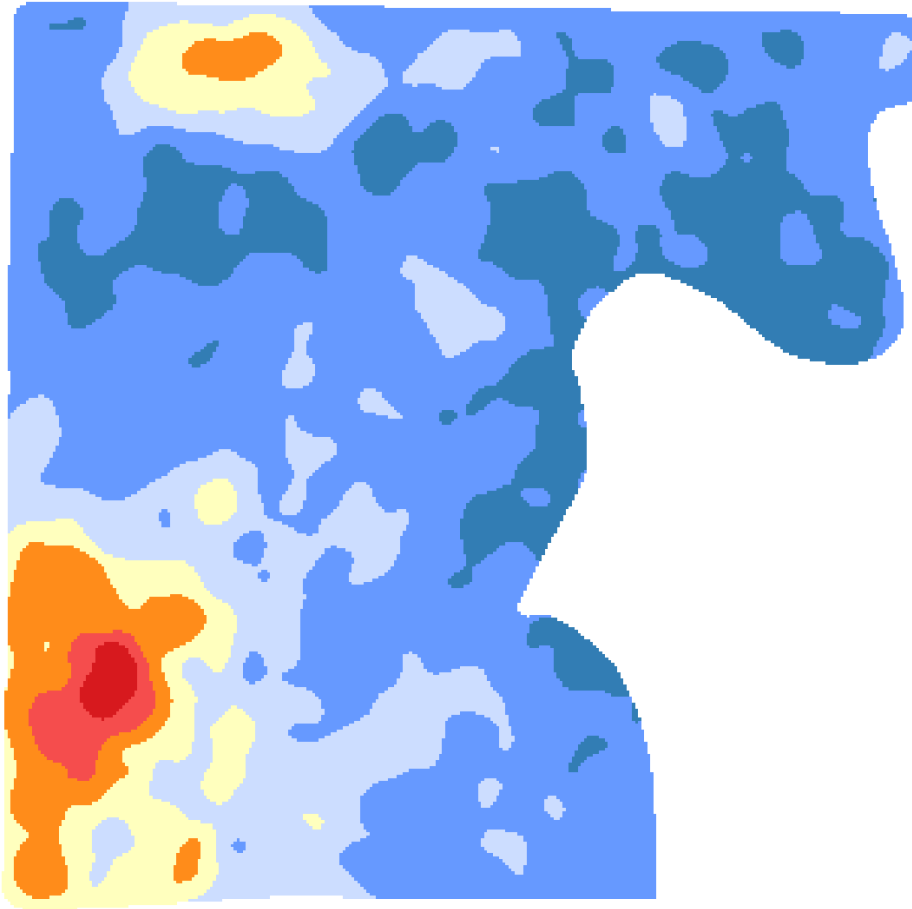
Client: Weist Farms
Farm: Weist
Field: W02
Sample Year: 2023

Min: 13.65
Max: 291.14
Acres: 205.86
Hectares: 83.31

13.65 - 53.29	164.67 ac (66.64 ha)	
53.29 - 92.93	20.37 ac (8.24 ha)	
92.93 - 132.57	10.41 ac (4.21 ha)	
132.57 - 172.21	4.60 ac (1.86 ha)	
172.21 - 211.85	3.17 ac (1.28 ha)	
211.85 - 251.49	1.75 ac (0.71 ha)	
251.49 - 291.14	0.88 ac (0.36 ha)	

W02

Zn



Client: Weist Farms
Farm: Weist
Field: W02
Sample Year: 2023

Min: 0.54
Max: 3.63
Acres: 205.86
Hectares: 83.31

