



## **Greenstar II or III to Topcon X30 connections and settings.**

**(with a Starfire ITC receiver)**

- the following pages show the connections and settings to allow the X30 to use the GPS signal from the **Greenstar II or III**.
- GPS signal is needed for Speed for Seeder, Variable Rate Control, Section Control and Guidance.



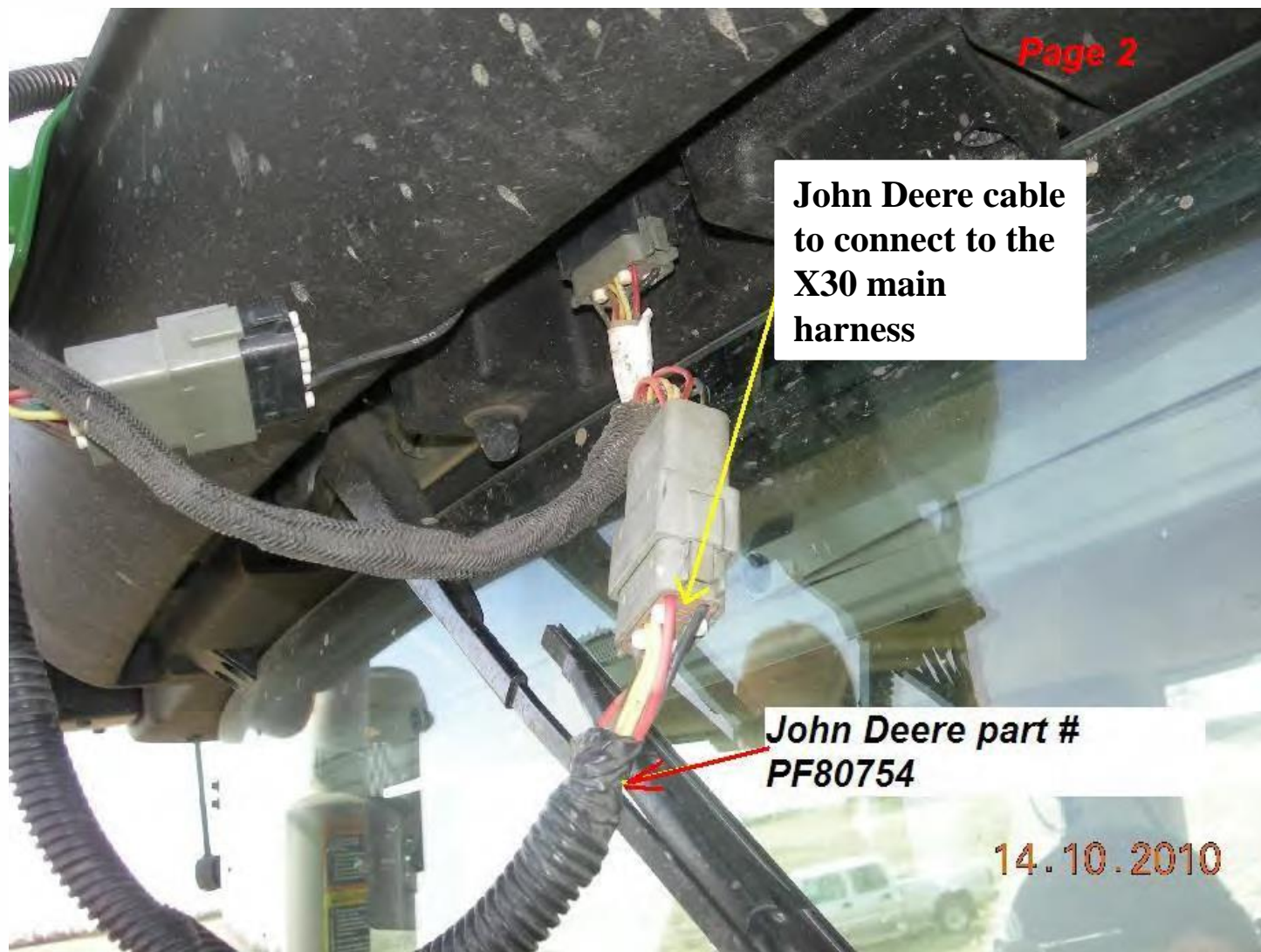
## HOW TO INSTALL JOHN DEERE GPS RECEIVER HARNESS TO 3rd PARTY CONTROLLER FOR GPS SIGNAL.

### PARTS THAT ARE REQUIRED.

- PF80754 John Deere harness
- A serial Null modem or a mini gender changer







Page 2

John Deere cable  
to connect to the  
X30 main  
harness

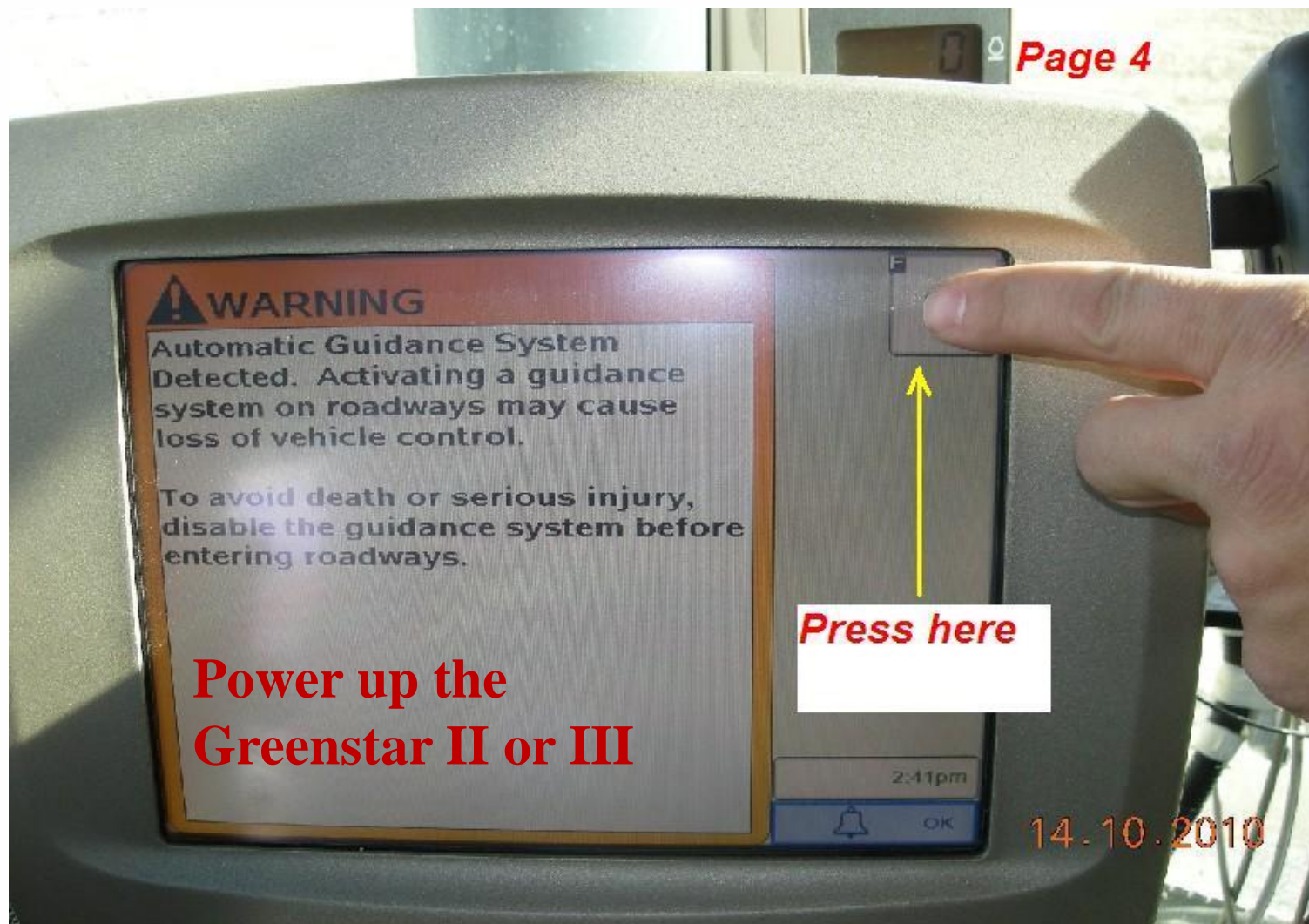
John Deere part #  
PF80754

14.10.2010





**FOLLOW THE STEPS ON  
THE FOLLOWING PAGES  
TO SETUP THE DISPLAY  
BAUD RATE TO 38400  
AND 10Hz ON BOTH THE  
RECEIVER SETTINGS  
AND THE X30 SETTINGS**

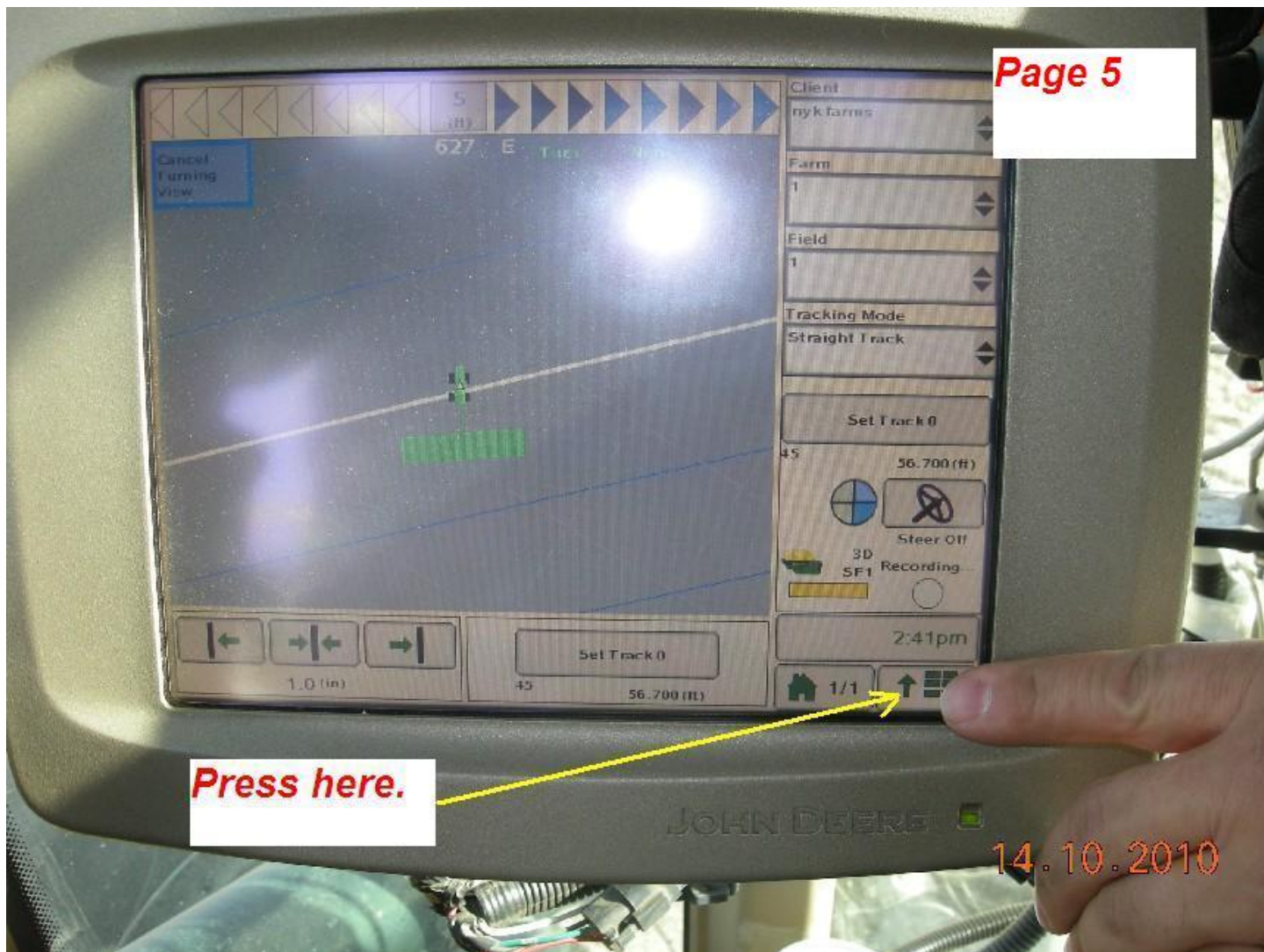


**WARNING**  
Automatic Guidance System  
Detected. Activating a guidance  
system on roadways may cause  
loss of vehicle control.  
  
To avoid death or serious injury,  
disable the guidance system before  
entering roadways.

**Press here**

**Power up the  
Greenstar II or III**

14.10.2010





**Press Starfire  
iTC Machine**

**D**  **Starfire iTC  
Machine**  
\$2514627

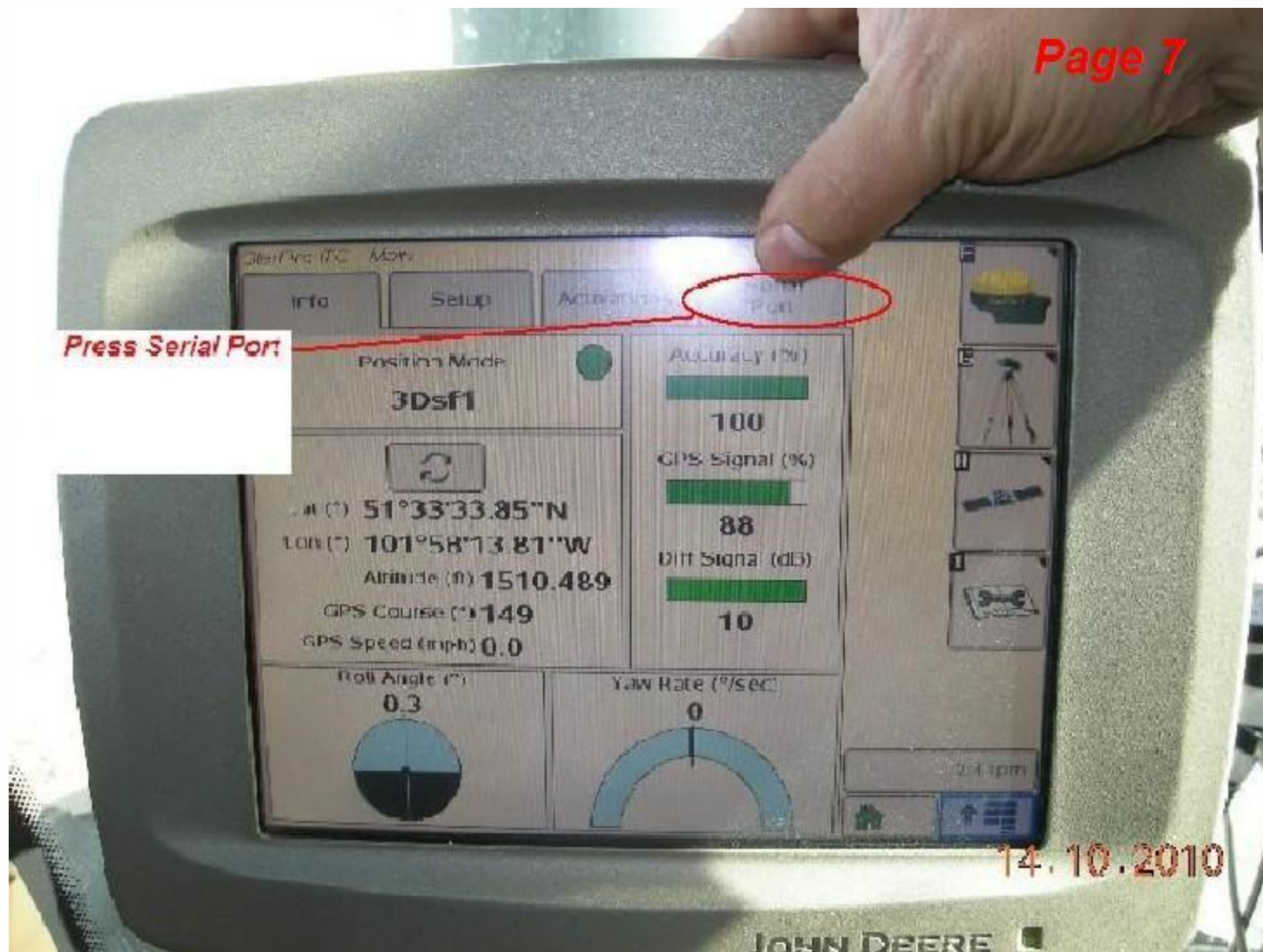
14.10.2010





Page 7

Press Serial Port



14.10.2010



Page 8





**The following will help you connect the Speed and GPS cable PF 80754 to the X30 main harness. There are two different ways to bring the signal into the X30 console.**

**You will need either a null modem or a gender changer depending which way the signal is brought in.**







## Com 2

**You need the null modem. Supplied with the X30 monitor kit**

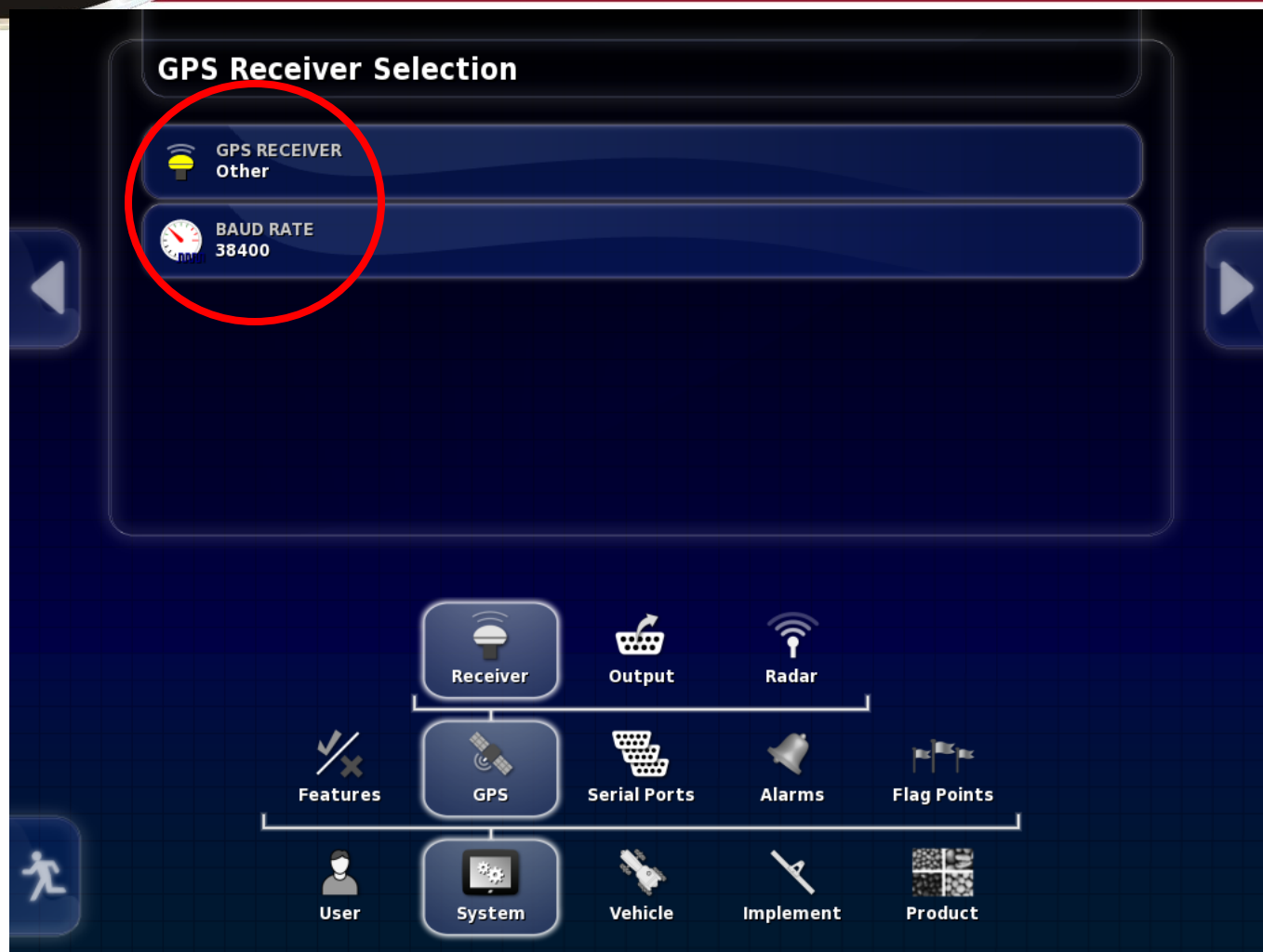




## Com 1

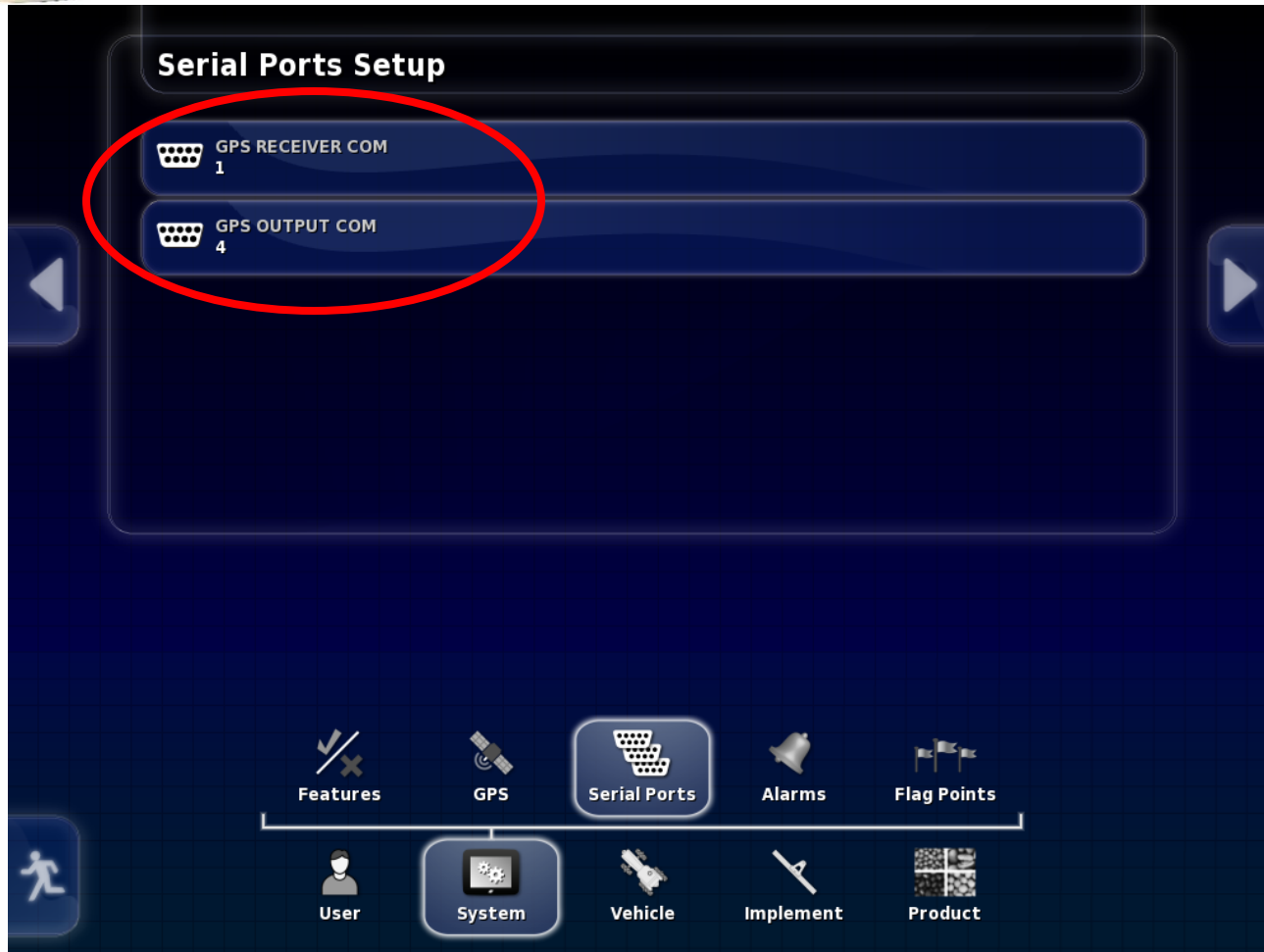
**You will need the mini gender changer that is supplied with the X30 monitor kit.**





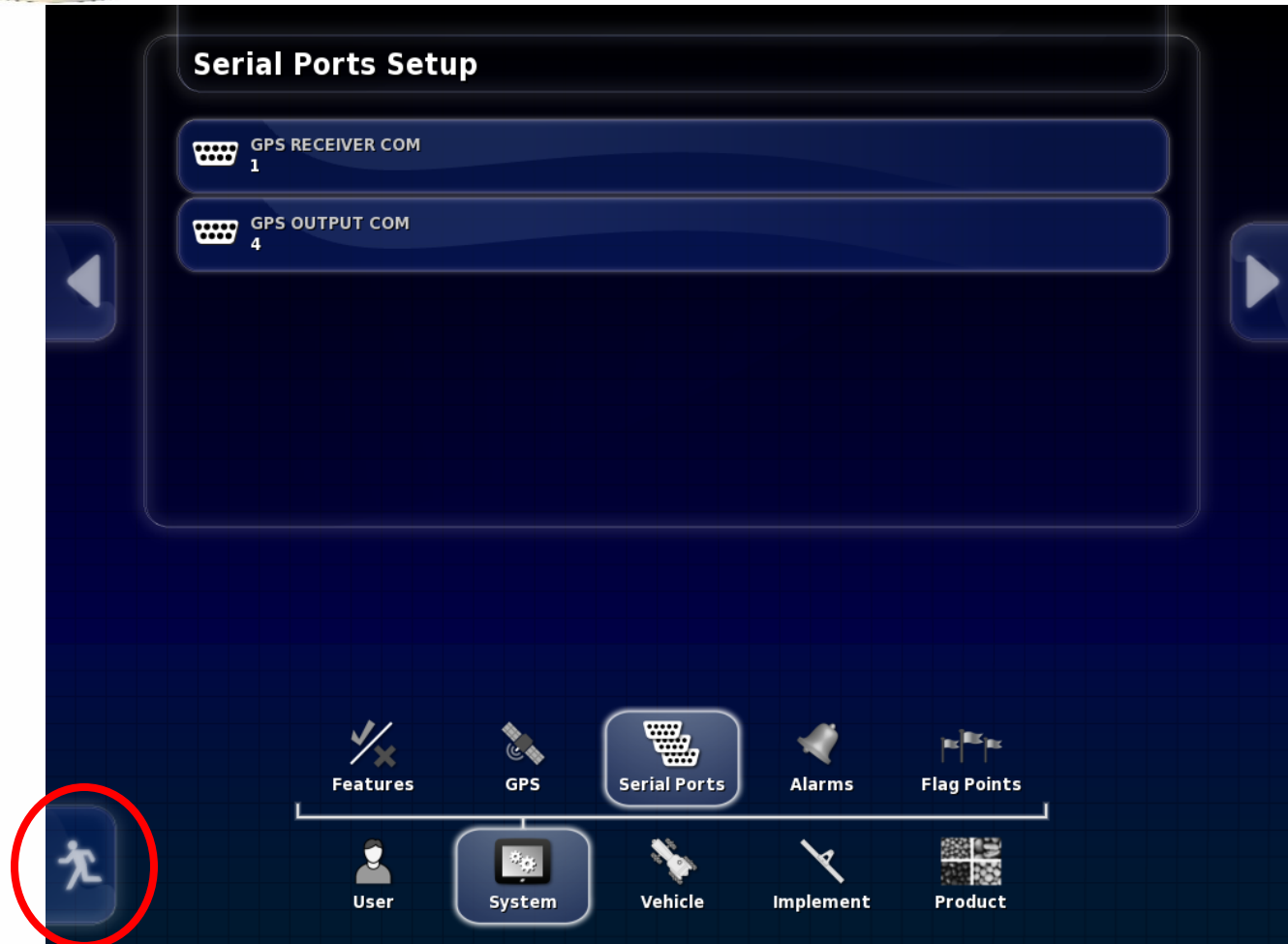
Set GPS RECEIVER to Other and the BAUD RATE to match the John Deere output rate





Set to match the way the signal is being brought in.

- Com 1 with the gender changer
- Com 2 with the null modem



Touch the Running man to enter the operating screen



**GPS Position**

LATITUDE  
0°00'00.07"S  
LONGITUDE  
100°49'05.03"W  
EASTING  
297660.71 (14 S)  
NORTHING  
999997.83

**Seeder Controller**

1: Empty

2: Empty

Requested Rate

0.0 lb/ac

0.0 lb/ac

0.0 lb/ac

0.0 rpm

0.00 lb/rev

Auto

Fan Status

(1 of 1) Section State: Full Width

0.0 mph

Expand the GPS mini view





Verify GPS position!