



A portion of the 12 acre lake on the property of the A. K. Psi Country Club in Atlanta.

# Atlanta Members Construct Country Club



"A lodge on top of the hill" is now a reality of the country club property owned by the A. K. Psi Building Corp., of Atlanta.

**U**NDER the leadership of Julius M. Lennard, Jr., members of Alpha Kappa Psi in Atlanta have made the dream of another country club come true. Representing an investment to date of approximately \$18,000, the project is the result of considerable work and planning by alumni over a period of years.

Members of the fraternity attending the 1947 Convention in Atlanta will remember the charming clubhouse, owned by Atlanta members, which was the scene of several events of the convention. This clubhouse was destroyed by fire in February 1951, but due to its limitations for full development and its increased value as residential property, it was decided to sell the three acres of land and apply the proceeds on a larger tract, with a lake site and other possibilities considered when the club idea was first conceived in 1938.

After a year and a half of intense search, Eric Holmes and Floyd Boggs found a likely tract of acreage near Duluth, Georgia, 24 miles northeast of Atlanta, and after due consideration its purchase was agreed upon. Eighty-two acres, three-fourths of a mile off highway 23, were bought, the purchase being concluded in October 1952. Development work was begun immediately. Although the property was only a rolling tract of pasture, farm and forest land, without any lake or usable buildings, the imagination and work of members have resulted in a beautiful crystal-clear lake of 12 acres, stocked with bream and bass, a spacious clubhouse on a hill overlooking it, and plenty of room for varied recreational activities for members and their families.

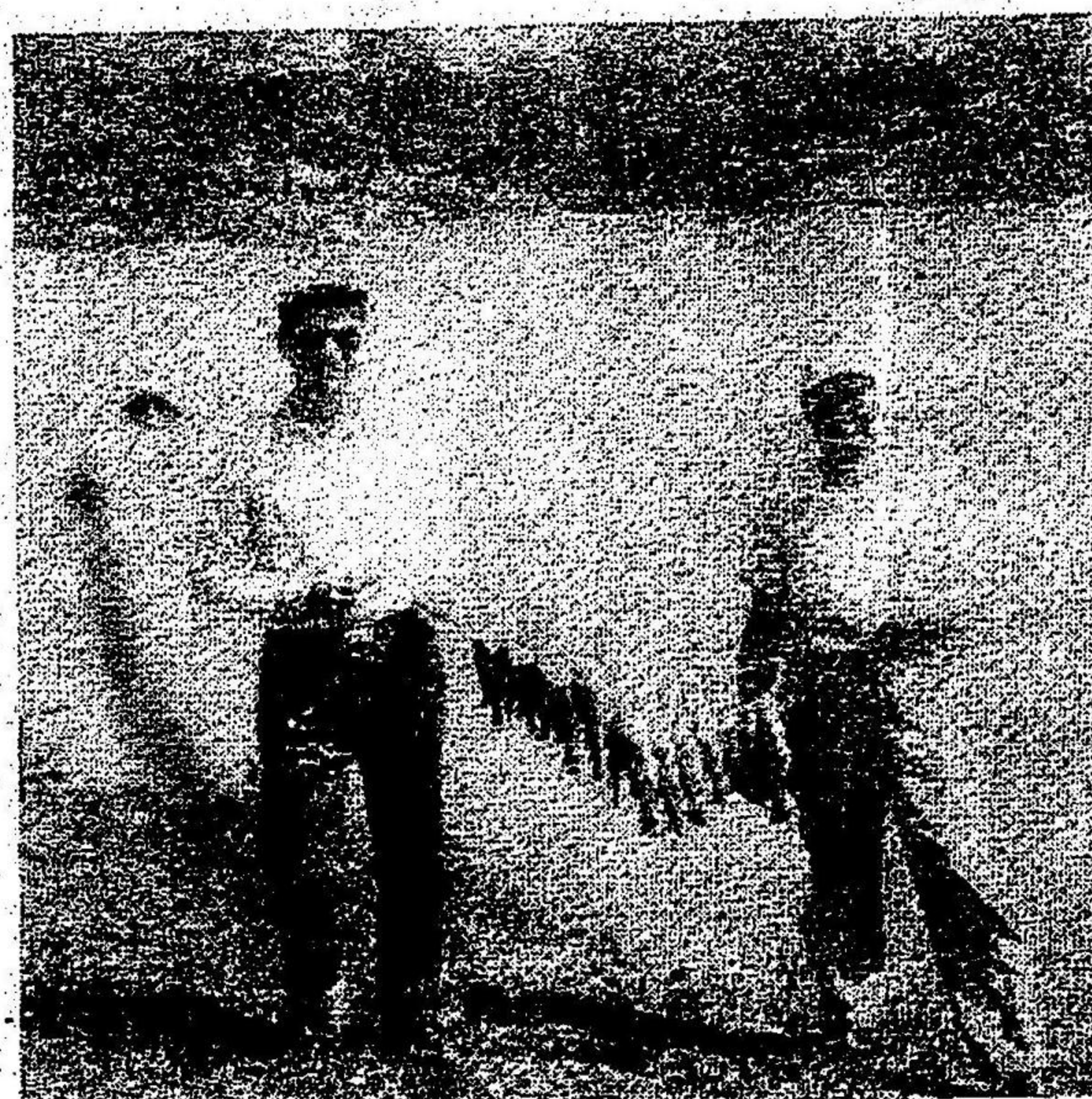
## Construction of Lake

The construction of the lake was the first project undertaken. Tom Eldridge, a grading contractor and an A. K. Psi alumnus, was engaged to clear the lake site and build the dam. The earth dam was completed in January 1953, and the lake was filled by early spring. The dam is 30 feet high, providing for 25 feet of water at the overflow, and is

425 feet long, containing some 25,000 cubic feet of clay and subsoil. A dock was constructed for swimming and the project was partially in operation for boating and swimming during the summer of 1953, becoming a popular gathering place on hot summer weekends. The lake was stocked with bream and bass fingerlings obtained from the State of Georgia fish hatchery. The fishermen were impatient until they grew to legal size, but that day finally arrived, and fishing was inaugurated on June 5, 1954, by a fishing jamboree for all members and their families, with prizes for men, women and children. Fish were caught then and have been caught regularly since, but the Izaak Waltons looked forward to this spring when the bass and bream will both be of an age to provide even more sport.

## Clubhouse

The clubhouse was a more involved project. After considering the possibilities of erecting a building, it was learned that Lawson General Hospital near Atlanta was to be dismantled and its buildings sold. Decision was made to purchase a section of one of these buildings. A \$4,000 purchase provided a



Are there fish in the lake of the A. K. Psi Country Club in Atlanta? There are according to Jack Caldwell and his dad, who caught this string of bass recently.

suitable structure. The building was cut into two sections and moved to the club property on trucks up the highway. Thus a roomy, well-constructed "lodge on top of the hill," overlooking the lake, became a reality much sooner than otherwise would have been possible. The structure is 111½ feet long and 25 feet wide, and includes an enclosed porch, a main clubroom 50 feet by 25 feet, a small kitchen and rest rooms. Facilities for a caretaker are also provided at one end.

Saturday work parties, consisting of alumni, and student members of Pi and Alpha Chi had already handled many projects in the development of the property, but they pitched in again on the clubhouse, cleaning, painting, repairing and wiring, and the building is now ready for use. Julius Lennard, Earl Styring, Bob Dempsey, Archie Adamson, Floyd Boggs, Butler Webb, Herb Stem, and Jack Thomas led the work details. Completion of water and plumbing facilities are on the agenda for early spring, as well as landscaping and picnic facilities around the lake and boat docks on the lakeshore.

## Financial Plan

To be entitled to the privileges of the A. K. Psi Country Club in Atlanta, a member of Alpha Kappa Psi must join the Alpha Kappa Psi Building Corporation. A participating membership costs \$100, plus \$10 annual dues, which at today's recreational market for similar facilities is most reasonable. In addition the member is contributing to the continued vitality of the fraternity in Atlanta. At the present time there are 100 alumni participating members, which it is hoped may be expanded to 400, in addition to the student members of Pi and Alpha Chi chapters. A number of alumni have also made contributions to the project.

Julius M. Lennard, Jr., former grand vice president of Alpha Kappa Psi, is the corporation president; Archie M. Adamson is vice president; Dougald M. Avera, secretary; Burton K. Davis, treasurer; and Floyd E. Boggs is chairman of the Board of Trustees.