

# Cancer

B1

An electronegative,  $\frac{1}{3}$  charge, equilateral of the sun's placement per its duty  $le^\circ$  ( $[:|oo+)$ [right atrium] squared in an Individual's production of sight: ( $|oo)$ [stem].

$$E/\gamma z = c\gamma$$

(Energy/Right Atrium x Membrane = compound).

Plate Tectonics  
Copyright: I-4465582771

Title: Teoria Eo  
Stefany Fisher

# Mass Forms in Vision

## F-fY/E. The unique O in Subatomic Mass Function (z).

- Pressure systems. UT w
- Uniform energy.
- Cancer forms in Vision.

### 6.√° (highly cerebral); Conjunctiva U.

How the left eye works, form b: *"Glucose levels under sunlight require (force fields) to collide under (1) system weight" [purple 1]*. Based in psychology - (refraction) - from the cerebellum [hydro-nucleic acids found] in the [Angular vein (vertex)]; is the membrane at a general belonging to hypoglycemic index cultures [receptors]; and is acidity based on levels controlled by Nitrogen, in unique frequencies and intensified by (1) = memory. Memory is a pulled platform reliant on a molecular structure and as a nuclear muscle it must contract to refract; it must be used as a conductor to form [electricity], (Law of I). The spine passes light through the cerebellum and mass splits by combustion during uneven tones of moisture [vertex] (sunlight) to measurement [Li]. Waves within the human axis are already forms for solidity under gravity, [growth]. The radius supplies the velocity in the radial alignment for nutrition as rotational effects [composites] of consciousness under 0 degrees and is pulled in unit weight (:100+) out during gravitational rotations of the axis (light under a 1° squared unit equals refraction), [OD].

The diameter of the eye; it's net weight, is carried through stages of sight and into its 10<sup>th</sup>, as time melts by serotonin; the electromagnetic pulls have the ability to meet at a specific circumference [(water) 100]. At certain index, (1/4<sup>th</sup> degrees will vanish); and the nucleic fields form value and will over-generate units to split specific [lens] by formable degrees of sunlight (UV); and under properties (gases), the sun will be the exponential found at the radius at X amount of pressure [X ray - (the diameter)].

Electromagnetic fields to pulls of the nervous system (pulse rates) gravitate outward as electricity pulls intricate light in; the lung will hold the same vacuum weight to volume as cells do to electricity [frontal lobe 1° - (mitosis @36°) to form instinct : the sun (bonds [ero-plasticity:[17]]); which electricity pulls up (from the radius) into ([uterus]Y1); and into blood cells (format ь, -c perception).

The entire memory platform driven within a single unit is a system that can be checked  
● under the Eye at certain fields of axis.

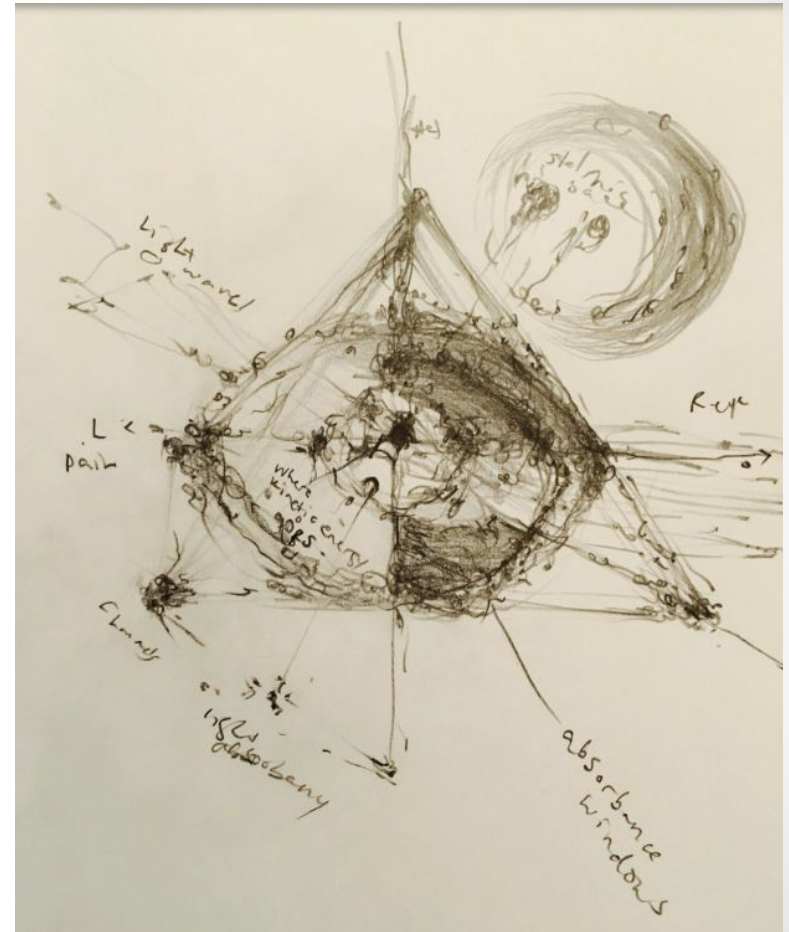
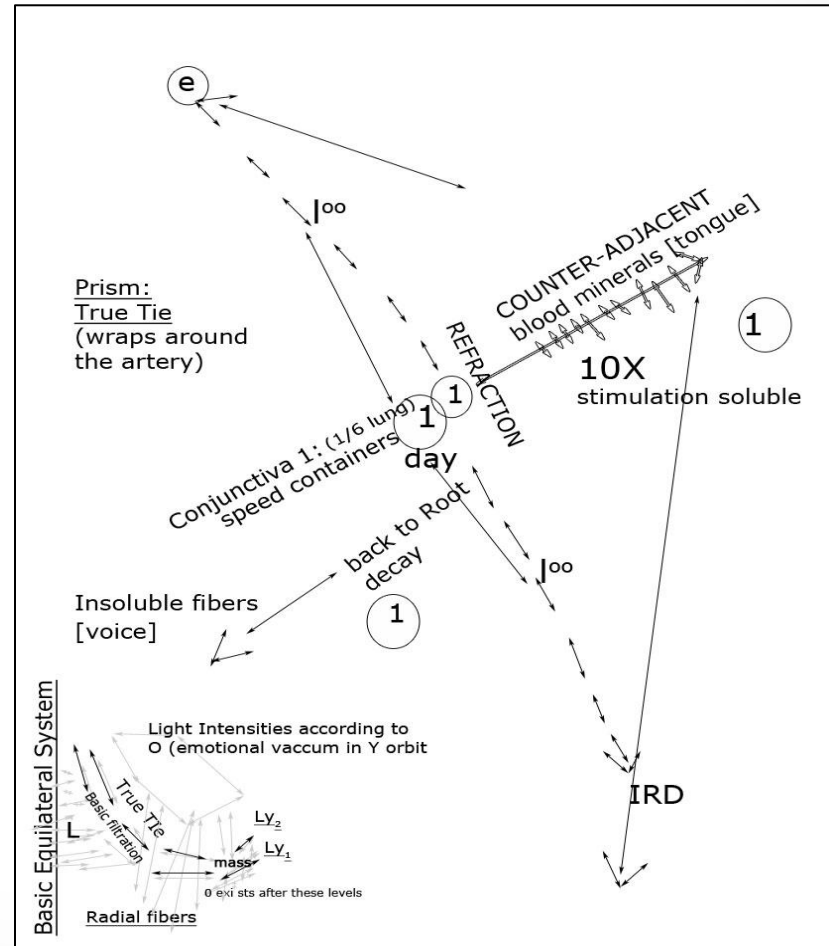
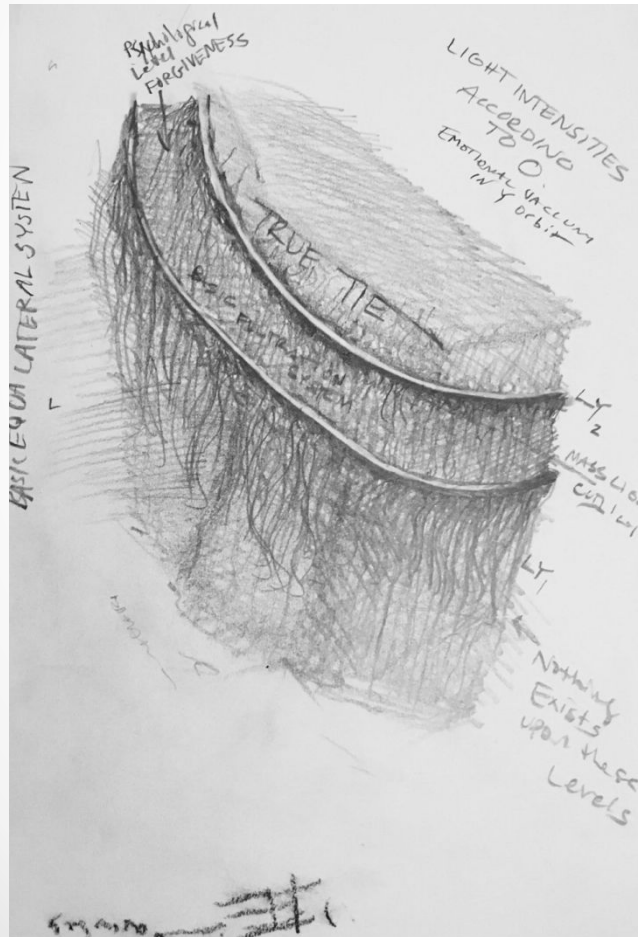


Image: Right eye, from 3° pull at radius in the atrium.

(in Aerodynamics to Human blood form B)

- 1/5 pulled sugars proportion to sunlight = width (conjunctiva to radial fibers for growth, [pH]): Systems P of [Ly cultures].
- Healthcare begins in the Eye and then is quadrilateral to the human function in levels of the heart (Formula 2 of wavelengths).



# Root 1 to Stem Cells (the body arranges sunlight)

Masts in Formula 2 [fields to root] = Brain weight to water: (loo).

Carbon melts as a pendulum at 36 degrees under the sternum.

<https://stefanyfisher.wordpress.com/pentilum/>

In subatomic form [cii], the vertical measurement of (vertebral) lining opposing systems (force by chemical reactions in radiations), causes the aerial pressure to square under 1 unique unit, the Retina cell, (Prefix R).

**Define blood pressure: Levels A (subatomic) are gradations of light. Heat reacts to 1 whole unit [conjunctiva 10].**

- 6 (a)  $1\sqrt{0}$
- s-g, sr/g, and G/EC = your derivative.

(ME) = The mass of energy.

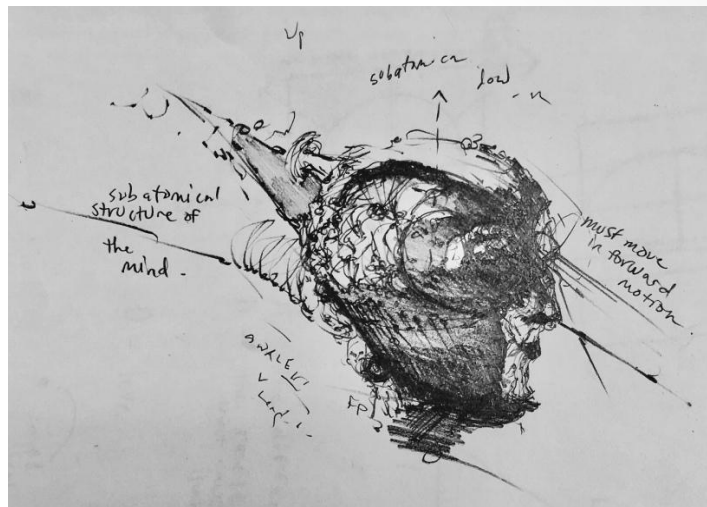
• In hormonal imbalances; electronegative concentrations under the Retina cell (gravitational waves° = [given tissues] (exponential squared the compound = net weight) are to control bases of nitrogen levels (Wharf system, path P). What releases into the air is estrogen or hormonal weight in X; (left brain fields are the nervous system's magnetic function equal to light [atomic mass function by blood sugar or shell division]). The left eye rotates heat *quadrilateral* as aerial degrees divide oxygen to supply oxygen as [1/10ths] 3/4ths to width contained in C and then [blood sugar] the spine distributes it to = E.

• **The body** (96°) body mass = uses of massive supplies (ME); and it is consistent by factorial ranges of O as a parameter; and is by X as a constant variable by B, because it is in motion.

• By the heat of the absorbent (fibers), [extract] containers [of light (muscle)] must melt or "fall" by instance pressures relying on heat (oxygen:[serotonin]); thus its progressive fibers (exponentials) will be dissolved by [gray scale] gravity into the cerebellum; and is raised in blood sugars in order for heat to rise again (hypothalamus).

• By basis G (gradations B quadrilateral); subtle light to uneven fluids (blood vessels) are mixtures of gas, or radiations as subjective waves (mass), and are consecutive [plural] or made to mass by organisms parallel to the total [hormonal] electronic makeup of the red blood cells, (Resource G); because of magnitude, the heat (hormones [Nr]) in the bloodstream is its (4<sup>th</sup>) consistent direction in that it pulls from as it flows by derivative (the abdomen) – a net culture to O; **which is the anatomical design.** The composites are found in (–e) [electron]; as a derivative to: [serotonin], form b of the photon (A1 di) [Platform A]. 98.6° consistent (blood type dynamics in C).

## SHEET 1:



**6√¼ In G=I how radiations to sunlight form (Absorbants to sunlight).**

Based on time release (blood vessels), so are chemical weights to compounds (light re-storage systems P). Refractions are (bonds) hidden in the bloodstream. Oxygen levels maintain system's blood pressure by leaving traces (membrane) in the mouth. To oxidized cancer cells, is red:red volume x height (a red velocity (charge hormonal growth [radioactivity])); red rations in proportions of visible light; because of light decay, its protons must come out of the threshold (vp) [thorax]. On a limited timeline, the electromagnetic spectrum [sperm] has a job to do: with other organisms (Na):[serotonin]. It must pull white blood cells (extraction x heat) [compound] out [phosphorus] (sugars) equaling as it pulls in sheets of layers as as a divisible to shells [death]. A reversal axis to the membrane is a 3/4<sup>th</sup> derivative to blood cell culture. In tissues, as *sheaths* [sulfurous] is squared in the main component of the body (compound) – Nitrogen is its wavelength to the derivative. It is a single [stem] by oxygen as a nitrate ¼ conversion to the human time relapse [Type A] (axis). Time releases air pressure in its states of vision as reproductive cells [organs]. Under visible light, it carries light over as a weight (96° sub-vertex) 1<sup>st</sup> net weight [sub – vortex] and as a spectrum (proton) to aerial division; it is elevated in the membrane by 3/3rds volume by - the spinal cord at unique measurements (of gases); [(cl): cells burn width to heat at (– charge [ly] [fY^I within the light spectrum [Ego] decay]. Radio waves react to the same reactants; red blood cells over white is the shell's refraction (half-life), and the heart's nitrogen-base (inertia energy) is the body's rations to (f) as the *fibers remain consistent to X*, the benefactor to the [electron]: (1) Sex organs are to red bloods cells as shell breakage or in 3D cell division. (2) Distortion of eye sight is the same as electronic weight found [veins](posterior) in density to the torso or to the index [pulmonary 1]; (3) Because of [sheaths] the pituitary gland, and of her ovaries, timed speeds to wavelengths are = to sound waves to decay in day cycles found in left symmetry or left body cell division as a whole body unit.



# Dream Cycles: how to check decay

fY/E. (heat layers found in masts).

the Subatomic weight of oxygen (8) by energy by 3 (shell division) - (cholesterol, serotonin, and nerve cell endings) - take then the sulfur squared by inner to outer environment before the sun.

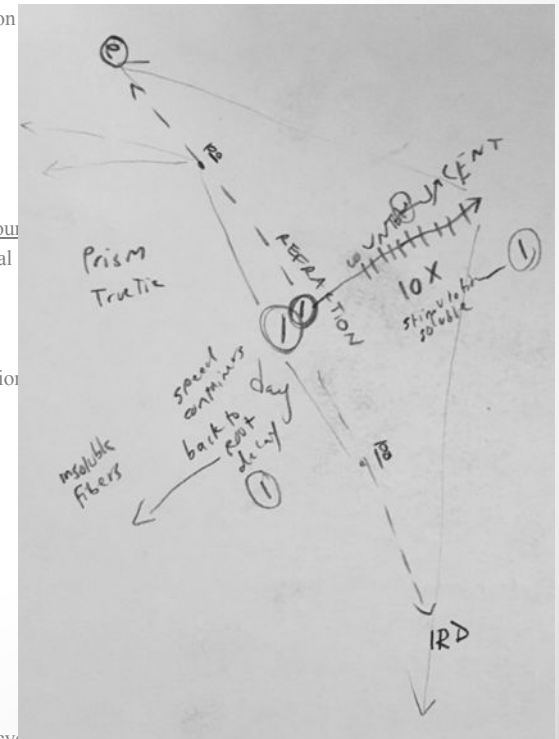
These are your dream cycles.

**Your Proportion:**

- Take this and then sub carbon— the vacuum weight of the individual to the total amount (XI) of volume (cl) in given environment reduced by fat by each polluted state of the given membrane (glucose cell). Checked under the eye.
- Shows the amount of reduction to impulse per environment squared of its weight. Before the sun.
- Then add your cholesterol to each given [benefactor] to reduce fat in buoyancy by sound to vision reflex. This is your full vision belonging acids to each individuals needs [electron] based on serotonin in reduction to lactose intolerant defects.
- Meaning the amount of cholesterol to serotonin intake depends highly on the sufficiency of the environment, divided by 3.
- Then make copies.
- In blood: from chloride - (uterus [nerve to [stem]]) ~ (orbital measurement about the reactant of the rhythm and its weight is around amount of estrogen that can be pulled by fat from the time of day to the time of friction between chemical abundance (hormonal to the serotonin proportions of the membrane.

### Re-storage Systems from decay:

- The weight is then found in the melanin levels under UV rays. Check the amount of UV ray damage to the amount of  $\left[\frac{\text{friction}}{\text{pH}}\right]$ . Reduce it by fat. Get x. (-e) of Health deficiency.
- To reduce chemical risks of fluoride entering the brain before time occurs:  
Nerve endings on vision is a Nitrogen base to retracted sunlight (absorbance - subcontracted squares)  $G - IQ$ .
- Nerve endings— the amount of heavy metal to the environment per glucose and divide that by 3.
- Take the intricate squares and reduce friction by the force of nerve endings to buoyancy in  $t^2$ .
- Take that by equal impulse and get sound recurrence to find its polluted states.
- Revert that to the time and energy before 1 day in eye pressures. Reverted simplex to the carbon ion; e.g. (bleeding menstrual cycle)



# Blood Development

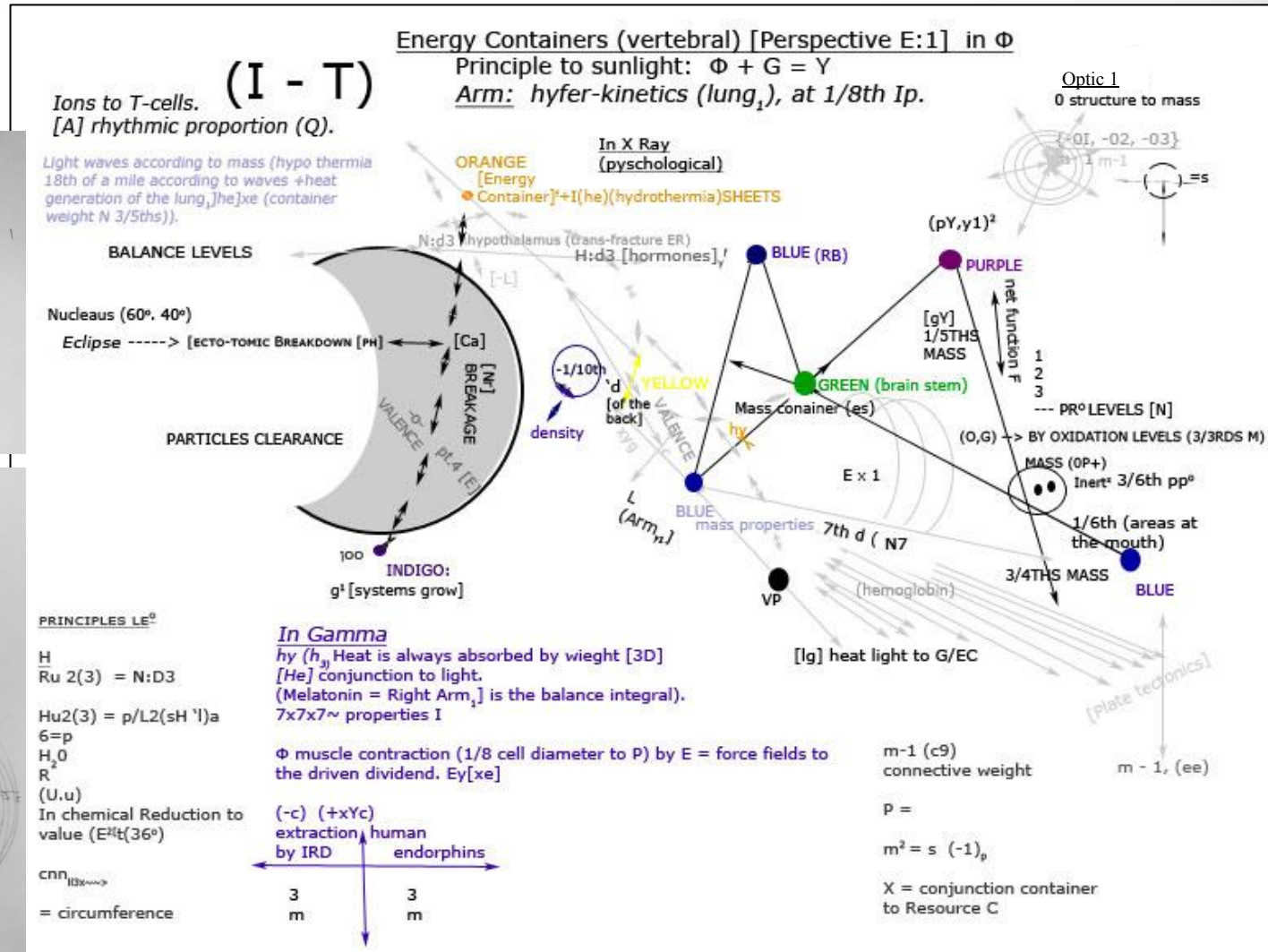
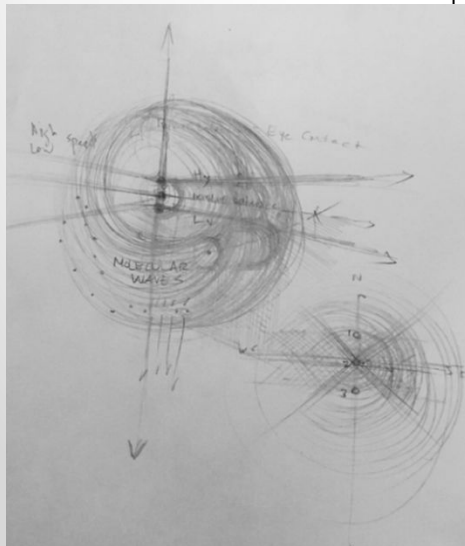
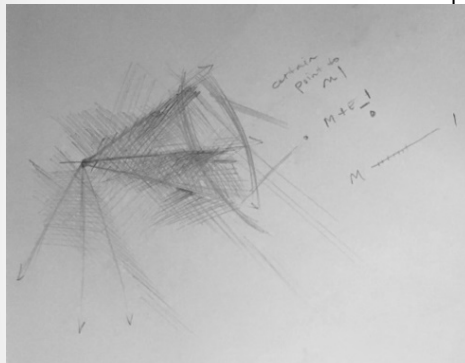
The nature of the given context (Ly cultures P): [fY] (common bone structures to fluoride);(in female).

Hypothesis:

$$\text{If } 2L \sim 0 = -2 + 1x \sim 3\log(r1(6))$$

$$\text{Then } -1(0)/x(sA) - e^2 = 0$$

**Gravitational Momentum**



# Conscious Development

Basic blood circulation below the sternum (X-8net [sii]).

Hyfer-blood extractions – P (0P+):

*Basic circumference [sun] C.*

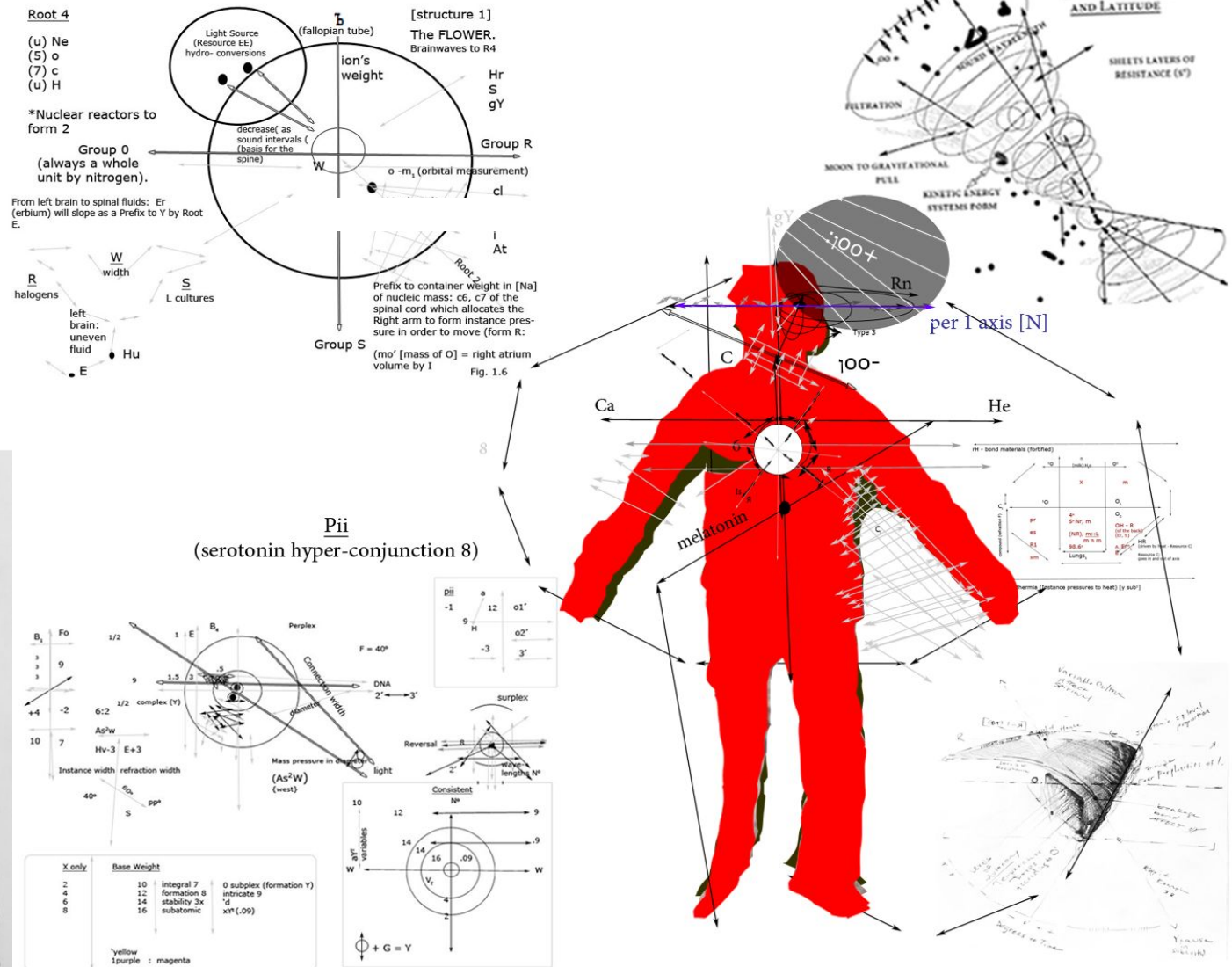
- [Sii] conscious weight  
[through sodium]. *Spiritual*.
- [Eii] energy movement.  
*Emotional*.
- [Pii] physical reality; (seen  
collective bias [memory]).  
*Physical*.

Visual Functions (cortex = root diameter): [Cii] subconscious spatial system. Net weight will arrive in conscious development by the derivative (m)  $\square$  Ly cultures  $\square$  c,(cl)  $\square$  m (root function(F) – {[Platform R]}).

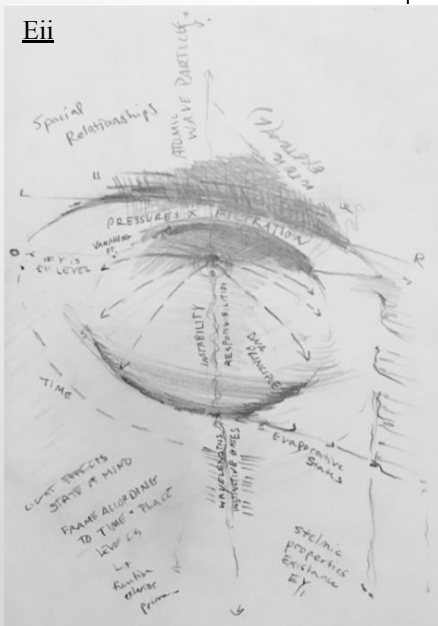
Cii

### PRINCIPLES OF DECAY (1/3)

Sii



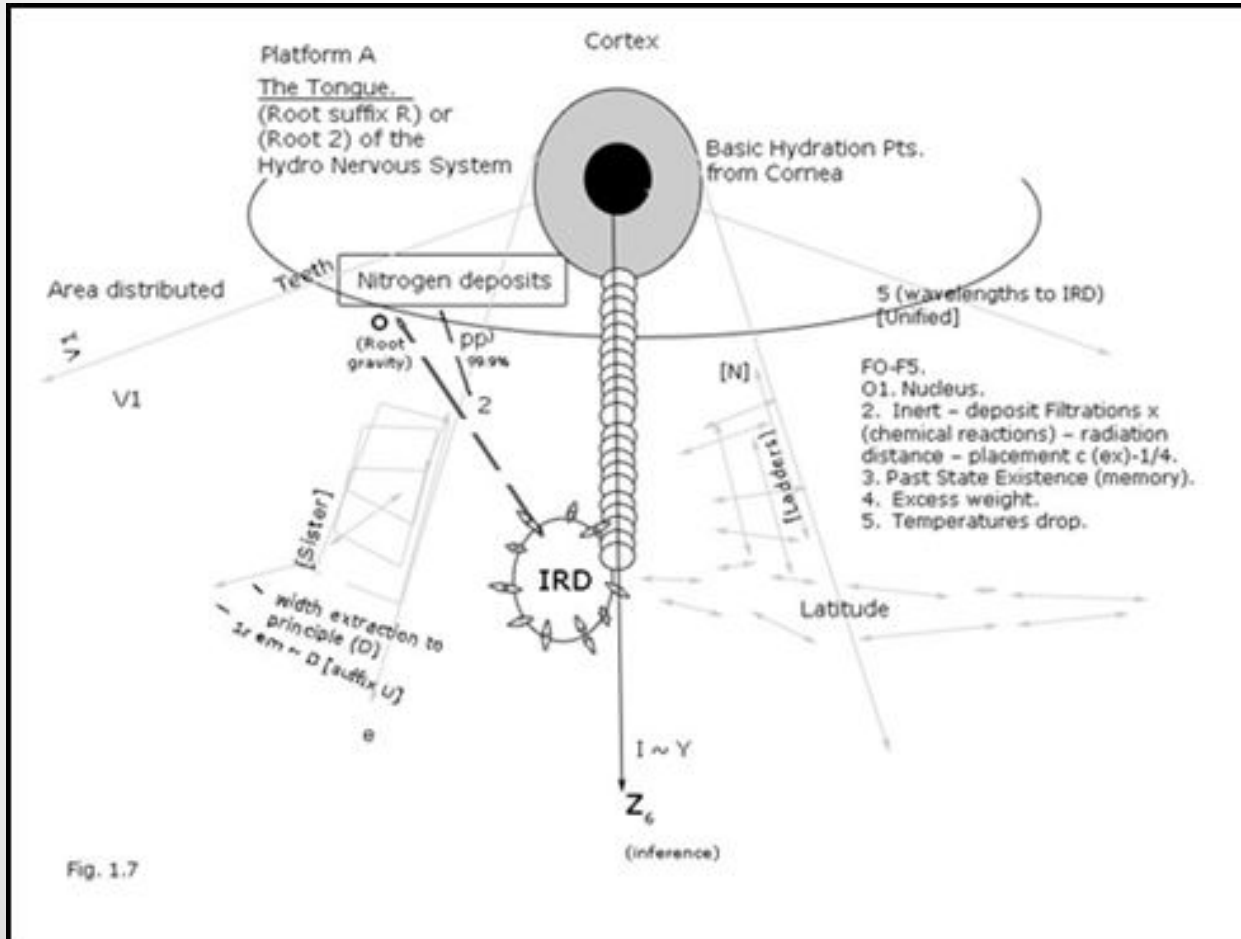
Eii





# Platform A (Autonomy [Atrium])

- [AB] molecules, infra-fraction brainwaves (P [IRD]).
- Carbon to *ero-plasticity*.



## Digestion (.4+):

Pt. 1: Count cholesterol to Y database.

Pt. 2: Ion structure: Inert degrees will be found in dopamine.

Pt. 3: Magnetic form I pulls in Unity Optically. (bonds and extract c1- c6 spinal cord [plural in white]).

Pt. [blank]: The scotoma, Value (L/D@0).

# Anatomy

## common denominators

Brainwaves:

- Brainwaves cause the nervous system to react under pressure.
- Given time degrees (velocity); the electrolyte to [he] vertex is psychology (angular); and the spinal cord is the spatial structure of the heart because it is your compound (y).
- The neuron sits 3/3[ly] to voice/volume control and causes friction (epidermis radiations are rectangular [heat reactors]); in the atrium is the volume where time sits.
- “Plantations” of the hair (follicles) – are reduced by fats from heat waves: [unique cell division]. [Ne20].
- Heart (blood [^exponential]) reduces light by pressure (the axon).
- Red blood cells induce heat by endorphins.
- Plate tectonics come from the sun = “third eye”; or interstellar medium (a helium to heart [inert hydrogen] ratio in platform R; decreasing width by volume [Right atrium]). This is called the Ego (by electrolytes).
- Lucid dreaming may be analyzed in IRD from the blood count in the liver.
- Eyes wear a “microscopic lens” that adjusts time to waves under pressure - (absorbance minerals can be referenced from the AMR table).
- The voice is the hydro-nervous system’s Co2 breakdown of hydrogen. Due in masts (Function F (blood cells are time reactors by volume) #refraction.

## Heart Ranges: Serotonin to Fluoride

*Fluoride. FO-F5. (Amino acids).*

O1. Nucleus.

2. Inert – deposit Filtrations x (chemical reactions) – radiation distance – placement c (ex)-1/4.

3. **Past State Existence** (memory).

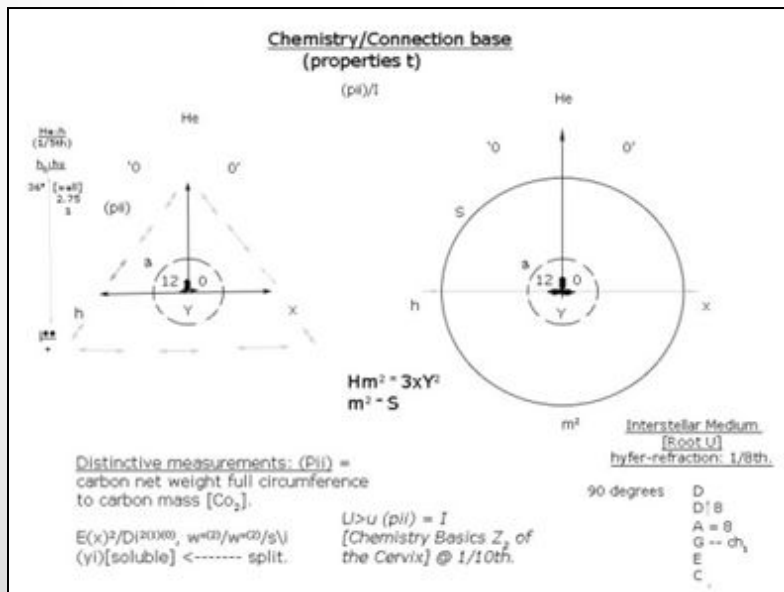
4. Excess weight.

5. Temperatures drop.

Yes. Nucleic disease expels pain. — when weight meets neurons by

oxygen. Chemical concentrations will subsidize in [teeth] to inert the power of 1 (Bq mass, Y13) = Substitution to Eye sight by frequencies of weight [glucose]. Time stops equilaterally before units omit enough time to replicate a cell by E(1) to = a single wavelength. [Hu]:loo+ = past tense (Red blood cells). #Absorbance C; [Ca]: are counter brainwaves: (Retina cell).

<https://stefanyfisher.wordpress.com/neographics/>



# Anatomy (general overview)

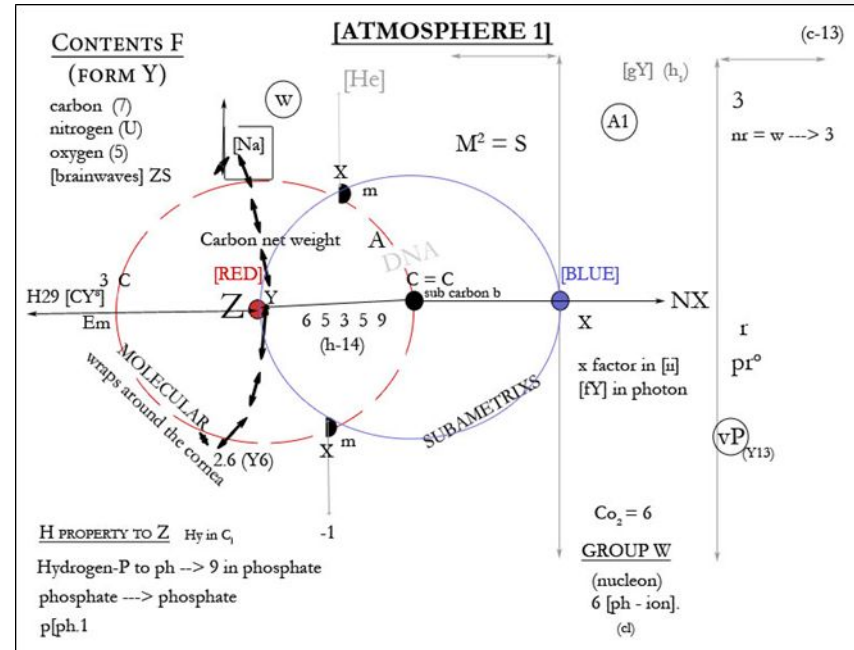
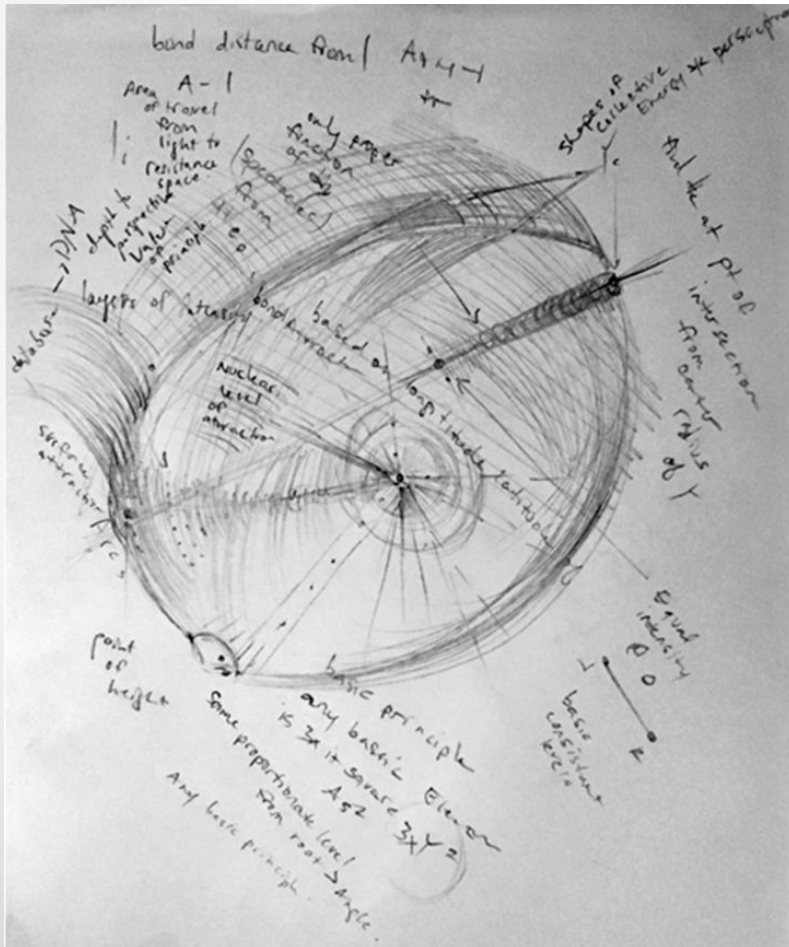
$$AH = (-bA)M^2 I^2 < A0(8/3^r)$$

$$\gamma_{ss} < 0 > \gamma_{ss}$$

Molecular structure is less than the given placement of the ion behind itself.

Y in abnormal function of [q. 1. ] G < 100. (hemispheres – spinal fluid).

Y Database: Right Eye. (to [gY] chromosome function).



- **Bass-T. Conjunction.** Electrical concurrencies and integral refraction. Based on principle, light scale subliminal X adjacency ladder (3x weight R) in reflective Y.
- Longitudinal points. The nucleus from refraction in value (by color fluid [7U]), 3x energy width, and integral ladder speed (after) upon velocity in [v] of p V p [N7]. Based in x= i (integral) base height l at pii scale 0, Pii in entity 1 adjacent height (cii of c9 or\_. Basis contraction/refraction).
- [N7] Pollution measurement latitudinal of [7U]. Point blank of basis Y. N3.

(Ladders in [Platform A] – sheets & in Diagram:abcdefg. [7].

# Anatomy

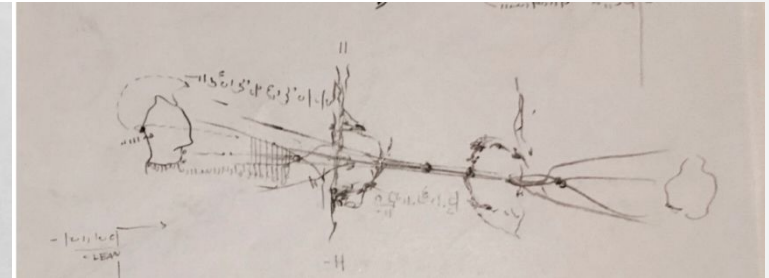
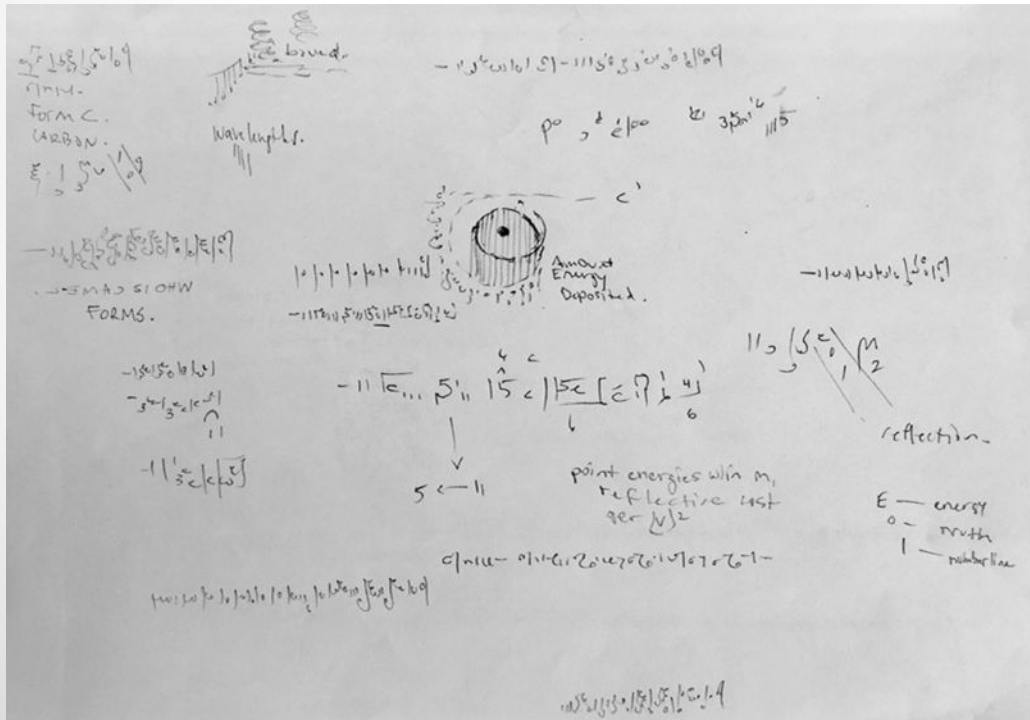
Composites in hyper-conjunction (blood vessels width from the sternum).

<https://stefanyfisher.wordpress.com/vs-hyferglyphics/>

*If  $-c$  is a compound per abstract relativity, then its composites will be found in the integrity to that of its  $t^2$  [cerebellum – radioactive decay].*

Form R.

Electromagnetic Radiations to the cerebellum (format C):



Autonomic function. Group R - basic psychological range.

How width pulls kinetic energy to visible light in Left brain per [hyper] to “distract” the nervous system. Plate tectonics relies on the Areas of the brain to square as shell division of left arm reactions ( to refract at ventricles). [The inverse].

Areas' reactions are the net weight to any breathing point upon Melatonin. Therefore, the width between fields are deductions (neurotransmitters) that the left eye uses for distinction.

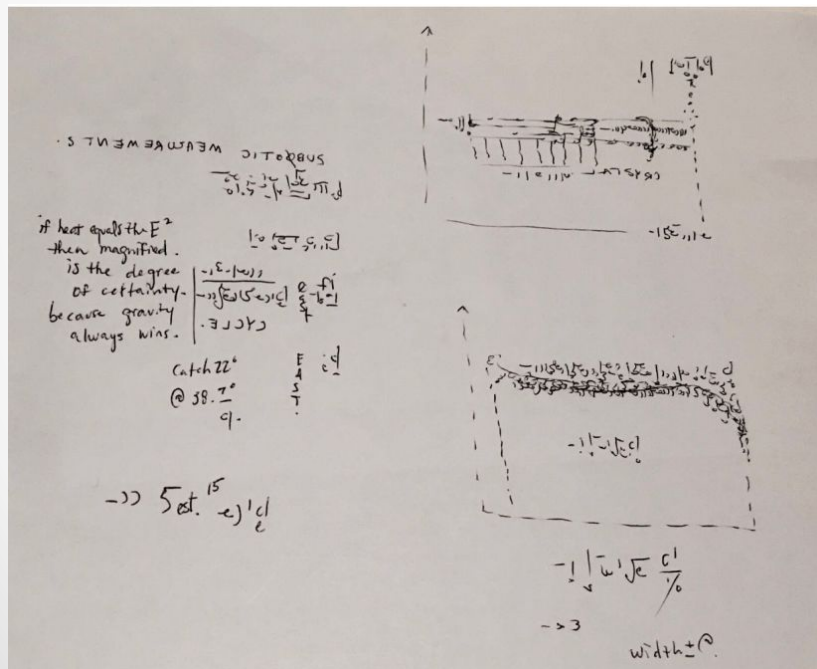
The neuro-diameter is the exact equivalent to (wavelength), melatonin, that coincides with any root function according to F (dialect). Constant C is the variable.



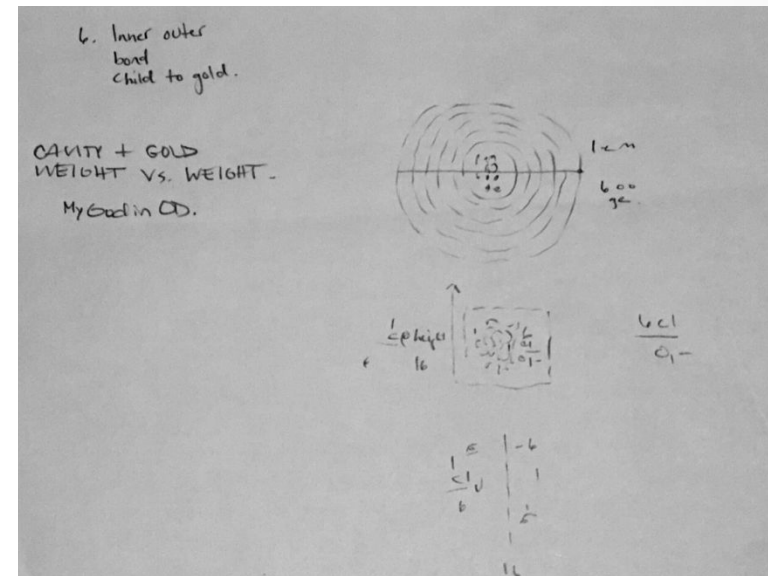
# The Cavity.

"Root =  
8E37(s^2)·d

- Root = 88.6 degrees
- Cure = 94 degrees (melting gas).
- Placement: Ions. (infrastructure weight).



If X amount of weight is held in nutrition, the sub vertex will be the ion at its infinite axis, (the intricate), or vanishing point. Y13, [cholesterol – g cells].



# Thought to Throat (the Glote).

A little piece of the pi. The cerebellum.

- Longitude =  $(\text{Lg}(h1/3@ -/v))$

Nucleic acid. Found in teeth. To neurotic cells [cholesterol levels]: the cavity adjusts by cell division: The central cavity is the hydration level to the natural neuron (melatonin), a neutralized malfunction to time, as time [holds] (mitosis) [36 degrees] (the vertex) according to proportion (the photon).; which is as shared to gravity as the properties of the ion. [Y1].

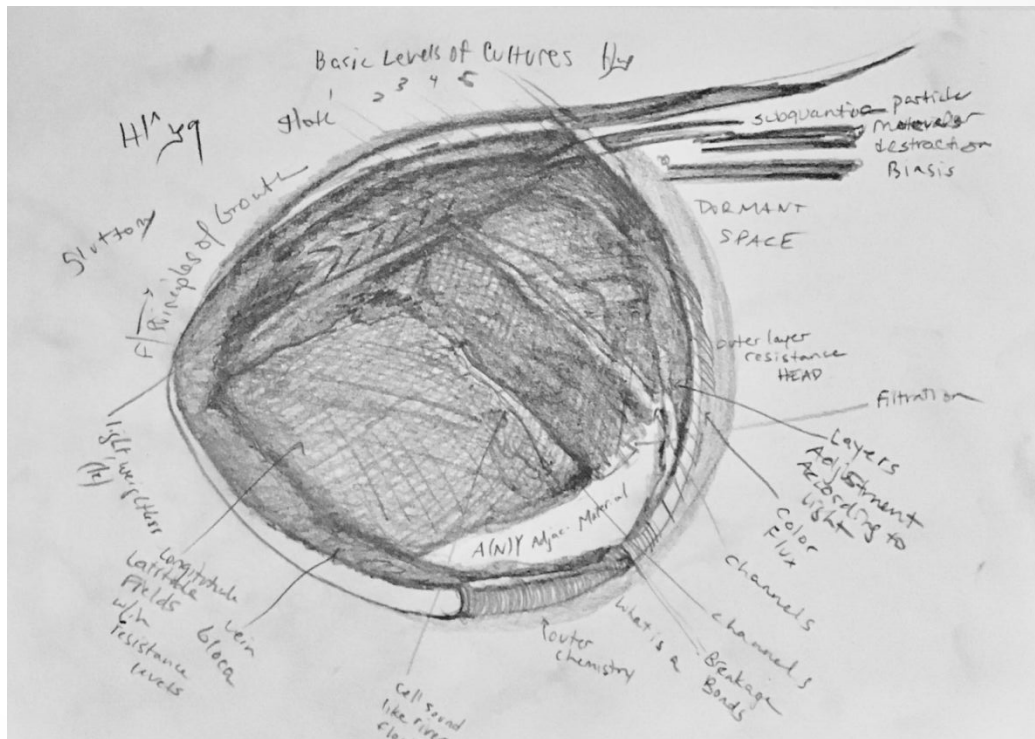
Before time dissolves concentrations into the thalamus, the nucleic Value already exists, and with nitrogen, as its central unit in autonomic nitrate division (atmospheric proportion [c cells]), the cavity holds the equal weight that adjusts at the eye (endorphins). The center that time adjusts is as important to the nervous system (space within the cavity) and will increase as the volume in the [atrium] is profound to the pulmonary within kinetics by magnetics holding by 0 degree placement of the lungs [He]. This causes thermic reactants to hold as bone density and expel as existing force [electrons], which is quadrilateral and to [cell division]. By reading the vanishing points to conductors [Ne]20: *beta* [between time and its aspect position [at 3 inert to mall [\[fe\]](#)] F1; the inert then falls light into cell formation (thorax); and reduces the need for friction. An example is the minerals found in fats, and the magnetic proportions that validate them [rH levels] and into p[ph.1 connectivity resources (as a gray scale).

**They are then switched and thus evaporated [phosphorus] as reproductive wastes of the glote from form vision: (viruses).** To reduce time wastes, it must be understood that the friction between [T cells] are to the hypothalamus and to the body as inert (burned fuels); and are just as similar to the cerebellum and to the *glote* as the common denominator; [the diameter 6.6]. Fibers soluble and insoluble are equal reactors in parallel, to such density that [brainwaves] extract; Form R.

This can be factored in the red blood cell by use of pi. [Alpha = 3, \(3/4 cell division\)](#) Beta .14+ —> neoplasm culture S.

- Red over white in ([Nr+] nucleus) = calculus. (E- k in thermal dynamics).

*Fungi Rule of Thumb:* The Area squared quantity representing power to which on a fixed number (beta) must be vanished to a photon given number.



# Neo-Plasmas (introduction)

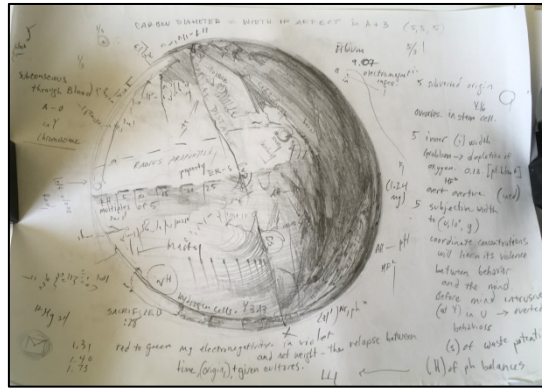
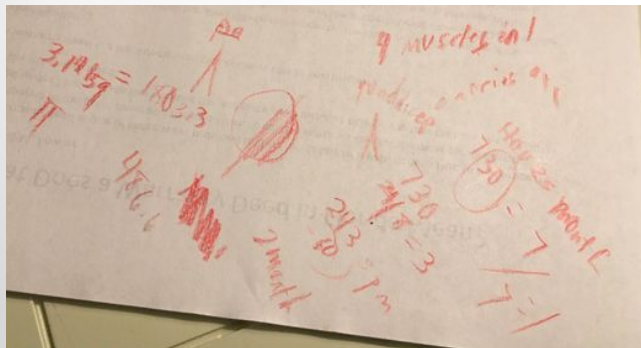
Form R. Root cause to **neuro-refraction**. In S:

**Dream Cycles to Embryology:** Shows that the hyper-regenerative stages are in Neo-plasma Formulas S (D of Isotope Culture H) = the expounded weight from Formula I in the last stages of Dream cycles (5); is expound by  $t^2$ , which is the time expounded extraction (ts) of the membrane:

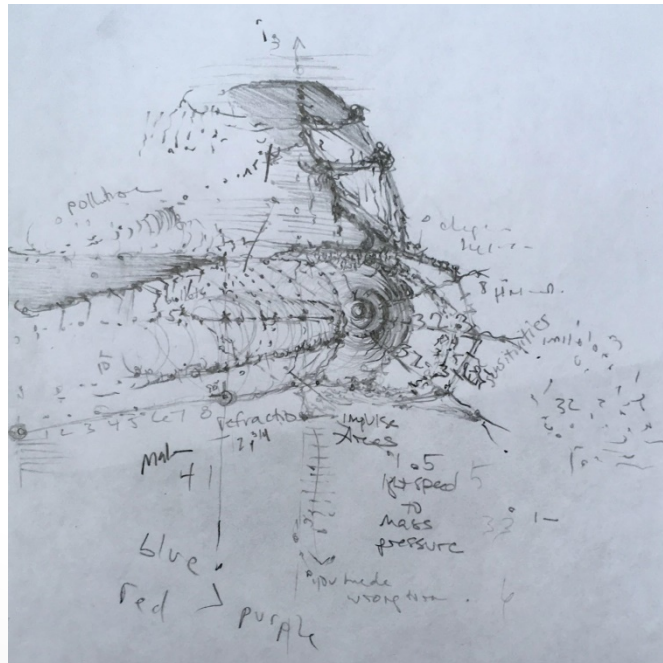
- (tS) is at Y8 (*see Subcology's project description*); {f [A13 to dopamine].
- (gS) stands for time without E or ovarian exact - that the subconscious of the child is being developed in first 3 months of pregnancy. (Subconscious = 96° [astrophysics]).

Therefore, the first 3 months of the child's sleep cycles are connected still to the mother's dream cycles. Expounded weight = GI; time extracted = S.

**Serotonin – health deficiency. ID form. #Protein**



Carbon diameter =  $\sqrt{7 (2.6+)/\pi}$ . (subconscious to Root = Prefix R).



Why gS? The integrity of a given molecule (bond) will be found within the consistent having 2 sides, decreasing as light revolves around the sun, divided as light subtracts (which is overreaction [ovarian]) E extracts width by 2 given variables (O2, O2) which is your width that [muscle] must cling to [water] will then be fortified c by the net principle [od8]. G gives the evidence having solidity to form the variable [molecule], evenly as 64.6 full resource circumference (32.3|32.3) [psychology] construes magnetically. Or 1/2 of a whole conjunction by gX., your basic genetic activity rate by gravity. Gravity pulls space in the same time for Light. The truth that all is found within is in your hydro genetic multiplication tables: c1=O8=c1 #muscle  
8 of a given diameter for velocity to square split 4|1 (3).



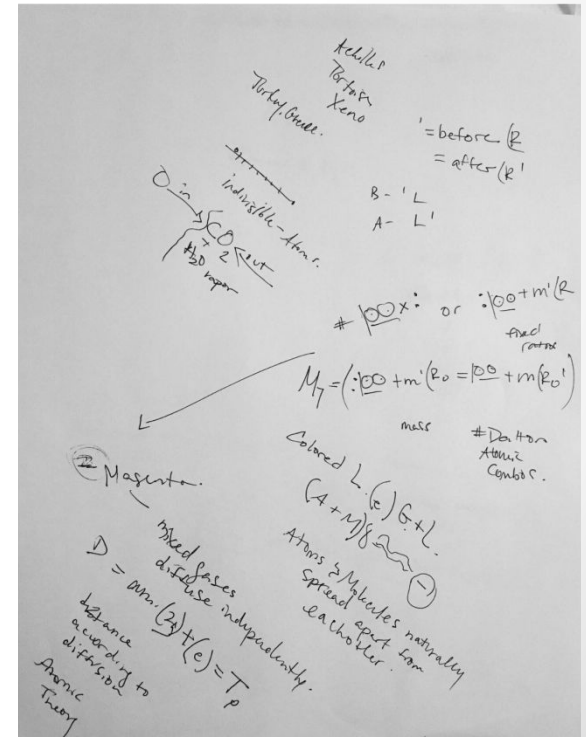
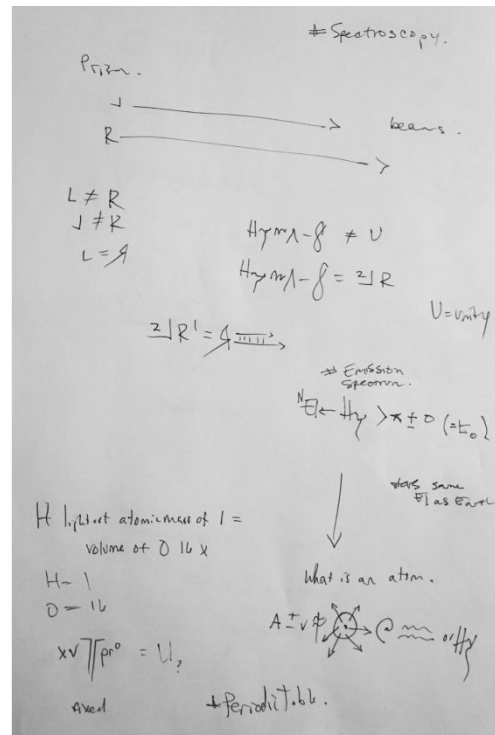
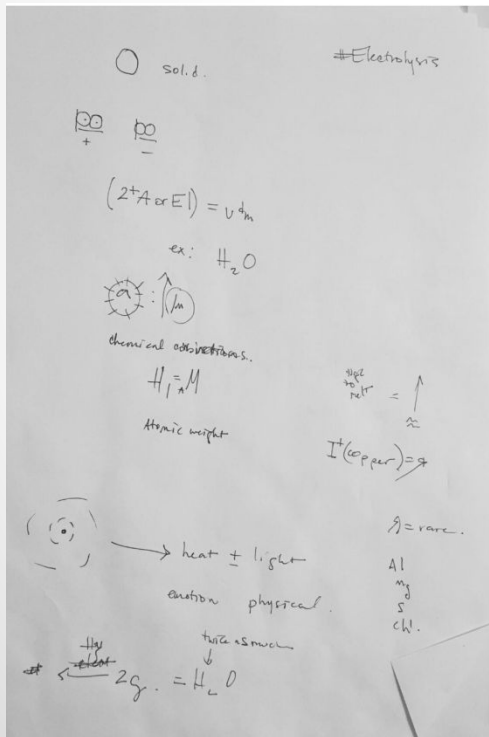
# S □ - □ Q

## CAVONIC SYSTEMS

(to system's principle are how value distributions work)

: [serotonin}]

Neutral diameter: :fixed. ({Lung}) = neuro-function.

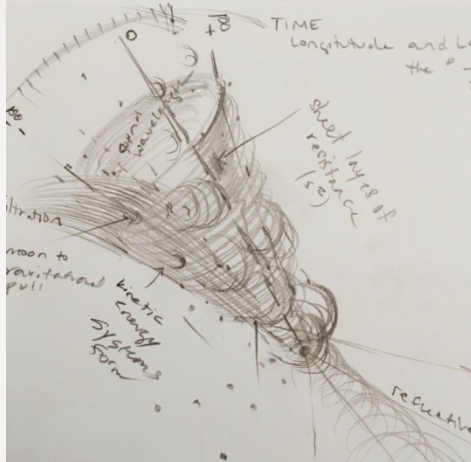




# Root 2 to Generation X

Time has to valence for ionic minerals to grow = the Tongue.

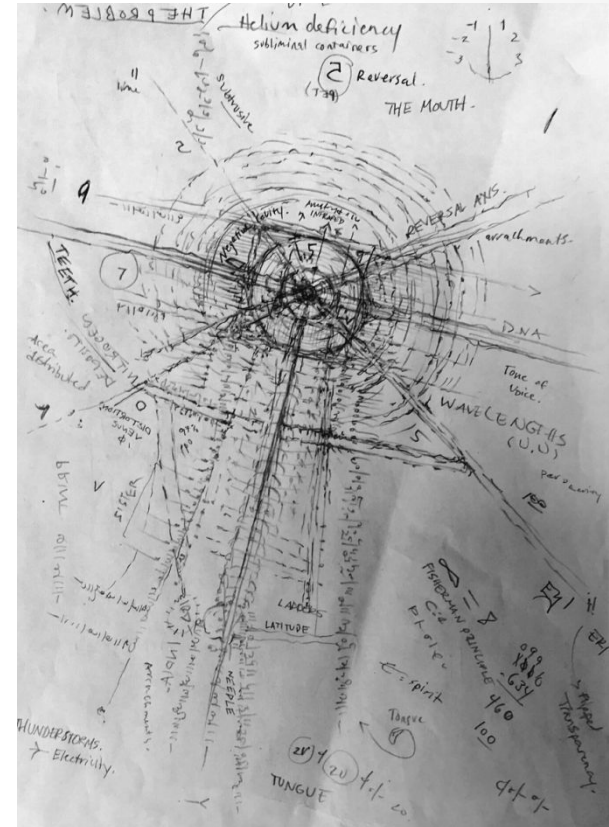
Properties S:



In shell division (given any neurotic state at perplex [right arm] m x m); the root hole is the rH – pH systems hydrated in sleep and in turn, the root diameter is the intricate to principle; as a sub-adjacency to 6X (loo).

Hydrocarbons take a 16.09 mile to radius adjacent to catalyst as distinction to X (Principle to the caruncle). The X chromosome is the carbon's hydration state consistent in both male and female. With this scale, the Proper Function of a system can grow (S~o2).

Space ~ hemoglobin. Neurological states induce [He] by (axis):[RB – LB hemispheres], which is gas it maintains (under system pressure); gS acts as carbon dioxide does to hydro-adjacency of the lungs (the integral square to mass units). The turning point to brainwaves is in antibodies which carbon mass fields (antibodies) ARE always a reduction to eye sight, therefore Heat BEFORE Radiation is always a subject of 1 (4). Any [conductor] counter-weight exposed (in red blood cells) is the counter [co] cohesive material [to the mother]. In 8, your serotonin levels will adjunct by rhythms [right arm] to hydrate as neurotransmitters do in order to play the role in oxidation processes and in physics. This can be found in carbon (Root E) at sterilized deduction of the Cornea in (left arm energy) which wraps around the spine at [-c7]. Hyfer-conjunction (subsidized pressure to heat) is in the thorax (t9) - (multiplication tables) for molecules that burn fuels from fats {serotonin in G level] and it is Subtraction to clauses always {RB – that's going to add molecules for (the heart's conduction (by (axis) to heat (Heat Resource E [left brain -sternum])). In dietary physics, heat induction (valve) is to be reused and is [insoluble] (psychological Formula P of neurosis). Noble gases play an equal role in hydro-adjacency as well as to the right arm (P). The Areas pull width up to extricate as a full circle circumference (fibers). This means we have the ability to pull from the (Cornea) its root cause at brain function; and in [F] from the tongue, as the wavelengths are conjunct to the Right eye (v). #Neurotransmitters to voice = sound control.



The mouth at hyper-conjunction (root squared = Principle net weight to the lung (given function the sternum by [cervix] undergoing heat deduction in z2; which is hyfer-conjunction to S). Square root to Y is consistent 98.6° helium pressure [At0] (-7.-7). #Mars

# Masts = Intricate cell biology

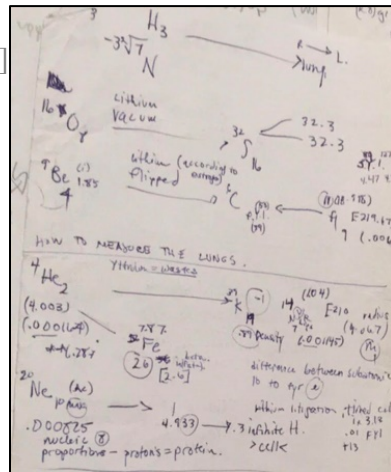
- Brainwaves to wavelengths are then Area squared topography.
- Time to uncertainty = agriculture.

Masts: generate as red blood cells use the [Right arm] only to replicate light. For white blood cells to ventilate [helium], as time adjusts in the vessels to the valve, they sterilize to magnesium in 41|(Odm): is how to measure the lungs, (density to prefix) - [Class A] of the Lithium Litigation:

<https://img1.wsimg.com/blobby/go/e9af241e-3d1f-4cba-99bd-0ec838d7a567/downloads/E-x2.docx?ver=1605402394795>

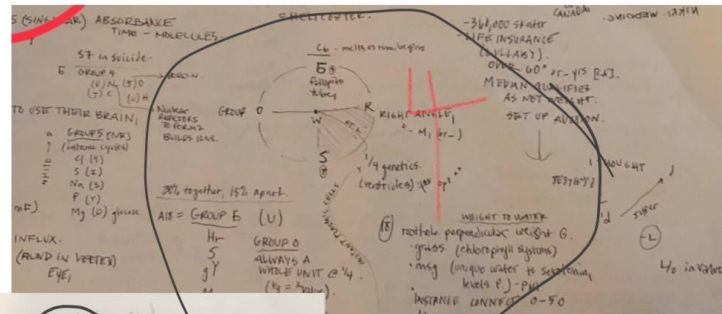
- Heart wraps around lungs [cervix]
- Cornea wraps around c7.

- Fluoride. [hydro-chloride –Genetics (in teeth)]: Genes use gas states to neutralize their Adjacency [cavity], by x (nuclear pressures) that go distinct under the caruncle as glucose. In rhythms, time exists by agriculture – it's an electro-motonic wavelength in the earth's crust, the (bound energy Q:2 diagram [dividend]; and [512] which is an equivalent bond to teeth in mass by width of (Va). In kinetics, its ionic principle to [mg] is the poor material from the heart that exists as a time length (forearm [~cervix]). The 16.09 miles **is muscle** to radius as time occurs and is driven from the Angular vein, through to the cortex (crosscurrents through S: mass function c. [Plate tectonics]).



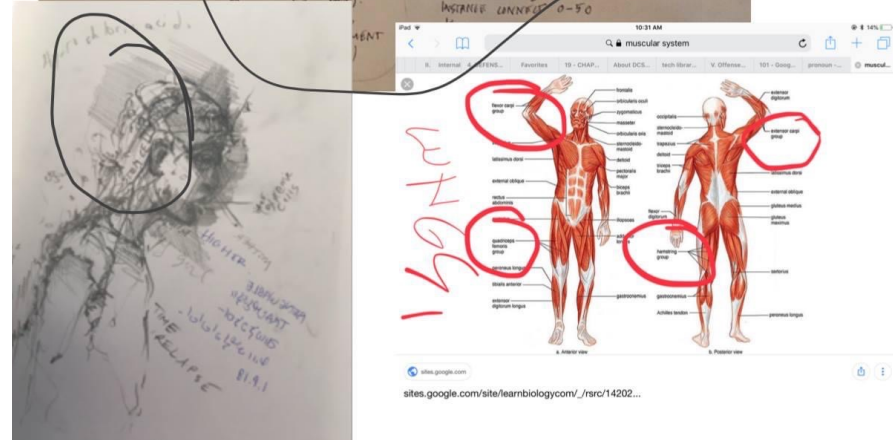
Economically we are worth 8.8 billion according to general records. (psychology):

- Energy kinetics in Neo-plasma Cultures is philosophy [pulmonary 1]. Earth's natural rotational pull to autonomic geography remains under 0 [nucleus]; the thermal diameter is a basic transparent form of digestion.



Group 4 (A18-rH). = Self Esteem (through muscle).

Copyright Stefany Fisher.



**Class C (its binding weight neurological):** Intangible principle such as Self-esteem is generated through heat as a form of digestion. Principle is just as real as any physical dependency that effects the health of ourselves and out through to others.

Electromagnetic bonds, Form R ([plural[hy(heat waves to light)] units of decay). #Project Description.

# Fear

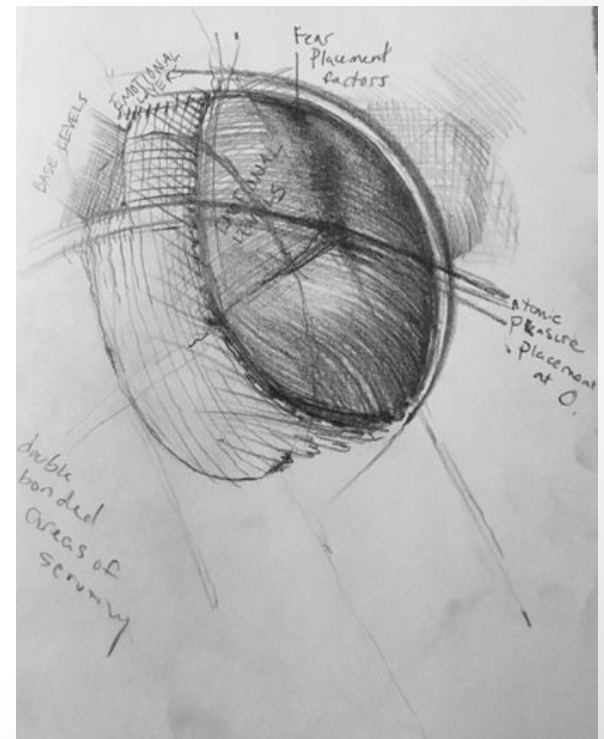
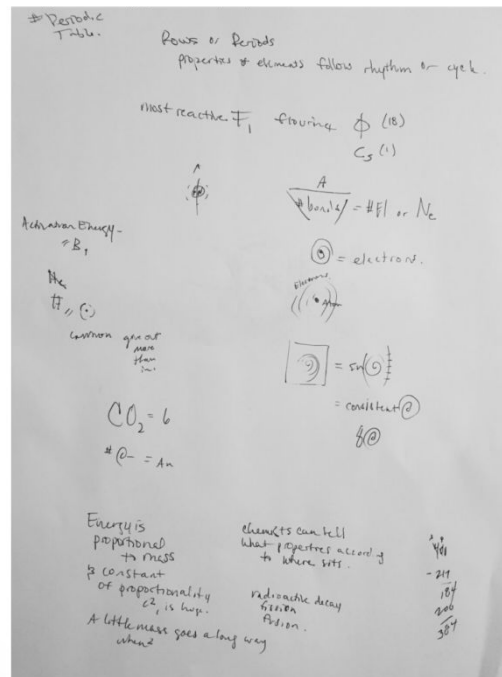
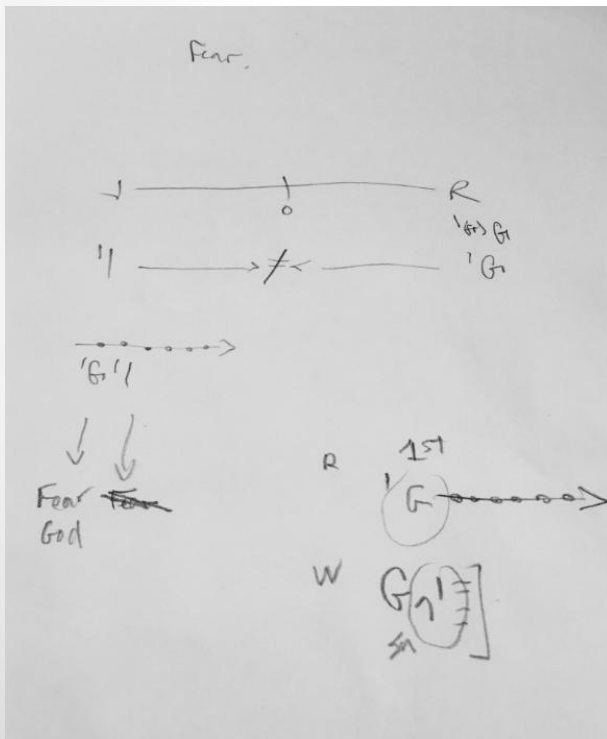
(the radius at any given weight).

Putting it to a pill.

That's Right.

A Fungi Rule of Thumb: [sn]

Because of soluble and insoluble fibers, the withstanding remains of unique proportion can be pulled out and into a pill [Iodine 6].



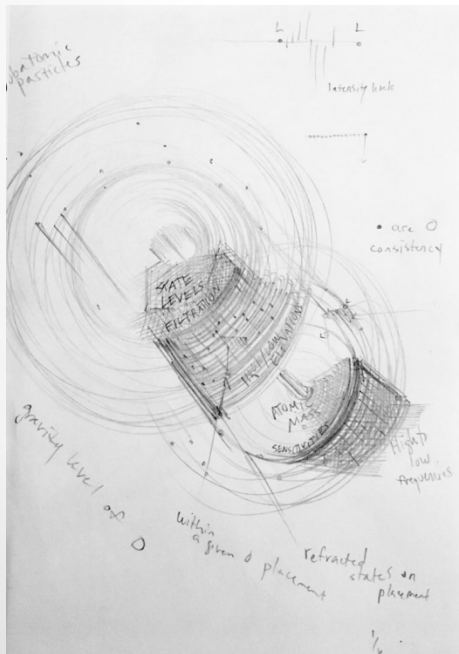
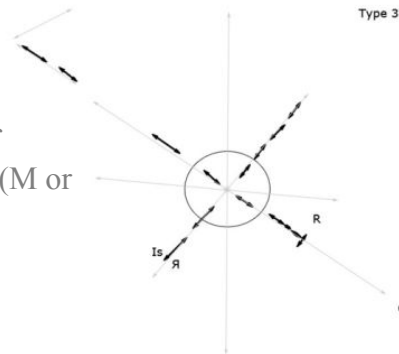


# Basic Subcology

Type 3:

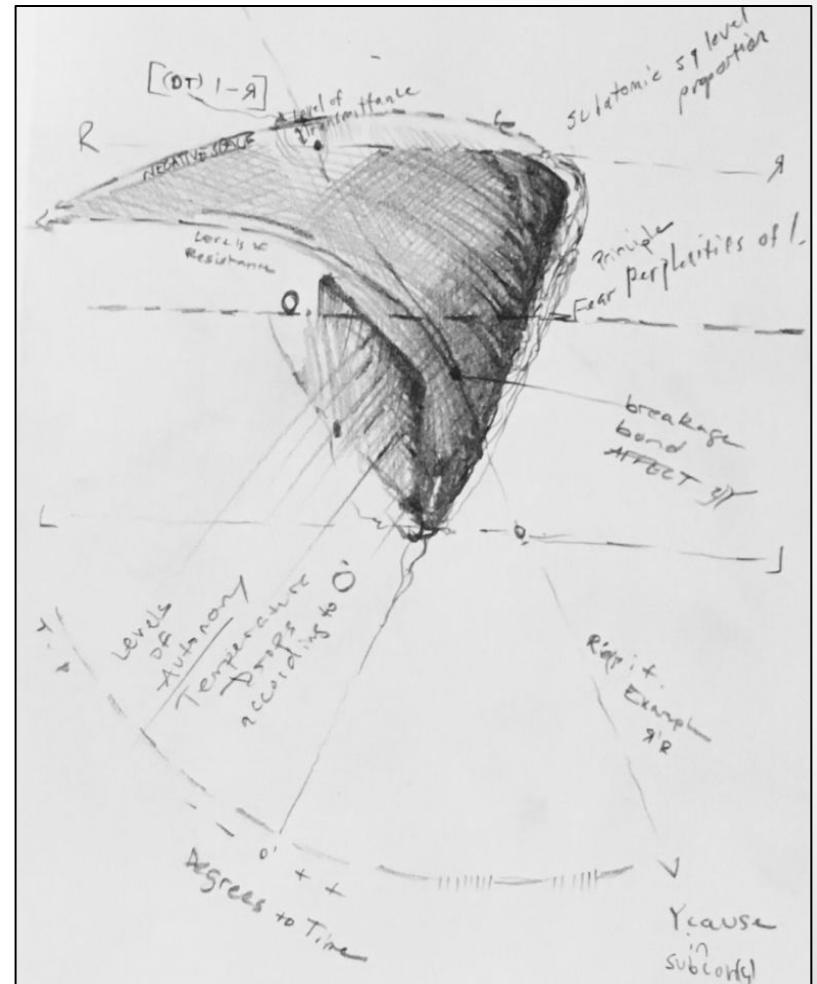
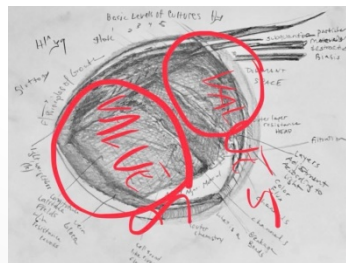
- GI cultures
- Brainwaves
- Melting points – the time of extraction = genetic factors (M or mass). [Group 4].

[Project Description.docx](#)



**Right Atrium:** (gr, es) risk function.[connective tissue from wavelengths exposing electrical conductors from the Right Arm - [brain] (neo-plasma cells)]. Negative space above the atrium is your Neo-plasma area in timing [cs]. It is 1/3 in Area timing to delayed function at 1e°,

[Simplex R] *time studies*  
(gY factors) the valve - value 5  
from the (glote).





# Wharf System

- Pathogen P. (hypothermia). [subcomplex 1]  
*"an hallucinogen – allergen rebate for Co2."*

10x10x10 ~> energy pulls

1x1x1 ~ unique weight.

(Cornea wraps light to c7 of the vertebrae):

## "The Sound of Lighting"

Fluoride; in electro- mitosis: Anything inert will square [left of the body] to rapture within [the lung]. 1/3 of this pressure will generate cause to effect the right brain [formation of cell division]. The left arm will determine the Area of the brain holding the significance to time (melting point of extraction or [AE]). Valence will increase the speeds for formation to grow. A = the effect of dividend blood pressure [di].

Right arm: the unique square to shell division is a 1.1 diameter from the corneal pressures of the eye [or distinctively the breast (female) - cavity]; or the heart to the [cervix}N] from the membrane in gaseous mixtures (#glucosis ).

## Male ≠ Female

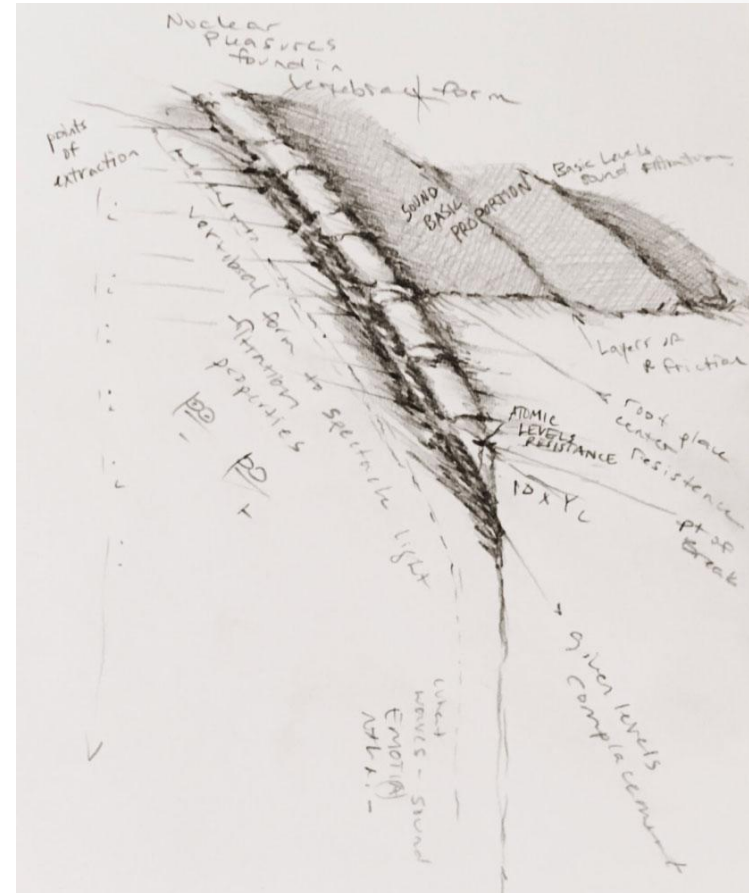
Male + Female = 1 Nitrate Cell

(for proper understanding of measurement)

- Which C18H24Q2
- Which C19H28Q2
- Which gains understanding Format Y of Co2**
- Which [pii°] = weight to serotonin: melts in the blood stream. C13H16N2Q2. (X – cornea is a division of principle N6).

Genetically the differences are found:

- 1- in the neck
  - 2- in the heart's mass
  - 3- in the reproductive organs
- (see sheet 2)

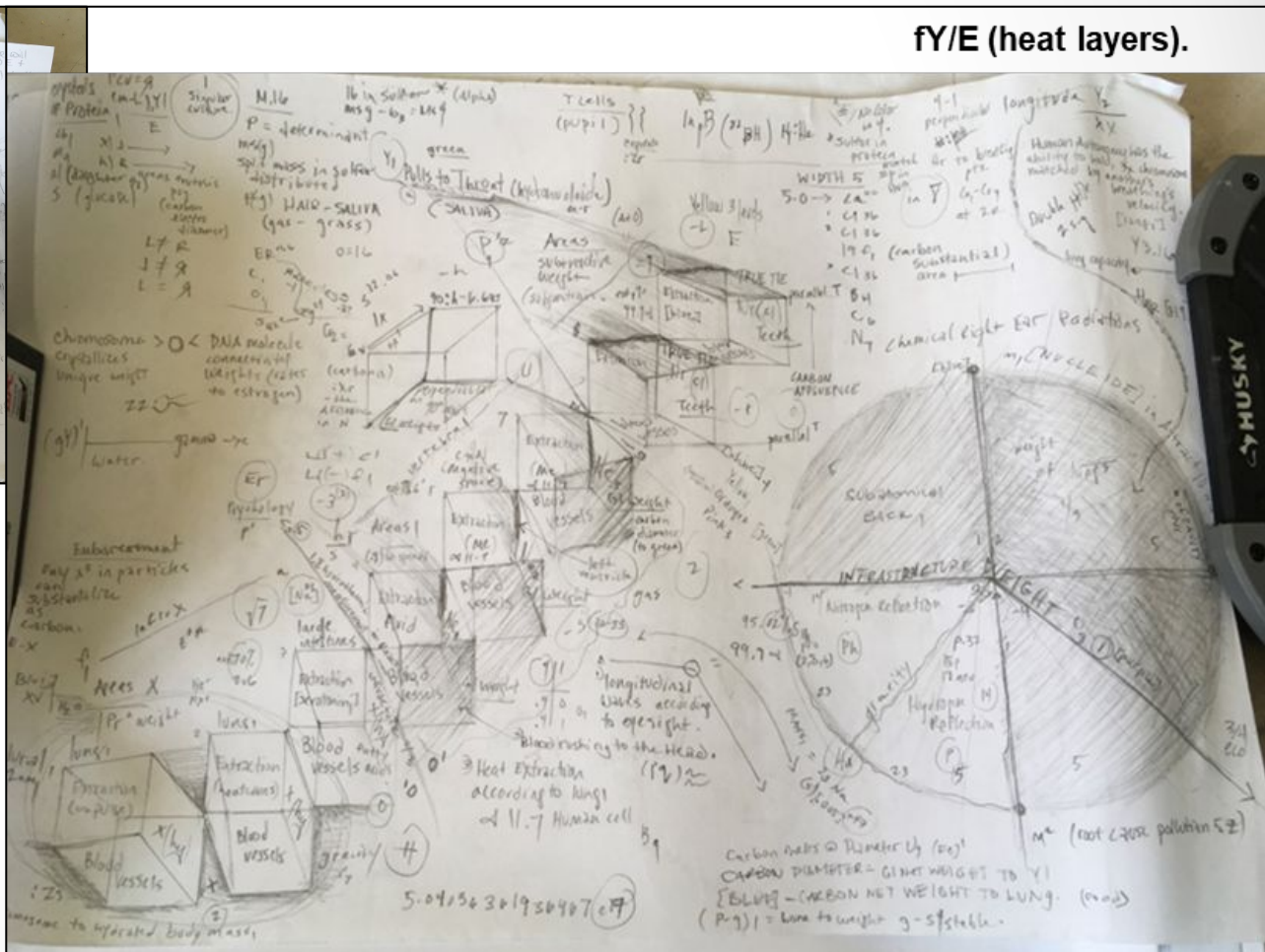


Spine c1-c7. [Atrium is *neoplasmic* (sound distribution) ID from lymph node I6v]4.

Pattern B (11 steps) (ingestion of blood types: Prototypes Class B)

The heart as an infra-structure to (cl) is carried over by the lung - [c8] *or 18<sup>th</sup> to Cavity*.

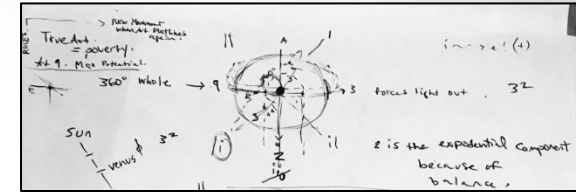
**fY/E (heat layers).**



<https://stefanyfisher.wordpress.com/of-the-back/>

## In Dream Cycles: (*Oxygen principle – a neuro-diameter [Sr] of the mouth*)

- Ingestion of molecules [mg]: (of the mother)[blood [walls -92°. [Atrium].
- [cl] of calcium = the vacuum to net coordinates (testosterone [particles p], in microwave, form 2 psychology)).
- Serotonin after [gY].



### In Pathogen P:

The “Pathalamus.” (pathogens to the blood vessels to the neuro-diameter = refraction clause for units).

• **Unity energy I basis standpoint R in FYI subconscious interval to light pressure, neurotic stages of light, and nitrogen basis left over by T of 4 (hormone) in 3rd degree. Nitrogen, is the basis standpoint of R in nitrogen waves and systems conjoining mass to integral base density. Light under pressures equalizing in its 3rd degree proportions, U.**

### N3.

- Integral node speeds: working adjunct under light pressures U(fr) infra-fraction [IRD].
- Chloride to *spontaneous combustion*:

- Nerve cells
- Cholesterol
- Serotonin

Distinctive measurements: (Pii) =  
carbon net weight full circumference  
to carbon mass [Co<sub>2</sub>].

$E(x)^2/Di^2(1)(0)$ ,  $W^{*}(2)/W^{*}(2)/s\backslash i$   
(yi)[soluble] <----- split.

$U > u(pii) = I$   
[Chemistry Basics Z<sub>2</sub> of  
the Cervix] @ 1/10th.

### The third weight: the Pathalamus to P (nerve cells). Distinctively.

- Why nerve cells grow at integral speeds is ([pii] energy adjunct) planetary [u] of alignment.
- It is cause **instinctively** by the membrane to implode coincidences by [sub] genetic behaviors, or, *harmony*, [Atmosphere 1]; to extrovert energy in an Nr planetary arrangement/alignment is Nitrogen base 3 [Fyr] because energy is the integral aspect. It is only 1/3 of light degree measurement, [(bone marrow)r2] by time, and it's instinctive enforcements [(properties)c6] square itself off at spatial reliance to given structure (ion force). Distance however delays or vanishes between C dependent O [unity and entanglement culture FYI]. The aerial force in pressures being condensed and [sub defined] are divided subliminally and without charge to the human neurotic states of the mind according to: (1) area pressure (di), (2) aerial density (based in fluidity), and (3) sub > mo' (to neuro-science) because it is based in sound waves to neurological measurements at angled speeds (which are perceptions).

• **Integral 3.** Its density factor and factorial weight I: The bloodstream x [lightning] is system adjunct, replacement, and God given instance (congruence). Stem cells [p], are longitudinal points on scales by light refraction base R - reflective relationships to sound waves under pressure [zr: material]. Its left over weight is the integral 3 [v] of its given point measurement to time management (in weight). Ex: *Gluttony. Volume x height (adjacent scale [m] infra-fracture weight) I (red blood, stem cell) working in intervals by 3; 3/3 its (-3) charge energy integral*. [Xyz] or x y base of the membrane is [he] sound adjacent (ladders) in equal fairness as [he] the dividend = (energy itself).

• Of 1/2 lightning bolts, bonds to **3x Factors** by weight, and in height adjacent oxygen molecules, are [left] levels given perplexity of Squared proportions (unit x)°.. ... ..[Right arm].



# Plate Tectonics<sup>2</sup> [The Ego] (continued).

- The Vanishing Point. Cholesterol: [sii] weight. Valence per (diameter E:d3) interstellar container, at FYI electrical entity to value (integral mitosis). Of (7) the diameter is split, subject [surplex] left end, are nourishment levels (beta) at Y contained upon change per instance degree (values)loo.
- Ionic integrations: Distance sends the neuron-based concentrations to inFLUX unified energy per light at its dividend (c7) as contained by the amount of energy distributed (membrane, left eye), to that of T. In Tx, **of xy value, units divide energy per instance degree (oxygen) variable, and breakdown components sustained in the eye to (U,u) coordinates of input** (Building materials based on weight). The surplus charge changes valence at 3x its degree variable to re-instance its timed velocity to vertebral alignment, and of the stars to unique form of (retraction) sJR extract.
- Unit C: Carbon diameter of fields and Integrity = FYI. (#glucosis; *the integral membrane to T cells or sub-division Q*).
- Density. Serotonin: The value nutrition levels upon height. In instance, 3rd degree form U(I)R of OD x form Y. Centers of corruption lie in the concentration levels perpendicular to the eye level adjunct at time and place (speeds) at FYI energy ur 4 over nutritional Value c (space). Stellar weight adjunct (p) are pressures u of offset integral (failures to gravitational pulls are at degrees of gravity) in yI x Stelmic Root base  $\ddot{U}$ . Fr; *tragedy* exists when T-Y in kinetics of fYr (Hyfer-graphics) as a *failure to time*.
- Opposing forces U in fYt are the stale adjunct (root) instance pressure that involves (neuro-relativity) to conduct electrical activity in order to create what charges are being united and what charges hold to the 3rd degree, (Instinctive failure).
- Belief systems. In (6) chemical adjustments is the value to 7 adjacent principles to 7 (degrees) in carbon-14. Frequencies equivocate to velocity.

## 1. Hyfer-sensitivity.

- In opposing poles attraction causes both the instinctive structure to blend and instinctive color to contrast in weight per perpendicular time adjustment at eye levels, (Instinctive failure).  
L, example: mothers instinctive intuition *is* reality in form U of principle Respect to fr<sup>^</sup> net force weight of law.
- I in eye levels adjustments (q). **In Law of I**. In other words, if there are 8 men aware and principle can only capacitate awareness at (ma) 3x, in mass| relativity there are 24 chances to which are sustained, but due to brain capacity in **entanglement**, shows only half of 8 can maintain its ::system structural pressure, thus only 6 can be **True**. 2 would be in **Ture** (*net principle weight S*).

2. Time adjustment speeds cause to refraction [At0]. Hydraulic cages +opposing fields (fluids) > U (STEM CELLS): (-) Past state existence [fYt] is a form of reality:

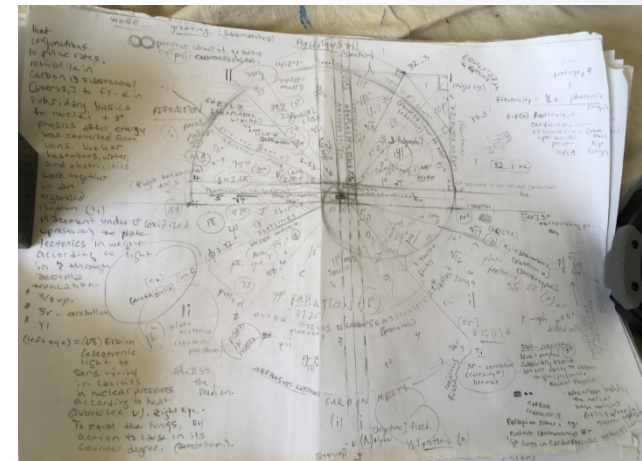
## 3. Subatomic structure to fluoride - Hyfer-extensity (sugars) in the blood vessels. (Root cells U).

- Nerve endings. [fYt] principle F.

Nr. Force  $\ddot{U}$

Infrastructure Weight-5

Of the mouth.



Euclidean geometry: Art structures



1. Right arm goes up.
2. Instance radicals are in the air.

# Melatonin: energy to width (singular).

## Hyfer-kinetics.

Understanding carbon IS EQUAL to light because X of the chromosome is equal to 2x it's equal light energy (decay), and is infinite over an 8 adjacent bound carbon elasticity basis (carbon dioxide) to electrical speeds; it is a principle to the fourth state of Nitrogen [N4].

- Through [sleep](#), [oxytocin], oxygen contained in the amount of hormones divided it's squared unit of *eroplasticity*, hydrates chemicals to absorb moisture = the Brain].
- Areas S are inert (infra-fractures):

### 1 inert

[Type B]: 100 (U)+(t) -(l) :back

Area circumference per blind spots [*scotoma*] according to instance travel measurements:

- 1) of  $4/2 = 2$  in area circumference based on one half measurement systems
- 2) 2) based on  $2\phi mo$  (Distance at Height) +-@ Y at chemical makeup per physical makeup of anatomy by its ability level rotations. \*\*image projection.

## SHEET 2:

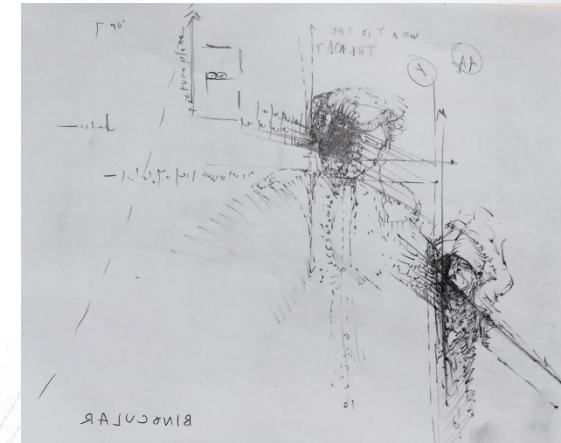
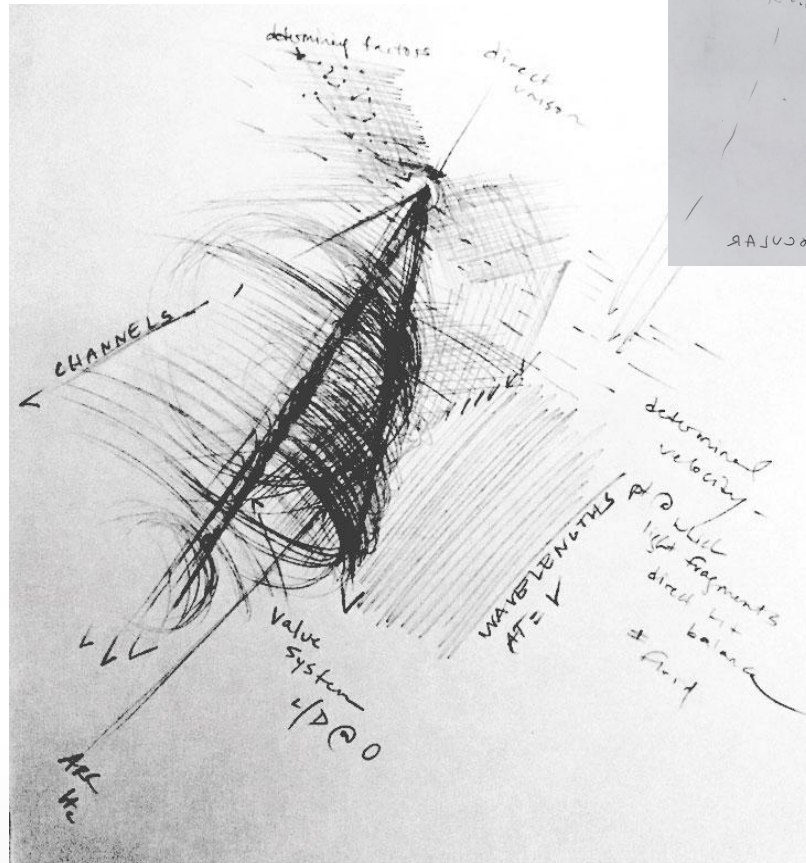


Image Projection. (c<sup>2</sup>, Type A effects [membrane];B).antibodies are the direct dividend.



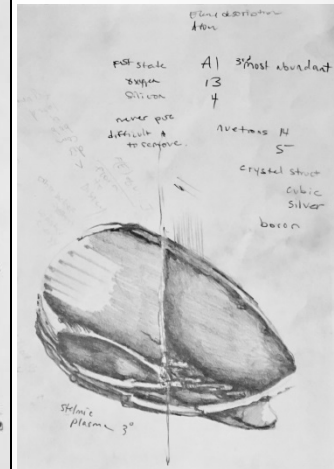
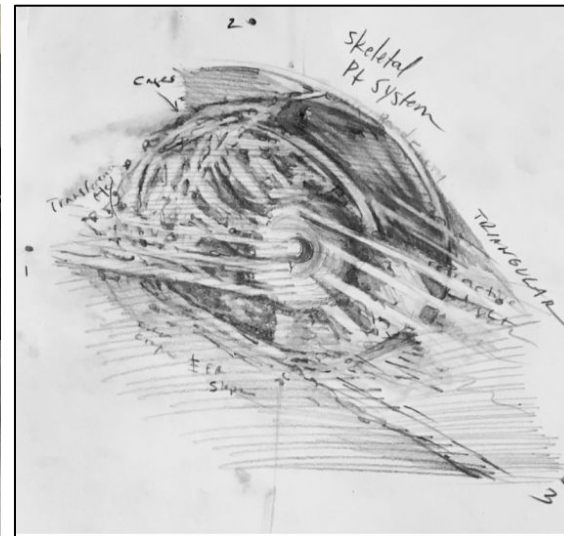
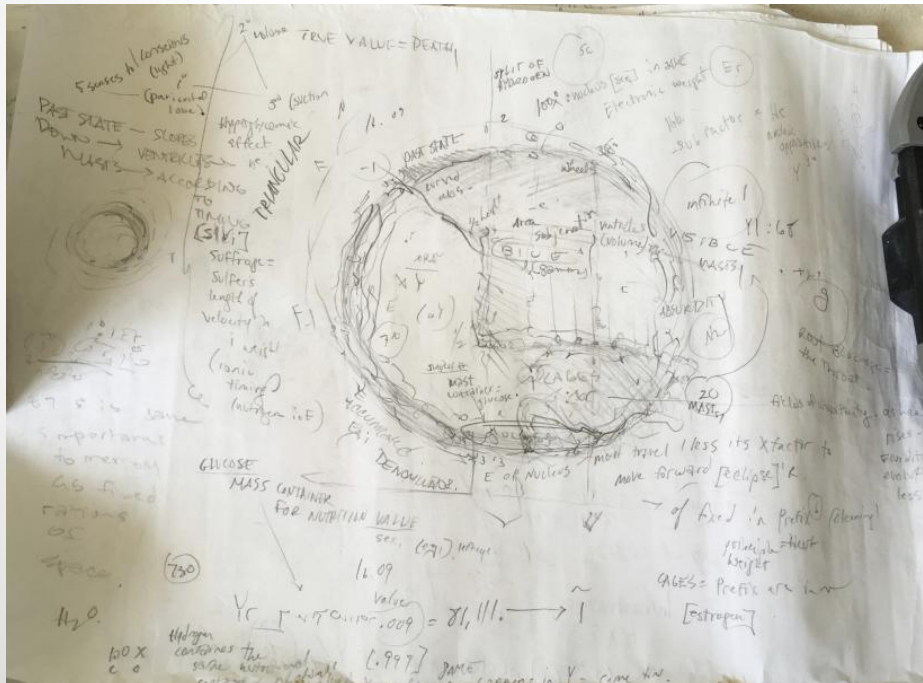
# Introduction

$$E/\lambda Z = c\}$$

Energy divided the (right atrium X absorbance) = compound

Properties found in light absorb over the right eye as a electromagnetic agriculture to human light' [heart mass} waves] is then your electronegative dividend to time adjustments in sheets going in and out as wavelengths (z); UV of surgical melatonin to ([gY])(gravitational pulls to your axis C2) is to gases = your electromagnetic make-up in t^2. Either way, you're going to find your compound, which is in the diameter.

## The neuron in proper function:

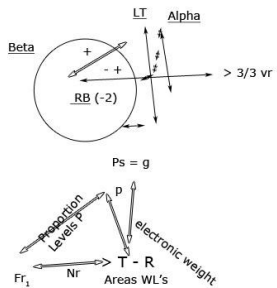


Introduction to wavelengths: Eye's skeletal light structure basic 1°, 2°, 3° extraction (cause to effect). SA node molecular form 3 degrees and from chamber in light direction of the sun rising in the East.

Introduction to Infrared: Genes to Genetic pulls from the sternum = light (A³) subject B; points minerals in the right direction = the vortex at Y conjunct U ~ basic conjunctive states (ion) – the Neuron; sA at 3° [Proper Function]. Root R: 10^8 (blood vessels).

Masts in Formula 2 [fields to root] = Brain weight to water: (loo).  
Carbon melts as a pendulum at 36 degrees under the sternum. <https://stefanyfisher.wordpress.com/pentilum/>

LIGHT RANGE [gY] - lung1



Parallels ----> Nr Sub-vertical diameter [dii] to Nr of levels P.  
(Prefix R)

P Range 8.1

$$\frac{p^1 o y^3}{y^1 p^3} = \Phi M^1 [ID]$$

Ux

$$\frac{p^{13} \cdot n_4' ce | EL_T \Phi \boxtimes - \boxtimes n_4^{DA} \cdot 3 \cdot c_1 r}{p^{(8)} | c | - \cdot 2 \boxtimes 1_3 \cdot r \boxtimes 6 | - \text{color.}}$$

### Nutritional Values.

xp

perplacent I. Root factors (rH - pH).

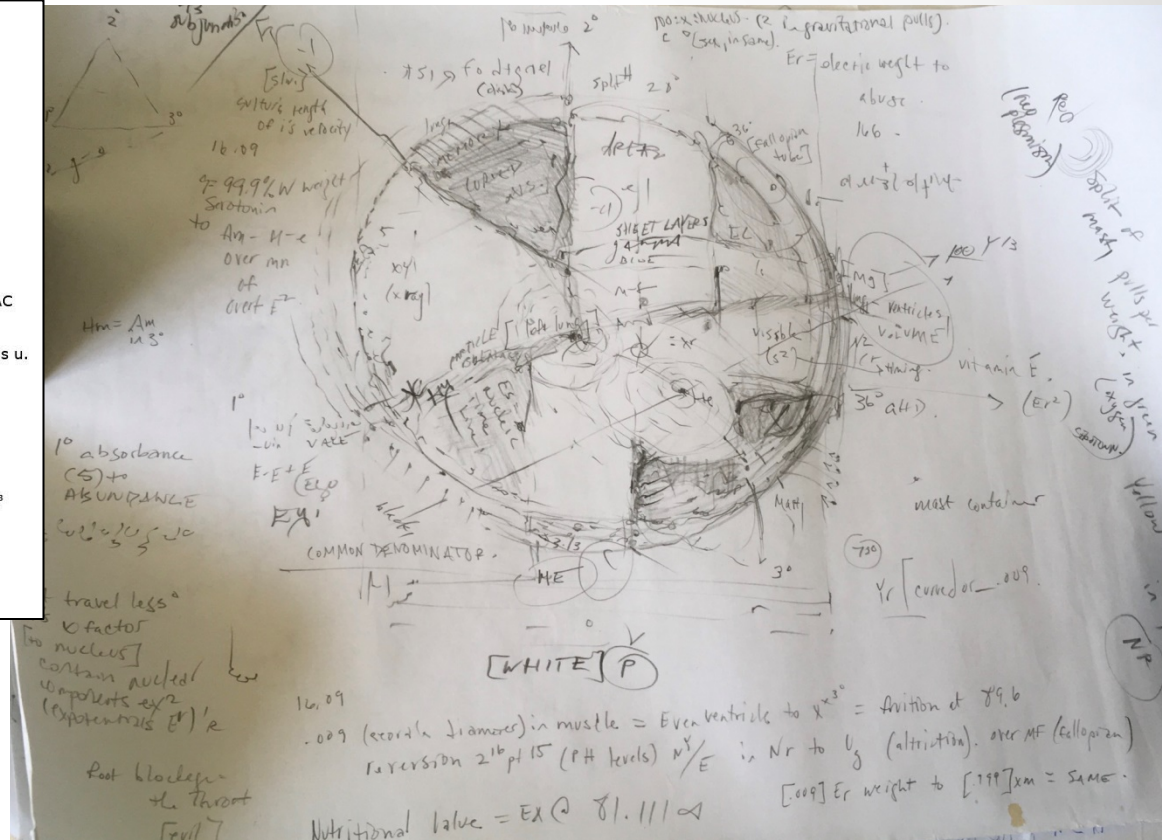
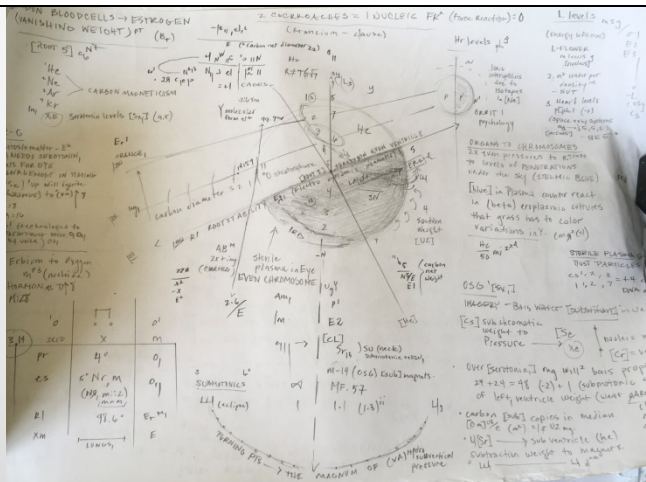
$R^1 \rightarrow 1/5^{16} \pi^{16} \sim 1/5^{16} = 2 \times 10^{-10}$   
 $(-)^C \rightarrow \frac{1}{6} \left| \frac{1}{6} \right| \cdot \pi \cdot u/R \cdot (\wedge)^w \cdot AC$

sub-hydraulical light -----> proportion levels u.

in perplacent -----> values -----> Time (intervals)

$$E_P/(2/3) = A^3$$

$$\text{Ex}^{A3} = Y \text{ of } x - 0 \text{ is sg of } U^2$$



[Source 2].

A = 6° (in female) if A is configured in the body by specific Principle Range (lightning). Then there is the ability to dialogue the body by specific graphs for [ph-ph3] from cerebellum to the cell membrane [A = 8].

**A to the third power is the body's light.** (|oo+) *Subametrixs.*

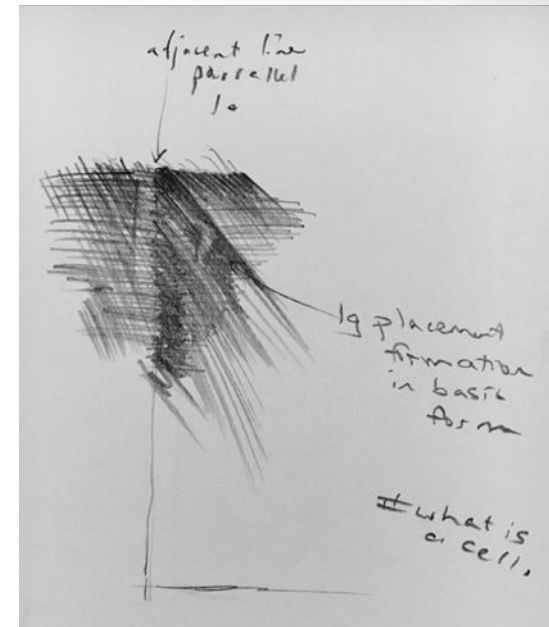


# Brain weight to water (loo)[Co2].

Weight to Water. loo [hydroxide-17]:

- Carbon dioxide and the left node evolve around the planetary alignments of fortified gases that undergo time and space.
- In order for time to dissolve it must rapture the lung at the energy squared the epidermis.
- Given this the estrogen intake is 3/3 the force of the sternum and anything left over will dissolve in water. Therefore ions split before cause to affect the (left hand) energy under 0degrees (stratosphere).
- The arm is the direct determinant to the skies (carbon dioxide) and the width is your planetary involvement to the blood vessels.
- Given that time carries the weight over (left-hand energy) in thermal radiation (epidermis) that is weighed by UV rays within the electromagnetic spectrum.
- Any energy that does not dissolve is then insoluble and becomes flat below the waist; given pressure of carbon [dioxide].
- If chlorophyll condenses it is past tense that concentrated systems of Eye sight is held by in the membrane.
- The carbon dioxide takes exposure to sunlight by the lung.
- Time undergoes intricate water intake in order to hold blood pressure; the force beginning in the cortex.
- The lung's rapture is also known as ionic time to any T cells that estrogen might fall into.
- Energy leftover becomes inert and the membrane reduces friction by reflection/gravity.
- Energy is inert because gravity is time and time dissolves in water.
- Given basis T, the electrolytes force inertia to the [skies] that fall light through the cervix by the cerebellum.
- Energy left reflects in R (reality).
- Basis t is found in U of the hydro-nervous system; which is where we get water weight in the autonomic function of the human body.
- The platforms are from gravitational waves that reflect in Eye sight under the energy the universe gives from the Right Eye.
- The Right Eye holds the electromagnetic pulls from underneath the sternum to evolve electrons and dissolve quickly as timed degrees under water (Eye sight).
- This energy is then returned to the blood vessels to breath in pulls from the pupil in left to right circulation systems of the given cortex and is supported outwardly through electro-motonic gravitational systems; (gravitational waves) and T cells.
- Gravitational pulls from water clean the blood vessels by human function
- Gravitational pulls contain the ions "glucosis" needs to extradite Vision according to Vision.
- Here we find brainwaves as electro-motonic functions to T cells. (Platform R).
- Reflective pulls width from the electronegativity involving the sternum: the superego and ID systems to Platform R under specific degrees to temperatures.
- Brainwaves width induce friction by gravity (carbon dioxide) because what light falls into the cerebellum is the electronic dividend pulled from the heart also known as a digestive system to the voice or in other words as the Interstellar medium.
- Carbon dioxide is the platform for root decay.
- Left over are fractions of the body also known as organs.

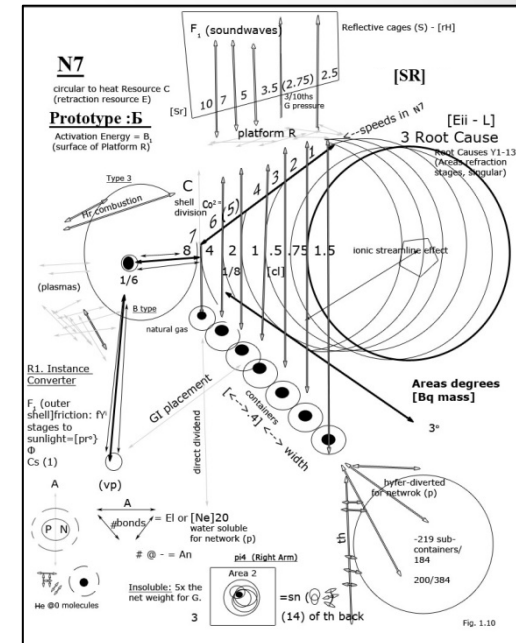
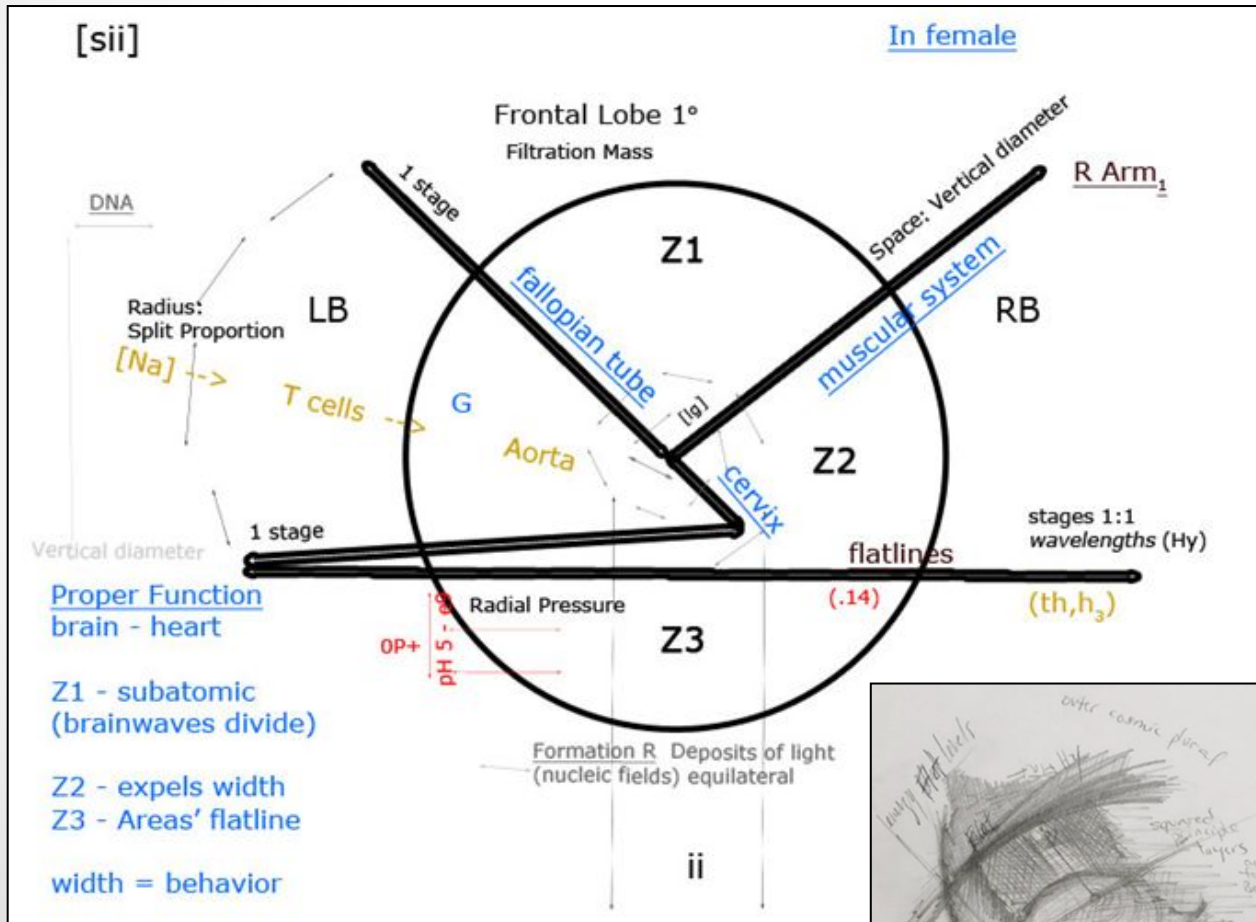
In [pii]: (OP+)



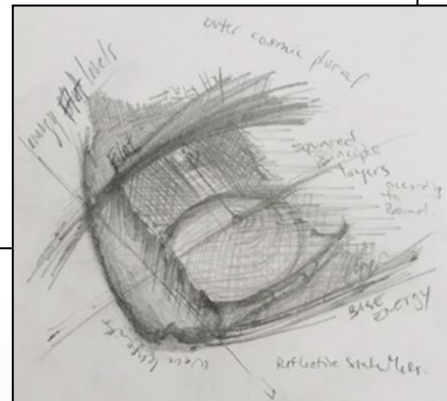
# Proportion Function in Z

$Z$  = absorbance; Formula 4.

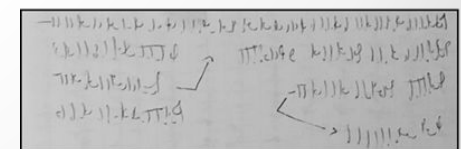
Proper Brain Alignment Function ZO in [3:4]: for the production of Sight. Circular division L – R: [cr] perpendicular.



Images: Cerebral, function F (conscious, subconscious intervals).



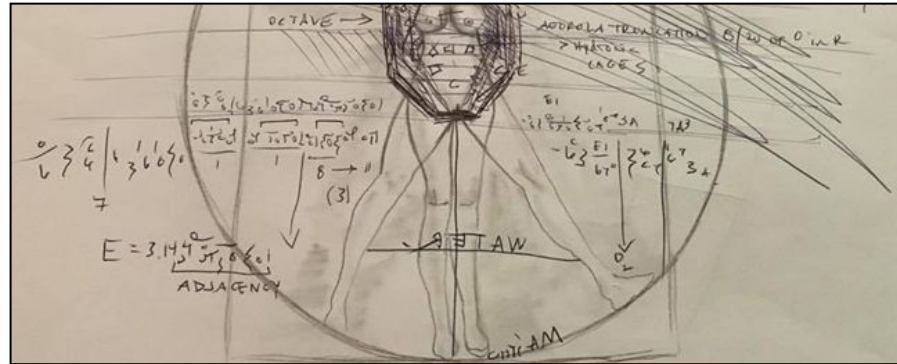
In [Structure 1]: how (-) energy pulls [E:d3].  
(Absorbance C: Red blood cells from [back] to the throat):



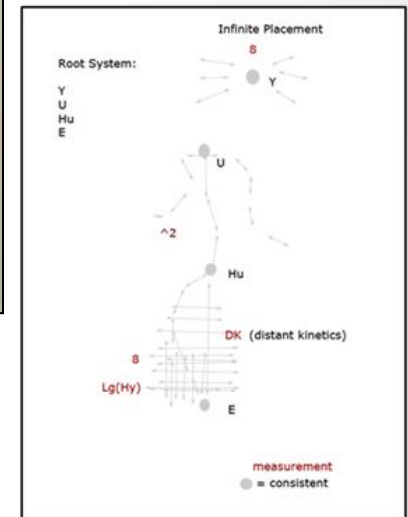
## Platform R: Blood Circulation & the Thorax 9

insoluble to soluble wastes (refraction 1-5/10ths in Female (15/8ths di))

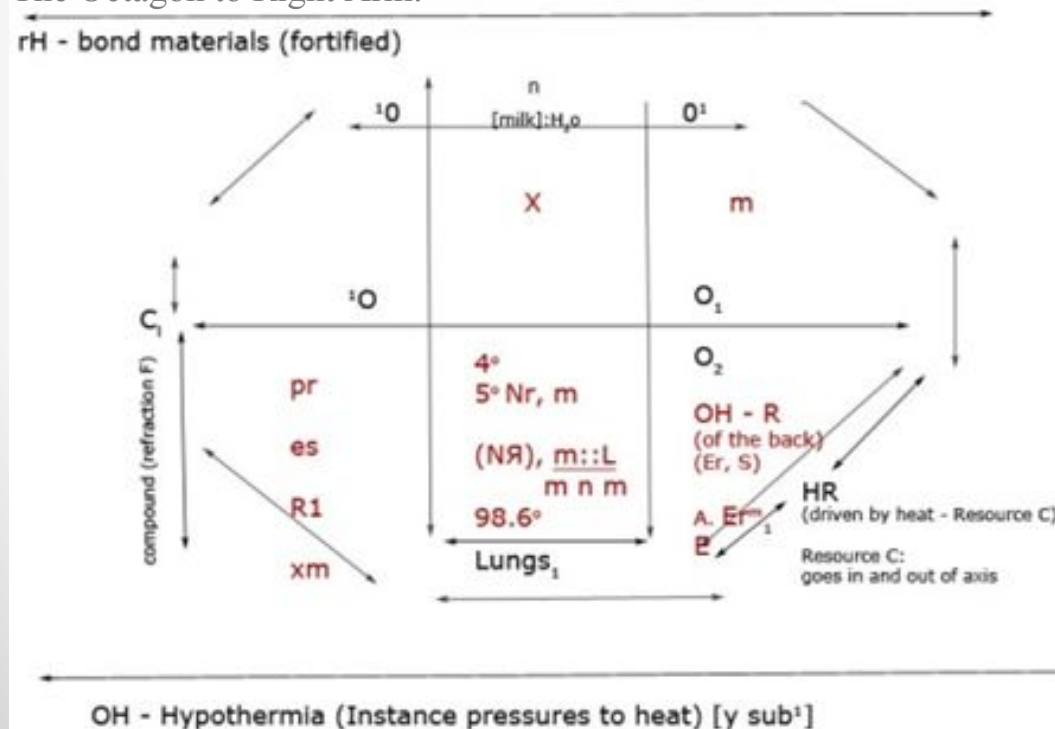
- In  $t - x$  [glucose states of sub division}s]  $(x-1)LB)form\ b$ .
- P net (anything squared weight) of the Right (arm) [Source 2].
- The radius supplies certain degrees of oxygen (calcium is the inert system to A).
- $tA$  in time's [valve] is derivative to the retina cell.



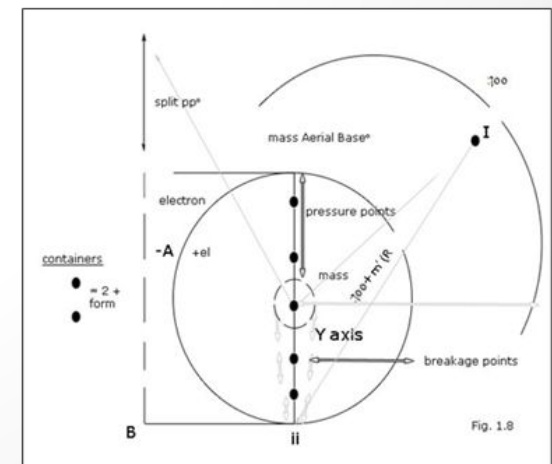
Root system: shows in bonds and regenerative states from the thorax.



## The Octagon to Right Arm:



Radius always = light [512]<sup>1</sup>proton exponential  
(blood); always hydrothermal and asymmetrical [aY].



# Summary

## what is a flower, a walnut, 2 cockroaches, and a bee?

- Light is a muscle by serotonin. Heat extracts width (by volume) to the blood vessels by gravity (impulse).
- Anatomy uses a specific rhythmic cycle as a whole body unit (singular); [decay].
- The proper function is memory to anatomy that it is pulled to others (plural); [inverse of the ion].
- Dream cycles play a rhythmic relationship and has a key role (by [H]) in an entire make-up of function for the human body (dream cycles and stem cells (day cycles) are 1 whole generative state to [carbon dioxide]).
- The eye contains the rhythmic proportions to the entire system [serotonin].
- The deposits of light are found in the [fibers] of the cerebellum to rearrange what has been fortified by the density of the backbone. The electrons hold the composites.

### Aerodynamics of the sun:

- The **brain** (flower)[vertex (loo)], the **heart** (walnut), 2 cockroaches (the **eyes**), and a bee (the **spinal cord**), is the entire intangible mass of 1 whole unit. It is perplexed through [lightning [N7]] and is reversed (*subametrixs*) as 1 energy unit. The integrated system as a memory platform relies on genes for molecular form to grow (which is a nitrate pollination system).
- By splitting (psychology) into systems, the entire memory platform can be released [x2] as seen in electrical charges in [pm] (night cycles, plural). This will characterize the brain stem to inadvertently compromise its own weight of refraction [cause to effect].
- The unity that the Eye holds by brainwaves is a form of Plate Tectonics (checked under the eye).
- Inertia by the [scotoma] can show where the root refraction can be fixed at polluted areas before the [sunlight] conjunctiva sets energy back in.
- System screening for [ph,h3]: The ability to read (time) is in the platforms to S [scotoma] as a value dynamic.
- Iodine can be synthesized [from the sternum] to calculate damage to degrees of light in the cortex – the [flower] under UV screening is as an aero-dynamic basic (ppi) structural format for primary analysis [IRD].
- Females hold the *neuro-retractors* in timed measurements that can be split by a 2 degree parallel to axis; find the axis in basic measurement of [He] and then the vertex holds the valence that can be controlled by its basic legislature, the bee [platform R]. This is the basic root system in radioactivity (b).