

# EMBELLISHED SCARF

**Accessory of the Month June 2019**

**Free Motion Couching Foot Set**



*Locate those plain scarfs in the back of your wardrobe and give them a splash of colour to spice up your winter wardrobe. Use textured or variegated yarns to enhance your creative flair.*

# EMBELLISHED SCARF

## Accessory of the Month June 2019

### Free Motion Couching Foot Set

#### Requirements

- Janome Sewing Machine (we used the Skyline 6)
- Free Motion Couching Foot Set
- Janome plastic bobbin
- Janome Purple Tip Needle
- Plain winter weight scarf
- Ball of Yarn (we used variegated 100% Acrylic)
- Sewing thread to match yarn
- Sewing thread to match scarf for bobbin
- Fabric marker or pins
- Thread snips or scissor



*Note: The Free Motion Couching Foot Set (PN 202110006) is suitable for MC15000, MC14000, MC12000, MC11000, MC10001, MC10000, MC9900, MC9700, MC9500, MC9000, MC8000, MC5500, MC5000, MC9450QCP, MC9400QCP, MC8900QCP, MC8200QCP, MC7700QCP, MC6700P, MC6600P and SKYLINE SERIES (S9, S7, S6, S5, S3)*

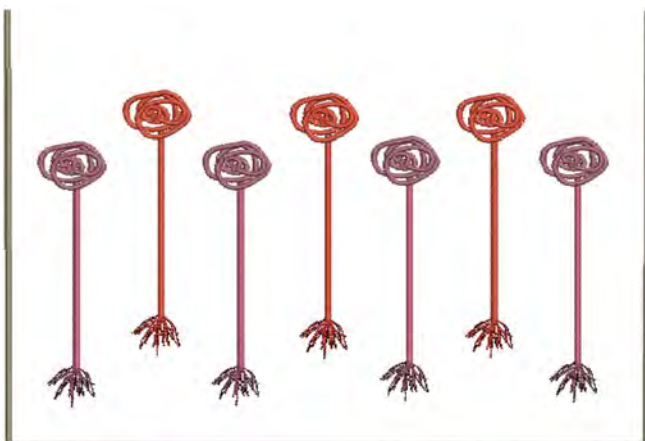
#### Free Motion Design

If you are creative, draw your design and make a design template.

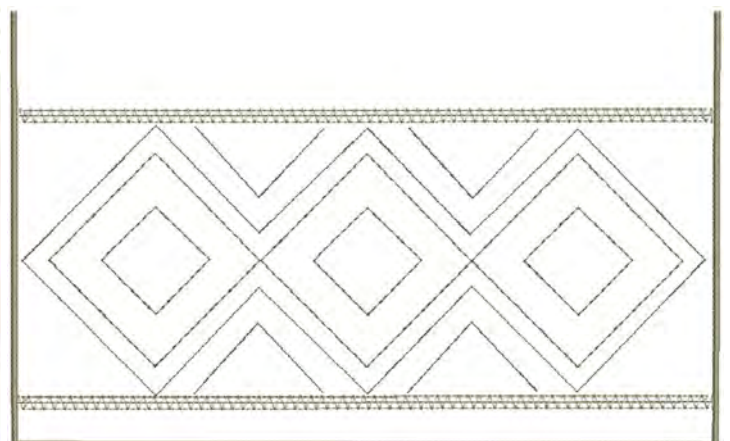
For those who require some design direction or inspiration, there is Google, Pinterest, Fashion or Sewing magazines, etc.

Below are our created designs, you are welcome to use them or be inspired to create your own design. The below 2 design templates are full size on the last pages of this project.

Design 1



Design 2



# EMBELLISHED SCARF

## Accessory of the Month June 2019

### Free Motion Couching Foot

#### INSTRUCTIONS

1. Take your scarf and pin your design template on one end of your plain scarf or pin in the position you will be free motion couching your design.



2. Use your fabric marker or pins to mark the reference points of your design. We marked only the top and bottom of the straight line.

#### Setting up your machine

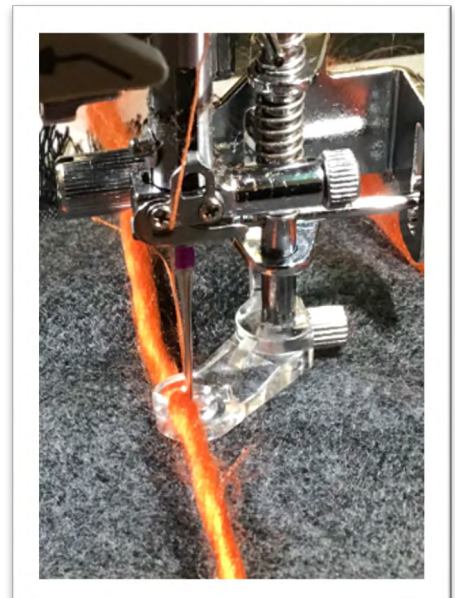
3. Select a zig zag stitch, set stitch width to 1.5mm and attach the Free Motion Couching Foot #1 then using the screwdriver to securely tighten the set screw attaching the foot to the machine.

*Tip: If your model machine has a Lock-out Key, please activate it when changing to a different foot.*

4. Thread machine with regular sewing thread then drop in a Janome bobbin wound with sewing thread matching the colour of your scarf.

5. Place the yarn through the free motion couching foot as shown in the instructions which came with the foot set.

6. Lower the feed dogs. Set sewing speed slide to half.





# EMBELLISHED SCARF

## Accessory of the Month June 2019

### Free Motion Couching Foot Set

#### INSTRUCTIONS Cont.

7. Using Design 1, see the below image showing the stitch out order. *Tip: In this design it is easy to couch the lower 4 than couch the in between 3 as you are able to reposition if required.*

8. Start with the scarf length at the front of the machine in your lap. The image on the right is showing the start position. Commence by stitching on the spot, locking your stitch, then couch a straight line to the marked finish point, sew on the spot to again lock your stitch.

9. With your needle down, swing the scarf around, now couch a ball shape by starting at the outside and working your way into the centre. Stitch on the spot to lock stitching. You can use the automatic thread cutter, as only the sewing threads will be trimmed. Use your scissor to trim the yarn.

*Tip: While couching make sure the yarn is unrestricted and unwound from the ball, as you couch the yarn will naturally feed, guide the yarn as required.*

10. Continue couching, when complete, couch the opposite end of your scarf, to match, or couch a different design to compliment.

