

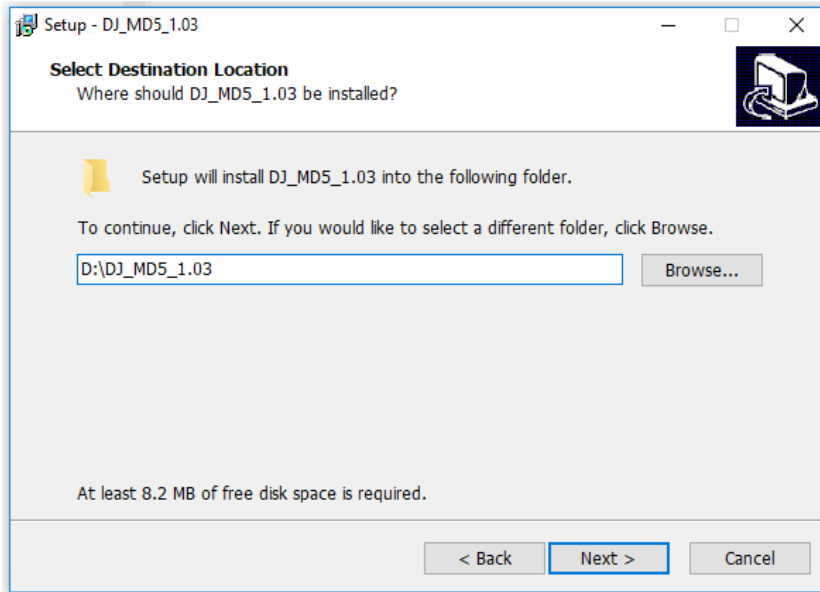
## ALINCO DJ-MD5T Series Firmware Update Instructions.

Please download the New CPS Utility 1.03 and FW 1.04 below

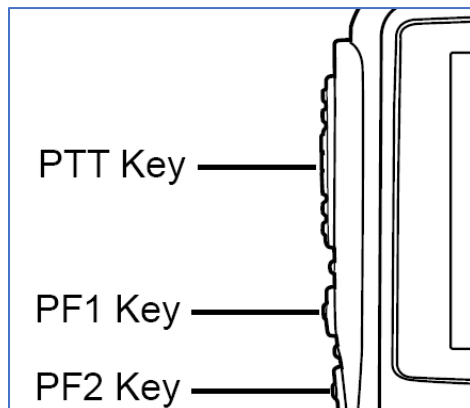
[https://www.remtronix.com/downloads/DJMD5\\_DriveD\\_Setup\\_1.03.zip](https://www.remtronix.com/downloads/DJMD5_DriveD_Setup_1.03.zip)

[http://www.remtronix.com/downloads/fw/DJ-MD5T\\_FW1.04.zip](http://www.remtronix.com/downloads/fw/DJ-MD5T_FW1.04.zip)

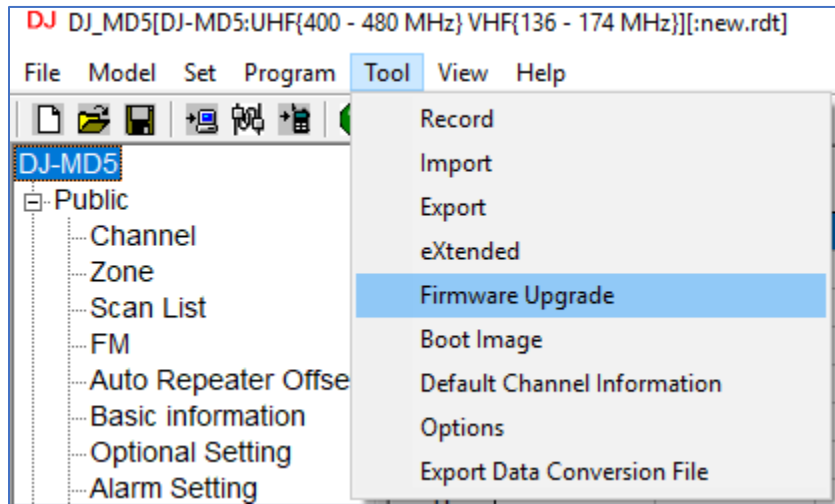
1. Uninstall previously installed CPE Utility 1.xx.
2. Unzip and Install latest CPE 1.03 Utility. By Default, the Installation set for "Drive D". Make changes to reflect the Drive you and to install this Utility to. Most cases should be "C:/DJ\_MD5\_1.03"



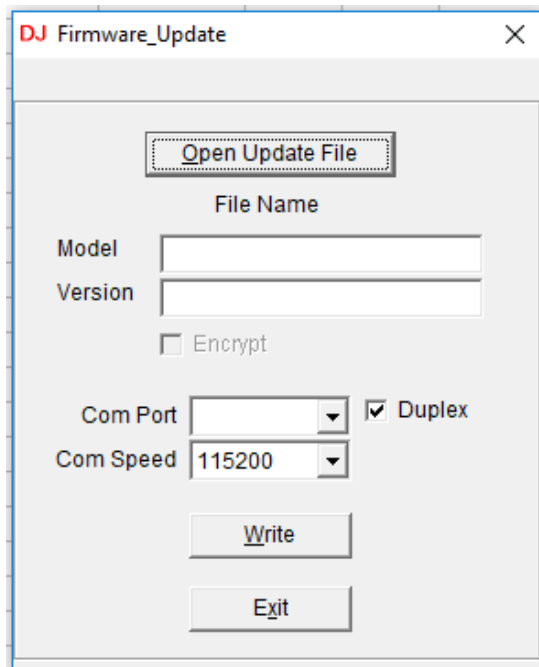
3. *"Make sure to RUN the FW Utility in windows Administrator mode".*
4. Turn ON the Unit with PF1 + PF2 Buttons Pressed. You will see a "RED" LED indicator Flashing indicating your Unit is now on Firmware Update Mode  
Plug in the USB Cable to PC & Radio



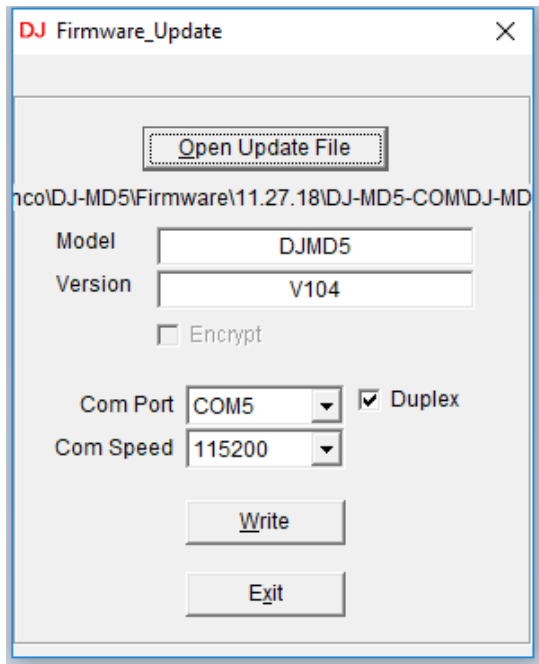
5. Open up the CPS Utility and Select “Tools” from the Top Menu and select “Firmware”



6. Locate the FW Data and select the “.spi” file data.



7. Choose the appropriate COM Port and lower the COM Speed to 115200



8. Select option "Duplex" and write the FW to your unit.
9. If all goes well, you should be able to FLASH with latest Firmware successful.  
Unit will Initialize and "Date Calibration screen" screen would display.