



SHARPEDGE

**INNOVATIVE PRECISION,
SHAPING THE
FUTURE**

Contact us:

+91 8882555330 , +91 880044924

sales@sharpedgetools.com,

www.sharpedgetools.com



SHARPEDGE

Sharpedge Tools Technology Pvt. Ltd., founded in 2016 and headquartered in Gurugram, India, is a leading provider of advanced industrial solutions and turnkey projects. The company specializes in modular flooring, safety barriers, and machine tooling, offering high-quality, durable products that cater to the needs of various industries.

Their modular flooring solutions are designed for industrial environments, ensuring durability and safety. The safety barriers they provide enhance workplace protection and compliance with industry standards, while their precision machine tooling systems improve manufacturing accuracy and efficiency.

By focusing on tailored solutions, Sharpedge Tools helps clients optimize their operations, boost productivity, and achieve long-term operational efficiency. The company's commitment to innovation enables it to deliver solutions that are customized to meet the unique challenges of each client.

OUR SERVICE



TIME ESTIMATION



TOOLED UP PROJECT



APPLICATION SUPPORT



PROVE OUT AT YOUR WORKS



REPAIR & REGRIND FACILITY



PRODUCTIVITY IMPROVEMENT



ACCESSORIES

OUR TECHNOLOGY PARTNER



we offer a comprehensive range of premium traded products from globally renowned brands such as Walter Tools and MPM.

Our product lineup includes precision machine tools, cutting tools, accessories, along with Rotoclear, designed to enhance machine window visibility, and Ecotile, a durable, high-performance modular flooring solution.

These superior-quality products are crafted to optimize operational efficiency, boost performance, and elevate productivity across diverse industrial applications.



www.sharpedgetools.com  

PROTECTION AND SAFETY

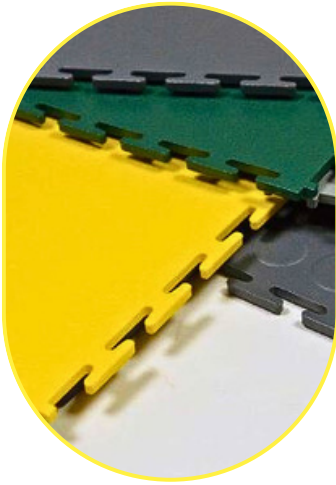


ABOUT SAFETY BARRIER

MPM Plastic Barriers: MPM offers a variety of plastic barriers designed for different purposes, including sneeze guards, partitions, crowd control barriers, and protective screens. These barriers are made from high-quality materials and are customizable to fit specific spaces and requirements.

- Protection of pedestrians and workers.
- Protection of rack and structures.
- Protection of vehicles and machinery.
- Savings in maintenance, repair and replacement costs.
- Maximum Return on Investments on Infrastructures.

MODULAR FLOORING

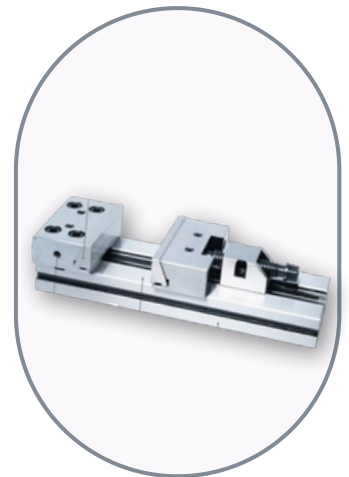


ABOUT MODULAR FLOORING

Ecotile produces interlocking floor tiles made from recycled PVC materials. Their tiles come in various designs and colors and are suitable for industrial, commercial, and even residential applications. Ecotile's products offer durability, slip resistance, and easy installation, making them ideal for high-traffic areas.

- 10 year WARRANTY.
- Cost effective modular flooring.
- Environmentally Friendly.
- Easy To Install Extremely Tough & Hard Wearing. R10 anti-sliprating.
- Bfl-S1 fire rating. Resistant to chemicals including oil and fuel.

WORK HOLDING



ABOUT FIXTURES & VICES

5th Axis: 5th Axis manufactures a wide range of workholding solutions, including precision vises, modular tombstones, and fixture plates. These products are designed to securely hold workpieces during machining operations, providing stability, accuracy, and efficient setup changes.

- Reduce Setup and Changeover Times.
- Solutions Available for 3, 4, & 5 Axis Machines.
- Repeatability less than 8µm.
- Increased Production Efficiency.
- quick-change mechanisms or self-centering capabilities, further streamlining the setup process.

CUTTING TOOLS



ABOUT WALTER

Walter offers a comprehensive range of cutting tools, tooling systems, and precision machining solutions designed to meet the diverse needs of industries such as automotive, aerospace, energy, general engineering, and more.

- Cutting-edge technologies drive productivity, efficiency, and performance improvements.
- Optimized machining processes lead to increased productivity and cost efficiency.
- Localized support and responsive service worldwide.
- high-quality construction ensure accurate and reliable machining results.
- Diverse range of tools for various machining applications and materials.

TOOL HOLDING

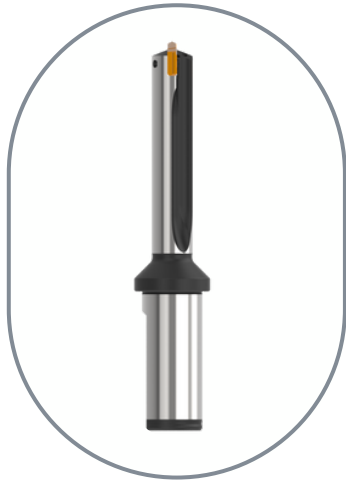


ABOUT TOOL HOLDING

we specializes in toolholding systems such as collets, toolholders, and clamping nuts. These products are designed to securely hold cutting tools in place during machining processes, ensuring precise and stable performance. Regofix's toolholding solutions are known for their accuracy, reliability, and ease of use.

- ER System ,PowRgrip System.
- micRun system Multi line.
- Measuring Technology Accessories.
- Made from high-quality materials for long-lasting performance.
- Suitable for various machining processes and industries.

HOLE MAKING

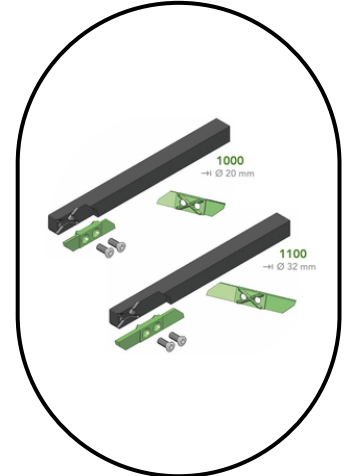
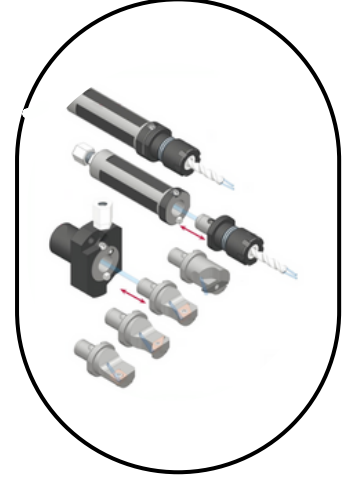
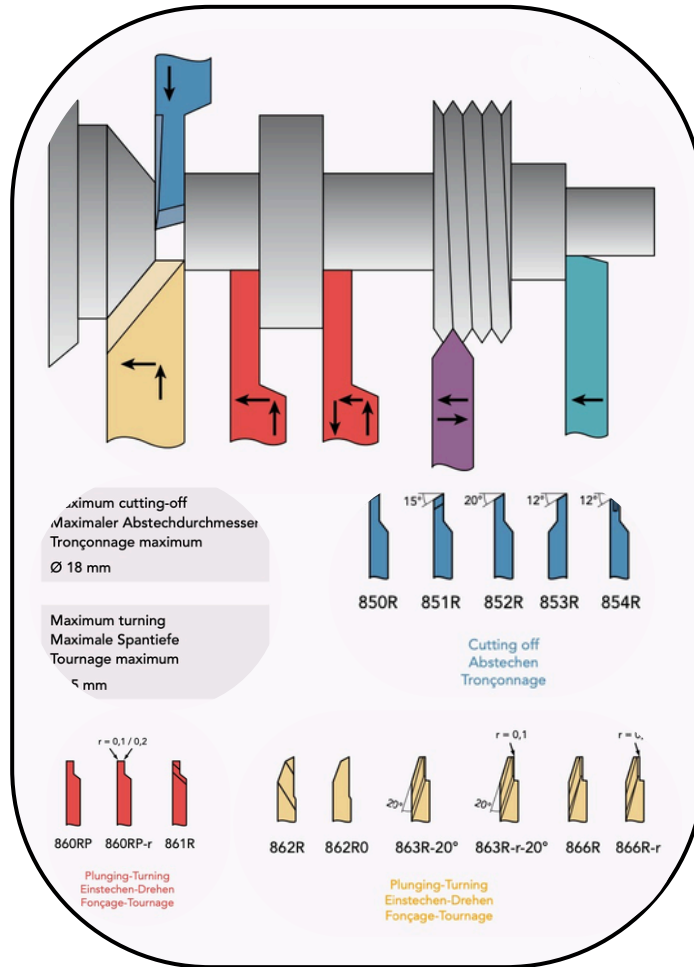
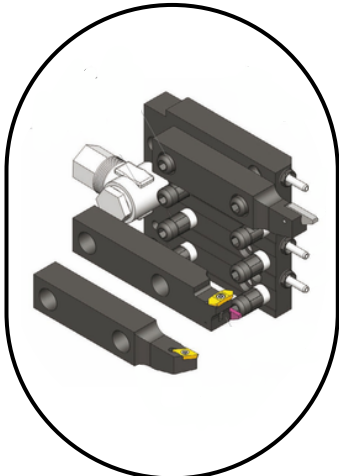
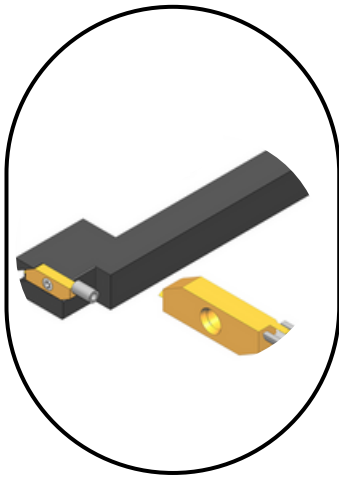


ABOUT HOLE MAKING

These high-precision boring and facing heads are specifically designed for machining applications that demand exceptional accuracy, consistent repeatability, and long-term reliability.

- Modular boring tools, facing and contouring heads, and automatic tool change systems.
- Used for a variety of machining tasks, including roughing, finishing, contouring, and threading.
- They are suitable for different materials, including steel, aluminum, titanium, and composites.
- Provide high accuracy, repeatability, and reliability in various machining applications.

MICRO TOOLING

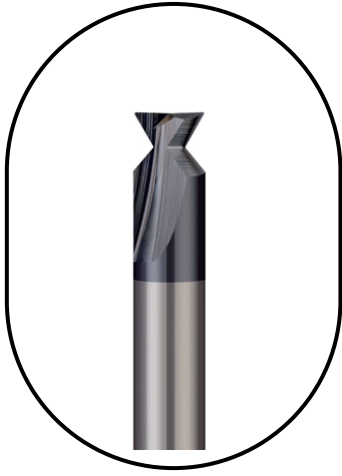


ABOUT BIMU

Offers a range of carbide inserts and related accessories tailored for various applications and requirements of automatic lathes. Development, production, and sale of carbide inserts and accessories specifically designed for automatic lathes.

- Improved turning surface finish.
- Improved chip control.
- Special profile insert to optimum.
- Increased feed or cutting depth.
- Cut off and back turning inserts with high performance geometries.

CARBIDE TOOLS



ABOUT CARBIDE TOOLS

Solid carbide feature a monolithic construction with cutting edges ground directly into the carbide body. Due to their exceptional hardness, wear resistance, and ability to perform at high speeds with great precision. They offer high accuracy, stability, and chip evacuation capabilities, resulting in improved hole quality and productivity.

- High cutting speeds and feed rates.
- Extended tool life and reduced downtime.
- Enhanced productivity and cost-effectiveness.
- Exceptional hardness and wear resistance.
- Efficient for detailed operations.

EFFECTIVE TOOLS

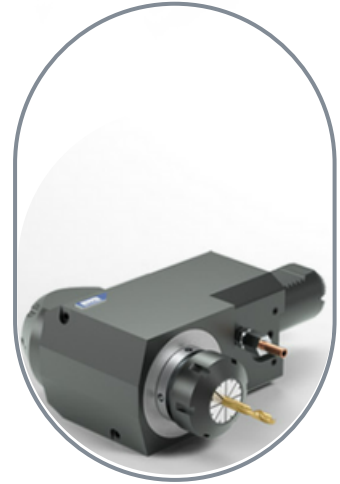
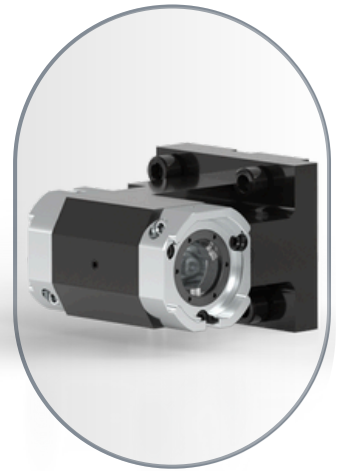


ABOUT TAPMATIC

Tapmatic manufactures a variety of tapping attachments and accessories for drilling machines and CNC machining centers. Their product range includes self-reversing tapping heads, synchronous tapping units, tapping chucks, and tapping collets. Tapmatic's tapping solutions are designed to improve threading accuracy, reduce cycle times, and extend tool life.

- Self-reversing CNC tapping attachments Synchroflex.
- TapWriter Scribe Writer.
- Drill-n-Tap DeBurr- Z with Floating.
- Reduces machining costs through optimized processes and tool longevity.
- Offers solutions for various materials, thread sizes, and applications.

ANGLEHEAD & LIVE TOOL HOLDER



ABOUT ANGLEHEAD & LIVE TOOL HOLDERS

custom tooling solutions for machining centers and CNC lathes. These products allow for multi-axis machining by enabling the tool to approach the workpiece from different angles, increasing flexibility and reducing setup times. Anglehead's products are widely used in aerospace, automotive, and mold-making industries for complex machining operations.

- Free setting of cutting direction. Extra compact head.
- Best for small M/C. Weight are less then half of conventional product.
- EWS CyberCon4 Monitors tool wear and usage, optimizing tool maintenance schedules and extending tool life.
- Allows for machining at various angles, expanding capabilities.
- Streamlines setups, saving time and increasing productivity.

SPINNING WINDOW & CAMERA



ABOUT SPINNING WINDOW AND CAMERA

Our products create clear insights into your machining processes where you would otherwise be unable to see through liquids or particles. Rotoclear's optical solutions accelerate start-up, help prevent collisions and enable you to continuously optimize processes.

- A spinning disc keeps your view constantly clear.
- 4K views from revolutionary perspectives
- Continuous visual information in real time is essential for optimum process monitoring.
- High-resolution images

0MIST – ELECTROSTATIC OIL MIST COLLECTOR



ABOUT 0MIST – ELECTROSTATIC OIL MIST COLLECTOR

0Mist is a high-performance Electrostatic Precipitator (ESP) designed to remove oil mist, smoke, and fine airborne particles from machining and grinding operations. Engineered with double-pass ESP technology, 0Mist ensures 99% filtration efficiency, creating a safer and cleaner working environment.

- Double-Pass ESP Technology – Filters particles down to sub-micron level.
- 99% Filtration Efficiency – Tested for high-performance air purification.
- Low Operating Cost – Minimal maintenance and no consumable filters.
- Industrial Grade – Built to withstand tough shop floor conditions.
- Energy Efficient – Operates on low power while delivering high airflow.

TOOL STORAGE & ACCESSORIES



ABOUT TOOL STORAGE & ACCESSORIES

We offer a wide range of tool storage systems and accessories that simplify and organize your workspace around the machining center. Our product range includes both precision metrology tools and durable storage solutions, designed to enhance operational efficiency and ensure easy accessibility of tools and instruments.

- Vernier, Micrometer, Dial Indicator etc.
- Deck Trolley, Tool Trolley , Work Bench etc.
- Force Master, Test Arbor , Tool Boy etc.

SHARPEDGE

S

Safety & Flooring

M

Machinings

A

Accessories

R

Round Tools

T

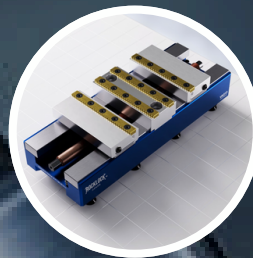
Tool Holdings



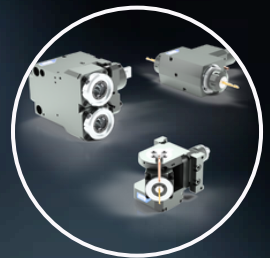
PROTECTION &
SAFETY



ECOTILE MODULAR
FLOORING



WORK HOLDING



TOOL
HOLDINGS



DEBURRING



MARKING



ANGLE HEADS



MIST
COLLECTOR



SPINNING WINDOW



MICRO TOOLING



HOLE MAKING



REAMING & RUN
OUT
COMPENSATION

SHARPEDGE

www.sharpedgetools.com



SHARPEDGE

CONNECT US



Registered Address : 38th milestone, khandsa , Gurugram, Haryana 122001

Factory Address : Plot no-161, Sector - 07 ,IMT Manesar, Gurgaon, Haryana 122052

sales@sharpedgetools.com, +91 8800449241 ,www.sharpedgetools.com