

# CRACK 'N CAB



Gem & Mineral Society of Syracuse, PO Box 2801, Syracuse, NY  
web: <https://www.gmss.club> Volume 54 Issue 2, Feb. 2024  
209 Oswego St (Ponderosa Plaza), Unit 15, Liverpool, NY

## Monday, February 19 - A Treasured Trilobite:

### Huge Trilobite Specimen Found at Sanger field

Dave Arcaro, our tenacious, fearless fossil hunter proves once again that persistence pays off. After many return trips to far off Sanger-field, he was richly rewarded by finding several sizable trilobite specimens in excellent detail and condition. Read his story on page 5.

See reprint of this article  
on Page 9 of this issue.

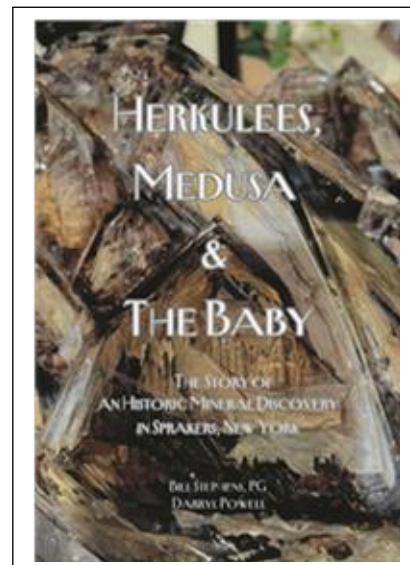


**“Dipleura *dekayi*  
– A CNY Classic”**

**Presented by Dave Arcaro & Chuck Galuski**

**January Meeting Review:  
Knowledge Corner,  
Field Trip Tales -  
Jeremy, Lee, and Tim  
The “Book” – Pages 6 - 9**

**Upcoming winter/spring shows  
(including Buffalo Gem Show)  
See Pages 4 and 5**



**Also in this issue:**

**Next GMSS Lapidary Classes begin on Feb. 10 at 10 AM!  
See Page 4**

## President's Message

John Sweeney



Come on in out of the cold. We've got plenty of things happening at the club during these blustery winter days. Thursday evenings from 5 to 7 we have group **cataloguing and labelling the club collection**. Jim Guinta, Jeff Huard, and I have started the process of sorting the cases and labeling the specimens.

**We could use some help**

**with that and entering the data on the computer and photographing the specimens to complete our efforts.** If

you are up for some labeling, typing or are good with a camera come on down. All are welcome. Amanda Lytle is working on **sorting our donated collection** on Thursday evenings as well and with Bill Verge on Saturdays and they could use some help too. We also have **lapidary classes starting on Saturdays**. Come down and cut a cab. The dates are highlighted further on in this issue.

On the administrative side we need some committee positions filled in the club. **We need a Hospitality Committee** to make sure we have refreshments at the meetings. Hey, this is important! We need people to coordinate with other club members as to who will bring in refreshments on what dates and to help serve them. This does not mean you are responsible for making all the refreshments, just making sure we have volunteers lined up.

**We also need Education Committee members** who can help organize our own in-house educational endeavors with the junior rockhounds and possibly set up outreach in the community where we can visit schools and libraries. We need people to organize this and some people who like to work with kids to implement it. We have a full curriculum and materials ready to go through the EFMLS Junior Rockhounds program.

We will also be **seeking out a Nominating Committee** between now and April who will be responsible for coming up with a slate of officers for next year. Most of the board is at the end of their two-year limits.

Please contact me or other board members if you can help with these committees.

We have decided on a **theme for this year's show**, and it is **"The Magic of Fluorescents."** We will be highlighting UV reactive minerals in display cases at the show. So, we'll be **looking for help setting up cases with UV lights and minerals**. If you have lights, minerals, carpentry or electrical skills, specimens or just an interest let me know.

**This is a big project and should be a big part of our show display this year.** It should be interesting and fun.

Once again let me know if you can help.

**Dave Arcaro** and **Chuck Galuski** will be presenting on their **trilobite hunting exploits** at the next meeting. Both are experienced collectors and will transport you back millions of years in the blink of an eye as they discuss and present their finds. Be prepared to see some fine specimens.

My email is [Pres@gmss.club](mailto:Pres@gmss.club)  
See you at the meeting.

John Sweeney, President

## Executive Board Meeting February 6, 2024 Minutes

Meeting called to order at 7PM by John Sweeney

### President: (John Sweeney)

Members have been working on cases, UV materials and collating collections.

John is looking into the possibility of having advertising in the Newsletter as revenue source. He will be checking with the Eastern Federation before implementing.

**Written notification in Crack and Cab of two constitutional changes raising dues, and moving audit to the day of Sept meeting or October Board meeting.**

**Motion** to announce and show at one meeting, post in the newsletter and be voted on at the next meeting. Cheryl first / Teresa seconded / accepted unanimously.

### Secretary Report: (Teresa Arnold)

Motion to accept minutes from the Jan. Board Meeting: Cathy first / Matt seconded / accepted unanimously.

Teresa will take the book home and make sure all minutes are in order (Board meeting, General meeting and Show meetings (where applicable).

### Treasurer Report: (Linda Clark)

January income: \$13,437.50 (includes dealer fees for upcoming show). January expenses: \$2,494.42

Amanda is working on computerizing the books.

Annual Scholarship of \$250.00 will be sent to the Eastern Federation.

**Motion made to approve Kris Boronczyk as liaison to the EFMLS.** Dick first / Cheryl seconded / approved unanimously.

Linda is still waiting for the IRS to open the program so she can file the club taxes.

### VP report: (Cathy Patterson)

Meetings and field trip:

**February meeting** will feature Dave Arcaro and Chuck Galuski speaking on **Trilobites**.

**March meeting** will feature Steve Shorey, Bill Verge' and some of the students speaking on the **Lapidary program**.

**April meeting** will feature Lee Levesque speaking about his **Tucson experience**.

**May meeting** will be the **Auction**.

**June meeting** will be **WORK NIGHT** for the July show.

**September meeting** will feature Amanda Lytle / **Antarctica minerals** and Linda Adams / **fluorescents**. The cost of renting the Canal Park has gone up to \$200.00, so we will look at a couple other options before booking for this year's picnic.

**Web Mistress: (Amanda Lytle)**

Amanda has been incredibly busy making changes and updates to the Web Site. Among many changes are new video section, digital library, open study area and YouTube updates. Amazing job, Amanda, thank you for all your hard work!

**Facebook: (Judy Cook)**

Judy is posting new content / she will start featuring fluorescents in preparation for the show.

**Membership: (Cheryl Brown)**

We have 151 members. Raised dues Jan 1, 2024. New Rates are published and make announcement Family \$20, Individual \$15, Life \$5, Junior \$10.

**Jr. Rockhounds: (Rick Moore / not present)**

We have 22 kids registered, but almost none are coming to meetings. We will **gather a committee** to get the program up and running / maybe change meeting day to Saturdays because meetings run pretty late for school nights.

**Hospitality:**

We need a committee to keep a schedule for hospitality. For the February meeting, Judy and Matt will bring cookies.

**Lapidary Committee: (Steve Shorey)**

New Classes. 3 students will start on Saturday. Metal working class Jim Guinta one day or two depending on sign up March or April.

**Show: (Dick Lyons)**

Soapstone being ordered for show. We can sell minerals at the show with no sales tax. Need display area (tent) for our fluorescents. Looked at Lakeland Firehouse working on layouts and feasibility of site for winter show.

**Newsletter Editor: (Larry Petry)**

Deadline for submissions is Wednesday. 2/7/24 at 11PM

**Building: Collection:**

Kammer: More collating, then move stuff to storage. Save some out for auctions, set up to sell at show. Actively working on cataloging club collection with Jeff, Amanda, Jim Guinta. Thursdays from 5 to 7PM

Sergeant at Arms: **(Matt Klinger)** No report

**New Business:**

Will put together a **Nominating Committee** for new officers this year.

Meeting adjourned at 9:15PM by John Sweeney

Respectfully Submitted:

Teresa Arnold / Secretary GMSS

**Geo Lexis (Puzzle)  
By Anne Fitzgerald**

**Flashy Fossils?**

Imagine digging in your sandy backyard and finding a tube-like chunk of something that looks like a lightning bolt.

Imagine me watching The Weather Channel when they do a re-enactment when they call the chunk "fossilized lightning."

Can you imagine my excitement? I couldn't wait to share this discovery with my club people. Perhaps they've never heard of "fossilized lightning", and I can spark their interest!

University of South Florida professor and geoscientist Matthew Pasek in collaboration with Luca Bindi, professor at the University of Florence Italy took a look at that object found by the homeowner who dug up the object in his backyard in Florida.



In this case, when lightning struck a tree, they believe it also blasted iron and carbon in the tree roots resulting in a new reduced form of phosphorous. The strange new form of calcium phosphite is so new it doesn't even have a name yet and has yet to be duplicated in the lab. If I had a choice in the naming, I would simply call it "Flashlite." I would not call it "fossilized lightning" however, because after my initial Weather Channel excitement, I did some research. I should have known by those quotation marks, but it took me awhile. Way too long in fact when I call myself a fossil fan and yet didn't realize that these lightning bolts cannot be real fossils. Unless that lightning bolt was an eel in a former life, it was not a fossil. The object found is more appropriately described as petrified lightning or a type

Wikimedia Commons of fulgurite. Many of these fulgurites have been found, but what made this object unique (and

still pretty exciting) is the fact that it consisted of a mineral not found naturally on earth but is found in objects in space. Who needs "fossilized lightning" when you really have "extraterrestrial material?"

How much do you know? Here is the lightning round. See if you can dispel these lightning myths. If nothing strikes you, the answers are on another page of this newsletter. The answers are on Page 5 of this newsletter.

### Lightning Myths (True or False?)

Lightning never strikes the same place twice.

People have been known to develop new creative abilities (like piano playing) after being struck by lightning.

Volcanic eruptions can cause lightning to strike.

You should shelter under a tree when lightning strikes.

You should lay flat on the ground to stay safe in a lightning storm.

Stay in your car during a lightning storm.

## Upcoming Events

**FEB. 19 – GMSS meeting – 7:30 pm** at the Clubhouse. "**Dipleura dekayi – A CNY Classic**" - Dave Arcaro and Chuck Galuski will talk about a locally found treasured trilobite - its characteristics, commonality and the journey in finding them. 7 pm – Knowledge Corner - Dave Milli will talk about calcium mineral. There will also be a short business meeting prior to their talk and **refreshments** will be available after.



Devonian Trilobite *Dipleura dekayi*, from The Museum of the Earth, Ithaca, NY.

**FEB. 27, 2024 – Show Committee meeting – 7 pm** at the Clubhouse. All are invited.

**MAR. 5, 2024 – GMSS Board meeting – 7 pm** at the Clubhouse. All are invited.

**MAR. 18 – GMSS meeting – 7:30 pm** at the Clubhouse. "**Marie Cole Skill Center**" Lapidary Students/Teachers Show and Tell. *Refreshments volunteers needed!*

**MAR. 26, 2024 – Show Committee meeting – 7 pm** at the Clubhouse. All are invited.

## Next GMSS Lapidary Classes begin on **February 10, 10 AM!**

Any Member or Non-Member interested in taking the three-week beginning Lapidary class please contact Bill Vergé at:

[b.verge@comcast.net](mailto:b.verge@comcast.net)

or text 617-872-4528 for more information.

**This is the class you need if you would like to use any of the Club's Lapidary equipment in the Marie Cole Lab.**

**GMSS Members \$60; Non-Members \$75 (Includes Membership to GMSS!)**

Bill Vergé

## **Upcoming Winter/Spring Shows:**

**Jan. 27- Feb.10—TUCSON, AZ:** Wholesale & retail show; Adam Aaronson; Mineral & Fossil Marketplace, 1333 N Oracle Rd; daily 10-6; Free; Get up close to gigantic sea monsters & full-size dinosaur skeletons! The Mineral & Fossil Marketplace is growing. New container lot, large tent, & remodeled gallery host international fine minerals & one of the best fossil exhibitions in Tucson. Come find meteorites, monster crystals; contact Adam Aaronson, (520) 245-3052; Email: [mineralfossilmarketplace@gmail.com](mailto:mineralfossilmarketplace@gmail.com); Website: [www.mfmshow.com](http://www.mfmshow.com)

**Mar. 2-3—WILMINGTON, DE:** Annual show; Delaware Mineralogical Society; DoubleTree by Hilton, 4727 Concord Pike (Rt-202); Sat. 10-5, Sun. 11-5; Seniors (60+) \$5, Adults (18 - 59) \$6, Juniors (12 - 17) \$3, Scouts in Uniform & Children under 12 Free when accompanied by a paying adult; Family Friendly show features educational exhibits of mineral, lapidary & fossil specimens; a roster of fine dealers of minerals, fossils, gems, jewelry; raffles of interesting specimens & a children's area, where youngsters may purchase inexpensive mineral & fossil specimens; contact Christine Verdi - (Show Chair); Email: [1DMS.President@gmail.com](mailto:1DMS.President@gmail.com); Website: [www.facebook.com/DEMineralShow](http://www.facebook.com/DEMineralShow)

**Mar. 2-3—NEW YORK, NY:** Wholesale & retail show; New York Gems Jewelry & Mineral Show; High School of Fashion Industries, 225 W 24th Street; Sat. 10-6, Sun. 11-5; \$ 6, 12 Years & Under Free with a Paid Adult; The High School of Fashion Industries, Show Sponsored & free lectures organized by the New York Mineralogical Club; contact Mohamed Bary, (347) 247-6568; Email: [barygems@gmail.com](mailto:barygems@gmail.com); Website: [www.barygems.com](http://www.barygems.com)

**Mar. 2-3—MERIDEN, CT:** Annual show; The Lapidary & Mineral Society of Central Connecticut; Maloney High School, Gravel St; Sat. 9:30-5, Sun. 10-4; Adults \$5; children under 12 FREE; Minerals, gemstones, crystals jewelry, & much more; contact Mike Zaglinski; Email: [Meridenlapminsoc@gmail.com](mailto:Meridenlapminsoc@gmail.com); Website: [www.lmscc.org](http://www.lmscc.org)

**Mar. 8-9—RICHBORO, PA:** Annual show; Leidy Microscopic Society; Advent Lutheran Church, 45 Worthington Mill Rd, 916 Senator Rd; Fri. 12-6, Sat. 9-6; \$25 for half table ; \$40 for full table; visitors fee - \$5 on Friday, \$10 on Saturday & includes lunch; Micromount Symposium - two guest speakers, silent auctions, free giveaways, sell, trade, swap micromounts, lunch on Saturday included; contact Donald McAlarnen, (610) 247-5097; Email: [donmcalarnen@outlook.com](mailto:donmcalarnen@outlook.com); Website: <https://leidymicroscopical.com>

**Mar. 23-24—CANTON, OH:** Annual show; Stark County Gem & Mineral Club; Stark County Fairgrounds, 305 Wertz Avenue; Sat. 9-5, Sun. 10-5; Adults \$5, Seniors \$4, Children 6-14 \$1, Scouts in uniform free; contact Show Chairman Vicky Waltz, (330) 862-2162.

**Mar. 23-24—PLYMOUTH MEETING, PA:** Annual show; Philadelphia Mineralogical Society & The Delaware Valley Paleontological Society; Lu Lu Temple, 5140 Butler Pike; Sat. 10-5, Sun. 10-4; \$7 per adult, \$2 kids 12 & under, Scouts in uniform free; Fossils, minerals, gems, speakers & exhibits. Kids Mineral Corner & Fossil Dig with free giveaways. Scouting merit badge information is available. Food & door prizes throughout both days; contact Douglas Klieger; Email: [dklieger@verizon.net](mailto:dklieger@verizon.net); Website: [www.philamineralsociety.org/](http://www.philamineralsociety.org/)

**Mar. 23-24—CHICOPEE, MA:** Annual show; Connecticut Valley Mineral Club; Castle of Knights, 1599 Memorial Ave; Sat. 9:30-5, Sun. 9:30-3:30; adults \$5, children 12 & under free with paid adult, scouts in uniform free with paid adult; Hourly door prize drawings for children & adults, free specimens for children, exhibits, 18 dealers, food available on site; contact Barbara J. Meyer, (978) 394-3144; Email: [bjmeyer56@yahoo.com](mailto:bjmeyer56@yahoo.com); Website: [www.cvmineralclub.org](http://www.cvmineralclub.org)

**Mar. 23-24—WYSOX, PA:** Annual show; Che-Hanna Rock & Mineral Club Inc; Wysox Vol. Fire Co. Social Hall, 111 Lake Rd; Sat. 9-5, Sun. 10-4; Adult - \$3, Students \$1, under 8 free; Fluorescent mineral program presented by UVBob. Exhibits of minerals, fossils and Native American artifacts. Dealers selling minerals, fossils, gemstones, jewelry. Mini-mine for the kids; contact Bob McGuire, (570) 928-9238; Email: [uvbob1942@gmail.com](mailto:uvbob1942@gmail.com); Website: [www.chehannarocks.com](http://www.chehannarocks.com)

**Mar. 23-24—WINSTED, CT:** Annual show; Silver Spiral Creations; Whiting Mills, 100 Whiting St; Sat. 10-4, Sun. 10-4; Free Admission; Rocks, Gems, Minerals & Jewelry show. Free admission. Kid activities. Door prizes; contact Lynne Patnode, (860) 459-9165; Email: [Lynne@silverspiralcreations.com](mailto:Lynne@silverspiralcreations.com); Website: [www.Silverspiralcreations.com](http://www.Silverspiralcreations.com)

**The Buffalo Geological Society, Inc.**  
**54th ANNUAL GEM MINERAL FOSSIL SHOW**

**Birthstones**

**1 DAY ADMISSION \$7 PER PERSON**      **2 DAY ADMISSION \$10 PER PERSON**

**Sat. March 16, 2024 • 9 am to 6 pm**  
**Sun. March 17, 2024 • 10 am to 5 pm**  
In the Market, Grange, and NYS Police Buildings  
located the Fairgrounds in Hamburg, NY

**Mining for Minerals and Fossils Mini Mine for Children**  
**A GREAT FIELD TRIP FOR THE FAMILY & a real learning experience**

**ALSO SHOWING**  
NYS Parks & Recreation  
Reinstein Woods Nature Center  
Buffalo Association of Professional Geologists  
Paleontological Research Institute  
SUNY Fredonia Geology Department

Demonstrations • Beads • Jewelry • Presentations  
Private Gem Collections • Unique Gifts  
DRAWINGS & REFRESHMENTS

**Scouts in uniform & children 12 yrs & under FREE**

For more information, go to: <https://www.bgsny.org/>

## Answers to Geo Lexis

### Lightning Round Answers

Lightning never strikes the same place twice. **False**

People have been known to develop new creative abilities (like piano playing) after being struck by lightning.

**True** (Maybe Ben Franklin really wanted to be a musician.)

Volcanic eruptions can cause lightning to strike. **True**

You should shelter under a tree when lightning strikes. **False**

You should lay flat on the ground to stay safe in a lightning storm. **False**

Stay in your car during a lightning storm. **True**

Sources and further reading:

<https://en.wikipedia.org/wiki/Fulgurite>  
<https://weather.com/storms/severe/video/incredible-discovery-after-a-florida-lightning-strike>  
 9/6/2023 Phosphorous material found only in space (Weather Channel)  
[spacehttps://interestingengineering.com/science/lightning-strike-creates-new-phosphorus-material](https://interestingengineering.com/science/lightning-strike-creates-new-phosphorus-material), Deena Theresa 4/12/23  
<https://newatlas.com/science/fossilized-lightning-fulgurite-calcium-phosphite/>  
 Michael Irving 4/12/23  
<https://earthhow.com/lightning-facts>  
<https://www.iii.org/article/lightning-safety-10-myths-and-the-facts>

## Jan. 15, 2024 - Club Meeting

Photos by Judy Cook

### Knowledge Corner – Dave Millis

In geology, **petrification** is the process by which organic material becomes a fossil through the replacement of the original material and the filling of the original pore spaces with minerals. Petrified wood typifies this process, but all organisms, from bacteria to vertebrates, can become petrified (although harder, more durable matter such as bone, beaks, and shells survive the process better than softer remains such as muscle tissue, feathers, or skin). Petrification takes place through a combination of two similar processes: permineralization and replacement. These processes create replicas of the original specimen that are similar down to the microscopic level.

Petrified wood is a fossil. It forms when wood material is buried by sediment and protected from decay due to oxygen and



organisms. Then, groundwater rich in dissolved solids flows through the sediment, replacing the original plant material with silica, calcite, pyrite, or another inorganic material such as opal. The result is a fossil of the original woody material

that often exhibits preserved details of the bark, wood, and cellular structures. Petrified wood can range in color from shades of brown and tan to shades of red, yellow, and even blue, depending on the minerals that were present during the petrification process.



A **pseudomorph** is a mineral formed by chemical or structural change of another substance, though retaining its original external shape. The name literally means "false form." Although pseudomorphs give the appearance of being crystalline, they are commonly granular and waxy internally and have no regular cleavage; those that are crystalline have optical properties different from those required by their outward



Check out what Dave is pointing to in the detail photo that follows.

form. They retain the external shape and form of a pre-existing mineral, called the protolith, but their internal composition has been transformed into a different mineral, called the neomorph. Imagine a mineral wearing a mask, its true chemical identity hidden beneath the familiar



form. A common example of this is petrified wood, in which all the cellulose fibers have been replaced by silica, even those in the bark. Pseudomorphs can be formed by deposition of one mineral on the surface of crystals of another.

Dave' finger is pointing to a calcite cluster that has been transformed into turquoise.

Read more here:

<https://www.geologyin.com/2018/04/what-is-pseudomorph-mineral.html>

## Pyrite vs Marcasite

Dave said pyrite shines in the middle (right).



**Polymorphism** is the ability of a specific chemical composition to crystallize in more than one form. This generally occurs as a response to changes in temperature or pressure or both. The different structures of such a chemical substance are called polymorphic forms, or polymorphs. A polymorph is a mineral with the same chemical composition but a different internal structure. Aragonite and calcite are polymorphs – both contain calcium carbonate ( $\text{CaCO}_3$ ) but have different internal structures. Another common polymorph is carbon (C) – graphite (used in pencils) and diamonds are both made of pure carbon. The difference in their internal structures results in a drastically different color, habits, and economic use. This is the reason medicines have an expiration date!

## Program - Field Trip Tales:

### Jeremy and his Herkimers



Jeremy displays one of the Herkimer diamonds he uncovered from Diamond Mountain Mining in Little Falls, NY. Key word: Perseverance!

#### Special Note:

**Scepter quartzes** are crystals in which a second-generation crystal tip grew on top of another quartz crystal. In a typical scepter quartz, the younger tip is larger than the first tip, but it may also be smaller (then sometimes called a "reverse scepter"). To be a scepter quartz, the second-generation quartz crystal must grow parallel to the underlying crystal. Whether the second generation grew on the old tip, sideways on the prism, or somewhere in between is not relevant.

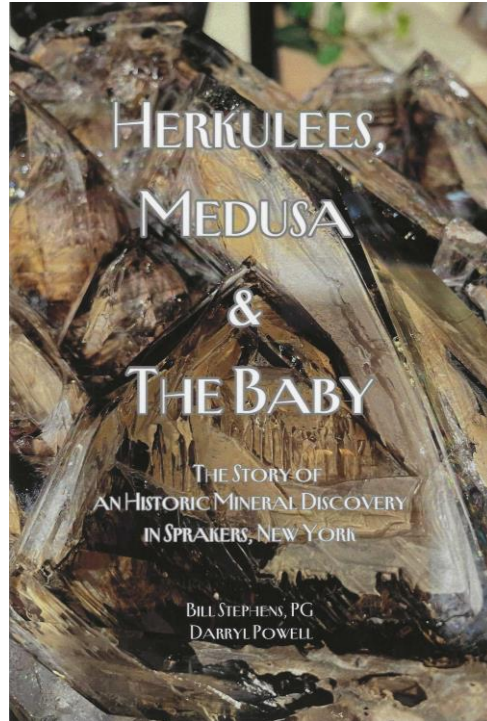


Small crystals usually carry only one scepter, but on large crystals the faces may instead be covered by numerous smaller scepters. Scepters may also be stacked in parallel. (www.mindat.org.)

### Lee and his skeletal Herkimers



Lee with the 4 Gems he discovered May 28th - Medusa, Herkulees, The Baby and Wendy (she's sitting with Lee)! Lee discovered "the most amazing minerals to come out of New York state." This came about after 9 – 10 years of mining and hundreds of visits, from sunup to sundown. He "hit the mother lode" at Mohak Valley Mineral Mining in Sprakers, NY on just his fifth visit there!



And here it is!



Tim Hart presented Lee with a check raised from the raffle to help fund his first trip to the Tucson Gem Show this month, as a guest exhibitor.

As a result of Lee' historic mineral discovery, a book about his finds has been published by Diamond Dan Publications. It was written by Bill Stevens (EFMLS President and Regional Vice President, Region 4) and Darryl Powell (owner of Diamond Dan).

### Tim and his Herkimers & Coral



Tim found Herkimers at Diamond Mountain Mining, too. He had never dug in dirt before at any mine.





The horn coral were found at the south end of Skaneateles Lake. The one with eyes is quite developed!

Dave displays a set of his different cabochons, as well as a completed wire wrapped sample (above).

Dave taught a class on how to make them on January 20th.

### Sangerfield Trilobites

by David Arcaro

Earlier this past October, I was told by fellow club member, Lou Budell, of an excellent fossil locality in the town of Sangerfield right here in Central New York. For the past five years, I have been looking for whole trilobite specimens because until now I had only found small parts and pieces of them. Unfortunately, when I got news of this locale I had just undergone shoulder surgery and I knew my ability to dig would be limited. Being the die-hard rock hound that I am, I went anyway.

The first trip to the Sangerfield road cut I took my wife and stayed for a couple of hours. I managed to find a few nice trilobite heads and tailpieces along with assorted brachiopods, gastropods and nautiloids. After that, I made about a half dozen more trips always finding the same types of fossils until December 9<sup>th</sup> when I finally hit the jackpot!

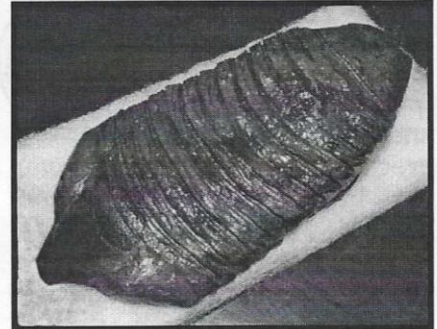
Prior to this date, I was only able to search through the debris at the *bottom* of the road cut because of my healing shoulder. On December 9<sup>th</sup>, my shoulder was healing nicely and I was feeling well enough to do some serious digging. I arrived early in the morning so I would have a lot of time to work. On the previous trips, I had scoped out a particular spot on a ledge higher up on the road cut. I could tell someone had worked it before. It seemed easy to work being filled with cracks and fractures. I was there for a couple hours finding the usual fossils after I removed a section of the cliff. Then I noticed one of the most beautiful sights I have ever seen. A lovely, very detailed trilobite about the size of a large orange was sitting there in the

rock ledge. My heart was pounding to say the least! Even being an amateur, I knew that the real work had just begun. Fossils, unlike minerals, do not come in vugs, so the utmost care needs to be taken when removing them. I'm sorry to say I didn't use enough and the specimen was shattered. Believe me, I was devastated. I collected as much of the specimen as I could but about half of the trilobite just disintegrated. I still had a few hours to dig so I decided to move a couple feet to my right.

It didn't take long before I uncovered another awesome sight. This time a trilobite 6 ½ inches long laid out flat was staring up at me. Again, the detail of this specimen amazed me. Sadly, this specimen too broke apart but most of the pieces were salvaged and glued back together. My only consolation on this trip after breaking these specimens was I did find a one-inch long specimen that didn't shatter though it was not nearly as impressive. I left Sangerfield wanting more.

That night after I got home, I called some of the club members. I got Tim Hart interested enough to go with me Saturday, December 11<sup>th</sup>. We arrived about 7:30 AM and by 11:00 we hadn't found any whole fossils but did find plenty of pieces. Just as we were packing up to leave, I asked him for a couple more minutes because I had a "feeling". About fifteen minutes later, I was staring at another awesome specimen. This time I swore to myself that I would get this beauty and it would be intact. Success, I did it! The approximately 6 inch long trilobite had

minimal damage to the tail and head, not enough to take away the overall beauty of the piece.

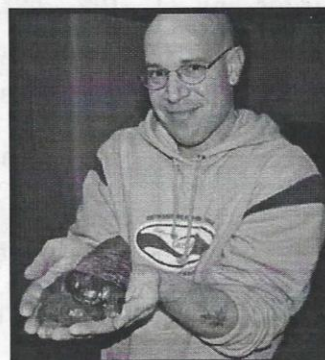


Photos by Loren Patterson

Now I'm hooked on collecting trilobites, (this coming from a former avid mineral collector of 5 years). I was so excited about the find that on December 14<sup>th</sup>, with 2 inches of snow on the ground, I went back to that spot and found another nice, golf ball-sized trilobite.

I highly recommend visiting the Sangerfield fossil location. Not only does it hold nice treasures in its hills but it's located in beautiful countryside with quiet surroundings. To get there take

**This is a  
reprint of the  
January 2005  
issue of  
Crack 'N Cab**



hunting for treasures. He is, however, concerned about our safety, so be extra careful while on or under the cliff. Happy Hunting!

< Dave Arcaro and friend

**And, In Other News****Penn Dixie's largest grant takes care of No. 1 request of visitors: A permanent bathroom**

Barbara O'Brien Jan 9, 04 The Buffalo News

Penn Dixie Fossil Park and Nature Reserve soon will be able to fulfill a top request of visitors: real restrooms. Erie County gave the Hamburg Natural History Society, which operates the fossil park, a grant totaling \$827,000 to construct a permanent bathroom facility.

"It will take care of the No. 1 concern of our visitors by offering them a place to take care of No. 1 and No. 2," Executive Director Phil Stokes said in an email, adding that the grant is the park's largest single gift. The funding will be used at the Jeffrey Boulevard side of the park, where a new entrance and parking area will be located.

[https://buffalonews.com/news/local/penn-dixie-fossil-park-restrooms-grant-erie-county-hamburg-natural-history-society/article\\_1821dc56-bec6-11ee-8655-f7dc6ab5294f.html?utm\\_medium=social&utm\\_source=email&utm\\_campaign=user-share](https://buffalonews.com/news/local/penn-dixie-fossil-park-restrooms-grant-erie-county-hamburg-natural-history-society/article_1821dc56-bec6-11ee-8655-f7dc6ab5294f.html?utm_medium=social&utm_source=email&utm_campaign=user-share)

*I'm sure everyone will be relieved.*

**Shark fossils found in Kentucky and Alabama lead to discovery of two new species**

By Social Links for Angeli Gabriel, FOX Weather  
Published Feb. 3, 2024, 5:31 p.m. ET

Two new-to-science shark species that lived more than 325 million years were discovered recently, the National Park Service announced on Thursday.

The discovery was made through the Paleontological Resources Inventory at Mammoth Cave National Park in southern Kentucky. Using fossils collected at Mammoth Cave and in northern Alabama, PRI researchers identified the shark species *Troglododus trimblei* and *Glikmanius careforum*.

*Troglododus trimblei* is believed to have grown to about 10-12 feet long, or approximately the size of an oceanic whale tip shark, according to the NPS. It was identified by using adult and juvenile teeth.

*Glikmanius careforum* is believed to have been around the same size at 10-12 feet long, the NPS said. It was identified by using teeth found at Mammoth Cave and Alabama, along with a partial set of jaws and gills found at Mammoth Cave. Finding shark fossils in what are now landlocked areas may seem puzzling. However, the NPS said that Kentucky and Alabama were once covered by

grant is the park's largest single gift that the grant is the park's largest single gift Executive Director Phil Stokes said in an email, adding that the grant is the park's largest single gift. that the grant is the park's largest single gift. Executive Director Phil Stokes said in an email, adding that the grant is the park's largest single gift.



water, being part of an ancient seaway more than 325 million years ago.

Finding shark fossils in what are now landlocked areas may seem puzzling. However, the NPS said that Kentucky and Alabama were once covered by water, being part of an ancient seaway more than 325 million years ago.

[https://nypost.com/2024/02/03/news/shark-fossils-found-in-kentucky-and-alabama-lead-to-discovery-of-two-new-species/?utm\\_source=email\\_sitebuttons&utm\\_medium=site\\_buttons&utm\\_campaign=site\\_buttons](https://nypost.com/2024/02/03/news/shark-fossils-found-in-kentucky-and-alabama-lead-to-discovery-of-two-new-species/?utm_source=email_sitebuttons&utm_medium=site_buttons&utm_campaign=site_buttons)

**Unlocking Prehistoric Secrets: Microfossils Shed New Light on Euglenoids' Mysterious Past**

By UTRECHT UNIVERSITY FACULTY OF GEOSCIENCES JANUARY 27, 2024

In a new study published in the journal *Review of Palaeobotany and Palynology*, a team of Dutch, American, British, German, and Australian scientists shed new light on a group of "problematic" microfossils that have remained a mystery for nearly a century. By comparing microscopic fossil cysts in 200-million-year-old pond sediments from cores drilled in Germany and the Netherlands to much older Paleozoic, and much younger remains in Holocene lakes in Greece, and finally to living protists in a pond in Australia, the researchers establish a 400-million-year evolutionary history of the euglenoids.

<https://scitechdaily.com/unlocking-prehistoric-secrets-microfossils-shed-new-light-on-euglenoids-mysterious-past/>

...





**Gem & Mineral Society of Syracuse**  
**PO Box 2801**  
**Syracuse, NY 13220**  
**First Class Mail**  
 Time-Dated Material



[www.amfed.org](http://www.amfed.org)



[www.amfed.org/efms](http://www.amfed.org/efms)



[Future Rockhounds](#)

Eight people organized the Gem and Mineral Society of Syracuse in 1951. Since then, it has grown in membership to include adults, families and young people. The Society was incorporated in 1969 under the same name.

The objectives of the Society are to stimulate interest in mineralogy, Paleontology and lapidary arts. Member interests include collecting, identification, and display of minerals, gems and fossils. Members share and develop their artistic skills in jewelry design and creation.

Our monthly meetings provide social and educational experiences. Field trips give collectors chances to find specimens and enjoy the outdoors, exercise and time with old and new friends.

**Meetings – 3rd Monday of the month**

**Junior Rockhounds @ 6:30 – General Meeting @ 7:30**

(NO meetings July, August, December)

209 Oswego St (Ponderosa Plaza) Unit 14 & 15, Liverpool, NY

Visitors are ALWAYS welcome!

See online Newsletter <https://gmss.club/crack-n-cab-newsletter>

You can also visit our Facebook Page

**Annual Member Dues**

Adult \$15 – Family/Couple \$20 – Junior \$10 – Life \$5

If you would like to join or renew membership, download the application form (PDF)

see <https://gmss.club/general-membership#0fb080f6-af56-4921-a12b-17cb93d2cd2c>

You can get a form at a meeting or send requests to: GMSS, PO Bo 2801, Syracuse, NY 13220. We will mail an application/renewal form to you.

**2023 – 2024 GMSS Officers/Contacts**

**-President:** John Sweeney [pres@gmss.club](mailto:pres@gmss.club)

**-Vice-President:** Cathy Patterson [vp@gmss.club](mailto:vp@gmss.club)

**-Treasurer:** Linda Clark [treasurer@gmss.club](mailto:treasurer@gmss.club)

**-Secretary:** Teresa Arnold  
[secretary@gmss.club](mailto:secretary@gmss.club)

**-Jr Rockhounds:** Rick Moore [kidsrock@gmss.club](mailto:kidsrock@gmss.club)

**-Membership Chair:** [members@gmss.club](mailto:members@gmss.club)

**-Sgt at Arms:** Matt Klinger [sgtatarms@gmss.club](mailto:sgtatarms@gmss.club)

**-GemWorld Show Chair:** Cheryl Brown 315-708-9122  
[show@gmss.club](mailto:show@gmss.club)

**Past President:** Dick Lyons [pastpres@gmss.club](mailto:pastpres@gmss.club)

**-Club Librarian:** Steve Albro 607-756-2298  
[library@gmss.club](mailto:library@gmss.club)

**-Lapidary Committee Contact:** Steve Shorey  
[lapidary@gmss.club](mailto:lapidary@gmss.club)

**-Newsletter:** Larry Petry 315-472-9226  
[editorgmss@gmail.com](mailto:editorgmss@gmail.com)

**-Facebook:** Judy Cook [socialmedia@gmss.club](mailto:socialmedia@gmss.club)

**-Website:** Amanda Lytle [webmaster@gmss.club](mailto:webmaster@gmss.club)

**-Photographer Extraordinaire:** Judy Cook

**-Hospitality Committee Chair:**  
 315-885-4416 [hospitality@gmss.club](mailto:hospitality@gmss.club)