

CRACK 'N CAB



Gem & Mineral Society of Syracuse, PO Box 2801, Syracuse, NY
web <https://www.syracusegemociety.com> Volume 52 Issue 3, **March 2022**
209 Oswego St (Ponderosa Plaza), Unit 15, Liverpool, NY



Welcome to March!

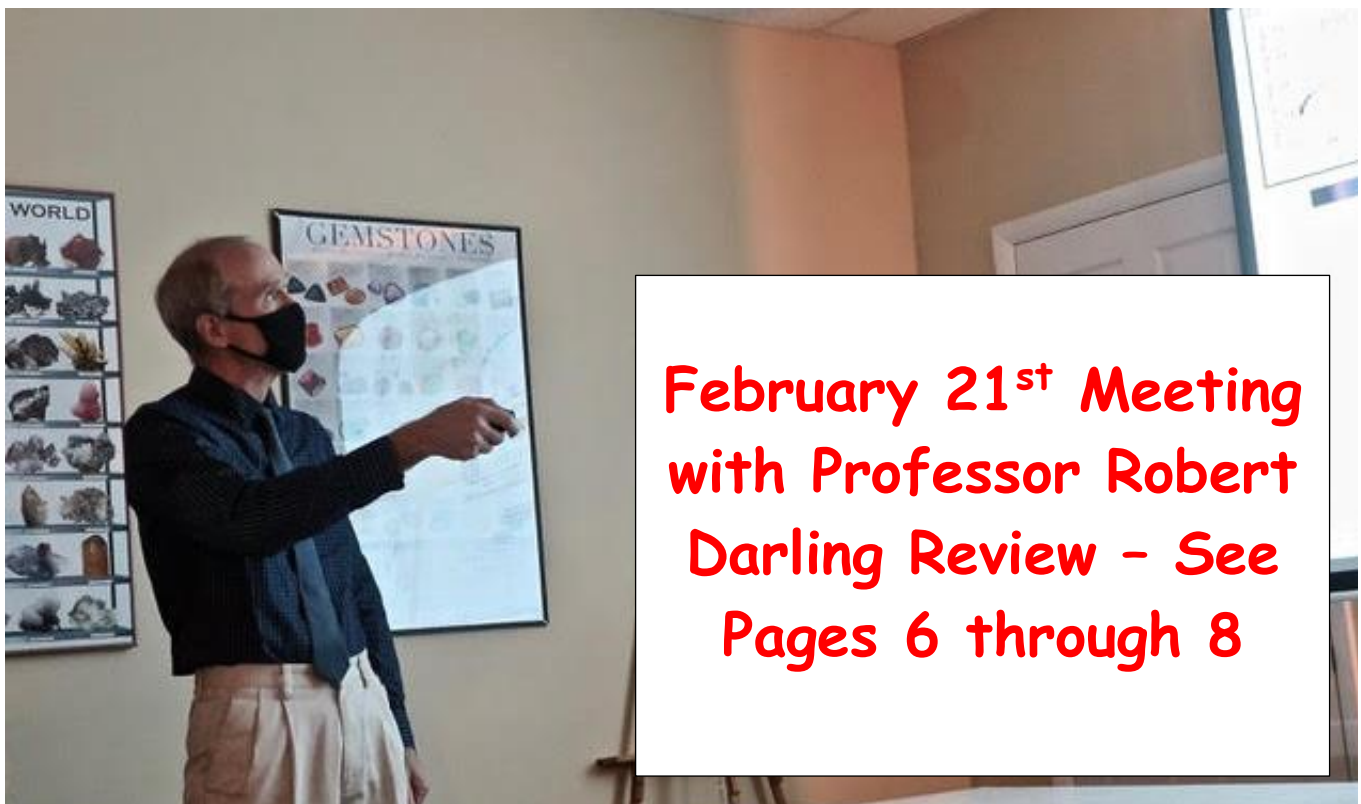


March 21, 2022 Meeting
7:30 pm @ the Clubhouse

Our Featured Speaker:

Calvin Prothro

Associate Professor of Geology
and Planetary Sciences at OCC



February 21st Meeting
with Professor Robert
Darling Review - See
Pages 6 through 8

President's Message

Dick Lyons



Keith Gilmer is looking for volunteers to take over one of the **officer positions** for our next fiscal year. Please seriously consider making this your future with our club.

As listed in this newsletter, you can visit the **Buffalo and Che-Hanna shows** this month. The Wayne County Club is finally having a show again in June. I highly recommend a visit to one of these shows. Any of those events would be a fun filled trip for you.

Our next **show committee** will be on **March 22nd at 7:00**. As of this week, 48 retail dealers are planning on participating in our show. Four wholesale dealers have already returned their contracts. We also have 6 vendors for the Metaphysical Center. The time slots for speakers in the Learning Center have been filled.

We are considering a **field trip this April** to one of the Herkimer Diamond mines. Lord's Corners, where you will find horn coral, is on are list of possible field trips. There are a number of collecting sites in St. Lawrence County where we can collect for a fee or free later this year.

Please let **Kris Boronczyk** know if you have any interest in joining us on the previously suggested field trips for this year. Do you have any locations where you have visited in the past and would like to go there again? I heard that you can find Larvikite on the beach at Sandy Pond which is just North of Rainbow Shores.

Dick Lyons

Secretary's Reports

Charlie Brown

Monthly Member Meeting, 2-21-22

Dr. Robert Darling, Distinguished Professor of Geology, S.U.N.Y. College at Cortland was our guest speaker at our monthly meeting. His presentation was about non-gem quality blue sapphire (corundum) grains he located in nelsonite found at the site of a hydroelectric plant on the Black River at Port Leyden, NY. Nelsonites are very fine-grained rock that are silica-poor. Dr. Darling's finding was a new type of occurrence in that silica-poor rocks are normally not considered to be a source of sapphire.

Dr. Darling's explanation of how the blue sapphires are formed and the chemistry involved sparked interest in making a rockhounding trip to Port Leyden in the Western Adirondack Highlands. Past GMSS President **Mark Grasmeyer** has volunteered to investigate the accessibility of the site for a club excursion.

Show Committee Meeting, 2-22-22

The meeting was called to order by Show Chair **Cheryl Brown**. 13 members attended.

- The previously determined show theme for the 2020 show that was not held, was retained. Our 55th Gem, Mineral, Fossil and Jewelry Show will be titled, '**Fossils of New York**'
- 12 Committee position coordinators volunteered, and their responsibilities were discussed.
- Tasks for our regular June work night member meeting were determined
- Show drawings were discussed to include the *Straw Draw*, *Grand Prize*, the *Hourly Ticket Drawing*, and a new *2 Hour On-Going Silent Rock Auction*
- There was discussion of creating a club sponsored rock identification table as a service to show attendees.

- There was discussion of activities to include in the Youth Area.
- There was discussion of changes to the post card advertisement that is sent out
- The next committee meeting will be held on **Tuesday, March 22nd at 7:00 PM.**

Executive Board Meeting 3-1-22

The meeting was called to order by **President Dick Lyons**. Sgt. at Arms John Sweeney, Editor Larry Petry, and Webmaster Dana Schwartz were not in attendance.

Per prior arrangement, Cheryl Brown is acting on Larry's behalf in assisting to produce the March *Crack 'N Cab* issue.

Treasurer Mary Davis in conjunction with President Lyons reported that our EFMLS club membership information and insurance coverage is all submitted and in order. Also, as of 3/1, our July show now has under contract 41 retail dealers and demonstrators, 4 wholesale dealers, and 6 metaphysical practitioners to participate.

Show Chairperson Cheryl Brown gave a brief re-cap of the committees 1st meeting held on Tuesday, February 22nd. See the meeting minutes above this report section.

Vice President **Kris Boronczyk** reports that:

- **Calvin Prothro**, Associate Professor of Geology & Planetary Science and S.U.N.Y. @ O.C.C. will be our program **speaker on March 21st** talking about ***Rocks and Minerals of Mars***.
- Our **April 18th** Monthly Member meeting will be our **Spring Rock & Fossil Related Auction**.
- **Spring Field Trips** are being considered to the **Western Adirondacks, Lord's Corners, Herkimer Mines, and St Lawrence sites**.

Junior Rockhounds leader Rick Moore reported that the Junior Rockhounds are **meeting at 6:30 PM**, an hour before our monthly meeting, and are again participating in the Merit Badge Program. Presently, Junior Rockhound participants are working to master the *Mineral Identification* unit.

President Lyons reiterated that a **Club Work Day will be held on Saturday, March 5th from 10 AM to 2 PM**. The planned agenda is:

- routine clean-up in the meeting and workshop areas,
- library organization work (necessitated by the removal of the shelving and contents on one wall when the hot water heater ruptured in August flooding the floor and carpet in one third of Suite 15)
- display cabinet set-up work, and
- completing the processing of previously donated rock and fossil samples in preparation for our April Meeting *Mineral, Fossil, and Related Items Auction*.

Respectfully submitted,

Charlie Brown



Aquamarine tumbled stones

**Geo Lexis (Puzzle)
By Anne Fitzgerald**

"Go Fly A Kite"

The brilliant Benjamin Franklin is sometimes credited with coming up with the idea of Daylight Savings. More natural light, he argued, would surely save on lamp oil and candles. But some scholars point out his whimsical article about the matter was only a joke. But joke or not, I think Ben probably had his own personal reasons for promoting this idea: More time for kite-flying.

An entomologist, George Hudson, is also credited with the concept, and he also had his own personal reason: He wanted more time for bug hunting.

Today we have lots of light, probably more than we need since we have light pollution. But scientists have found compounds that can be used to mark and pave our roads, and possibly light whole buildings that are much more environmentally friendly than what we have now. There is even a bike path in Poland lit by solar light.

Unscramble the following to describe compounds that glow-in-the-dark and may provide future lighting for our roads and cities. See how bright you really are another page of this newsletter.

A solution is on Page 5 of this newsletter.

eastmunila
slagalte
slages
phatephoss
stalesiic
nastesant
sittanate

Reminder: Daylight Savings Time starts at 2 am Sunday, March 13th – spring ahead 1 hour! (This has been a public service announcement – Editor)

Upcoming Events

March 5 – WORK DAY at GMSS Clubhouse 10am – 2pm. See page 3 for details.

March 5-6—BELLEROSE, NEW YORK: Wholesale and retail show; New York Gems, Jewelry & Mineral Show Sponsored by the New York Mineralogical Club; The School of Fashion Industries Gym 3rd Floor, 225 West 24th Street; Sat. 10-6, Sun. 11-5; \$6, 12 Years & Under Free; The oldest gem jewelry & mineral show in New York City. Lots of favorite dealers. Retail and wholesale dealers. Door prizes. Free lectures by the New York Mineralogical Club; contact Mohamed Bary, 24448 89th Ave, Bellerose, NY 11426, (347) 247-6568; Email: barygems@gmail.com; Website: barygems.com

March 5-6—MERIDEN, CONNETICUT: Annual show; The Lapidary & Mineral Society of Central CT; Maloney High School, Gravel Street; Sat. 9:30-5, Sun. 10-4; \$5 adults; under 12 free; minerals, crystals, fossils, jewelry, and more; contact Tom Benedict; Email: tbenedict@ymail.com; Website: www.lmscc.org

March 5-6—WILMINGTON, DELAWARE: Annual show; Delaware Mineralogical Society, Inc; DoubleTree by Hilton, 4727 Concord Pike (Rt-202); Sat. 10-5, Sun. 11-5; Adults \$6, Seniors \$5, Juniors \$4, children under 12 and scouts in uniform free with adult; Mineral, lapidary and fossil exhibits. Displays from regional and university museums. Outstanding dealers. Quality specimen raffles. Free door raffle. Lapidary demonstrations. Children's booth where youngsters may

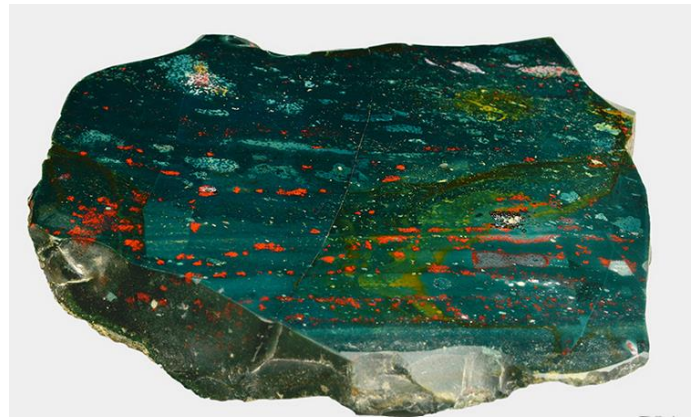
purchase inexpensive minerals and fossils; contact Elaine Kipp; Email: kippekip@hotmail.com; Website: www.DMSrocks.org - Note this is the new website.

March 11-12—RICHBORO, PA: Annual show; Leidy Microscopic Society; Advent Lutheran Church, 45 Worthington Mill Rd, 916 Senator Rd; Fri. 12-6, Sat. 9-6; \$25 half table / \$40 whole table for two days; 45th Annual Leidy Micromount Symposium - Micromount sales, Silent Auctions, Give-Away Tables, Speakers; contact Donald McAlarnen, 916 Senator Rd, East Norriton, PA 19403-4033, (610) 247-5097; Email: donmcalarnen@outlook.com; Website: <https://efmls.org/societies/leidy-microscopical-society/>

March 19-20 – HAMBURG, NEW YORK: "Fossils of New York" will be featured at the Buffalo Geological Society's 52nd Annual Gem, Mineral and Fossil Show at the Erie County Fairgrounds in the Grange, Market and New York State Police Buildings in Hamburg, NY. Demonstrators include fossil preparation, jewelry designers, other lapidary artists. In addition, over 30 dealers selling gems, beads, minerals, fossils, and jewelry items from around the world. Sat. 10-6, Sun. 10-5. Adults \$6, scouts in uniform and children under 12 are FREE. A 2-day admission for \$9 ea. also available. Door prizes are drawn hourly. FREE parking. Wheelchair and stroller accessible. For any additional information or questions, please contact Jerry Bastedo, Show Chairman, at jcbastedo@gmail.com. Website: <https://bgsny.org>

March 21 – GMSS meeting – 7:30 pm
Our speaker will be Calvin Prothro, Associate Professor of Geology and Planetary Sciences at Onondaga Community College.

March 22 –NYS Fair 2022 Show Committee meeting – 7 pm at the Clubhouse, led by Cheryl Brown.



Bloodstone slab from Asia

March 25-27—HICKORY, NORTH CAROLINA: Annual show; Catawba Valley Gem & Mineral Club, Inc.; Hickory Metro Convention Center, 1960 13th Ave Drive, SE, 5254 Olde School Drive; Fri. 10-6, Sat. 10-6, Sun. 10-5; Admission is \$5.00 good for all three days. Children 12 and under free. Law enforcement active or retired military with credentials, scouts and leaders in uniform free; 28+ vendors selling a variety of gems, minerals, fossils and jewelry; contact Dean Russell, 5254 Olde School Drive, Hickory, NC 28602, (828) 303-1448; Email: cvgmcsecretary@aol.com; Website: Dean Russell

A Reminder For 2022
The Buffalo Geological Society, Inc.
Presents Our 52nd Annual
GEM MINERAL FOSSIL SHOW

FOSSILS OF NEW YORK

Sat., March 19, 2022 · 10am-6pm
Sun., March 20, 2022 · 10am-5pm

Admission \$6 · 2 Days \$9
CHILDREN 12 YRS & UNDER FREE
 Demonstrations · Jewelry · Mini-Mine for Children
 Exhibits · Dealers with Minerals and Fossils

FREE PARKING **Plus DRAWINGS & REFRESHMENTS** **FAMILY FUN**

A GREAT FIELD TRIP FOR THE FAMILY
 & a real learning experience
 This card is NOT a ticket for admission.

Meet us at
"The Fairgrounds"

THE FAIRGROUNDS
IN HAMBURG
Market, Grange
& State Police Buildings
Hamburg, NY

Please use
 South Park Ave. Entrance



Gem Mineral Fossil Show Sponsored by the
 Buffalo Geological Society, Inc.
 www.bgsny.org
 An affiliate of the Buffalo Museum of Science.
 Member Eastern Federation of Mineralogical
 & Lapidary Society. Not-for-profit 501c3.



Please use the South Park
 entrance to the Fairgrounds.

FREE PARKING

FAMILY FUN

March 26-27—PLYMOUTH MEETING, PENNSYLVANIA: Annual show; Philadelphia Mineralogical Society and Delaware Valley Paleontological Society; Plymouth Meeting, Pennsylvania, 5140 Butler Pike; Sat. 10-5, Sun. 10-4; \$7.00 adults, \$2.00 kids 12 & under. All uniformed scouts are free; Mineral Treasures and Fossil Fair. Demonstrations by the Leidy Microscopical Society. Fossils, minerals, gems, speakers and exhibits ; contact Douglas M Klieger, PA; Email: dklieger@verizon.net; Website: www.philamineralsociety.org

March 26-27—WYSOX, PENNSYLVANIA: Annual show; Che-Hanna Rock & Mineral Club; Wysox Volunteer Fire Co. Social Hall, 111 Lake Road; Sat. 9-5, Sun. 10-4; Adults - \$3, Students \$1, under 8 free; Special exhibit from Susquehanna River Archaeological Center. Member exhibits. Kids activities. Dealers selling minerals, gems, fossils, jewelry and lapidary. Door prizes; contact Bob McGuire, PO Box 224, Lopez, PA 18628, (570) 928-9238; Email: uvbob1942@gmail.com; Website: www.chehannarocks.com

March 26-27—CHICOPEE, MASSACHUSETTS: Annual show; Western Mass Mineral, Jewelry & Fossil Show sponsored by the Connecticut Valley Mineral Club; Castle of Knights Meeting and Banquet House, 1599 Memorial Dr.; Sat. 9:30-5, Sun. 9:30-3:30; Admission \$5; 12 and under free with paid adult; Scouts in uniform free; New location, free parking, free mineral specimens for children, door prize drawing, postcard drawing, a non-profit educational organization ; contact Barbara Meyer, CVMC Show Co-Chairperson, 17 Shadowbrook Estates, South Hadley, MA 01075, (978) 394-3144; Email: bimeyer56@yahoo.com; Website: <https://cvmineralclub.org>

April 1 - Ace of Diamonds Mine & Campgrounds Opening Day. 84 Herkimer St, Middleville, NY 315-891-3855; herkimerdiamonds.com.

April 2-3—Johnson City, New York: Annual show; New York Southern Tier Geology Club; Johnson City Senior Center, 30 Brocton St; Sat. 9-5, Sun. 10-4; Admission is Adults \$4.00- with coupon \$3.50 Children under 12 free; This will be our 52nd annual show. It will feature exhibits, ultraviolet display, flint knapping, minerals and fossils plus beads, jewelry, gemstones, and beading supplies. There will also be door prizes a silent auction, plus food and drinks will be available for sale; contact Thomas Ogden, 96 West Main St, Bainbridge, NY 13733, (607) 967-8552; Email: stonecuttermom@yahoo.com

APRIL 5 - GMSS Board meeting - 7 pm at the Clubhouse. All are invited.

April 15 - Herkimer Diamond Mines & KOA Resort Opening Day. 4601/4626 State Rt 28, Herkimer, NY. 315-891-3099/315-891-7355; herkimerdiamond.com.

April 15 & 22 - Crystal Grove Diamond Mine & Campground Opening Day, camping. 161 County Rd 114, St Johnsville, NY. 518-568-2914; crystalgrove.com.

April 18 - GMSS meeting - 7:30 pm
 Our semi-annual auction is back! Will our auctioneer John Sweeney be back as well? Stay tuned for further developments.

April 23 - Onondaga Free Library - Geology Day - Dave Millis will have a program for kids: "Mineral Identification" at 10 am, and for adults: "Mineral Potpourri" at 2 pm. Registration required. info@oflibrary.org; 315-492-1727.

April 26 -NYS Fair 2022 Show Committee meeting - 7 pm at the Clubhouse, led by Cheryl Brown.

MAY 7 - Field Trip! - with Dave Arcaro, and Dave Millis (with his group from PA) to Deep Springs Road in Madison County, between Lebanon, Hamilton and Earlville. Plenty of fossils to find! Stay tuned for more information.

Answers to Geo Lexis

eastmunila	aluminates
slagalte	gallates
slagses	glasses
phatephoss	phosphates
stalesiic	silicates
nastesant	stannates
sittanate	titanates

Sources and further reading:

wikipedia.org/wiki/salt

Philip Jo *Will glow-in-the-dark materials someday light our cities?* (knowablemagazine.org)
By Kurt Kleiner 11/11/2021

<https://www.sustainability-times.com/clean-cities/a-sun-powered-bicycle-path-glow-in-the-dark-in-poland/> By Daniel t Cross 4/15/19

<http://www.webexhibits.org/daylightsaving/franklin.html>

<https://spectrumlocalnews.com/nc/charlotte/weather/2021/02/24/why-daylight-saving-time-#>

**Prof. Robert Darling –
“Microscopic Blue Sapphires from
the Western Adirondacks”**

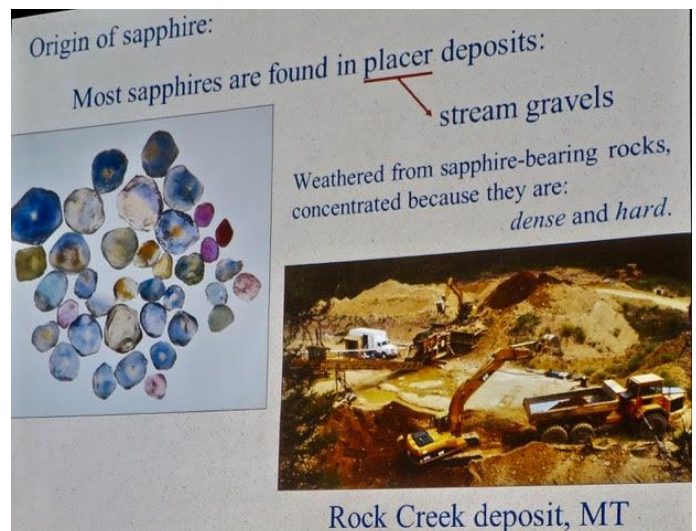
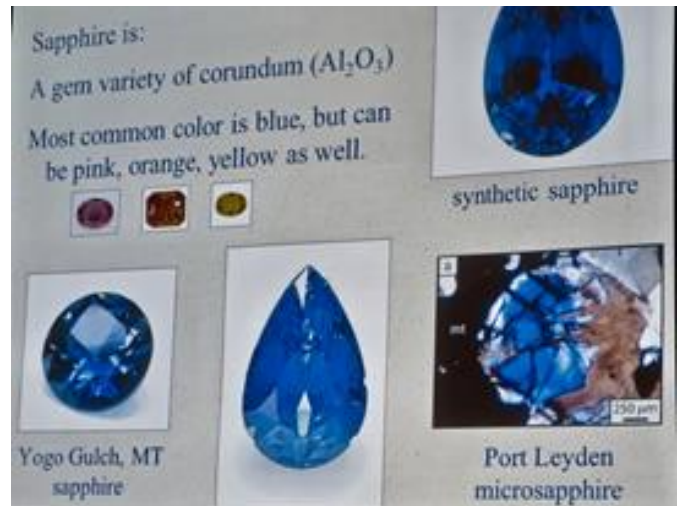
**February 21, 2022 Meeting
Photos by Judy Cook**



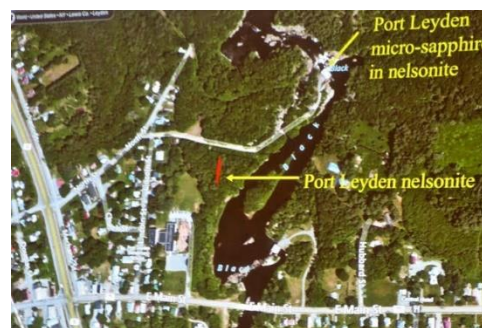
Professor Robert Darling provided an excellent and scholarly presentation to an attentive and full house at our February meeting. He is the Distinguished Teaching Professor of Geology at SUNY Cortland and has had numerous journal

and guidebook articles and abstracts published. This program was published as an article in the journal *Minerals* in October 2019.

Here is a summary of that article as well as Professor Darling’s program.

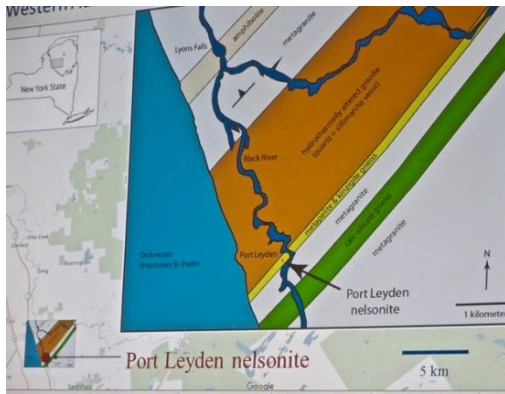


From the Abstract: “Microscopic, non-gem quality grains of blue sapphire (a variety of corundum) have been identified in a small discontinuous dike of nelsonite hosted by aluminous feldspathic gneiss... excavated during the construction of a hydroelectric plant on the Black River at Port Leyden, NY.”



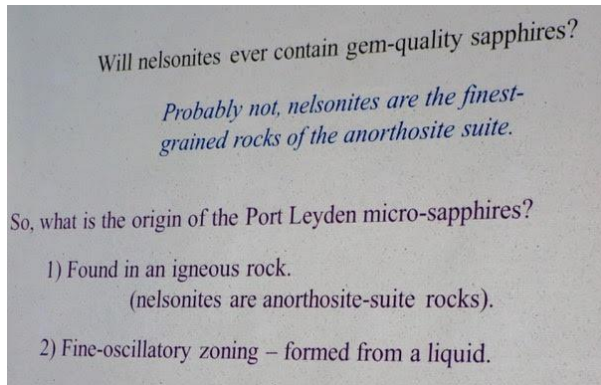
Port Leyden is a small village of about 650 people, located on NYS Route 12 in Lewis County that used to be a port on the Black River Canal. It’s about 75 miles northeast of the GMSS Clubhouse.

Nelsonite is an igneous rock primarily composed of ilmenite and apatite. Ilmenite (FeTiO₃) is a black metallic and slightly magnetic material, and apatite (Ca₅(PO₄)₃(F,Cl,OH)) is a light-colored, non-metallic mineral with small amounts of rutile throughout. Nelsonite is the first official state rock of Virginia, and was named for Nelson County, VA. At one time, nelsonite was mined for the extraction of titanium, used in paint pigments and for steel alloys; and calcium phosphate, used as agriculture fertilizer and as filler for artificial teeth.



From the article: "Gem corundum deposits world-wide are generally associated with quartz-free rocks of both igneous and

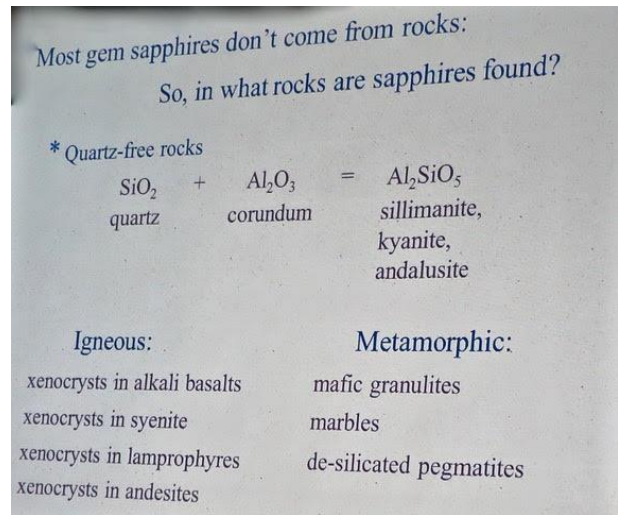
metamorphic origin...Here, we report a new type of occurrence of strongly blue-colored, microscopic, corundum (blue sapphire) from a small nelsonite dike hosted by aluminous gneiss in the Adirondack Highlands of New York State. Nelsonites are unusual iron-titanium-phosphorous rich igneous rocks noted for their high concentration of titanium...to our knowledge, this is the first description of sapphire from a nelsonite."



"The microscopic sapphires... are not gem quality because they are too small, and too highly fractured for even the smallest gem material. Yet, their presence in a nelsonite dike represents a previously unreported type of occurrence."

The aluminous gneiss is from the Middle Proterozoic (1.4 - 1.1 billion years ago) rocks of the Adirondacks, formed during the Ottawa phase of the Grenville orogenic (mountain building) cycle, which lasted from about 1090 - 1020 million years ago.

The Port Leyden nelsonite is a fine-grained, phaneritic (coarse-crystalled igneous rock), magnetite + apatite + ilmenite + pyrite + monazite + zircon igneous rock with lesser quantities of garnet +/- secondary chlorite."



"Although two lines of petrologic evidence supports an igneous/magmatic origin, it is important to note that the host rock of the sapphire-bearing nelsonite dike is sillimanite-bearing (i.e., highly aluminous) and thus a metamorphic or anatexitic (partial melting of rock) origin of the sapphires cannot be ruled out. However, the elevated chromium abundances are inconsistent with this model."



This rock sample contains a 2-cm wide nelsonite dike (left of center) with microscopic sapphires. The sample is a medium-grained, plagioclase + biotite + microperthite + garnet + quartz + sillimanite +/- hercynite gneiss. Thin sections are now part of the permanent collection of the New York State Museum in Albany.



Gem and Mineral Society of Syracuse
P.O. Box 2801
Syracuse, NY 13220
First Class Mail

Time Dated Material



www.amfed.org www.amfed.org/efmls [Future Rockhounds](#)

Eight people organized the Gem and Mineral Society of Syracuse in 1951. Since that time it has grown in membership to include adults, families, and young folk. The Society was incorporated in 1969 under the same name.

The objectives of the Society are to stimulate interest in mineralogy, paleontology, and the lapidary arts. Member interests include collecting, identification, and display of minerals, gems, fossils. Members share and develop their artistic skills in jewelry design and creation.

Our monthly meetings provide social and educational experiences. Field trips give collectors chances to find specimens and enjoy the out of doors, exercise and time with old and new friends.

Meetings - 3rd Monday of the month

Future Rockhounds @ 6:30 - General Meeting @ 7:30

(NO Meetings Jul, Aug, Dec)

209 Oswego St (Ponderosa Plaza) Unit 14 & 15, Liverpool, NY

Visitors are ALWAYS welcome!

See online Newsletter <http://gmss.us/resources/newsletter>

You can also visit our facebook and flickr pages

Annual member dues

Adult \$10 • Family/Couple \$15 • Junior \$5 • Life \$5

If you would like to join or renew membership download the application form (PDF), see <http://gmss.us/about/membershipform.pdf> You can get a form at a meeting or send requests to **GMSS, PO Box 2801, Syracuse, NY 13220** We will mail an application/renewal form to you.

2021 – 2022 GMSS Officers/Contacts

-President: Dick Lyons 315-672-5328
 pres@syracusegemsociety.com

-Vice-President: Kris Boronczyk 315-487-5202
 vp@syracusegemsociety.com

-Treasurer: Mary Davis 315-885-4416
 treasurergmss@yahoo.com

-Secretary: Charlie Brown
 secretary@syracusegemsociety.com

-Jr Rockhounds:
 Rick Moore kidsrock@syracusegemsociety.com

-Membership Chair: members@syracusegemsociety.com

-Sgt at Arms: John Sweeney
 sgtatarms@syracusegemsociety.com

-GemWorld Show Chair: Cheryl Brown 315-708-9122
 show@syracusegemsociety.com

-Club Librarian: Steve Albro 607-756-2298
 library@syracusegemsociety.com

-Lapidary Committee Contact: Steve Shorey
 lapidary@syracusegemsociety.com

-Newsletter: Larry Petry 315-472-9226
 editorgmss@gmail.com

-Website: Dana Schwartz
 webmaster@syracusegemsociety.com

-Facebook: Judy Cook
 socialmedia@syracusegemsociety.com

-Photographers Extraordinaire: Judy Cook, Steve Albro

-Hospitality Committee Chair: Mary Davis
 315-885-4416 hospitality@syracusegemsociety.com