

# CRACK 'N CAB



Gem & Mineral Society of Syracuse, PO Box 2801, Syracuse, NY  
web <https://www.syracusegemsociety.com> Volume 52 Issue 5, **May 2022**  
209 Oswego St (Ponderosa Plaza), Unit 15, Liverpool, NY

**It's Two Months to Go Til Our Gemworld Show  
Be at the Meeting So You'll Have All You Need to Know!**

**Monday, May 16, 7:30 pm at the Clubhouse**



Spring Auction Photos

See Page 7

**John Kolodzie Memoriam**

See Page 4



See What's There

Page 8



**More Show Display Cases Ideas -  
See Pg 5**

## President's Message

Dick Lyons



Our May informational meeting will be for all members who will be participating at our July show. We will give you what is involved in each volunteer area. For those of you interested, there will be instruction as to how to set up a display of minerals, jewelry, or both. There will be sign-up sheets for each volunteer area.

The next Show Committee meeting will be on May 24th. As of this week, 53 retail dealers, including three dealer/demonstrators, have returned their completed contracts. Once again, **we need all of you to help** make this show a success. The income from this event pays for the expenses of our clubhouse including rent.

Our June meeting will include the voting of the officers for the coming fiscal year. Please consider volunteering for one of these positions in the future. I believe that straws will be filled for the club booth Straw Draw. Once again, ice cream will be provided.

Please let Kris Boronczyk know if you have any interest in joining us to the previously suggested field trips for this year. Do you have any locations where you have visited in the past and would like to go there again?

Dick Lyons

## Secretary's Reports

Charlie Brown

### Work Day, 4-9-22

After our April Executive Board meeting on Tuesday, a club Work Day was held on Saturday from 10 A.M. to 2 P.M. Some who arrived late, opted to stay later into the afternoon to continue working. The time was used to identify, sort, label, organize, and box rock from our donated rock collections and other sources for four purposes:

- 1) samples to be auctioned at our upcoming April 18th bi-annual auction.
- 2) samples set aside to be used in filling our meeting room display cabinets.
- 3) samples set aside to be offered for purchase at our *Hourly Silent Auctions* both days of our Annual Show this July 9 & 10th.
- 4) samples deemed 'leaverite' to be disposed of as land or lake fill.

Processing the contents of storage room 'A' in our Workshop Area is being done to permit elimination of the storage area. The additional open space will be used for seating at Junior Rockhound meetings and for space for additional workshop equipment.

### Monthly Member Meeting, 4-18-22

While our Work Day was productive on April 9th, John and Linda Sweeney put additional time in on Tuesday, Wednesday, and Friday processing rock and organizing the auction lots in addition to setting-up the meeting room with tables and chairs for the auction Monday night.

- John and Linda had some help from Kris and Linda Boronczyk and Cathy Patterson.

- John did a SPECTACULAR job as auctioneer Monday night. He was amazing in what he did in his role (talk, patter, jokes, quips, information, humor, etc.). He took no break, was never relieved, and had Mark Grasmeyer, Matt Klinger, and one young'un delivering things to winning bidders.

- While some of the items auctioned came from club members, some 60 lots were of donated club materials!

- The auction was FAST paced. It started promptly at 7 PM and end-of-meeting announcements after the auction were finished minutes after 9 PM!

- John moved a lot of 'stuff'!

### Show Committee Meeting, 4-26-22

Discussion of a work team to check and service display cases at our storage facility. Display Case Work Day scheduled for April 23rd with a rain day alternative of April 30th. Matt, Mark, Charlie, & John to assist Keith. Charlie to check electrical outlet availability on site and let John know.

Discussion of role of Show Committee Chairpersons at May General Meeting.

(Continued on next page)

Discussion of demonstration of display case set-up and presentation techniques at May General Meeting.

Discussion of publicity venues to be pursued.

General discussion about Club Booth, Youth Area set-up, Welcome Committee, Ticket Sales and Bracelets, and the Rock ID table.

### **Executive Board Meeting, 5-3-22**

The meeting was called to order by President Dick Lyons. Sgt. at Arms John Sweeney, Nominations Committee chairperson Keith Gilmer and Webmaster Dana Schwartz were not in attendance.

It was reported that the **Nominating Committee** has candidates for all offices. Keith's list of candidates is posted elsewhere in this newsletter. **Additional candidates' names may be added at the May General Meeting. This will allow the required publication of all candidates' names in the June newsletter.**

Discussion was held regarding the need for rescheduling a display case workday and another day to further identify rock samples for the *Hourly Silent Auctions* at this year's annual Gem Show. No decision was reached on a meeting date for either of these topics in part because Keith and John were not with us.

President Lyons gave an update on our upcoming July show. We now have 51 retail and 4 wholesale vendors. The next show committee meeting will be held on May 24th.

Our **May General Meeting** will be dedicated to:

- 1) providing an overview to members of the July Show by show committee chairpersons
  - What the committees' responsibilities are related to the Show
  - Individual's roles within each committee
  - Staffing needs for each committee's tasks
  - Committee sign-up sheets
- 2) The mechanics of setting-up a display case for the show and a step-by-step demonstration of exactly how to do a display with suggestions of options and variations for individuality.

Materials needed for our Show's Youth Area activities need to be ordered this month. Rick and Charlie will do an inventory of materials in storage off site later this week.

Discussion took place regarding website concerns pertaining to lack of updating of meeting information and website design.

Respectfully submitted,  
Charlie Brown

## **2022 GMSS Board Nominations (to Date)**

**President:** Kris Boronczyk

**Vice President:** John Sweeney

**Treasurer:** Linda Clark, Bill Verge

**Secretary:** Skylar Haas

**Sgt-At-Arms:** Charlie Brown, Cathy Patterson

## **2022 GMSS Board Nominations Cathy Patterson**

I am Cathy Patterson and I have been a member of the Gem and Mineral Society of Syracuse, Inc. for over 30 years. I have served as newsletter editor, as well as Secretary, President and Show Chairman on the Board. A few years back I assisted the club Historian, Carrie Gannett (deceased) in organizing club historical records. I continue to do this job. I have also served as Secretary for The Eastern Federation of Mineralogical Societies (EFMLS). Being a member of the GMSS and serving in an executive capacity is something I have loved. I have attended most Board meetings since COVID and my return to Syracuse from 10 years living winters in Florida. My husband, Loren, and I have returned to Central New York as of 2019 living permanently in Baldwinsville.

### **Constitution and Bylaws of the Gem and Mineral Society of Syracuse, Inc. 2019 Section 6 Sergeant-At-Arms – duties**

- A. Shall assist in preserving order on the floor of the meeting hall as the chair may direct; and
- B. Shall arrange (and later restore) the furniture and fixtures of the meeting room to accommodate the assembly meetings;
- C. Shall be responsible for inventorying all Society property at the beginning of the term and will report at the Annual Meeting of any discrepancies in inventory, as well as the additions and retirement of property during the term.

I would love to serve the 2-year term on the Board as Sergeant-At-Arms. I will ask for your vote at the June meeting.

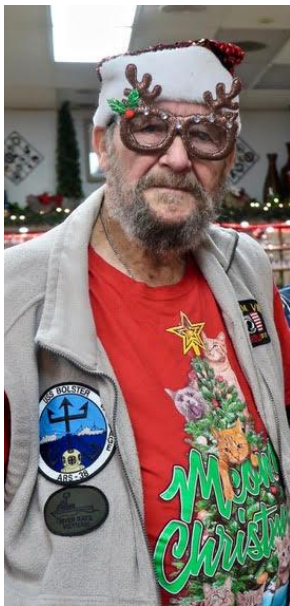
## In Memoriam -- John Kolodzie, Jr

1942 - 2022

John Kolodzie, Jr., 80, of Liverpool, passed away on Monday, April 25th surrounded by his immediate family. John graduated from West Genesee High School in 1960. He served in the U.S. Navy and U.S. Coast Guard for many years including both the Korean Conflict and Vietnam. John was a member of the American Legion Post 787 in Cicero and Life Member of Gem and Mineral Society of Syracuse.

Services are invite only.

John and Janet would dress up every holiday party in grand style, it was a holiday tradition to see them decked out. Then he had the most awesome and unusual canes and walking sticks. – Judy Cook (photos by Judy)



## Show Committee Plea

Cathy Patterson

I have agreed to take on the role of **Club Booth** Chairman for the 2022 annual show in July. It has been a few years since my husband, Loren, and I ran the booth before Sharon Viel (deceased) did her marvelous job commanding the most important, in my opinion, area of the show. *I sincerely ask for as much help and as many volunteers as possible this year working at the booth.*

I, unlike Sharon, cannot be present all day Saturday and Sunday at the Club Booth. My husband is disabled and cannot stay in the booth area for hours at a time. We live just up the road on Rte 690, so it is a quick drive home and back if need be. I am creating a **How To Run The Club Booth manual** I will make available to anyone who wants a copy.

There were excellent helpers running the club booth in 2021 and before. I count on them and our new members for your help. It is an excellent way to get to know how the club works, get to know other club members, and be on the leading edge of all the action. *I ask for 2 hours of your time on both days if possible.* Please sign up to work at the Club Booth. I know we can do this together!

### Gemworld Show Needs Small Samples

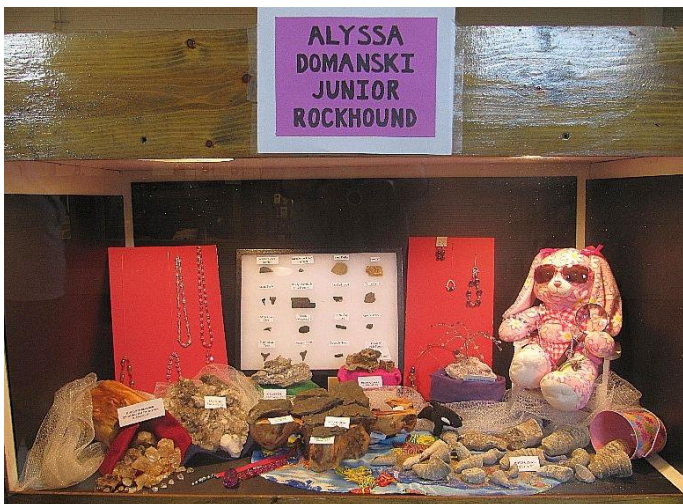
The **Youth Area** is in need of small (about 1") specimens of fossils, shark's teeth, rocks and minerals that are distinguishable for use in the sluice bag preparation. So, if you have small items that you don't need, don't love anymore, are duplicates, need to be thinned out, have been told to get rid of, **please bring them to the May or June meetings.** You can give them to Rick Moore or Mairead O'Neil and get more information from them.

## The Joy and Importance of Show Exhibitions

By Keith Gilmer

Collecting is part of the reason that brings us together; but exhibiting what we have acquired and sharing that experience with friends, family, and often total strangers extends our experiences to all those who wish to learn and understand. Our collection[s] may enrich us, but our exhibition[s] enrich everyone who sees and experiences them. So please consider an exhibit in the annual show. Share your passion for the hobby with others and they too may find that passion within themselves. Thanks.

The following are some (more) examples of club members' show exhibits.



**Geo Lexis (Puzzle)  
By Anne Fitzgerald**

### "The Man Who Brought Me Treasure"

One day, at the show, while working the kids' area, a man stopped by and dropped a bracelet in my hand. Before I could inquire or thank him, he was on to the next booth, dropping treasure, moving quickly as if to escape gratitude.

I saw him at our meetings. He was quiet and humble. Although there was a high price to pay, I am guessing he never felt the need to wear his nametag. And so, I never knew his name until I saw Bob Livingston's tribute, and the picture of John Baumler in the April newsletter.

The universe drops treasure like John upon us in many forms. One of those forms is plasma. Some scientists are still debating how to describe plasma. Some call plasma a "soup of electrons and ions." Some more dramatic scientists call plasma the "Fourth State of Matter." Although scientists can't really agree on how to describe it, they can still create plasma. Research suggests plasma can help plants grow and can help with soil remediation. At least we can agree on its usefulness.

Unscramble the following to discover the different forms that plasma can take. If nothing strikes you, the solution can be found on Page 7 of this newsletter.

- gilhitng
- raeauro
- ralos dwin
- dweling racs
- srats
- stemco
- phonorisee

## Upcoming Events

**MAY 7 – Field Trip!** – with **Dave Arcaro, and Dave Millis** (with his group from PA) to Deep Springs Road in Madison County, between Lebanon, Hamilton and Earlville. Plenty of fossils to find: brachiopods, cephalopods, crinoids, gastropods! Meet at Clubhouse at 8 AM. Call Dave Arcaro 315-935-3627 for reservations, questions.

**14-15—NORTH OLMSTED, OHIO:** Annual show; Parma Lapidary Club; Soccer Sportsplex, 31515 Lorain Ave, 1012 Chippewa St; Sat. 10-6, Sun. 10-5; Adults \$6, under 12 and scouts in uniform when accompanied by an adult Free; Door prizes, Live demos, Exhibits; contact Marty Lamparyk, (440) 567-6731; Email: [jmlampa@gmail.com](mailto:jmlampa@gmail.com)

**May 16 – GMSS meeting – 7:30 pm**  
We'll have a Pre-Work Night for our July Show - a demonstration of a display case setup, various job descriptions of volunteer positions, FAQs, signup sheets, and maybe snacks, too!

**May 21-22—BENNINGTON, VT:** Annual show; Southwestern Vermont Mineral & Gem Club; Grace Christian School, Kocher Drive; Sat. 10-5, Sun. 10-3; Adults \$5. Kids Free; Quality vendors selling minerals, fossils, polished items, fine custom-made jewelry using natural gems, books; contact Bill Cotrofeld, (802) 233-1339; Email: [cotrofeldauto@comcast.net](mailto:cotrofeldauto@comcast.net)

**May 24 – NYS Fair 2022 Show Committee meeting – 7 pm at the Clubhouse, led by Cheryl Brown**

**June 3-5—WAUSEON, OHIO:** Annual show; State Line Gem & Mineral Society; Fulton County Fairgrounds, 8514 SR 108, Wauseon, OH, Fulton County Fairgrounds; Fri. 12-6, Sat. 10-6, Sun. 11-4; Admission is \$4.00 for Adults, \$3.00 for Seniors 60 & older and Students, 12 and Under Free; Come join us at the Fulton County Fairgrounds Junior Fair Building in Wauseon, OH for our 61st Annual Show. ; contact Sherm Kardatzke, (517) 673-5487; Email: [sakardatzke@gmail.com](mailto:sakardatzke@gmail.com); Website: [statelinegms.com](http://statelinegms.com)

**June 4-5—WEST FRIENDSHIP, MD:** Wholesale and retail show; Mid-Atlantic Gem and Mineral Assoc. LLC; Howard County Fairgrounds, 2210 Fairgrounds Road; Sat. 10-5, Sun. 10-4; \$6 - with online discount; Show features gems, minerals, beads, jewelry and craft items. An outdoor tailgate section where vendors have rough material and unique presentations. Hourly and grand prize drawings; contact Teresa Soltis Schwab, (301) 807-9745; Email: [beadware@rcn.com](mailto:beadware@rcn.com); Website: [www.gem-show.com](http://www.gem-show.com)

## Wayne County Gem & Mineral Club

We're  
back!

# Gem Fest 2022



Sat. June 4 10-5  
Sun. June 5 10-4

Greater Canandaigua Civic Center  
250 N. Bloomfield Rd, Canandaigua, NY

\$4 Admission, Kids 12 & under FREE

Soapstone Carving, Wire Wrapping, Sluice, Vendors, Exhibits, Free Prizes, Scavenger Hunt, Rock painting, Jerry's Dinosaur, our famous Rock Grab bags, and much more

Gems, Minerals, Fossils, Beads & Jewelry

visit <http://www.wcgmc.org/> for details

**JUNE 7 – GMSS Board meeting – 7 pm**  
at the Clubhouse. All are invited.

**June 11—KENT, CT:** Show; Danbury Mineralogical Society and Connecticut Museum of Mining and Mineral Science; Connecticut Museum Of Mining and Mineral Science, 31 Kent - Cornwall Road; Sat. 9-4; Free; contact John Pawloski, P.O. Box 425, Kent, CT 06757, (860) 927-0050; Email: [j.a.pawloski@att.net](mailto:j.a.pawloski@att.net); Website: [www.ctamachinery.com](http://www.ctamachinery.com)

**June 11-12—MANSFIELD, OHIO:** Annual show; Mid-Ohio Mineral & Fossil Club; Richland County Fairgrounds, Fair Haven Hall, 750 North Home Rd; Sat. 10-6, Sun. 11-5; \$5 adults, senior citizens over 60 and children 12 and up \$4 children under 12 \$3 scouts in uniform free; Show theme "native copper and copper minerals"; contact Tom Kottyan, (419) 561-3595; Email: [themineralhouse@netzero.net](mailto:themineralhouse@netzero.net); Website: [rrls.webs.com](http://rrls.webs.com)

**June 11-12—GASTONIA, NC:** Annual show; Gaston Gem, Mineral and Faceters Club; Johan Newcombe Event Center/Habitat for Humanity Bldg, 1840 E. Franklin Blvd; Sat. 10-6, Sun. 10-4; Free; Minerals, fossils, gemstones, jewelry. Sluice on site with salted treasure buckets (\$5,\$10). Vendors offering the best in lapidary rough, mineral specimens and so much more. Current Covid-19 precautions will be followed; contact Robert Winstanley, (704) 577-3391; Email: [machine66man@gmail.com](mailto:machine66man@gmail.com); Website: [gastongemclub.weebly.com](http://gastongemclub.weebly.com)

**June 18—NEWTON, MASS:** Mineral Specimen Auction; Boston Mineral Club; American Legion Nonantum Post 440, 295 California St; Sat. 9-5; Free; Voice auction and silent auction of

mineral specimens in a wide price range, along with gemstones, lapidary rough, jewelry, equipment, books, magazines, and more; contact Mike Haritos, (857) 991-2294; Email: mharitos@comcast.net; Website: [www.bostonmineralclub.org](http://www.bostonmineralclub.org)

**June 20 – GMSS meeting – 7:30 pm**

Voting for 2022 – 2023 Officers. It’s also Work Night for our July Show – fill up those straws, and any other tasks that need to be done before the Show. And maybe ice cream, too!

**July 9-10—SYRACUSE, NY:** Annual show; Gem & Mineral Society of Syracuse, Inc; Center of Progress Building at the New York State Fairgrounds, 575 State Fair Blvd; Sat. 10-6, Sun. 10-4; \$7 Adults, Free for children under 12 & scouts in uniform with paid adult admission; More than 60 retail and wholesale dealers, several demonstrators, displays, and activities for children. You can pick out a geode and watch the dealer crack it. Vendors will be selling minerals, fossils, crystals, jewelry, beads, cabs, and jewelry making supplies; contact Cheryl Brown, Email: [show@syracusegemsociety.com](mailto:show@syracusegemsociety.com); Website: [www.syracusegemsociety.com](http://www.syracusegemsociety.com)

**Answers to Geo Lexis**

- |              |              |
|--------------|--------------|
| gilhitng     | lightning    |
| raeauro      | aurorae      |
| ralos dwin   | solar wind   |
| dweling racs | welding arcs |
| srats        | stars        |
| stemco       | comets       |
| phonorisee   | ionosphere   |

Sources and further reading:

<https://www.sciencenews.org/article/cold-plasma-agriculture-sustainable-farms-fertilizer>

Helmenstine, Anne Marie, Ph.D.

"Learn How to Identify Plasma With These Examples." ThoughtCo, Aug. 25, 2020, [thoughtco.com/examples-of-plasma-608335](https://www.thoughtco.com/examples-of-plasma-608335).

<https://www.thoughtco.com/examples-of-plasma-608335>

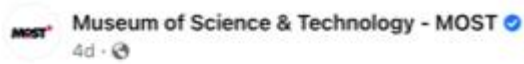
**April 18, 2022 Meeting - Spring Auction  
Photos by Judy Cook**

Our official auctioneer, John Sweeney, moved the Spring Auction right along. Bids came fast and furious for various and sundry lots of accumulated Club stuff and donated items. There were rocks, fossils, crystals, jewelry, slabs, accessories – you name it, from New York State and elsewhere. And he finished by 9 pm! Nice job, John.



How many of these people are actually working?

## Look What's at The MOST!



NOW OPEN: The Philip Cooper Hewitt Gem & Mineral Gallery

Glowing minerals, sparkling gems, and colorful crystals await you in the new Gem and Mineral Gallery at the MOST!

Featuring classic favorites and curated selections from the MOST collection never before displayed, this immersive gallery introduces visitors to mineralogy and geology through explorations of mineral properties, fossil records, and more.

Discover the secrets of Earth's geologic past and visions of its future on display now at the MOST!

This exhibit is FREE with admission and is open during regular hours.

Thank you to sponsor: [Cazenovia Jewelry](#)



Named contributors are John Duggan, John Davis, Gene Ridall, and Len & Susan Sharp.

## And In the News...

### Oldest evidence of tectonic plates unearthed, sealed in ancient crystals

By [Tia Ghose](#) published April 30, 2022 [livescience.com](#)

Tiny crystals unearthed in South Africa contain evidence of a sudden transition on the planet's surface 3.8 billion years ago. These crystals, each no bigger than a grain of sand, show that around that time, Earth's crust broke up and began moving — a precursor to the process known as plate tectonics.

In 2018, Nadja Drabon, a professor of Earth and planetary sciences at Harvard University, and her colleagues discovered zircon crystals in South Africa's Green Sandstone Bed, in the Barberton Greenstone mountain range. The team found 33 zircons, ranging in age between 4.1 billion and 3.3 billion years old.

In the isotopes, the scientists found evidence of a sudden transition to primitive plate tectonics dating to around 3.8 billion years ago. That finding suggests that by that time, in at least one place on the planet, a simple form of subduction had begun. The new study hints that Earth's molten lava ocean existed for at most a few hundred million years before the solid crust formed, she added.

### In Norway, Melting Ice Reveals Ancient History Global warming is helping archaeologists write a new chapter about mountain wilderness

By [Mike L. Ford](#), [Newser Staff](#) Posted Apr 30, 2022 3:25 PM CDT

([NEWSER](#)) – In 2019, a Norwegian mountaineer stumbled across a soggy, twisted blob of leather on a patch of ice. Before continuing, he reported the find to archaeologists with Secrets of the Ice, a project that researches ancient trade routes exposed in recent decades by melting icepack. “He sent us GPS coordinates and photos, and left the discovery in the ice. Well done,” Espen Finstad, the project’s co-director, tells Live Science. Afraid an oncoming snowstorm might bury the find again, archaeologists hustled to the location and found what turned out to be an intact 1,500-year-old rawhide shoe.

*One good thing about global warming, ya, you bechya!*

### Paleontologists dismayed after 112-million-year-old dinosaur footprints were damaged by botched construction job

[Paola Rosa-Aquino](#) April 12, 2022 [news.yahoo.com](#)

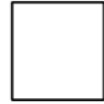
A section of fragile dinosaur footprints dating back 112 million years was damaged beyond repair by heavy machinery at the Mill Canyon Dinosaur Tracksite in southeastern Utah. The historic site contains roughly 200 footprints from at least 10 different dinosaur species.

The Bureau of Land Management concluded that it failed to take necessary precautions prior to construction of a boardwalk.





**Gem & Mineral Society of Syracuse**  
**PO Box 2801**  
**Syracuse, New York 13220**  
**First Class Mail**  
**March 2018**  
 Time Dated Material



[www.amfed.org](http://www.amfed.org)   [www.amfed.org/efmls](http://www.amfed.org/efmls)   [Future Rockhounds](#)

Eight people organized the Gem and Mineral Society of Syracuse in 1951. Since that time it has grown in membership to include adults, families, and young folk. The Society was incorporated in 1969 under the same name.

The objectives of the Society are to stimulate interest in mineralogy, paleontology, and the lapidary arts. Member interests include collecting, identification, and display of minerals, gems, fossils. Members share and develop their artistic skills in jewelry design and creation.

Our monthly meetings provide social and educational experiences. Field trips give collectors chances to find specimens and enjoy the out of doors, exercise and time with old and new friends.

**Meetings - 3<sup>rd</sup> Monday of the month**  
**Future Rockhounds @ 6:30 - General Meeting @ 7:30**  
**(NO Meetings Jul, Aug, Dec)**  
**209 Oswego St (Ponderosa Plaza) Unit 14 & 15, Liverpool, NY**  
**Visitors are ALWAYS welcome!**

See online Newsletter <http://gmss.us/resources/newsletter>  
 You can also visit our facebook and flickr pages  
**Annual member dues**  
**Adult \$10 • Family/Couple \$15 • Junior \$5 • Life \$5**

If you would like to join or renew membership download the application form (PDF), see <http://gmss.us/about/membershipform.pdf> You can get a form at a meeting or send requests to **GMSS, PO Box 2801, Syracuse, NY 13220** We will mail an application/renewal form to you.

## 2021 – 2022 GMSS Officers/Contacts

**-President:** Dick Lyons 315-672-5328  
[pres@syracusegemsociety.com](mailto:pres@syracusegemsociety.com)

**-Vice-President:** Kris Boronczyk 315-487-5202  
[vp@syracusegemsociety.com](mailto:vp@syracusegemsociety.com)

**-Treasurer:** Mary Davis 315-885-4416  
[treasurergmss@yahoo.com](mailto:treasurergmss@yahoo.com)

**-Secretary:** Charlie Brown  
[secretary@syracusegemsociety.com](mailto:secretary@syracusegemsociety.com)

**-Jr Rockhounds:** Rick Moore  
[kidsrock@syracusegemsociety.com](mailto:kidsrock@syracusegemsociety.com)

**-Membership Chair:** [members@syracusegemsociety.com](mailto:members@syracusegemsociety.com)

**-Sgt at Arms:** John Sweeney  
[sgtatarms@syracusegemsociety.com](mailto:sgtatarms@syracusegemsociety.com)

**-GemWorld Show Chair:** Cheryl Brown 315-708-9122  
[show@syracusegem.com](mailto:show@syracusegem.com)

**-Club Librarian:** Steve Albro 607-756-2298  
[library@syracusegem.com](mailto:library@syracusegem.com)

**-Lapidary Committee Contact:** Steve Shorey  
[lapidary@syracusegem.com](mailto:lapidary@syracusegem.com)

**-Newsletter:** Larry Petry 315-472-9226  
[editorgmss@gmail.com](mailto:editorgmss@gmail.com)

**-Facebook:** Judy Cook  
[socialmedia@syracusegem.com](mailto:socialmedia@syracusegem.com)

**-Website:** Dana Schwartz  
[webmaster@syracusegem.com](mailto:webmaster@syracusegem.com)

**-Photographer Extraordinaire:** Judy Cook  
**-Hospitality Committee Chair:** Mary Davis  
 315-885-4416 [hospitality@syracusegem.com](mailto:hospitality@syracusegem.com)