

CRACK 'N CAB



Gem & Mineral Society of Syracuse, PO Box 2801, Syracuse, NY
web <https://www.syracusegemsociety.com> Volume 52 Issue 11, **November 2022**
209 Oswego St (Ponderosa Plaza), Unit 15, Liverpool, NY



ANNUAL FALL CLUB AUCTION

Monday, Nov. 21 – Doors
Will Open at 6:00 pm,
Auction Starts at **7:30** PM!
John Sweeney will be
our auctioneer!

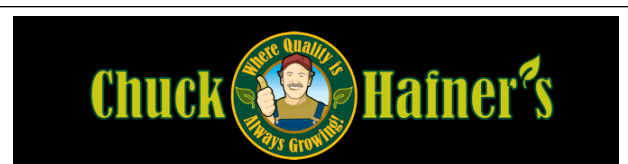
Please review the Auction Rules which are posted on Page 3 in this newsletter. If you are planning to bring something for the auction, there are a couple short forms you need to fill out beforehand. The doors to the clubhouse will be open by 6:00. Please come early to fill out the necessary paperwork.

October 17, 2022 Meeting
Photo Review- Pages 6 -8



Holiday Party

See Important Info. -
Page 4



Garden Center Fall Festival
Photo Review: See Pgs 9-13

What do your dues do?

See Bob Livingston's reminders

Page 13

President's Message

John Sweeney



Going once, going twice, sold. Yes, it's that time again. We are having our **fall auction this month**. Bring in specimens, tools, materials and hobby related items that you would like to pass on to someone else and maybe make a few dollars on as well. We'll be having the **regular silent auction and knowledge corners**

before the main event. Main Auction starts at 7:30 pm.

You might want to get in early to get your paperwork figured out if you have a lot of items to sell. We could use a few helpers and runners during the auction so see me the night of the auction if you'd like to help. **Auction rules are printed elsewhere in this newsletter (See Page 3).**

Speaking of **knowledge corners**, I'm looking for a few people to share their expertise on variety of subjects during these pre meeting mini talks. Talks about collecting, showing, buying, mineral id, storing and labeling and working with materials are all needed. Look for a sign-up sheet on the bulletin board.

The **Christmas party is next month**. We're a little late in getting sign up started as we will only all be together at this meeting before the party. So please **be ready to sign up at the meeting if you're going to the Christmas Party**. Some alternative sign-up methods and specifics on the party are listed further along in this newsletter (See Page 4). Don't forget your Toys for Tots and food donations.

The board is working on many different fronts to keep the club moving smoothly and efficiently. The **new web site** is almost up and running, **Matt Klinger** is making headway on **physical audit of our collections** and property. He could use some help if you are interested. **Cathy Patterson is soliciting ideas for fun and interesting programs and field trips**. **Larry Petry** our editor is keeping the presses rolling and is **looking for some up and coming or experienced writers who are interested in submitting articles to the "Crack 'N Cab"**. Check out **Judy Cook's work on Facebook** page if you're into social media. **Rick Moore is trying to build up our junior rockhound group**. **A new class is starting in the lapidary shop** thanks to Steve and Bill and the show committee is working hard. Larry our editor has put together a rather lengthy newsletter this month, so I'll end my musings here. I'm available at the meetings if you have any questions or need anything. Going once, going twice, gone. See you at the meeting.

Sincerely, John Sweeney

Secretary's Reports

Skylar Haas

Monthly Member Meeting – October 17, 2022

Our **first silent auction** of the year was held from 7 – 7:30 P.M., as well as our **first knowledge corner** with Dick Lyons and his expansive knowledge about petrified wood. If you are interested in volunteering for a knowledge corner, please contact John Sweeney to sign up!

Petrified Wood



Our very own multi-talented Editor – Larry Petry, after much anticipation, shared with the club his expertise on **"Minerals and Crystals on U.S. Stamps"**.

Editor – Larry Petry,
Webmistress – Amanda Lytle, and Sergeant at Arms – Matt Klinger, were all inducted as executive board members by Past President Dick Lyons.

We will start to open the doors during meetings to create cross ventilation in an effort to avoid spreading COVID. So please dress warm and BUNDLE UP! We will continue to have snacks. If you'd like to bring in snacks for the club, please contact John Sweeney or Mary Davis.

Our semi-annual auction will be held on November 21, 2022, during the General Meeting at 7 P.M.

The GMSS's Christmas Party will be at Bella Domani on December 11th from 12 P.M. – 4 P.M. Bring a gift to swap (no more than \$10). Also remember to bring food pantry and/or Toys for Tots items (unwrapped).

Sergeant at Arms Matt Klinger will begin **inventory** soon. He is looking for help, if you are interested in assisting him, please contact him to sign up.

Our **Lapidary Workshop is open on Saturdays from 1 – 4 P.M. for only \$5 a day!** Bill Vergé and Steve Shorey would love to teach you a new hobby or help you "polish" your skills.

GMSS will be attending (now attended) Chuck Hafner's Garden Center Festival on October 22nd and 23rd.

Executive Board Meeting – November 1, 2022

The meeting was called to order by President John Sweeney.

October's meeting minutes were discussed. President John Sweeney presented the board with a proposal to
(Continued on next page)

email minutes to all board member from this point forward for review and approval. Skylar Haas made a motion to approve the new process, Dick Lyons seconded the motion. All were in favor.

Matt Klinger made a motion to accept the October minutes. Cheryl Brown seconded. All were in favor.

President John Sweeney and Show Committee Chair Cheryl Brown reported that **Chuck Hafner's Garden Center Festival**, which the club attended on October 22nd and 23rd, was a success. Many membership applications were taken!

Vice President Cathy Patterson has been hard at work coordinating **programs** and coming up with **field trip ideas**. If you have any field trip ideas, please contact her.

Treasurer Linda Clark Sweeney reported a **budget** for this coming 2022-2023 year is still in progress. Once all treasury documents are transferred over to Linda Clark Sweeney for the term year 2021-2022, a year-end report and a budget will be created.

Webmistress Amanda Lytle reported that she is working on changing the domain name for the **new website**. There was discussion about this and the updates she has made to the new site.

Judy Cook reports that Facebook is going well. She posted about Chuck Hafner's Garden Center Festival which GMSS attended on October 22nd and 23rd.

Bill Vergé reported that they have one person signed up for the **new lapidary class** that begins Saturday, November 5th.

The November 21st General Meeting will be our semi-annual auction! We will have a silent auction prior to this from 6:30 – 7 P.M.

Show Committee Chairperson Cheryl Brown reports that we are in the process of finding a hotel for the convention. Members will begin wire wrapping the convention favors in January, if you would like to help, please contact Cheryl Brown. **The next meeting for show committee will be on January 24, 2023, at 7 P.M.**

Sergeant at Arms Matt Klinger will begin **inventory** of the clubhouse soon! This will be the first full inventory the club has even done! He will need a lot of assistance, so if you're familiar with the collections, your expertise would be greatly appreciated. Dates and times for inventory are TBA.

The GMSS's Christmas Party will be at Bella Domani on December 11th from 12 P.M. – 4 P.M. Please see

Cheryl Brown's note in this newsletter (next page) for information on menu, cost, payment, and how to sign up.

John Sweeney made a motion to adjourn the meeting, all members present seconded the motion. All in favor.

Respectfully submitted,
Skylar Haas

GMSS Auction Rules:

1. Only club members can sell items. Anyone can bid on auction items.
2. The auction begins at 7:30. If you are selling items, please come early to obtain the two auction label forms and set your items up on the auction tables. The doors will be open by 6:00.
3. Each item must have two completed auction labels. One is a description form for each item, which will be given to the successful bidder. (Mineral name and location collected) The second form will be given to the treasurer for the club records.
4. There is an upper limit of five (5) items per seller. There is no maximum limit for the number of items donated to the club.
5. This is not a silent auction. Each bidder will be given a number on a sign to display.
6. Any material with a specified minimum bid that does not sell will be returned to the seller.
7. The club will retain 15% of the selling price. The full selling price of the donated items will be given to the club.
8. The highest bidder wins the auctioned item. Runners will deliver each item to the winning bidder and collect the payment for that item. Bidders need not leave their chairs. **BIDDERS, PLEASE BRING PLENTY OF CASH.** Items selling for more than \$15.00 can be purchased by personal check. All other items will be cash only. We have no means for swiping credit cards.
9. Sellers cannot bid on their own items.



Holiday Party

December 11, 2022

Noon to 4:00, Bella Domani
5988 East Taft Rd, North Syracuse

\$20.00 members

\$25.00 non-members

Menu – Omelet station, Belgian waffles, ham, bacon, sausage, penne pasta with vodka sauce, spinach ambrosia salad, fresh fruit salad, assorted breakfast pastries, juice, coffee, and tea

Please sign up with your payment at the November meeting or send in your reservation to: GMSS

PO Box 2801

Syracuse, NY 13220

Note: Reservation and payment is due by November 28th.

PayPal Instructions for Christmas Party Payment (if you cannot pay by check or cash)

You can send payment for the Christmas Party to Secretary Skylar Haas via PayPal. This method of payment to Skylar Haas will be temporary only for the Christmas Party. For future events, we will be setting up an account for Treasurer Linda Clark Sweeney.

You can search for me in PayPal using my email address:

skylar.gmss@gmail.com

OR

Search by my username @SkylarHaas108

***Please make sure that you include in the note with payment a memo such as this, "GMSS Christmas Party - *Your Name(s) Here**"

Please make sure that if PayPal prompts you to select whether this payment is for a friend or family member vs. a good or service, **YOU MUST SELECT FOR FRIEND OR FAMILY** or else a fee will be taken out and we won't get the full payment amount.

Please bring an unwrapped toy for Toys for Tots, food items for a food pantry (see the note below), and an unwrapped gift for the gift exchange.

Please bring food items to the Holiday Party on December 11th which will be donated to a local food pantry. Please make sure items have not gone past their expiration date.

I saw the following on Facebook and found it interesting and extremely helpful. Items that need refrigeration or are perishable should be left to the food pantry, though.

1. Everyone donates Kraft Mac and Cheese in the box. They can rarely use it because it needs milk and butter which is hard to get from regular food banks.
2. Boxed milk is a treasure since kids need it for cereal which they get a lot of.
3. Everyone donates pasta sauce and spaghetti noodles.
4. They cannot eat all the awesome canned veggies and soup unless you include a can opener or buy cans with pop tops.
5. Oil is a luxury but is needed for Rice-a-Roni which they also get a lot of.
6. Spices or salt and pepper would be a real Christmas gift.
7. Tea bags and coffee make them feel like you care.
8. Sugar and flour are treats.
9. Tuna and crackers make a good lunch.
10. Hamburger Helper goes nowhere without ground beef.
11. Cake mix and frosting make it possible to make a child's birthday cake.
12. Dishwashing detergent is very expensive and is always appreciated.
13. Feminine hygiene products are a luxury and women will cry over that.
14. Diapers are extremely expensive.
15. Everyone loves Stove Top Stuffing.

Thanks!!

Geo Lexis (Puzzle) By Anne Fitzgerald

"Pseudo-Fossils and Quasi-Crystals"

I now keep my snow brush with ice scraper in my van all year round. It might seem silly in summer, but in years past, the snow brush always found its way to the back of the shed waiting to taunt me at the first freeze. To retrieve involved moving the wheelbarrow and the lawnmower out, finding the snow brush, then moving everything back in. This year I was ready.

But once inside my car, I found I could not get rid of that ice until I enjoyed the beauty. The ice crystals formed patterns that looked just like fern leaves. How could this be with no ferns around? These types of patterns have tricked scientists into thinking they had fossils, when all they had was a rock with fern patterns that looked like fossils. What could they do with these fossil wannabes or fake fossils? Well, they could give them a name. And the name is pseudo-fossils. (Not to be confused with Quasi-Crystals) Quasi-Crystals are real crystals, just a little different. Crystals have been found in fern fossils and fossils have been found in crystals. Could it be I discovered a pseudo-fossil on my windshield? Further research proved I discovered nothing. These patterns are common on windows, and crystals are really everywhere. Unscramble the following to determine things that are made up of crystals. If your trail goes cold, a solution is on Page 6 of this newsletter.

thystame
ruzatie
apol
citelac
teleetics
targen
last
sloweanksf

Upcoming Events

Nov. 5—WALDORF, MD: Show & sale; Southern Maryland Rock & Mineral Club; Old Waldorf School, 3074 Crain Highway; Sat. 9-4; Adults \$5, Seniors (65+) \$4, Juniors (7 to 17) \$3, Under 7 Free; Rocks, Crystals, Fossils, Lapidary, Handcrafted Jewelry, Minerals, Holiday Gifts. Fluorescent Tent. Door Prizes. Free parking; contact Dave Lines, (240) 427-7062; Website: www.SMRMC.org

Nov. 5-6—OAKS, PA: Annual show; Tuscarora Lapidary Society; Greater Philadelphia EXPO Center, 100 Station Ave; Sat. 10-6, Sun. 10-5; Adults \$6 (\$5 with discount coupon); 2-day adult ticket \$9; children under 12 years \$1; Boy Scouts & Girl Scouts in uniform accompanied by adult scoutmaster admitted free; Gemarama: "A Rainbow of Possibilities" will feature vendors of fine gems, minerals, & jewelry. In addition, there will be numerous exhibit cases, a large demonstration area of lapidary & jewelry arts, kids' activities, silent auctions & more. Free parking & food available; contact Linda Green, (610) 490-5252; Email: tuscaroralapidary@gmail.com; Website: www.lapidary.org

Nov. 12-13—NEW YORK, NY: Annual show; Bary Gems Inc. & New York Mineralogical Club; The School of Fashion Industries, 225 West 24th St; Sat. 10-6, Sun. 11-5; \$6 adults; children under 12 free; Mineral, jewelry, gem & fossil dealers. hourly door prizes. Free lectures organized by New York Mineralogical Club; contact Mohamed Bary; Email: barygems@gmail.com; Website: www.barygems.com

Nov. 12-13—LANCASTER, PA: Symposium & Field Trip; Friends of Mineralogy - Pennsylvania Chapter; Bright Side Opportunities Center, 515 Hershey Ave; Sat. 8:30-4:30, Sun. 9-3; \$25/person for non-members (or join for 2023 & get the member rate), \$15/person for current FM-Pa members; free for college students; free for younger students; Sat. Symposium: Talks by five knowledgeable speakers on minerals, geology & mining in Pennsylvania & beyond; sales; silent auction; giveaway table. Sun. Field trip: open only to symposium registrants. Please register in advance; contact David Glick; Email: xidg@verizon.net; Website: <https://www.rasloto.com/FM/whats-new/>

Nov. 19-20—WEBSTER, MA: Annual show; Worcester Mineral Club; St Joseph School / Richard Nowak Gymnasium, 47 Whitcomb St; Sat. 9-5, Sun. 12-5; Kids under 12 free, seniors \$1 off; Brand new Location! 21 Vendors, exhibits, demonstrations, hourly door prizes. raffle, food, club booth, club displays. Free Parking, HCP accessible. gift bags for kids; contact Darlene Fohlin, (860) 428-4148; Email: hunzo.dgf@gmail.com

Nov. 19-20—LEBANON, PA: Wholesale & retail show; Mid-Atlantic Gem & Mineral Association (MAGMA); Lebanon Expo & Fairgrounds, 80 Rocherty Rd; Sat. 10-5, Sun. 11-4; \$6 General Admission; Children 12 & under free; The Mid-Atlantic's premium Gem, Jewelry, Mineral & Bead Show will be conducting its 13th Annual Holiday Show focusing on jewelry crafts & holiday-related items. View the rough materials of the mineral world in its original form & after it's transformed into refined products & jewelry; contact Teresa Schwab, (301) 807-9745; Email: beadware@rcn.com; Website: www.gem-show.com

Nov. 19-20—FAIRFAX, VA: Annual show; Northern Virginia Mineral Club, Inc; Dewberry Hall, Johnson Center, George Mason University, 4400 University Dr; Sat. 10-6, Sun. 10-4; Adults \$6, Seniors \$4, Teens (13-17) \$3, Children 12 & under FREE, GMU Students & Faculty FREE w/ID; Over 20 Gem, Mineral & Fossil dealers offering high-quality specimens for sale. Demonstrations, Door Prizes, Kids Activities & more. Silent Auction on Sunday; contact Tom Taaffe; Email: rockclctr@gmail.com; Website: www.novamineralclub.org

NOV. 21 – GMSS meeting – 7:30 pm, Our Annual Fall Auction is planned (see Page 3).

NOV. 29 – NO Show Committee meeting.

Dec. 3-4—OLD BETHPAGE, NY: Annual show; Island Rock Hounds & Suffolk Gem & Mineral Club; Old Bethpage Restoration Village, 1300 Round Swamp Rd; Sat. 10-5, Sun. 10-5; \$6 Adults; children under 12 free if accompanied by adult; Minerals, Gems, Jewelry & Fossil Dealers. Hourly door prizes. Children's activities. Grand prize drawing; contact Elaine A Casani; Email: lavenderlady@optonline.net; Website: www.suffolkgem.com or www.islandrockhounds.com

DEC. 6 – GMSS Board meeting – 7 pm at the Clubhouse. All are invited.

DEC. 11 - our annual Christmas Brunch 12:00 – 4:00 pm at Bella Domani Restaurant, 5988 East Taft Rd., Syracuse (See Page 4 for details).

DEC. 27 – NO Show Committee meeting.

Answers to Geo Lexis

thystame	amethyst
ruzatie	azurite
apol	opal
citelac	calcite
telectics	celestite
targen	garnet
last	salt
sloweanksf	snowflakes

Sources and further reading:

University of Bonn. "New field of research: Crystal traces in fossil leaves: Study demonstrates that enigmatic microstructures originate from calcium oxalate." ScienceDaily. ScienceDaily, 7 October 2022. <www.sciencedaily.com/releases/2022/10/221007112119.htm>.

pseudofossils academickids.com
<https://kids.frontiersin.org/articles/10.3389/frym.2020.00022>

<https://www.fossilera.com/pages/most-popular-crystals>

Oct. 17, 2022 - Club Meeting: Open House, Silent Auction & "Minerals on U.S. Stamps"

Photos by Judy Cook



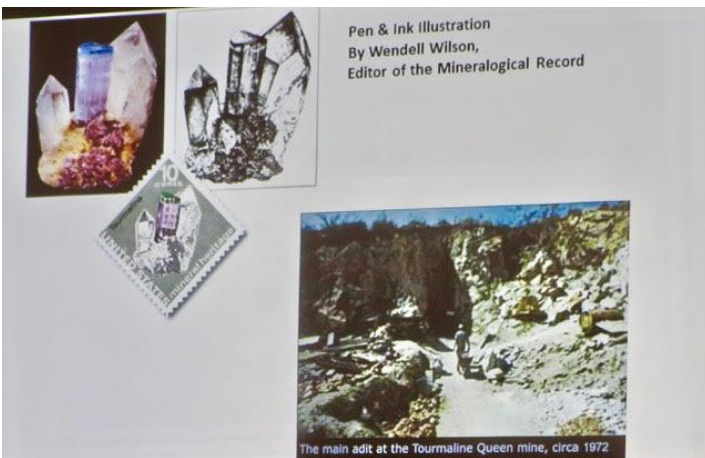
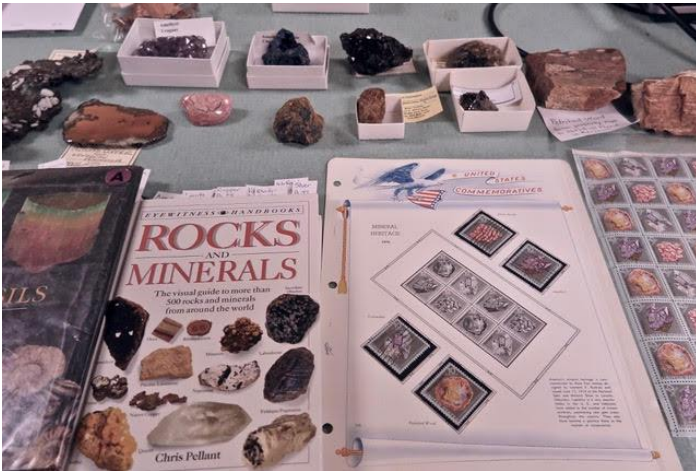
The Lapidary Center held an open house – if you knew the secret password, you could get by Steve Shorey and Mark Grasmeyer guarding the doorway!



The silent auction was popular – just watch out for those last few seconds!



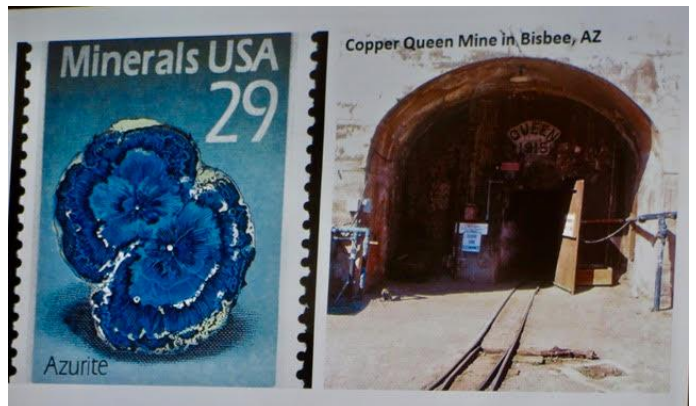
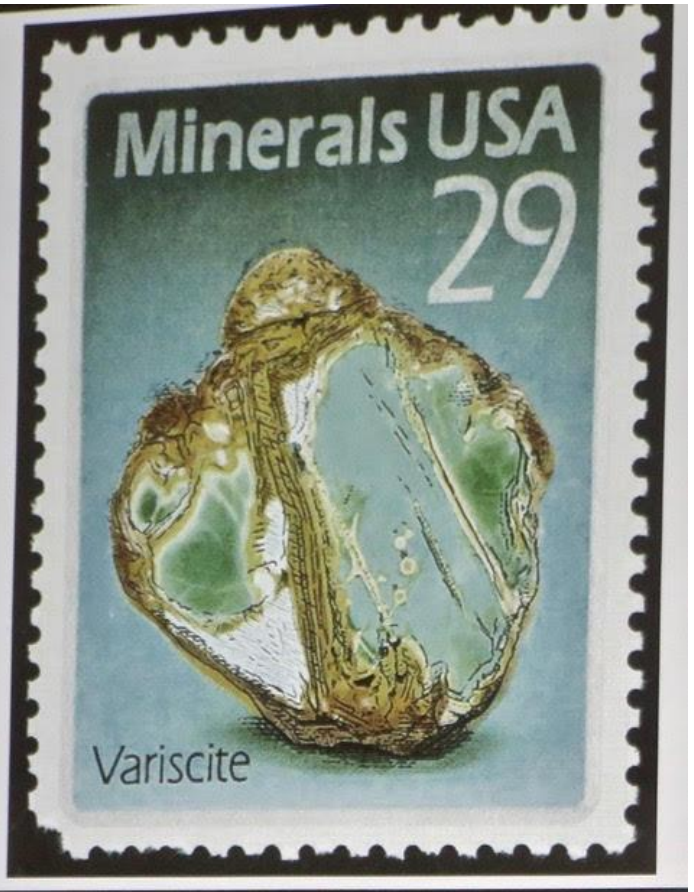
The September speaker finally showed up in October to give his presentation.

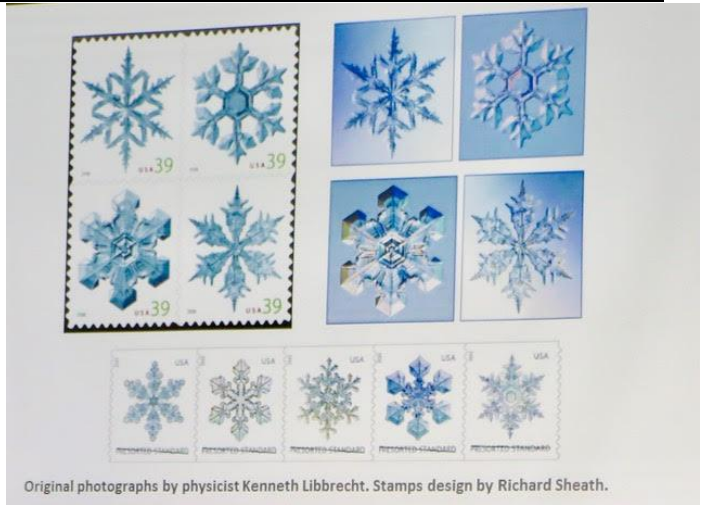


The 10 cent mineral stamps from 1974 are now worth 25 cents each, or \$1 for the block of four, according to the current Scotts Stamp Catalogue. The 29 cent ones from 1992 are worth 60 cents each, or \$2.40 for the block of four.

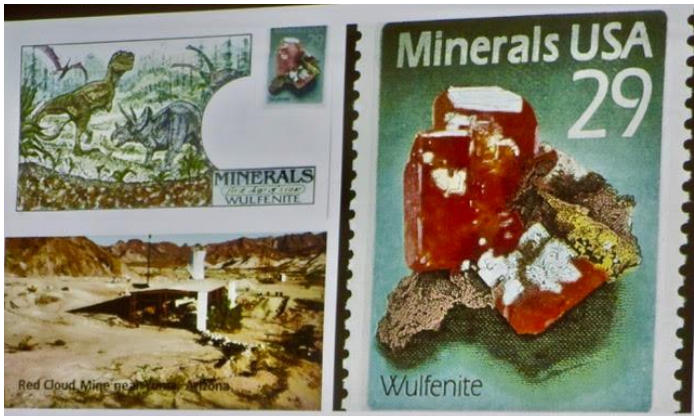


Final summary of the work done in the mine, up to 2004.





The remaining new board members being inducted by Dick Lyons.



President John Sweeney explains that the money that goes into the "Kitty" is used for scholarships.

OCT. 22 -23 – Chuck Hafner’s Garden Center Festival
Photos by Judy Cook



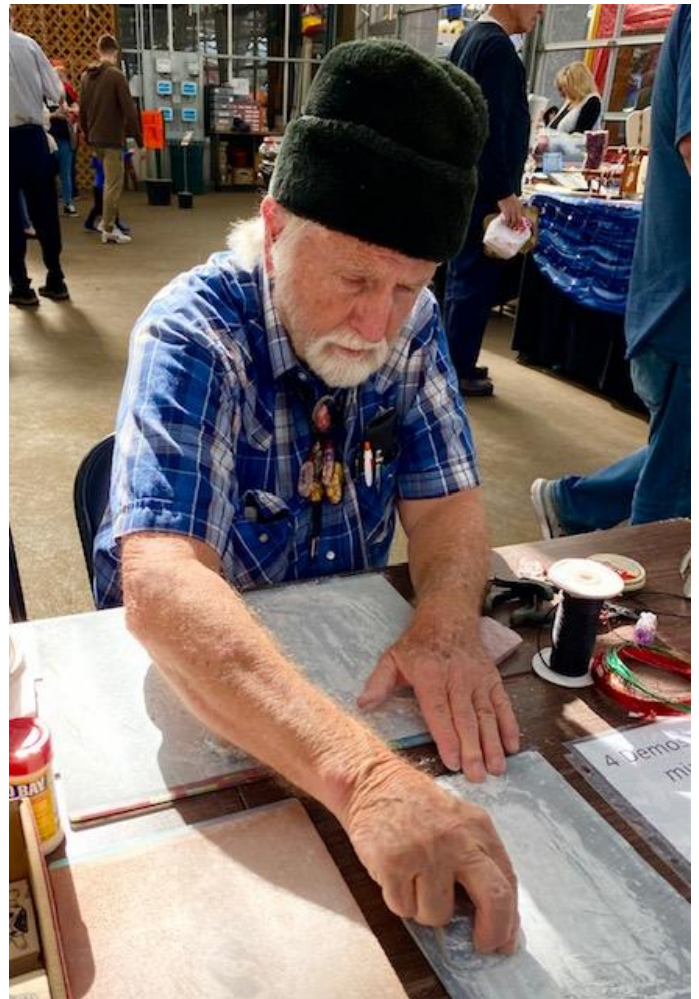
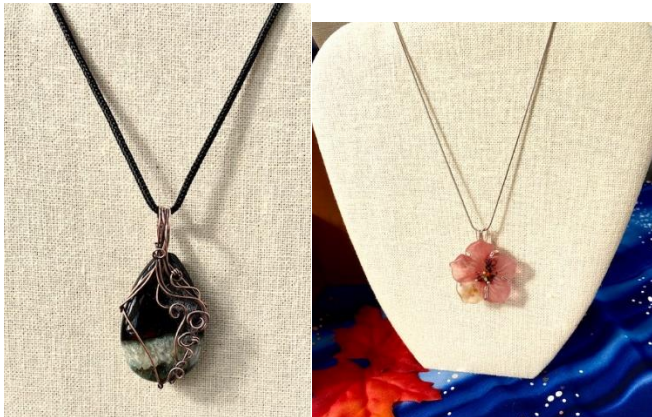
Hmm...must be rock candy!





4 Demos about 15 minutes in rotation

- ∞ Wire wrap a pendant
- ∞ Polish a flat rock
- ∞ Engrave picture on it
- ∞ Work with Mica





Mineral display by Rick Moore





Your dues – how do we as a local club benefit from being a member of Eastern Federation and affiliated with American Federation? (This is an update of my 2016 article.)

By Bob Livingston, Past President

- Affordable and necessary insurance to let us collect on sanctioned field trips in quarries, public lands, etc. Second is optional insurance to cover accidents at club meetings or annual show/approved events.
- Lending library of over 600 hobby-related slide and video programs covering wide aspects of our hobby (currently being converted to DVDs).
- Annual Directory of currently 80+ EFMLS (Eastern) member clubs and their officers, contact information. This is a great asset when considering vacation travel and you can plan to attend a show someplace you wish to visit/perhaps collect in another state. Highlighted are all the movers and shakers, past presidents, and ditto Eastern conventions, plus all the competitions & programs available to clubs and members.
- Monthly EFMLS News and AFMS Newsletters which are available online, and which our President and Editor receive and use to keep us abreast of helpful or interesting happenings.

- Listing of our annual GemWorld show in the EFMLS News for 3 months to broaden potential attendance exposure.
- Wildacres workshops in the Blue Ridge, NC mountains where you meet great folks from all over and learn to make great jewelry and related items that you take home to wear and display. All for only \$500 per person (2022). Sessions typically include 7-10 different classes. Major speakers give 5 interesting talks. Auction of donated items where one can pick up some neat things at pretty good prices.
- Wildacres Tailgating mid-week afternoon to sell or buy.
- Usually early May and again in early September with many different classes. Never been? GO for a fantastic week. Private room/bath. Dining room for three good meals per day.
- Annual raffles with really nice items up for grabs. Past member John Baumler bought one ticket for \$5 and won the incredible 5500 ct faceted CZ gem a few years back. It takes 2 hands to hold and was donated to GMSS and this past July displayed at GemWorld.
- Opportunity to be nominated and elected to prominent positions of leadership. GMSS members Bob Livingston, Carl Miller and Loren Patterson have been honored to serve as President of EFMLS for one year each. Cathy Patterson was Secretary, Harold Spath Reg III V.P. several yrs, ditto John Baumler. Plus, Lou Budell was Eastern Treasurer for many years. In 1980s Paul Dunnig from GMSDS was also President of EFMLS. Paul got the still-in-force insurance program launched for Eastern.
- Contests to show off club activities and shine with top awards in many cases: Bulletin Editors contest where Keith Gilmer took top awards and Loren and Cathy won several. Also are Webmaster contests, display-case contests, Each One Teach One award which Dave Millis garnered twice, Rockhound of the Year which many of us have been honored, All American Club award which GMSS has won 3 times, and the list goes on.
- The top award "Citation" given annually to a person who has served the Eastern Federation in special ways for many years. Sort of like a Lifetime Achievement award. Carl Miller and Bob Livingston have had that honor bestowed on them.
- Annual convention and show; this year was just in Harrisburg, PA where there is an annual meeting with election of officers and a Crackerbarrel session for clubs to exchange ideas or address mutual problems and kick around possible solutions. Also at the show there is opportunity for each of us to enter a display in competition and hopefully garner a nice award certificate or maybe even a trophy. This would be where Bulletin Editors and Webmasters awards are presented. There is also an auction of "Good Stuff" on Saturday of show. Frequently there are one to two field-collecting trips tied in with the convention. Our SYR Club has hosted 3 times since mid-90s and we are at bat again July 2023.

It's a great deal. Too often we forget how MUCH we have available to us.



Gem & Mineral Society of Syracuse
PO Box 2801
Syracuse, NY 13220
First Class Mail
 Time-Dated Material



www.amfed.org www.amfed.org/efmls [Future Rockhounds](#)

Eight people organized the Gem and Mineral Society of Syracuse in 1951. Since that time it has grown in membership to include adults, families, and young folk. The Society was incorporated in 1969 under the same name.

The objectives of the Society are to stimulate interest in mineralogy, paleontology, and the lapidary arts. Member interests include collecting, identification, and display of minerals, gems, fossils. Members share and develop their artistic skills in jewelry design and creation.

Our monthly meetings provide social and educational experiences. Field trips give collectors chances to find specimens and enjoy the out of doors, exercise and time with old and new friends.

Meetings - 3rd Monday of the month
Future Rockhounds @ 6:30 - General Meeting @ 7:30
(NO Meetings Jul, Aug, Dec)

209 Oswego St (Ponderosa Plaza) Unit 14 & 15, Liverpool, NY
Visitors are ALWAYS welcome!

See online Newsletter <http://gmss.us/resources/newsletter>
 You can also visit our facebook and flickr pages

Annual member dues

Adult \$10 • Family/Couple \$15 • Junior \$5 • Life \$5

If you would like to join or renew membership download the application form (PDF), see <http://gmss.us/about/membershipform.pdf> You can get a form at a meeting or send requests to **GMSS, PO Box 2801, Syracuse, NY 13220** We will mail an application/renewal form to you.

2022 – 2023 GMSS Officers/Contacts

-President: John Sweeney
pres@syracusegemsociety.com

-Vice-President: Cathy Patterson
vp@syracusegemsociety.com

-Treasurer: Linda Clark
treasurer@syracusegemsociety.com

-Secretary: Skylar Haas
secretary@syracusegemsociety.com

-Jr Rockhounds: Rick Moore
kidsrock@syracusegemsociety.com

-Membership Chair: members@syracusegemsociety.com

-Sgt at Arms: Matt Klinger
sgtatarms@syracusegemsociety.com

-GemWorld Show Chair: Cheryl Brown 315-708-9122
show@syracusegemsociety.com

-Club Librarian: Steve Albro 607-756-2298
library@syracusegemsociety.com

-Lapidary Committee Contact: Steve Shorey
lapidary@syracusegemsociety.com

-Newsletter: Larry Petry 315-472-9226
editorgmss@gmail.com

-Facebook: Judy Cook
socialmedia@syracusegemsociety.com

-Website: Amanda Lytle
webmaster@syracusegemsociety.com

-Photographer Extraordinaire: Judy Cook
-Hospitality Committee Chair: Mary Davis
 315-885-4416 hospitality@syracusegemsociety.com