

## President's Message

John Sweeney



Our **auction** is the big headliner at this month's meeting. Remember Christmas is coming! This is a good chance to stock up on some goodies or to pass along some of your own specimens to other aficionados. The club is making room and auctioning some of the donated items we have

received recently so bid high and hard on those items with pink labels. Their proceeds go to your club. The **rules for the auction are listed later in this newsletter**. There will be quite a few items to auction, so we will be starting the meeting early. **People with items to auction should come in between 6:00 and 6:45 to register** their items so we can **begin the auction promptly at 7pm**. We could use a few volunteer runners to help get the winning bidders their items if you are so inclined. Otherwise, come on in, get your paddles and be ready to bid.

Don't forget in all the auction excitement that **we're still taking T-shirt orders. We are still taking sign-ups for the Christmas Party as well** so put it on your dance card and get on the list. It's always a good time.

What's in a label? That can certainly be a loaded question, especially these days, but when we're talking rocks and collections of rocks it can be the difference between ending up as fill dirt or in a display case. **In upcoming issues of the Crack 'N Cab I'd like to invite members to share how they label and track and curate their own collections.** I'll be putting forth an article or two that I hope will help others to get some perspective on how, as collectors, we can get a little more organization and information into our collections and reap the rewards of that knowledge. You can write an article and email it to our editor, or you can help me with suggestions as I put together my articles. As an end result, I'd like to see us organize the club's collection and post a how to on our website. My email is [Pres@gmss.club](mailto:Pres@gmss.club).

See you at the auction Going once. Going twice. Sold.

John Sweeney, President/sometimes Auctioneer

## Executive Board Meeting November 8, 2023 Minutes

Called to Order at 7 PM

### President:

- Diamond Dan Publications: John is still working with them.
- Committee to build fluorescent display case: will probably use existing case and just modify. Still working out eye protection aspect.
- Will be working over the next 2 weeks to prep for auction at the November meeting.

### Secretary Report:

Accept Minutes (October 2023): Motion to accept by Cathy P. second Dick L / accepted unanimously.

### Treasurer Report:

- Audit was done before this meeting
- **Tee shirts, hoodies, etc. for order: Linda will have flyers/order forms at the next meeting for members to order.**

### VP report: Meetings and field trips

- **November: Club Auction.** Need alternate auctioneer just in case John is called away (Chris Boronczyk volunteered)
- **Change in auction rules: Now limited to 3 items per person / 6 per family**
- No hospitality at the November meeting; too chaotic and won't have room to set up food. Both T shirt and Holiday Party sign up will be available.
- December/Holiday Party/table favors and poinsettias/ decorations: Cathy P. is coordinating.
- **January meeting will feature members' field trip stories.**

### Web Mistress:

- Amanda will change forms to reflect **new 2024 dues schedule: \$15 Single; \$20 Family; \$10 Junior (alone)**
- New web address [www.gmss.club](http://www.gmss.club) is working so well...thank you, Amanda!

**Facebook:** Judy will put Holiday Party information on Facebook.

**Membership:** **Raise dues Jan. 1, 2024**

**Junior Rockhounds:** No report

**Hospitality:** No refreshments will be served at the Nov. auction.

### Lapidary Committee:

- Refractometer available / Bill will train anyone who wants to use the machine
- Classes are going well / lots of students

- Recently received a donation / Bill will catalog and send a note with value for tax purposes

- **Increasing shop prices starting January. Shop time will now be \$7, and classes will be \$60.**

**Show:** Committee formed to look into a possible Fall Show / Boronczyks, Dick L, John will start looking at possible spaces.

**Editor:** Deadline is Thursday at 11:01 PM

**Sergeant at Arms:** Have new computer to start collection summary and use at show. Software installed.

Meeting adjourned at 9PM

Respectfully submitted,  
Teresa Arnold / Secretary

## *This is your last chance!*



Linda Clark Sweeney will **still be selling GMSS t-shirts (like the one pictured), sweatshirts, V-neck shirts at the Nov. meeting. Prices will be posted.** If interested, bring cash to the meeting. Then the order will be put in. (Photo by Judy Cook)

## For New Members!

Becoming a new member of the GMSS may be a bit confusing. Joining any club is a new experience filled with questions. We who have been around a few years never give it a thought to explain things like membership dues, passing "the kitty," the 25 and 50 cent table, the suggestion box, and a myriad of other quirky things. Please don't be afraid to ask a member to explain something you don't understand! We're glad to help you.

### Membership Dues

The Gem & Mineral Society of Syracuse has a fiscal year starting in September. We ask everyone to renew their membership starting in September. The fall auction is open to club members with paid up dues. The Christmas party is partially subsidized also for club members. If you join later than December this year, please be aware that the membership fee has increased slightly to help defray costs to the Federation, club insurance, newsletter mailing, costs to run the clubhouse, and many other club expenses.

**Dues starting in January 2024 will be \$15 for single membership, \$20 for family, and life members being continuously paid up for 20 or more years remains at \$5 per**

**person. It is wise to pay your dues before the end of the year.**

When you pay your dues, they will be good until the end of September, when we begin our fiscal year. We are a member club of the Eastern Federation of Mineralogical and Lapidary Societies (EFMLS). We pay dues to the Society and get benefits such as insurance. Our membership list is sent to the Federation by the end of December.

## Membership Reminder

If you haven't renewed your membership yet, it's not too late!

You can mail it to the post office box or bring it with you to the November 20th meeting.

Adults \$10.00

Family \$15.00

Youth \$5.00

Life Members \$5.00

**Check out our brand-new web address:**

**WWW.GMSS.CLUB**



Easy to Remember!



Easy to Tell Your Friends!

(GMSS = **Gem & Mineral Society of Syracuse**)

## Sunshine

Cathy Patterson

Our thoughts are with **Keith and Dorothy Gilmer** as Keith anticipates surgery Monday 11/13.

**Charlie Brown** is also facing some health challenges. Our thoughts are with **Tim Hart** who recently lost his brother.

**Bob and Joan Livingston** have changed their residence due to health concerns. We miss them and wish them good health and happiness.

Our little gem and mineral club is like a family held together, some for MANY years, by the common thread of our hobby interest. If you know of a member needing some "sunshine" please contact me and I'll get a card in the mail.

## GMSS Auction Rules:

1. Only paid-up GMSS club members can sell items. Anyone can bid on auction items.
2. The auction begins promptly at **7:00 pm**. If you are selling items, please come early to obtain the two auction label forms. Set your items up on the auction tables. **Come early - the doors will be open by 6:00 pm.**
3. Each item must have two completed auction labels. One is a description form for each item, which will be given to the successful bidder (Mineral name and location collected). The second form will be given to the treasurer for the club records and to give correct payment.
4. **There is an upper limit of 3 bid items per person; 6 bid items per family.** This is reduced from previous auctions due to the time it takes to complete the auction and how many items we will be putting in from the acquired collection.
5. This is not a silent auction. Each bidder will be given a number on a sign to display.
6. Any material with a specified minimum bid that does not sell will be returned to the seller.
7. The club will retain 15% of the selling price. The full selling price of the *donated* items will be given to the club.
8. The highest bidder wins the auctioned item. Runners will deliver each item to the winning bidder and collect the payment for that item. Bidders need not leave their chairs. **BIDDERS, PLEASE BRING PLENTY OF CASH.** Items selling for more than \$15.00 can be purchased by personal check. All other items will be cash only. We have no means for swiping credit cards.
9. Sellers cannot bid on their own items.
10. Checks may be mailed to those winning sellers; most likely in December, shortly after the meeting November 20.

## Geo Lexis (Puzzle) By Anne Fitzgerald

### "Making a Cene"

I'm a planner. I'll be starting my New Year's resolution soon so there's no pressure on 1/1/2024. I also need plenty of time to prepare for the fact that (in case you haven't heard) we may all be part of a new epoch starting in August of 2024. We humans have done enough to the planet to create a cataclysm on the scale of a huge asteroid crash. Our often-forgotten neighbor Canada has the proof in the form of a small and meromictic lake called Crawford Lake. Crawford Lake has been chosen as the official location for proof of a new epoch by the International Commission on Stratigraphy, which is part of the International Union of Geological Sciences, which is part of the International Science Council (formerly known as the International Council of Science).

Crawford Lake was chosen because since the upper and lower parts never mix, layers of history lie undisturbed. Pollen grains from the Middle Ages have been found, and evidence of our influence on the planet in the form of coal-fired steel and plutonium still lingers in the lake. The new epoch still needs to be officially agreed upon by several levels of high-level teams of super geologists including the stratigraphy guys with the final approval left to the International Union of Geological Sciences. The chosen name of our new epoch is "Anthropocene" (pronounced anthru-po-cene). From the Greek for "human" and "new," Anthropocene seems like a much better word than "Holocene" which means "whole" (or recent) and "new." The Pliocene translates to "more new" and the Miocene translates to "less new." The names are really no help at all until we get to the Anthropocene.

So, get ready for the final decision which should be made at the official conference of the International Union of Geological Sciences in South Korea in August of 2024.

In the meantime, see how you do placing epochs in the correct order with their time in history. The answers can be seen on Page 6 of this newsletter.

Place these Epochs in the proper order from most recent to oldest. The Greek translations are listed in case you need a not-so-helpful hint.

#### Epoch

**Holocene**  
**Pliocene**  
**Oligocene**  
**Eocene**  
**Paleocene**  
**Miocene**  
**Pleistocene**

#### Greek Translations

(Recent New)  
(More new)  
(Few recent forms new)  
(Dawn new)  
(Old part of the Eocene new)  
(Less new)  
(Most recent)

## Upcoming Events

### **NOV. 20 – GMSS meeting – 7:00 pm**

We'll have our ever-popular annual club auction of fossils, minerals, jewelry, tools, and rocky related items. This is an excellent opportunity to buy interesting hobby items at great prices! Do NOT miss this! (see Page 4 for Auction rules)

**DEC. 5 – GMSS Board meeting – 7 pm** at the Clubhouse. All are invited.

**DEC. 10 – our Annual Holiday Party – Noon - 4 pm** (see information at right).

**JAN. 2(?), 2024 – GMSS Board meeting – 7 pm** at the Clubhouse. All are invited.

**JAN. 15 – GMSS meeting – 7:30 pm** at the Clubhouse. "Field Collecting" This one will be an in-house presentation by YOU! If you have done some collecting this year, please contact Cathy Patterson and I'll put you on the list to say a few words about what you found. This will be a slightly shorter program than usual so we can include a business meeting and refreshments and get home before it snows!

- Where did you go?
- What did you find? Please bring something to show.
- What was your experience like, especially if you are a new member/collector?
- What did you wish you knew before you went field collecting?
- What advice do you have for other newer members about field collecting?

## Next GMSS Lapidary Classes begin on December 2, 10 AM!

Any Member or Non-Member interested in taking the three-week beginning Lapidary class please contact Bill Vergé at: [b.verge@comcast.net](mailto:b.verge@comcast.net) or text 617-872-4528 for more information.

**This is the class you need if you would like to use any of the Club's Lapidary equipment in the Marie Cole Lab.**

Bill Vergé



## Christmas in November???

### Christmas Party Planning

It's official! We are planning our annual holiday party, and we want you there! We'll have plenty of delicious food, door prizes, time to relax with rockhound friends, and plenty of photo ops in front of the Christmas tree. This is always a fun event, so please plan to attend.

- **Bella Domani - 5988 E Taft Rd., Syracuse** (North Syracuse, just down the road from the main Post Office, and the DMV). Plenty of parking, no stairs, comfortable accommodations
- **Sunday December Noon - 4:00 pm**
- **\$22 per person (club members)**
- **Holiday brunch menu:**  
Fresh-made omelet to order with a variety of fillings, Belgium waffles, ham, bacon, sausage, penne pasta with vodka sauce, spinach ambrosia salad, fresh fruit salad, assorted breakfast pastries, coffee and tea.
- **Food Pantry:** Please bring a non-perishable food pantry item (*We delivered 2 truckloads of food to 2 Food Pantries last year! Much appreciated!*)
- **Marines' Toys for Tots program:** Bring in an unwrapped toy. They accept NON-weapon-like toys for kids ages birth – 12, maybe older. *Gifts for birth-3 yrs are in great need.* Stuffed toys must be 100% brand new (*can't accept gently used stuffed toys*). They appreciate books and educational materials.
- **Gift Exchange:** Please bring an unwrapped, \$10 value, gift to swap, hobby related, or not. *Last year we had wine, holiday dishes, jewelry, mineral specimens, and all sorts of fun and useful items.* There will be NO stealing gifts once claimed at this give away. You like it? You keep it!

**Please bring cash or check to the November meeting and get on the sign-up list.**

**Upcoming Fall/Winter Shows:**

**Nov. 18-19—LEBANON, PA:** Wholesale & retail show; Mid-Atlantic Gem & Mineral Association, LLC (MAGMA); Lebanon Valley Expo, 80 Rocherty Rd; Sat. 10-5; \$6, Children under 12 & Veterans Free; Gem Miner's Holiday Show of Gems, Jewelry, Beads, Minerals, Fossils, Gift & Craft Items. Demonstrations & Wholesale Trade Room; contact Teresa Schwab, (301) 807-9745; Email: [beadware@rcn.com](mailto:beadware@rcn.com); Website: [www.gem-show.com](http://www.gem-show.com)

**Nov. 18-19—WEBSTER, MA:** Annual show; Worcester Mineral Club; Richard Novak Gymnasium, 50 Lincoln St; Sat. 9-5, Sun. 12-5; Contact club for more information on admission prices; Live Demos, gemologist identification, raffles, door prizes, geodes cracking, gift bags, educational displays, & much more; contact Darlene Fohlin, (860) 428-4148; Email: [Hunzo.dgf@gmail.com](mailto:Hunzo.dgf@gmail.com); Website: [www.Worcestermineralclub.org](http://www.Worcestermineralclub.org)

**Jan. 24- Feb. 4—TUCSON, AZ:** Annual show; JOGS Tucson Gem & Jewelry Show; Tucson Expo Center, 750 E Irvington Rd ; daily 10-5, Sun. 10-4; Registered Buyers: FREE - General Admission: \$20 - Proof of Military: FREE - Children: No Children Under 14; The show features a wide variety of products from a diverse group of vendors, including jewelry designers, manufacturers, miners, wholesalers, & jewelry liquidators from countries such as the US, Europe, Africa, India, Thailand, Mexico, Canada, Germany, Nepal, Poland, Russia, & more; contact Yelena Masenko, (213) 629-3030; Email: [advertising@jogsshow.com](mailto:advertising@jogsshow.com); Website: [www.jogsshow.com](http://www.jogsshow.com)

**Jan. 27- Feb.10—TUCSON, AZ:** Wholesale & retail show; Adam Aaronson; Mineral & Fossil Marketplace, 1333 N Oracle Rd; daily 10-6; Free; Get up close to gigantic sea monsters & full-size dinosaur skeletons! The Mineral & Fossil Marketplace is growing. New container lot, large tent, & remodeled gallery host international fine minerals & one of the best fossil exhibitions in Tucson. Come find meteorites, monster crystals; contact Adam Aaronson, (520) 245-3052; Email: [mineralfossilmarketplace@gmail.com](mailto:mineralfossilmarketplace@gmail.com); Website: [www.mfmshow.com](http://www.mfmshow.com)

**Answers to Geo Lexis**

<u>Epochs from new to old</u>		<u>Greek translation</u>
Holocene		Now (Recent New)
Pleistocene	1 million years ago	(Most recent)
Pliocene	5 million years ago	(More new)
Miocene	6 million years ago	(Less new)
Oligocene	25 million years ago	(Few recent forms new)
Eocene	40 million years ago	(Dawn new)
Paleocene	60 million years ago	(Old part of the Eocene new)

Sources and further reading:

Canada's Crawford Lake could mark the beginning of the Anthropocene (sciencenews.org) By McKenzie Prillaman  
 JULY 11, 2023  
<https://canadiangeographic.ca/articles/the-anthropocene-is-here-and-tiny-crawford-lake-has-been-chosen-as-the-global->

ground-zero/July 11 2023 by Alanna Mitchell  
<https://www.iugs.org/The Anthropocene-Basic Considerations>  
 (Video Posted 12/7/23)  
 Physical Setting/Earth Science Reference Tables-2010 Edition  
 (Handout from Len and Susan Sharp at one of our club meetings.)

**Oct. 16 Club Meeting Review**

**Dave "Rock Doc" Millis – Mica Talk**

Photos by Candace Cain



Welcome to the phyllosilicate mineral family!  
 Mica has perfect cleavage along one plane. The mica minerals are sheet silicates with a three-layer sheet structure. They vary in color, with low hardness and perfect basal cleavage. They are monoclinic, and not hexagonal. There are four members of

the group: **Muscovite** (found in the Benson mine) – or “white mica,” usually restricted to granitic pegmatites, was used in coal stove door windows and electrical equipment insulators; **Phlogopite** (found in St. Lawrence Co.) – common and usually found in marbles; **Biotite** – or “black mica,” common, dark color, not flexible; **Lepidolite** – occurs in lithium-bearing granite pegmatites. Micas are used in products such as drywalls, paints, fillers - especially in parts for automobiles, roofing and shingles, as well as in electronics. The mineral is used in cosmetics and food to add "shimmer" or "frost." Dave Millis had free samples for everyone at the end.

### Silent auction and swearing in of officers



Count how many times you see that tall amythest cathedral in this issue. (Photo by Candace Cain)




Officers, from left to right: Cheryl Brown, Show Chair; Linda Clark Sweeney, Treasurer; John Sweeney, President; Amanda Lytle, Webmistress; Dick Lyons, past President doing the swearing in; Teresa Arnold, Secretary; Larry Petry, Newsletter Editor; Cathy Patterson, Vice President. Absent for the photo was Matt Klinger, Sergeant at Arms. (Photo by Judy Cook)

## Rockhound of the Year!!



Congratulations, Bill Vergé!




**THE  
GEM & MINERAL  
SOCIETY  
OF SYRACUSE**

*is pleased to honor*

**Bill Vergé**

*as our*

**2023 Rockhound of the Year**



Bill is a quiet, unassuming member of our club who is a major contributor making a real difference. He has taken many steps to fulfill our vision of having a local learning center for lapidary arts. He donated a large quantity of tools and two jewelry making benches from his former business, which will be invaluable as we start jewelry making classes.

He helped set up lapidary training classes. As a teacher, Bill has an innate ability to communicate with students of all levels of experience. Numerous classes have gone through the instruction and students regularly come in to use the equipment. Classes and open lab times are available on Saturday with Bill acting as a supervisor and mentor.

Additionally, Bill is generous with his time working on projects for our club. He spent long hours cutting over 60 calcite slabs that were used as the base of table favors for the Eastern Federation Convention the club hosted in conjunction with our annual show. Currently, he is sorting and cataloging a large collection that was donated to our club to enable it to be more efficiently processed

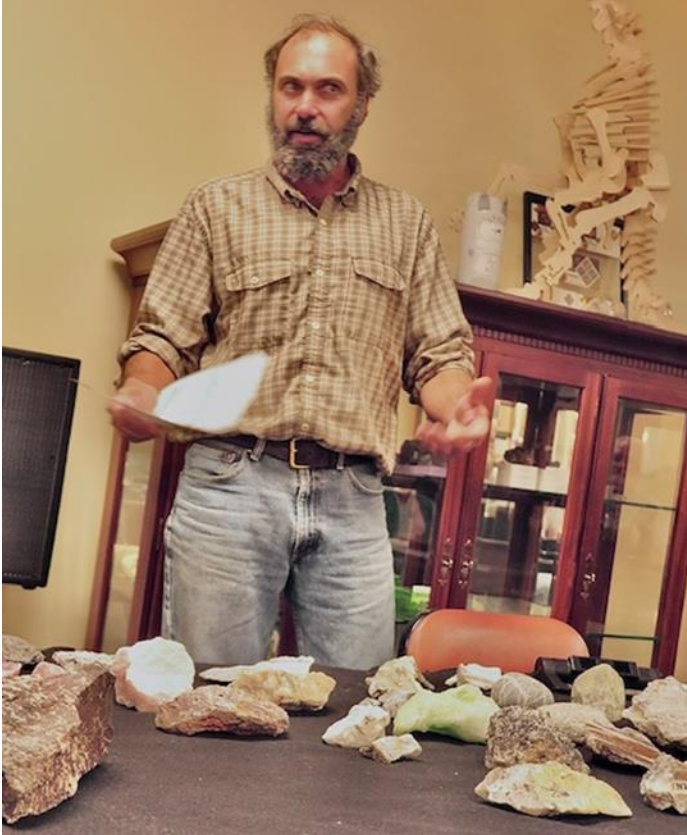
It is with great pleasure that we nominate Bill as our Rockhound of the Year.

~~~~~

*Respectfully Submitted,*  
John Sweeney  
President

# Dino Zack, Geologist: "Rocks That Glow!" Fluorescent Minerals of Northern New York

Photos by Judy Cook



Here's what the rocks – and Dino – look like under ultraviolet light.



Here's what the rocks look like in normal light.



## Fluorescent Minerals Northern New York

- Electromagnetic/Ultraviolet Spectrum
- Examples of Luminescence
- Regional Geology of Northern New York
- Fluorescent Mineral Localities
- Noteworthy Fluorescent Minerals

## Fluorescent Minerals

Per the International Mineralogical Association (IMA), as of July 2023, 5,955 mineral species have been recognized.

About 15% of them have been known to fluoresce visibly in some specimens.

## Activators



### Intrinsic Activators

- Scheelite ( $CaWO_4$ ).
- Uranium minerals (uranyl ion)



### Defect Activators

- Crystal structure (missing ions, extra ions, misplaced ions, partial rows of ions, etc.)
- Diamond (N sub C = yellow)



### Impurity Activators

- Manganese ( $Mn^{2+}$ ) in Halite

### Other Triggers

#### Coatings or Intergrowths

- Due not to the mineral itself, but to a second mineral coating or intergrown with it.  
e.g., Intergrowths of opal on calcite

#### Inclusions

- Due not to the mineral itself, but to inclusions of some other substance within it.  
e.g., Carbon inclusion (Herkimer Diamond)

### Examples of Mineral Luminescence

#### • Fluorescence

- Long wave - Scapolite
- Mid wave - Calcite
- Short wave - Diopside
- Far ultraviolet

#### • Triboluminescence

- Tremolite, Sphalerite

#### • Phosphorescence

- Wollastonite, Willemite

#### • Thermoluminescence

- Chlorophane

### ZCA #4 - Balmat

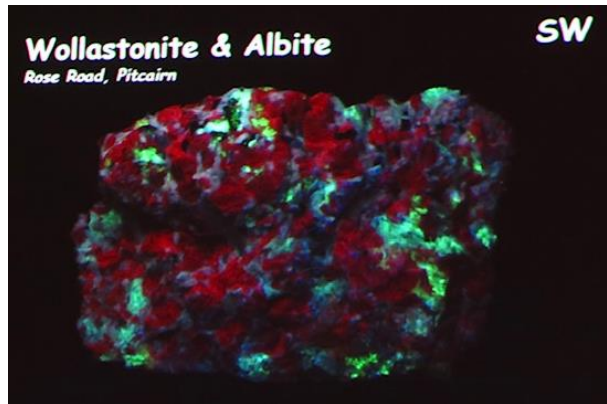
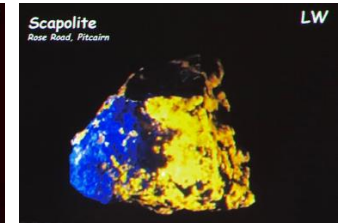
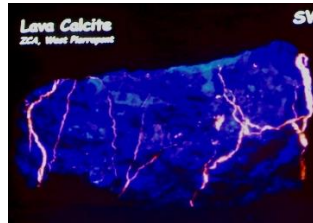
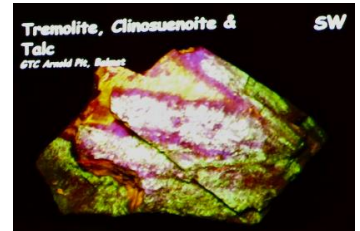
- Turneureite SW
- Lazurite SW/MW/LW
- Sphalerite SW/MW/LW - Tribo. & Phos.
- Calcite SW
- Diopside SW
- Wernerite LW/SW
- Hydrozincite SW
- Tremolite SW - Tribo.
- Phlogopite SW
- Norbergite SW

### ZCA - West Pierrepoint

- Sphalerite SW/MW/LW - Tribo. & Phos.
- Diopside SW
- Wernerite SW/MW/LW
- Calcite SW
- Phlogopite SW
- Hydrozincite SW
- Norbergite SW

### GTC Valentine Mine Harrisville

- Wollastonite SW (Phos)
- Diopside SW
- Phlogopite SW
- Hyalite SW
- Norbergite SW
- Calcite SW (Phos)





# Judy's Journal: Chuck Hafner's Fall Festival - October 21 & 22

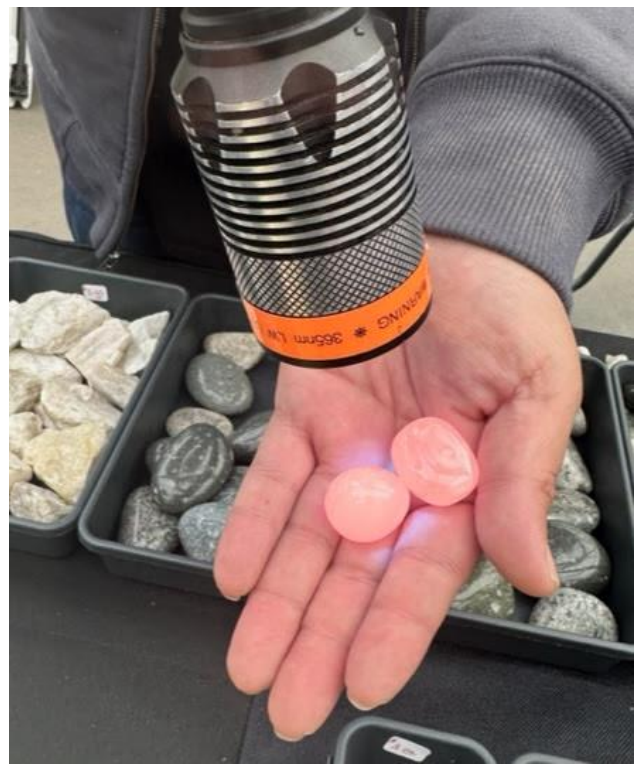
(Photos by Judy Cook)

Our club was well represented - mineral specimens including Lee's huge Herkimer diamond finds, lapidary discussions, jewelry and ornate mineral creations, fluorescent minerals, and wire wrapping classes.



## On the Way to Tucson!

Our famous “monster” Herkimer diamond collector, **Lee Levesque III** is headed to the Tucson Gem Show in February at the request of one of the organizers! To help him defray the substantial costs to travel to and from Tucson, our generous fellow club member, **Tim Hart**, is having a raffle of a LARGE amethyst cathedral. Chances to win this dazzling beauty are \$1 each or 6 for \$5. All proceeds go to Lee for his trip to show off what he found in NYS! We know he'll do a fine job representing the GMSS at this prestigious show! **Please see Tim at the November 20 meeting to buy your tickets.** Good luck to everyone!!



# Rock Doc classes and demonstrations





## Linda Boronczyck and her fabulous creations

Linda even has a line of men's jewelry.

