

Nassau County Soccer Officials Association



NASSAU COUNTY SOCCER OFFICIALS ASSOCIATION



2025 Interpretation

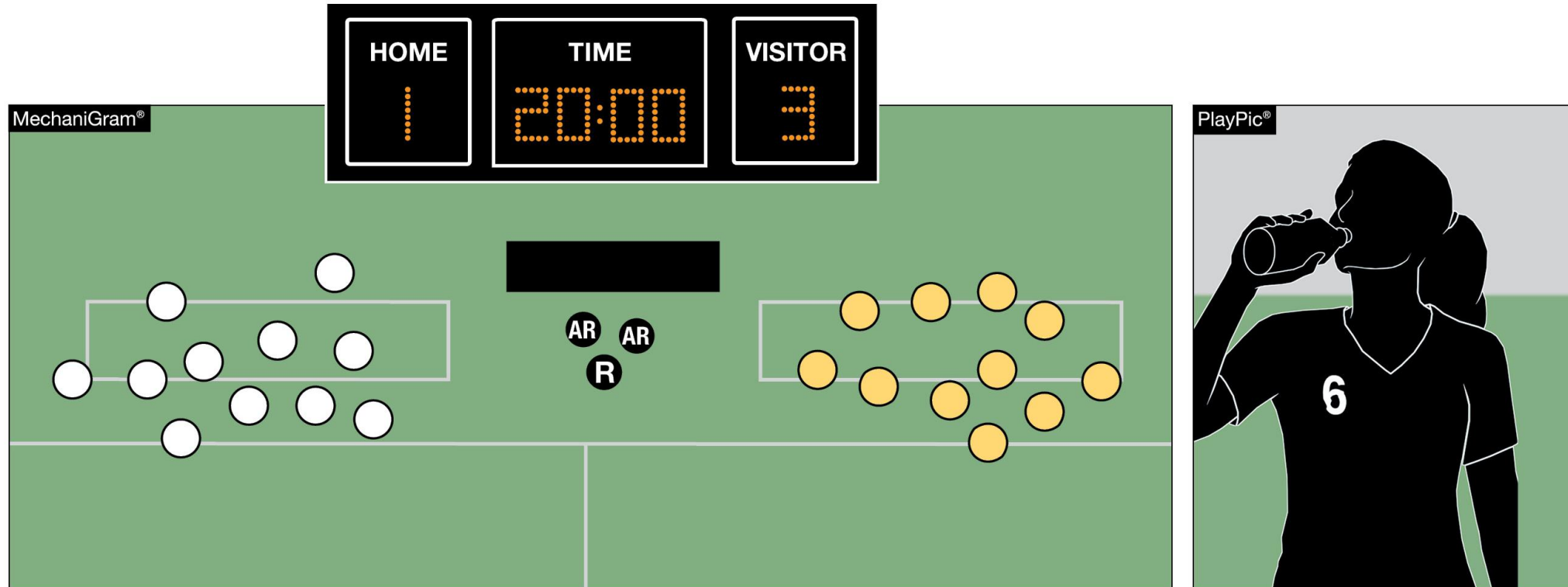




2025-26 NFHS Soccer Rules Changes

SUBSTITUTIONS

RULE 3-3-2c



In addition to being able to substitute players after a goal is scored or when a player is injured, teams may substitute players **when a game is temporarily suspended.**

SUBSTITUTIONS

RULE 3-3-2b2



Amended language clearly states that **once the appropriate health care official is beckoned by the referee**, an injured player (including a goalkeeper) must leave the game.

REQUIRED UNIFORM

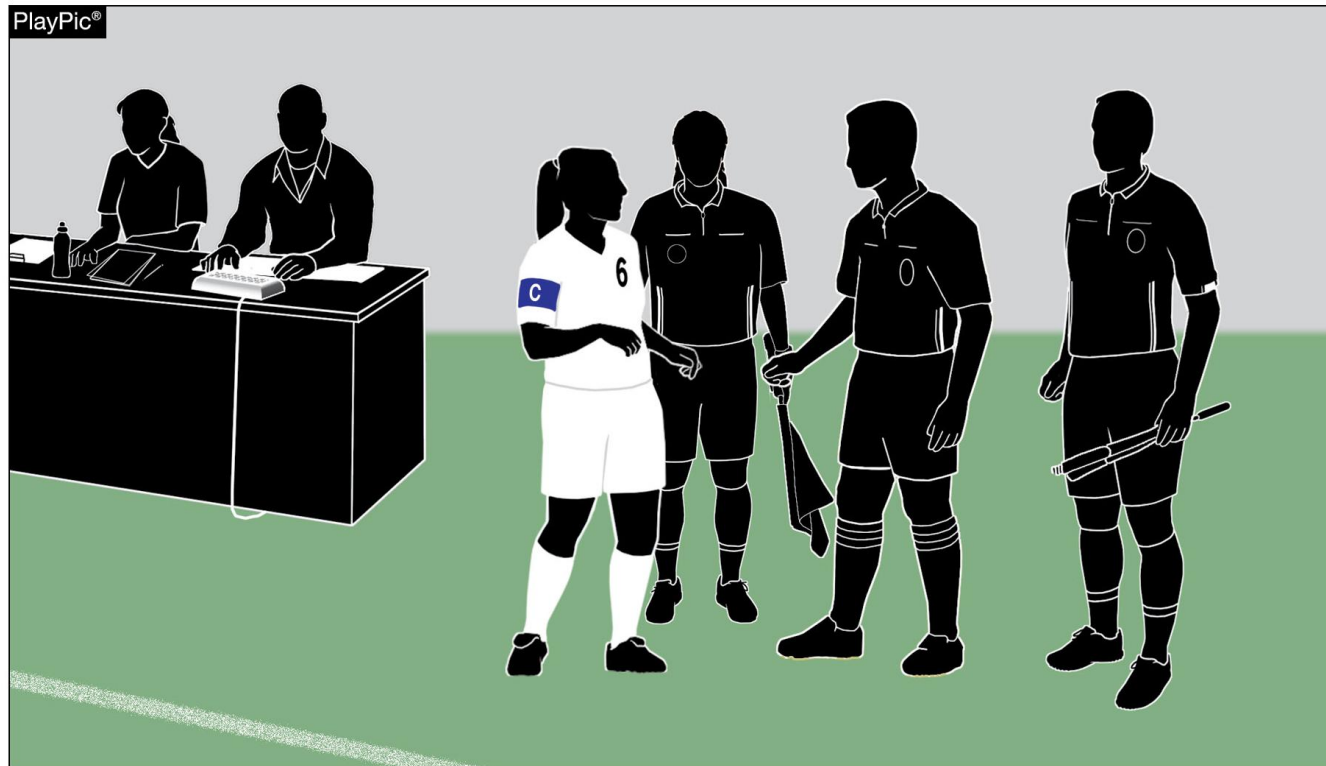
RULE 4-1-2



Amended language clarifies a player's number may be placed on the **front of the jersey and/or shorts** in addition to the back of the jersey.

INTERVALS BETWEEN PERIODS

RULE 7-2-4

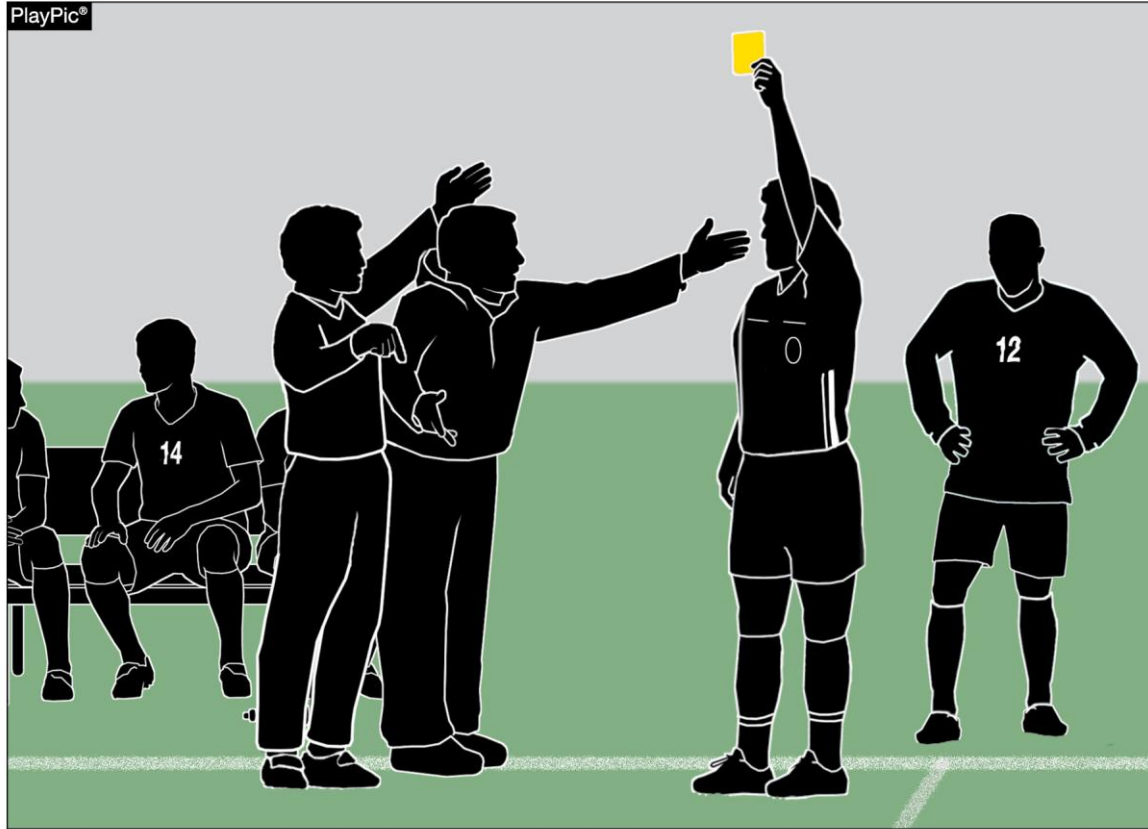


This time is for officials to talk amongst themselves and for coaches to work with their players.

No coach, player, substitute or other team personnel other than the team captain shall approach or speak to the officials during an interval between periods, unless beckoned by an official.

MISCONDUCT

RULE 12-4-4b

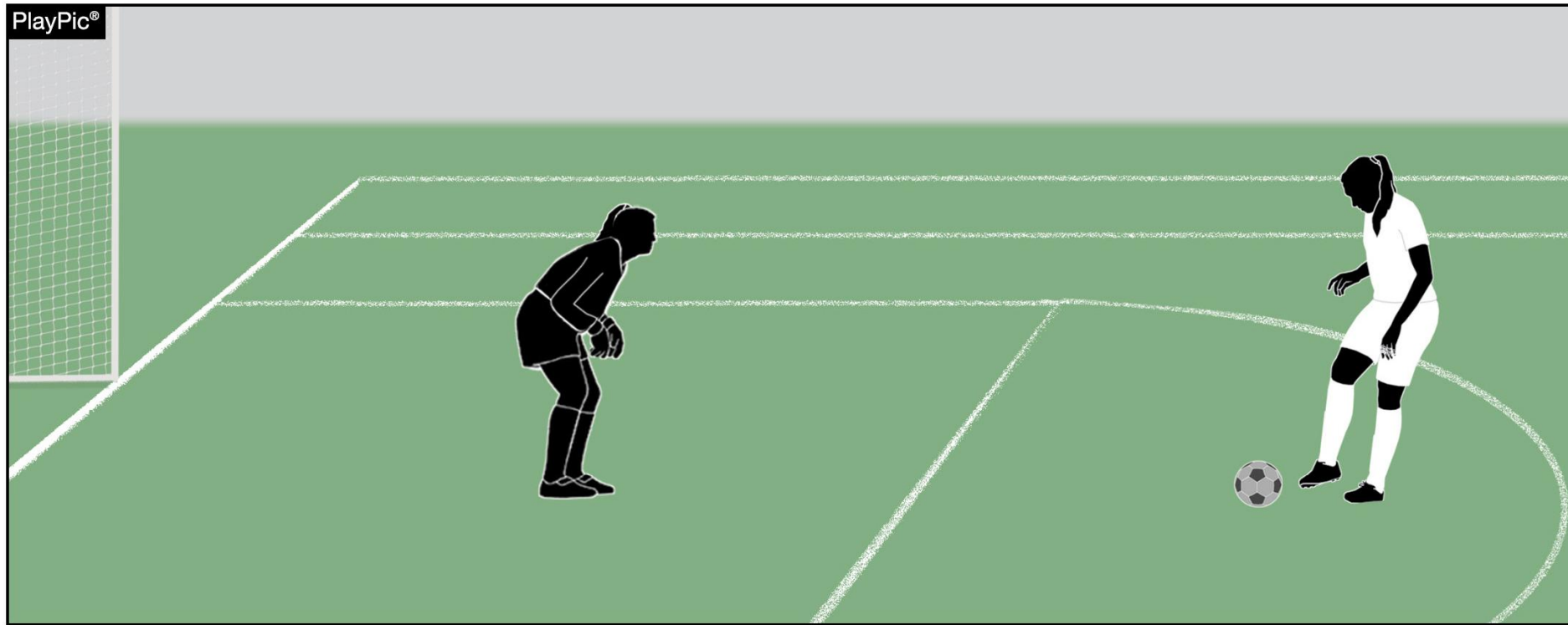


The head coach is responsible for conduct of their team, inclusive of all bench personnel in the team area. The head coach may be warned, cautioned or ejected for misconduct committed by bench personnel.



2025-26 EDITORIAL CHANGES

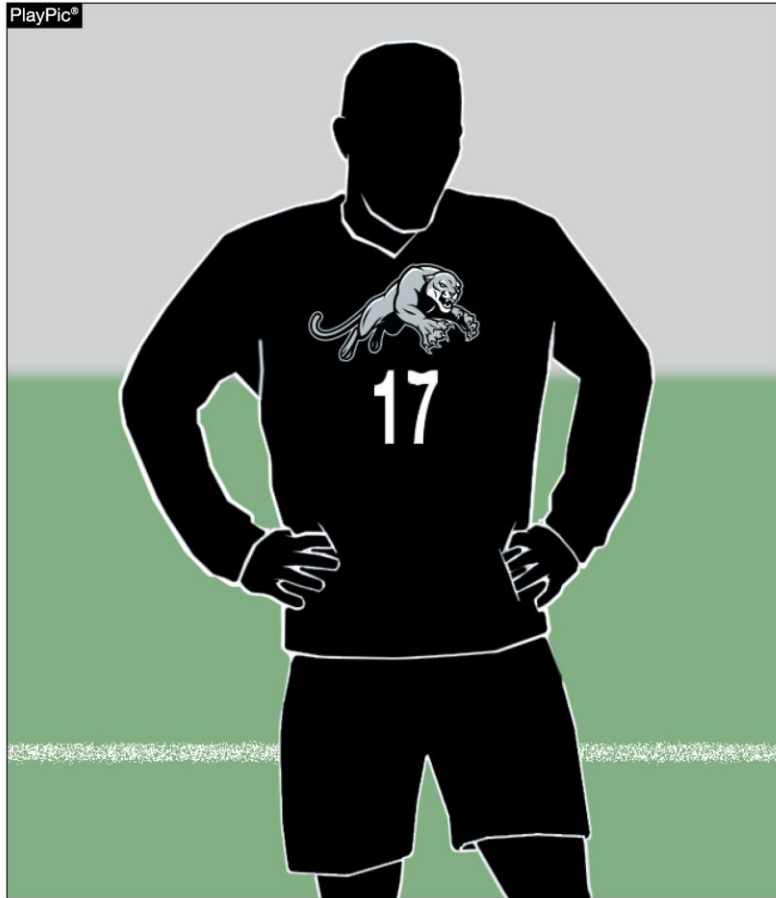
3-3-7 Substitutions



If a player is being replaced during a penalty kick situation, the substitute may not take the penalty kick.

REQUIRED UNIFORM

RULE 4-1-1c

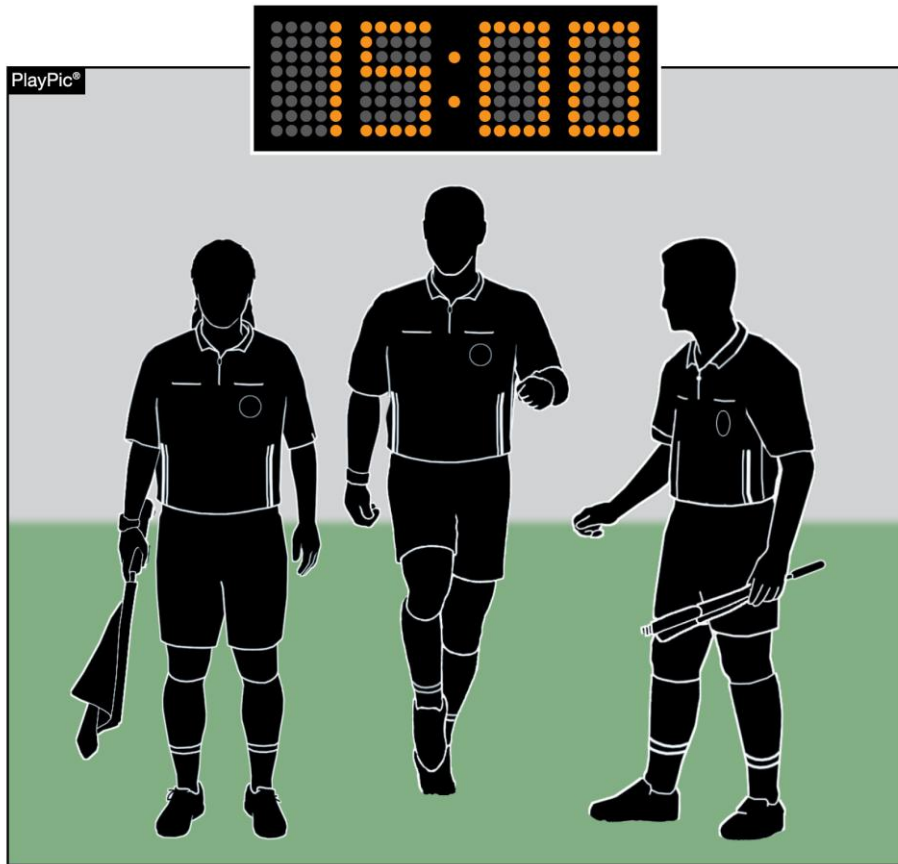


A school's nickname and/or mascot are permitted on a uniform, in addition to the school's name, logo and/or player's name.



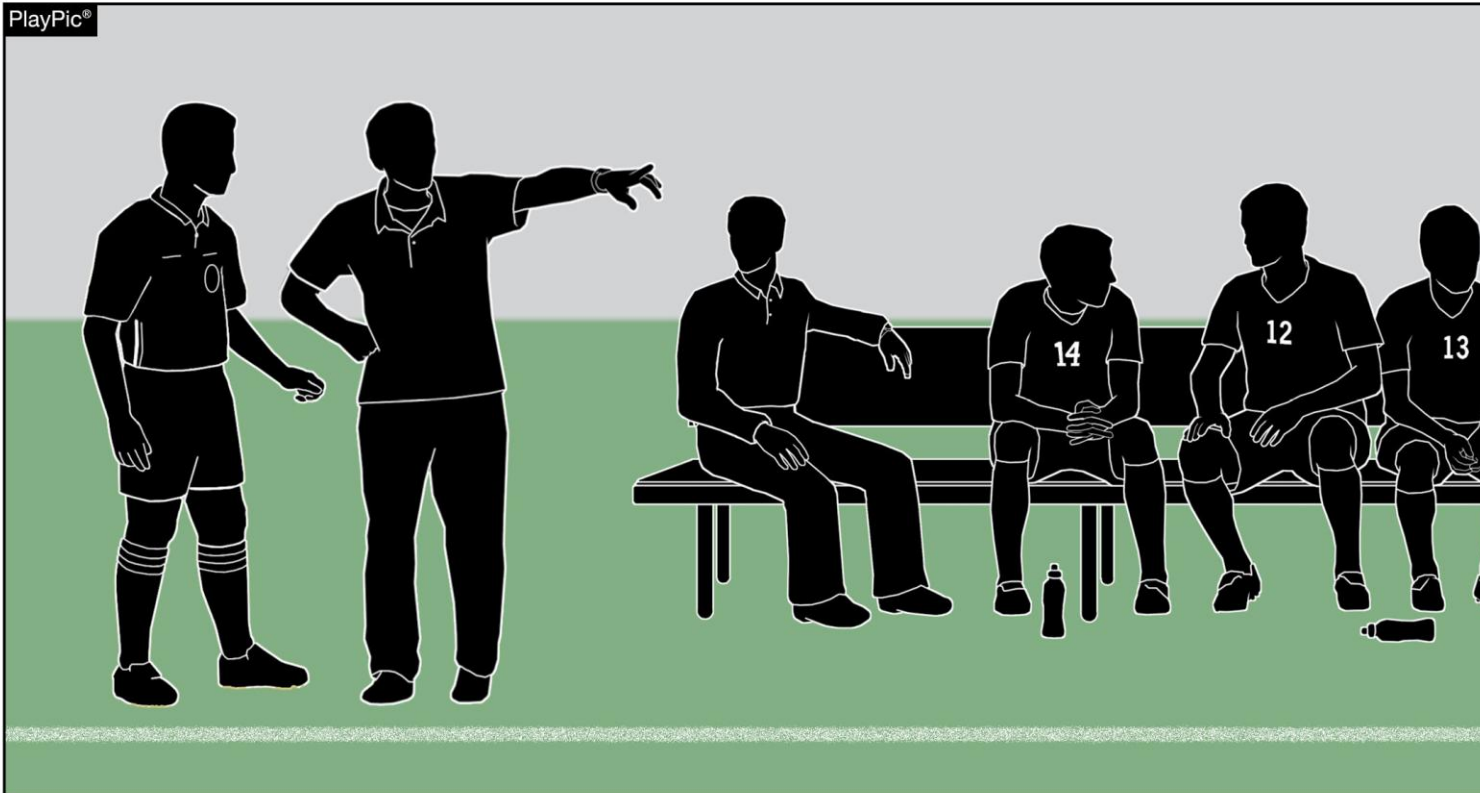
2025-26 POINTS OF EMPHASIS

COURAGE, CHARACTER AND CONSISTENCY



It is important for contest officials to conduct themselves in a professional manner that upholds the dignity of the position. This includes arriving on time, conducting the proper pregame, knowing and applying the **NFHS rules** properly, speaking to players and coaches in a professional manner, and completing any necessary postgame reports.

TEAM AREAS AND BENCH DECORUM

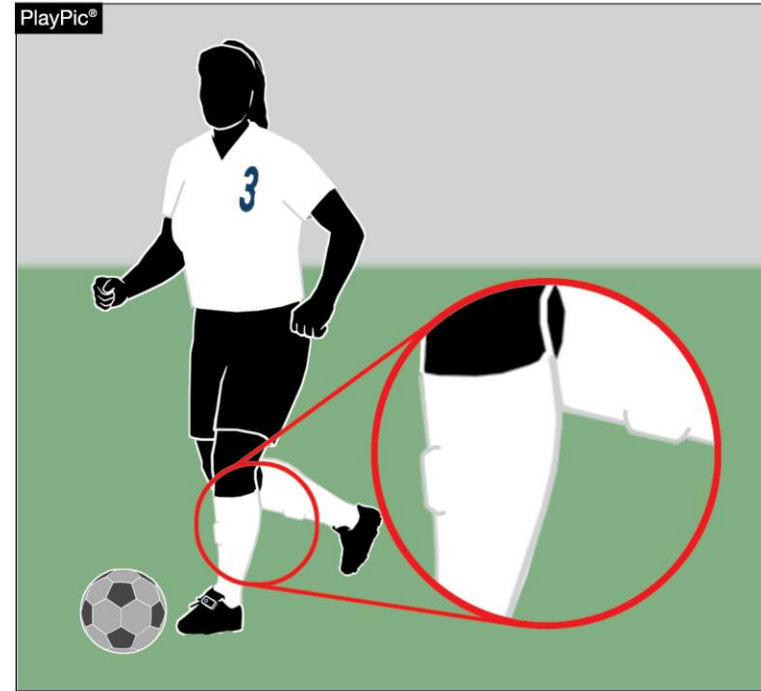
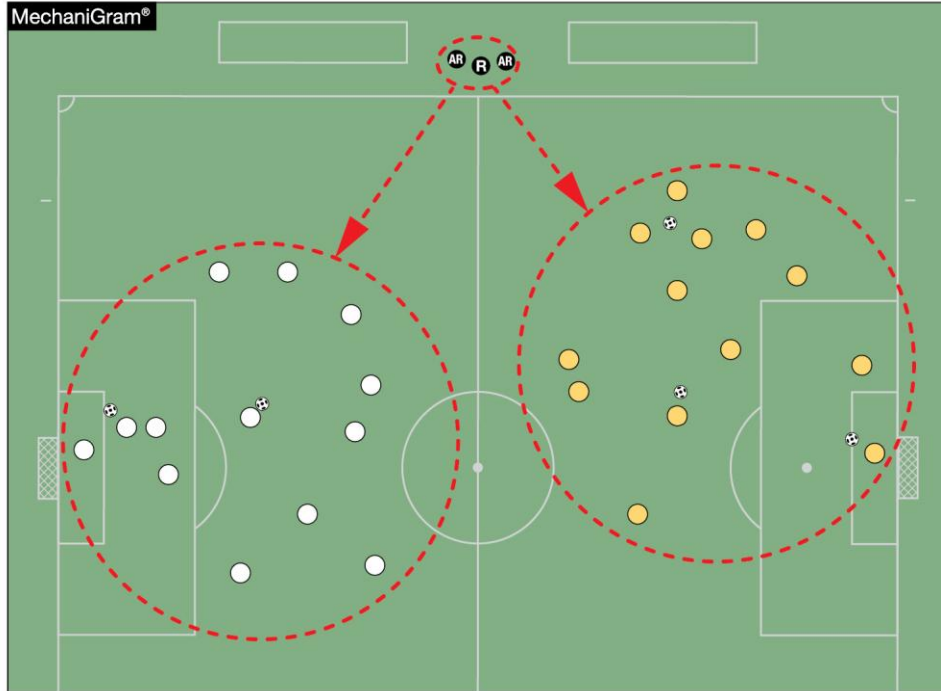


Effective communication and game management are essential. Recognizing and addressing dissent early is crucial — public, provocative and/or persistent complaints must be dealt with decisively.

The official's role is to keep the game safe and fair.

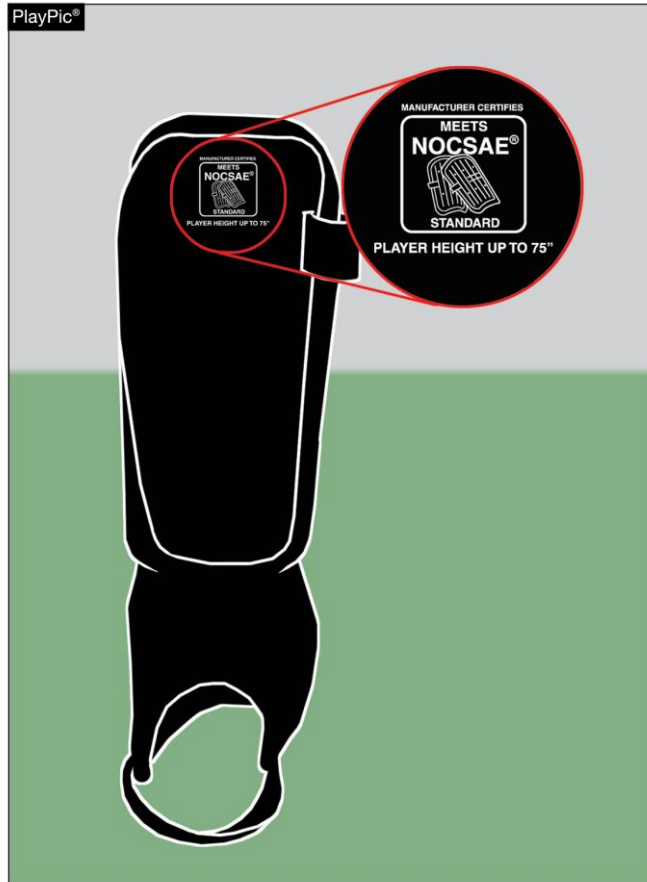
Coaches set the tone for their teams. Adult leaders must be champions of character.

UNIFORM/EQUIPMENT REQUIREMENTS

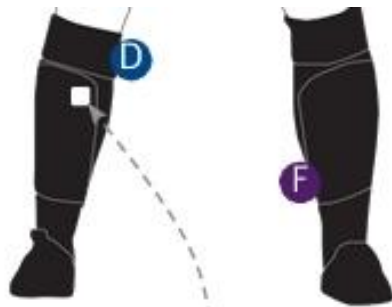


Student-athlete safety is a priority, and that starts with players wearing proper uniforms and equipment. Specifically, **players are required to wear shinguards** suitable for their age and size. **This is a non-negotiable item in the NFHS**, not a player's or coach's decision.

UNIFORM/EQUIPMENT REQUIREMENTS



Shinguards must have a NOCSAE seal and information about height requirement. The coach is responsible for ensuring their players adhere to this and referees must enforce the rule. Referees should inspect and, if needed, correct the issue in a professional manner. Officials should also be on the lookout for players with micro guards. **No one is to play at the NFHS level with illegal or improper shinguards.**



Manufacturer Certifies



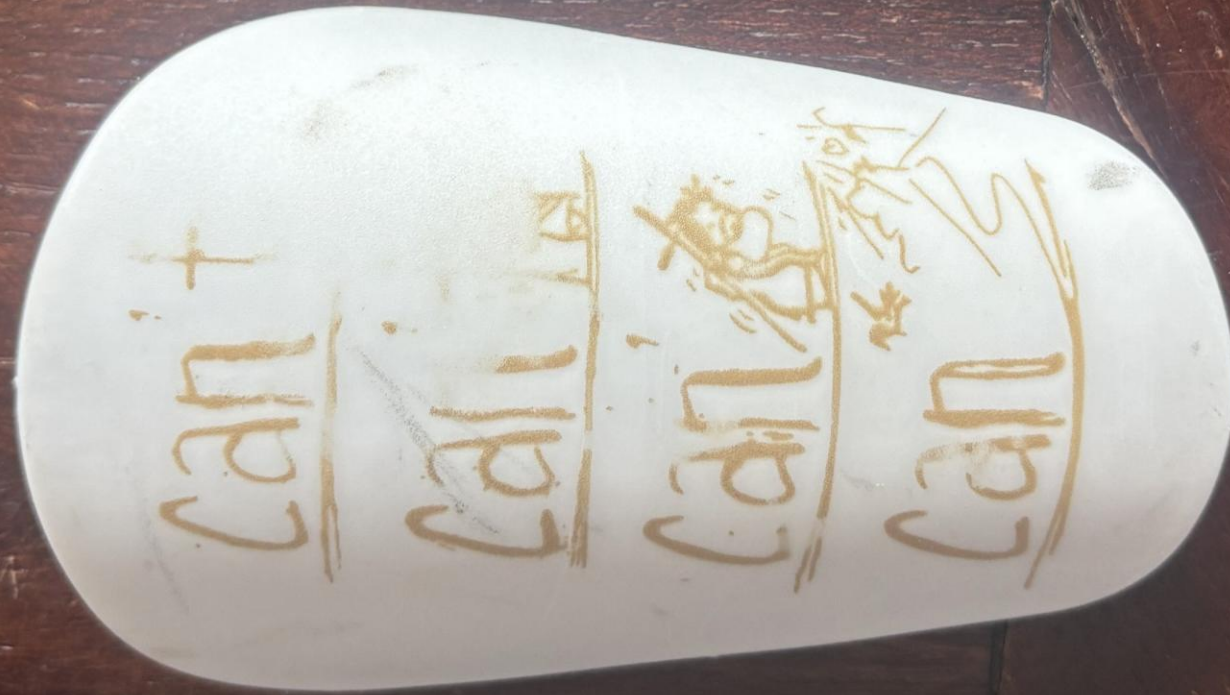
F

SHINGUARDS

1. Professionally manufactured.
2. Age- and size-appropriate.
3. Worn under socks.
4. Worn with bottom edge no higher than 2 inches above the ankle.
5. Must meet NOCSAE Standards at time of manufacture.
6. NOCSAE seal and height range permanently marked on front of shinguard.
7. May not be altered.



**BE ON LOOKOUT FOR MICRO SHIN GUARDS
ABSOLUTELY NO MICRO SHIN GUARDS PERMITTED**



UNIFORM/EQUIPMENT REQUIREMENTS

- Shinguards must have a NOCSAE seal and information about height requirement.
- The coach is responsible for ensuring their players adhere to this and referees must enforce the rule.
- Referees should inspect and, if needed, correct the issue in a professional manner.
- Officials should also be on the lookout for players with micro guards.
- **No one is to play at the NFHS level with illegal or improper shinguards.**

Nassau County Soccer Officials Association



A rectangular brown doormat with a coarse, fibrous texture. The word "WELCOME" is printed in large, bold, black capital letters across the center of the mat.

WELCOME

NEW MEMBERS!



NCSOA MEETING PROTOCOLS



A close-up photograph of a wooden gavel lying diagonally across the frame. The gavel has a smooth, polished head and a slightly textured handle. It rests on a dark, weathered wooden surface with visible grain and texture. In the lower portion of the image, there is a solid red rectangular box containing the word "BYLAWS" in white, bold, sans-serif capital letters.

BYLAWS

CALL FOR NOMINATIONS



**NOMINATIONS
OPEN
THURSDAY,
SEPTEMBER
4TH**



**NCSOA
ELECTIONS
2025 – 26**

**Monday
September
15th**



GAME DAY PROTOCOLS

REMINDERS

- **BEFORE MATCH, CONTACT**
 - **HOME SCHOOL** *CONFIRM LOCATION & TIME*
 - **PARTNER** *CONFIRM COLORS, LOCATION TO MEET (30 minutes B4 kickoff)*
- **WAIT FOR PARTNER** If Late, Call or Text Partner
- **CONDUCT PRE-GAME** DETERMINE HEAD OFFICIAL
- **20 MINUTES PRIOR TO MATCH PROCEED TO FIELD**
 - **WALK FIELD CHECK FIELD - GOALS, CORNER FLAGS – GAME BALLS (MIN. 3)**
(WALK TOGETHER, CONDUCT PRE-GAME IF NO CHANCE PRIOR)
 - **AS YOU'RE WALKING FIELD TRY AND OBSERVE PLAYER EQUIPMENT (SHIN GUARDS)**
 - **APPROACH COACHES, BOTH REFEREES INTRODUCE THEMSELVES, HEAD OFFICIAL ASKS, RECEIVES ROSTER (MUST HAVE AT ALL LEVELS)**
- **5 MINUTES PRIOR TO KICKOFF, FOLLOW SPECIFIC PROCEDURE FOR HEAD COACHES & CAPTAIN'S MEETING**
- **FOLLOWING MEETING, EACH OFFICIAL GOES TO ONE TEAM, MUST READ SPORTSMANSHIP CARD TO THE TEAMS, ALL PLAYERS, COACHES & BENCH PERSONNEL**



**Addressing
Player Equipment
SHIN GUARDS**

Pre-Game Procedures - Player Equipment SHIN GUARDS

- 5 Minutes BEFORE Scheduled Kickoff, **Head Referee BLOW Whistle**, Clear Field
 - Call for Captains & **HEAD COACHES** of **BOTH Schools**; Bring them to Midfield
 - **BOTH REFEREES (OR CREW) ARE TO BE PRESENT**
- Head Referee addresses EACH HEAD COACH, stating the following:
 - Begin with Visiting Team; "Coach...Are all your players properly equipped, and will remain so from now through the completion of the match, including all players wearing shin guards which are age-and-size appropriate" (Coach Responds "YES")
 - Repeat to Home Coach; "Coach...Are all your players properly equipped, and will remain so from now through the completion of the match, including all players wearing shin guards which are age-and-size appropriate" (Coach Responds "YES")
 - Excuse BOTH Head Coaches at this point
- Continue Pre-Game Conference with Captains



LATE START FORMS



MISCONDUCT PROTOCOLS & PROCEDURES





NCSOA MISCONDUCT REPORTING

YC

ONE OFFICIAL ONLY



Go to our website

www.nassausoccerofficialassociation.com

Click on NCSOA misconduct report

Complete form.

One form per YC/RC incident.

RC

ONE OFFICIAL ONLY

BOTH OFFICIALS



***CALL Steve Danisi
516 – 263 - 9318***



Go to our website

www.nassausoccerofficialassociation.com

Click on Sec VIII unsportsmanlike incident
report and complete.



BOCES UPDATE

NEW CONTRACT

- **Rates**

- **\$6.00 Increase 25 - 26**

- **Varsity = \$ 141.00**

- **JV = \$122.00**

- **Modified = \$105.00**

- **\$4.00 Increase 26 – 27 & 27 - 28**

- **Ratings**

- **3-man Certification**



TREASURER'S REPORT




FALL 2026
\$125.00
DUE BY
11/1/25



DASA

Dignity
for All
Students Act



The background image shows the exterior of a restaurant named 'Patrizia's of Long Island'. The building has a light-colored brick upper section and large glass windows on the ground floor. A large, red, stylized sign for 'Patrizia's of Long Island' is mounted on the brick part of the building. To the left of the sign, a large basket of pink flowers hangs from the building. The sky is blue with some light clouds. In the foreground, there is a dark metal pole. The text 'ANNUAL DINNER' is centered over the image in white, bold, sans-serif font. Below it, 'WEDNESDAY, NOVEMBER 19th' is also in white, bold, sans-serif font. Below that, 'PATRIZIA'S MASSAPEQUA PARK' is in white, bold, sans-serif font. At the bottom, '7:00 PM' is in white, bold, sans-serif font. To the left of the main text, there is a small sign that says 'FDC' and another one that says 'NAYS'.

ANNUAL DINNER
WEDNESDAY, NOVEMBER 19th
PATRIZIA'S MASSAPEQUA PARK
7:00 PM

Congratulations!



BOBBY BALDWIN OFFICIATING AMPUTEE GOLD CUP 2025 MEXICO

TOM CULLY SELECTED NASSAU COUNTY ATHLETICS HALL OF FAME CLASS 2025





**ALL VARSITY
JV SPLIT &
JV SWING
MUST REMAIN
3-MAN CLINIC**



NEXT MEETING:

**THURSDAY,
SEPTEMBER 4th**

7:30 PM

MERRICK GOLF CLUB

**MODIFIED INTERPRETATION
NOMINATIONS**



GOOD LUCK & HAVE A GREAT SEASON !