

BH
BATTALION
HEREFORDS
CARA PARK

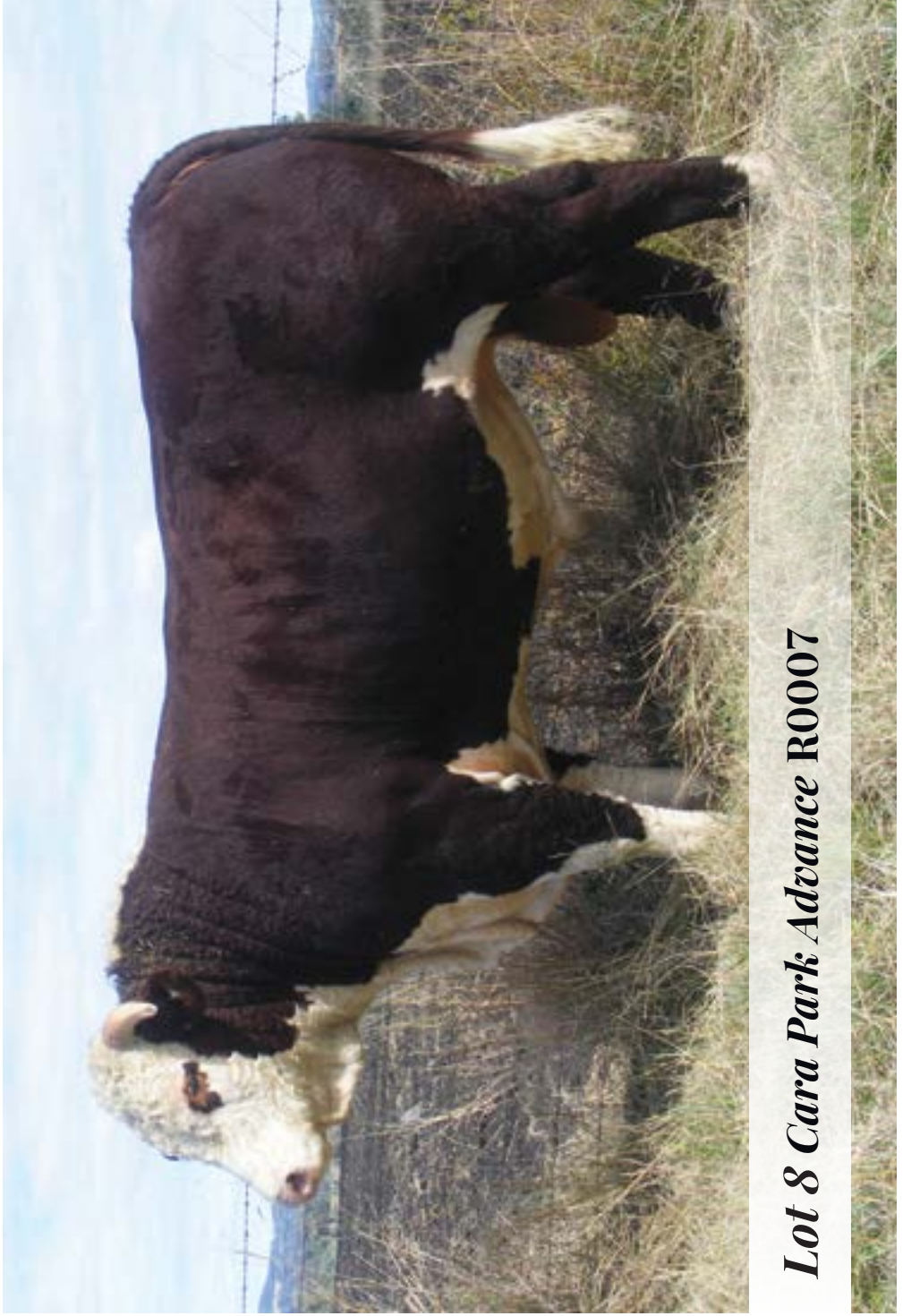
EST. **HEREFORDS** 1975



4th
Annual

Battalion & Cara Park Bull Sale
Mon 4th July 2022 - 1pm
Glen Innes Showground





Lot 8 Cara Park Advance R0007

Fourth Annual Battalion & Cara Park Bull Sale

SALE MONDAY 4TH JULY 2022
Sale at 1pm, Inspection from 10am
Offering 30 Hereford Bulls

Complimentary lunch provided



Grant & Kylie Kneipp
T/AS GE & KM Kneipp
“Wattle Dale”
1259 Nine Mile Road
Dundee NSW 2370

Ph: 02 6734 4134

Mob: 0428 726 771

grant@battalion.com.au

www.battalionherefords.com.au



Graeme & Natalie Newnham
T/AS JE Newnham & Co
“Cara”

285 Reserve Creek Road
Myall Creek, Delungra NSW 2403

Ph: 02 6723 6446

Mob: 0428 236 446

g.n.newnham@gmail.com



AUCTIONEER
Paul Dooley
0458 662 646



Colin Say & Co. Pty Ltd

rmanetwork Accredited Member

AGENTS

Nathan Purvis 0427 324 078
Shad Bailey 0458 322 283
Craig Thomas 0428 669 500
Steve Daley 0400 406 667

HOW TO REGISTER with

ELITE LIVESTOCK AUCTIONS



Simply go to www.elitelivestockauctions.com.au using your desktop, laptop, iPad, iPhone or android device.



Click on the **"Sign Up"** page / link



Create a bidding profile using the bidder registration page. *(You can either register as a livestock agent, company or private buyer)*



Agree to the Elite Livestock Auctions Terms & Conditions and the Selling Agents Sale Terms & Conditions as printed in the official Sale Catalogue



Click **"Register"**



You will then be notified by email that an account has been created.



Once an account has been created you are all **"Set to Bid"**



Each Auction can then be viewed by clicking **"Live Auction"** logo on the Elite Livestock Auctions website.



Once you receive email notification that your account has been created please go to the sale you wish to bid at and click **"Request to Bid"**



The sale will then approve your application to bid and on the sale catalogue you will see **"✓ Bid Request Approved"**



On Sale day simply login, click **"Enter Auction"** on the catalogue page and you can start bidding. *(There is no need for software download)*



At the completion of the auction, invoicing will be carried out as per your registration details by the Selling Agents.

Having trouble registering and logging in?

1300 259 742



Elite Livestock Auctions ABN 19604 627 607
Level 19, 123 Eagle Street, Brisbane, QLD 4000

P : 1300 259 742 F : 07 3041 5053
www.elitelivestockauctions.com.au

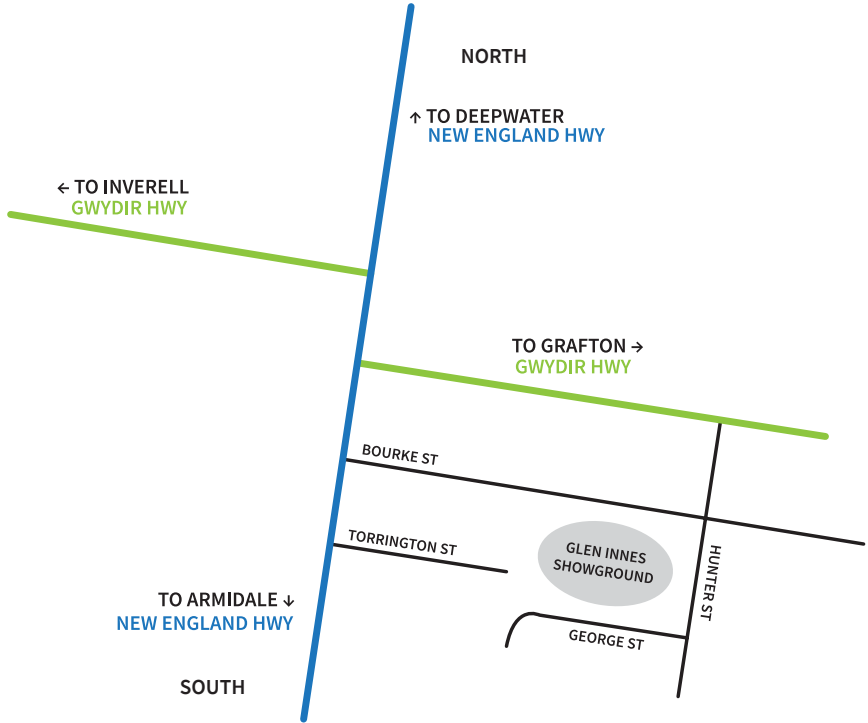
Sale Location:

Glen Innes Showground

Torrington St, Glen Innes NSW 2370

Entry to the showground is by Torrington Street gate

Truck entry via Hunter Street



*car entrance off
Torrington Street*

*truck entrance
off Hunter Street*



Sale Information

INSPECTION

Bulls are available for inspection from 10am on sale day. We encourage inspection of both Battalion and Cara Park bulls on property prior to sale day by appointment. This gives you the opportunity to view the bulls in their natural environment and possibly inspect other animals in the pedigree to assist you in making your decision. **Battalion Herefords will also be holding an on property open day on Monday 27th June 2022, 9am to 4pm.**

BUYERS REGISTRATION

The Buyers number system will be in operation. All prospective purchasers are asked to register prior to the sale.

ONLINE & PHONE BIDDING

If you are unable to attend on the day, the sale will be conducted in conjunction with Elite Livestock Auctions. Please refer to page 4 for further information. Phone bidding can be arranged through Colin Say & Co or your preferred agent.

VISITOR SAFETY

All of the sale bulls have been screened for temperament and are a quiet under normal circumstances, however **Visitors enter the cattle pens at their own risk. Children/Prams must not enter the sale pens.**

DISABLED ACCESS

Disabled access is available at the showground and into the stands at the sale yards.

OUTSIDE AGENT REBATE

A rebate of 2% is offered to outside agents who introduce buyers to the selling agent in writing at least 24hrs prior to the sale and settle accounts on the purchaser's behalf within 7 days of the sale

GST: All animals are sold exclusive of GST. GST is added to your invoice.

TRANSPORT

Carriers will be available on sale day. If you wish to bring your own truck, we will accommodate the release of your animal at the completion of the auction. All animals need to be transported from the sale venue by 5pm Tuesday the 5th of July 2022 unless prior arrangements have been made with the vendors. Formal possession, risk and expenses pass to the buyer at the fall of the hammer. We recommend having a quiet animal (e.g. cow, steer etc.) yarded and ready to greet your bull when he arrives home to minimise stress on the bull and help it adjust to its new environment.

INSURANCE

Bulls are a valuable and vulnerable asset to your business. We highly recommend insuring your new purchase at the completion of the sale. Insurance will be available on site.

Please bring your catalogue to the sale



Recommended Accommodation:

Rest Point Motor Inn

72 New England Hwy, Glen Innes NSW 2370

Ph: (02) 6732 2255

www.restpointmotel.com.au

Book direct and mention our sale for best rates

Camp at the Glen Innes Showground

Campers with pets, or travelling with horses are always welcome. Reasonable overnight rates and available for large groups.

The Showground is close to all Glen Innes town facilities, in a quiet off-highway location. It is easy to access with large vehicles and caravans.

www.gleninnesshowground.com

RPG
Rest Point Group

**Rest Point Motor Inn
Hereford Steakhouse
Char Grill**

The only choice in Glen Innes...

A place to sleep ~ A place to eat ~ A place to meet ~ A place to celebrate

Ph: 02 6732 2255

72 New England Hwy
Glen Innes NSW 2370

<https://restpointmotel.com.au/>
info@restpointmotel.com.au



Herd Health

BATTALION – HERD HEALTH

All registered Battalion bulls have been sire verified and tested negative for Pestivirus.

They have received:

Demize 10/5/22

Strategik 10/5/22

Booster Vaccinations Due:

7 in 1 – Booster due Aug 2022

BEF Vaccine (3 day sickness) – Booster due Jan 2023

CARA PARK – HERD HEALTH

All Cara Park bulls have been tested negative for Pestivirus

They have received:

BEF Vaccine (3 day sickness) / February 2022

Vibrio / April 2022

7 in 1 booster / April 2022

Cydetin Pour-on

Hereford Group Breedplan

The Breedplan values in this catalogue were calculated in the 2020 Hereford Group Breedplan evaluation. Each reported trait shows an EBV (estimated breeding value) and its accuracy level. The EBV provides the current estimate of the bulls genetic merit for that trait, relative to the overall base for the Hereford breed. It indicates how its progeny should perform relative to those of other bulls in the breed. The accuracy of an EBV will be higher for traits with higher heritability and will increase as more performance information on an animal and its relatives become available. The Accuracy of an EBV is reported as a percentage. EBV's with higher accuracy will change less than EBV's of low accuracy when more performance records are analysed.

EBV Percentile table (abbreviated) for Hereford Animals born in 2020

Percentile Band	Weight Traits				Milk	Carcase Traits				
	BW	200	400	600	MILK	EMA	RIB	RUMP	RBY	IMF
Breed	+2.5	+33	+55	+78	+17	+3.8	+0.8	+1.0	+0.8	+0.6
Avg	KG	KG	KG	KG	KG	SQCM	MM	MM	%	%

Performance supplements for beef cattle



Deliver protein and minerals to optimise production

Improving results in beef cattle systems requires year-round nutrition planning. Performance Feeds provides convenient, custom nutrition supplements that optimises available forage, minerals, and protein for herd health and profitability:

Anipro

Liquid Supplements

- Molasses based liquid supplement
- Provides essential protein, minerals and vitamins
- Up to 27% improvement in forage intake
- Fully serviced PCAS approved program saves time and money

WeatherPro

- Waterproof and highly palatable loose lick
- Effectively manage mineral and vitamin deficiencies
- Suits all classes of grazing cattle
- Improve fertility, growth and immunity

Call 1800 300 593
performancefeeds.com.au



PERFORMANCE
FEEDS



Welcome to our 4th Annual Battalion & Cara Park Bull Sale to be held on Monday 4th July at 1pm EST at the Glen Innes Showgrounds. Inspections from 10am.

Over the past year we have seen strong and consistent prices within the agricultural industry. This region has seen steady rain providing a positive outlook for the winter months ahead.

We are very pleased with the draft of bulls we have on offer for this year's sale. We continue to focus on selecting breed leading genetics that perform for us and can add financial gain for the commercial and stud breeder.

Elite Livestock Auctions again provide an online bidding platform as an option for those unable to attend the sale. Also, there will be agents available on sale day should you wish to bid via phone.

The bulls have all passed a Bull Breeding Soundness Evaluation by a certified Veterinarian.

We welcome and encourage on farm inspections and are happy to discuss any animals at your convenience.

Looking forward to seeing you either before or at this year's sale.

Grant, Kylie, Graeme & Natalie



www.jamesiesfuelandfix.repco-service.net

Ph: 02 6732 1171



MVRL35318

All new car Servicing
(Retaining your Statutory Warranty)

Wheel Alignments

Batteries

Child Restraints

Roadworthy Inspections

Brake & Clutch Services

Exhaust Repair & Manufacture

4x4 Exhaust Systems

Norco Rural Glen Innes

Has everything you need for a Happy Health Herd



- Animal Health & Nutrition
- Wide range of Norco Stockfeed
- Seed & Ag Chem
- Fencing Materials
- On-Farm advice



When you shop with Norco Rural you're supporting Aussie farmers, not overseas investors .. That makes great sense!

Norco Rural is proud to support the Annual Battalion and Cara Park Herefords Bull Sale

Glen Innes 165 Lang Street Ph: 6739 7400

Norco Rural - Because there's a farmer in all of us

Norco - an Australian, farmer owned dairy co-operative since 1895





Our History

Four generations of proud Hereford breeders have called our family property home. “Wattle Dale”, 37kms North East of Glen Innes is situated in a cool climate area of the high country in Northern NSW. A location well suited for the production of quality Hereford cattle.

I have been a passionate Hereford breeder since my earliest memories as a child and purchased my first stud female (Emu Hills Cath S724) at the age of 14. In 2006 the Battalion stud was registered and further stud females were purchased from dispersal sales in its early years of establishment. Subsequent females including Moorlands Cherry Ripe W155, Courallie Constance V086, Courallie PR Christian Y312 and Smithston Silky Z231 became just some of the foundation females of the stud and to this day two of those cows have proven to be some of the most influential females within the Battalion herd. Our two most prolific female lines Constance and Cherry Ripe are still producing our top animals each year.

Realising how valuable some of our original females were proving to be, we decided to begin flushing our elite matrons with great results. This has allowed us to dramatically lift our bottom line. No expense was spared in developing our herd with a solid foundation of elite females. Purchasing the best on offer from dispersal sales and then flushing those individuals is the method that has dramatically accelerated our rate of improvement and subsequently been a major factor in delivering our strong sale results in recent years.

My wife Kylie and I now have a full house of cattle enthusiasts. Travis, Grace & Hailey all love cattle as much as we do and there are many debates on which cow is better. More so now than ever our business needs to be successful. Not only are we passionate about producing seedstock, it is our bread and butter. We pride ourselves on our customer service and back our genetics to deliver. We look forward to seeing you at the 4th annual Battalion & Cara Park Bull Sale.

Grant Kneipp



CARA PARK

EST. **HEREFORDS** 1975

Our History

We have been breeding registered Herefords for 47 years for structural soundness doing ability and on farm performance.

The Cara Park Hereford stud was founded in 1975 with the purchase of a small group of cows & heifers from the famous Bexley stud. These were quickly followed by females from renowned studs such as Windsor, South Caramut, Hillcrest, Thornleigh & Alma Downs.

Windsor Maurice (Grand Champion 1972 Sydney Royal Show), after being retained for use by the Windsor Hereford stud was purchased as a foundation sire. Two years later (during the Beef price slump) in September 1978 we purchased Yarram Boswell at the age of 18 months from Yarram Park. Boswell played an important part in the early development of our stud. We used Boswell for nine joining seasons and sold him as an aged sire for almost double his original purchase price. Over the next few years sires used of note were Invernaion Yukon who sired Cara Park Impact selling at the 1985 Annual Glen Innes Hereford Bull Sale for top price in the unled section to Iolanthe Hereford stud. After securing a quarter share semen rights in Injemira Quest we commenced an annual AI & ET program, Quest left us with a terrific line of females. Also used in our AI program very successfully was Injemira Outback, a son Cara Park Playboy selling for top price at the 1992 Glen Innes Bull Sale to Bundarra Hereford stud.

Since then, over the years we have used the very best genetics available including Yarram Energizer P241 (top price 1996 Wodonga Bull Sale) sire of Cara Park Xpress T311 who sold for a new record price at the Glen Innes Bull Sale in 2000 to Charvel, Yavenvale & Bowmont Hereford Studs. Academy Columbus (Sydney Junior Champion 1993, Senior & Grand Champion 1994). Yarram Pompeii V055 used by AI, with sons selling to Amos Vale, Curracabark & Red Hill studs. Yavenvale Freedom Z008 (top price Yavenvale Annual Sale 2006), sire of Cara Park Freedom C727 selling at the Glen Innes Bull Sale 2009 to Foxforth Hereford Stud. These bulls were followed by two more AI sires in Injemira Advance V093 sire of Cara Park Advance B631 selling at Glen Innes 2008 to Emu Holes Hereford stud. Also, Bowmont Storm C093, he has been one of the most influential sires used in our herd, leaving us with big roomy productive females. Mawarra Unique C041 (Grand Champion Wodonga 2009) sire of Cara Park Unique J324 the record selling bull at the 2015 Annual



Cara Park Xpress T311



Glen Innes Hereford Bull Sale selling to the Ardno Hereford Stud, J324's dam is by Storm C093. Also by Mawarra Unique C041 out of Storm C093 cows and selling for the second top price at their respective Annual Glen Innes Hereford Bull Sales, 2017 & 2018 was Cara Park Unique L581 selling to Avon View Hereford Stud & Cara Park Monarch M647 to Battalion Hereford Stud. The Unique / Storm cross has proven to be a very successful one, producing progeny with moderate birth weight, high growth and excellent carcass, these traits are major profit drivers for the beef producer. At the 2013 Glen Innes Bull Sale we purchased the top priced bull in Battalion Buckshot G02, from his first crop of calves a son Cara Park Buckshot K490 sold in 2016 for the third top price of that sale to Hylands Hereford Stud.

Sires introduced in recent years are Glendan Park Knockout K160, (Junior & Grand Champion 2016 Wodonga Bull Sale) he has four sons in this year's sale. Talbalba Advance L131 (Top price Horn bull at the 2017 Annual Talbalba Bull sale) has six very good bulls catalogued for this year's sale. EDR Mojo M164 (Intermediate Champion & second top price at 2018 Wodonga Bull Sale). He has six sons catalogued for this sale.

In August 2020 we were fortunate to secure a new sire for our breeding program that we believe will advance our herd greatly on many fronts. Talbalba Emperor P043 represents the extremely rare combination of exceptional phenotype, performance, and carcass data. We have used Emperor P043 extensively in his first two joining seasons. He has bred to our high expectations, producing 18 young weaner bull prospects for the 2023 bull sale.

Our Hereford cattle are run in conjunction with a merino sheep operation under commercial conditions. We are proud of our cattle and welcome enquiries and on property inspections.

We also look forward to seeing you on sale day.

Kind Regards

Graeme, Natalie, Harry, Jack & Jane.



*Run with Deere.
Live the dream.*



**Equipment Sales,
Parts, Service
and field support**

LARGE TRACTORS
GATOR UTILITY VEHICLES
MOWERS
UTILITY TRACTORS
PLANTERS
SLASHERS & IMPLEMENTS



12 Swanbrook Rd Inverell NSW 2360
02 67282800 | RDOequipment.com.au

ENQUIRE TODAY

**Achmea Farm Insurance,
Australia's specialist farm insurer,
is delighted to support the
2022 Battalion & Cara Park Bull Sale**



“With competitive rates, insure your stud bulls with Achmea Australia today. To finalise your cover, contact me directly.”

MATTHEW WILSON, Farm Insurance Specialist
0427 813 972 | matthew.wilson@achmea.com.au

[achmea.com.au](https://www.achmea.com.au)

Insurance issued by Achmea Schadeverzekeringen N.V. (Achmea) ABN 86 158 237 702 AFSL 433984. The information in this advertisement or article is general advice only and does not take into account your individual objectives, financial situation or needs (your personal circumstances). Before using this information to decide whether to purchase the insurance policy, you should consider your personal circumstances and the relevant Policy Wording available from the 'Downloads' section of our website www.achmea.com.au.

Cara Park Monarch M647

(H)



D.O.B.
12/07/2016

Rego No.
JENM647

Reference Sire

GH DIFFERENCE BRITISHER 45L (IMP CAN) (H)

GH NEON 17N (IMP CAN) (H)

GH SIR SIMBA LASS 107K (H)

SIRE: MAWARRA UNIQUE C041 (AI) (H)

MAWARRA KAHLUA (AI) (H)

MAWARRA MINERVA 554 ET1 (AI) (ET) (H)

MAWARRA MINERVA 357 (H)

GLENDAN PARK STORM W134 (H)

BOWMONT STORM C093 (H)

BOWMONT MARITANA W168 (AI) (H)

DAM: CARA PARK WONDER L H220 (AI) (H)

CARA PARK PLAYBOY K672 ET1 (ET) (H)

CARA PARK WONDER LASS C714 (AI) (H)

CARA PARK WONDER L Z424 (H)



BW	200	400	600	MCW	Milk	SS	CWT	EMA	Rib	Rump	RBV%	IMF%
+5.3	+42	+81	+112	+99	+18	+1.6	+86	+7.8	-1.1	-0.9	+2.9	+0.8
84%	78%	79%	81%	72%	63%	83%	70%	62%	65%	69%	62%	64%

INDEX: Southern Self-Replacing +\$181 Northern Self-Replacing +\$164 Southern Baldy Maternal +\$179 Northern Baldy Terminal +\$138

TRAITS OBSERVED: BWT,200WT,400WT,600WT,SS,FAT,EMA,IMF,Genomics **GENETIC CONDITION:** HYF,IEF,DLF,

NOTES: REFERENCE SIRE. Monarch was purchased for \$16,000 by Battalion Herefords in 2018. We selected him for his overall power and performance with the addition of perfect feet. He breeds curve bending growth with extremely good carcase merit. His progeny have been highly sought after by stud and commercial breeders, siring last years top price bull and the highest average for the sires represented.

Battalion Black Hawk K7

(H)



D.O.B.
13/09/2014

Rego No.
BHEK7

Reference Sire

REEDY CREEK DEBONAIR 206 (H)

KAROONDA LINGO (AI) (H)

KAROONDA MINERVA 89 (H)

SIRE: SOUTH BOOROOK BOMBAY (H)

COURALLIE ASCOT (AI) (H)

S BOOROOK BRIDESMAID D34 (AI) (H)

S BOOROOK BRIDESMAID Z18 (H)

COOTHARABA MAGNUM (H)

MAWARRA VIRGINIAN (H)

MAWARRA CHERRY RIPE 263 (H)

DAM: BATTALION CHERRY RIPE 6 (AI) (H)

ONSLow SHARKA T019 (H)

MOORLANDS CHERRY RIPE W155 (H)

MOORLANDS CHERRY RIPE Q028 (H)



BW	200	400	600	MCW	Milk	SS	CWT	EMA	Rib	Rump	RBV%	IMF%
+4.9	+37	+68	+100	+89	+16	+1.8	+70	+4.7	+0.2	+0.8	+1.8	-0.5
94%	94%	94%	94%	84%	74%	89%	83%	72%	75%	81%	73%	77%

INDEX: Southern Self-Replacing +\$168 Northern Self-Replacing +\$154 Southern Baldy Maternal +\$182 Northern Baldy Terminal +\$136

TRAITS OBSERVED: BWT,200WT,400WT,600WT,SS,FAT,EMA,IMF,Genomics **GENETIC CONDITION:** HYF,DLF,IEF,

NOTES: REFERENCE SIRE.Sold in 2016 for the record top price of \$45,000 to Franco and Thornleigh Hereford Studs at the Glen Innes Bull Sale. A bull with an exceptional muscle pattern, emphasised by a broad flat top line and plenty of butt shape, an eye-catching sire who has proven to breed consistent draft leading animals at numerous studs. He scanned a raw IMF measurement of 6.5 at 21months of age. His Dam was one of our best and offered superior udder shape.

Courallie Kodiak K592

(AI)(H)



D.O.B.
09/08/2014

Rego No.
HH1K592

Reference Sire

GH NEON 17N (IMP CAN) (H)

MAWARRA UNIQUE C041 (AI) (H)

MAWARRA MINERVA 554 ET1 (AI) (ET) (H)

SIRE: YARRAM UNIQUE F181 (H)

BRAYBOOK UPPERCLASS U504 (AI) (H)

YARRAM FLOSSIE A096 (H)

YARRAM FLOSSIE R065 (AI) (H)

COORA CAMOOWEAL Q081 (AI) (H)

KIWI ZABEST Z3 (IMP NZL) (H)

KIWI LEONORA 101 (H)

DAM: COURALLIE Z3 PRUDENCE F214 (AI) (H)

COURALLIE YARRAM A230 (AI) (H)

COURALLIE A230 PRUDENCE C095 (H)

COURALLIE U105 PRUDENCE X169 (H)



BW	200	400	600	MCW	Milk	SS	CWT	EMA	Rib	Rump	RBY%	IMF%
+4.9	+32	+60	+89	+102	+17	+1.2	+56	+3.5	-1.0	-1.0	+1.3	-0.2
88%	83%	82%	84%	76%	63%	86%	74%	66%	70%	73%	66%	68%

INDEX: Southern Self-Replacing +\$118 Northern Self-Replacing +\$98 Southern Baldy Maternal +\$133 Northern Baldy Terminal +\$108

TRAITS OBSERVED: GL,CE,BWT,200WT,400WT,600WT,SS,FAT,EMA,IMF,Genomics **GENETIC CONDITION:** IEF,HYF,DLF,

NOTES: REFERENCE SIRE. Kodiak was purchased in partnership with Dundee Echp Park. He would be the deepest bodied bull we have used and breeds extra milk into his daughters.

Karoonda Taupo

(AI) (H)



D.O.B.
11/03/2016

Rego No.
SKSM336

Reference Sire

PUTE WAQAR (H)

PUTE DUSKY D16 (H)

PUTE BABS 106 (H)

SIRE: LOCHARBURN GERRY 11004 (IMP NZL) (H)

LOCHARBURN HIGH VOLTAGE 0055 (H)

LOCHARBURN BRYONIA 02124 (H)

LOCHARBURN BRYONIA S10 (H)

CHARNOCK HAYMAKER (H)

WALLAN CREEK HAYMAKER D225 (H)

WALLAN CREEK NECKLET W126 (H)

DAM: KAROONDA MARITANA H201 (H)

COOTHARABA INDUS 2 (H)

KAROONDA MARITANA A093 (H)

KAROONDA MARITANA 225 (H)



BW	200	400	600	MCW	Milk	SS	CWT	EMA	Rib	Rump	RBV%	IMF%
+6.0	+34	+51	+76	+80	+18	+2.4	+48	+2.9	+0.5	+1.1	+0.1	+0.7
87%	81%	81%	79%	70%	58%	79%	68%	55%	60%	65%	57%	58%

INDEX: Southern Self-Replacing +\$73 Northern Self-Replacing +\$54 Southern Baldy Maternal +\$54 Northern Baldy Terminal +\$39

TRAITS OBSERVED: GL,BWT,200WT,400WT(x2),600WT,SS,FAT,EMA,IMF,Genomics **GENETIC CONDITION:** IEF,HYF,DLF,

NOTES: REFERENCE SIRE.Taupo was purchased to introduce some outcross genetics that come from a herd with extra milk. He is extremely long and mobile with a naturally placid temperament.

Battalion Undertaker M023 (ET)(H)



D.O.B.
25/09/2016

Rego No.
BHEM023

Reference Sire

GH NEON 17N (IMP CAN) (H)

MAWARRA UNIQUE C041 (AI) (H)

MAWARRA MINERVA 554 ET1 (AI) (ET) (H)

SIRE: CARA PARK UNIQUE J324 (AI) (H)

BOWMONT STORM C093 (H)

CARA PARK TREASURE F037 (AI) (H)

CARA PARK TREASURE B607 (AI) (H)

SMITHSTON WEE DRAM ET1 (AI) (ET) (H)

ECHO PARK WARATAH (AI) (H)

ECHO PARK BETTY 23 (AI) (H)

DAM: BATTALION CONSTANCE 42 (H)

PARRAWEENA OCTAGONAL ET (ET) (H)

COURALLIE CONSTANCE V086 (H)

COURALLIE CONSTANCE P456 (H)



BW	200	400	600	MCW	Milk	SS	CWT	EMA	Rib	Rump	RBV%	IMF%
+7.5	+39	+67	+99	+101	+16	+1.6	+61	+4.8	-0.4	+0.1	+1.7	+0.3
76%	77%	77%	80%	71%	56%	79%	69%	56%	62%	67%	59%	63%

INDEX: Southern Self-Replacing +\$124 Northern Self-Replacing +\$104 Southern Baldy Maternal +\$120 Northern Baldy Terminal +\$95

TRAITS OBSERVED: BWT,200WT,400WT,600WT,SS,FAT,EMA,IMF,Genomics **GENETIC CONDITION:** DLF,HYF,IEF,

NOTES: REFERENCE SIRE. Undertaker sold to Newcommen Herefords for \$20,000 in 2018. He was a bull with exceptional length, depth and plenty of weight for age. His dam was one of our very best and bred many of our top sellers.



SUNDERLANDS

CLEANING SUPPLIES



At Sunderlands Cleaning Supplies, we offer a large range of products to cater to anyone's needs. We stock paper products, disposable packaging, cleaning chemicals, animal shampoo, janitorial equipment, Gulf Western oils, cleaning accessories, Bioguard pool chemicals and water testing. We also have a free delivery service throughout north-west NSW.



11B SWANBROOK RD, INVERELL - PH 02 6722 1130

EMAIL- admin@sunderlands.com.au

www.sunderlands.com.au

zoetis

KILL THE CATTLE PARASITES THAT COUNT

Cooperia spp. infections can decrease average daily weight gain by 7.5%¹

Cooperia spp. (Small Intestinal worm) is the most prevalent worm type in Australia.

65%
of worms are
Cooperia
spp.²

Dectomax has broad spectrum efficacy and provides outstanding persistent days of activity on both *Cooperia* spp. and *Ostertagia ostertagi* (one of the most pathogenic worms), as well as other key cattle worms*. Injectable and Pour On available.



Identify the mixture of worm types in your local area:
www.wormtrax.com.au

¹ Kloosterman A, Albers G, van den Brink R. Negative interactions between *Ostertagia ostertagi* and *Cooperia oncophora* in calves. Veterinary Parasitology. Vet Parasitology 1984; 15: 135-150. ² Australian national average of FEC results from 70,000 dung samples. Wormtrax™ - wormtrax.com.au

*Refer to product label for registered claims.

Zoetis Australia Pty Ltd, ABN 94 156 476 425, Level 6, 5 Rider Boulevard Rhodes, NSW 2138. © 2019 Zoetis Inc. All rights reserved. ZL1080_03/19



AVAILABLE AT YOUR
LOCAL RURAL SUPPLIER



LivestockSolutions Information in your hands

ZOETIS.COM.AU/LS

Warwick Court Riverview R170 (H)



D.O.B.
09/08/2020

Rego No.
WCPRI70

Future Sire

MELVILLE PARK ASTON A367 (H)

YAVENVALE LOCKDOWN (H)

YAVENVALE DOWAGER C328 (H)

SIRE: WARWICK COURT MARATHON M163 (H)

WARWICK COURT EVEREST E140 (AI) (H)

WARWICK COURT PLEASANT J109 (H)

WARWICK COURT PLEASANT V159 (H)

MAWARRA UNIQUE C041 (AI) (H)

YARRAM UNIQUE F107 (AI) (H)

YARRAM BLESSING A187 (H)

DAM: WARWICK COURT PLEASANT M138 (AI) (H)

WARWICK COURT ELECTRIC E110 (AI) (H)

WARWICK COURT PLEASANT H101 (H)

WARWICK COURT PLEASANT V159 (H)



BW	200	400	600	MCW	Milk	SS	CWT	EMA	Rib	Rump	RBV%	IMF%
+7.4	+46	+83	+124	+112	+22	+2.6	+83	+5.4	-0.5	-0.8	+1.4	+1.2
72%	66%	66%	67%	60%	51%	75%	58%	48%	55%	59%	51%	55%

INDEX: Southern Self-Replacing +\$185 Northern Self-Replacing +\$156 Southern Baldy Maternal +\$192 Northern Baldy Terminal +\$148

TRAITS OBSERVED: BWT,200WT,400WT(x2),SS,FAT,EMA,IMF,Genomics **GENETIC CONDITION:** IEF,HYF,DLF,

NOTES: FUTURE SIRE. A half share was purchased in Riverview from Franco Herefords after he sold for the top price of \$35500 at the Warwick Court Dispersal sale. At just over 15 months of age we admired his correct structure and exceptional growth for age.

Delungra's
Locally Owned Fuel & Convenience Store



NORTH WEST PETROLEUM

For Quotes & Deliveries
Call Brian on 0267 248 484 or 0428 637 091



FARM FUEL DELIVERIES

MECHANICAL REPAIRS

REGO CHECKS

SERVICING

BATTERIES

TYRES

SHELL OILS

GULF WESTERN OILS

VALVOLINE OILS



Fresh Bread Newspapers Groceries Frozen Goods Farm Produce
BBQ Gas Bait Ice Phone Credit Cold Drinks

259 BYRON ST, INVERELL NSW 2360 - 02 67210610



Kawasaki



Husqvarna



TGB
many differences



VINCE STRANG MOTORCYCLES



HONDA



SUZUKI



Beta
motorcycles

OVER 40 YEARS OF SALES & SERVICE TO NORTHERN NSW & AUSTRALIA





Tissue Sampling Unit (TSU)

Allflex Tissue Sampling Units provide a simple but effective means for DNA testing livestock. Collect a clean, uncontaminated sample in seconds with a single squeeze motion, TSU's are easy to use and yield excellent lab results.

TSU's can be paired with a matching NLIS and visual management tag, creating a simple link between the genetics of an animal and its Identification.

For more information, visit allflex.com.au

Questions?

1300 138 247
allflexcs@msd.com



Glendan Park Knockout K160 (ET)(H)



D.O.B.
25/07/2014

Rego No.
FSAK160

Reference Sire

GLENDAN PARK STORM W134 (H)

BOWMONT STORM B720 (H)

BOWMONT QUEEN Y341 (AI) (TW) (H)

SIRE: WARRINGA GOOGLE G23 (H)

RACOVOLIS TOM THUMB Y555 (H)

WARRINGA FERN D10 (H)

WARRINGA FERN A9 (H)

COOTHARABA ELGIN 2 (H)

COOTHARABA MAGNUM (H)

COOTHARABA PAULINE 279 (H)

DAM: GLENDAN PARK LASS G013 (AI) (H)

RED HILL VALOUR (H)

GLENDAN PARK LASS B107 (H)

MAWARRA LASS 92 (H)

CARA PARK
EST. HEREFORDS 1915

BW	200	400	600	MCW	Milk	SS	CWT	EMA	Rib	Rump	RBV%	IMF%
+8.5	+43	+71	+103	+104	+18	+2.5	+62	+4.8	-0.2	+0.0	+1.8	+0.0
96%	90%	91%	93%	82%	71%	90%	80%	68%	73%	78%	70%	75%

INDEX: Southern Self-Replacing +\$123 Northern Self-Replacing +\$101 Southern Baldy Maternal +\$108 Northern Baldy Terminal +\$74

TRAITS OBSERVED: BWT,200WT(x2),400WT,SS,FAT,EMA,IMF,Genomics **GENETIC CONDITION:** IEF,HYF,DLF,

NOTES: REFERENCE SIRE. Purchased in partnership with Yarram Park at the Wodonga National Hereford Show & Sale in 2016 for \$52,000, after being awarded Junior & Grand Champion. Knockout has developed into an impressive sire exhibiting excellent structure, balance, length & thickness.

Talbalba Advance L131

(H)



D.O.B.
03/10/2015

Rego No.
R5XL131

Reference Sire

INJEMIRA ADVANCE Z080 (AI) (H)

INJEMIRA ADVANCE C085 (H)

INJEMIRA MARINDA Y142 (H)

SIRE: DEVON COURT ADVANCE F052 (H)

GLENDAN PARK STORM W134 (H)

DEVON COURT LIONESS A207 (H)

DEVON COURT LIONESS U376 (H)

COOTHARABA ELGIN 2 (H)

COOTHARABA MAGNUM (H)

COOTHARABA PAULINE 279 (H)

DAM: TALBALBA CHOICE D058 (AI) (H)

TARCOMBE CAPTAIN (H)

TALBALBA CHOICE 77 (AI) (H)

TALBALBA CHOICE 38 (AI) (H)

CARA PARK
EST. 1915

BW	200	400	600	MCW	Milk	SS	CWT	EMA	Rib	Rump	RBV%	IMF%
+9.2	+38	+62	+102	+110	+16	+1.2	+55	+5.6	-0.5	-0.9	+1.9	+1.5
93%	84%	86%	87%	77%	63%	84%	75%	61%	65%	69%	63%	65%

INDEX: Southern Self-Replacing +\$104 Northern Self-Replacing +\$80 Southern Baldy Maternal +\$95 Northern Baldy Terminal +\$76

TRAITS OBSERVED: CE,BWT,200WT,400WT,SS,FAT,EMA,IMF,Genomics **GENETIC CONDITION:** IEF,HYF,DLF,

NOTES: REFERENCE SIRE. Purchased at the Talbalba On Property Bull Sale in 2017 for \$24,000. He is an attractive well balanced sire with a great structure and muscle pattern.



D.O.B.
14/05/2016

Rego No.
EDRM164

Reference Sire

GH NEON 17N (IMP CAN) (H)

MAWARRA UNIQUE C041 (AI) (H)

MAWARRA MINERVA 554 ET1 (AI) (ET) (H)

SIRE: YARRAM UNIQUE F107 (AI) (H)

YARRAM EXTRA 57U M629 ET1 (AI) (ET) (H)

YARRAM BLESSING A187 (H)

YARRAM BLESSING W291 (H)

CL 1 DOMINO 637S 1ET (H)

CL 1 DOMINO 9121W 1ET (IMP USA) (AI) (ET) (H)

CL 1 DOMINETTE 440P 1ET (H)

DAM: EDR GOLDEN J133 (AI) (H)

YAVENVALE EMPIRE (AI) (H)

EDR GOLDEN C702 (AI) (H)

STRELLEY GOLDEN 2 (H)

CARA PARK
EST. HEREFORDS 1975

BW	200	400	600	MCW	Milk	SS	CWT	EMA	Rib	Rump	RBV%	IMF%
+3.3	+30	+46	+62	+31	+28	+1.6	+48	+6.9	+0.5	+0.6	+1.7	+1.1
95%	89%	90%	92%	80%	60%	91%	78%	68%	72%	78%	69%	75%

INDEX: Southern Self-Replacing +\$126 Northern Self-Replacing +\$112 Southern Baldy Maternal +\$136 Northern Baldy Terminal +\$104

TRAITS OBSERVED: BWT,200WT,400WT,600WT(x2),SS,FAT,EMA,IMF,Genomics **GENETIC CONDITION:** HYF,IEF,DLF,

NOTES: REFERENCE SIRE. Purchased in partnership with Yarram Park at the Wodonga National Hereford Show & Sale in 2018 for \$34,000, after being awarded Intermediate Champion. He is a well balanced structurally correct young sire displaying great depth and thickness of body while retaining a good shoulder.

Campbells Butchery

Open:
Monday - Friday
7am - 5.30pm
Saturday
7am - 12pm



Photo: WR Photography

193 Grey St Glen Innes

Proud supporters of the
Battalion & Cara Park
Bull Sale

HOME DELIVERY

Ph: 02 6732 3047

Attenborough

FERTILISER SERVICES

"Your Local Incitec Pivot key dealer team"

SPECIALISING IN:

- **Plant Nutrition**
Bulk, bagged & blended fertilizer
- **Quality Pasture Seeds**
Annual, biennial & perennial systems
- **Soil Analysis Systems**
Accredited nutrient advantage licence
- **Agronomic Advice**

Armidale Road
(PO Box 138) Glen Innes NSW 2370
Ph: 02 6732 2085 ~ Fax: 02 6732 2851
attenboroughferts@gmail.com



After hours:
David Miller: 02 6732 2085 ~ 0428 659 694
Ben Lockwood: 0421 755 113

Talbalba Emperor P043

(AI)(H)



D.O.B.
16/08/2018

Rego No.
R5XP043

Future Sire

CHURCHILL SENSATION 028X (H)

CHURCHILL A1 ET (IMP USA) (H)

CHURCHILL LADY 6109S ET (H)

SIRE: MAWARRA EMPEROR (AI) (ET) (H)

COOTHARABA MAGNUM (H)

MAWARRA MINERVA 816 (AI) (ET) (H)

MAWARRA MINERVA 554 ET1 (AI) (ET) (H)

INJEMIRA ADVANCE C085 (H)

DEVON COURT ADVANCE F052 (H)

DEVON COURT LIONESS A207 (H)

DAM: TALBALBA CHOICE K47 (H)

BOWMONT STORM C115 (AI) (H)

TALBALBA CHOICE F132 (H)

TALBALBA CHOICE 89 (AI) (H)

CARA PARK
EST. HEREFORDS 1916

BW	200	400	600	MCW	Milk	SS	CWT	EMA	Rib	Rump	RBV%	IMF%
+3.2	+34	+62	+87	+75	+19	+1.0	+62	+4.7	+0.1	+0.1	+1.3	+1.8
87%	77%	74%	75%	69%	59%	77%	65%	56%	61%	64%	55%	63%

INDEX: Southern Self-Replacing +\$143 Northern Self-Replacing +\$129 Southern Baldy Maternal +\$151 Northern Baldy Terminal +\$123

TRAITS OBSERVED: GL,CE,BWT,200WT,400WT,SS,FAT,EMA,IMF,DOC,Genomics **GENETIC CONDITION:** HYF,IEF,DLF,

NOTES: FUTURE SIRE. Purchased in partnership with Yarram Park Performance Genetics at the Talbalba Herefords 2020 bull sale for the top price of \$100,000. Emperor represents the extremely rare combination of exceptional phenotype, performance and carcase data. Very low Birth Weight (39kg), high growth and a great carcase including Intramuscular Fat in the top 2% of the breed. We have used Emperor extensively in his first two joining seasons. He has bred to our high expectations, producing 18 weaner bull prospects for the 2023 bull sale.



EST. 1958

Regular Cattle Sales • Regular Prime Lamb & Sheep Sales
Stud Stock Sales • Selling to Feedlots
Consignment of Stock • Auctions Plus
Rural Property Sales • Market Appraisals

PERSONALISED SERVICE
"Leading by Results"

Licensed Auctioneers - Stock, Station & Real Estate Agents
118 Wentworth St (PO Box 189), Glen Innes, NSW 2370
www.colinsayco.com.au
office@colinsayco.com.au



rma network. Accredited Member

Steve Daley
0400 406 667

Shad Bailey
0458 322 283

Nathan Purvis
0427 324 078

Craig Thomas
0428 669 500

1

Thornleigh Black Hawk Q183

(H)**D.O.B.**
26/11/2019**Rego No.**
TCCQ183**Account.**
GE & KM Kneipp

KAROONDA LINGO (AI) (H)
 SOUTH BOOROOK BOMBAY (H)
 S BOOROOK BRIDESMAID D34 (AI) (H)

SIRE: BATTALION BLACK HAWK K7 (H)

MAWARRA VIRGINIAN (H)
 BATTALION CHERRY RIPE 6 (AI) (H)
 MOORLANDS CHERRY RIPE W155 (H)
 MAWARRA TRAIL BLAZER (AI) (H)
 THORNLEIGH TRAIL BLAZER E341 (AI) (H)
 THORNLEIGH JULIET Z303 (H)

**DAM: THORNLEIGH 341 SNOWFLAKE H167 (H)**

LCI 157K RIBSTONE 83S (IMP CAN) (H)
 THORNLEIGH 83S SNOWFLAKE D195 (AI) (H)
 THORNLEIGH Q141 SNOWFLAKE U154 (H)

BW	200	400	600	MCW	Milk	SS	CWT	EMA	Rib	Rump	RBV%	IMF%
+5.4	+34	+61	+91	+84	+19	+1.9	+61	+3.9	+0.0	+0.4	+1.5	-0.3
66%	67%	67%	68%	60%	51%	65%	59%	49%	54%	58%	51%	55%

INDEX: Southern Self-Replacing +\$145 Northern Self-Replacing +\$127 Southern Baldy Maternal +\$154 Northern Baldy Terminal +\$116**TRAITS OBSERVED:** Genomics

NOTES: Purchased at the Thornleigh dispersal sale as a yearling with the intentions of using him lightly before letting him reach his potential and offering him at our sale. True to type he carries the trademark great butt shape and structural correctness of his sire with tremendous depth of body plus great skin and hair type.

PURCHASER..... **PRICE \$**..... 33

2**Battalion Montana Q079****(AI)(ET)(H)****D.O.B.**
03/11/2019**Rego No.**
BHEQ079**Account.**
GE & KM Kneipp

GH NEON 17N (IMP CAN) (H)

MAWARRA UNIQUE C041 (AI) (H)

MAWARRA MINERVA 554 ET1 (AI) (ET) (H)

SIRE: CARA PARK MONARCH M647 (H)

BOWMONT STORM C093 (H)

CARA PARK WONDER L H220 (AI) (H)

CARA PARK WONDER LASS C714 (AI) (H)

COOTHARABA MAGNUM (H)

MAWARRA VIRGINIAN (H)

MAWARRA CHERRY RIPE 263 (H)

DAM: BATTALION CHERRY RIPE 6 (AI) (H)

ONSLow SHARKA T019 (H)

MOORLANDS CHERRY RIPE W155 (H)

MOORLANDS CHERRY RIPE Q028 (H)



BW	200	400	600	MCW	Milk	SS	CWT	EMA	Rib	Rump	RBV%	IMF%
+5.6	+41	+78	+115	+104	+19	+1.1	+82	+5.7	-0.5	-0.2	+2.1	+0.5
71%	67%	68%	69%	63%	55%	72%	61%	52%	57%	61%	53%	57%

INDEX: Southern Self-Replacing +\$173 Northern Self-Replacing +\$150 Southern Baldy Maternal +\$175 Northern Baldy Terminal +\$133**TRAITS OBSERVED:** BWT,400WT,600WT,SS,FAT,EMA,IMF,Genomics

NOTES: We used this highly rated young sire over our stud cows and heifers last year and are only offering him for sale due to having plenty of his genetics in our herd. Montana is very similar in type to his well known half brother "Blackhawk" and comes with a little extra data. His first calves are on the ground and look very impressive. A proven young sire that has a stacked pedigree of elite performers. Three full ET brothers to Montana sold at last years sale to average \$20,000 including the top price B.Memphis Q080 for \$24,000 to Karoonda Herefords

34 **PURCHASER**..... **PRICE \$**.....

3**Battalion Maximus R084****(H)****D.O.B.**
10/05/2020**Rego No.**
BHER084**Account.**
GE & KM Kneipp

GH NEON 17N (IMP CAN) (H)

MAWARRA UNIQUE C041 (AI) (H)

MAWARRA MINERVA 554 ET1 (AI) (ET) (H)

SIRE: CARA PARK MONARCH M647 (H)

BOWMONT STORM C093 (H)

CARA PARK WONDER L H220 (AI) (H)

CARA PARK WONDER LASS C714 (AI) (H)

HAVEN WIZARD (DH) (IMP GBR) (H)

BOWMONT WIZARD C076 (AI) (H)

BOWMONT L MINERVA X208 (AI) (H)

DAM: BOWMONT QUEEN F024 (AI) (H)

GLENDAN PARK STORM W134 (H)

BOWMONT QUEEN C117 (H)

BOWMONT QUEEN X253 (H)



DAM

BW	200	400	600	MCW	Milk	SS	CWT	EMA	Rib	Rump	RBV%	IMF%
+6.1	+36	+67	+93	+81	+15	+2.5	+60	+5.1	-0.1	+0.2	+0.8	+1.0
68%	66%	67%	69%	62%	57%	72%	59%	48%	55%	59%	51%	55%

INDEX: Southern Self-Replacing +\$124 Northern Self-Replacing +\$102 Southern Baldy Maternal +\$109 Northern Baldy Terminal +\$82**TRAITS OBSERVED:** BWT,600WT,SS,FAT,EMA,IMF

NOTES: Maximus has been a standout since birth, he is a larger volume bull that moves well due to his very correct structure. We really admire his width through the hips and pins and depth of body. Dam has produced B. Bigmac P057 for \$9000 to Collingwood Hereford Stud, B.Blackjack P058 for \$15,000 and B.Blackhawk Q075 for \$10,000 to John & Maree Smith

PURCHASER..... **PRICE \$**..... 35

4

Battalion Theodore R085

(H)

D.O.B.
11/05/2020

Rego No.
BHER085

Account.
GE & KM Kneipp

PUTE DUSKY D16 (H)
LOCHARBURN GERRY 11004 (IMP NZL) (H)
LOCHARBURN BRYONIA 02124 (H)

SIRE: KAROONDA TAUPO (AI) (H)

WALLAN CREEK HAYMAKER D225 (H)
KAROONDA MARITANA H201 (H)
KAROONDA MARITANA A093 (H)
GLENDAN PARK EMERALD E072 (AI) (ET) (H)
SOUTH BOOROOK OTHELLO H358 (H)
S BOOROOK ORANGE C117 (H)

DAM: BATTALION FIRST DAY L49 (H)

KALUDAH TURPS (AI) (H)
STRATHLEIGH FIRST DAY E353 (H)
STRATHLEIGH FIRST DAY B888 (H)



BW	200	400	600	MCW	Milk	SS	CWT	EMA	Rib	Rump	RBV%	IMF%
+7.6	+37	+59	+88	+95	+17	+2.1	+47	+3.7	-1.5	-2.2	+1.8	+0.3
65%	64%	64%	67%	57%	48%	71%	55%	44%	50%	54%	46%	50%

INDEX: Southern Self-Replacing +\$67 Northern Self-Replacing +\$39 Southern Baldy Maternal +\$53 Northern Baldy Terminal +\$41

TRAITS OBSERVED: 600WT,SS,FAT,EMA,IMF,Genomics

NOTES: A large framed Karoonda Taupo son that continues to get better and better. He has terrific length and width with a good soft loose skin. One of our top bulls this year

36 **PURCHASER**..... **PRICE \$**.....

5**Battalion Unit R091****(AI)(H)****D.O.B.**
22/04/2020**Rego No.**
BHER091**Account.**
GE & KM Kneipp

MAWARRA UNIQUE C041 (AI) (H)

CARA PARK UNIQUE J324 (AI) (H)

CARA PARK TREASURE F037 (AI) (H)

SIRE: BATTALION UNDERTAKER M023 (ET) (H)

ECHO PARK WARATAH (AI) (H)

BATTALION CONSTANCE 42 (H)

COURALLIE CONSTANCE V086 (H)

GLENDAN PARK STORM W134 (H)

BOWMONT STORM C093 (H)

BOWMONT MARITANA W168 (AI) (H)

DAM: BATTALION CHERRY RIPE 4 (AI) (H)

ONSLow SHARKA T019 (H)

MOORLANDS CHERRY RIPE W155 (H)

MOORLANDS CHERRY RIPE Q028 (H)



BW	200	400	600	MCW	Milk	SS	CWT	EMA	Rib	Rump	RBV%	IMF%
+7.5	+39	+73	+110	+111	+12	+2.3	+67	+5.1	-0.8	-0.6	+1.8	+0.4
67%	66%	66%	69%	61%	54%	72%	60%	49%	55%	59%	52%	56%

INDEX: Southern Self-Replacing +\$140 Northern Self-Replacing +\$117 Southern Baldy Maternal +\$131 Northern Baldy Terminal +\$101**TRAITS OBSERVED:** 600WT,SS,FAT,EMA,IMF,Genomics

NOTES: Our first bull by Battalion Undertaker who sold to Newcommen Herefords for \$20,000. If you are looking to increase your weaning weights this is the bull. Unit has a lot of natural thickness plus has exceptional constitution very much like his dam who is always one of the heavier cows in the mob. Dam has produced B.Vulcan L3 for \$7500 to Vanessa Lambert, B.Junction M017 for \$12,000 to Hylands Herefords.

PURCHASER..... **PRICE \$**..... 37

6

Battalion Mission R089

(H)**D.O.B.**
22/07/2020**Rego No.**
BHER089**Account.**
GE & KM Kneipp

GH NEON 17N (IMP CAN) (H)

MAWARRA UNIQUE C041 (AI) (H)

MAWARRA MINERVA 554 ET1 (AI) (ET) (H)

SIRE: CARA PARK MONARCH M647 (H)

BOWMONT STORM C093 (H)

CARA PARK WONDER L H220 (AI) (H)

CARA PARK WONDER LASS C714 (AI) (H)

COOTHARABA MAGNUM (H)

MAWARRA VIRGINIAN (H)

MAWARRA CHERRY RIPE 263 (H)

DAM: BATTALION CONSTANCE K37 (AI) (ET) (H)

PARRAWEENA OCTAGONAL ET (ET) (H)

COURALLIE CONSTANCE V086 (H)

COURALLIE CONSTANCE P456 (H)



BW	200	400	600	MCW	Milk	SS	CWT	EMA	Rib	Rump	RBV%	IMF%
+6.0	+39	+68	+93	+69	+20	+1.7	+69	+6.4	-0.2	+0.2	+2.2	+0.9
68%	67%	67%	69%	62%	56%	73%	60%	51%	56%	60%	53%	57%

INDEX: Southern Self-Replacing +\$156 Northern Self-Replacing +\$139 Southern Baldy Maternal +\$152 Northern Baldy Terminal +\$111**TRAITS OBSERVED:** 600WT,SS,FAT,EMA,IMF,Genomics

NOTES: Misson is one of the classier bulls in the Battalion team. He is thick and broad topped with a great Queensland style skin. A very mobile free moving bull that continues to improve. His dam is a big milker and bred B.Monarch Q072 who sold for \$8000 to Dean Walsh

38 **PURCHASER**..... **PRICE \$**.....



D.O.B.
17/05/2020

Rego No.
BHER087

Account.
GE & KM Kneipp

GH NEON 17N (IMP CAN) (H)

MAWARRA UNIQUE C041 (AI) (H)

MAWARRA MINERVA 554 ET1 (AI) (ET) (H)

SIRE: CARA PARK MONARCH M647 (H)

BOWMONT STORM C093 (H)

CARA PARK WONDER L H220 (AI) (H)

CARA PARK WONDER LASS C714 (AI) (H)

SMITHSTON WEE DRAM ET1 (AI) (ET) (H)

ECHO PARK WARATAH (AI) (H)

ECHO PARK BETTY 23 (AI) (H)

DAM: BATTALION SILKY 2 (H)

EURANGATUCK ALDERSHOT (H)

SMITHSTON SILKY Z231 (H)

SMITHSTON SILKY X053 ET (ET) (H)



BW	200	400	600	MCW	Milk	SS	CWT	EMA	Rib	Rump	RBY%	IMF%
+6.3	+34	+62	+88	+86	+15	+2.0	+55	+5.8	-0.7	-0.5	+1.8	+0.6
68%	65%	65%	68%	59%	52%	71%	58%	46%	52%	56%	48%	52%

INDEX: Southern Self-Replacing +\$120 Northern Self-Replacing +\$103 Southern Baldy Maternal +\$114 Northern Baldy Terminal +\$90

TRAITS OBSERVED: 600WT,SS,FAT,EMA,IMF,Genomics

NOTES: Monsoon carries the usual thick top and extra muscle that Monarch is consistently breeding for us. His mother is a deep bodied female that always weans one of the heavier calves in the group.

8**Cara Park Advance R0007****(H)****D.O.B.**
02/08/2020**Rego No.**
JENR0007**Account.**
JE Newnham & Co

INJEMIRA ADVANCE C085 (H)
 DEVON COURT ADVANCE F052 (H)
 DEVON COURT LIONESS A207 (H)

SIRE: TALBALBA ADVANCE L131 (H)

COOTHARABA MAGNUM (H)
 TALBALBA CHOICE D058 (AI) (H)
 TALBALBA CHOICE 77 (AI) (H)
 GH NEON 17N (IMP CAN) (H)

MAWARRA UNIQUE C041 (AI) (H)
 MAWARRA MINERVA 554 ET1 (AI) (ET) (H)

DAM: CARA PARK PEARL L508 (AI) (H)

BOWMONT STORM C093 (H)
 CARA PARK PEARL H227 (AI) (H)
 CARA PARK PEARL C707 (AI) (H)

CARA PARK
 EST. HEREFORDS 1915

BW	200	400	600	MCW	Milk	SS	CWT	EMA	Rib	Rump	RBY%	IMF%
+7.7	+38	+63	+102	+96	+15	+2.2	+63	+6.2	+0.2	+0.6	+1.6	+1.2
72%	65%	67%	70%	60%	46%	72%	57%	47%	50%	54%	49%	48%

INDEX: Southern Self-Replacing +\$130 Northern Self-Replacing +\$109 Southern Baldy Maternal +\$112 Northern Baldy Terminal +\$82**TRAITS OBSERVED:** BWT,400WT(x2),600WT(x2),SS,FAT,EMA,IMF

NOTES: An attractive well-rounded bull with both very good growth and carcass, backed up by his Breedplan data. Top 7% for 600 Day Weight and Eye Muscle Area and top 15% Retail Beef Yield and Intramuscular Fat.

40 **PURCHASER**..... **PRICE \$**.....

9**Cara Park Advance R0009****(H)****D.O.B.**
06/08/2020**Rego No.**
JENR0009**Account.**
JE Newnham & Co

INJEMIRA ADVANCE C085 (H)
 DEVON COURT ADVANCE F052 (H)
 DEVON COURT LIONESS A207 (H)

SIRE: TALBALBA ADVANCE L131 (H)

COOTHARABA MAGNUM (H)
 TALBALBA CHOICE D058 (AI) (H)
 TALBALBA CHOICE 77 (AI) (H)
 RED HILL BLUE BOY (H)
 BATTALION BUCKSHOT (AI) (ET) (H)
 COURALLIE CONSTANCE V086 (H)

DAM: CARA PARK HARMONY K488 (TW) (H)

YARRAM POMPEII V055 (AI) (H)
 CARA PARK HARMONY A544 (AI) (H)
 CARA PARK HARMONY T273 (H)

CARA PARK
 EST. HEREFORDS 1915

BW	200	400	600	MCW	Milk	SS	CWT	EMA	Rib	Rump	RBY%	IMF%
+6.8	+34	+55	+84	+89	+12	+1.6	+48	+3.9	-0.4	-0.5	+1.3	+0.8
73%	65%	67%	70%	60%	45%	71%	57%	46%	49%	53%	47%	46%

INDEX: Southern Self-Replacing +\$103 Northern Self-Replacing +\$86 Southern Baldy Maternal +\$101 Northern Baldy Terminal +\$79**TRAITS OBSERVED:** BWT,400WT(x2),600WT(x2),SS,FAT,EMA,IMF

NOTES: Stylish well-balanced bull, with a great carcass. Great outlook, wide and long with an impressive hindquarter and ideal skin. Good Breedplan data throughout.

PURCHASER..... **PRICE \$**..... 41

10**Cara Park Advance R0024****(H)****D.O.B.**
25/08/2020**Rego No.**
JENR0024**Account.**
JE Newnham & Co

INJEMIRA ADVANCE C085 (H)
 DEVON COURT ADVANCE F052 (H)
 DEVON COURT LIONESS A207 (H)

SIRE: TALBALBA ADVANCE L131 (H)

COOTHARABA MAGNUM (H)
 TALBALBA CHOICE D058 (AI) (H)
 TALBALBA CHOICE 77 (AI) (H)
 GH NEON 17N (IMP CAN) (H)

MAWARRA UNIQUE C041 (AI) (H)
 MAWARRA MINERVA 554 ET1 (AI) (ET) (H)

DAM: CARA PARK HARMONY H277 (H)

YARRAM POMPEII V055 (AI) (H)
 CARA PARK HARMONY A544 (AI) (H)
 CARA PARK HARMONY T273 (H)

CARA PARK
 EST. HEREFORDS 1915

BW	200	400	600	MCW	Milk	SS	CWT	EMA	Rib	Rump	RBY%	IMF%
+7.3	+42	+73	+114	+118	+16	+1.4	+72	+5.1	-1.5	-2.1	+2.6	+0.6
73%	66%	67%	70%	60%	47%	71%	57%	47%	50%	54%	48%	47%

INDEX: Southern Self-Replacing +\$146 Northern Self-Replacing +\$122 Southern Baldy Maternal +\$145 Northern Baldy Terminal +\$114**TRAITS OBSERVED:** BWT,400WT(x2),600WT(x2),SS,FAT,EMA,IMF

NOTES: Big volume bull, heaviest in our draft to date. In the top 2% for 600 Day Weight on Breedplan. Top 15% Eye Muscle Area and the top 1% Retail Beef Yield.

42 **PURCHASER**..... **PRICE \$**.....



D.O.B.
23/08/2020

Rego No.
JENR0023

Account.
JE Newnham & Co

BOWMONT STORM B720 (H)

WARRINGA GOOGLE G23 (H)

WARRINGA FERN D10 (H)

SIRE: GLENDAN PARK KNOCKOUT K160 (ET) (H)

COOTHARABA MAGNUM (H)

GLENDAN PARK LASS G013 (AI) (H)

GLENDAN PARK LASS B107 (H)

GLENDAN PARK STORM W134 (H)

BOWMONT STORM C093 (H)

BOWMONT MARITANA W168 (AI) (H)

DAM: CARA PARK CURLEY J316 (AI) (H)

YAVENVALE FREEDOM (H)

CARA PARK CURLEY D884 (H)

CARA PARK CURLEY Z452 (AI) (H)

CARA PARK
EST. HEREFORDS 1915

BW	200	400	600	MCW	Milk	SS	CWT	EMA	Rib	Rump	RBY%	IMF%
+9.6	+47	+80	+118	+114	+14	+1.7	+70	+5.7	-0.9	-1.0	+2.4	+0.2
74%	68%	69%	72%	63%	51%	74%	60%	51%	54%	58%	52%	52%

INDEX: Southern Self-Replacing +\$119 Northern Self-Replacing +\$92 Southern Baldy Maternal +\$90 Northern Baldy Terminal +\$61

TRAITS OBSERVED: BWT,400WT(x2),600WT(x2),SS,FAT,EMA,IMF

NOTES: Powerfully built bull with muscle throughout. Top 1% for 600 Day Weight and Retail Beef Yield and top 10% Eye Muscle Area.

12**Cara Park Knockout R0039****(H)****D.O.B.**
28/09/2020**Rego No.**
JENR0039**Account.**
JE Newnham & Co

BOWMONT STORM B720 (H)

WARRINGA GOOGLE G23 (H)

WARRINGA FERN D10 (H)

SIRE: GLENDAN PARK KNOCKOUT K160 (ET) (H)

COOTHARABA MAGNUM (H)

GLENDAN PARK LASS G013 (AI) (H)

GLENDAN PARK LASS B107 (H)

BANEMORE POMPEII T036 (AI) (H)

YAVENVALE FREEDOM (H)

YAVENVALE MELLOW U314 (H)

DAM: CARA PARK PEARL J344 (H)

INJEMIRA ADVANCE V093 (H)

CARA PARK PEARL B615 (AI) (H)

CARA PARK PEARL Y326 (AI) (H)

CARA PARK
EST. HEREFORDS 1915

BW	200	400	600	MCW	Milk	SS	CWT	EMA	Rib	Rump	RBV%	IMF%
+9.2	+44	+69	+100	+96	+15	+1.5	+56	+3.9	-0.3	-0.4	+1.6	+0.1
72%	63%	61%	62%	55%	50%	58%	53%	44%	48%	52%	46%	49%

INDEX: Southern Self-Replacing +\$94 Northern Self-Replacing +\$70 Southern Baldy Maternal +\$70 Northern Baldy Terminal +\$47**TRAITS OBSERVED:** BWT,200WT,400WT(x2),600WT,SS,FAT,EMA,IMF**NOTES:** Great outlook with thickness and depth throughout. Top 8% for 600 Day Weight and top 15% Retail Beef Yield.44 **PURCHASER**..... **PRICE \$**.....

13

Cara Park Mojo R0010

(H)**D.O.B.**
07/08/2020**Rego No.**
JENR0010**Account.**
JE Newnham & Co

MAWARRA UNIQUE C041 (AI) (H)

YARRAM UNIQUE F107 (AI) (H)

YARRAM BLESSING A187 (H)

SIRE: EDR MOJO (H)

CL 1 DOMINO 9121W 1ET (IMP USA) (AI) (ET) (H)

EDR GOLDEN J133 (AI) (H)

EDR GOLDEN C702 (AI) (H)

WARRINGA GOOGLE G23 (H)

GLENDAN PARK KNOCKOUT K160 (ET) (H)

GLENDAN PARK LASS G013 (AI) (H)

DAM: CARA PARK MARSHALL LASS N739 (H)

MAWARRA UNIQUE C041 (AI) (H)

CARA PARK MARSHALL LASS G180 (H)

CARA PARK MARSHALL LASS C749 (AI) (H)

CARA PARK
EST. HEREFORDS 1915

BW	200	400	600	MCW	Milk	SS	CWT	EMA	Rib	Rump	RBY%	IMF%
+7.9	+43	+69	+102	+88	+23	+2.9	+62	+5.6	-0.7	-0.9	+2.3	+0.4
73%	66%	68%	71%	61%	43%	73%	58%	49%	52%	57%	50%	51%

INDEX: Southern Self-Replacing +\$136 Northern Self-Replacing +\$110 Southern Baldy Maternal +\$120 Northern Baldy Terminal +\$85**TRAITS OBSERVED:** BWT,400WT(x2),600WT(x2),SS,FAT,EMA,IMF

NOTES: Big, well-balanced bull. He has tremendous length and depth of body while retaining plenty of thickness. On Breedplan he is in the top 7% for 600 Day Weight. Top 15% Milk, top 20% Scrotal, top 10% Eye Muscle Area, and top 15% Retail Beef Yield.

PURCHASER..... **PRICE \$**..... 45

14 Cara Park Mojo R0020

(H)



D.O.B.
16/08/2020

Rego No.
JENR0020

Account.
JE Newnham & Co

MAWARRA UNIQUE C041 (AI) (H)

YARRAM UNIQUE F107 (AI) (H)

YARRAM BLESSING A187 (H)

SIRE: EDR MOJO (H)

CL 1 DOMINO 9121W 1ET (IMP USA) (AI) (ET) (H)

EDR GOLDEN J133 (AI) (H)

EDR GOLDEN C702 (AI) (H)

GLENDAN PARK STORM W134 (H)

BOWMONT STORM C093 (H)

BOWMONT MARITANA W168 (AI) (H)

DAM: CARA PARK ALETHEA J301 (AI) (H)

INJEMIRA ADVANCE V093 (H)

CARA PARK ALETHEA E918 (AI) (H)

CARA PARK ALETHEA B619 (AI) (H)

CARA PARK
EST. HEREFORDS 1915

BW	200	400	600	MCW	Milk	SS	CWT	EMA	Rib	Rump	RBY%	IMF%
+6.5	+39	+66	+97	+76	+22	+1.7	+63	+6.2	+0.4	+0.9	+1.4	+0.8
73%	67%	68%	71%	62%	47%	74%	59%	51%	54%	58%	52%	52%

INDEX: Southern Self-Replacing +\$135 Northern Self-Replacing +\$113 Southern Baldy Maternal +\$128 Northern Baldy Terminal +\$95

TRAITS OBSERVED: BWT,400WT(x2),600WT(x2),SS,FAT,EMA,IMF

NOTES: Plenty of length and muscle in this bull. Balanced Breedplan data in the top 15% for 600 Day Weight, top 15% Milk, top 5% Eye Muscle Area, and top 20% Retail Beef Yield.

46 **PURCHASER**..... **PRICE \$**.....

15**Cara Park Knockout R0035****(H)****D.O.B.**
19/09/2020**Rego No.**
JENR0035**Account.**
JE Newnham & Co

BOWMONT STORM B720 (H)

WARRINGA GOOGLE G23 (H)

WARRINGA FERN D10 (H)

SIRE: GLENDAN PARK KNOCKOUT K160 (ET) (H)

COOTHARABA MAGNUM (H)

GLENDAN PARK LASS G013 (AI) (H)

GLENDAN PARK LASS B107 (H)

GH NEON 17N (IMP CAN) (H)

MAWARRA UNIQUE C041 (AI) (H)

MAWARRA MINERVA 554 ET1 (AI) (ET) (H)

DAM: CARA PARK CURLEY K468 (H)

CARA PARK PLAYBOY K672 ET1 (ET) (H)

CARA PARK CURLEY C709 (AI) (H)

CARA PARK CURLEY Z445 (H)

CARA PARK
EST. HEREFORDS 1915

BW	200	400	600	MCW	Milk	SS	CWT	EMA	Rib	Rump	RBY%	IMF%
+6.7	+40	+68	+96	+96	+17	+0.9	+62	+4.3	-0.8	-0.9	+1.8	+0.0
73%	67%	69%	71%	62%	50%	73%	59%	50%	53%	57%	51%	51%

INDEX: Southern Self-Replacing +\$117 Northern Self-Replacing +\$95 Southern Baldy Maternal +\$110 Northern Baldy Terminal +\$81**TRAITS OBSERVED:** BWT,400WT(x2),600WT(x2),SS,FAT,EMA,IMF**NOTES:** Quality bull with length and width of body. Out of a very good Unique daughter. Top 15% for 600 Day Weight and top 10% Retail Beef Yield.**PURCHASER**..... **PRICE \$**..... 47

16**Cara Park Advance R0026****(H)****D.O.B.**
29/08/2020**Rego No.**
JENR0026**Account.**
JE Newnham & Co

INJEMIRA ADVANCE C085 (H)
 DEVON COURT ADVANCE F052 (H)
 DEVON COURT LIONESS A207 (H)

SIRE: TALBALBA ADVANCE L131 (H)

COOTHARABA MAGNUM (H)
 TALBALBA CHOICE D058 (AI) (H)
 TALBALBA CHOICE 77 (AI) (H)
 RED HILL BLUE BOY (H)
 BATTALION BUCKSHOT (AI) (ET) (H)
 COURALLIE CONSTANCE V086 (H)

DAM: CARA PARK ALETHEA M632 (H)

INJEMIRA ADVANCE V093 (H)
 CARA PARK ALETHEA C719 (AI) (H)
 CARA PARK ALETHEA Y374 (H)

CARA PARK
 EST. HEREFORDS 1915

BW	200	400	600	MCW	Milk	SS	CWT	EMA	Rib	Rump	RBY%	IMF%
+7.0	+34	+56	+88	+96	+14	+2.1	+49	+3.8	-1.1	-1.6	+1.6	+0.6
73%	65%	68%	70%	60%	45%	71%	57%	46%	49%	53%	47%	46%

INDEX: Southern Self-Replacing +\$105 Northern Self-Replacing +\$84 Southern Baldy Maternal +\$108 Northern Baldy Terminal +\$87**TRAITS OBSERVED:** BWT,400WT(x2),600WT(x2),SS,FAT,EMA,IMF

NOTES: A moderately framed bull with exceptional thickness of body, good spring of rib and great skin. Top 15% Retail Beef Yield.

48 **PURCHASER**..... **PRICE \$**.....



D.O.B.
02/09/2020

Rego No.
JENR0027

Account.
JE Newnham & Co

MAWARRA UNIQUE C041 (AI) (H)

YARRAM UNIQUE F107 (AI) (H)

YARRAM BLESSING A187 (H)

SIRE: EDR MOJO (H)

CL 1 DOMINO 9121W 1ET (IMP USA) (AI) (ET) (H)

EDR GOLDEN J133 (AI) (H)

EDR GOLDEN C702 (AI) (H)

GLENDAN PARK STORM W134 (H)

BOWMONT STORM C093 (H)

BOWMONT MARITANA W168 (AI) (H)

DAM: CARA PARK CURLEY G108 (AI) (H)

INJEMIRA ADVANCE V093 (H)

CARA PARK CURLEY C706 (AI) (H)

CARA PARK CURLEY Z427 (AI) (H)

CARA PARK
EST. HEREFORDS 1915

BW	200	400	600	MCW	Milk	SS	CWT	EMA	Rib	Rump	RBV%	IMF%
+5.8	+36	+56	+83	+63	+24	+1.9	+52	+4.9	+0.9	+1.5	+0.5	+1.2
74%	67%	69%	72%	62%	48%	74%	59%	51%	55%	59%	53%	53%

INDEX: Southern Self-Replacing +\$112 Northern Self-Replacing +\$90 Southern Baldy Maternal +\$107 Northern Baldy Terminal +\$82

TRAITS OBSERVED: BWT,400WT(x2),600WT(x2),SS,FAT,EMA,IMF

NOTES: A well-shaped, moderately framed bull with good carcass data. Top 20% Eye Muscle Area, top 15% Intramuscular Fat, and top 5% Milk. Out of a very good old Storm C093 cow.

PURCHASER..... **PRICE \$**..... 49

**FOR ALL OF YOUR FARMING, GRAZING AND NURSERY
NEEDS...**

**WILL NEWBERRY 0427 322 287 - JEFF DUDDY 0409 811 950
118 WENTWORTH ST**



SAY & CO RURAL

GLEN INNES, NSW - (02) 6732 2287



regional & agribusiness

more
than
money



Proud to support
**THE BEEF INDUSTRY IN
THE NEW ENGLAND**

Our commitment to The New England extends well beyond banking.
That's why we're proud to support Battalion & Cara Park Bull Sale.

To find out more about how NAB is supporting your community contact:

Daren Wilkinson
Managing Partner
0436910867

Kate Black
Regional & Agri Manager
0407254449

18**Thornleigh Black Hawk R225 (AI)(H)****D.O.B.**
08/07/2020**Rego No.**
TCCR225**Account.**
GE & KM Kneipp

KAROONDA LINGO (AI) (H)
 SOUTH BOOROOK BOMBAY (H)
 S BOOROOK BRIDESMAID D34 (AI) (H)

SIRE: BATTALION BLACK HAWK K7 (H)

MAWARRA VIRGINIAN (H)
 BATTALION CHERRY RIPE 6 (AI) (H)
 MOORLANDS CHERRY RIPE W155 (H)
 MAWARRA TRAIL BLAZER (AI) (H)
 THORNLEIGH TRAIL BLAZER E341 (AI) (H)
 THORNLEIGH JULIET Z303 (H)

DAM: THORNLEIGH 341 SNOWFLAKE J337 (H)

LCI 157K RIBSTONE 83S (IMP CAN) (H)
 THORNLEIGH 83S SNOWFLAKE D195 (AI) (H)
 THORNLEIGH Q141 SNOWFLAKE U154 (H)



BW	200	400	600	MCW	Milk	SS	CWT	EMA	Rib	Rump	RBY%	IMF%
+4.8	+31	+54	+74	+71	+15	+1.8	+47	+2.9	+0.5	+1.1	+1.0	-0.3
66%	66%	67%	68%	60%	51%	65%	59%	49%	54%	58%	51%	55%

INDEX: Southern Self-Replacing +\$117 Northern Self-Replacing +\$105 Southern Baldy Maternal +\$123 Northern Baldy Terminal +\$94**TRAITS OBSERVED:** GL,600WT,SS,FAT,EMA,IMF,Genomics

NOTES: Thornleigh Blackhawk R225 was purchased on his mother at the Thornleigh dispersal. He is the typical thick well structured style we expect from his sire. His dam was purchased for having extra milk and having one of the more forward presented calves at the sale.

PURCHASER..... **PRICE \$**..... 51

19**Dundee Bonanza R098****(H)****D.O.B.**
13/10/2020**Rego No.**
RK2R098**Account.**
GE & KM Kneipp

KAROONDA LINGO (AI) (H)
 SOUTH BOOROOK BOMBAY (H)
 S BOOROOK BRIDESMAID D34 (AI) (H)

SIRE: DUNDEE BONANZA M025 (H)

BATTALION COLUMBO (H)
 DUNDEE SUNDAE 48 (H)
 DUNDEE SUNDAE 39 (H)
 GLENDAN PARK EMERALD E072 (AI) (ET) (H)
 SOUTH BOOROOK OTHELLO H358 (H)
 S BOOROOK ORANGE C117 (H)

DAM: DUNDEE PR ROYAL 5 (H)

SMITHSTON WHISKEY GALORE W195 (AI) (H)
 SMITHSTON PR ROYAL A175 (H)
 SMITHSTON PR ROYAL X022 (H)



BW	200	400	600	MCW	Milk	SS	CWT	EMA	Rib	Rump	RBY%	IMF%
+8.2	+42	+67	+100	+104	+16	+0.9	+57	+3.4	-1.6	-2.0	+2.4	-0.8
66%	63%	64%	68%	58%	47%	71%	55%	44%	51%	55%	47%	50%

INDEX: Southern Self-Replacing +\$112 Northern Self-Replacing +\$88 Southern Baldy Maternal +\$113 Northern Baldy Terminal +\$87**TRAITS OBSERVED:** 600WT,SS,FAT,EMA,IMF,Genomics**NOTES:** We admire the muscle pattern of this bull (purchased as a calf from Dundee Echo Park)52 **PURCHASER**..... **PRICE \$**.....

20

Battalion Unregistered Bull 610 (H)



D.O.B.

Rego No.
unreg

Account.
GE & KM Kneipp

YARRAM UNIQUE F181

SIRE: COURALLIE KODIAK K592

COURALLIE Z3 PRUDENCE F214

BATTALION UNREGISTERED BULL 610

DUNDEE BARITONE RK2G2

DAM: DUNDEE HERD COW 610

DAM: DUNDEE HERD COW 621



NOTES: A larger framed Courallie Kodiak son (purchased as a calf from Dundee Echo Park)

21**Battalion Kodiak R080****(H)****D.O.B.**
10/07/2020**Rego No.**
BHER080**Account.**
GE & KM Kneipp

MAWARRA UNIQUE C041 (AI) (H)

YARRAM UNIQUE F181 (H)

YARRAM FLOSSIE A096 (H)

SIRE: COURALLIE KODIAK K592 (AI) (H)

KIWI ZABEST Z3 (IMP NZL) (H)

COURALLIE Z3 PRUDENCE F214 (AI) (H)

COURALLIE A230 PRUDENCE C095 (H)

YAVENVALE COLOSSAL (H)

BATTALION COLUMBO (H)

COURALLIE CONSTANCE V086 (H)

DAM: DUNDEE LADY MINERVA 17 (H)

ECHO PARK VAGABOND (H)

ECHO PARK LADY MINERVA 9 (H)

ECHO PARK L MINERVA (H)



BW	200	400	600	MCW	Milk	SS	CWT	EMA	Rib	Rump	RBY%	IMF%
+4.9	+31	+52	+77	+94	+13	+1.7	+46	+1.6	-1.2	-1.3	+0.5	+0.1
65%	63%	64%	67%	57%	49%	70%	56%	45%	51%	54%	47%	50%

INDEX: Southern Self-Replacing +\$91 Northern Self-Replacing +\$71 Southern Baldy Maternal +\$99 Northern Baldy Terminal +\$83**TRAITS OBSERVED:** 600WT,SS,FAT,EMA,IMF,Genomics**NOTES:** A typical deep sided Kodiak son with a very quiet nature (purchased as a calf from Dundee Echo Park)54 **PURCHASER**..... **PRICE \$**.....

22

Dundee Kodiak R094

(H)**D.O.B.**
13/07/2020**Rego No.**
RK2R094**Account.**
GE & KM Kneipp

MAWARRA UNIQUE C041 (AI) (H)

YARRAM UNIQUE F181 (H)

YARRAM FLOSSIE A096 (H)

SIRE: COURALLIE KODIAK K592 (AI) (H)

KIWI ZABEST Z3 (IMP NZL) (H)

COURALLIE Z3 PRUDENCE F214 (AI) (H)

COURALLIE A230 PRUDENCE C095 (H)

MAWARRA NOSTALGIA (H)

RED HILL BLUE BOY (H)

RED HILL EARLY MORN U925 ET (AI) (ET) (H)

DAM: DUNDEE CHERRY RIPE 67 (AI) (ET) (H)

SMITHSTON POT LUCK P021 (H)

SMITHSTON CHERRY RIPE V042 (H)

SMITHSTON CHERRY RIPE S129 (AI) (H)



BW	200	400	600	MCW	Milk	SS	CWT	EMA	Rib	Rump	RBY%	IMF%
+4.0	+24	+40	+51	+63	+18	+0.6	+34	+3.9	-0.5	-0.3	+1.4	+0.0
67%	65%	65%	67%	60%	52%	72%	59%	49%	55%	58%	51%	55%

INDEX: Southern Self-Replacing +\$59 Northern Self-Replacing +\$49 Southern Baldy Maternal +\$64 Northern Baldy Terminal +\$57**TRAITS OBSERVED:** 600WT,SS,FAT,EMA,IMF,Genomics**NOTES:** Another long bodied quiet Kodiak son (purchased as a calf from Dundee Echo Park)**PURCHASER**..... **PRICE \$**..... 55

23

Dundee Billabong R101

(H)

D.O.B.
19/11/2020

Rego No.
RK2R101

Account.
GE & KM Kneipp

KAROONDA LINGO (AI) (H)

SOUTH BOOROOK BOMBAY (H)

S BOOROOK BRIDESMAID D34 (AI) (H)

SIRE: DUNDEE BILLABONG M023 (H)

WALLAN CREEK ZEFFER D085 (H)

SOUTH BOOROOK DELIGHT H26 (AI) (H)

S BOOROOK DELIGHT W122 (H)

VENA PARK SHARKA (H)

CHURCHILL TITANIC ET2 (AI) (ET) (H)

WIDGIEWA HILLARY K368 ET5 (ET) (H)

DAM: DUNDEE LUSTRE 282 (AI) (H)

HAZEL DOWNS PACEMAKER 2 (H)

DUNDEE LUSTRE 231 (H)

DUNDEE LUSTRE 198 (H)



BW	200	400	600	MCW	Milk	SS	CWT	EMA	Rib	Rump	RBY%	IMF%
+8.2	+38	+59	+87	+85	+12	+1.3	+47	+2.2	-0.3	+0.2	+0.6	-0.2
66%	64%	65%	67%	58%	52%	71%	57%	44%	51%	55%	47%	51%

INDEX: Southern Self-Replacing +\$95 Northern Self-Replacing +\$74 Southern Baldy Maternal +\$97 Northern Baldy Terminal +\$76

TRAITS OBSERVED: 600WT,SS,Genomics

NOTES: A much younger sire here, the best is still ahead of this bull (purchased as a calf from Dundee Echo Park)

56 **PURCHASER**..... **PRICE \$**.....

24**Battalion Kodiak R081****(H)****D.O.B.**
10/12/2020**Rego No.**
BHER081**Account.**
GE & KM Kneipp

MAWARRA UNIQUE C041 (AI) (H)

YARRAM UNIQUE F181 (H)

YARRAM FLOSSIE A096 (H)

SIRE: COURALLIE KODIAK K592 (AI) (H)

KIWI ZABEST Z3 (IMP NZL) (H)

COURALLIE Z3 PRUDENCE F214 (AI) (H)

COURALLIE A230 PRUDENCE C095 (H)

FAULKLAND HAMILTON (AI) (H)

SUGARLOAF JIM JIM B302 (AI) (H)

SUGARLOAF JEWEL W098 (H)

DAM: DUNDEE BETTY 40 (TW) (H)

ECHO PARK EASTON PLAINS (H)

ECHO PARK BETTY 30 (H)

ECHO PARK BETTY 23 (AI) (H)



BW	200	400	600	MCW	Milk	SS	CWT	EMA	Rib	Rump	RBY%	IMF%
+6.5	+36	+64	+86	+95	+13	+1.6	+52	+3.9	-1.0	-0.9	+1.7	-0.3
67%	65%	65%	67%	59%	50%	64%	58%	47%	54%	57%	49%	54%

INDEX: Southern Self-Replacing +\$109 Northern Self-Replacing +\$92 Southern Baldy Maternal +\$109 Northern Baldy Terminal +\$86**TRAITS OBSERVED:** Genomics**NOTES:** Another very young bull with plenty of potential (purchased as a calf from Dundee Echo Park)**PURCHASER**..... **PRICE \$**..... 57



LIVESTOCK CARRIERS

ALSO CARRYING

WOOL * HAY * MACHINERY

Locally owned & operated

Daryl has been in business in the local area for over 50 years.

He and wife Lyn operate their business from "Lakeside" Glen Innes, where they will continue to serve the local community.

Daryl & Lyn now have a 30ft tabletop with a non-bruise sheep and cattle float.



Ph. (02) 6732 5610

Daryl 0429 342 206 / Lyn 0427 010 916

"Lakeside" Shannon Vale Road, Glen Innes NSW
daryl.lynmeehan@activ8.net.au

co
op

KILLARNEY CO-OP.

KILLARNEY CO-OPERATIVE LIMITED

Phone 07 4664 1188

www.killarneycoop.com



*For all your
stockfeed
requirements*

KILLARNEY CO-OP

100TH 1922 - 2022

BIRTHDAY
CELEBRATION

20th-22nd October 2022

Tickets from www.killarneycoop.com or phone 0746641188



D.O.B.
14/09/2020

Rego No.
JENR0034

Account.
JE Newnham & Co

INJEMIRA ADVANCE C085 (H)
DEVON COURT ADVANCE F052 (H)
DEVON COURT LIONESS A207 (H)

SIRE: TALBALBA ADVANCE L131 (H)

COOTHARABA MAGNUM (H)
TALBALBA CHOICE D058 (AI) (H)
TALBALBA CHOICE 77 (AI) (H)
YAVENVALE FREEDOM (H)

CARA PARK FREEDOM G148 (H)
CARA PARK MATCHLESS B654 (H)

DAM: CARA PARK LOYALTY L548 (H)

MAWARRA UNIQUE C041 (AI) (H)
CARA PARK LOYALTY H281 (H)
CARA PARK LOYALTY B609 (AI) (H)

CARA PARK
EST. HEREFORDS 1915

BW	200	400	600	MCW	Milk	SS	CWT	EMA	Rib	Rump	RBY%	IMF%
+5.1	+30	+51	+81	+76	+13	+1.2	+52	+5.5	+0.3	+0.6	+1.3	+1.3
72%	64%	66%	69%	59%	42%	71%	55%	44%	48%	52%	46%	44%

INDEX: Southern Self-Replacing +\$123 Northern Self-Replacing +\$110 Southern Baldy Maternal +\$126 Northern Baldy Terminal +\$98

TRAITS OBSERVED: BWT,400WT(x2),600WT(x2),SS,FAT,EMA,IMF

NOTES: Low Birth Weight would be suitable for heifer joining. Moderately framed, well fleshed bull with good carcass data. Top 15% Eye Muscle Area and Intramuscular Fat and top 20% Retail Beef Yield.

60 **PURCHASER**..... **PRICE \$**.....



D.O.B.
13/08/2020

Rego No.
JENR0016

Account.
JE Newnham & Co

MAWARRA UNIQUE C041 (AI) (H)

YARRAM UNIQUE F107 (AI) (H)

YARRAM BLESSING A187 (H)

SIRE: EDR MOJO (H)

CL 1 DOMINO 9121W 1ET (IMP USA) (AI) (ET) (H)

EDR GOLDEN J133 (AI) (H)

EDR GOLDEN C702 (AI) (H)

WARRINGA GOOGLE G23 (H)

GLENDAN PARK KNOCKOUT K160 (ET) (H)

GLENDAN PARK LASS G013 (AI) (H)

DAM: CARA PARK WONDER LASS N736 (H)

MAWARRA UNIQUE C041 (AI) (H)

CARA PARK WONDER LASS G181 (H)

CARA PARK WONDER L V038 (H)

CARA PARK
EST. HEREFORDS 1915

BW	200	400	600	MCW	Milk	SS	CWT	EMA	Rib	Rump	RBY%	IMF%
+2.3	+27	+47	+64	+47	+23	+1.6	+50	+5.7	+0.0	+0.0	+1.8	+0.6
71%	64%	65%	64%	55%	43%	59%	53%	44%	49%	53%	46%	50%

INDEX: Southern Self-Replacing +\$125 Northern Self-Replacing +\$114 Southern Baldy Maternal +\$140 Northern Baldy Terminal +\$109

TRAITS OBSERVED: BWT,400WT(x2),600WT(x2),SS,FAT,EMA,IMF

NOTES: Very Low Birth Weight, would be suitable for heifer joining. An attractive well shaped bull with good carcass. Top 10% Eye Muscle Area and Retail Beef Yield. Also top 10% Milk.

PURCHASER..... **PRICE \$**..... 61



D.O.B.
10/10/2020

Rego No.
JENR0043

Account.
JE Newnham & Co

MAWARRA UNIQUE C041 (AI) (H)

YARRAM UNIQUE F107 (AI) (H)

YARRAM BLESSING A187 (H)

SIRE: EDR MOJO (H)

CL 1 DOMINO 9121W 1ET (IMP USA) (AI) (ET) (H)

EDR GOLDEN J133 (AI) (H)

EDR GOLDEN C702 (AI) (H)

INJEMIRA ADVANCE V093 (H)

CARA PARK ADVANCE B631 (AI) (H)

CARA PARK TREASURE T277 (H)

DAM: CARA PARK MARSHALL LASS K414 (AI) (H)

MAWARRA UNIQUE C041 (AI) (H)

CARA PARK MARSHALL LASS G180 (H)

CARA PARK MARSHALL LASS C749 (AI) (H)

CARA PARK
EST. HEREFORDS 1915

BW	200	400	600	MCW	Milk	SS	CWT	EMA	Rib	Rump	RBY%	IMF%
+5.1	+35	+58	+85	+64	+22	+2.0	+57	+5.6	+0.2	+0.3	+1.6	+0.8
73%	66%	67%	69%	60%	44%	70%	56%	47%	50%	54%	48%	49%

INDEX: Southern Self-Replacing +\$140 Northern Self-Replacing +\$121 Southern Baldy Maternal +\$141 Northern Baldy Terminal +\$106

TRAITS OBSERVED: BWT,400WT(x2),600WT(x2),SS,FAT,EMA,IMF

NOTES: Low Birth Weight would be suitable for heifer joining. An attractive young bull, the second youngest in our draft. Top 10% Eye Muscle Area, top 15% Retail Beef Yield, and top 15% Milk.

62 **PURCHASER**..... **PRICE \$**.....



D.O.B.
08/08/2020

Rego No.
JENR0012

Account.
JE Newnham & Co

MAWARRA UNIQUE C041 (AI) (H)

YARRAM UNIQUE F107 (AI) (H)

YARRAM BLESSING A187 (H)

SIRE: EDR MOJO (H)

CL 1 DOMINO 9121W 1ET (IMP USA) (AI) (ET) (H)

EDR GOLDEN J133 (AI) (H)

EDR GOLDEN C702 (AI) (H)

RED HILL BLUE BOY (H)

BATTALION BUCKSHOT (AI) (ET) (H)

COURALLIE CONSTANCE V086 (H)

DAM: CARA PARK WONDER LASS L509 (AI) (H)

BOWMONT STORM C093 (H)

CARA PARK WONDER L H237 (AI) (H)

CARA PARK WONDER L Z424 (H)

CARA PARK
EST. HEREFORDS 1915

BW	200	400	600	MCW	Milk	SS	CWT	EMA	Rib	Rump	RBY%	IMF%
+3.5	+27	+43	+58	+40	+20	+1.3	+40	+4.9	+0.7	+1.2	+0.6	+1.0
73%	66%	67%	70%	60%	43%	73%	57%	48%	52%	56%	50%	50%

INDEX: Southern Self-Replacing +\$104 Northern Self-Replacing +\$91 Southern Baldy Maternal +\$111 Northern Baldy Terminal +\$84

TRAITS OBSERVED: BWT,400WT(x2),600WT(x2),SS,FAT,EMA,IMF

NOTES: Low Birth Weight would be suitable for heifer joining. Top 20% Eye Muscle Area and Top 25% for Intramuscular Fat.

PURCHASER..... **PRICE \$**..... 63

29**Cara Park Advance R0015****(H)****D.O.B.**
13/08/2020**Rego No.**
JENR0015**Account.**
JE Newnham & Co

INJEMIRA ADVANCE C085 (H)
 DEVON COURT ADVANCE F052 (H)
 DEVON COURT LIONESS A207 (H)

SIRE: TALBALBA ADVANCE L131 (H)

COOTHARABA MAGNUM (H)
 TALBALBA CHOICE D058 (AI) (H)
 TALBALBA CHOICE 77 (AI) (H)
 RED HILL BLUE BOY (H)
 BATTALION BUCKSHOT (AI) (ET) (H)
 COURALLIE CONSTANCE V086 (H)

DAM: CARA PARK PEARL N714 (H)

MAWARRA UNIQUE C041 (AI) (H)
 CARA PARK PEARL K477 (H)
 CARA PARK PEARL F019 (AI) (H)

CARA PARK
 EST. HEREFORDS 1915

BW	200	400	600	MCW	Milk	SS	CWT	EMA	Rib	Rump	RBY%	IMF%
+7.2	+33	+54	+83	+84	+14	+0.9	+47	+4.9	-0.5	-0.6	+1.8	+0.8
72%	64%	66%	69%	59%	44%	71%	56%	45%	49%	53%	47%	46%

INDEX: Southern Self-Replacing +\$100 Northern Self-Replacing +\$82 Southern Baldy Maternal +\$92 Northern Baldy Terminal +\$69**TRAITS OBSERVED:** BWT,400WT(x2),600WT(x2),SS,FAT,EMA,IMF**NOTES:** Good carcass bull. Top 20% Eye Muscle Area and top 10% Retail Beef Yield on Breedplan.64 **PURCHASER**..... **PRICE \$**.....

30**Cara Park Knockout R0055****(H)****D.O.B.**
15/11/2020**Rego No.**
JENR0055**Account.**
JE Newnham & Co

BOWMONT STORM B720 (H)

WARRINGA GOOGLE G23 (H)

WARRINGA FERN D10 (H)

SIRE: GLENDAN PARK KNOCKOUT K160 (ET) (H)

COOTHARABA MAGNUM (H)

GLENDAN PARK LASS G013 (AI) (H)

GLENDAN PARK LASS B107 (H)

BANEMORE POMPEII T036 (AI) (H)

YAVENVALE FREEDOM (H)

YAVENVALE MELLOW U314 (H)

DAM: CARA PARK PEARL J360 (H)

INJEMIRA ADVANCE V093 (H)

CARA PARK PEARL C701 (AI) (H)

CARA PARK PEARL Z472 (H)

CARA PARK
EST. HEREFORDS 1915

BW	200	400	600	MCW	Milk	SS	CWT	EMA	Rib	Rump	RBY%	IMF%
+7.3	+39	+61	+86	+81	+14	+1.6	+49	+3.3	+0.1	+0.3	+1.0	+0.2
70%	65%	67%	69%	60%	50%	69%	57%	47%	51%	54%	49%	49%

INDEX: Southern Self-Replacing +\$97 Northern Self-Replacing +\$79 Southern Baldy Maternal +\$84 Northern Baldy Terminal +\$59**TRAITS OBSERVED:** BWT,400WT(x2),600WT(x2),SS,FAT,EMA,IMF**NOTES:** An attractive, moderately framed, well- balanced bull. The youngest bull in our draft.**PURCHASER**..... **PRICE \$**..... 65

INSIGNIA Company

Insignia Co. provides customised marketing merchandise specialising in trucker hats!



As cattle breeders ourselves we understand your industry



WWW.INSIGNIACO.COM.AU

f @insigniacompany i @insigniacustomcompany

✉ admin@insigniaco.com.au ☎ 02 6734 4134



Notes

.....

.....

.....

.....

.....

.....

.....

.....

.....

.....

.....

.....

.....

.....

.....

.....

.....

.....

.....

.....

.....



Thank you

Thank you to all successful purchasers, under bidders and all who attended the sale for your support. Any inspection and consideration of our cattle is much appreciated.

Grant, Kylie, Graeme & Natalie



Purchaser Details

NAME: _____

Trading Name: _____

Address: _____

Phone: _____ Mobile: _____

Email: _____

PIC Number: _____ Bid Card Number: _____

AGENT DETAILS

Company Name: _____

Agent Name: _____

Phone: _____ Mobile: _____

PURCHASE DETAILS

Lots Purchased: _____

Transport Required: Yes No

Insurance Required: Yes No

Society Transfer Required: Yes No

Herd Ident (if applicable): _____

Signature: _____

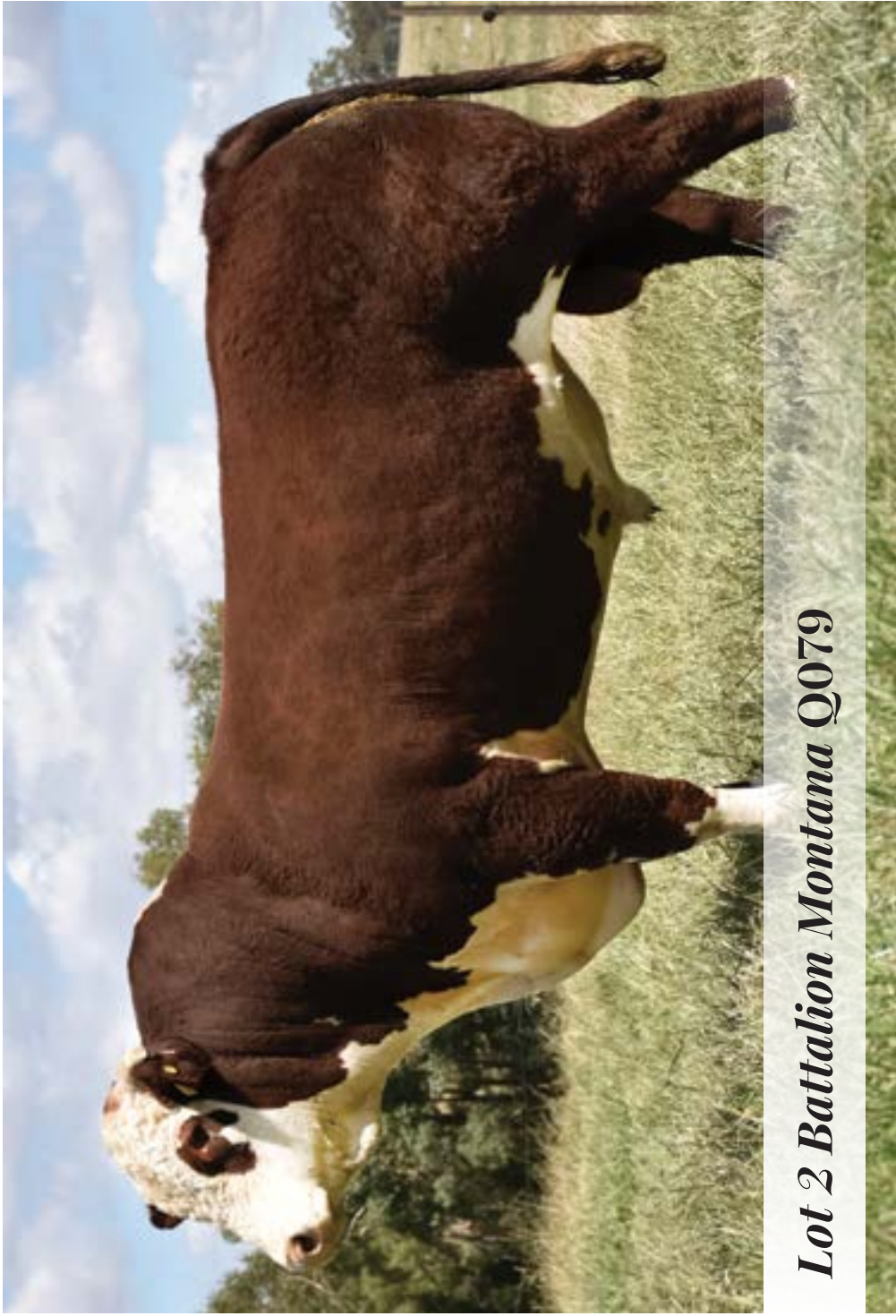
Date: _____

THIRD ANNUAL SALE JULY 2021



TOP PRICE BULL





Lot 2 Battalion Montana Q079

*“Pleasure in the job puts perfection
in the work”* -Aristotle

