

BH
BATTALION
HEREFORDS
CARA PARK

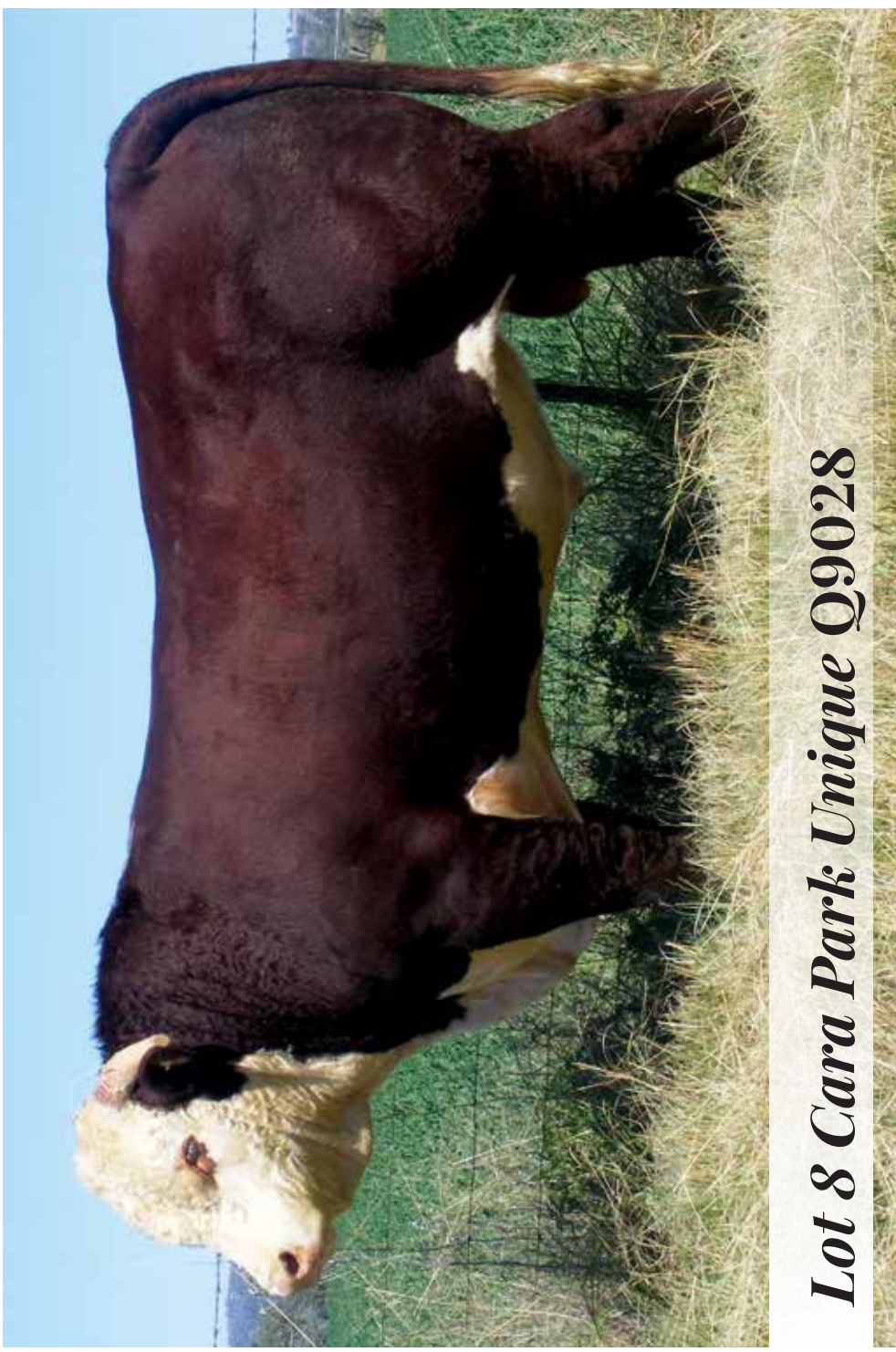
EST. **HEREFORDS** 1975



3rd
Annual

Battalion & Cara Park Bull Sale
Mon 5th July 2021 - 1pm
Glen Innes Showground





Lot 8 Cara Park Unique Q9028

Third Annual Battalion & Cara Park Bull Sale

SALE MONDAY 5TH JULY 2021
Sale at 1pm, Inspection from 10am
Offering 30 Hereford Bulls

Complimentary lunch provided



Grant & Kylie Kneipp
T/AS GE & KM Kneipp
"Wattle Dale"

1259 Nine Mile Road
Dundee NSW 2370

Ph: 02 6734 4134

Mob: 0428 726 771

grant@battalion.com.au

www.battalionherefords.com.au



Graeme & Natalie Newnham
T/AS JE Newnham & Co
"Cara"

285 Reserve Creek Road
Myall Creek, Delungra NSW 2403

Ph: 02 6723 6446

Mob: 0428 236 446

g.n.newnham@gmail.com



AUCTIONEER
Paul Dooley
0458 662 646



AGENTS

Nathan Purvis 0427 324 078
Shad Bailey 0458 322 283
Craig Thomas 0428 669 500
Steve Daley 0400 406 667

HOW TO REGISTER with

ELITE LIVESTOCK AUCTIONS



Simply go to www.elitelivestockauctions.com.au using your desktop, laptop, iPad, iPhone or android device.



Click on the **"Sign Up"** page / link



Create a bidding profile using the bidder registration page.
(You can either register as a livestock agent, company or private buyer)



Agree to the Elite Livestock Auctions Terms & Conditions and the Selling Agents Sale Terms & Conditions as printed in the official Sale Catalogue



Click **"Register"**



You will then be notified by email that an account has been created.



Once an account has been created you are all **"Set to Bid"**



Each Auction can then be viewed by clicking **"Live Auction"** logo on the Elite Livestock Auctions website.



Once you receive email notification that your account has been created please go to the sale you wish to bid at and click **"Request to Bid"**



The sale will then approve your application to bid and on the sale catalogue you will see **"✓ Bid Request Approved"**



On Sale day simply login, click **"Enter Auction"** on the catalogue page and you can start bidding.
(There is no need for software download)



At the completion of the auction, invoicing will be carried out as per your registration details by the Selling Agents.

Having trouble registering and logging in?

1300 259 742



STOCKLIVE

Elite Livestock Auctions ABN 19604 627 607
Level 19, 123 Eagle Street, Brisbane, QLD 4000

P : 1300 259 742 F : 07 3041 5053
www.elitelivestockauctions.com.au

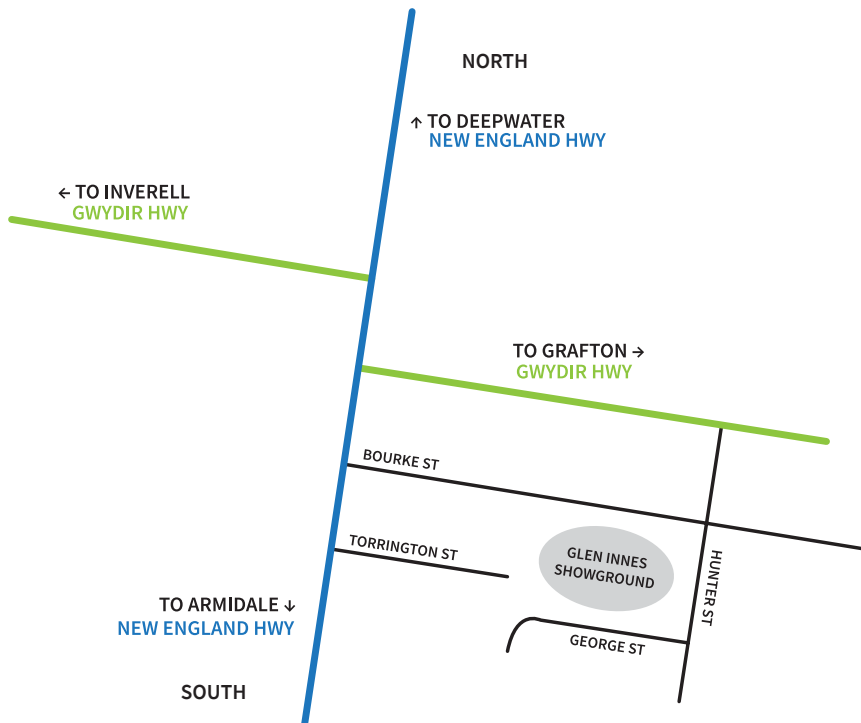
Sale Location:

Glen Innes Showground

Torrington St, Glen Innes NSW 2370

Entry to the showground is by Torrington Street gate

Truck entry via Hunter Street



A herd of cattle, including several red and white Herefords, are grazing in a lush green field. The image is slightly blurred, giving it a soft, pastoral feel.

Sale Information

INSPECTION

Bulls are available for inspection from 10am on sale day. We encourage inspection of both Battalion and Cara Park bulls on property prior to sale day by appointment. This gives you the opportunity to view the bulls in their natural environment and possibly inspect other animals in the pedigree to assist you in making your decision. **Battalion Herefords will also be holding an on property open day on Monday 28th June 2021, 9am to 4pm.**

BUYERS REGISTRATION

The Buyers number system will be in operation. All prospective purchasers are asked to register prior to the sale.

ONLINE & PHONE BIDDING

If you are unable to attend on the day, the sale will be conducted in conjunction with Elite Livestock Auctions. Please refer to page 4 for further information. Phone bidding can be arranged through Colin Say & Co or your preferred agent.

VISITOR SAFETY

All of the sale bulls have been screened for temperament and are a quiet under normal circumstances, however ***Visitors enter the cattle pens at their own risk. Children/Prams must not enter the sale pens.***

DISABLED ACCESS

Disabled access is available at the showground and into the stands at the sale yards.

OUTSIDE AGENT REBATE

A rebate of 2% is offered to outside agents who introduce buyers to the selling agent in writing at least 24hrs prior to the sale and settle accounts on the purchaser's behalf within 7 days of the sale

GST: All animals are sold exclusive of GST. GST is added to your invoice.

TRANSPORT

Carriers will be available on sale day. If you wish to bring your own truck, we will accommodate the release of your animal at the completion of the auction. All animals need to be transported from the sale venue by 5pm Tuesday the 6th of July 2021 unless prior arrangements have been made with the vendors. Formal possession, risk and expenses pass to the buyer at the fall of the hammer. We recommend having a quiet animal (e.g. cow, steer etc.) yarded and ready to greet your bull when he arrives home to minimise stress on the bull and help it adjust to its new environment.

INSURANCE

Bulls are a valuable and vulnerable asset to your business. We highly recommend insuring your new purchase at the completion of the sale. Insurance will be available on site.

Please bring your catalogue to the sale



Recommended Accommodation:

Rest Point Motor Inn

72 New England Hwy, Glen Innes NSW 2370

Ph: (02) 6732 2255

www.restpointmotel.com.au

Book direct and mention our sale for best rates

Camp at the Glen Innes Showground

Campers with pets, or travelling with horses are always welcome. Reasonable overnight rates and available for large groups.

The Showground is close to all Glen Innes town facilities, in a quiet off-highway location. It is easy to access with large vehicles and caravans.

www.gleninnesshowground.com

RPG
Rest Point Group

**Rest Point Motor Inn
Hereford Steakhouse
Char Grill**

The only choice in Glen Innes...

A place to sleep ~ A place to eat ~ A place to meet ~ A place to celebrate

Ph: 02 6732 2255

72 New England Hwy
Glen Innes NSW 2370

<https://restpointmotel.com.au/>
info@restpointmotel.com.au



Herd Health

BATTALION – HERD HEALTH

All Battalion bulls have been sire verified and tested negative for Pestivirus.

They have received:

B12 & ADE 2/2/21

Exifluke, Dectomax & Multimin 26/3/21

Booster Vaccinations Due:

7 in 1 – Booster due May 2022

BEF Vaccine (3 day sickness) – Booster due Feb 2022

CARA PARK – HERD HEALTH

All Cara Park bulls have been tested negative for Pestivirus

They have received:

BEF Vaccine (3 day sickness)

Vibrio

7 in 1 booster

Cydetin Pour-on

Hereford Group Breedplan

The Breedplan values in this catalogue were calculated in the 2019 Hereford Group Breedplan evaluation. Each reported trait shows an EBV (estimated breeding value) and its accuracy level. The EBV provides the current estimate of the bulls genetic merit for that trait, relative to the overall base for the Hereford breed. It indicates how its progeny should perform relative to those of other bulls in the breed. The accuracy of an EBV will be higher for traits with higher heritability and will increase as more performance information on an animal and its relatives become available. The Accuracy of an EBV is reported as a percentage. EBV’s with higher accuracy will change less than EBV’s of low accuracy when more performance records are analysed.

EBV Percentile table (abbreviated) for Hereford Animals born in 2019

Percentile Band	Weight Traits				Milk	Carcase Traits				
	BW	200	400	600	MILK	EMA	RIB	RUMP	RBV	IMF
Breed	+4.1	+33	+55	+78	+17	+3.6	+0.7	+0.8	+0.8	+0.5
Avg	KG	KG	KG	KG	KG	SQCM	MM	MM	%	%

Performance supplements for beef cattle



Deliver protein and minerals to optimise production

Improving results in beef cattle systems requires year-round nutrition planning. Performance Feeds provides convenient, custom nutrition supplements that optimises available forage, minerals, and protein for herd health and profitability:

Anipro Liquid Supplements

- Molasses based liquid supplement
- Provides essential protein, minerals and vitamins
- Up to 27% improvement in forage intake
- Fully serviced PCAS approved program saves time and money

WeatherPro

- Waterproof and highly palatable loose lick
- Effectively manage mineral and vitamin deficiencies
- Suits all classes of grazing cattle
- Improve fertility, growth and immunity

Call 1800 300 593
performancefeeds.com.au



**PERFORMANCE
FEEDS**



Welcome to our third Annual Sale

We would like to welcome you to the 3rd Annual Battalion & Cara Park Bull Sale to be held on Monday 5th July at 1pm EST at the Glen Innes Showgrounds. Inspections from 10am.

The past 12 months has seen many challenges across the agricultural industry, from drought recovery to Covid-19 and recently the floods.

The strong cattle market has continued to see the industry jump from strength to strength with many new record prices set across all breeds.

We are experiencing a terrific season and we are very pleased with the draft of bulls for this year's sale. We have carefully selected breed leading genetics that perform in many climates, drive performance and have the ability to add financial gain for the commercial or stud breeder. Purchasing the right genetics has never been more important.

Covid-19 is still causing havoc, although perhaps not to the extent of last year. We are looking at a world of social distancing being the new "normal". Therefore, we are providing an opportunity for online bidding with Elite Livestock Auctions. This may help mitigate any of the uncertainty of the current times and government regulations. As per usual there will also be agents available on sale day should you wish to bid via phone.

The bulls have all passed a Bull Breeding Soundness Evaluation by a certified Veterinarian.

We welcome and encourage on farm inspections and are happy to discuss any animals at your convenience.

Looking forward to seeing you either before or at this year's sale.

Grant, Kylie, Graeme & Natalie



Ph: 02 6732 1171



MVRL35318

All new car Servicing
(Retaining your Statutory Warranty)

Wheel Alignments

Batteries

Child Restraints

Roadworthy Inspections

Brake & Clutch Services

Exhaust Repair & Manufacture

4x4 Exhaust Systems

Norco Rural Glen Innes

Has everything you need for a Happy Health Herd



- Animal Health & Nutrition
- Wide range of Norco Stockfeed
- Seed & Ag Chem
- Fencing Materials
- On-Farm advice



When you shop with Norco Rural you're supporting Aussie farmers, not overseas investors .. That makes great sense!

**Norco Rural is proud to support the
Annual Battalion and Cara Park Herefords Bull Sale**

Glen Innes 165 Lang Street Ph: 6739 7400

Norco Rural - Because there's a farmer in all of us

Norco - an Australian, farmer owned dairy co-operative since 1895





Our History

Four generations of proud Hereford breeders have called our family property home. “Wattle Dale”, 37kms North East of Glen Innes is situated in a cool climate area of the high country in Northern NSW. A location well suited for the production of quality Hereford cattle.

I have been a passionate Hereford breeder since my earliest memories as a child and purchased my first stud female (Emu Hills Cath S724) at the age of 14. In 2006 the Battalion stud was registered and further stud females were purchased from dispersal sales in its early years of establishment. Subsequent females including Moorlands Cherry Ripe W155, Courallie Constance V086, Courallie PR Christian Y312 and Smithston Silky Z231 became just some of the foundation females of the stud and to this day two of those cows have proven to be some of the most influential females within the Battalion herd. Our two most prolific female lines Constance and Cherry Ripe are still producing our top animals each year.

Realising how valuable some of our original females were proving to be, we decided to begin flushing our elite matrons with great results. This has allowed us to dramatically lift our bottom line. No expense was spared in developing our herd with a solid foundation of elite females. Purchasing the best on offer from dispersal sales and then flushing those individuals is the method that has dramatically accelerated our rate of improvement and subsequently been a major factor in delivering our strong sale results in recent years.

In late 2019 during the drought and fire season im sure no one will forget, we decided to develop an off-farm business that would not be reliant on the weather and market prices to be successful and stable. We decided to play to our strengths and established Insignia Company. We specialise in custom trucker hats and other marketing merchandise for small and large businesses in Australia and internationally. 18 months on and we have built Insignia Co. into an award-winning enterprise and a successful venture that works well and compliments the cattle stud.



Late 2020 saw us take over “Wattle Dale” from my parents Roger and Flo. The family farm has now yet again been cemented into the Kneipp’s name for another generation. This expansion will enable us to gradually increase our Hereford operation whilst also expanding our young but flourishing Speckle Park Stud.

My wife Kylie and I now have a full house of cattle enthusiasts, with the new addition of our third child, Hailey Ava Kneipp born in November 2020, admired by her brother Travis and sister Grace. More so now than ever our business needs to be successful. Not only are we passionate about producing seedstock, it is our bread and butter. We pride ourselves on our customer service and back our genetics to deliver. We look forward to seeing you at the 3rd annual Battalion & Cara Park Bull Sale.

Grant Kneipp



CARA PARK

EST. **HEREFORDS** 1975

Our History

We have been breeding registered Herefords for 46 years for structural soundness doing ability and on farm performance.

The Cara Park Hereford stud was founded in 1975 with the purchase of a small group of cows & heifers from the famous Bexley stud. These were quickly followed by females from renowned studs such as Windsor, South Caramut, Hillcrest, Thornleigh & Alma Downs.

Windsor Maurice (Grand Champion 1972 Sydney Royal Show), after being retained for use by the Windsor Hereford stud was purchased as a foundation sire. Two years later (during the Beef price slump) in September 1978 we purchased Yarram Boswell at the age of 18 months from Yarram Park. Boswell played an important part in the early development of our stud. We used Boswell for nine joining seasons and sold him as an aged sire for almost double his original purchase price. Over the next few years sires used of note were Invernaion Yukon who sired Cara Park Impact selling at the 1985 Annual Glen Innes Hereford Bull Sale for top price in the unled section to Iolanthe Hereford stud. After securing a quarter share semen rights in Injemira Quest we commenced an annual AI & ET program, Quest left us with a terrific line of females. Also used in our AI program very successfully was Injemira Outback, a son Cara Park Playboy selling for top price at the 1992 Glen Innes Bull Sale to Bundarra Hereford stud.

Since then, over the years we have used the very best genetics available including Yarram Energizer P241 (top price 1996 Wodonga Bull Sale) sire of Cara Park Xpress T311 who sold for a new record price at the Glen Innes Bull Sale in 2000 to Charvel, Yavenvale & Bowmont Hereford Studs. Academy Columbus (Sydney Junior Champion 1993, Senior & Grand Champion 1994). Yarram Pompeii V055 used by AI, with sons selling to Amos Vale, Curracabark & Red Hill studs. Yavenvale Freedom 2008 (top price Yavenvale Annual Sale 2006), sire of Cara Park Freedom C727 selling at the Glen Innes Bull Sale 2009 to Foxforth

Hereford Stud. These bulls were followed by two more AI sires in Injemira Advance V093 sire of Cara Park Advance B631 selling at Glen Innes 2008 to Emu Holes Hereford stud. Also, Bowmont Storm C093, he has been one of the most influential sires used in our herd, leaving us with big roomy productive females. Mawarra Unique C041 (Grand Champion Wodonga 2009) sire of Cara Park Unique J324 the record selling bull at the 2015 Annual



Cara Park Xpress T311



Glen Innes Hereford Bull Sale selling to the Ardno Hereford Stud, J324's dam is by Storm C093. Also by Mawarra Unique C041 out of Storm C093 cows and selling for the second top price at their respective Annual Glen Innes Hereford Bull Sales, 2017 & 2018 was Cara Park Unique L581 selling to Avon View Hereford Stud & Cara Park Monarch M647 to Battalion Hereford Stud. The Unique / Storm cross has proven to be a very successful one, producing progeny with moderate birth weight, high growth and excellent carcase, these traits are major profit drivers for the beef producer. At the 2013 Glen Innes Bull Sale we purchased the top priced bull in Battalion Buckshot G02, from his first crop of calves a son Cara Park Buckshot K490 sold in 2016 for the third top price of that sale to Hylands Hereford Stud.

Sires introduced in recent years are Glendan Park Knockout K160, (Junior & Grand Champion 2016 Wodonga Bull Sale) he has three sons in this year's sale. Talbalba Advance L131 (Top price Horn bull at the 2017 Annual Talbalba Bull sale) has two very good sons catalogued for this year's sale. EDR Mojo M164 (Intermediate Champion & second top price at 2018 Wodonga Bull Sale). He has six sons catalogued for this sale.

This year will see our final offering of Mawarra Unique C041 sons. Unique has proven to be an invaluable sire in our herd and within the Hereford breed. He has five very good sons being offered this year, all out of Bowmont Storm C093 cows. These cows are amongst the very top end of our herd.

In August 2020 we were fortunate to secure a new sire for our breeding program that we believe will advance our herd greatly on many fronts. Talbalba Emperor P043 represents the extremely rare combination of exceptional phenotype, performance and carcase data. We have used Emperor P043 extensively on heifers as well as cows in our spring joining program and look forward to his calves arriving in July.

Our Hereford cattle are run in conjunction with a merino sheep operation under commercial conditions. We are proud of our cattle and welcome enquiries and on property inspections.

We also look forward to seeing you on sale day.

Kind Regards

Graeme, Natalie, Harry, Jack & Jane.



Vanderfield Inverell

**Equipment Sales,
Parts, Service
and field support**

**LARGE TRACTORS
GATOR UTILITY VEHICLES
MOWERS
UTILITY TRACTORS
PLANTERS
SLASHERS & IMPLEMENTS**



JOHN DEERE



VANDERFIELD

12 Swanbrook Rd Inverell NSW 2360 | PH: 02 6728 2801 | reception.inverell@rdo-vanderfield.com.au

Vanderfield.com.au

ENQUIRE TODAY



DNA SAMPLING SIMPLIFIED

with the Allflex TSU
(Tissue Sampling Units)

- Highest quality sample method
- Vials fit in standard lab well plate (96 vials)
- Efficient and cost effective
- Available with paired NLIS and management tags



www.allflex.com.au

65
YEARS
AND READY FOR MORE.

Achmea, Australia's specialist farm insurer, is delighted to support the Battalion & Cara Park Bull Sale on 5th July 2021

“With competitive rates, insure your stud
bulls with Achmea today. To finalise
your cover, contact me directly.”

Local Farm Insurance Specialist,
ALLAN COWAN



Local Farm Insurance Specialist Allan Cowan | 0417 156 837 | allan.cowan@achmea.com.au

achmea.com.au



The information in this advertisement is general advice only and does not take into account your individual objectives, financial situation or needs (your personal circumstances).
Before using this information to decide whether to purchase the insurance policy, you should consider your personal circumstances and the relevant Product Disclosure
Statement available from the 'Downloads' section of our website www.achmea.com.au. Achmea Schadeverzekeringen N.V. ABN 86 158 237 702 AFSL 433984.

Cara Park Monarch M647

(H)



D.O.B.
12/07/2016

Rego No.
JENM647

Reference Sire

GH DIFFERENCE BRITISHER 45L (IMP CAN) (H)

GH NEON 17N (IMP CAN) (H)

GH SIR SIMBA LASS 107K (H)

SIRE: MAWARRA UNIQUE C041 (AI) (H)

MAWARRA KAHLUA (AI) (H)

MAWARRA MINERVA 554 ET1 (AI) (ET) (H)

MAWARRA MINERVA 357 (H)

GLENDAN PARK STORM W134 (H)

BOWMONT STORM C093 (H)

BOWMONT MARITANA W168 (AI) (H)

DAM: CARA PARK WONDER L H220 (AI) (H)

CARA PARK PLAYBOY K672 ET1 (ET) (H)

CARA PARK WONDER LASS C714 (AI) (H)

CARA PARK WONDER L Z424 (H)



BW	200	400	600	MCW	Milk	SS	CWT	EMA	Rib	Rump	RBV%	IMF%
+6.0	+45	+86	+122	+104	+20	+1.9	+89	+7.1	-1.1	-1.1	+3.0	+0.6
82%	76%	78%	79%	71%	62%	81%	69%	59%	63%	67%	60%	62%

INDEX: Southern Self-Replacing +\$197 Northern Self-Replacing +\$174 Southern Baldy Maternal +\$193 Northern Baldy Terminal +\$145

TRAITS OBSERVED: BWT,200WT,400WT,600WT,SS,FAT,EMA,IMF,Genomics **GENETIC CONDITION:** POLL C-HH,DLF,IEF,HYF,GG-PLD,

NOTES: REFERENCE SIRE. Monarch was purchased for \$16,000 by Battalion Herefords in 2018. Having inspected this bull when he was just 4 months old on his mother, we knew we had found a real exciting prospect. He was lightly prepared for sale in the middle of a drought yet displayed exceptional thickness and doing ability. A very strong top line with great shape and width through his hindquarters, he is a sire that we think ticks all the boxes. He has the best feet we have seen and one of the quieter animals we have ever bred or owned.

Battalion Black Hawk K7

(H)



D.O.B.
13/09/2014

Rego No.
BHEK7

Reference Sire

REEDY CREEK DEBONAIR 206 (H)

KAROONDA LINGO (AI) (H)

KAROONDA MINERVA 89 (H)

SIRE: SOUTH BOOROOK BOMBAY (H)

COURALLIE ASCOT (AI) (H)

S BOOROOK BRIDESMAID D34 (AI) (H)

S BOOROOK BRIDESMAID Z18 (H)

COOTHARABA MAGNUM (H)

MAWARRA VIRGINIAN (H)

MAWARRA CHERRY RIPE 263 (H)

DAM: BATTALION CHERRY RIPE 6 (AI) (H)

ONSLow SHARKA T019 (H)

MOORLANDS CHERRY RIPE W155 (H)

MOORLANDS CHERRY RIPE Q028 (H)



BW	200	400	600	MCW	Milk	SS	CWT	EMA	Rib	Rump	RBV%	IMF%
+3.7	+33	+70	+100	+87	+19	+2.1	+71	+4.9	+0.4	+1.0	+1.6	-0.3
91%	92%	92%	93%	81%	59%	85%	80%	69%	72%	78%	69%	74%

INDEX: Southern Self-Replacing +\$166 Northern Self-Replacing +\$150 Southern Baldy Maternal +\$180 Northern Baldy Terminal +\$139

TRAITS OBSERVED: BWT,200WT,400WT,600WT,SS,FAT,EMA,IMF,Genomics **GENETIC CONDITION:** GGPLD,HYF,DLF,IEF,IEF,HY-F,DLF,

NOTES: REFERENCE SIRE. Sold in 2016 for the record top price of \$45,000 to Franco and Thornleigh Hereford Studs at the Glen Innes Bull Sale. A bull with an exceptional muscle pattern, emphasised by a broad flat top line and plenty of butt shape, an eye-catching sire who has proven to breed consistent draft leading animals at numerous studs. He scanned a raw IMF measurement of 6.5 at 21months of age. His Dam is one of our best and offers superior udder shape.

Kaludah Powerhouse L478

(H)



D.O.B.
26/06/2015

Rego No.
MPSL478

Reference Sire

INJEMIRA JACK KNIFE U313 (H)

KALUDAH MISSION F037 (AI) (H)

KALUDAH LINNET 322 (AI) (H)

SIRE: KALUDAH NUGGET J920 (H)

KALUDAH REGAL (H)

KALUDAH LASS F118 (H)

KALUDAH LASS C594 (H)

BOWMONT KING U943 (AI) (H)

RED HILL INSIGHT (H)

RED HILL EARLY MORN U909 (H)

DAM: KALUDAH CHLOE B557 (AI) (H)

CHURCHILL VORTEX ET2 (IMP USA) (AI) (ET) (H)

KALUDAH CHLOE X884 (H)

LLANGLOTHAN CHLOE 51 (H)



BW	200	400	600	MCW	Milk	SS	CWT	EMA	Rib	Rump	RBV%	IMF%
+5.5	+30	+49	+69	+72	+13	+1.6	+41	+2.2	+0.2	+0.6	+1.0	-0.7
70%	66%	68%	69%	60%	45%	69%	58%	44%	51%	55%	47%	50%

INDEX: Southern Self-Replacing +\$78 Northern Self-Replacing +\$65 Southern Baldy Maternal +\$73 Northern Baldy Terminal +\$54

TRAITS OBSERVED: 600WT,SS,FAT,EMA,IMF,Genomics **GENETIC CONDITION:** POLL C-HH,GGPHD,DLF,IEF,HYF,IEF,HYF,DLF,

NOTES: REFERENCE SIRE. One of the deeper bodied bulls we have seen, Kaludah Powerhouse was purchased for his impressive overall body capacity, extremely wide and deep with the ability to carry his weight with ease. Unfortunately, only had a small bunch of cows joined to him when we lost him.

Karoonda Taupo

(AI) (H)



D.O.B.
11/03/2016

Rego No.
SKSM336

Reference Sire

PUTE WAQAR (H)

PUTE DUSKY D16 (H)

PUTE BABS 106 (H)

SIRE: LOCHARBURN GERRY 11004 (IMP NZL) (H)

LOCHARBURN HIGH VOLTAGE 0055 (H)

LOCHARBURN BRYONIA 02124 (H)

LOCHARBURN BRYONIA S10 (H)

CHARNOCK HAYMAKER (H)

WALLAN CREEK HAYMAKER D225 (H)

WALLAN CREEK NECKLET W126 (H)

DAM: KAROONDA MARITANA H201 (H)

COOTHARABA INDUS 2 (H)

KAROONDA MARITANA A093 (H)

KAROONDA MARITANA 225 (H)



BW	200	400	600	MCW	Milk	SS	CWT	EMA	Rib	Rump	RBV%	IMF%
+6.0	+35	+52	+79	+82	+19	+2.3	+48	+2.4	+0.2	+0.7	+0.2	+0.4
85%	80%	80%	78%	68%	57%	78%	67%	54%	58%	63%	55%	56%

INDEX: Southern Self-Replacing +\$72 Northern Self-Replacing +\$51 Southern Baldy Maternal +\$56 Northern Baldy Terminal +\$39

TRAITS OBSERVED: GL,BWT,200WT,400WT(x2),600WT,SS,FAT,EMA,IMF,Genomics **GENETIC CONDITION:** GGPLD,IEF,HYF,DLF,

NOTES: REFERENCE SIRE. Taupo was purchased to introduce some outcross genetics that come from a herd with extra milk. He is extremely long and mobile with a naturally placid temperament.

Mawarra Virginian

(H)



D.O.B.
14/07/2008

Rego No.
HRPD159

Reference Sire

MONREID PRESIDENT (H)

COOTHARABA ELGIN 2 (H)

COOTHARABA PAULINE 147 ET5 (ET) (H)

SIRE: COOTHARABA MAGNUM (H)

MONREID PRESIDENT (H)

COOTHARABA PAULINE 279 (H)

COOTHARABA PAULINE 228 (H)

VENA PARK SHARKA (H)

YALLAROO TORNADO T008 (AI) (H)

YALLAROO AMAZE L048 (H)

DAM: MAWARRA CHERRY RIPE 263 (H)

RVH SILVER 50B 26E (IMP USA) (H)

MAWARRA CHERRY RIPE 206 (AI) (TW) (H)

MAWARRA CHERRY RIPE 152 (H)



BW	200	400	600	MCW	Milk	SS	CWT	EMA	Rib	Rump	RBY%	IMF%
+7.9	+43	+70	+106	+86	+20	+2.3	+62	+4.4	+0.2	+0.5	+1.5	+1.0
97%	96%	97%	97%	93%	96%	97%	91%	84%	88%	90%	86%	90%

INDEX: Southern Self-Replacing +\$118 Northern Self-Replacing +\$90 Southern Baldy Maternal +\$79 Northern Baldy Terminal +\$53

TRAITS OBSERVED: BWT,200WT,400WT,600WT,SS,FAT,EMA,IMF **GENETIC CONDITION:** GGPLD,

NOTES: REFERENCE SIRE. Used lightly as an AI sire at Battalion, Mawarra Virginian has bred some of the better females in our herd. He consistently produces females with superior udder quality.



SUNDERLANDS

CLEANING SUPPLIES

At Sunderlands Cleaning Supplies, we offer a large range of products to cater to anyone's needs. We stock paper products, disposable packaging, cleaning chemicals, animal shampoo, janitorial equipment, Gulf Western oils, cleaning accessories, Bioguard pool chemicals and water testing. We also have a free delivery service throughout north-west NSW.



11B SWANBROOK RD, INVERELL - PH 02 6722 1130

EMAIL- admin@sunderlands.com.au

www.sunderlands.com.au

zoetis

KILL THE CATTLE PARASITES THAT COUNT

Cooperia spp. infections can decrease average daily weight gain by 7.5%¹

Cooperia spp. (Small Intestinal worm) is the most prevalent worm type in Australia.

65%
of worms are
Cooperia
spp.²

Dectomax has broad spectrum efficacy and provides outstanding persistent days of activity on both *Cooperia* spp. and *Ostertagia ostertagi* (one of the most pathogenic worms), as well as other key cattle worms*. Injectable and Pour On available.



Identify the mixture of worm types in your local area:
www.wormtrax.com.au

¹ Kloosterman A, Albers G, van den Brink R. Negative interactions between *Ostertagia ostertagi* and *Cooperia oncophora* in calves. Veterinary Parasitology. Vet Parasitology 1984; 15: 135-150. 2. Australian national average of FEC results from 70,000 dung samples. Wormtrax™ - wormtrax.com.au

*Refer to product label for registered claims.



**AVAILABLE AT YOUR
LOCAL RURAL SUPPLIER**

Zoetis Australia Pty Ltd, ABN 94 156 476 425, Level 6, 5 Rider Boulevard Rhodes, NSW 2138. © 2019 Zoetis Inc. All rights reserved. ZL1080, 03/19



LivestockSolutions Information in your hands

ZOETIS.COM.AU/LS

Battalion Boston N048

(ET)(H)



D.O.B.
20/10/2017

Rego No.
BHEN048

Future Sire

REEDY CREEK DEBONAIR 206 (H)

KAROONDA LINGO (AI) (H)

KAROONDA MINERVA 89 (H)

SIRE: SOUTH BOOROOK BOMBAY (H)

COURALLIE ASCOT (AI) (H)

S BOOROOK BRIDESMAID D34 (AI) (H)

S BOOROOK BRIDESMAID Z18 (H)

COOTHARABA MAGNUM (H)

MAWARRA VIRGINIAN (H)

MAWARRA CHERRY RIPE 263 (H)

DAM: BATTALION CHERRY RIPE 6 (AI) (H)

ONSLow SHARKA T019 (H)

MOORLANDS CHERRY RIPE W155 (H)

MOORLANDS CHERRY RIPE Q028 (H)



BW	200	400	600	MCW	Milk	SS	CWT	EMA	Rib	Rump	RBV%	IMF%
+5.3	+36	+70	+103	+100	+15	+1.2	+65	+3.3	-0.3	-0.2	+1.4	-0.2
64%	62%	62%	64%	57%	50%	61%	56%	47%	50%	54%	48%	50%

INDEX: Southern Self-Replacing +\$145 Northern Self-Replacing +\$125 Southern Baldy Maternal +\$153 Northern Baldy Terminal +\$119

TRAITS OBSERVED: BWT,200WT,400WT,600WT,SS,FAT,EMA,IMF **GENETIC CONDITION:**

NOTES: FUTURE SIRE. Boston was purchased by Dundee Echo Park at our first sale which we have since re purchased a quarter share for use over heifers. He is quickly proving himself too good to be used solely on heifers and will be used across the herd.

Delungra's
Locally Owned Fuel & Convenience Store



NORTH WEST PETROLEUM

For Quotes & Deliveries
Call Brian on 0267 248 484 or 0428 637 091



FARM FUEL DELIVERIES

MECHANICAL REPAIRS

REGO CHECKS

SERVICING

BATTERIES

TYRES

SHELL OILS

GULF WESTERN OILS

VALVOLINE OILS



Fresh Bread ☐ Newspapers ☐ Groceries ☐ Frozen Goods ☐ Farm Produce
BBQ Gas ☐ Bait ☐ Ice ☐ Phone Credit ☐ Cold Drinks

259 BYRON ST, INVERELL NSW 2360 - 02 67210610



OVER 40 YEARS OF SALES & SERVICE TO NORTHERN NSW & AUSTRALIA



Mawarra Unique C041

(AI)(H)



D.O.B.
01/04/2007

Rego No.
HRPC041

Reference Sire

GH MR DIFFERENCE 73J (H)

GH DIFFERENCE BRITISHER 45L (IMP CAN) (H)

FA BRITISHER LADY 59F (H)

SIRE: GH NEON 17N (IMP CAN) (H)

FA BRITISHER 59G (H)

GH SIR SIMBA LASS 107K (H)

FA BRITISHER LADY 138G (H)

KALUDAH MIRACLE (H)

MAWARRA KAHLUA (AI) (H)

MAWARRA MINERVA 298 (AI) (H)

DAM: MAWARRA MINERVA 554 ET1 (AI) (ET) (H)

CHARVEL LAWFUL (H)

MAWARRA MINERVA 357 (H)

MAWARRA MINERVA 259 (H)

CARA PARK
EST. HEREFORDS 1975

BW	200	400	600	MCW	Milk	SS	CWT	EMA	Rib	Rump	RBV%	IMF%
+4.0	+38	+72	+105	+83	+22	+1.2	+81	+7.1	-1.0	-1.0	+3.2	+0.4
98%	96%	95%	95%	90%	91%	95%	88%	81%	83%	86%	81%	83%

INDEX: Southern Self-Replacing +\$191 Northern Self-Replacing +\$171 Southern Baldy Maternal +\$186 Northern Baldy Terminal +\$137

TRAITS OBSERVED: GL,CE,BWT,200WT(x2),400WT,600WT(x2),SS,FAT,EMA,IMF,Genomics **GENETIC CONDITION:** POLL
C-HH,GGPHD,IEF,HYF,DLF,

NOTES: REFERENCE SIRE. Purchased in partnership with Yarram Park at the Wodonga National Hereford Show & Sale in 2009 for \$32,000, after being awarded Grand Champion. C041 has proven to be one of the most significant sires within the industry. His sons from Yarram Park & Cara Park studs are continuing to influence herds throughout Australia.

Glendan Park Knockout K160 (ET)(H)



D.O.B.
25/07/2014

Rego No.
FSAK160

Reference Sire

GLENDAN PARK STORM W134 (H)

BOWMONT STORM B720 (H)

BOWMONT QUEEN Y341 (AI) (TW) (H)

SIRE: WARRINGA GOOGLE G23 (H)

RACOVOLIS TOM THUMB Y555 (H)

WARRINGA FERN D10 (H)

WARRINGA FERN A9 (H)

COOTHARABA ELGIN 2 (H)

COOTHARABA MAGNUM (H)

COOTHARABA PAULINE 279 (H)

DAM: GLENDAN PARK LASS G013 (AI) (H)

RED HILL VALOUR (H)

GLENDAN PARK LASS B107 (H)

MAWARRA LASS 92 (H)

CARA PARK
EST. HEREFORDS 1975

BW	200	400	600	MCW	Milk	SS	CWT	EMA	Rib	Rump	RBV%	IMF%
+8.4	+43	+73	+110	+105	+20	+2.9	+65	+4.9	+0.0	+0.2	+2.0	+0.0
95%	88%	88%	90%	79%	66%	88%	77%	67%	71%	76%	69%	73%

INDEX: Southern Self-Replacing +\$138 Northern Self-Replacing +\$116 Southern Baldy Maternal +\$123 Northern Baldy Terminal +\$85

TRAITS OBSERVED: BWT,200WT(x2),400WT,SS,FAT,EMA,IMF,Genomics **GENETIC CONDITION:** GGPLD,IEF,HYF,DLF,

NOTES: REFERENCE SIRE. Purchased in partnership with Yarram Park at the Wodonga National Hereford Show & Sale in 2016 for \$52,000, after being awarded Junior & Grand Champion. Knockout has developed into an impressive sire exhibiting excellent structure, balance, length & thickness.

Talbalba Advance L131

(H)



D.O.B.
03/10/2015

Rego No.
R5XL131

Reference Sire

INJEMIRA ADVANCE Z080 (AI) (H)

INJEMIRA ADVANCE C085 (H)

INJEMIRA MARINDA Y142 (H)

SIRE: DEVON COURT ADVANCE F052 (H)

GLENDAN PARK STORM W134 (H)

DEVON COURT LIONESS A207 (H)

DEVON COURT LIONESS U376 (H)

COOTHARABA ELGIN 2 (H)

COOTHARABA MAGNUM (H)

COOTHARABA PAULINE 279 (H)

DAM: TALBALBA CHOICE D058 (AI) (H)

TARCOMBE CAPTAIN (H)

TALBALBA CHOICE 77 (AI) (H)

TALBALBA CHOICE 38 (AI) (H)

CARA PARK
EST. HEREFORDS 1975

BW	200	400	600	MCW	Milk	SS	CWT	EMA	Rib	Rump	RBV%	IMF%
+8.9	+36	+58	+92	+95	+16	+0.8	+47	+4.7	-0.3	-0.7	+1.5	+1.4
91%	80%	78%	79%	72%	61%	81%	67%	57%	62%	65%	59%	62%

INDEX: Southern Self-Replacing +\$88 Northern Self-Replacing +\$63 Southern Baldy Maternal +\$78 Northern Baldy Terminal +\$61

TRAITS OBSERVED: CE,BWT,200WT,400WT,SS,FAT,EMA,IMF,Genomics **GENETIC CONDITION:** GGPLD,IEF,HYF,DLF,

NOTES: REFERENCE SIRE. Purchased at the Talbalba On Property Bull Sale in 2017 for \$24,000. He is an attractive well balanced sire with a great structure and muscle pattern.



D.O.B.
14/05/2016

Rego No.
EDRM164

Reference Sire

GH NEON 17N (IMP CAN) (H)

MAWARRA UNIQUE C041 (AI) (H)

MAWARRA MINERVA 554 ET1 (AI) (ET) (H)

SIRE: YARRAM UNIQUE F107 (AI) (H)

YARRAM EXTRA 57U M629 ET1 (AI) (ET) (H)

YARRAM BLESSING A187 (H)

YARRAM BLESSING W291 (H)

CL 1 DOMINO 637S 1ET (H)

CL 1 DOMINO 9121W 1ET (IMP USA) (AI) (ET) (H)

CL 1 DOMINETTE 440P 1ET (H)

DAM: EDR GOLDEN J133 (AI) (H)

YAVENVALE EMPIRE (AI) (H)

EDR GOLDEN C702 (AI) (H)

STRELLEY GOLDEN 2 (H)

CARA PARK
EST. HEREFORDS 1975

BW	200	400	600	MCW	Milk	SS	CWT	EMA	Rib	Rump	RBV%	IMF%
+3.0	+30	+48	+67	+41	+28	+1.5	+51	+6.1	+0.0	-0.1	+1.9	+1.1
94%	87%	86%	89%	78%	57%	87%	75%	65%	70%	75%	66%	72%

INDEX: Southern Self-Replacing +\$135 Northern Self-Replacing +\$118 Southern Baldy Maternal +\$148 Northern Baldy Terminal +\$113

TRAITS OBSERVED: BWT,200WT,400WT,600WT(x2),SS,FAT,EMA,IMF,Genomics **GENETIC CONDITION:** GGPLD,DLF,IEF,HYF,

NOTES: REFERENCE SIRE. Purchased in partnership with Yarram Park at the Wodonga National Hereford Show & Sale in 2018 for \$34,000, after being awarded Intermediate Champion. He is a well balanced structurally correct young sire displaying great depth and thickness of body while retaining a good shoulder.

Campbells Butchery

Open:
Monday - Friday
7am - 5.30pm
Saturday
7am - 12pm



Photo: WR Photography

193 Grey St Glen Innes

Proud supporters of the
Battalion & Cara Park
Bull Sale

HOME DELIVERY

Ph: 02 6732 3047

Attenborough

FERTILISER SERVICES

"Your Local Incitec Pivot key dealer team"

SPECIALISING IN:

- **Plant Nutrition**
Bulk, bagged & blended fertilizer
- **Quality Pasture Seeds**
Annual, biennial & perennial systems
- **Soil Analysis Systems**
Accredited nutrient advantage licence
- **Agonomic Advice**

Armidale Road
(PO Box 138) Glen Innes NSW 2370
Ph: 02 6732 2085 ~ Fax: 02 6732 2851
attenboroughferts@gmail.com



After hours:
David Miller: 02 6732 2085 ~ 0428 659 694
Ben Lockwood: 0421 755 113

Talbalba Emperor P043

(AI)(H)



D.O.B.
16/08/2018

Rego No.
R5XP043

Future Sire

CHURCHILL SENSATION 028X (H)

CHURCHILL A1 ET (IMP USA) (H)

CHURCHILL LADY 6109S ET (H)

SIRE: MAWARRA EMPEROR (AI) (ET) (H)

COOTHARABA MAGNUM (H)

MAWARRA MINERVA 816 (AI) (ET) (H)

MAWARRA MINERVA 554 ET1 (AI) (ET) (H)

INJEMIRA ADVANCE C085 (H)

DEVON COURT ADVANCE F052 (H)

DEVON COURT LIONESS A207 (H)

DAM: TALBALBA CHOICE K47 (H)

BOWMONT STORM C115 (AI) (H)

TALBALBA CHOICE F132 (H)

TALBALBA CHOICE 89 (AI) (H)

CARA PARK
EST. HEREFORDS 1975

BW	200	400	600	MCW	Milk	SS	CWT	EMA	Rib	Rump	RBV%	IMF%
+3.0	+35	+66	+94	+79	+20	+1.2	+69	+4.4	+0.2	+0.2	+1.1	+2.0
73%	69%	68%	69%	64%	53%	77%	63%	54%	60%	63%	54%	61%

INDEX: Southern Self-Replacing +\$156 Northern Self-Replacing +\$138 Southern Baldy Maternal +\$163 Northern Baldy Terminal +\$130

TRAITS OBSERVED: GL,CE,BWT,200WT,400WT,SS,FAT,EMA,IMF,DOC,Genomics **GENETIC CONDITION:** DLF,IEF,HYF,

NOTES: FUTURE SIRE. Purchased in partnership with Yarram Park Performance Genetics at the Talbalba Herefords 2020 bull sale for the top price of \$100,000. Emperor represents the extremely rare combination of exceptional phenotype, performance and carcase data. Very low Birth Weight (39kg), high growth and a great carcase including Intramuscular Fat in the top 2% of the breed. Along with his great structure, outlook, balance and style makes Emperor the complete package.



Est. 1958

- » Regular Cattle Sales
- » Stud Stock Sales
- » Consignment of Stock
- » Rural Property Sales
- » Regular Prime Lamb & Sheep Sales
- » Selling to Feedlots
- » Auctions Plus
- » Market Appraisals

PERSONALISED SERVICE

"Leading by Results"

Licensed Auctioneers - Stock, Station & Real Estate Agents

118 Wentworth St (PO Box 189), Glen Innes. NSW 2370

www.colinsay.com.au

office@colinsay.com.au



Colin Say & Co. Pty Ltd

rma network.

Accredited Member

Steve Daley

0400 406 667

Shad Bailey

0458 322 283

Nathan Purvis

0427 324 078

Craig Thomas

0428 669 500

1**Battalion Black Hawk Q075 (AI)(ET)(H)****D.O.B.**
15/07/2019**Rego No.**
BHEQ075**Account.**
GE & KM Kneipp

KAROONDA LINGO (AI) (H)
 SOUTH BOOROOK BOMBAY (H)
 S BOOROOK BRIDESMAID D34 (AI) (H)

SIRE: BATTALION BLACK HAWK K7 (H)

MAWARRA VIRGINIAN (H)
 BATTALION CHERRY RIPE 6 (AI) (H)
 MOORLANDS CHERRY RIPE W155 (H)
 HAVEN WIZARD (DH) (IMP GBR) (H)
 BOWMONT WIZARD C076 (AI) (H)
 BOWMONT L MINERVA X208 (AI) (H)

DAM: BOWMONT QUEEN F024 (AI) (H)

GLENDAN PARK STORM W134 (H)
 BOWMONT QUEEN C117 (H)
 BOWMONT QUEEN X253 (H)



BW	200	400	600	MCW	Milk	SS	CWT	EMA	Rib	Rump	RBV%	IMF%
+5.9	+32	+61	+88	+83	+14	+1.5	+49	+2.5	+0.1	+0.3	+0.6	-0.1
69%	69%	69%	71%	63%	54%	70%	61%	50%	57%	61%	53%	57%

INDEX: Southern Self-Replacing +\$110 Northern Self-Replacing +\$88 Southern Baldy Maternal +\$108 Northern Baldy Terminal +\$84**TRAITS OBSERVED:** BWT,400WT,600WT,SS,FAT,EMA,IMF,Genomics **GENETIC CONDITION:** IEF,HYF,DLF,

NOTES: The only Black Hawk son in this year's draft. True to type he carries the trademark great butt shape and structural correctness of his sire. This bulls full ET brothers B. Big Mack sold for \$9000 to Collingwood Herefords and B. Black Jack sold for \$15,000 to John & Maree Smith at our 2020 sale

PURCHASER..... PRICE \$..... 33

2

Battalion Tradesman Q065 (H)



D.O.B.
22/03/2019

Rego No.
BHEQ065

Account.
GE & KM Kneipp

PUTE DUSKY D16 (H)

LOCHARBURN GERRY 11004 (IMP NZL) (H)

LOCHARBURN BRYONIA 02124 (H)

SIRE: KAROONDA TAUPO (AI) (H)

WALLAN CREEK HAYMAKER D225 (H)

KAROONDA MARITANA H201 (H)

KAROONDA MARITANA A093 (H)

SOUTH BOOROOK BOMBAY (H)

BATTALION BLACK HAWK K7 (H)

BATTALION CHERRY RIPE 6 (AI) (H)

DAM: BATTALION CONSTANCE M061 (H)

MAWARRA VIRGINIAN (H)

BATTALION CONSTANCE K37 (AI) (ET) (H)

COURALLIE CONSTANCE V086 (H)



BW	200	400	600	MCW	Milk	SS	CWT	EMA	Rib	Rump	RBY%	IMF%
+6.7	+43	+72	+104	+93	+19	+1.7	+68	+4.0	+0.4	+1.0	+1.0	+0.5
66%	64%	65%	66%	58%	48%	63%	56%	45%	52%	56%	48%	51%

INDEX: Southern Self-Replacing +\$146 Northern Self-Replacing +\$125 Southern Baldy Maternal +\$141 Northern Baldy Terminal +\$103

TRAITS OBSERVED: BWT,400WT,600WT,FAT,EMA,IMF,Genomics **GENETIC CONDITION:** IEF,HYF,DLF,

NOTES: The first son of our new sire Karoonda Taupo and a first calf out of a classy larger framed Black Hawk daughter that has our two best females in her pedigree (Cherry Ripe G11 & Constance D311). This bull is Long and deep with extra soft skin and hair. Top 5% for 200, 400 & 600 day weight.

34 **PURCHASER**..... **PRICE \$**.....

3

Battalion Major Q070**(H)**
D.O.B.
 29/06/2019

Rego No.
 BHEQ070

Account.
 GE & KM Kneipp

GH NEON 17N (IMP CAN) (H)
 MAWARRA UNIQUE C041 (AI) (H)
 MAWARRA MINERVA 554 ET1 (AI) (ET) (H)
SIRE: CARA PARK MONARCH M647 (H)
 BOWMONT STORM C093 (H)
 CARA PARK WONDER L H220 (AI) (H)
 CARA PARK WONDER LASS C714 (AI) (H)
 KAROONDA LINGO (AI) (H)
 SOUTH BOOROOK BOMBAY (H)
 S BOOROOK BRIDESMAID D34 (AI) (H)
DAM: BATTALION DELIGHT L47 (H)
 WALLAN CREEK ZEFFER D085 (H)
 SOUTH BOOROOK DELIGHT H26 (AI) (H)
 S BOOROOK DELIGHT W122 (H)



BW	200	400	600	MCW	Milk	SS	CWT	EMA	Rib	Rump	RBV%	IMF%
+6.6	+41	+80	+116	+112	+18	+2.0	+75	+4.5	-1.0	-1.2	+2.1	+0.0
68%	63%	63%	65%	57%	48%	63%	56%	44%	51%	54%	47%	50%

INDEX: Southern Self-Replacing +\$168 Northern Self-Replacing +\$143 Southern Baldy Maternal +\$175 Northern Baldy Terminal +\$135

TRAITS OBSERVED: BWT,600WT,SS,FAT,EMA,IMF,Genomics **GENETIC CONDITION:** IEF,HYF,DLF,

NOTES: The first son of our new sire Cara Park Monarch and we kick them off with one of the larger more powerful bulls this year. Major should breed cattle that grow out with extra frame and carcass. He has just a bit extra in most physical traits, extra length, width, depth and bone resulting in extra weight also scanning by far the largest Eye Muscle Area in the group at 134sqcm back in February. Top 10 % for 200 day weight, top 5% for 400 & 600 day weight.

PURCHASER..... PRICE \$..... 35

4

Battalion Monarch Q072

(H)



D.O.B.
15/06/2019

Rego No.
BHEQ072

Account.
GE & KM Kneipp

GH NEON 17N (IMP CAN) (H)

MAWARRA UNIQUE C041 (AI) (H)

MAWARRA MINERVA 554 ET1 (AI) (ET) (H)

SIRE: CARA PARK MONARCH M647 (H)

BOWMONT STORM C093 (H)

CARA PARK WONDER L H220 (AI) (H)

CARA PARK WONDER LASS C714 (AI) (H)

COOTHARABA MAGNUM (H)

MAWARRA VIRGINIAN (H)

MAWARRA CHERRY RIPE 263 (H)

DAM: BATTALION CONSTANCE K37 (AI) (ET) (H)

PARRAWEENA OCTAGONAL ET (ET) (H)

COURALLIE CONSTANCE V086 (H)

COURALLIE CONSTANCE P456 (H)



BW	200	400	600	MCW	Milk	SS	CWT	EMA	Rib	Rump	RBV%	IMF%
+7.2	+45	+82	+122	+107	+18	+1.9	+83	+5.9	-1.1	-1.0	+2.4	+0.6
70%	64%	66%	69%	60%	54%	72%	59%	48%	54%	58%	50%	54%

INDEX: Southern Self-Replacing +\$185 Northern Self-Replacing +\$159 Southern Baldy Maternal +\$180 Northern Baldy Terminal +\$133

TRAITS OBSERVED: BWT,400WT,600WT,SS,FAT,EMA,IMF,Genomics **GENETIC CONDITION:** IEF,HYF,DLF,

NOTES: A large framed easy moving Cara Park Monarch son, should be ideal for breeding big heavy bullocks. His sire certainly is breeding cattle with a little extra scale whilst also adding extra muscle especially in the Eye Muscle Area. This bulls dam would be one of the better cows in our herd. Top 5% for 200 day weight & EMA & top 1% for 400 & 600 day weight.

36 **PURCHASER:**..... **PRICE \$**.....

5**Battalion Midland Q073****(TW)(H)****D.O.B.****24/06/2019****Rego No.****BHEQ073****Account.****GE & KM Kneipp**

GH NEON 17N (IMP CAN) (H)

MAWARRA UNIQUE C041 (AI) (H)

MAWARRA MINERVA 554 ET1 (AI) (ET) (H)

SIRE: CARA PARK MONARCH M647 (H)

BOWMONT STORM C093 (H)

CARA PARK WONDER L H220 (AI) (H)

CARA PARK WONDER LASS C714 (AI) (H)

ARDNO ZEPPER (H)

WALLAN CREEK ZEPPER D085 (H)

WALLAN CREEK BARONESS T070 (H)

DAM: SOUTH BOOROOK DELIGHT H26 (AI) (H)

S BOOROOK OLUM (H)

S BOOROOK DELIGHT W122 (H)

S BOOROOK DELIGHT N72 (H)



BW	200	400	600	MCW	Milk	SS	CWT	EMA	Rib	Rump	RBV%	IMF%
+7.0	+41	+70	+103	+88	+18	+2.8	+64	+4.2	+0.3	+1.0	+0.7	+0.7
66%	63%	63%	65%	57%	51%	64%	56%	44%	51%	54%	47%	50%

INDEX: Southern Self-Replacing +\$153 Northern Self-Replacing +\$131 Southern Baldy Maternal +\$148 Northern Baldy Terminal +\$110**TRAITS OBSERVED:** BWT,400WT,600WT,SS,FAT,EMA,IMF,Genomics **GENETIC CONDITION:** IEF,HYF,DLF,

NOTES: Midland continues to get better and better, when you look into this bull he is hard to fault. He has a broad flat top line, a real trademark of his sire, plus exceptional width throughout. His dam has proven to be one of the better cows we have purchased. Top 10 % for 200 day weight & top 5% for 400 & 600 day weight.

PURCHASER..... PRICE \$..... 37

6

Battalion Malibu Q076

(H)



D.O.B.
01/09/2019

Rego No.
BHEQ076

Account.
GE & KM Kneipp

GH NEON 17N (IMP CAN) (H)
MAWARRA UNIQUE C041 (AI) (H)
MAWARRA MINERVA 554 ET1 (AI) (ET) (H)
SIRE: CARA PARK MONARCH M647 (H)
BOWMONT STORM C093 (H)
CARA PARK WONDER L H220 (AI) (H)
CARA PARK WONDER LASS C714 (AI) (H)
YAVENVALE HURRICANE (H)
BOWMONT HURRICANE E021 (AI) (H)
BOWMONT L MINERVA C127 (H)
DAM: BOWMONT QUEEN H043 (AI) (H)
BOWMONT STORM C093 (H)
BOWMONT QUEEN F110 (H)
BOWMONT QUEEN C037 (H)



DAM

BW	200	400	600	MCW	Milk	SS	CWT	EMA	Rib	Rump	RBY%	IMF%
+5.3	+39	+76	+107	+94	+21	+3.5	+73	+5.5	-0.5	-0.2	+1.6	+0.9
70%	68%	69%	71%	64%	55%	72%	61%	50%	57%	61%	53%	57%

INDEX: Southern Self-Replacing +\$168 Northern Self-Replacing +\$146 Southern Baldy Maternal +\$163 Northern Baldy Terminal +\$123

TRAITS OBSERVED: BWT,400WT,600WT,SS,FAT,EMA,IMF,Genomics **GENETIC CONDITION:** IEF,HYF,DLF,

NOTES: Malibu is the first in the run of the good younger bulls we have this year. He is long and thick with extra muscle expression and an exceptionally quiet nature. His dam Bowmont Queen H043 is one of the higher IMF females in our herd. Top 15% for milk, top 10% for EMA, top 5% for 400 & 600 day weight

38 **PURCHASER**..... **PRICE \$**.....

7

Battalion Moonshine Q082 (AI)(ET)(H)



D.O.B.
27/10/2019

Rego No.
BHEQ082

Account.
GE & KM Kneipp

GH NEON 17N (IMP CAN) (H)
MAWARRA UNIQUE C041 (AI) (H)
MAWARRA MINERVA 554 ET1 (AI) (ET) (H)
SIRE: CARA PARK MONARCH M647 (H)
BOWMONT STORM C093 (H)
CARA PARK WONDER L H220 (AI) (H)
CARA PARK WONDER LASS C714 (AI) (H)
COOTHARABA MAGNUM (H)
MAWARRA VIRGINIAN (H)
MAWARRA CHERRY RIPE 263 (H)
DAM: BATTALION CHERRY RIPE 6 (AI) (H)
ONSLOW SHARKA T019 (H)
MOORLANDS CHERRY RIPE W155 (H)
MOORLANDS CHERRY RIPE Q028 (H)



DAM

BW	200	400	600	MCW	Milk	SS	CWT	EMA	Rib	Rump	RBV%	IMF%
+7.3	+47	+92	+137	+131	+19	+1.7	+93	+6.4	-1.5	-1.9	+3.0	+0.3
71%	66%	67%	69%	62%	54%	72%	60%	51%	56%	60%	52%	56%

INDEX: Southern Self-Replacing +\$190 Northern Self-Replacing +\$163 Southern Baldy Maternal +\$195 Northern Baldy Terminal +\$151

TRAITS OBSERVED: BWT,400WT,600WT,SS,FAT,EMA,IMF,Genomics **GENETIC CONDITION:** IEF,HYF,DLF,

NOTES: The youngest Battalion bull this year at just 20 mths old. He is the first of 3 ET sons out of the great Cherry Ripe G11. Moonshine will be a standout sire as he matures, a modern bull that is structurally very correct with extra carcass merit and a terrific topline. The EMA in these Monarch sons is exceptional, especially in this pedigree combined with the super donor dam Cherry Ripe G11 who adds extra shape to her progeny. Moonshine is sure to breed consistent high-quality cattle. Top 5% for 200 day weight & EMA, top 1% for 400 & 600 day weight. Full ET brothers are lots 16 and 17.

PURCHASER..... **PRICE \$**..... 39

8

Cara Park Unique Q9028

(H)



D.O.B.
07/08/2019

Rego No.
JENQ9028

Account.
JE Newnham & Co

GH DIFFERENCE BRITISHER 45L (IMP CAN) (H)

GH NEON 17N (IMP CAN) (H)

GH SIR SIMBA LASS 107K (H)

SIRE: MAWARRA UNIQUE C041 (AI) (H)

MAWARRA KAHLUA (AI) (H)

MAWARRA MINERVA 554 ET1 (AI) (ET) (H)

MAWARRA MINERVA 357 (H)

GLENDAN PARK STORM W134 (H)

BOWMONT STORM C093 (H)

BOWMONT MARITANA W168 (AI) (H)

DAM: CARA PARK ALETHEA J305 (AI) (H)

INJEMIRA ADVANCE V093 (H)

CARA PARK ALETHEA C719 (AI) (H)

CARA PARK ALETHEA Y374 (H)

CARA PARK
EST. HEREFORDS 1975



DAM

BW	200	400	600	MCW	Milk	SS	CWT	EMA	Rib	Rump	RBV%	IMF%
+6.7	+44	+80	+121	+106	+20	+1.6	+80	+5.7	-0.8	-0.8	+2.2	+0.6
74%	69%	69%	71%	64%	58%	77%	61%	54%	56%	59%	55%	54%

INDEX: Southern Self-Replacing +\$168 Northern Self-Replacing +\$140 Southern Baldy Maternal +\$157 Northern Baldy Terminal +\$117

TRAITS OBSERVED: BWT,200WT,400WT(x2),600WT,SS,FAT,EMA,IMF **GENETIC CONDITION:**

NOTES: A high performance bull with an exceptional muscle pattern, retaining good length, shoulder and style. Very similar type of bull to J324 our record selling bull in 2015. Moderate Birth Weight with very high growth, well inside the top 1% of the breed on Breedplan. Top 5% Eye Muscle Area. Top 3% Retail Beef Yield. Top 2% Net Feed Intake (Feedlot Finishing). Out of one of the very top cows in our herd.

40 **PURCHASER:**..... **PRICE \$:**.....

9 Cara Park Unique Q9039

(H)



D.O.B.
16/08/2019

Rego No.
JENQ9039

Account.
JE Newnham & Co

GH DIFFERENCE BRITISHER 45L (IMP CAN) (H)

GH NEON 17N (IMP CAN) (H)

GH SIR SIMBA LASS 107K (H)

SIRE: MAWARRA UNIQUE C041 (AI) (H)

MAWARRA KAHLUA (AI) (H)

MAWARRA MINERVA 554 ET1 (AI) (ET) (H)

MAWARRA MINERVA 357 (H)

GLENDAN PARK STORM W134 (H)

BOWMONT STORM C093 (H)

BOWMONT MARITANA W168 (AI) (H)

DAM: CARA PARK ALETHEA K423 (AI) (H)

CARA PARK ADVANCE B631 (AI) (H)

CARA PARK ALETHEA F015 (AI) (H)

CARA PARK ALETHEA Z429 (AI) (H)

CARA PARK
EST. HEREFORDS 1975

BW	200	400	600	MCW	Milk	SS	CWT	EMA	Rib	Rump	RBV%	IMF%
+7.5	+43	+75	+112	+95	+18	+2.7	+72	+5.9	+0.1	+0.6	+1.7	+0.7
74%	69%	69%	71%	64%	57%	77%	61%	54%	56%	59%	55%	54%

INDEX: Southern Self-Replacing +\$146 Northern Self-Replacing +\$121 Southern Baldy Maternal +\$116 Northern Baldy Terminal +\$79

TRAITS OBSERVED: BWT,200WT,400WT(x2),600WT,SS,FAT,EMA,IMF **GENETIC CONDITION:**

NOTES: This bull has extra length & width. He stands wide and square with a terrific hind quarter. Good Breedplan data throughout growth & carcase figures. Top 2% 600 Day Weight, Top 5% Eye Muscle Area, Top 10% Retail Beef Yield, Top 2% Net Feed Intake (Feedlot Finishing). Out of one of the very top cows in our herd.

PURCHASER..... **PRICE \$**..... 41

10

Cara Park Unique Q9035

(H)



D.O.B.
13/08/2019

Rego No.
JENQ9035

Account.
JE Newnham & Co

GH DIFFERENCE BRITISHER 45L (IMP CAN) (H)

GH NEON 17N (IMP CAN) (H)

GH SIR SIMBA LASS 107K (H)

SIRE: MAWARRA UNIQUE C041 (AI) (H)

MAWARRA KAHLUA (AI) (H)

MAWARRA MINERVA 554 ET1 (AI) (ET) (H)

MAWARRA MINERVA 357 (H)

GLENDAN PARK STORM W134 (H)

BOWMONT STORM C093 (H)

BOWMONT MARITANA W168 (AI) (H)

DAM: CARA PARK PEARL J304 (AI) (H)

EMU HOLES PERTH T33 (AI) (H)

CARA PARK PEARL B651 (H)

CARA PARK PEARL T250 (H)

CARA PARK
EST. HEREFORDS 1975

BW	200	400	600	MCW	Milk	SS	CWT	EMA	Rib	Rump	RBV%	IMF%
+5.7	+42	+72	+107	+94	+19	+1.0	+74	+5.4	-1.2	-1.3	+2.6	+0.2
74%	69%	69%	71%	64%	57%	77%	60%	54%	56%	59%	54%	54%

INDEX: Southern Self-Replacing +\$154 Northern Self-Replacing +\$131 Southern Baldy Maternal +\$148 Northern Baldy Terminal +\$111

TRAITS OBSERVED: BWT,200WT,400WT(x2),600WT,SS,FAT,EMA,IMF **GENETIC CONDITION:**

NOTES: Another stylish well structured bull with a great skin. Moderate Birth Weight with high growth. Good Breedplan data across the board. Top 4% of the breed for 600 Day Weight. Top 1% Retail Beef Yield. Top 10% Eye Muscle Area, Top 2% Net Feed Intake (Feedlot Finishing). Out of one of the very top cows in our herd.

42 **PURCHASER**..... **PRICE \$**.....

11

Cara Park Unique Q9029

(H)

D.O.B.
08/08/2019

Rego No.
JENQ9029

Account.
JE Newnham & Co

GH DIFFERENCE BRITISHER 45L (IMP CAN) (H)

GH NEON 17N (IMP CAN) (H)

GH SIR SIMBA LASS 107K (H)

SIRE: MAWARRA UNIQUE C041 (AI) (H)

MAWARRA KAHLUA (AI) (H)

MAWARRA MINERVA 554 ET1 (AI) (ET) (H)

MAWARRA MINERVA 357 (H)

GLENDAN PARK STORM W134 (H)

BOWMONT STORM C093 (H)

BOWMONT MARITANA W168 (AI) (H)

DAM: CARA PARK PEARL J313 (AI) (H)

YAVENVALE FREEDOM (H)

CARA PARK PEARL E979 (H)

CARA PARK PEARL T250 (H)

CARA PARK
EST. HEREFORDS 1975

BW	200	400	600	MCW	Milk	SS	CWT	EMA	Rib	Rump	RBV%	IMF%
+5.9	+42	+77	+114	+102	+18	+1.1	+77	+5.4	-1.3	-1.4	+2.6	+0.0
74%	69%	69%	71%	64%	58%	77%	61%	54%	56%	60%	55%	54%

INDEX: Southern Self-Replacing +\$158 Northern Self-Replacing +\$133 Southern Baldy Maternal +\$152 Northern Baldy Terminal +\$115

TRAITS OBSERVED: BWT,200WT,400WT(x2),600WT,SS,FAT,EMA,IMF **GENETIC CONDITION:**

NOTES: A big mobile, powerful high performance bull with good structure & plenty of capacity. Moderate Birth Weight, very high growth. Top 1% of the breed for 600 Day Weight and Retail Beef Yield. Top 8% Eye Muscle Area. Top 2% Net Feed Intake (Feedlot Finishing). Out of one of the very top cows in our herd.

PURCHASER..... **PRICE \$**..... 43

12

Cara Park Unique Q9016

(H)



D.O.B.
29/07/2019

Rego No.
JENQ9016

Account.
JE Newnham & Co

GH DIFFERENCE BRITISHER 45L (IMP CAN) (H)

GH NEON 17N (IMP CAN) (H)

GH SIR SIMBA LASS 107K (H)

SIRE: MAWARRA UNIQUE C041 (AI) (H)

MAWARRA KAHLUA (AI) (H)

MAWARRA MINERVA 554 ET1 (AI) (ET) (H)

MAWARRA MINERVA 357 (H)

GLENDAN PARK STORM W134 (H)

BOWMONT STORM C093 (H)

BOWMONT MARITANA W168 (AI) (H)

DAM: CARA PARK ALETHEA J301 (AI) (H)

INJEMIRA ADVANCE V093 (H)

CARA PARK ALETHEA E918 (AI) (H)

CARA PARK ALETHEA B619 (AI) (H)

CARA PARK
EST. HEREFORDS 1975

BW	200	400	600	MCW	Milk	SS	CWT	EMA	Rib	Rump	RBV%	IMF%
+9.0	+51	+92	+141	+125	+18	+1.9	+90	+6.1	-0.6	-0.4	+2.3	+0.6
74%	69%	69%	71%	64%	58%	77%	61%	54%	57%	60%	55%	55%

INDEX: Southern Self-Replacing +\$181 Northern Self-Replacing +\$149 Southern Baldy Maternal +\$153 Northern Baldy Terminal +\$107

TRAITS OBSERVED: BWT,200WT,400WT(x2),600WT,SS,FAT,EMA,IMF **GENETIC CONDITION:**

NOTES: A big growthy, free moving well structured bull. The heaviest in our sale draft to date. Very good growth & carcase data. Well inside the top 1% of the breed for 600 Day Weight. Top 2% Retail Beef Yield. Top 4% Eye Muscle Area. Top 2% Net Feed Intake (Feedlot Finishing). Out of one of the very top cows in our herd.

44 **PURCHASER**..... **PRICE \$**.....

13**Cara Park Advance Q9047****(H)**
D.O.B.
 28/08/2019

Rego No.
 JENQ9047

Account.
 JE Newnham & Co

INJEMIRA ADVANCE C085 (H)

DEVON COURT ADVANCE F052 (H)

DEVON COURT LIONESS A207 (H)

SIRE: TALBALBA ADVANCE L131 (H)

COOTHARABA MAGNUM (H)

TALBALBA CHOICE D058 (AI) (H)

TALBALBA CHOICE 77 (AI) (H)

INJEMIRA ADVANCE V093 (H)

CARA PARK ADVANCE B631 (AI) (H)

CARA PARK TREASURE T277 (H)

DAM: CARA PARK PEARL K434 (AI) (H)

MAWARRA UNIQUE C041 (AI) (H)

CARA PARK PEARL G174 (H)

CARA PARK PEARL Z434 (AI) (H)

CARA PARK
 EST. HEREFORDS 1975

BW	200	400	600	MCW	Milk	SS	CWT	EMA	Rib	Rump	RBV%	IMF%
+8.1	+38	+65	+102	+101	+15	+1.5	+57	+4.4	-0.6	-1.0	+1.8	+0.7
73%	66%	65%	68%	58%	44%	75%	53%	45%	48%	52%	46%	45%

INDEX: Southern Self-Replacing +\$119 Northern Self-Replacing +\$94 Southern Baldy Maternal +\$111 Northern Baldy Terminal +\$85

TRAITS OBSERVED: BWT,200WT,400WT(x2),600WT,SS,FAT,EMA,IMF **GENETIC CONDITION:**

NOTES: A stylish well structured bull with great skin and hair. Good carcass, with width and depth throughout. Top 5% of the breed for 600 Day Weight & Retail Beef Yield.

PURCHASER: **PRICE \$:** 45

14

Cara Park Knockout Q9051 (H)

D.O.B.
06/09/2019

Rego No.
JENQ9051

Account.
JE Newnham & Co

BOWMONT STORM B720 (H)

WARRINGA GOOGLE G23 (H)

WARRINGA FERN D10 (H)

SIRE: GLENDAN PARK KNOCKOUT K160 (ET) (H)

COOTHARABA MAGNUM (H)

GLENDAN PARK LASS G013 (AI) (H)

GLENDAN PARK LASS B107 (H)

INJEMIRA ADVANCE V093 (H)

CARA PARK ADVANCE B631 (AI) (H)

CARA PARK TREASURE T277 (H)

DAM: CARA PARK CURLEY K427 (AI) (H)

MAWARRA UNIQUE C041 (AI) (H)

CARA PARK CURLEY G194 (H)

CARA PARK CURLEY W170 (H)

CARA PARK
EST. **HEREFORDS** 1975

BW	200	400	600	MCW	Milk	SS	CWT	EMA	Rib	Rump	RBV%	IMF%
+7.3	+40	+68	+103	+99	+18	+2.0	+60	+3.8	-0.3	-0.4	+1.6	+0.0
74%	67%	67%	70%	61%	46%	76%	56%	48%	51%	55%	49%	49%

INDEX: Southern Self-Replacing +\$129 Northern Self-Replacing +\$105 Southern Baldy Maternal +\$122 Northern Baldy Terminal +\$90

TRAITS OBSERVED: BWT,200WT,400WT(x2),600WT,SS,FAT,EMA,IMF **GENETIC CONDITION:**

NOTES: A bull with great outlook and balance along with a good hind leg and quarter. Top 5% for 600 Day Weight. Top 10% Retail Beef Yield.

46 **PURCHASER:**..... **PRICE \$:**.....

**FOR ALL OF YOUR FARMING, GRAZING AND NURSERY
NEEDS...**

**WILL NEWBERRY 0427 322 287 - JEFF DUDDY 0409 811 950
118 WENTWORTH ST**



SAY & CO RURAL

GLEN INNES, NSW - (02) 6732 2287



regional & agribusiness

more
than
money



**Proud to support
THE BEEF INDUSTRY IN
THE NEW ENGLAND**

Our commitment to The New England extends well beyond banking.
That's why we're proud to support Battalion & Cara Park Bull Sale.

To find out more about how NAB is supporting your community contact:

Daren Wilkinson
Managing Partner
0436910867

Kate Black
Regional & Agri Manager
0407254449

15

Battalion Virginian Q067**(H)**
D.O.B.
 24/05/2019

Rego No.
 BHEQ067

Account.
 GE & KM Kneipp

COOTHARABA ELGIN 2 (H)
 COOTHARABA MAGNUM (H)
 COOTHARABA PAULINE 279 (H)
SIRE: MAWARRA VIRGINIAN (H)
 YALLAROO TORNADO T008 (AI) (H)
 MAWARRA CHERRY RIPE 263 (H)
 MAWARRA CHERRY RIPE 206 (AI) (TW) (H)
 RED HILL IDLE RICH ET (AI) (ET) (H)
 BATTALION ICELAND (H)
 SMITHSTON SILKY Z231 (H)
DAM: BATTALION CONSTANCE 4 (H)
 ECHO PARK WARATAH (AI) (H)
 BATTALION CONSTANCE 42 (H)
 COURALLIE CONSTANCE V086 (H)

**DAM**

BW	200	400	600	MCW	Milk	SS	CWT	EMA	Rib	Rump	RBV%	IMF%
+7.8	+42	+73	+108	+94	+15	+1.4	+62	+3.7	+0.3	+0.8	+1.0	+0.8
73%	69%	69%	72%	64%	63%	69%	62%	53%	58%	61%	55%	59%

INDEX: Southern Self-Replacing +\$150 Northern Self-Replacing +\$126 Southern Baldy Maternal +\$140 Northern Baldy Terminal +\$102

TRAITS OBSERVED: BWT,400WT,600WT,SS,FAT,EMA,IMF,Genomics **GENETIC CONDITION:** IEF,HYF,DLF,

NOTES: This bulls sire Mawarra Virginian has produced some of our best cows and has consistently bred females with great milk and teat placement. B. Virginian Q067 will bred good early maturing vealers and soft easy doing females that should have great milk. Suited to the producer looking to market their calves as weaners or keeping productive easy maintenance replacement females. Top 10 % for 200 day weight, top 5% for 400 & 600 weight.

48 PURCHASER:..... **PRICE \$**.....

16

Battalion Monarch Q077 (AI)(ET)(H)
D.O.B.
 07/09/2019

Rego No.
 BHEQ077

Account.
 GE & KM Kneipp

GH NEON 17N (IMP CAN) (H)
 MAWARRA UNIQUE C041 (AI) (H)
 MAWARRA MINERVA 554 ET1 (AI) (ET) (H)
SIRE: CARA PARK MONARCH M647 (H)
 BOWMONT STORM C093 (H)
 CARA PARK WONDER L H220 (AI) (H)
 CARA PARK WONDER LASS C714 (AI) (H)
 COOTHARABA MAGNUM (H)
 MAWARRA VIRGINIAN (H)
 MAWARRA CHERRY RIPE 263 (H)
DAM: BATTALION CHERRY RIPE 6 (AI) (H)
 ONSLOW SHARKA T019 (H)
 MOORLANDS CHERRY RIPE W155 (H)
 MOORLANDS CHERRY RIPE Q028 (H)



BW	200	400	600	MCW	Milk	SS	CWT	EMA	Rib	Rump	RBV%	IMF%
+5.7	+42	+84	+118	+94	+18	+2.6	+86	+7.0	-0.2	+0.2	+2.3	+0.9
71%	67%	68%	70%	63%	55%	71%	61%	51%	57%	60%	53%	57%

INDEX: Southern Self-Replacing +\$193 Northern Self-Replacing +\$173 Southern Baldy Maternal +\$190 Northern Baldy Terminal +\$141

TRAITS OBSERVED: BWT,400WT,600WT,SS,FAT,EMA,IMF,Genomics **GENETIC CONDITION:** IEF,HYF,DLF,

NOTES: Full ET brother to lot 7 and lot 17. Smooth and even throughout with a great top and butt shape, love the freedom of movement in this bull. With his slick loose skin and structural correctness he would be well suited to handle a warmer QLD climate. Top 10% for 200 day weight, top 1% for 400 & 600 day weight & EMA.

PURCHASER..... PRICE \$..... 49

17**Battalion Memphis Q080 (AI)(ET)(H)****D.O.B.**
25/10/2019**Rego No.**
BHEQ080**Account.**
GE & KM Kneipp

GH NEON 17N (IMP CAN) (H)

MAWARRA UNIQUE C041 (AI) (H)

MAWARRA MINERVA 554 ET1 (AI) (ET) (H)

SIRE: CARA PARK MONARCH M647 (H)

BOWMONT STORM C093 (H)

CARA PARK WONDER L H220 (AI) (H)

CARA PARK WONDER LASS C714 (AI) (H)

COOTHARABA MAGNUM (H)

MAWARRA VIRGINIAN (H)

MAWARRA CHERRY RIPE 263 (H)

DAM: BATTALION CHERRY RIPE 6 (AI) (H)

ONSLow SHARKA T019 (H)

MOORLANDS CHERRY RIPE W155 (H)

MOORLANDS CHERRY RIPE Q028 (H)

**DAM**

BW	200	400	600	MCW	Milk	SS	CWT	EMA	Rib	Rump	RBV%	IMF%
+4.7	+41	+81	+116	+95	+18	+1.3	+83	+5.9	+0.1	+0.7	+1.7	+0.9
71%	67%	68%	70%	62%	55%	72%	61%	51%	56%	60%	52%	56%

INDEX: Southern Self-Replacing +\$182 Northern Self-Replacing +\$161 Southern Baldy Maternal +\$174 Northern Baldy Terminal +\$128**TRAITS OBSERVED:** BWT,400WT,600WT,SS,FAT,EMA,IMF,Genomics **GENETIC CONDITION:** IEF,HYF,DLF,

NOTES: A very young Monarch son here. Plenty of future potential, he is showing all the signs of a young bull that will continue to improve and impress with age. Long and correct with a top-notch pedigree, he will offer great value for money. Full ET brothers Lot 7 and Lot 16. Top 10% for 200 day, top 5 % for EMA & top 1% for 400 & 600 day weight.

50 PURCHASER..... PRICE \$.....

18**Battalion Knockout Q081 (AI)(ET)(H)****D.O.B.**
26/10/2019**Rego No.**
BHEQ081**Account.**
GE & KM Kneipp

BOWMONT STORM B720 (H)
 WARRINGA GOOGLE G23 (H)
 WARRINGA FERN D10 (H)
SIRE: GLENDAN PARK KNOCKOUT K160 (ET) (H)
 COOTHARABA MAGNUM (H)
 GLENDAN PARK LASS G013 (AI) (H)
 GLENDAN PARK LASS B107 (H)
 CL 1 DOMINO 7139T (H)
 CL 1 DOMINO 042X 1ET (IMP USA) (H)
 CL 1 DOMINETTE 5142R (H)
DAM: COURALLIE 042X MONICA J541 (AI) (H)
 YAVENVALE EMPIRE (AI) (H)
 COURALLIE Y207 MONICA C008 (AI) (H)
 BUNDARRA D MONICA Z60 (AI) (H)



BW	200	400	600	MCW	Milk	SS	CWT	EMA	Rib	Rump	RBV%	IMF%
+6.7	+41	+68	+102	+100	+24	+4.1	+62	+4.2	-0.5	-0.9	+2.4	-0.5
71%	66%	66%	69%	60%	52%	71%	58%	48%	54%	58%	50%	55%

INDEX: Southern Self-Replacing +\$145 Northern Self-Replacing +\$124 Southern Baldy Maternal +\$153 Northern Baldy Terminal +\$115**TRAITS OBSERVED:** BWT,400WT,600WT,SS,FAT,EMA,IMF,Genomics **GENETIC CONDITION:** IEF,HYF,DLF,

NOTES: Another very young bull in the draft. Our only Glendan Park Knockout son for this year. His dam was purchased for her superior milk and udder structure. He is naturally very quiet which is consistent with his full brother B. Keystone who sold for \$5000 to Stuart & Janette Hicks in 2019. Top 10% for 200 day & top 5% for 600 day weight, scrotal & milk.

PURCHASER..... **PRICE \$**..... 51

19

Battalion Mojo Q078**(AI)(ET)(H)****D.O.B.**
03/11/2019**Rego No.**
BHEQ078**Account.**
GE & KM Kneipp

MAWARRA UNIQUE C041 (AI) (H)

YARRAM UNIQUE F107 (AI) (H)

YARRAM BLESSING A187 (H)

SIRE: EDR MOJO (H)

CL 1 DOMINO 9121W 1ET (IMP USA) (AI) (ET) (H)

EDR GOLDEN J133 (AI) (H)

EDR GOLDEN C702 (AI) (H)

SMITHSTON WEE DRAM ET1 (AI) (ET) (H)

ECHO PARK WARATAH (AI) (H)

ECHO PARK BETTY 23 (AI) (H)

DAM: BATTALION CONSTANCE 42 (H)

PARRAWEENA OCTAGONAL ET (ET) (H)

COURALLIE CONSTANCE V086 (H)

COURALLIE CONSTANCE P456 (H)



BW	200	400	600	MCW	Milk	SS	CWT	EMA	Rib	Rump	RBV%	IMF%
+4.1	+32	+55	+76	+56	+25	+0.7	+53	+4.7	-0.4	-0.7	+1.7	+0.6
71%	67%	68%	70%	61%	53%	71%	60%	48%	55%	58%	51%	55%

INDEX: Southern Self-Replacing +\$127 Northern Self-Replacing +\$107 Southern Baldy Maternal +\$141 Northern Baldy Terminal +\$108**TRAITS OBSERVED:** BWT,400WT,600WT,SS,FAT,EMA,IMF,Genomics **GENETIC CONDITION:** IEF,HYF,DLF,

NOTES: Our first EDR Mojo son and out of one of our all-time greats in Constance D311 who we lost just this year at 14 years. This young bull has that extra depth that both the sire and dam have. Top 15% for EMA, top 10% for 200 day, top 1% for 400 & 600 day weight.

52 **PURCHASER:**..... **PRICE \$:**.....

20

Battalion Monarch Q074**(H)**
D.O.B.
15/07/2019
Rego No.
BHEQ074
Account.
GE & KM Kneipp

GH NEON 17N (IMP CAN) (H)
 MAWARRA UNIQUE C041 (AI) (H)
 MAWARRA MINERVA 554 ET1 (AI) (ET) (H)
SIRE: CARA PARK MONARCH M647 (H)
 BOWMONT STORM C093 (H)
 CARA PARK WONDER L H220 (AI) (H)
 CARA PARK WONDER LASS C714 (AI) (H)
 SMITHSTON WEE DRAM ET1 (AI) (ET) (H)
 SMITHSTON BONAPARTE (H)
 SMITHSTON CHERRY RIPE V042 (H)
DAM: BATTALION CATH 17 (H)
 CHURCHILL TITANIC ET2 (AI) (ET) (H)
 BATTALION CATH (AI) (H)
 EMU HILLS CATH 31 (H)

**DAM**

BW	200	400	600	MCW	Milk	SS	CWT	EMA	Rib	Rump	RBV%	IMF%
+5.6	+39	+74	+99	+89	+21	+0.4	+72	+5.8	-0.7	-0.5	+2.6	-0.1
71%	64%	66%	69%	59%	52%	72%	57%	45%	51%	55%	47%	51%

INDEX: Southern Self-Replacing +\$146 Northern Self-Replacing +\$128 Southern Baldy Maternal +\$153 Northern Baldy Terminal +\$119

TRAITS OBSERVED: BWT,400WT,600WT,SS,FAT,EMA,IMF,Genomics **GENETIC CONDITION:** IEF,HYF,DLF,

NOTES: The last Cara Park Monarch for this year. A bit of extra bone and length this time. His dam has produced sons to \$15,000 and always weaned one of the heaviest calves each year. Top 5% for 400 day weight & EMA.

PURCHASER..... PRICE \$..... 53

21**Battalion Powerhouse Q066 (H)****D.O.B.**
09/04/2019**Rego No.**
BHEQ066**Account.**
GE & KM Kneipp

KALUDAH MISSION F037 (AI) (H)
 KALUDAH NUGGET J920 (H)
 KALUDAH LASS F118 (H)
SIRE: KALUDAH POWERHOUSE L478 (H)
 RED HILL INSIGHT (H)
 KALUDAH CHLOE B557 (AI) (H)
 KALUDAH CHLOE X884 (H)
 SMITHSTON YOU BEAUT (H)
 BATTALION VAN DIEMEN (ET) (H)
 COURALLIE SPRUCE W144 (AI) (H)
DAM: BATTALION CHERRY RIPE K39 (H)
 ONSLOW SHARKA T019 (H)
 MOORLANDS CHERRY RIPE W155 (H)
 MOORLANDS CHERRY RIPE Q028 (H)

**SIRE OF DAM**

BW	200	400	600	MCW	Milk	SS	CWT	EMA	Rib	Rump	RBY%	IMF%
+6.1	+32	+49	+72	+72	+11	+2.1	+41	+2.3	+0.7	+1.4	+0.7	-0.5
61%	60%	61%	63%	55%	45%	64%	53%	40%	48%	51%	43%	47%

INDEX: Southern Self-Replacing +\$90 Northern Self-Replacing +\$79 Southern Baldy Maternal +\$83 Northern Baldy Terminal +\$59**TRAITS OBSERVED:** BWT,400WT,600WT,SS,FAT,EMA,IMF,Genomics **GENETIC CONDITION:** IEF,HYF,DLF,

NOTES: A different pedigree here. Kaludah Powerhouse was an extremely deep bodied bull with plenty of width who we unfortunately lost in his first season. Great depth of flank appeared to be a dominant attribute in the sire's early progeny.

54 **PURCHASER:**..... **PRICE \$:**.....



LIVESTOCK CARRIERS

ALSO CARRYING

WOOL * HAY * MACHINERY

Locally owned & operated

Daryl has been in business in the local area for **over 50 years**.

He and wife Lyn operate their business from "Lakeside" Glen Innes, where they will continue to serve the local community.

Daryl & Lyn now have a 30ft tabletop with a non-bruise sheep and cattle float.



Ph. (02) 6732 5610

Daryl 0429 342 206 / Lyn 0427 010 916

"Lakeside" Shannon Vale Road, Glen Innes NSW
daryl.lynmeehan@activ8.net.au



KILLARNEY CO-OP.

32-42 Ivy Street, Killarney

07 4664 1188



For all your stockfeed requirements



22

Cara Park Mojo Q9019

(H)



D.O.B.
01/08/2019

Rego No.
JENQ9019

Account.
JE Newnham & Co

MAWARRA UNIQUE C041 (AI) (H)

YARRAM UNIQUE F107 (AI) (H)

YARRAM BLESSING A187 (H)

SIRE: EDR MOJO (H)

CL 1 DOMINO 9121W 1ET (IMP USA) (AI) (ET) (H)

EDR GOLDEN J133 (AI) (H)

EDR GOLDEN C702 (AI) (H)

GLENDAN PARK STORM W134 (H)

BOWMONT STORM C093 (H)

BOWMONT MARITANA W168 (AI) (H)

DAM: CARA PARK CURLEY G108 (AI) (H)

INJEMIRA ADVANCE V093 (H)

CARA PARK CURLEY C706 (AI) (H)

CARA PARK CURLEY Z427 (AI) (H)

CARA PARK
EST. HEREFORDS 1975

BW	200	400	600	MCW	Milk	SS	CWT	EMA	Rib	Rump	RBV%	IMF%
+5.5	+38	+62	+89	+71	+24	+0.8	+58	+4.7	+0.1	+0.3	+1.0	+1.1
74%	68%	68%	71%	62%	47%	77%	58%	50%	54%	58%	51%	52%

INDEX: Southern Self-Replacing +\$124 Northern Self-Replacing +\$100 Southern Baldy Maternal +\$127 Northern Baldy Terminal +\$99

TRAITS OBSERVED: BWT,200WT,400WT(x2),600WT,SS,FAT,EMA,IMF **GENETIC CONDITION:**

NOTES: First of the Mojo's. Good bull with a great hind quarter and width through the lower thigh. Good Breedplan data with his Intramuscular Fat in the top 15% of the breed. Out of a top cow.

PURCHASER:..... **PRICE \$:**..... 57

23***Cara Park Mojo Q9069*****(H)**
D.O.B.
26/09/2019
Rego No.
JENQ9069
Account.
JE Newnham & Co

MAWARRA UNIQUE C041 (AI) (H)

YARRAM UNIQUE F107 (AI) (H)

YARRAM BLESSING A187 (H)

SIRE: EDR MOJO (H)

CL 1 DOMINO 9121W 1ET (IMP USA) (AI) (ET) (H)

EDR GOLDEN J133 (AI) (H)

EDR GOLDEN C702 (AI) (H)

GLENDAN PARK STORM W134 (H)

BOWMONT STORM C093 (H)

BOWMONT MARITANA W168 (AI) (H)

DAM: CARA PARK PEARL G139 (AI) (H)

YARRAM ENERGIZER P241 (AI) (H)

CARA PARK PEARL Z448 (AI) (H)

CARA PARK PEARL R159 (H)

CARA PARK
 EST. HEREFORDS 1975

BW	200	400	600	MCW	Milk	SS	CWT	EMA	Rib	Rump	RBY%	IMF%
+6.0	+37	+64	+94	+79	+21	+1.5	+60	+5.5	-0.3	-0.4	+1.8	+0.9
73%	67%	66%	69%	60%	47%	73%	56%	48%	51%	55%	49%	50%

INDEX: Southern Self-Replacing +\$132 Northern Self-Replacing +\$109 Southern Baldy Maternal +\$126 Northern Baldy Terminal +\$95

TRAITS OBSERVED: BWT,200WT,400WT(x2),600WT,SS,FAT,EMA,IMF **GENETIC CONDITION:**

NOTES: Low Birth Weight . Would be suitable for heifer joining. An attractive bull with plenty of length, ideal skin & hair. Well balanced data set. Top 15% for 600 Day Weight. Top 10% Eye Muscle Area and Retail Beef Yield.

58 PURCHASER..... PRICE \$.....

24 Cara Park Mojo Q9006

(H)



D.O.B.
24/07/2019

Rego No.
JENQ9006

Account.
JE Newnham & Co

MAWARRA UNIQUE C041 (AI) (H)
YARRAM UNIQUE F107 (AI) (H)
YARRAM BLESSING A187 (H)
SIRE: EDR MOJO (H)
CL 1 DOMINO 9121W 1ET (IMP USA) (AI) (ET) (H)

EDR GOLDEN J133 (AI) (H)
EDR GOLDEN C702 (AI) (H)
GLENDAN PARK STORM W134 (H)
BOWMONT STORM C093 (H)
BOWMONT MARITANA W168 (AI) (H)

DAM: CARA PARK CURLEY G132 (AI) (H)
CARA PARK PLAYBOY K672 ET1 (ET) (H)
CARA PARK CURLEY C709 (AI) (H)
CARA PARK CURLEY Z445 (H)

CARA PARK
EST. HEREFORDS 1975

BW	200	400	600	MCW	Milk	SS	CWT	EMA	Rib	Rump	RBV%	IMF%
+3.7	+30	+47	+67	+50	+20	+1.0	+47	+4.7	+0.6	+1.2	+0.6	+1.1
74%	68%	67%	70%	61%	45%	76%	57%	49%	52%	56%	50%	51%

INDEX: Southern Self-Replacing +\$108 Northern Self-Replacing +\$93 Southern Baldy Maternal +\$113 Northern Baldy Terminal +\$87

TRAITS OBSERVED: BWT,200WT,400WT(x2),600WT,SS,FAT,EMA,IMF **GENETIC CONDITION:**

NOTES: Low Birth Weight . Would be suitable for heifer joining. Another attractive well balanced bull with good carcase data. Top 5% for Intramuscular Fat.

PURCHASER..... **PRICE \$**..... 59

25

Cara Park Mojo Q9074

(H)**D.O.B.**
02/10/2019**Rego No.**
JENQ9074**Account.**
JE Newnham & Co

MAWARRA UNIQUE C041 (AI) (H)

YARRAM UNIQUE F107 (AI) (H)

YARRAM BLESSING A187 (H)

SIRE: EDR MOJO (H)

CL 1 DOMINO 9121W 1ET (IMP USA) (AI) (ET) (H)

EDR GOLDEN J133 (AI) (H)

EDR GOLDEN C702 (AI) (H)

GLENDAN PARK STORM W134 (H)

BOWMONT STORM C093 (H)

BOWMONT MARITANA W168 (AI) (H)

DAM: CARA PARK WONDER L H225 (AI) (H)

YAVENVALE FREEDOM (H)

CARA PARK WONDER LASS D857 (H)

CARA PARK WONDER L V038 (H)

CARA PARK
EST. HEREFORDS 1975

BW	200	400	600	MCW	Milk	SS	CWT	EMA	Rib	Rump	RBV%	IMF%
+5.2	+35	+58	+83	+67	+21	+1.2	+54	+4.6	-0.2	-0.1	+1.3	+0.7
73%	67%	66%	69%	60%	46%	73%	56%	48%	51%	55%	49%	50%

INDEX: Southern Self-Replacing +\$116 Northern Self-Replacing +\$96Southern Baldy Maternal +\$115 Northern Baldy Terminal +\$88**TRAITS OBSERVED:** BWT,200WT,400WT(x2),600WT,SS,FAT,EMA,IMF **GENETIC CONDITION:**

NOTES: Low Birth Weight . Would be suitable for heifer joining. Moderately framed with good skin and hair. The youngest bull in our draft. Balanced Breedplan data with Eye Muscle Area in the top 20% of the breed.

60 PURCHASER..... PRICE \$.....

26

Cara Park Knockout Q9012 (H)



D.O.B.
28/07/2019

Rego No.
JENQ9012

Account.
JE Newnham & Co

BOWMONT STORM B720 (H)

WARRINGA GOOGLE G23 (H)

WARRINGA FERN D10 (H)

SIRE: GLENDAN PARK KNOCKOUT K160 (ET) (H)

COOTHARABA MAGNUM (H)

GLENDAN PARK LASS G013 (AI) (H)

GLENDAN PARK LASS B107 (H)

GH NEON 17N (IMP CAN) (H)

MAWARRA UNIQUE C041 (AI) (H)

MAWARRA MINERVA 554 ET1 (AI) (ET) (H)

DAM: CARA PARK PEARL M633 (H)

BOWMONT STORM C093 (H)

CARA PARK PEARL H227 (AI) (H)

CARA PARK PEARL C707 (AI) (H)

CARA PARK
EST. HEREFORDS 1975

BW	200	400	600	MCW	Milk	SS	CWT	EMA	Rib	Rump	RBV%	IMF%
+6.8	+39	+69	+104	+95	+18	+2.2	+66	+5.2	-0.1	+0.1	+1.9	+0.3
71%	66%	65%	64%	56%	47%	58%	53%	44%	48%	52%	46%	49%

INDEX: Southern Self-Replacing +\$141 Northern Self-Replacing +\$119 Southern Baldy Maternal +\$127 Northern Baldy Terminal +\$90

TRAITS OBSERVED: BWT,200WT,400WT(x2),600WT,SS,FAT,EMA,IMF **GENETIC CONDITION:**

NOTES: Extra length of body throughout. Well balanced Breedplan with 600 Day Weight and Retail Beef Yield in the top 5% of the breed and Eye Muscle Area in the top 10%.

PURCHASER..... **PRICE \$**..... .61

27

Cara Park Mojo Q9017

(H)



D.O.B.
30/07/2019

Rego No.
JENQ9017

Account.
JE Newnham & Co

MAWARRA UNIQUE C041 (AI) (H)

YARRAM UNIQUE F107 (AI) (H)

YARRAM BLESSING A187 (H)

SIRE: EDR MOJO (H)

CL 1 DOMINO 9121W 1ET (IMP USA) (AI) (ET) (H)

EDR GOLDEN J133 (AI) (H)

EDR GOLDEN C702 (AI) (H)

RED HILL BLUE BOY (H)

BATTALION BUCKSHOT (AI) (ET) (H)

COURALLIE CONSTANCE V086 (H)

DAM: CARA PARK PEARL M621 (H)

YAVENVALE FREEDOM (H)

CARA PARK PEARL J360 (H)

CARA PARK PEARL C701 (AI) (H)

CARA PARK
EST. HEREFORDS 1975

BW	200	400	600	MCW	Milk	SS	CWT	EMA	Rib	Rump	RBV%	IMF%
+3.7	+28	+43	+61	+50	+18	+2.2	+38	+3.3	-0.3	-0.6	+1.3	+0.3
72%	66%	67%	70%	60%	42%	76%	56%	47%	51%	55%	48%	48%

INDEX: Southern Self-Replacing +\$103 Northern Self-Replacing +\$88 Southern Baldy Maternal +\$112 Northern Baldy Terminal +\$86

TRAITS OBSERVED: BWT,200WT,400WT(x2),600WT,SS,FAT,EMA,IMF **GENETIC CONDITION:**

NOTES: Very low Birth Weight. Would be suitable for heifer joining. A stylish, moderately framed bull with good cosmetics.

62 **PURCHASER:**..... **PRICE \$:**.....

28**Cara Park Advance Q9037****(H)**
D.O.B.
 16/08/2019

Rego No.
 JENQ9037

Account.
 JE Newnham & Co

INJEMIRA ADVANCE C085 (H)

DEVON COURT ADVANCE F052 (H)

DEVON COURT LIONESS A207 (H)

SIRE: TALBALBA ADVANCE L131 (H)

COOTHARABA MAGNUM (H)

TALBALBA CHOICE D058 (AI) (H)

TALBALBA CHOICE 77 (AI) (H)

YAVENVALE FREEDOM (H)

CARA PARK FREEDOM C788 (H)

CARA PARK ALETHEA W114 (H)

DAM: CARA PARK PEARL G157 (H)

INJEMIRA ADVANCE V093 (H)

CARA PARK PEARL C702 (AI) (H)

CARA PARK PEARL Z482 (H)

CARA PARK
 EST. **HEREFORDS** 1975

BW	200	400	600	MCW	Milk	SS	CWT	EMA	Rib	Rump	RBV%	IMF%
+7.5	+34	+55	+84	+82	+14	+1.3	+44	+3.7	+0.0	-0.2	+1.2	+0.7
72%	65%	63%	62%	53%	46%	55%	49%	39%	43%	46%	41%	43%

INDEX: Southern Self-Replacing +\$88 Northern Self-Replacing +\$67 Southern Baldy Maternal +\$78 Northern Baldy Terminal +\$59

TRAITS OBSERVED: BWT,200WT,400WT(x2),600WT,SS,FAT,EMA,IMF **GENETIC CONDITION:**
NOTES: A well structured bull with a good hind leg and quarter.

PURCHASER: **PRICE \$:** 63

29

Cara Park Knockout Q9014 (H)

D.O.B.
28/07/2019

Rego No.
JENQ9014

Account.
JE Newnham & Co

BOWMONT STORM B720 (H)

WARRINGA GOOGLE G23 (H)

WARRINGA FERN D10 (H)

SIRE: GLENDAN PARK KNOCKOUT K160 (ET) (H)

COOTHARABA MAGNUM (H)

GLENDAN PARK LASS G013 (AI) (H)

GLENDAN PARK LASS B107 (H)

INJEMIRA ADVANCE V093 (H)

CARA PARK ADVANCE B631 (AI) (H)

CARA PARK TREASURE T277 (H)

DAM: CARA PARK TREASURE K403 (AI) (H)

MAWARRA UNIQUE C041 (AI) (H)

CARA PARK TREASURE G177 (H)

CARA PARK TREASURE C759 (H)

CARA PARK
EST. HEREFORDS 1975

BW	200	400	600	MCW	Milk	SS	CWT	EMA	Rib	Rump	RBV%	IMF%
+6.2	+37	+63	+91	+83	+17	+1.8	+57	+4.8	+0.0	+0.0	+1.8	+0.3
73%	67%	67%	70%	60%	47%	76%	56%	48%	51%	55%	49%	49%

INDEX: Southern Self-Replacing +\$128 Northern Self-Replacing +\$111 Southern Baldy Maternal +\$123 Northern Baldy Terminal +\$91

TRAITS OBSERVED: BWT,200WT,400WT(x2),600WT,SS,FAT,EMA,IMF **GENETIC CONDITION:**

NOTES: A robust thick set bull. Top 20% for 600 Day Weight. Top 15 % Eye Muscle Area. Top 8% Retail Beef Yield.

64 **PURCHASER:**..... **PRICE \$:**.....

30

Cara Park Mojo Q9001

(H)



D.O.B.
13/07/2019

Rego No.
JENQ9001

Account.
JE Newnham & Co

MAWARRA UNIQUE C041 (AI) (H)

YARRAM UNIQUE F107 (AI) (H)

YARRAM BLESSING A187 (H)

SIRE: EDR MOJO (H)

CL 1 DOMINO 9121W 1ET (IMP USA) (AI) (ET) (H)

EDR GOLDEN J133 (AI) (H)

EDR GOLDEN C702 (AI) (H)

RED HILL BLUE BOY (H)

BATTALION BUCKSHOT (AI) (ET) (H)

COURALLIE CONSTANCE V086 (H)

DAM: CARA PARK TREASURE M655 (H)

INJEMIRA ADVANCE V093 (H)

CARA PARK TREASURE F002 (AI) (H)

CARA PARK TREASURE Y349 (H)

CARA PARK
EST. HEREFORDS 1975

BW	200	400	600	MCW	Milk	SS	CWT	EMA	Rib	Rump	RBV%	IMF%
+2.2	+22	+41	+57	+44	+19	+1.9	+40	+4.3	+0.2	+0.3	+1.3	+0.6
72%	67%	67%	70%	60%	42%	76%	56%	47%	51%	55%	49%	49%

INDEX: Southern Self-Replacing +\$115 Northern Self-Replacing +\$105 Southern Baldy Maternal +\$130 Northern Baldy Terminal +\$101

TRAITS OBSERVED: BWT,200WT,400WT(x2),600WT,SS,FAT,EMA,IMF **GENETIC CONDITION:**

NOTES: Very low Birth Weight. Would be suitable for heifer joining. A moderately framed bull with good cosmetics.

PURCHASER:..... **PRICE \$:**..... .65

INSIGNIA *Company*



GET YOUR
BUSINESS SEEN

[f @insigniacompany](#) [@Insigniacustomcompany](#) www.insigniaco.com.au

**OPTIMISED
BRANDING**

**ORDER
NOW**

**CUSTOM
MERCHANDISE**



67



Thank you

Thank you to all successful purchasers, under bidders and all who attended the sale for your support. Any inspection and consideration of our cattle is much appreciated.

Grant, Kylie, Graeme & Natalie



Purchaser Details

NAME: _____

Trading Name: _____

Address: _____

Phone: _____ Mobile: _____

Email: _____

PIC Number: _____ Bid Card Number: _____

AGENT DETAILS

Company Name: _____

Agent Name: _____

Phone: _____ Mobile: _____

PURCHASE DETAILS

Lots Purchased: _____

Transport Required: Yes ☐ No ☐

Insurance Required: Yes ☐ No ☐

Society Transfer Required: Yes ☐ No ☐

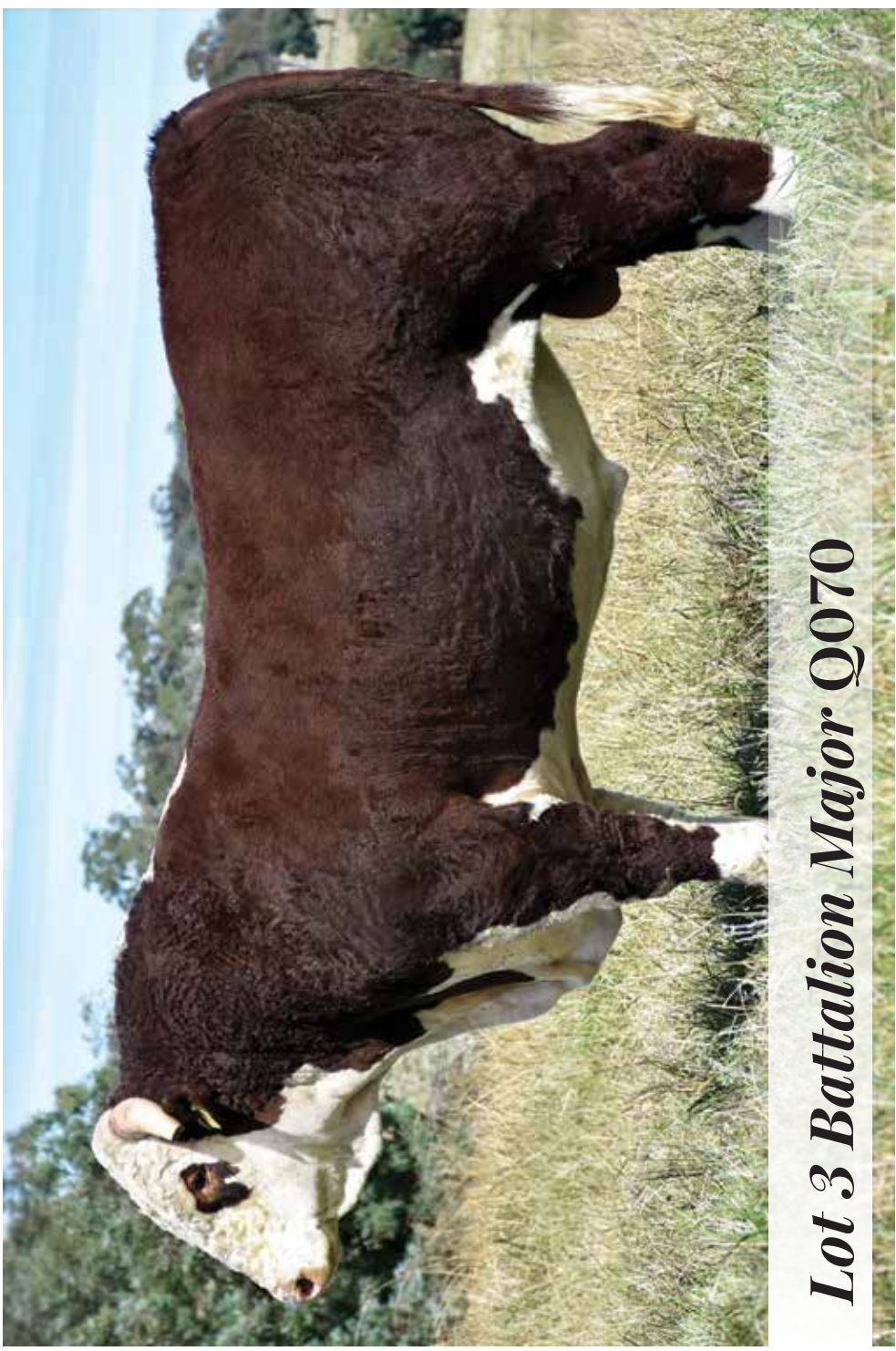
Herd Ident (if applicable): _____

Signature: _____

Date: _____

SECOND ANNUAL SALE JULY 2020





Lot 3 Battalion Major Q070

*"Pleasure in the job puts perfection
in the work" -Aristotle*

