



BATTALION
HEREFORDS

CARA PARK

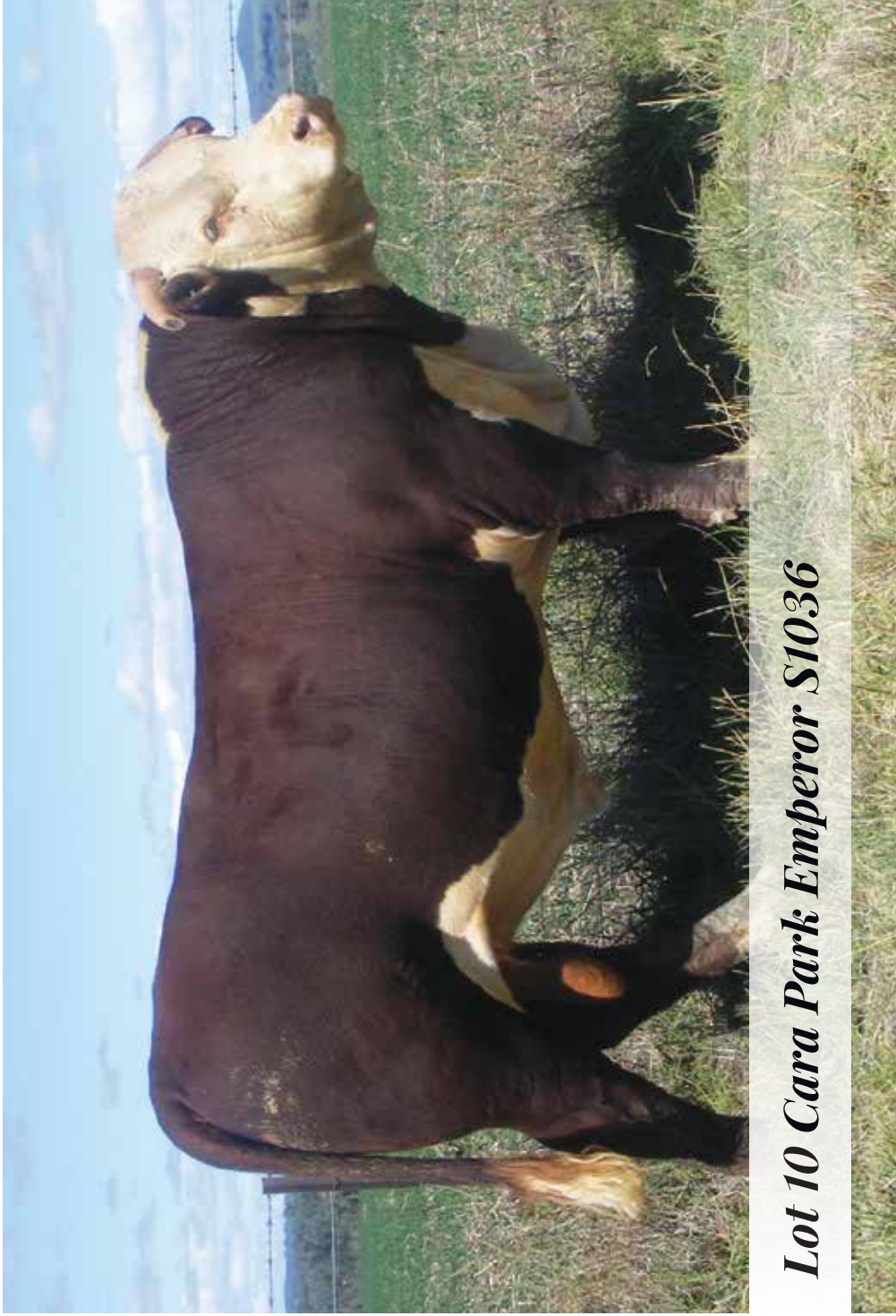
EST. **HEREFORDS** 1975



5th
Annual

Battalion & Cara Park Bull Sale
Mon 3rd July 2023 - 1pm
Glen Innes Showground





Lot 10 Cara Park Emperor S1036

Fifth Annual Battalion & Cara Park Bull Sale

SALE MONDAY 3RD JULY 2023
Sale at 1pm, Inspection from 10am
Offering 41 Hereford Bulls

Complimentary lunch provided



Grant & Kylie Kneipp
T/AS Battalion Livestock
“Wattle Dale”
1259 Nine Mile Road
Dundee NSW 2370

Ph: 02 6734 4134
Mob: 0428 726 771
grant@battalion.com.au
www.battalion.com.au



CARA PARK
EST. **HEREFORDS** 1975

Graeme & Natalie Newnham
T/AS JE Newnham & Co
“Cara”
285 Reserve Creek Road
Myall Creek, Delungra NSW 2403

Ph: 02 6723 6446
Mob: 0428 236 446
g.n.newnham@gmail.com



AUCTIONEER
Paul Dooley
0458 662 646



Colin Say & Co. Pty Ltd

rmanetwork Accredited Member

AGENTS

Nathan Purvis 0427 324 078
Shad Bailey 0458 322 283
Craig Thomas 0428 669 500
Steve Daley 0400 406 667

HOW TO REGISTER with

ELITE LIVESTOCK AUCTIONS



Simply go to www.elitelivestockauctions.com.au using your desktop, laptop, iPad, iPhone or android device.



Click on the **"Sign Up"** page / link



Create a bidding profile using the bidder registration page. *(You can either register as a livestock agent, company or private buyer)*



Agree to the Elite Livestock Auctions Terms & Conditions and the Selling Agents Sale Terms & Conditions as printed in the official Sale Catalogue



Click **"Register"**



You will then be notified by email that an account has been created.



Once an account has been created you are all **"Set to Bid"**



Each Auction can then be viewed by clicking **"Live Auction"** logo on the Elite Livestock Auctions website.



Once you receive email notification that your account has been created please go to the sale you wish to bid at and click **"Request to Bid"**



The sale will then approve your application to bid and on the sale catalogue you will see **"✓ Bid Request Approved"**



On Sale day simply login, click **"Enter Auction"** on the catalogue page and you can start bidding. *(There is no need for software download)*



At the completion of the auction, invoicing will be carried out as per your registration details by the Selling Agents.

Having trouble registering and logging in?

1300 259 742



Elite Livestock Auctions ABN 19604 627 607
Level 19, 123 Eagle Street, Brisbane, QLD 4000

P : 1300 259 742 F : 07 3041 5053
www.elitelivestockauctions.com.au

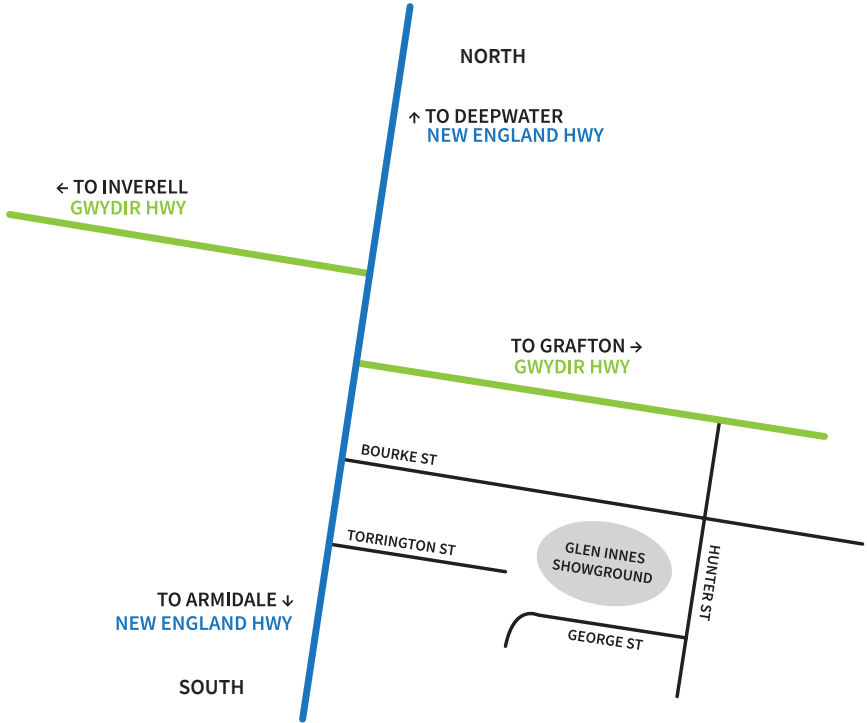
Sale Location:

Glen Innes Showground

Torrington St, Glen Innes NSW 2370

Entry to the showground is by Torrington Street gate

Truck entry via Hunter Street



car entrance off
Torrington Street

truck entrance
off Hunter Street



Sale Information

INSPECTION

Bulls are available for inspection from 10am on sale day. We encourage inspection of both Battalion and Cara Park bulls on property prior to sale day by appointment. This gives you the opportunity to view the bulls in their natural environment and possibly inspect other animals in the pedigree to assist you in making your decision.

Battalion Herefords on property open day: Monday 26th June 2023, 9am to 4pm.

Cara Park on property open days: Monday 26th & Tuesday 27th June, 9am to 4pm.

BUYERS REGISTRATION

The Buyers number system will be in operation. All prospective purchasers are asked to register prior to the sale.

ONLINE & PHONE BIDDING

If you are unable to attend on the day, the sale will be conducted in conjunction with Elite Livestock Auctions. Please refer to page 4 for further information. Phone bidding can be arranged through Colin Say & Co or your preferred agent.

VISITOR SAFETY

All of the sale bulls have been screened for temperament and are a quiet under normal circumstances, however **Visitors enter the cattle pens at their own risk. Children/Prams must not enter the sale pens.**

DISABLED ACCESS

Disabled access is available at the showground and into the stands at the sale yards.

OUTSIDE AGENT REBATE

A rebate of 2% is offered to outside agents who introduce buyers to the selling agent in writing at least 24hrs prior to the sale and settle accounts on the purchaser's behalf within 7 days of the sale

GST: All animals are sold exclusive of GST. GST is added to your invoice.

TRANSPORT

Carriers will be available on sale day. If you wish to bring your own truck, we will accommodate the release of your animal at the completion of the auction. All animals need to be transported from the sale venue by 5pm Tuesday the 4th of July 2023 unless prior arrangements have been made with the vendors. Formal possession, risk and expenses pass to the buyer at the fall of the hammer. We recommend having a quiet animal (e.g. cow, steer etc.) yarded and ready to greet your bull when he arrives home to minimise stress on the bull and help it adjust to its new environment.

INSURANCE

Bulls are a valuable and vulnerable asset to your business. We highly recommend insuring your new purchase at the completion of the sale. Insurance will be available on site.

Please bring your catalogue to the sale



Recommended Accommodation:

Rest Point Motor Inn

72 New England Hwy, Glen Innes NSW 2370

Ph: (02) 6732 2255

www.restpointmotel.com.au

Book direct and mention our sale for best rates

Camp at the Glen Innes Showground

Campers with pets, or travelling with horses are always welcome. Reasonable overnight rates and available for large groups.

The Showground is close to all Glen Innes town facilities, in a quiet off-highway location. It is easy to access with large vehicles and caravans.

www.gleninnesshowground.com

RPG
Rest Point Group

Rest Point Motor Inn
Hereford Steakhouse
Char Grill

The only choice in Glen Innes...

A place to sleep ~ A place to eat ~ A place to meet ~ A place to celebrate

PH: 02 6732 2255

72 New England Hwy
Glen Innes NSW 2370

www.restpointmotel.com.au
info@restpointmotel.com.au



Herd Health

BATTALION – HERD HEALTH

All registered Battalion bulls have been sire verified and tested negative for Pestivirus.

They have received:

- Tick Fever Vaccine 7/7/22
- B12 21/2/23
- Multimin 21/2/23
- Selovin 21/2/23
- Virbamec 21/2/23
- Nilzan 28/3/23
- Demize 3/5/23

Booster Vaccinations Due:

- BEF (3 Day Sickness) Booster Due Feb 2024
- 7 in 1 Booster Due Feb 2024

CARA PARK – HERD HEALTH

All Cara Park bulls have been tested negative for Pestivirus

They have received:

- BEF Vaccine (3 day sickness) / Jan 2023
- 7 in 1 Booster / Mar 2023
- Vibrovax / Apr 2023
- Cydectin Pour-on

Hereford Group Breedplan

The Breedplan values in this catalogue were calculated in the 2021 Hereford Group Breedplan evaluation. Each reported trait shows an EBV (estimated breeding value) and its accuracy level. The EBV provides the current estimate of the bulls genetic merit for that trait, relative to the overall base for the Hereford breed. It indicates how its progeny should perform relative to those of other bulls in the breed. The accuracy of an EBV will be higher for traits with higher heritability and will increase as more performance information on an animal and its relatives become available. The Accuracy of an EBV is reported as a percentage. EBV's with higher accuracy will change less than EBV's of low accuracy when more performance records are analysed.

EBV Percentile table (abbreviated) for Hereford Animals born in 2021

Percentile Band	Weight Traits				Milk	Carcase Traits				
	BW	200	400	600	MILK	EMA	RIB	RUMP	RBY	IMF
Breed	+3.9	+34	+56	+79	+17	+4.0	+0.8	+1.0	+0.8	+0.6
Avg	KG	KG	KG	KG	KG	SQCM	MM	MM	%	%

Performance supplements for beef cattle



Deliver protein and minerals to optimise production

Improving results in beef cattle systems requires year-round nutrition planning. Performance Feeds provides convenient, custom nutrition supplements that optimises available forage, minerals, and protein for herd health and profitability:

Anipro

Liquid Supplements

- Molasses based liquid supplement
- Provides essential protein, minerals and vitamins
- Up to 27% improvement in forage intake
- Fully serviced PCAS approved program saves time and money

WeatherPro

- Waterproof and highly palatable loose lick
- Effectively manage mineral and vitamin deficiencies
- Suits all classes of grazing cattle
- Improve fertility, growth and immunity

Call 1800 300 593
performancefeeds.com.au



PERFORMANCE
FEEDS



Welcome to our 5th Annual Battalion & Cara Park Bull Sale to be held on Monday 3rd July at 1pm EST at the Glen Innes Showgrounds. Inspections from 10am.

We are very pleased with the draft of bulls we have on offer for this year's sale. We continue to focus on selecting breed leading genetics that perform for us and can add financial gain for the commercial and stud breeder.

Elite Livestock Auctions again provide an online bidding platform as an option for those unable to attend the sale. Also, there will be agents available on sale day should you wish to bid via phone.

The bulls have all passed a Bull Breeding Soundness Evaluation by a certified Veterinarian.

We welcome and encourage on farm inspections and are happy to discuss any animals at your convenience.

Looking forward to seeing you either before or at this year's sale.

Grant, Kylie, Graeme & Natalie



www.jamesiesfuelandfix.repcoservice.net

Ph: 02 6732 1171



MVRL35318

All new car Servicing
(Retaining your Statuary Warranty)

Wheel Alignments

Batteries

Child Restraints

Roadworthy Inspections

Brake & Clutch Services

Exhaust Repair & Manufacture

4x4 Exhaust Systems

Campbells Butchery

Open:
Monday - Friday
7am - 5.30pm
Saturday
7am - 12pm



Photo: WR Photography
193 Grey St Glen Innes

**Proud supporters of the
Battalion & Cara Park
Bull Sale**

HOME DELIVERY

Ph: 02 6732 3047



Our History

Four generations of proud Hereford breeders have called our family property home. “Wattle Dale”, 37kms North East of Glen Innes is situated in a cool climate area of the high country in Northern NSW. A location well suited for the production of quality Hereford cattle.

I have been a passionate Hereford breeder since my earliest memories as a child and purchased my first stud female (Emu Hills Cath S724) at the age of 14. In 2006 the Battalion stud was registered and further stud females were purchased from dispersal sales in its early years of establishment. Subsequent females including Moorlands Cherry Ripe W155, Courallie Constance V086, Courallie PR Christian Y312 and Smithston Silky Z231 became just some of the foundation females of the stud and to this day two of those cows have proven to be some of the most influential females within the Battalion herd. Our two most prolific female lines Constance and Cherry Ripe are still producing our top animals each year.

Realising how valuable some of our original females were proving to be, we decided to begin flushing our elite matrons with great results. This has allowed us to dramatically lift our bottom line. No expense was spared in developing our herd with a solid foundation of elite females. Purchasing the best on offer from dispersal sales and then flushing those individuals is the method that has dramatically accelerated our rate of improvement and subsequently been a major factor in delivering our strong sale results in recent years.

My wife Kylie and I now have a full house of cattle enthusiasts. Travis, Grace & Hailey all love cattle as much as we do and there are many debates on which cow is better. More so now than ever our business needs to be successful. Not only are we passionate about producing seedstock, it is our bread and butter. We pride ourselves on our customer service and back our genetics to deliver. We look forward to seeing you at the 5th annual Battalion & Cara Park Bull Sale.

Grant Kneipp



CARA PARK

EST. **HEREFORDS** 1975

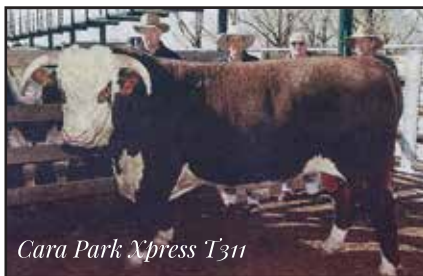
Our History

We have been breeding registered Herefords for 48 years for structural soundness doing ability and on farm performance.

The Cara Park Hereford stud was founded in 1975 with the purchase of a small group of cows & heifers from the famous Bexley stud. These were quickly followed by females from renowned studs such as Windsor, South Caramut, Hillcrest, Thornleigh & Alma Downs.

Windsor Maurice (Grand Champion 1972 Sydney Royal Show), after being retained for use by the Windsor Hereford stud was purchased as a foundation sire. Two years later (during the Beef price slump) in September 1978 we purchased Yarram Boswell at the age of 18 months from Yarram Park. Boswell played an important part in the early development of our stud. We used Boswell for nine joining seasons and sold him as an aged sire for almost double his original purchase price. Over the next few years sires used of note were Invernaion Yukon who sired Cara Park Impact selling at the 1985 Annual Glen Innes Hereford Bull Sale for top price in the unled section to Iolanthe Hereford stud. After securing a quarter share semen rights in Injemira Quest we commenced an annual AI & ET program, Quest left us with a terrific line of females. Also used in our AI program very successfully was Injemira Outback, a son Cara Park Playboy selling for top price at the 1992 Glen Innes Bull Sale to Bundarra Hereford stud.

Since then, over the years we have used the very best genetics available including Yarram Energizer P241 (top price 1996 Wodonga Bull Sale) sire of Cara Park Xpress T311 who sold for a new record price at the Glen Innes Bull Sale in 2000 to Charvel, Yavenvale & Bowmont Hereford Studs. Academy Columbus (Sydney Junior Champion 1993, Senior & Grand Champion 1994). Yarram Pompeii V055 used by AI, with sons selling to Amos Vale, Curracabark & Red Hill studs. Yavenvale Freedom Z008 (top price Yavenvale Annual Sale 2006), sire of Cara Park Freedom C727 selling at the Glen Innes Bull Sale 2009 to Foxforth Hereford Stud. These bulls were followed by two more AI sires in Injemira Advance V093 sire of Cara Park Advance B631 selling at Glen Innes 2008 to Emu Holes Hereford stud. Also, Bowmont Storm C093, he has been one of the most influential sires used in our herd, leaving us with big roomy productive females. Mawarra Unique C041 (Grand Champion Wodonga 2009) sire of Cara Park Unique J324 the record selling bull at



Cara Park Xpress T311



the 2015 Annual Glen Innes Hereford Bull Sale selling to the Ardnore Hereford Stud, J324's dam is by Storm C093. Also by Mawarra Unique C041 out of Storm C093 cows and selling for the second top price at their respective Annual Glen Innes Hereford Bull Sales, 2017 & 2018 was Cara Park Unique L581 selling to Avon View Hereford Stud & Cara Park Monarch M647 to Battalion Hereford Stud. The Unique / Storm cross has proven to be a very successful one, producing progeny with moderate birth weight, high growth and excellent carcass, these traits are major profit drivers for the beef producer. At the 2013 Glen Innes Bull Sale we purchased the top priced bull in Battalion Buckshot G02, from his first crop of calves a son Cara Park Buckshot K490 sold in 2016 for the third top price of that sale to Hylands Hereford Stud.

Sires introduced in recent years are Glendana Park Knockout K160, (Junior & Grand Champion 2016 Wodonga Bull Sale). Talbalba Advance L131 (Top price Horn bull at the 2017 Annual Talbalba Bull sale) has nine very good bulls catalogued for this year's sale. EDR Mojo M164 (Intermediate Champion & second top price at 2018 Wodonga Bull Sale).

In August 2020 we were fortunate to secure a new sire for our breeding program that we believe will advance our herd greatly on many fronts. Talbalba Emperor P043 represents the extremely rare combination of exceptional phenotype, performance, and carcass. We have used Emperor P043 extensively in the past three joining seasons. He has bred to our high expectations, producing a great run of 14 bulls being offered in this year's sale.

Our Hereford cattle are run in conjunction with a merino sheep operation under commercial conditions. We are proud of our cattle and welcome enquiries and on property inspections.

We also look forward to seeing you on sale day

Kind Regards

Graeme, Natalie, Harry, Jack & Jane.



*Run with Deere.
Live the dream.*



**Equipment Sales,
Parts, Service
and field support**

LARGE TRACTORS
GATOR UTILITY VEHICLES
MOWERS
UTILITY TRACTORS
PLANTERS
SLASHERS & IMPLEMENTS



12 Swanbrook Rd Inverell NSW 2360

02 67282800 | RDOequipment.com.au

ENQUIRE TODAY

Battalion Black Hawk K7

(H)



D.O.B.
13/09/2014

Rego No.
BHEK7

Reference Sire

REEDY CREEK DEBONAIR 206 (H)

KAROONDA LINGO (AI) (H)

KAROONDA MINERVA 89 (H)

SIRE: SOUTH BOOROOK BOMBAY (H)

COURALLIE ASCOT (AI) (H)

S BOOROOK BRIDESMAID D34 (AI) (H)

S BOOROOK BRIDESMAID Z18 (H)

COOTHARABA MAGNUM (H)

MAWARRA VIRGINIAN (H)

MAWARRA CHERRY RIPE 263 (H)

DAM: BATTALION CHERRY RIPE 6 (AI) (H)

ONSLow SHARKA T019 (H)

MOORLANDS CHERRY RIPE W155 (H)

MOORLANDS CHERRY RIPE Q028 (H)



BW	200	400	600	MCW	Milk	SS	CWT	EMA	Rib	Rump	RBV%	IMF%
+4.2	+34	+66	+98	+87	+17	+1.7	+71	+5.2	+0.7	+1.6	+1.6	-0.4
95%	94%	94%	95%	87%	79%	93%	86%	77%	79%	83%	77%	81%

INDEX: Southern Self-Replacing +\$167 Northern Self-Replacing +\$155 Southern Baldy Maternal +\$185 Northern Baldy Terminal +\$140

TRAITS OBSERVED: BWT,200WT,400WT,600WT,SS,FAT,EMA,IMF,Genomics

GENETIC CONDITION: HYF,DLF,IEF,IEF,HYF,DLF,GGPLD,

NOTES: REFERENCE SIRE. Sold in 2016 for the record top price of \$45,000 to Franco and Thornleigh Hereford Studs at the Glen Innes Bull Sale. A bull with an exceptional muscle pattern, emphasised by a broad flat top line and plenty of butt shape, an eye-catching sire who has proven to breed consistent draft leading animals at numerous studs. He scanned a raw IMF measurement of 6.5 at 21months of age. His Dam was one of our best and offered superior udder shape.

Courallie Kodiak K592

(AI)(H)



D.O.B.
09/08/2014

Rego No.
HH1K592

Reference Sire

GH NEON 17N (IMP CAN) (H)

MAWARRA UNIQUE C041 (AI) (H)

MAWARRA MINERVA 554 ET1 (AI) (ET) (H)

SIRE: YARRAM UNIQUE F181 (H)

BRAYBOOK UPPERCLASS U504 (AI) (H)

YARRAM FLOSSIE A096 (H)

YARRAM FLOSSIE R065 (AI) (H)

COORA CAMOOWEAL Q081 (AI) (H)

KIWI ZABEST Z3 (IMP NZL) (H)

KIWI LEONORA 101 (H)

DAM: COURALLIE Z3 PRUDENCE F214 (AI) (H)

COURALLIE YARRAM A230 (AI) (H)

COURALLIE A230 PRUDENCE C095 (H)

COURALLIE U105 PRUDENCE X169 (H)



BW	200	400	600	MCW	Milk	SS	CWT	EMA	Rib	Rump	RBV%	IMF%
+5.1	+34	+62	+93	+104	+17	+1.0	+60	+3.8	-0.8	-0.8	+1.4	-0.1
89%	83%	82%	85%	77%	62%	88%	73%	67%	69%	73%	66%	68%

INDEX: Southern Self-Replacing +\$128 Northern Self-Replacing +\$109 Southern Baldy Maternal +\$144 Northern Baldy Terminal +\$114

TRAITS OBSERVED: GL,CE,BWT,200WT,400WT,600WT,SS,FAT,EMA,IMF,Genomics **GENETIC CONDITION:** IEF,HYF,DLF,GGPHD,

NOTES: REFERENCE SIRE. Kodiak was purchased in partnership with Dundee Echp Park. He would be the deepest bodied bull we have used and breeds extra milk into his daughters.

Karoonda Taupo

(AI) (H)



D.O.B.
11/03/2016

Rego No.
SKSM336

Reference Sire

PUTE WAQAR (H)

PUTE DUSKY D16 (H)

PUTE BABS 106 (H)

SIRE: LOCHARBURN GERRY 11004 (IMP NZL) (H)

LOCHARBURN HIGH VOLTAGE 0055 (H)

LOCHARBURN BRYONIA 02124 (H)

LOCHARBURN BRYONIA S10 (H)

CHARNOCK HAYMAKER (H)

WALLAN CREEK HAYMAKER D225 (H)

WALLAN CREEK NECKLET W126 (H)

DAM: KAROONDA MARITANA H201 (H)

COOTHARABA INDUS 2 (H)

KAROONDA MARITANA A093 (H)

KAROONDA MARITANA 225 (H)



BW	200	400	600	MCW	Milk	SS	CWT	EMA	Rib	Rump	RBV%	IMF%
+5.7	+32	+48	+73	+82	+15	+2.3	+45	+2.3	+0.7	+1.2	-0.4	+0.8
87%	81%	81%	80%	71%	64%	81%	68%	57%	59%	64%	56%	58%

INDEX: Southern Self-Replacing +\$62 Northern Self-Replacing +\$43 Southern Baldy Maternal +\$42 Northern Baldy Terminal +\$31

TRAITS OBSERVED: GL,BWT,200WT,400WT(x2),600WT,SS,FAT,EMA,IMF,Genomics **GENETIC CONDITION:** IEF,HYF,DLF,GGPLD,

NOTES: REFERENCE SIRE. Taupo was purchased to introduce some outcross genetics that come from a herd with extra milk. He is extremely long and mobile with a naturally placid temperament.

Cara Park Monarch M647

(H)



D.O.B.
12/07/2016

Rego No.
JENM647

Reference Sire

GH DIFFERENCE BRITISHER 45L (IMP CAN) (H)

GH NEON 17N (IMP CAN) (H)

GH SIR SIMBA LASS 107K (H)

SIRE: MAWARRA UNIQUE C041 (AI) (H)

MAWARRA KAHLUA (AI) (H)

MAWARRA MINERVA 554 ET1 (AI) (ET) (H)

MAWARRA MINERVA 357 (H)

GLENDAN PARK STORM W134 (H)

BOWMONT STORM C093 (H)

BOWMONT MARITANA W168 (AI) (H)

DAM: CARA PARK WONDER L H220 (AI) (H)

CARA PARK PLAYBOY K672 ET1 (ET) (H)

CARA PARK WONDER LASS C714 (AI) (H)

CARA PARK WONDER L Z424 (H)



BW	200	400	600	MCW	Milk	SS	CWT	EMA	Rib	Rump	RBV%	IMF%
+5.2	+42	+78	+109	+91	+19	+2.0	+84	+7.5	-0.9	-0.6	+3.0	+0.7
85%	78%	79%	81%	73%	62%	84%	69%	62%	64%	67%	62%	63%

INDEX: Southern Self-Replacing +\$183 Northern Self-Replacing +\$167 Southern Baldy Maternal +\$181 Northern Baldy Terminal +\$137

TRAITS OBSERVED: BWT,200WT,400WT,600WT,SS,FAT,EMA,IMF,Genomics

GENETIC CONDITION: HYF,IEF,DLF,GGPLD,POLL C-HH,

NOTES: REFERENCE SIRE. Monarch was purchased for \$16,000 by Battalion Herefords in 2018. We selected him for his overall power and performance with the addition of perfect feet. He breeds curve bending growth with extremely good carcass merit. His progeny have been highly sought after by stud and commercial breeders, siring last years top price bull and the highest average for the sires represented.

Battalion Blackjack P058 (AI)(ET)(H)



D.O.B.
02/08/2018

Rego No.
BHEP058

Reference Sire

KAROONDA LINGO (AI) (H)
SOUTH BOOROOK BOMBAY (H)
S BOOROOK BRIDESMAID D34 (AI) (H)

SIRE: BATTALION BLACK HAWK K7 (H)

MAWARRA VIRGINIAN (H)
BATTALION CHERRY RIPE 6 (AI) (H)
MOORLANDS CHERRY RIPE W155 (H)
HAVEN WIZARD (DH) (IMP GBR) (H)
BOWMONT WIZARD C076 (AI) (H)
BOWMONT L MINERVA X208 (AI) (H)

DAM: BOWMONT QUEEN F024 (AI) (H)

GLENDAN PARK STORM W134 (H)
BOWMONT QUEEN C117 (H)
BOWMONT QUEEN X253 (H)



BW	200	400	600	MCW	Milk	SS	CWT	EMA	Rib	Rump	RBV%	IMF%
+5.9	+37	+65	+92	+77	+13	+1.9	+59	+3.8	+0.6	+1.0	+0.4	+0.1
73%	71%	71%	73%	65%	56%	75%	61%	53%	57%	61%	54%	58%

INDEX: Southern Self-Replacing +\$137 Northern Self-Replacing +\$118 Southern Baldy Maternal +\$138 Northern Baldy Terminal +\$101

TRAITS OBSERVED: BWT,200WT,600WT,SS,FAT,EMA,IMF,Genomics **GENETIC CONDITION:** HYF,IEF,DLF,GGPLD,

NOTES: REFERENCE SIRE. BlackJack P058 had great structure and mobility with a broad top and terrific butt shape plus a beautiful skin and hair type.

Battalion Boston N048

(ET)(H)



D.O.B.
20/10/2017

Rego No.
BHEN048

Reference Sire

REEDY CREEK DEBONAIR 206 (H)

KAROONDA LINGO (AI) (H)

KAROONDA MINERVA 89 (H)

SIRE: SOUTH BOOROOK BOMBAY (H)

COURALLIE ASCOT (AI) (H)

S BOOROOK BRIDESMAID D34 (AI) (H)

S BOOROOK BRIDESMAID Z18 (H)

COOTHARABA MAGNUM (H)

MAWARRA VIRGINIAN (H)

MAWARRA CHERRY RIPE 263 (H)

DAM: BATTALION CHERRY RIPE 6 (AI) (H)

ONSLow SHARKA T019 (H)

MOORLANDS CHERRY RIPE W155 (H)

MOORLANDS CHERRY RIPE Q028 (H)



BW	200	400	600	MCW	Milk	SS	CWT	EMA	Rib	Rump	RBV%	IMF%
+5.1	+35	+63	+97	+95	+10	+0.6	+61	+2.1	+0.1	+0.8	+0.7	-0.4
76%	73%	74%	77%	68%	55%	78%	66%	58%	61%	65%	57%	59%

INDEX: Southern Self-Replacing +\$139 Northern Self-Replacing +\$123 Southern Baldy Maternal +\$150 Northern Baldy Terminal +\$113

TRAITS OBSERVED: BWT,200WT,400WT,600WT,SS,FAT,EMA,IMF,Genomics **GENETIC CONDITION:** DLF,HYF,IEF,

NOTES: REFERENCE SIRE. Boston is our resident heifer bull that breeds low birth weight calves that grow well and develop plenty of shape as they mature.

Bowmont Dom Lad G085

(AI)(H)



D.O.B.
12/03/2011

Rego No.
GRKG085

Reference Sire

BAR-OM 656 STD COMM LAD 256B (H)

STR STANDARD 256B DOM LAD 68L (H)

STR 27Z STANDARD DOMINO 46C (H)

SIRE: STANDARD 68L DOM LAD 38T (IMP CAN) (H)

STANDARD 16E RIBSTONE 64H (H)

K 64H RIBSTONE LADY 112N (H)

K 45D SUPER LADY 19H (H)

VENA PARK SHARKA (H)

ALKIRA VIKING (AI) (H)

COURALLIE MARIANNE R349 (H)

DAM: BOWMONT MARITANA Z486 (AI) (H)

BOWMONT QUEST P424 (AI) (H)

BOWMONT MARITANA 331 (H)

BOWMONT MARITANA 261 (AI) (H)



BW	200	400	600	MCW	Milk	SS	CWT	EMA	Rib	Rump	RBV%	IMF%
+7.6	+33	+54	+83	+51	+13	+2.4	+48	+5.3	+0.6	+0.7	+1.0	+2.5
96%	94%	94%	95%	87%	87%	92%	84%	74%	79%	84%	77%	82%

INDEX: Southern Self-Replacing +\$158 Northern Self-Replacing +\$135 Southern Baldy Maternal +\$136 Northern Baldy Terminal +\$84

TRAITS OBSERVED: 200WT,400WT,600WT,SS,FAT,EMA,IMF,Genomics

GENETIC CONDITION: IEF,HYF,DLF,GGPHD,GGPLD,POLL C-HH,

NOTES: REFERENCE SIRE. Dom Lad G085 was used as an outcross AI sire, with great carcase attributes and high IMF.

Talbalba Advance L131

(H)



D.O.B.
03/10/2015

Rego No.
R5XL131

Reference Sire

INJEMIRA ADVANCE Z080 (AI) (H)

INJEMIRA ADVANCE C085 (H)

INJEMIRA MARINDA Y142 (H)

SIRE: DEVON COURT ADVANCE F052 (H)

GLENDAN PARK STORM W134 (H)

DEVON COURT LIONESS A207 (H)

DEVON COURT LIONESS U376 (H)

COOTHARABA ELGIN 2 (H)

COOTHARABA MAGNUM (H)

COOTHARABA PAULINE 279 (H)

DAM: TALBALBA CHOICE D058 (AI) (H)

TARCOMBE CAPTAIN (H)

TALBALBA CHOICE 77 (AI) (H)

TALBALBA CHOICE 38 (AI) (H)

CARA PARK
EST. **HEREFORDS** 1975

BW	200	400	600	MCW	Milk	SS	CWT	EMA	Rib	Rump	RBV%	IMF%
+9.2	+39	+61	+100	+109	+16	+1.2	+53	+4.9	-0.7	-1.2	+1.8	+1.3
94%	86%	87%	88%	78%	64%	86%	75%	63%	66%	70%	64%	65%

INDEX: Southern Self-Replacing +\$95 Northern Self-Replacing +\$70 Southern Baldy Maternal +\$83 Northern Baldy Terminal +\$65

TRAITS OBSERVED: CE,BWT,200WT,400WT,SS,FAT,EMA,IMF,Genomics **GENETIC CONDITION:** IEF,HYF,DLF,GGPLD,

NOTES: REFERENCE SIRE. Purchased at the Talbalba On Property Bull Sale in 2017 for \$24,000. He is an attractive well balanced sire with a great structure and muscle pattern. He is breeding exceptionally well, producing our top price bull at last years sale selling for \$26,000 to John and Maree Smith of Woodenbong.

Talbalba Emperor P043

(AI)(H)



D.O.B.
16/08/2018

Rego No.
R5XP043

Reference Sire

CHURCHILL SENSATION 028X (H)

CHURCHILL A1 ET (IMP USA) (H)

CHURCHILL LADY 6109S ET (H)

SIRE: MAWARRA EMPEROR (AI) (ET) (H)

COOTHARABA MAGNUM (H)

MAWARRA MINERVA 816 (AI) (ET) (H)

MAWARRA MINERVA 554 ET1 (AI) (ET) (H)

INJEMIRA ADVANCE C085 (H)

DEVON COURT ADVANCE F052 (H)

DEVON COURT LIONESS A207 (H)

DAM: TALBALBA CHOICE K47 (H)

BOWMONT STORM C115 (AI) (H)

TALBALBA CHOICE F132 (H)

TALBALBA CHOICE 89 (AI) (H)

CARA PARK
EST. HEREFORDS 1975

BW	200	400	600	MCW	Milk	SS	CWT	EMA	Rib	Rump	RBV%	IMF%
+2.7	+36	+66	+96	+83	+20	+1.2	+69	+4.6	-0.5	-0.9	+1.9	+1.6
93%	87%	82%	84%	74%	59%	83%	72%	61%	66%	69%	62%	68%

INDEX: Southern Self-Replacing +\$165 Northern Self-Replacing +\$148 Southern Baldy Maternal +\$179 Northern Baldy Terminal +\$144

TRAITS OBSERVED: GL,CE,BWT,200WT,400WT,SS,FAT,EMA,IMF,DOC,Genomics **GENETIC CONDITION:** HYF,IEF,DLF,

NOTES: REFERENCE SIRE. Purchased in partnership with Yarram Park Performance Genetics at the Talbalba Herefords 2020 bull sale for the top price of \$100,000. Emperor represents the extremely rare combination of exceptional phenotype, performance and carcass data. Very low Birth Weight (39kg), high growth and great carcass including Intramuscular Fat in the top 2% of the breed. We have used Emperor extensively in the past three joining seasons. He has bred to our high expectations, breeding these positive traits consistently into his progeny, producing a great run of bulls being offered in this years sale.



Farm Insurance

Specialist agricultural insurer, Achmea Australia, supports the Battalion & Cara Park Bull Sale



“Contact me directly to insure your bulls with Achmea Australia.”

ROBERT BUTLER, Farm Insurance Specialist
0448 108 867 | robert.butler@achmea.com.au
www.achmea.com.au

Insurance issued by Achmea Schadeverzekeringen N.V. (Achmea) ABN 86 158 237 702 AFSL 433984. The information in this advertisement or article is general advice only and does not take into account your individual objectives, financial situation or needs (your personal circumstances). Before using this information to decide whether to purchase the insurance policy, you should consider your personal circumstances and the relevant Policy Wording available from the 'Downloads' section of our website www.achmea.com.au.

07003



PERSONALISED SERVICE LEADING BY RESULTS

- Est. 1958
- »Regular Cattle Sales
- »Regular Prime Lamb & Sheep Sales
- »Stud Stock Sales
- »Selling to Feedlots
- »Consignment of Stock
- »Market Appraisals
- »Auctions Plus
- »Rural Property Sales

Colin Say & Co Pty Ltd. Licensed Auctioneers - Stock, Station & Real Estate Agents
118 Wentworth Street Glen Innes NSW 2370
(02) 6732 1266 www.colinsay.com.au office@colinsay.com.au

Steve Daley 0400 406 667
Craig Thomas 0428 669 500

Shad Bailey 0458 322 283
Nathan Purvis 0427 324 078



1

Battalion Bartlett S094

(H)

D.O.B.
24/03/2021

Rego No.
BHES094

Account.
Battalion Livestock

PURCHASER **PRICE \$**

KAROONDA LINGO (AI) (H)

SOUTH BOOROOK BOMBAY (H)

S BOOROOK BRIDESMAID D34 (AI) (H)

SIRE: BATTALION BOSTON N048 (ET) (H)

MAWARRA VIRGINIAN (H)

BATTALION CHERRY RIPE 6 (AI) (H)

MOORLANDS CHERRY RIPE W155 (H)

SOUTH BOOROOK BOMBAY (H)

BATTALION BLACK HAWK K7 (H)

BATTALION CHERRY RIPE 6 (AI) (H)

DAM: BATTALION PEARL 080 (AI) (H)

GLENDAN PARK EMPIRE E002 (AI) (ET) (H)

BATTALION PEARL M056 (ET) (H)

INJEMIRA PEARL F137 (H)



GRAND DAM

BW	200	400	600	MCW	Milk	SS	CWT	EMA	Rib	Rump	RBV%	IMF%
+4.8	+36	+62	+97	+96	+15	+0.3	+63	+3.5	-0.3	+0.2	+1.6	-0.5
66%	65%	64%	66%	57%	47%	72%	54%	47%	51%	54%	46%	51%

INDEX: Southern Self-Replacing +\$130 Northern Self-Replacing +\$113 Southern Baldy Maternal +\$140 Northern Baldy Terminal +\$108

TRAITS OBSERVED: BWT,600WT,SS,FAT,EMA,IMF,Genomics

NOTES: A low-birth-weight bull that has grown into a large heavy weight, carcase improving sire with ample muscle expression. He has an exceptionally strong top line and extra butt shape.

2

Battalion Dynamite R092 (AI)(ET)(H)



D.O.B.
19/12/2020

Rego No.
BHER092

Account.
Battalion Livestock

PURCHASER **PRICE \$**

STR STANDARD 256B DOM LAD 68L (H)

STANDARD 68L DOM LAD 38T (IMP CAN) (H)

K 64H RIBSTONE LADY 112N (H)

SIRE: BOWMONT DOM LAD G085 (AI) (H)

ALKIRA VIKING (AI) (H)

BOWMONT MARITANA Z486 (AI) (H)

BOWMONT MARITANA 331 (H)

COOTHARABA MAGNUM (H)

MAWARRA VIRGINIAN (H)

MAWARRA CHERRY RIPE 263 (H)

DAM: BATTALION CHERRY RIPE 6 (AI) (H)

ONSLow SHARKA T019 (H)

MOORLANDS CHERRY RIPE W155 (H)

MOORLANDS CHERRY RIPE Q028 (H)



BW	200	400	600	MCW	Milk	SS	CWT	EMA	Rib	Rump	RBV%	IMF%
+5.8	+35	+61	+94	+65	+17	+1.5	+62	+5.3	+0.8	+1.4	+1.1	+1.4
72%	70%	70%	71%	64%	61%	71%	61%	54%	58%	61%	54%	59%

INDEX: Southern Self-Replacing +\$158 Northern Self-Replacing +\$137 Southern Baldy Maternal +\$148 Northern Baldy Terminal +\$99

TRAITS OBSERVED: 400WT,600WT,SS,FAT,EMA,IMF,Genomics

NOTES: Dynamite R092 has been one of our top prospects since birth. He is extremely long with great width through the backend. He combines a very strong maternal line (B. Cherry Rippe G11) with a sire known for having extra IMF. Dynamite ticks a lot of boxes in the flesh and on paper and ranks in the top 15% for both IMF and EMA.

3

Battalion Mascot S103

(H)

D.O.B.
10/06/2021

Rego No.
BHES103

Account.
Battalion Livestock

PURCHASER **PRICE \$**

GH NEON 17N (IMP CAN) (H)

MAWARRA UNIQUE C041 (AI) (H)

MAWARRA MINERVA 554 ET1 (AI) (ET) (H)

SIRE: CARA PARK MONARCH M647 (H)

BOWMONT STORM C093 (H)

CARA PARK WONDER L H220 (AI) (H)

CARA PARK WONDER LASS C714 (AI) (H)

ARDNO ZEFFER (H)

WALLAN CREEK ZEFFER D085 (H)

WALLAN CREEK BARONESS T070 (H)

DAM: SOUTH BOOROOK DELIGHT H26 (AI) (H)

S BOOROOK OLUM (H)

S BOOROOK DELIGHT W122 (H)

S BOOROOK DELIGHT N72 (H)



BW	200	400	600	MCW	Milk	SS	CWT	EMA	Rib	Rump	RBV%	IMF%
+5.3	+36	+59	+81	+73	+14	+2.9	+54	+4.2	+0.5	+1.5	+0.4	+0.7
71%	64%	65%	69%	59%	50%	72%	56%	47%	50%	53%	47%	49%

INDEX: Southern Self-Replacing +\$130 Northern Self-Replacing +\$119 Southern Baldy Maternal +\$130 Northern Baldy Terminal +\$100

TRAITS OBSERVED: BWT,600WT,SS,FAT,EMA,IMF,Genomics

NOTES: Mascot is the bull in the draft that continues to find another gear. He was moderate at birth but has really hit his straps and grown into a big classy top sire prospect. Another quality Cara Park Monarch son out of one of the better cows in our herd in the South Boorook Delight H26.

4

Battalion Tahoe S097

(H)**D.O.B.**
04/04/2021**Rego No.**
BHES097**Account.**
Battalion Livestock**PURCHASER** **PRICE \$**

PUTE DUSKY D16 (H)

LOCHARBURN GERRY 11004 (IMP NZL) (H)

LOCHARBURN BRYONIA 02124 (H)

SIRE: KAROONDA TAUPO (AI) (H)

WALLAN CREEK HAYMAKER D225 (H)

KAROONDA MARITANA H201 (H)

KAROONDA MARITANA A093 (H)

SOUTH BOOROOK BOMBAY (H)

BATTALION BLACK HAWK K7 (H)

BATTALION CHERRY RIPE 6 (AI) (H)

DAM: BATTALION CONSTANCE N066 (AI) (H)

BATTALION ICELAND (H)

BATTALION CONSTANCE 4 (H)

BATTALION CONSTANCE 42 (H)



BW	200	400	600	MCW	Milk	SS	CWT	EMA	Rib	Rump	RBV%	IMF%
+7.7	+39	+59	+93	+105	+18	+2.7	+56	+3.5	-0.3	-0.2	+0.8	+0.2
70%	64%	63%	67%	57%	47%	70%	54%	45%	47%	51%	45%	47%

INDEX: Southern Self-Replacing +\$104 Northern Self-Replacing +\$82 Southern Baldy Maternal +\$112 Northern Baldy Terminal +\$91**TRAITS OBSERVED:** BWT,600WT,SS,FAT,EMA,IMF,Genomics**NOTES:** Tahoe S097 is a high growth docile bull with great skin and hair out of a very good Black Hawk K7 cow that is rapidly becoming one of the best Black Hawk cows we've bred.

5

Battalion Tampa S095

(H)**D.O.B.**
01/04/2021**Rego No.**
BHES095**Account.**
Battalion Livestock**PURCHASER** **PRICE \$**

PUTE DUSKY D16 (H)

LOCHARBURN GERRY 11004 (IMP NZL) (H)

LOCHARBURN BRYONIA 02124 (H)

SIRE: KAROONDA TAUPO (AI) (H)

WALLAN CREEK HAYMAKER D225 (H)

KAROONDA MARITANA H201 (H)

KAROONDA MARITANA A093 (H)

YARRAM UNIQUE F181 (H)

COURALLIE KODIAK K592 (AI) (H)

COURALLIE Z3 PRUDENCE F214 (AI) (H)

DAM: BATTALION FIRST DAY N073 (H)

KALUDAH TURPS (AI) (H)

STRATHLEIGH FIRST DAY E353 (H)

STRATHLEIGH FIRST DAY B888 (H)



BW	200	400	600	MCW	Milk	SS	CWT	EMA	Rib	Rump	RBV%	IMF%
+3.5	+25	+48	+72	+74	+15	+2.0	+46	+2.9	+0.1	+0.6	-0.1	+0.7
66%	62%	61%	65%	54%	46%	70%	52%	43%	46%	49%	40%	46%

INDEX: Southern Self-Replacing +\$86 Northern Self-Replacing +\$67 Southern Baldy Maternal +\$81 Northern Baldy Terminal +\$61**TRAITS OBSERVED:** BWT,600WT,SS,EMA,IMF,Genomics**NOTES:** Tampa S095, an extremely soft easy doing bull with plenty of shape and excellent constitution. Dark and soft with loose skin and a low birthweight, he should breed very functional females.

6

Battalion Blackhawk S105

(H)**D.O.B.**
17/07/2021**Rego No.**
BHES105**Account.**
Battalion Livestock**PURCHASER** **PRICE \$**

KAROONDA LINGO (AI) (H)

SOUTH BOOROOK BOMBAY (H)

S BOOROOK BRIDESMAID D34 (AI) (H)

SIRE: BATTALION BLACK HAWK K7 (H)

MAWARRA VIRGINIAN (H)

BATTALION CHERRY RIPE 6 (AI) (H)

MOORLANDS CHERRY RIPE W155 (H)

MAWARRA TRAIL BLAZER (AI) (H)

THORNLEIGH TRAIL BLAZER E341 (AI) (H)

THORNLEIGH JULIET Z303 (H)

DAM: THORNLEIGH 341 SNOWFLAKE J337 (H)

LCI 157K RIBSTONE 83S (IMP CAN) (H)

THORNLEIGH 83S SNOWFLAKE D195 (AI) (H)

THORNLEIGH Q141 SNOWFLAKE U154 (H)



BW	200	400	600	MCW	Milk	SS	CWT	EMA	Rib	Rump	RBV%	IMF%
+3.8	+27	+53	+77	+67	+14	+1.8	+53	+5.0	+1.2	+2.3	+0.9	+0.4
71%	66%	66%	70%	60%	51%	73%	58%	51%	53%	56%	48%	53%

INDEX: Southern Self-Replacing +\$141 Northern Self-Replacing +\$133 Southern Baldy Maternal +\$149 Northern Baldy Terminal +\$111**TRAITS OBSERVED:** BWT,600WT,SS,EMA,IMF,Genomics

NOTES: Look at the trademark Black Hawk K7 butt shape on this bull. We really admire how deep he carries the muscle down his hind leg. Such an easy doing sire that will add weight to his vealers in the form of depth and width.

7

Battalion Dom Lad R093 (AI)(ET)(H)



D.O.B.
21/12/2020

Rego No.
BHER093

Account.
Battalion Livestock

PURCHASER **PRICE \$**

STR STANDARD 256B DOM LAD 68L (H)
STANDARD 68L DOM LAD 38T (IMP CAN) (H)
K 64H RIBSTONE LADY 112N (H)

SIRE: BOWMONT DOM LAD G085 (AI) (H)

ALKIRA VIKING (AI) (H)
BOWMONT MARITANA Z486 (AI) (H)
BOWMONT MARITANA 331 (H)

COOTHARABA MAGNUM (H)
MAWARRA VIRGINIAN (H)
MAWARRA CHERRY RIPE 263 (H)

DAM: BATTALION CHERRY RIPE 6 (AI) (H)

ONSLow SHARKA T019 (H)
MOORLANDS CHERRY RIPE W155 (H)
MOORLANDS CHERRY RIPE Q028 (H)



BW	200	400	600	MCW	Milk	SS	CWT	EMA	Rib	Rump	RBV%	IMF%
+6.9	+39	+68	+102	+75	+16	+1.8	+65	+5.5	+1.1	+1.9	+1.1	+1.4
72%	70%	70%	71%	64%	61%	71%	61%	54%	58%	61%	54%	59%

INDEX: Southern Self-Replacing +\$175 Northern Self-Replacing +\$156 Southern Baldy Maternal +\$161 Northern Baldy Terminal +\$108

TRAITS OBSERVED: 400WT,600WT,SS,FAT,EMA,IMF,Genomics

NOTES: Full brother to B. Dynamite R092 (Lot 2). His dam was one of the best cows we've ever breed. This guy has that round muscle pattern look about him that is evident when looking at him from any angle.

8

Battalion Blackjack S098

(H)**D.O.B.**
10/04/2021**Rego No.**
BHES098**Account.**
Battalion Livestock**PURCHASER** **PRICE \$**

SOUTH BOOROOK BOMBAY (H)

BATTALION BLACK HAWK K7 (H)

BATTALION CHERRY RIPE 6 (AI) (H)

SIRE: BATTALION BLACKJACK P058 (AI) (ET) (H)

BOWMONT WIZARD C076 (AI) (H)

BOWMONT QUEEN F024 (AI) (H)

BOWMONT QUEEN C117 (H)

SMITHSTON WEE DRAM ET1 (AI) (ET) (H)

ECHO PARK WARATAH (AI) (H)

ECHO PARK BETTY 23 (AI) (H)

DAM: BATTALION SILKY 2 (H)

EURANGATUCK ALDERSHOT (H)

SMITHSTON SILKY Z231 (H)

SMITHSTON SILKY X053 ET (ET) (H)

**GRAND DAM**

BW	200	400	600	MCW	Milk	SS	CWT	EMA	Rib	Rump	RBV%	IMF%
+4.9	+28	+54	+76	+64	+15	+1.6	+48	+5.3	+1.2	+2.3	+0.6	+0.7
68%	62%	62%	66%	55%	48%	70%	52%	43%	47%	50%	41%	47%

INDEX: Southern Self-Replacing +\$118 Northern Self-Replacing +\$105 Southern Baldy Maternal +\$111 Northern Baldy Terminal +\$82**TRAITS OBSERVED:** BWT,600WT,SS,EMA,IMF,Genomics **GENETIC CONDITION:** IEF, HYC, DLF

NOTES: Plenty of carcase here! This bull has always been one of those calves that has had that natural thickness and shape that catches your eye in the paddock. His sire (B. Blackjack P058) was the 2020 sale topper at \$15,000 purchased by John & Maree Smith.

9

Battalion Keepsake S106

(H)

D.O.B.
20/07/2021

Rego No.
BHES106

Account.
Battalion Livestock

PURCHASER **PRICE \$**

MAWARRA UNIQUE C041 (AI) (H)

YARRAM UNIQUE F181 (H)

YARRAM FLOSSIE A096 (H)

SIRE: COURALLIE KODIAK K592 (AI) (H)

KIWI ZABEST Z3 (IMP NZL) (H)

COURALLIE Z3 PRUDENCE F214 (AI) (H)

COURALLIE A230 PRUDENCE C095 (H)

MAWARRA UNIQUE C041 (AI) (H)

CARA PARK UNIQUE J324 (AI) (H)

CARA PARK TREASURE F037 (AI) (H)

DAM: BATTALION PRUDENCE M060 (AI) (H)

INJEMIRA ADVANCE V093 (H)

DUNOON PRUDENCE Z211 (H)

DUNOON PRUDENCE W027 (H)



BW	200	400	600	MCW	Milk	SS	CWT	EMA	Rib	Rump	RBV%	IMF%
+6.7	+43	+75	+113	+103	+19	+2.6	+75	+6.3	-0.3	+0.0	+2.0	+0.6
72%	65%	65%	70%	60%	47%	72%	56%	48%	51%	54%	49%	51%

INDEX: Southern Self-Replacing +\$171 Northern Self-Replacing +\$149 Southern Baldy Maternal +\$168 Northern Baldy Terminal +\$125

TRAITS OBSERVED: BWT,600WT,SS,FAT,EMA,IMF,Genomics

NOTES: Keepsake S106 is very correct in his structure with a good wide base and is exceptionally well balanced. He would be well suited to breeding wealers that look great from above in the weaner sales.

GET **NEW**

TWICE AS TOUGH

ON WORMS

DECTOMAX + LEVAMISOLE

DECTOMAX^V

doramectin and levamisole injection



NORTH WEST
PETROLEUM

Servicing the North West Area

Farm Fuel Deliveries

Gulf Western Lubricants

Shell Lubricants

Valvoline Lubricants

Farm Produce

Gas - Phone Credit - Groceries

Truck, Car & 4WD Tyres



26 Inverell Street, Delungra NSW 2403
0267 248 484 | 0428 637 091 Brian | 0448 498 516 Mitch
accounts@northwestpetroleum.com.au

10

Cara Park Emperor S1036

(H)**D.O.B.**
13/07/2021**Rego No.**
JENS1036**Account.**
JE Newnham & Co**PURCHASER** **PRICE \$**

CHURCHILL A1 ET (IMP USA) (H)

MAWARRA EMPEROR (AI) (ET) (H)

MAWARRA MINERVA 816 (AI) (ET) (H)

SIRE: TALBALBA EMPEROR P043 (AI) (H)

DEVON COURT ADVANCE F052 (H)

TALBALBA CHOICE K47 (H)

TALBALBA CHOICE F132 (H)

GH NEON 17N (IMP CAN) (H)

MAWARRA UNIQUE C041 (AI) (H)

MAWARRA MINERVA 554 ET1 (AI) (ET) (H)

DAM: CARA PARK PEARL M633 (H)

BOWMONT STORM C093 (H)

CARA PARK PEARL H227 (AI) (H)

CARA PARK PEARL C707 (AI) (H)

CARA PARK
EST. **HEREFORDS** 1975

BW	200	400	600	MCW	Milk	SS	CWT	EMA	Rib	Rump	RBV%	IMF%
+3.9	+31	+59	+88	+78	+17	+1.0	+62	+5.0	+0.1	+0.3	+1.4	+1.1
74%	68%	67%	70%	61%	50%	76%	57%	48%	52%	55%	49%	52%

INDEX: Southern Self-Replacing +\$142 Northern Self-Replacing +\$125 Southern Baldy Maternal +\$142 Northern Baldy Terminal +\$109**TRAITS OBSERVED:** BWT,200WT,400WT,600WT,SS,FAT,EMA,IMF,Genomics

NOTES: High performing bull with thickness and depth of body, great spring of rib and hind quarter. Always has displayed great doing ability with his Net Feed Efficiency well inside the top 1% of the breed. Well balanced carcass data with Eye Muscle Area, Intramuscular Fat and Retail Beef Yield in the top 20% of the breed. Out of a very good Unique daughter who has one of the better weaner bull calves for next year's sale. Semen will be collected prior to the sale and retained for in herd use.

11

Cara Park Emperor S1013

(H)**D.O.B.**
01/07/2021**Rego No.**
JENS1013**Account.**
JE Newnham & Co**PURCHASER** **PRICE \$**

CHURCHILL A1 ET (IMP USA) (H)

MAWARRA EMPEROR (AI) (ET) (H)

MAWARRA MINERVA 816 (AI) (ET) (H)

SIRE: TALBALBA EMPEROR P043 (AI) (H)

DEVON COURT ADVANCE F052 (H)

TALBALBA CHOICE K47 (H)

TALBALBA CHOICE F132 (H)

RED HILL BLUE BOY (H)

BATTALION BUCKSHOT (AI) (ET) (H)

COURALLIE CONSTANCE V086 (H)

DAM: CARA PARK CURLEY P8015 (H)

CARA PARK FREEDOM G148 (H)

CARA PARK CURLEY L555 (H)

CARA PARK CURLEY H242 (H)

CARA PARK
EST. **HEREFORDS** 1975

BW	200	400	600	MCW	Milk	SS	CWT	EMA	Rib	Rump	RBV%	IMF%
+4.7	+40	+69	+97	+92	+14	+2.5	+64	+3.7	-0.8	-1.1	+1.4	+1.0
73%	67%	67%	70%	60%	47%	75%	56%	46%	50%	54%	47%	50%

INDEX: Southern Self-Replacing +\$152 Northern Self-Replacing +\$135 Southern Baldy Maternal +\$160 Northern Baldy Terminal +\$126**TRAITS OBSERVED:** BWT,200WT,400WT,600WT,SS,FAT,EMA,IMF,Genomics

NOTES: An attractive well balanced bull with great shape, length and thickness. Good Breedplan data across the board. Low Birth Weight with high growth, 600 Day Weight in the top 15% and Retail Beef Yield top 20%. Semen will be collected prior to the sale and retained for in herd use.

12

Cara Park Emperor S1008

(H)**D.O.B.**
27/06/2021**Rego No.**
JENS1008**Account.**
JE Newnham & Co**PURCHASER** **PRICE \$**

CHURCHILL A1 ET (IMP USA) (H)

MAWARRA EMPEROR (AI) (ET) (H)

MAWARRA MINERVA 816 (AI) (ET) (H)

SIRE: TALBALBA EMPEROR P043 (AI) (H)

DEVON COURT ADVANCE F052 (H)

TALBALBA CHOICE K47 (H)

TALBALBA CHOICE F132 (H)

GLENDAN PARK STORM W134 (H)

BOWMONT STORM C093 (H)

BOWMONT MARITANA W168 (AI) (H)

DAM: CARA PARK WONDER L H220 (AI) (H)

CARA PARK PLAYBOY K672 ET1 (ET) (H)

CARA PARK WONDER LASS C714 (AI) (H)

CARA PARK WONDER L Z424 (H)

CARA PARK
EST. **HEREFORDS** 1975

BW	200	400	600	MCW	Milk	SS	CWT	EMA	Rib	Rump	RBV%	IMF%
+3.4	+31	+56	+84	+80	+13	+1.7	+58	+4.8	-0.2	-0.2	+1.7	+1.2
74%	68%	67%	70%	61%	52%	76%	58%	49%	53%	56%	50%	53%

INDEX: Southern Self-Replacing +\$133 Northern Self-Replacing +\$123 Southern Baldy Maternal +\$141 Northern Baldy Terminal +\$115**TRAITS OBSERVED:** BWT,200WT,400WT,600WT,SS,FAT,EMA,IMF,Genomics

NOTES: Deep bodied, smooth shouldered bull with good overall volume. Good Breedplan figures, Low Birth Weight with good growth. Balanced carcass data with Retail Beef Yield in the top 10% of the breed. Intramuscular Fat in the top 17% of the breed. Out of the same cow as Cara Park Monarch, a bull that is breeding very well for Battalion Herefords.

13

Cara Park Emperor S1020

(H)**D.O.B.**
06/07/2021**Rego No.**
JENS1020**Account.**
JE Newnham & Co**PURCHASER** **PRICE \$**

CHURCHILL A1 ET (IMP USA) (H)

MAWARRA EMPEROR (AI) (ET) (H)

MAWARRA MINERVA 816 (AI) (ET) (H)

SIRE: TALBALBA EMPEROR P043 (AI) (H)

DEVON COURT ADVANCE F052 (H)

TALBALBA CHOICE K47 (H)

TALBALBA CHOICE F132 (H)

BANEMORE POMPEII T036 (AI) (H)

YAVENVALE FREEDOM (H)

YAVENVALE MELLOW U314 (H)

DAM: CARA PARK TREASURE M641 (H)

MAWARRA UNIQUE C041 (AI) (H)

CARA PARK TREASURE H218 (H)

CARA PARK TREASURE E947 (AI) (H)

CARA PARK
EST. **HEREFORDS** 1975

BW	200	400	600	MCW	Milk	SS	CWT	EMA	Rib	Rump	RBY%	IMF%
+5.8	+39	+68	+97	+77	+15	+1.7	+60	+4.6	-0.5	-0.8	+2.2	+0.8
73%	67%	67%	70%	60%	48%	75%	56%	47%	50%	54%	48%	51%

INDEX: Southern Self-Replacing +\$137 Northern Self-Replacing +\$118 Southern Baldy Maternal +\$126 Northern Baldy Terminal +\$92**TRAITS OBSERVED:** BWT,200WT,400WT,600WT,SS,FAT,EMA,IMF,Genomics**NOTES:** A robust, high performing bull with good structure & plenty of capacity. High growth in the top 15% for 600 Day Weight. Good carcase data with Retail Beef Yield in the top 5%.

14

Cara Park Emperor S1001

(H)**D.O.B.**
20/06/2021**Rego No.**
JENS1001**Account.**
JE Newnham & Co**PURCHASER** **PRICE \$**

CHURCHILL A1 ET (IMP USA) (H)

MAWARRA EMPEROR (AI) (ET) (H)

MAWARRA MINERVA 816 (AI) (ET) (H)

SIRE: TALBALBA EMPEROR P043 (AI) (H)

DEVON COURT ADVANCE F052 (H)

TALBALBA CHOICE K47 (H)

TALBALBA CHOICE F132 (H)

DEVON COURT ADVANCE F052 (H)

TALBALBA ADVANCE L131 (H)

TALBALBA CHOICE D058 (AI) (H)

DAM: CARA PARK WONDER LASS P8064 (H)

BATTALION BUCKSHOT (AI) (ET) (H)

CARA PARK WONDER LASS L545 (H)

CARA PARK WONDER LASS G181 (H)

CARA PARK
EST. **HEREFORDS** 1975

BW	200	400	600	MCW	Milk	SS	CWT	EMA	Rib	Rump	RBV%	IMF%
+6.0	+40	+63	+99	+100	+13	+0.7	+60	+3.0	-0.5	-0.8	+1.1	+1.3
74%	67%	66%	69%	59%	47%	73%	55%	45%	50%	53%	46%	51%

INDEX: Southern Self-Replacing +\$132 Northern Self-Replacing +\$112 Southern Baldy Maternal +\$134 Northern Baldy Terminal +\$106**TRAITS OBSERVED:** BWT,200WT,400WT,600WT,SS,FAT,EMA,IMF,Genomics**NOTES:** A big growthy, free moving, well structured bull. Very good growth on Breedplan, top 10% for 600 Day Weight, good carcase data with Intramuscular Fat in the top 15%.

15

Cara Park Emperor S1026

(H)**D.O.B.**
09/07/2021**Rego No.**
JENS1026**Account.**
JE Newnham & Co

PURCHASER PRICE \$

CHURCHILL A1 ET (IMP USA) (H)

MAWARRA EMPEROR (AI) (ET) (H)

MAWARRA MINERVA 816 (AI) (ET) (H)

SIRE: TALBALBA EMPEROR P043 (AI) (H)

DEVON COURT ADVANCE F052 (H)

TALBALBA CHOICE K47 (H)

TALBALBA CHOICE F132 (H)

GLENDAN PARK STORM W134 (H)

BOWMONT STORM C093 (H)

BOWMONT MARITANA W168 (AI) (H)

DAM: CARA PARK PEARL L517 (AI) (H)

CARA PARK FREEDOM C788 (H)

CARA PARK PEARL G157 (H)

CARA PARK PEARL C702 (AI) (H)

CARA PARK

EST. HEREFORDS 1975

BW	200	400	600	MCW	Milk	SS	CWT	EMA	Rib	Rump	RBV%	IMF%
+4.4	+36	+62	+94	+85	+16	+0.5	+60	+3.0	-0.6	-0.8	+0.8	+1.2
73%	67%	66%	70%	60%	49%	75%	56%	48%	51%	55%	49%	51%

INDEX: Southern Self-Replacing +\$132 Northern Self-Replacing +\$110 Southern Baldy Maternal +\$141 Northern Baldy Terminal +\$113**TRAITS OBSERVED:** BWT,200WT,400WT,600WT,SS,FAT,EMA,IMF,Genomics

NOTES: A stylish well structured bull. Low Birth Weight with high growth in the top 20% of the breed. Intramuscular Fat in the top 20%. Out of a very good Storm C093 Cow.

16

Cara Park Emperor S1030

(H)**D.O.B.**
10/07/2021**Rego No.**
JENS1030**Account.**
JE Newnham & Co

PURCHASER..... PRICE \$.....

CHURCHILL A1 ET (IMP USA) (H)

MAWARRA EMPEROR (AI) (ET) (H)

MAWARRA MINERVA 816 (AI) (ET) (H)

SIRE: TALBALBA EMPEROR P043 (AI) (H)

DEVON COURT ADVANCE F052 (H)

TALBALBA CHOICE K47 (H)

TALBALBA CHOICE F132 (H)

WARRINGA GOOGLE G23 (H)

GLENDAN PARK KNOCKOUT K160 (ET) (H)

GLENDAN PARK LASS G013 (AI) (H)

DAM: CARA PARK CURLEY P8026 (H)

MAWARRA UNIQUE C041 (AI) (H)

CARA PARK CURLEY J303 (AI) (H)

CARA PARK CURLEY F021 (AI) (H)

CARA PARK

EST. HEREFORDS 1975

BW	200	400	600	MCW	Milk	SS	CWT	EMA	Rib	Rump	RBV%	IMF%
+4.8	+35	+63	+93	+89	+14	+1.9	+63	+4.8	-1.1	-1.7	+2.6	+0.5
72%	66%	64%	66%	57%	47%	69%	54%	45%	50%	52%	44%	50%

INDEX: Southern Self-Replacing +\$152 Northern Self-Replacing +\$137 Southern Baldy Maternal +\$163 Northern Baldy Terminal +\$127**TRAITS OBSERVED:** BWT,200WT,400WT,600WT,SS,FAT,EMA,IMF,Genomics

NOTES: A bull with a great outlook, length and balance. Would be suitable for heifer joining. Low Birth Weight, high growth, top 20% for 600 Day Weight and top 1% Retail Beef Yield.

17

Cara Park Emperor S1044

(H)**D.O.B.**
16/07/2021**Rego No.**
JENS1044**Account.**
JE Newnham & Co**PURCHASER** **PRICE \$**

CHURCHILL A1 ET (IMP USA) (H)

MAWARRA EMPEROR (AI) (ET) (H)

MAWARRA MINERVA 816 (AI) (ET) (H)

SIRE: TALBALBA EMPEROR P043 (AI) (H)

DEVON COURT ADVANCE F052 (H)

TALBALBA CHOICE K47 (H)

TALBALBA CHOICE F132 (H)

DEVON COURT ADVANCE F052 (H)

TALBALBA ADVANCE L131 (H)

TALBALBA CHOICE D058 (AI) (H)

DAM: CARA PARK HARMONY P8029 (H)

MAWARRA UNIQUE C041 (AI) (H)

CARA PARK HARMONY H277 (H)

CARA PARK HARMONY A544 (AI) (H)

CARA PARK
EST. **HEREFORDS** 1975

BW	200	400	600	MCW	Milk	SS	CWT	EMA	Rib	Rump	RBV%	IMF%
+7.8	+43	+73	+115	+124	+17	+0.4	+67	+3.5	-0.7	-1.1	+1.4	+1.0
74%	67%	66%	69%	59%	47%	73%	55%	46%	51%	54%	46%	52%

INDEX: Southern Self-Replacing +\$145 Northern Self-Replacing +\$118 Southern Baldy Maternal +\$153 Northern Baldy Terminal +\$125**TRAITS OBSERVED:** BWT,200WT,400WT,600WT,SS,FAT,EMA,IMF,Genomics**NOTES:** Big volume bull with a soft skin and good conformation displaying length, width and depth of body. Top 2% of the breed for 600 Day Weight. Top 20% for Retail Beef Yield.

18

Cara Park Advance S1054

(H)**D.O.B.**
26/07/2021**Rego No.**
JENS1054**Account.**
JE Newnham & Co**PURCHASER** **PRICE \$**

INJEMIRA ADVANCE C085 (H)

DEVON COURT ADVANCE F052 (H)

DEVON COURT LIONESS A207 (H)

SIRE: TALBALBA ADVANCE L131 (H)

COOTHARABA MAGNUM (H)

TALBALBA CHOICE D058 (AI) (H)

TALBALBA CHOICE 77 (AI) (H)

RED HILL BLUE BOY (H)

BATTALION BUCKSHOT (AI) (ET) (H)

COURALLIE CONSTANCE V086 (H)

DAM: CARA PARK ALETHEA L533 (H)

MAWARRA UNIQUE C041 (AI) (H)

CARA PARK ALETHEA G171 (H)

CARA PARK ALETHEA W154 (H)

CARA PARK
EST. **HEREFORDS** 1975

BW	200	400	600	MCW	Milk	SS	CWT	EMA	Rib	Rump	RBV%	IMF%
+7.9	+35	+53	+83	+78	+12	+2.3	+45	+4.0	+0.9	+1.4	+0.0	+1.7
73%	67%	68%	70%	61%	50%	76%	57%	47%	50%	54%	48%	49%

INDEX: Southern Self-Replacing +\$110 Northern Self-Replacing +\$91 Southern Baldy Maternal +\$96 Northern Baldy Terminal +\$69**TRAITS OBSERVED:** BWT,200WT,400WT,600WT,SS,FAT,EMA,IMF,Genomics

NOTES: An attractive well-structured bull, with width and depth throughout. Good skin and hair. He is exceptional for Intramuscular Fat on Breedplan, being in the top 5% and a leader in this trait for our sale draft.

19

Cara Park Advance S1050

(H)**D.O.B.**
23/07/2021**Rego No.**
JENS1050**Account.**
JE Newnham & Co**PURCHASER**..... **PRICE \$**.....

INJEMIRA ADVANCE C085 (H)

DEVON COURT ADVANCE F052 (H)

DEVON COURT LIONESS A207 (H)

SIRE: TALBALBA ADVANCE L131 (H)

COOTHARABA MAGNUM (H)

TALBALBA CHOICE D058 (AI) (H)

TALBALBA CHOICE 77 (AI) (H)

RED HILL BLUE BOY (H)

BATTALION BUCKSHOT (AI) (ET) (H)

COURALLIE CONSTANCE V086 (H)

DAM: CARA PARK CURLEY N723 (H)

BOWMONT STORM C093 (H)

CARA PARK CURLEY K428 (AI) (H)

CARA PARK CURLEY D884 (H)

CARA PARK
EST. HEREFORDS 1975

BW	200	400	600	MCW	Milk	SS	CWT	EMA	Rib	Rump	RBV%	IMF%
+7.2	+36	+57	+85	+93	+14	+1.7	+46	+2.9	+0.0	+0.4	+0.5	+1.0
73%	67%	67%	70%	60%	49%	76%	56%	47%	50%	54%	48%	49%

INDEX: Southern Self-Replacing +\$92 Northern Self-Replacing +\$73 Southern Baldy Maternal +\$83 Northern Baldy Terminal +\$67**TRAITS OBSERVED:** BWT,200WT,400WT,600WT,SS,FAT,EMA,IMF,Genomics**NOTES:** A quality bull with great skin and hair. Good conformation with width and depth through to the hind quarter.

20

Cara Park Advance S1061

(H)**D.O.B.**
01/08/2021**Rego No.**
JENS1061**Account.**
JE Newnham & Co**PURCHASER**..... **PRICE \$**.....

INJEMIRA ADVANCE C085 (H)

DEVON COURT ADVANCE F052 (H)

DEVON COURT LIONESS A207 (H)

SIRE: TALBALBA ADVANCE L131 (H)

COOTHARABA MAGNUM (H)

TALBALBA CHOICE D058 (AI) (H)

TALBALBA CHOICE 77 (AI) (H)

GLENDAN PARK STORM W134 (H)

BOWMONT STORM C093 (H)

BOWMONT MARITANA W168 (AI) (H)

DAM: CARA PARK ALETHEA K409 (AI) (H)

INJEMIRA ADVANCE V093 (H)

CARA PARK ALETHEA E918 (AI) (H)

CARA PARK ALETHEA B619 (AI) (H)

CARA PARK
EST. HEREFORDS 1975

BW	200	400	600	MCW	Milk	SS	CWT	EMA	Rib	Rump	RBV%	IMF%
+8.2	+37	+61	+103	+97	+15	+1.0	+57	+4.4	-0.2	+0.1	+1.4	+0.7
74%	68%	68%	71%	62%	52%	76%	58%	49%	52%	56%	50%	52%

INDEX: Southern Self-Replacing +\$109 Northern Self-Replacing +\$84 Southern Baldy Maternal +\$96 Northern Baldy Terminal +\$68**TRAITS OBSERVED:** BWT,200WT,400WT,600WT,SS,FAT,EMA,IMF,Genomics**NOTES:** A robust well structured bull with a great muscle pattern. Good growth for 600 Day Weight in the top 8% of the breed. Above breed average for carcase traits, top 20% for Retail Beef Yield.

21

Cara Park Advance S1014

(H)**D.O.B.**
02/07/2021**Rego No.**
JENS1014**Account.**
JE Newnham & Co**PURCHASER**..... **PRICE \$**.....

INJEMIRA ADVANCE C085 (H)
 DEVON COURT ADVANCE F052 (H)
 DEVON COURT LIONESS A207 (H)

SIRE: TALBALBA ADVANCE L131 (H)

COOTHARABA MAGNUM (H)
 TALBALBA CHOICE D058 (AI) (H)
 TALBALBA CHOICE 77 (AI) (H)
 MAWARRA UNIQUE C041 (AI) (H)

CARA PARK UNIQUE K473 (H)
 CARA PARK MARSHALL LASS C749 (AI) (H)

DAM: CARA PARK HARMONY N722 (H)

BATTALION BUCKSHOT (AI) (ET) (H)
 CARA PARK HARMONY K488 (TW) (H)
 CARA PARK HARMONY A544 (AI) (H)

CARA PARK

EST. HEREFORDS 1975

BW	200	400	600	MCW	Milk	SS	CWT	EMA	Rib	Rump	RBV%	IMF%
+9.1	+43	+68	+108	+113	+16	+1.5	+58	+3.4	-1.4	-2.0	+2.0	+0.0
73%	66%	66%	69%	59%	47%	75%	55%	46%	49%	53%	47%	48%

INDEX: Southern Self-Replacing +\$103 Northern Self-Replacing +\$74 Southern Baldy Maternal +\$91 Northern Baldy Terminal +\$68**TRAITS OBSERVED:** BWT,200WT,400WT,600WT,SS,FAT,EMA,IMF,Genomics

NOTES: An attractive, big mobile bull, exceptional width through the pins down to the hocks. Top 5% for 600 Day Weight. Retail Beef Yield in the top 10%.

22

Cara Park Advance S1002

(H)**D.O.B.**
21/06/2021**Rego No.**
JENS1002**Account.**
JE Newnham & Co**PURCHASER**..... **PRICE \$**.....

INJEMIRA ADVANCE C085 (H)
 DEVON COURT ADVANCE F052 (H)
 DEVON COURT LIONESS A207 (H)

SIRE: TALBALBA ADVANCE L131 (H)

COOTHARABA MAGNUM (H)
 TALBALBA CHOICE D058 (AI) (H)
 TALBALBA CHOICE 77 (AI) (H)
 RED HILL BLUE BOY (H)
 BATTALION BUCKSHOT (AI) (ET) (H)
 COURALLIE CONSTANCE V086 (H)

DAM: CARA PARK ALETHEA P8016 (H)

BOWMONT STORM C093 (H)
 CARA PARK ALETHEA L520 (AI) (H)
 CARA PARK ALETHEA B604 (AI) (H)

CARA PARK

EST. HEREFORDS 1975

BW	200	400	600	MCW	Milk	SS	CWT	EMA	Rib	Rump	RBV%	IMF%
+6.9	+36	+62	+94	+98	+18	+1.3	+54	+4.3	-1.3	-1.7	+2.0	+0.8
73%	67%	68%	71%	61%	49%	76%	57%	47%	50%	54%	48%	49%

INDEX: Southern Self-Replacing +\$111 Northern Self-Replacing +\$89 Southern Baldy Maternal +\$118 Northern Baldy Terminal +\$96**TRAITS OBSERVED:** BWT,200WT,400WT,600WT,SS,FAT,EMA,IMF,Genomics

NOTES: A large framed bull with plenty of volume, long and thick with a great hind leg. Balanced Breedplan data with 600 Day Weight in the top 20%. Retail Beef Yield in the top 10%.

23

Cara Park Advance S1035

(H)

D.O.B.
12/07/2021

Rego No.
JENS1035

Account.
JE Newnham & Co

PURCHASER **PRICE \$**

INJEMIRA ADVANCE C085 (H)
DEVON COURT ADVANCE F052 (H)
DEVON COURT LIONESS A207 (H)

SIRE: TALBALBA ADVANCE L131 (H)

COOTHARABA MAGNUM (H)
TALBALBA CHOICE D058 (AI) (H)
TALBALBA CHOICE 77 (AI) (H)

RED HILL BLUE BOY (H)
BATTALION BUCKSHOT (AI) (ET) (H)
COURALLIE CONSTANCE V086 (H)

DAM: CARA PARK WONDER LASS P8011 (H)

CARA PARK UNIQUE H295 (H)
CARA PARK WONDER LASS L574 (H)
CARA PARK WONDER LASS H225 (AI) (H)

CARA PARK
EST. **HEREFORDS** 1975

BW	200	400	600	MCW	Milk	SS	CWT	EMA	Rib	Rump	RBV%	IMF%
+7.9	+39	+60	+97	+101	+12	+2.1	+53	+3.9	-0.9	-1.2	+1.3	+1.4
73%	67%	68%	71%	61%	48%	76%	57%	46%	49%	53%	47%	48%

INDEX: Southern Self-Replacing +\$120 Northern Self-Replacing +\$98 Southern Baldy Maternal +\$116 Northern Baldy Terminal +\$89

TRAITS OBSERVED: BWT,200WT,400WT,600WT,SS,FAT,EMA,IMF,Genomics

NOTES: Another large framed bull with a very good hind quarter. Top 15% for 600 Day Weight. Top 15% for Intramuscular Fat.

FOR ALL OF YOUR FARMING, GRAZING AND NURSERY NEEDS

WILL NEWBERRY 0427 322 287

JEFF DUDDY 0409 811 950

118 WENTWORTH STREET



SAY & CO RURAL

GLEN INNES, NSW - (02) 6732 2287

OVER 40 YEARS OF SALES & SERVICE TO THE MOTORCYCLE INDUSTRY



VSM
VINCE STRANG MOTORCYCLES



Kawasaki



HONDA



SUZUKI



Husqvarna



Beta
motorcycles



KYMCO

259 Byron Street, Inverell, NSW, 2360 - PH: 02 6721 0610



24

Battalion Burton S116

(H)**D.O.B.**
17/09/2021**Rego No.**
BHES116**Account.**
Battalion Livestock**PURCHASER** **PRICE \$**

KAROONDA LINGO (AI) (H)

SOUTH BOOROOK BOMBAY (H)

S BOOROOK BRIDESMAID D34 (AI) (H)

SIRE: BATTALION BOSTON N048 (ET) (H)

MAWARRA VIRGINIAN (H)

BATTALION CHERRY RIPE 6 (AI) (H)

MOORLANDS CHERRY RIPE W155 (H)

YAVENVALE HURRICANE (H)

BOWMONT HURRICANE E021 (AI) (H)

BOWMONT L MINERVA C127 (H)

DAM: BOWMONT QUEEN H043 (AI) (H)

BOWMONT STORM C093 (H)

BOWMONT QUEEN F110 (H)

BOWMONT QUEEN C037 (H)

**DAM**

BW	200	400	600	MCW	Milk	SS	CWT	EMA	Rib	Rump	RBV%	IMF%
+3.7	+28	+52	+76	+75	+15	+1.1	+50	+2.3	-0.5	-0.1	+0.8	-0.1
68%	63%	64%	68%	60%	49%	71%	55%	46%	51%	55%	48%	50%

INDEX: Southern Self-Replacing +\$99 Northern Self-Replacing +\$82 Southern Baldy Maternal +\$109 Northern Baldy Terminal +\$86**TRAITS OBSERVED:** BWT,600WT,SS,FAT,EMA,IMF,Genomics**NOTES:** Burton S116 is one of the youngest Battalion bulls. He is a low-birth-weight bull sired by our resident heifer bull. Long and dark with a great outlook.

25

Battalion Advance S115

(AI)(ET)(H)**D.O.B.**
06/09/2021**Rego No.**
BHES115**Account.**
Battalion Livestock**PURCHASER** **PRICE \$**

INJEMIRA ADVANCE Z080 (AI) (H)

INJEMIRA ADVANCE C085 (H)

INJEMIRA MARINDA Y142 (H)

SIRE: DEVON COURT ADVANCE F052 (H)

GLENDAN PARK STORM W134 (H)

DEVON COURT LIONESS A207 (H)

DEVON COURT LIONESS U376 (H)

COOTHARABA MAGNUM (H)

MAWARRA VIRGINIAN (H)

MAWARRA CHERRY RIPE 263 (H)

DAM: BATTALION CHERRY RIPE 6 (AI) (H)

ONSLOW SHARKA T019 (H)

MOORLANDS CHERRY RIPE W155 (H)

MOORLANDS CHERRY RIPE Q028 (H)



BW	200	400	600	MCW	Milk	SS	CWT	EMA	Rib	Rump	RBV%	IMF%
+6.9	+38	+69	+110	+106	+20	+1.8	+70	+5.6	+1.1	+1.8	+1.1	+1.3
74%	70%	70%	72%	65%	61%	74%	62%	55%	58%	61%	56%	60%

INDEX: Southern Self-Replacing +\$159 Northern Self-Replacing +\$139 Southern Baldy Maternal +\$164 Northern Baldy Terminal +\$129**TRAITS OBSERVED:** BWT,600WT,SS,FAT,EMA,IMF,Genomics**NOTES:** Another young Battalion bull here with plenty of data. Top 10% for IMF, EMA and Carcase weight plus Top 5% for 600 days. A young bull with the best still to come.

26

Battalion Monarch S112

(H)

D.O.B.
21/08/2021

Rego No.
BHES112

Account.
Battalion Livestock

PURCHASER **PRICE \$**

GH NEON 17N (IMP CAN) (H)

MAWARRA UNIQUE C041 (AI) (H)

MAWARRA MINERVA 554 ET1 (AI) (ET) (H)

SIRE: CARA PARK MONARCH M647 (H)

BOWMONT STORM C093 (H)

CARA PARK WONDER L H220 (AI) (H)

CARA PARK WONDER LASS C714 (AI) (H)

THORNLEIGH 4P RIBSTONE C209 AI (AI) (H)

THORNLEIGH 209 RIBSTONE F152 (H)

THORNLEIGH SNOWFLAKE C129 AI (AI) (H)

DAM: THORNLEIGH 152 CONSTANCE J267 (H)

IRONBARK R176 HIGH ENERGY W487 (AI) (H)

THORNLEIGH W487 CONSTANCE A256 (H)

MERLANIE CONSTANCE 393 (H)



DAM

BW	200	400	600	MCW	Milk	SS	CWT	EMA	Rib	Rump	RBY%	IMF%
+6.4	+41	+73	+104	+100	+14	+3.8	+68	+4.7	-1.3	-1.7	+2.3	+0.7
65%	61%	61%	62%	53%	46%	69%	50%	43%	47%	50%	41%	46%

INDEX: Southern Self-Replacing +\$162 Northern Self-Replacing +\$144 Southern Baldy Maternal +\$162 Northern Baldy Terminal +\$125

TRAITS OBSERVED: BWT,SS,Genomics

NOTES: Another high growth Monarch son with a bit more width. He'll continue to improve as he matures.

27

Battalion Blackhawk S111 (AI)(ET)(H)



D.O.B.
14/08/2021

Rego No.
BHES111

Account.
Battalion Livestock

PURCHASER **PRICE \$**

KAROONDA LINGO (AI) (H)

SOUTH BOOROOK BOMBAY (H)

S BOOROOK BRIDESMAID D34 (AI) (H)

SIRE: BATTALION BLACK HAWK K7 (H)

MAWARRA VIRGINIAN (H)

BATTALION CHERRY RIPE 6 (AI) (H)

MOORLANDS CHERRY RIPE W155 (H)

FRANCO YAGES Y980 ET5 (AI) (ET) (H)

FRANCO BAZOOKA B250 (H)

FRANCO MISS MINERVA Y201 (H)

DAM: FRANCO CORISANDE E801 (H)

MOORLANDS NATIONAL R055 AI ET (ET) (H)

EURANGATUCK CORISANDE 2 (H)

EURANGATUCK CORISANDE (H)



BW	200	400	600	MCW	Milk	SS	CWT	EMA	Rib	Rump	RBV%	IMF%
+7.0	+34	+61	+90	+91	+11	+1.8	+51	+2.8	+0.4	+0.9	+0.4	+0.1
71%	68%	68%	69%	62%	56%	72%	58%	51%	54%	58%	50%	54%

INDEX: Southern Self-Replacing +\$118 Northern Self-Replacing +\$101 Southern Baldy Maternal +\$126 Northern Baldy Terminal +\$94

TRAITS OBSERVED: BWT,SS,Genomics

NOTES: Blackhawk S111 was one of our pick bulls from an early age and looked like he was on track to be one of the top bulls until getting temporarily sick. He has fully recovered and is catching back up quickly of late.

28

Battalion Unregistered Bull 610-2



D.O.B.
15/7/2021

Rego No.
Unreg

Account.
Battalion Livestock

PURCHASER PRICE \$

YARRAM UNIQUE F181

SIRE: COURALLIE KODIAK K592

COURALLIE Z3 PRUDENCE F214

BATTALION UNREGISTERED BULL 610-2

DUNDEE BARITONE RK2G2

DAM: DUNDEE HERD COW 610

DAM: DUNDEE HERD COW 621



NOTES: A big growthy Courallie Kodiak son. His full brother sold at last year's sale for \$21,000 to the Freeman family.

29

Battalion Moses S104

(H)

D.O.B.
17/06/2021

Rego No.
BHES104

Account.
Battalion Livestock

PURCHASER **PRICE \$**

GH NEON 17N (IMP CAN) (H)

MAWARRA UNIQUE C041 (AI) (H)

MAWARRA MINERVA 554 ET1 (AI) (ET) (H)

SIRE: CARA PARK MONARCH M647 (H)

BOWMONT STORM C093 (H)

CARA PARK WONDER L H220 (AI) (H)

CARA PARK WONDER LASS C714 (AI) (H)

YARRAM UNIQUE F181 (H)

COURALLIE KODIAK K592 (AI) (H)

COURALLIE Z3 PRUDENCE F214 (AI) (H)

DAM: BATTALION SILKY N071 (H)

ECHO PARK WARATAH (AI) (H)

BATTALION SILKY 2 (H)

SMITHSTON SILKY Z231 (H)



GRAND DAM

BW	200	400	600	MCW	Milk	SS	CWT	EMA	Rib	Rump	RBV%	IMF%
+6.6	+39	+73	+109	+115	+17	+2.6	+70	+5.9	-2.3	-2.8	+3.3	-0.3
71%	63%	63%	68%	57%	47%	72%	54%	47%	50%	53%	44%	50%

INDEX: Southern Self-Replacing +\$149 Northern Self-Replacing +\$126 Southern Baldy Maternal +\$152 Northern Baldy Terminal +\$119

TRAITS OBSERVED: BWT,600WT,SS,EMA,IMF,Genomics

NOTES: Plenty of growth here! Moses S104 ranks in the top 5% for 400 and 600 day growth, Carcass weight and EMA

30

Battalion Kodiak S107

(H)**D.O.B.**
22/07/2021**Rego No.**
BHES107**Account.**
Battalion Livestock**PURCHASER** **PRICE \$**

MAWARRA UNIQUE C041 (AI) (H)

YARRAM UNIQUE F181 (H)

YARRAM FLOSSIE A096 (H)

SIRE: COURALLIE KODIAK K592 (AI) (H)

KIWI ZABEST Z3 (IMP NZL) (H)

COURALLIE Z3 PRUDENCE F214 (AI) (H)

COURALLIE A230 PRUDENCE C095 (H)

KALUDAH JUSTICE (H)

EMU HOLES RADAR U36 (H)

EMU HOLES SIMONE R882 (H)

DAM: DUNDEE MARSHALL LASS 47 (H)

LOTUS QUEBEC (H)

DUNDEE MARSHALL L 29 (H)

DUNDEE MARSHALL L 22 (H)



BW	200	400	600	MCW	Milk	SS	CWT	EMA	Rib	Rump	RBY%	IMF%
+5.5	+31	+47	+74	+89	+10	-0.2	+40	+1.0	-1.3	-1.5	+0.8	-0.3
71%	65%	66%	70%	60%	52%	73%	57%	48%	51%	55%	49%	50%

INDEX: Southern Self-Replacing +\$69 Northern Self-Replacing +\$48 Southern Baldy Maternal +\$73 Northern Baldy Terminal +\$61**TRAITS OBSERVED:** BWT,600WT,SS,FAT,EMA,IMF,Genomics**NOTES:** A good soft Courallie Kodiak son with a naturally placid temperament.

31**Battalion Unique S109****(AI)(ET)(H)****D.O.B. 03/08/2021 Rego No. BHES109 Account. Battalion Livestock**

GH NEON 17N (IMP CAN) (H)

BALLAJONG VORTEX ET1 (AI) (ET) (H)

MAWARRA UNIQUE C041 (AI) (H)

SMITHSTON YOU BEAUT (H)

MAWARRA MINERVA 554 ET1 (AI) (ET) (H)

SMITHSTON CHERRY RIPE U162 ET2 (ET) (H)

SIRE: CARA PARK UNIQUE J324 (AI) (H)**DAM: DUNDEE BETTY 42 (AI) (H)**

BOWMONT STORM C093 (H)

WIDGIEWA JABIRU ET6 (ET) (H)

CARA PARK TREASURE F037 (AI) (H)

ECHO PARK BETTY 23 (AI) (H)

CARA PARK TREASURE B607 (AI) (H)

ECHO PARK BETTY 15 (H)

BW	200	400	600	MCW	Milk	SS	CWT	EMA	Rib	Rump	RBY%	IMF%
+5.5	+31	+57	+92	+88	+21	+0.5	+61	+6.5	-0.8	-1.0	+2.7	+0.1
71%	66%	65%	68%	59%	51%	70%	56%	47%	51%	54%	48%	51%

INDEX: Southern Self-Replacing +\$102 Northern Self-Replacing +\$77 Southern Baldy Maternal +\$83 Northern Baldy Terminal +\$61**TRAITS OBSERVED:** BWT,600WT,SS,FAT,EMA,IMF,Genomics**NOTES:** A well-marked Cara Park Unique J324 son with an EMA ranking in the top 5% of the breed.**PURCHASER**..... **PRICE \$**.....**32****Battalion Blackjack S096****(H)****D.O.B. 04/04/2021 Rego No. BHES096 Account. Battalion Livestock**

SOUTH BOOROOK BOMBAY (H)

FAULKLAND HAMILTON (AI) (H)

BATTALION BLACK HAWK K7 (H)

SUGARLOAF JIM JIM B302 (AI) (H)

BATTALION CHERRY RIPE 6 (AI) (H)

SUGARLOAF JEWEL W098 (H)

SIRE: BATTALION BLACKJACK P058 (AI) (ET) (H)**DAM: BATTALION PR CHRISTIAN K35 (H)**

BOWMONT WIZARD C076 (AI) (H)

SMITHSTON YOU BEAUT (H)

BOWMONT QUEEN F024 (AI) (H)

BATTALION PR CHRISTIAN 3 (AI) (H)

BOWMONT QUEEN C117 (H)

COURALLIE U244 PR CHRISTIAN Y312 (H)

BW	200	400	600	MCW	Milk	SS	CWT	EMA	Rib	Rump	RBY%	IMF%
+5.0	+31	+50	+68	+54	+15	+2.0	+48	+5.1	+1.2	+2.1	+1.0	-0.2
67%	61%	62%	66%	56%	46%	69%	52%	42%	46%	49%	43%	46%

INDEX: Southern Self-Replacing +\$111 Northern Self-Replacing +\$103 Southern Baldy Maternal +\$106 Northern Baldy Terminal +\$75**TRAITS OBSERVED:** BWT,600WT,SS,FAT,EMA,IMF,Genomics**NOTES:** A thick, smooth skinned, square made Blackjack P058 son.**PURCHASER**..... **PRICE \$**..... 59

INSIGNIA Company

Insignia Co. provides customised marketing merchandise specialising in trucker hats!



As cattle breeders ourselves we understand your industry



WWW.INSIGNIACO.COM.AU

 @insigniacompany  @insigniacustomcompany

 admin@insigniaco.com.au  02 6734 4134

co op **KILLARNEY CO-OP.**

IVY STREET, KILLARNEY PH:07 4664 1188



FOR ALL YOUR



STOCKFEED REQUIREMENTS



33

Cara Park Emperor S1033

(H)**D.O.B.**
11/07/2021**Rego No.**
JENS1033**Account.**
JE Newnham & Co

PURCHASER PRICE \$

CHURCHILL A1 ET (IMP USA) (H)

MAWARRA EMPEROR (AI) (ET) (H)

MAWARRA MINERVA 816 (AI) (ET) (H)

SIRE: TALBALBA EMPEROR P043 (AI) (H)

DEVON COURT ADVANCE F052 (H)

TALBALBA CHOICE K47 (H)

TALBALBA CHOICE F132 (H)

RED HILL BLUE BOY (H)

BATTALION BUCKSHOT (AI) (ET) (H)

COURALLIE CONSTANCE V086 (H)

DAM: CARA PARK WONDER LASS P8012 (H)

MAWARRA UNIQUE C041 (AI) (H)

CARA PARK WONDER LASS L583 (H)

CARA PARK WONDER LASS G149 (AI) (H)

CARA PARK
EST. **HEREFORDS** 1975

BW	200	400	600	MCW	Milk	SS	CWT	EMA	Rib	Rump	RBV%	IMF%
+5.6	+38	+68	+101	+89	+16	+3.2	+62	+4.1	-0.5	-0.6	+1.5	+0.9
73%	66%	65%	68%	59%	48%	72%	55%	46%	50%	53%	46%	51%

INDEX: Southern Self-Replacing +\$156 Northern Self-Replacing +\$134 Southern Baldy Maternal +\$153 Northern Baldy Terminal +\$115**TRAITS OBSERVED:** BWT,200WT,400WT,600WT,SS,FAT,EMA,IMF,Genomics**NOTES:** Big bull with ideal skin and hair. Good Breedplan data on carcase and growth with 600 Day Weight in the top 10% of the breed.

34

Cara Park Emperor S1079

(H)**D.O.B.**
16/08/2021**Rego No.**
JENS1079**Account.**
JE Newnham & Co**PURCHASER** **PRICE \$**

CHURCHILL A1 ET (IMP USA) (H)

MAWARRA EMPEROR (AI) (ET) (H)

MAWARRA MINERVA 816 (AI) (ET) (H)

SIRE: TALBALBA EMPEROR P043 (AI) (H)

DEVON COURT ADVANCE F052 (H)

TALBALBA CHOICE K47 (H)

TALBALBA CHOICE F132 (H)

WARRINGA GOOGLE G23 (H)

GLENDAN PARK KNOCKOUT K160 (ET) (H)

GLENDAN PARK LASS G013 (AI) (H)

DAM: CARA PARK CURLEY P8048 (H)

CARA PARK ADVANCE B631 (AI) (H)

CARA PARK CURLEY K427 (AI) (H)

CARA PARK CURLEY G194 (H)

CARA PARK
EST. **HEREFORDS** 1975

BW	200	400	600	MCW	Milk	SS	CWT	EMA	Rib	Rump	RBV%	IMF%
+5.0	+41	+72	+105	+83	+22	+1.3	+74	+5.3	+0.2	+0.3	+1.6	+1.2
69%	66%	66%	69%	59%	48%	74%	56%	46%	50%	54%	47%	51%

INDEX: Southern Self-Replacing +\$170 Northern Self-Replacing +\$149 Southern Baldy Maternal +\$171 Northern Baldy Terminal +\$128**TRAITS OBSERVED:** BWT,200WT,400WT,600WT,SS,FAT,EMA,IMF,Genomics**NOTES:** A growthy bull with a lot of length and width through the body and hind quarter. High growth with good carcase data. The youngest bull in our draft. Top 5% for 600 Day Weight. Top 15% for Eye Muscle Area, Retail Beef Yield and Intramuscular Fat.

35

Cara Park Emperor S1062

(H)**D.O.B.**
02/08/2021**Rego No.**
JENS1062**Account.**
JE Newnham & Co**PURCHASER** **PRICE \$**

CHURCHILL A1 ET (IMP USA) (H)

MAWARRA EMPEROR (AI) (ET) (H)

MAWARRA MINERVA 816 (AI) (ET) (H)

SIRE: TALBALBA EMPEROR P043 (AI) (H)

DEVON COURT ADVANCE F052 (H)

TALBALBA CHOICE K47 (H)

TALBALBA CHOICE F132 (H)

GH NEON 17N (IMP CAN) (H)

MAWARRA UNIQUE C041 (AI) (H)

MAWARRA MINERVA 554 ET1 (AI) (ET) (H)

DAM: CARA PARK WONDER LASS P8074 (H)

BOWMONT STORM C093 (H)

CARA PARK WONDER LASS H225 (AI) (H)

CARA PARK WONDER LASS D857 (H)

CARA PARK
EST. **HEREFORDS** 1975

BW	200	400	600	MCW	Milk	SS	CWT	EMA	Rib	Rump	RBV%	IMF%
+6.0	+43	+70	+105	+91	+17	+1.9	+69	+4.7	-0.5	-0.7	+1.7	+1.5
73%	67%	67%	70%	61%	49%	75%	57%	48%	51%	55%	49%	52%

INDEX: Southern Self-Replacing +\$159 Northern Self-Replacing +\$137 Southern Baldy Maternal +\$154 Northern Baldy Terminal +\$117**TRAITS OBSERVED:** BWT,200WT,400WT,600WT,SS,FAT,EMA,IMF,Genomics**NOTES:** A very good bull upfront with length and depth of body. Top 5% for 600 Day Weight. Top 10% for Intramuscular Fat and Retail Beef Yield. Out of a good Unique cow.

36

Cara Park Emperor S1031

(H)**D.O.B.**
10/07/2021**Rego No.**
JENS1031**Account.**
JE Newnham & Co**PURCHASER** **PRICE \$**

CHURCHILL A1 ET (IMP USA) (H)

MAWARRA EMPEROR (AI) (ET) (H)

MAWARRA MINERVA 816 (AI) (ET) (H)

SIRE: TALBALBA EMPEROR P043 (AI) (H)

DEVON COURT ADVANCE F052 (H)

TALBALBA CHOICE K47 (H)

TALBALBA CHOICE F132 (H)

GLENDAN PARK STORM W134 (H)

BOWMONT STORM C093 (H)

BOWMONT MARITANA W168 (AI) (H)

DAM: CARA PARK WONDER LASS H225 (AI) (H)

YAVENVALE FREEDOM (H)

CARA PARK WONDER LASS D857 (H)

CARA PARK WONDER L V038 (H)

CARA PARK
EST. **HEREFORDS** 1975

BW	200	400	600	MCW	Milk	SS	CWT	EMA	Rib	Rump	RBV%	IMF%
+4.1	+38	+64	+92	+88	+18	+0.6	+62	+3.3	-0.6	-0.7	+1.1	+1.0
74%	68%	67%	70%	61%	51%	76%	57%	48%	52%	55%	49%	52%

INDEX: Southern Self-Replacing +\$126 Northern Self-Replacing +\$107 Southern Baldy Maternal +\$137 Northern Baldy Terminal +\$114**TRAITS OBSERVED:** BWT,200WT,400WT,600WT,SS,FAT,EMA,IMF,Genomics**NOTES:** A quality bull. Low birth weight, high growth would be suitable for heifer joining. Top 20% for 600 Day Weight. Out of a very good old Storm C093 cow.

37

Cara Park Emperor S1007

(H)**D.O.B.**
26/06/2021**Rego No.**
JENS1007**Account.**
JE Newnham & Co**PURCHASER**..... **PRICE \$**.....

CHURCHILL A1 ET (IMP USA) (H)
 MAWARRA EMPEROR (AI) (ET) (H)
 MAWARRA MINERVA 816 (AI) (ET) (H)

SIRE: TALBALBA EMPEROR P043 (AI) (H)
 DEVON COURT ADVANCE F052 (H)
 TALBALBA CHOICE K47 (H)
 TALBALBA CHOICE F132 (H)
 WARRINGA GOOGLE G23 (H)
 GLENDAN PARK KNOCKOUT K160 (ET) (H)
 GLENDAN PARK LASS G013 (AI) (H)

DAM: CARA PARK TREASURE P8077 (H)
 MAWARRA UNIQUE C041 (AI) (H)
 CARA PARK TREASURE H218 (H)
 CARA PARK TREASURE E947 (AI) (H)

CARA PARK
 EST. **HEREFORDS** 1975

BW	200	400	600	MCW	Milk	SS	CWT	EMA	Rib	Rump	RBY%	IMF%
+5.8	+40	+72	+106	+95	+14	+1.3	+70	+5.4	-0.1	-0.3	+2.1	+1.2
73%	67%	67%	70%	60%	48%	75%	57%	47%	51%	55%	48%	51%

INDEX: Southern Self-Replacing +\$171 Northern Self-Replacing +\$154 Southern Baldy Maternal +\$168 Northern Baldy Terminal +\$126**TRAITS OBSERVED:** BWT,200WT,400WT,600WT,SS,FAT,EMA,IMF,Genomics

NOTES: A very good bull. He is stout, possessing excellent length, width and depth of body through to the hind quarter. Good skin. Pigment 00/100. Very good growth and carcass data. Top 5% for 600 Day Weight. Top 15% Eye Muscle Area. Top 5% for Retail Beef Yield. Top 17% for Intramuscular Fat.

38

Cara Park Emperor S1004

(H)**D.O.B.**
24/06/2021**Rego No.**
JENS1004**Account.**
JE Newnham & Co**PURCHASER** **PRICE \$**

CHURCHILL A1 ET (IMP USA) (H)

MAWARRA EMPEROR (AI) (ET) (H)

MAWARRA MINERVA 816 (AI) (ET) (H)

SIRE: TALBALBA EMPEROR P043 (AI) (H)

DEVON COURT ADVANCE F052 (H)

TALBALBA CHOICE K47 (H)

TALBALBA CHOICE F132 (H)

WARRINGA GOOGLE G23 (H)

GLENDAN PARK KNOCKOUT K160 (ET) (H)

GLENDAN PARK LASS G013 (AI) (H)

DAM: CARA PARK PEARL N798 (H)

INJEMIRA ADVANCE V093 (H)

CARA PARK PEARL H206 (AI) (H)

CARA PARK PEARL E993 (H)

CARA PARK
EST. **HEREFORDS** 1975

BW	200	400	600	MCW	Milk	SS	CWT	EMA	Rib	Rump	RBV%	IMF%
+2.9	+31	+50	+68	+53	+16	+0.8	+48	+3.4	-0.3	-0.4	+1.7	+0.4
72%	66%	65%	69%	59%	48%	75%	55%	47%	50%	54%	48%	50%

INDEX: Southern Self-Replacing +\$111 Northern Self-Replacing +\$101 Southern Baldy Maternal +\$124 Northern Baldy Terminal +\$98**TRAITS OBSERVED:** BWT,200WT,400WT,600WT,SS,FAT,EMA,IMF,Genomics**NOTES:** Another very good bull, similar to the previous bull. Low birth weight would be good for heifer joining. Pigment 80/00. Top 12% for Retail Beef Yield.

39

Cara Park Advance S1046

(H)**D.O.B.**
18/07/2021**Rego No.**
JENS1046**Account.**
JE Newnham & Co**PURCHASER**..... **PRICE \$**.....

INJEMIRA ADVANCE C085 (H)
 DEVON COURT ADVANCE F052 (H)
 DEVON COURT LIONESS A207 (H)

SIRE: TALBALBA ADVANCE L131 (H)

COOTHARABA MAGNUM (H)
 TALBALBA CHOICE D058 (AI) (H)
 TALBALBA CHOICE 77 (AI) (H)
 GH NEON 17N (IMP CAN) (H)

MAWARRA UNIQUE C041 (AI) (H)
 MAWARRA MINERVA 554 ET1 (AI) (ET) (H)

DAM: CARA PARK MATCHLESS M622 (H)

EMU HOLES PERTH T33 (AI) (H)
 CARA PARK MATCHLESS B654 (H)
 CARA PARK MATCHLESS U903 (H)

CARA PARK

EST. HEREFORDS 1975

BW	200	400	600	MCW	Milk	SS	CWT	EMA	Rib	Rump	RBV%	IMF%
+7.6	+38	+64	+103	+94	+13	+1.9	+62	+5.3	+0.0	-0.1	+1.6	+1.2
73%	67%	68%	70%	61%	50%	75%	57%	48%	50%	54%	48%	49%

INDEX: Southern Self-Replacing +\$143 Northern Self-Replacing +\$120 Southern Baldy Maternal +\$127 Northern Baldy Terminal +\$88**TRAITS OBSERVED:** BWT,200WT,400WT,600WT,SS,FAT,EMA,IMF,Genomics

NOTES: A big, soft smooth coated easy doing bull, plenty of length and thickness throughout. High growth top 10% for 600 Day Weight. Good carcass data with top 15% for Eye Muscle Area, Retail Beef Yield and Intramuscular Fat. Out of a good big volume Unique daughter.

40

Cara Park Advance S1068

(H)**D.O.B.**
09/08/2021**Rego No.**
JENS1068**Account.**
JE Newnham & Co**PURCHASER**..... **PRICE \$**.....

INJEMIRA ADVANCE C085 (H)
 DEVON COURT ADVANCE F052 (H)
 DEVON COURT LIONESS A207 (H)

SIRE: TALBALBA ADVANCE L131 (H)

COOTHARABA MAGNUM (H)
 TALBALBA CHOICE D058 (AI) (H)
 TALBALBA CHOICE 77 (AI) (H)
 GH NEON 17N (IMP CAN) (H)

MAWARRA UNIQUE C041 (AI) (H)
 MAWARRA MINERVA 554 ET1 (AI) (ET) (H)

DAM: CARA PARK PEARL N778 (H)

BOWMONT STORM C093 (H)
 CARA PARK PEARL F003 (AI) (H)
 CARA PARK PEARL B615 (AI) (H)

CARA PARK

EST. HEREFORDS 1975

BW	200	400	600	MCW	Milk	SS	CWT	EMA	Rib	Rump	RBV%	IMF%
+5.6	+35	+60	+89	+84	+19	+0.9	+60	+5.5	-1.1	-1.5	+2.5	+0.7
74%	67%	68%	70%	61%	51%	76%	57%	49%	51%	55%	49%	51%

INDEX: Southern Self-Replacing +\$107 Northern Self-Replacing +\$86 Southern Baldy Maternal +\$97 Northern Baldy Terminal +\$74**TRAITS OBSERVED:** BWT,200WT,400WT,600WT,SS,FAT,EMA,IMF,Genomics

NOTES: A powerfully built bull with good length of body and an impressive muscle pattern. Also yielding in the top 2% of the breed for Retail Beef Yield and top 15% for Eye Muscle Area.

41

Cara Park Advance S1051

(H)

D.O.B.
24/07/2021

Rego No.
JENS1051

Account.
JE Newnham & Co

PURCHASER..... **PRICE \$**.....

INJEMIRA ADVANCE C085 (H)
DEVON COURT ADVANCE F052 (H)
DEVON COURT LIONESS A207 (H)

SIRE: TALBALBA ADVANCE L131 (H)

COOTHARABA MAGNUM (H)
TALBALBA CHOICE D058 (AI) (H)
TALBALBA CHOICE 77 (AI) (H)

RED HILL BLUE BOY (H)
BATTALION BUCKSHOT (AI) (ET) (H)
COURALLIE CONSTANCE V086 (H)

DAM: CARA PARK TREASURE M655 (H)

INJEMIRA ADVANCE V093 (H)
CARA PARK TREASURE F002 (AI) (H)
CARA PARK TREASURE Y349 (H)

CARA PARK
EST. **HEREFORDS** 1975

BW	200	400	600	MCW	Milk	SS	CWT	EMA	Rib	Rump	RBV%	IMF%
+5.5	+33	+51	+82	+85	+11	+1.1	+47	+3.4	-0.5	-0.6	+1.1	+0.9
73%	67%	68%	71%	61%	50%	76%	57%	47%	50%	54%	48%	49%

INDEX: Southern Self-Replacing +\$116 Northern Self-Replacing +\$100 Southern Baldy Maternal +\$129 Northern Baldy Terminal +\$102

TRAITS OBSERVED: BWT,200WT,400WT,600WT,SS,FAT,EMA,IMF,Genomics

NOTES: Good all round bull with well-balanced Breedplan data.



Notes

.....

.....

.....

.....

.....

.....

TROW Livestock Haulage

For all your livestock, fodder and machinery haulage needs
in the New England



0497 627 962



Thank you

Thank you to all successful purchasers, under bidders and all who attended the sale for your support. Any inspection and consideration of our cattle is much appreciated.

Grant, Kylie, Graeme & Natalie



Purchaser Details

NAME: _____

Trading Name: _____

Address: _____

Phone: _____ Mobile: _____

Email: _____

PIC Number: _____ Bid Card Number: _____

AGENT DETAILS

Company Name: _____

Agent Name: _____

Phone: _____ Mobile: _____

PURCHASE DETAILS

Lots Purchased: _____

Transport Required: Yes No

Insurance Required: Yes No

Society Transfer Required: Yes No

Herd Ident (if applicable): _____

Signature: _____

Date: _____

FOURTH ANNUAL SALE JULY 2022



TOP PRICE BULL

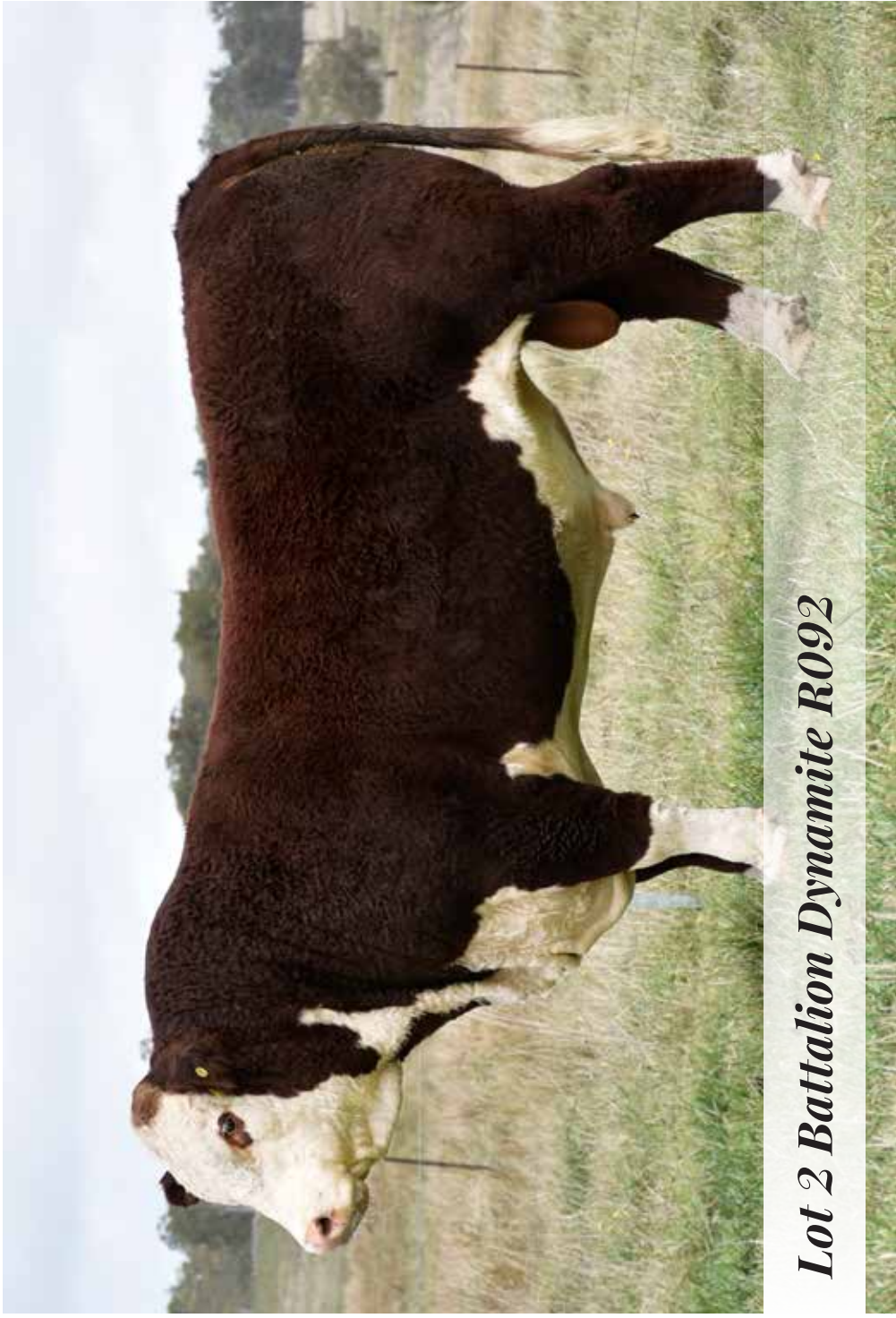


TOP PRICE BULL \$28,000 GLENWARRAH HEREFORDS



\$26,000 JM SMITH





Lot 2 Battalion Dynamite R092

*“Pleasure in the job puts perfection
in the work”* -Aristotle

