



BATTALION
HEREFORDS

CARA PARK

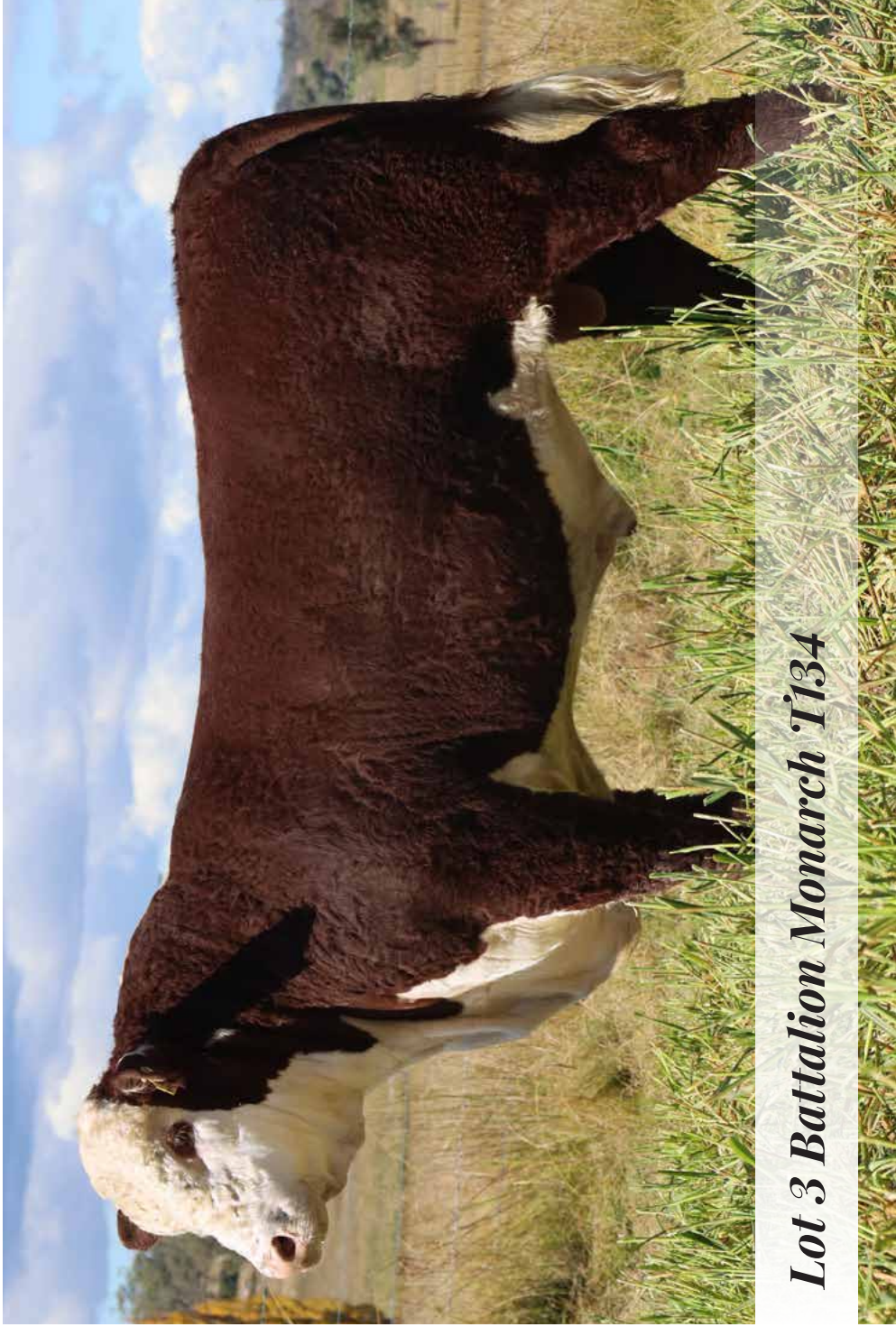
EST. **HEREFORDS** 1975



6th
Annual

Battalion & Cara Park Bull Sale
Mon 1st July 2024 - 1pm
Glen Innes Showground

 **STOCKLIVE ELITE**



Lot 3 Battalion Monarch T134

Sixth Annual Battalion & Cara Park Bull Sale

SALE MONDAY 1ST JULY 2024
Sale at 1pm, Inspection from 10am
Offering 30 Hereford Bulls

Complimentary lunch provided



Grant & Kylie Kneipp
T/AS Battalion Livestock
“Wattle Dale”
1259 Nine Mile Road
Dundee NSW 2370

Ph: 02 6734 4134
Mob: 0428 726 771
grant@battalion.com.au
www.battalion.com.au



CARA PARK
EST. **HEREFORDS** 1975

Graeme & Natalie Newnham
T/AS JE Newnham & Co
“Cara”
285 Reserve Creek Road
Myall Creek, Delungra NSW 2403

Ph: 02 6723 6446
Mob: 0428 236 446
g.n.newnham@gmail.com



AUCTIONEER
Paul Dooley
0458 662 646



rmanetwork. Accredited Member

AGENTS
Nathan Purvis 0427 324 078
Shad Bailey 0458 322 283
Ben McMahon 0474 591 318

HOW TO REGISTER with



Follow these easy steps to start bidding:



Visit www.stocklive.com.au using your desktop, laptop, iPad, iPhone or Android device. NO App required.



Select the **bid** icon beside the sale you wish to bid on.



If you're new, select **register**, and complete the form with all your details, **accept sale conditions**, select **create bidder registration**.



You will receive an email from StockLive. Select "**Confirm my bidding account**" to set your password and **accept Bidder Account Terms & Conditions** and Privacy Policy followed by **create my account**.



Congratulations! Your StockLive account has been created and your bid request is pending. You will be notified via email when your request to bid has been approved.



Existing users, follow steps 1 & 2, select login, enter your details followed by the **request to bid** icon beside the sale you wish to bid on and then **accept** the terms.



On Sale Day, follow steps 1 & 2, select **enter auction** to watch, listen and purchase when the sale is flashing **LIVE**.



Invoicing and delivery will be carried out as per your registration details by the respective Selling Agents.



1300 259 742

support@stocklive.com.au

www.stocklive.com.au



StockLive ABN 26 621 233 805
Level 12, 1 Eagle Street, Brisbane, QLD 4000

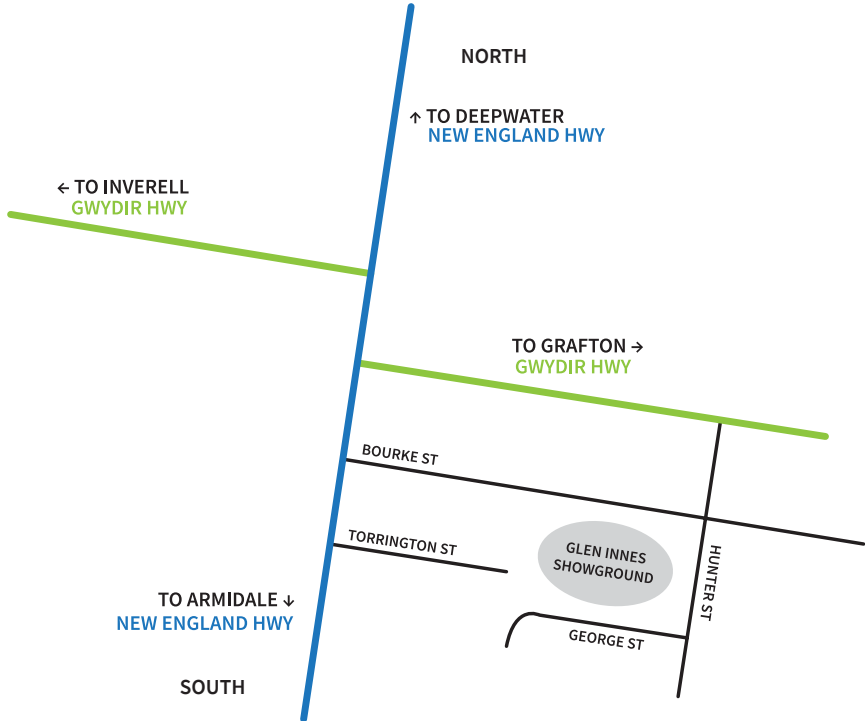
Sale Location:

Glen Innes Showground

Torrington St, Glen Innes NSW 2370

Entry to the showground is by Torrington Street gate

Truck entry via Hunter Street





Sale Information

INSPECTION

Bulls are available for inspection from 10am on sale day. We encourage inspection of both Battalion and Cara Park bulls on property prior to sale day by appointment. This gives you the opportunity to view the bulls in their natural environment and possibly inspect other animals in the pedigree to assist you in making your decision.

BUYERS REGISTRATION

The Buyers number system will be in operation. All prospective purchasers are asked to register prior to the sale.

ONLINE & PHONE BIDDING

If you are unable to attend on the day, the sale will be conducted in conjunction with StockLive Elite. Please refer to page 4 for further information. Phone bidding can be arranged through Colin Say & Co or your preferred agent.

VISITOR SAFETY

All of the sale bulls have been screened for temperament and are a quiet under normal circumstances, however ***Visitors enter the cattle pens at their own risk. Children/Prams must not enter the sale pens.***

DISABLED ACCESS

Disabled access is available at the showground and into the stands at the sale yards.

OUTSIDE AGENT REBATE

A rebate of 2% is offered to outside agents who introduce buyers to the selling agent in writing at least 24hrs prior to the sale and settle accounts on the purchaser's behalf within 7 days of the sale

GST: All animals are sold exclusive of GST. GST is added to your invoice.

TRANSPORT

Carriers will be available on sale day. If you wish to bring your own truck, we will accommodate the release of your animal at the completion of the auction. All animals need to be transported from the sale venue by 5pm Tuesday the 2nd of July 2024 unless prior arrangements have been made with the vendors. Formal possession, risk and expenses pass to the buyer at the fall of the hammer. We recommend having a quiet animal (e.g. cow, steer etc.) yarded and ready to greet your bull when he arrives home to minimise stress on the bull and help it adjust to its new environment.

INSURANCE

Bulls are a valuable and vulnerable asset to your business. We highly recommend insuring your new purchase at the completion of the sale. Insurance will be available on site.

Please bring your catalogue to the sale



Open Days

BATTALION HEREFORDS

TUESDAY 25TH JUNE ~ *NEW LOCATION*

“The Barracks”

289 Rangers Valley Rd

Dundee NSW 2370

9am - 4pm

CARA PARK HEREFORDS

WEDNESDAY 26TH JUNE *or any other day by arrangement.*

“Cara”

285 Reserve Creek Road

Myall Creek, Delungra NSW 2403

9am - 4pm

FIFTH ANNUAL SALE JULY 2023



\$16,000 Tummel Herefords



\$12,000 Gunya Herefords



Volume Buyers John Smith, Woodenbong & Jim Freeman, Tyringham. Prizes presented by Kurt Parker, Zoetis



Volume Buyers Peter & Margaret Hunt, Nanango
Prize presented by Kurt Parker, Zoetis



Herd Health

BATTALION – HERD HEALTH

All registered Battalion bulls have been sire verified and tested negative for Pestivirus.

They have received:

- Tick Fever Vaccine 23/11/23
- 2nd BEF Vaccine 7/12/23
- Nilzan 14/1/24
- 7 in 1 14/1/24
- Selvoin 14/1/24
- Brute 14/1/24
- Flukazole 11/4/24
- B12 11/4/24

CARA PARK – HERD HEALTH

All Cara Park bulls have been tested negative for Pestivirus

They have received:

- BEF Vaccine (3 day sickness) / Jan 2024
- 7 in 1 Booster / May 2024
- Vibrovax / May 2024
- Cydectin Pour-on

Hereford Group Breedplan

The Breedplan values in this catalogue were calculated in the 2022 Hereford Group Breedplan evaluation. Each reported trait shows an EBV (**estimated** breeding value) and its accuracy level. The EBV provides the current estimate of the bulls genetic merit for that trait, relative to the overall base for the Hereford breed. It indicates how its progeny should perform relative to those of other bulls in the breed. The accuracy of an EBV will be higher for traits with higher heritability and will increase as more performance information on an animal and its relatives become available. The Accuracy of an EBV is reported as a percentage. EBV's with higher accuracy will change less than EBV's of low accuracy when more performance records are analysed.

EBV Percentile table (abbreviated) for Hereford Animals born in 2022

Percentile Band	Weight Traits				Milk	Carcase Traits				
	BW	200	400	600	MILK	EMA	RIB	RUMP	RBY	IMF
Breed	+4.5	+36	+59	+83	+17	+4.5	+0.7	+0.9	+1.0	+0.8
Avg	KG	KG	KG	KG	KG	SQCM	MM	MM	%	%

Performance supplements for beef cattle



Deliver protein and minerals to optimise production

Improving results in beef cattle systems requires year-round nutrition planning. Performance Feeds provides convenient, custom nutrition supplements that optimises available forage, minerals, and protein for herd health and profitability:

Anipro

Liquid Supplements

- Molasses based liquid supplement
- Provides essential protein, minerals and vitamins
- Up to 27% improvement in forage intake
- Fully serviced PCAS approved program saves time and money

WeatherPro

- Waterproof and highly palatable loose lick
- Effectively manage mineral and vitamin deficiencies
- Suits all classes of grazing cattle
- Improve fertility, growth and immunity

Call 1800 300 593
performancefeeds.com.au



PERFORMANCE
FEEDS



Welcome to our 6th Annual Battalion & Cara Park Bull Sale to be held on Monday 1st July at 1pm EST at the Glen Innes Showgrounds. Inspections from 10am.

We are very pleased with the draft of bulls we have on offer for this year's sale. We continue to focus on selecting breed leading genetics that perform for us and can add financial gain for the commercial and stud breeder.

Stocklive again provide an online bidding platform as an option for those unable to attend the sale. Also, there will be agents available on sale day should you wish to bid via phone.

The bulls have all passed a Bull Breeding Soundness Evaluation by a certified Veterinarian.

We welcome and encourage on farm inspections by prior arrangement before sale day and are happy to discuss any animals at your convenience. Also we will be conducting on property open days, Battalion on Tuesday 25th June, 9am to 4pm & Cara Park on Wednesday 26th June, 9am to 4pm.

Looking forward to seeing you either before or at this year's sale.

Grant, Kylie, Graeme & Natalie

Specialist agricultural insurer Achmea Australia supports the Battalion & Cara Park Hereford Bull Sale

Connect with our local New England
Farm Insurance Specialist
Robert Butler at the sale.



1800 724 214
achmea.com.au



Farm Insurance

Robert Butler
Farm Insurance Specialist
servicing New England

Insurance issued by Achmea Schadeverzekeringen N.V. (Achmea) ABN 86 158 237 702 AFSL 433984. The information in this advertisement or article is general advice only and does not take into account your individual objectives, financial situation or needs (your personal circumstances). Before using this information to decide whether to purchase the insurance policy, you should consider your personal circumstances and the relevant Policy Wording available from the 'Downloads' section of our website www.achmea.com.au

Campbells Butchery

Open:
Monday - Friday
7am - 5.30pm
Saturday
7am - 12pm



Photo: WR Photography

193 Grey St Glen Innes

**Proud supporters of the
Battalion & Cara Park
Bull Sale**

HOME DELIVERY

Ph: 02 6732 3047



Our History

Four generations of proud Hereford breeders have called our family property home. “Wattle Dale”, 37kms North East of Glen Innes is situated in a cool climate area of the high country in Northern NSW. A location well suited for the production of quality Hereford cattle.

I have been a passionate Hereford breeder since my earliest memories as a child and purchased my first stud female (Emu Hills Cath S724) at the age of 14. In 2006 the Battalion stud was registered and further stud females were purchased from dispersal sales in its early years of establishment. Subsequent females including Moorlands Cherry Ripe W155, Courallie Constance V086, Courallie PR Christian Y312 and Smithston Silky Z231 became just some of the foundation females of the stud and to this day two of those cows have proven to be some of the most influential females within the Battalion herd. Our two most prolific female lines Constance and Cherry Ripe are still producing our top animals each year.

Realising how valuable some of our original females were proving to be, we decided to begin flushing our elite matrons with great results. This has allowed us to dramatically lift our bottom line. No expense was spared in developing our herd with a solid foundation of elite females. Purchasing the best on offer from dispersal sales and then flushing those individuals is the method that has dramatically accelerated our rate of improvement and subsequently been a major factor in delivering our strong sale results in recent years.

My wife Kylie and I now have a full house of cattle enthusiasts. Travis, Grace & Hailey all love cattle as much as we do and there are many debates on which cow is better. More so now than ever our business needs to be successful. Not only are we passionate about producing seedstock, it is our bread and butter. We pride ourselves on our customer service and back our genetics to deliver. We look forward to seeing you at the 6th annual Battalion & Cara Park Bull Sale.

Grant Kneipp



CARA PARK

EST. **HEREFORDS** 1975

Our History

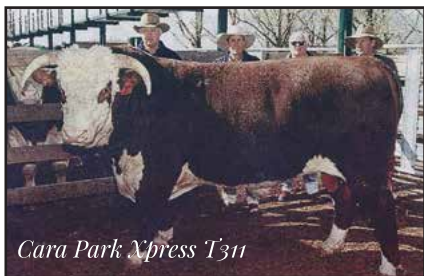
We have been breeding registered Herefords for 49 years for structural soundness doing ability and on farm performance.

The Cara Park Hereford stud was founded in 1975 with the purchase of a small group of cows & heifers from the famous Bexley stud. These were quickly followed by females from renowned studs such as Windsor, South Caramut, Hillcrest, Thornleigh & Alma Downs.

Windsor Maurice (Grand Champion 1972 Sydney Royal Show), after being retained for use by the Windsor Hereford stud was purchased as a foundation sire. Two years later (during the Beef price slump) in September 1978 we purchased Yarram Boswell at the age of 18 months from Yarram Park. Boswell played an important part in the early development of our stud. We used Boswell for nine joining seasons and sold him as an aged sire for almost double his original purchase price. Over the next few years sires used of note were Invernaion Yukon who sired Cara Park Impact selling at the 1985 Annual Glen Innes Hereford Bull Sale for top price in the unled section to Iolanthe Hereford stud. After securing a quarter share semen rights in Injemira Quest we commenced an annual AI & ET program, Quest left us with a terrific line of females. Also used in our AI program very successfully was Injemira Outback, a son Cara Park Playboy selling for top price at the 1992 Glen Innes Bull Sale to Bundarra Hereford stud.

Since then, over the years we have used the very best genetics available including Yarram Energizer P241 (top price 1996 Wodonga Bull Sale) sire of Cara Park Xpress T311 who sold for a new record price at the Glen Innes Bull Sale in 2000 to Charvel, Yavenvale & Bowmont Hereford Studs. Academy Columbus (Sydney Junior Champion 1993, Senior & Grand Champion 1994). Yarram Pompeii V055 used by AI, with sons selling to Amos Vale, Curracabark & Red Hill studs. Yavenvale Freedom Z008 (top price Yavenvale Annual Sale 2006), sire of Cara Park Freedom C727 selling at the Glen Innes Bull Sale 2009 to Foxforth Hereford Stud. These bulls were followed by two

more AI sires in Injemira Advance V093 sire of Cara Park Advance B631 selling at Glen Innes 2008 to Emu Holes Hereford stud. Also, Bowmont Storm C093, he has been one of the most influential sires used in our herd, leaving us with big roomy productive females. Mawarra Unique C041 (Grand Champion Wodonga 2009) sire of Cara Park Unique J324 the record selling bull at the



Cara Park Xpress T311



2015 Annual Glen Innes Hereford Bull Sale selling to the Ardno Hereford Stud, J324's dam is by Storm C093. Also, by Mawarra Unique C041 out of Storm C093 cows and selling for the second top price at their respective Annual Glen Innes Hereford Bull Sales, 2017 & 2018 was Cara Park Unique L581 selling to Avon View Hereford Stud & Cara Park Monarch M647 to Battalion Hereford Stud. The Unique / Storm cross has proven to be a very successful one, producing progeny with moderate birth weight, high growth and excellent carcase, these traits are major profit drivers for the beef producer. Cara Park Unique Q9028 another Unique / Storm cross son topped our 2021 sale, selling to Amos Vale Hereford Stud. At the 2013 Glen Innes Bull Sale we purchased the top priced bull in Battalion Buckshot G02, from his first crop of calves a son Cara Park Buckshot K490 sold in 2016 for the third top price of that sale to Hylands Hereford Stud.

Sires introduced in recent years are Glendan Park Knockout K160, (Junior & Grand Champion 2016 Wodonga Bull Sale). Talbalba Advance L131 (Top price Horn bull at the 2017 Annual Talbalba Bull sale) sire of Cara Park Advance R0007 topping the 2022 bull sale, selling to John and Maree Smith of Woodenbong. L131 has two very good sons catalogued for this year's sale. EDR Mojo M164 (Intermediate Champion & second top price at 2018 Wodonga Bull Sale).

In August 2020 we were fortunate to secure a new sire for our breeding program that we believe will advance our herd greatly on many fronts. Talbalba Emperor P043 represents the extremely rare combination of exceptional phenotype, performance, and carcase. We have used Emperor P043 extensively in the past three joining seasons. He has bred to our high expectations, producing a great run of 15 bulls being offered in this year's sale. Also, siring the top priced bull at the 2023 bull sale selling to the Tummel Hereford Stud.

Our Hereford cattle are run in conjunction with a merino sheep operation under commercial conditions. We are proud of our cattle and welcome enquiries and on property inspections.

We also look forward to seeing you on sale day

Kind Regards

Graeme, Natalie, Harry, Jack & Jane.



*Run with Deere.
Live the dream.*



**Equipment Sales,
Parts, Service
and field support**

LARGE TRACTORS
GATOR UTILITY VEHICLES
MOWERS
UTILITY TRACTORS
PLANTERS
SLASHERS & IMPLEMENTS



12 Swanbrook Rd Inverell NSW 2360
02 67282800 | RDOequipment.com.au

ENQUIRE TODAY

Karoonda Taupo

(AI)(H)



D.O.B.
11/03/2016

Rego No.
SKSM336

Reference Sire

PUTE WAQAR (H)

PUTE DUSKY D16 (H)

PUTE BABS 106 (H)

SIRE: LOCHARBURN GERRY 11004 (IMP NZL) (H)

LOCHARBURN HIGH VOLTAGE 0055 (H)

LOCHARBURN BRYONIA 02124 (H)

LOCHARBURN BRYONIA S10 (H)

CHARNOCK HAYMAKER (H)

WALLAN CREEK HAYMAKER D225 (H)

WALLAN CREEK NECKLET W126 (H)

DAM: KAROONDA MARITANA H201 (H)

COOTHARABA INDUS 2 (H)

KAROONDA MARITANA A093 (H)

KAROONDA MARITANA 225 (H)



BW	200	400	600	MCW	Milk	SS	CWT	EMA	Rib	Rump	RBV%	IMF%
+5.8	+33	+51	+79	+88	+12	+2.6	+49	+2.7	+0.5	+0.9	-0.1	+0.7
87%	82%	81%	81%	74%	67%	83%	68%	58%	61%	66%	58%	59%

INDEX: Southern Self-Replacing +\$76 Northern Self-Replacing +\$58 Southern Baldy Maternal +\$55 Northern Baldy Terminal +\$39

TRAITS OBSERVED: GL,BWT,200WT,400WT(x2),600WT,SS,FAT,EMA,IMF,Genomics **GENETIC CONDITION:** IEF,HYF,DLF,GGPLD,

NOTES: REFERENCE SIRE Taupo was purchased to introduce some outcross genetics that come from a herd with extra milk. He was extremely long and mobile with a naturally placid temperament.

Cara Park Monarch M647

(H)



D.O.B.
12/07/2016

Rego No.
JENM647

Reference Sire

GH DIFFERENCE BRITISHER 45L (IMP CAN) (H)

GH NEON 17N (IMP CAN) (H)

GH SIR SIMBA LASS 107K (H)

SIRE: MAWARRA UNIQUE C041 (AI) (H)

MAWARRA KAHLUA (AI) (H)

MAWARRA MINERVA 554 ET1 (AI) (ET) (H)

MAWARRA MINERVA 357 (H)

GLENDAN PARK STORM W134 (H)

BOWMONT STORM C093 (H)

BOWMONT MARITANA W168 (AI) (H)

DAM: CARA PARK WONDER L H220 (AI) (H)

CARA PARK PLAYBOY K672 ET1 (ET) (H)

CARA PARK WONDER LASS C714 (AI) (H)

CARA PARK WONDER L Z424 (H)



BW	200	400	600	MCW	Milk	SS	CWT	EMA	Rib	Rump	RBV%	IMF%
+5.1	+41	+78	+110	+96	+17	+2.0	+85	+7.7	-0.8	-0.5	+2.9	+0.6
87%	80%	81%	83%	75%	63%	86%	71%	64%	66%	70%	64%	65%

INDEX: Southern Self-Replacing +\$182 Northern Self-Replacing +\$168 Southern Baldy Maternal +\$181 Northern Baldy Terminal +\$137

TRAITS OBSERVED: BWT,200WT,400WT,600WT,SS,FAT,EMA,IMF,Genomics **GENETIC CONDITION:** HYF,IEF,DLF,GGPLD,POLL C-HH,

NOTES: REFERENCE SIRE Monarch was purchased for \$16,000 by Battalion Herefords in 2018. We selected him for his overall power and performance with the addition of perfect feet. He breeds curve bending growth with extremely good carcass merit. His progeny have been highly sought after by stud and commercial breeders. He consistently adds EMA and extra shape plus structural correctness.

Battalion Major Q070

(H)



D.O.B.
29/06/2019

Rego No.
BHEQ070

Reference Sire

GH NEON 17N (IMP CAN) (H)

MAWARRA UNIQUE C041 (AI) (H)

MAWARRA MINERVA 554 ET1 (AI) (ET) (H)

SIRE: CARA PARK MONARCH M647 (H)

BOWMONT STORM C093 (H)

CARA PARK WONDER L H220 (AI) (H)

CARA PARK WONDER LASS C714 (AI) (H)

KAROONDA LINGO (AI) (H)

SOUTH BOOROOK BOMBAY (H)

S BOOROOK BRIDESMAID D34 (AI) (H)

DAM: BATTALION DELIGHT L47 (H)

WALLAN CREEK ZEFFER D085 (H)

SOUTH BOOROOK DELIGHT H26 (AI) (H)

S BOOROOK DELIGHT W122 (H)



BW	200	400	600	MCW	Milk	SS	CWT	EMA	Rib	Rump	RBV%	IMF%
+6.5	+41	+76	+112	+115	+16	+0.9	+75	+4.5	-1.0	-0.9	+2.0	-0.2
70%	66%	66%	68%	59%	50%	69%	56%	49%	52%	56%	47%	52%

INDEX: Southern Self-Replacing +\$156 Northern Self-Replacing +\$133 Southern Baldy Maternal +\$167 Northern Baldy Terminal +\$132

TRAITS OBSERVED: BWT,600WT,SS,FAT,EMA,IMF,Genomics **GENETIC CONDITION:** DLF,HYF,IEF,

NOTES: REFERENCE SIRE Major Q070 sold to Alan Hewitt at our 2021 sale for \$20,000. He was a big powerful bull with exceptional width and strength of spin who also measured the largest EMA we have bred at 145sqcm.

Battalion Montana Q079 (AI)(ET)(H)



D.O.B.
03/11/2019

Rego No.
BHEQ079

Reference Sire

GH NEON 17N (IMP CAN) (H)

MAWARRA UNIQUE C041 (AI) (H)

MAWARRA MINERVA 554 ET1 (AI) (ET) (H)

SIRE: CARA PARK MONARCH M647 (H)

BOWMONT STORM C093 (H)

CARA PARK WONDER L H220 (AI) (H)

CARA PARK WONDER LASS C714 (AI) (H)

COOTHARABA MAGNUM (H)

MAWARRA VIRGINIAN (H)

MAWARRA CHERRY RIPE 263 (H)

DAM: BATTALION CHERRY RIPE 6 (AI) (H)

ONSLow SHARKA T019 (H)

MOORLANDS CHERRY RIPE W155 (H)

MOORLANDS CHERRY RIPE Q028 (H)



BW	200	400	600	MCW	Milk	SS	CWT	EMA	Rib	Rump	RBV%	IMF%
+4.8	+37	+74	+109	+96	+18	+1.7	+78	+5.9	-0.2	+0.3	+2.3	+0.3
75%	70%	71%	74%	65%	55%	76%	62%	55%	58%	61%	55%	57%

INDEX: Southern Self-Replacing +\$178 Northern Self-Replacing +\$161 Southern Baldy Maternal +\$181 Northern Baldy Terminal +\$135

TRAITS OBSERVED: BWT,400WT,600WT,SS,FAT,EMA,IMF,Genomics **GENETIC CONDITION:** DLF,HYF,IEF,

NOTES: REFERENCE SIRE Montana Q079 was used in herd before being offered at our 2022 sale where he sold to John & Maree Smith for \$24,000. Montana Q079 was a bull with plenty of shape and style with that stand-up commanding sire presence.

Bowmont Dom Lad G085

(AI)(H)



D.O.B.
12/03/2011

Rego No.
GRKG085

Reference Sire

BAR-OM 656 STD COMM LAD 256B (H)

STR STANDARD 256B DOM LAD 68L (H)

STR 27Z STANDARD DOMINO 46C (H)

SIRE: STANDARD 68L DOM LAD 38T (IMP CAN) (H)

STANDARD 16E RIBSTONE 64H (H)

K 64H RIBSTONE LADY 112N (H)

K 45D SUPER LADY 19H (H)

VENA PARK SHARKA (H)

ALKIRA VIKING (AI) (H)

COURALLIE MARIANNE R349 (H)

DAM: BOWMONT MARITANA Z486 (AI) (H)

BOWMONT QUEST P424 (AI) (H)

BOWMONT MARITANA 331 (H)

BOWMONT MARITANA 261 (AI) (H)



BW	200	400	600	MCW	Milk	SS	CWT	EMA	Rib	Rump	RBV%	IMF%
+7.9	+35	+55	+87	+55	+12	+2.3	+50	+5.5	+0.6	+0.5	+1.2	+2.5
96%	95%	94%	95%	87%	88%	92%	85%	74%	79%	84%	77%	83%

INDEX: Southern Self-Replacing +\$167 Northern Self-Replacing +\$145 Southern Baldy Maternal +\$146 Northern Baldy Terminal +\$92

TRAITS OBSERVED: 200WT,400WT,600WT,SS,FAT,EMA,IMF,Genomics **GENETIC CONDITION:** IEF,HYF,DLF,GGPHD,GG-PLD,POLL C-HH,

NOTES: REFERENCE SIRE Dom Lad G085 was used as an outcross AI sire, with great carcass attributes and high IMF.

Mawarra If Only Q264

(H)



D.O.B.
18/08/2019

Rego No.
HRPQ264

Reference Sire

CHURCHILL SENSATION 028X (H)

CHURCHILL A1 ET (IMP USA) (H)

CHURCHILL LADY 6109S ET (H)

SIRE: MAWARRA EMPEROR (AI) (ET) (H)

COOTHARABA MAGNUM (H)

MAWARRA MINERVA 816 (AI) (ET) (H)

MAWARRA MINERVA 554 ET1 (AI) (ET) (H)

INJEMIRA ADVANCE C085 (H)

DEVON COURT ADVANCE F052 (H)

DEVON COURT LIONESS A207 (H)

DAM: MAWARRA MINERVA 995 (H)

TALBALBA VALIANT (H)

MAWARRA MINERVA 823 (H)

MAWARRA MINERVA 574 ET1 (AI) (ET) (H)



BW	200	400	600	MCW	Milk	SS	CWT	EMA	Rib	Rump	RBV%	IMF%
+2.5	+22	+42	+69	+60	+25	+4.0	+43	+4.8	+1.0	+1.6	+0.6	+2.1
96%	92%	90%	89%	78%	61%	89%	77%	67%	71%	75%	67%	73%

INDEX: Southern Self-Replacing +\$121 Northern Self-Replacing +\$105 Southern Baldy Maternal +\$127 Northern Baldy Terminal +\$105

TRAITS OBSERVED: CE,BWT,200WT,600WT,SS,FAT,EMA,IMF,Genomics **GENETIC CONDITION:** DLF,HYF,IEF,POLL C-HH,

NOTES: REFERENCE SIRE Mawarra If Only Q264 was purchased by David Lyons in 2021 for \$103,000. We decided to use him for his low birth, high milk, IMF and Scrotal. He has bred true to type for us and his sons are proving to be safe heifer bull types.

Talbalba Advance L131

(H)



D.O.B.
03/10/2015

Rego No.
R5XL131

Reference Sire

INJEMIRA ADVANCE Z080 (AI) (H)

INJEMIRA ADVANCE C085 (H)

INJEMIRA MARINDA Y142 (H)

SIRE: DEVON COURT ADVANCE F052 (H)

GLENDAN PARK STORM W134 (H)

DEVON COURT LIONESS A207 (H)

DEVON COURT LIONESS U376 (H)

COOTHARABA ELGIN 2 (H)

COOTHARABA MAGNUM (H)

COOTHARABA PAULINE 279 (H)

DAM: TALBALBA CHOICE D058 (AI) (H)

TARCOMBE CAPTAIN (H)

TALBALBA CHOICE 77 (AI) (H)

TALBALBA CHOICE 38 (AI) (H)

CARA PARK
EST. **HEREFORDS** 1975

BW	200	400	600	MCW	Milk	SS	CWT	EMA	Rib	Rump	RBV%	IMF%
+8.9	+36	+56	+95	+104	+16	+1.1	+48	+4.8	-0.7	-1.2	+1.9	+1.2
95%	87%	88%	89%	79%	67%	87%	76%	64%	67%	71%	65%	66%

INDEX: Southern Self-Replacing +\$96 Northern Self-Replacing +\$70 Southern Baldy Maternal +\$85 Northern Baldy Terminal +\$65

TRAITS OBSERVED: CE,BWT,200WT,400WT,SS,FAT,EMA,IMF,Genomics **GENETIC CONDITION:** IEF,HYF,DLF,GGPLD,

NOTES: REFERENCE SIRE Purchased at the Talbalba On Property Bull Sale in 2017 for \$24,000. He is an attractive well balanced sire with a great structure and muscle pattern. He is breeding exceptionally well, producing our top price bull in 2022 for \$26,000 selling to John and Maree Smith of Woodenbong.

Talbalba Emperor P043

(AI)(H)



D.O.B.
16/08/2018

Rego No.
R5XP043

Reference Sire

CHURCHILL SENSATION 028X (H)

CHURCHILL A1 ET (IMP USA) (H)

CHURCHILL LADY 6109S ET (H)

SIRE: MAWARRA EMPEROR (AI) (ET) (H)

COOTHARABA MAGNUM (H)

MAWARRA MINERVA 816 (AI) (ET) (H)

MAWARRA MINERVA 554 ET1 (AI) (ET) (H)

INJEMIRA ADVANCE C085 (H)

DEVON COURT ADVANCE F052 (H)

DEVON COURT LIONESS A207 (H)

DAM: TALBALBA CHOICE K47 (H)

BOWMONT STORM C115 (AI) (H)

TALBALBA CHOICE F132 (H)

TALBALBA CHOICE 89 (AI) (H)

CARA PARK
EST. **HEREFORDS** 1975

BW	200	400	600	MCW	Milk	SS	CWT	EMA	Rib	Rump	RBV%	IMF%
+2.4	+34	+64	+92	+91	+19	+1.6	+65	+4.4	-0.3	-0.7	+1.5	+1.9
95%	90%	88%	89%	82%	68%	89%	76%	66%	70%	74%	66%	71%

INDEX: Southern Self-Replacing +\$145 Northern Self-Replacing +\$130 Southern Baldy Maternal +\$160 Northern Baldy Terminal +\$141

TRAITS OBSERVED: GL,CE,BWT,200WT,400WT,SS,FAT,EMA,IMF,DOC,Genomics **GENETIC CONDITION:** HYF,IEF,DLF,

NOTES: REFERENCE SIRE Purchased in partnership with Yarram Park Performance Genetics at the Talbalba Herefords 2020 bull sale for the top price of \$100,000. Emperor represents the extremely rare combination of exceptional phenotype, performance and carcase data. Very low Birth Weight (39kg), high growth and great carcase including Intramuscular Fat in the top 10% of the breed. We have used Emperor extensively in the past three joining seasons. He has bred to our high expectations, breeding these positive traits consistently into his progeny and siring the top priced bull at the 2023 bull sale selling for \$16,000 to the Tummel Hereford Stud.



Colin Say & Co Pty Ltd.

Licensed Auctioneers - Stock, Station & Real Estate Agents

118 Wentworth Street Glen Innes NSW 2370

(02) 6732 1266 www.colinsay.com.au office@colinsay.com.au

PERSONALISED SERVICE LEADING BY RESULTS

Est. 1958

- »Regular Cattle Sales
- »Regular Prime Lamb & Sheep Sales
- »Stud Stock Sales
- »Selling to Feedlots
- »Consignment of Stock
- »Market Appraisals
- »Auctions Plus
- »Rural Property Sales

Nathan Purvis 0427 324 078 Ben McMahon 0474 591 318
Shad Bailey 0458 322 283



Colin Say & Co. Pty Ltd

rmanetwork.

Accredited Member



1

Battalion Major T119

(H)**D.O.B.**
30/04/2022**Rego No.**
BHET119**Account.**
Battalion
Livestock**PURCHASER** **PRICE \$**

MAWARRA UNIQUE C041 (AI) (H)

CARA PARK MONARCH M647 (H)

CARA PARK WONDER L H220 (AI) (H)

SIRE: BATTALION MAJOR Q070 (H)

SOUTH BOOROOK BOMBAY (H)

BATTALION DELIGHT L47 (H)

SOUTH BOOROOK DELIGHT H26 (AI) (H)

YARRAM UNIQUE F181 (H)

COURALLIE KODIAK K592 (AI) (H)

COURALLIE Z3 PRUDENCE F214 (AI) (H)

DAM: DUNDEE PATTIE 9 N177 (H)

ECHO PARK WARATAH (AI) (H)

ECHO PARK PATTIE 4 (H)

ECHO PARK PATTIE (H)



BW	200	400	600	MCW	Milk	SS	CWT	EMA	Rib	Rump	RBV%	IMF%
+5.9	+37	+60	+87	+88	+17	+1.2	+55	+3.5	-0.6	-0.6	+1.2	+0.1
64%	62%	61%	62%	53%	45%	61%	49%	41%	46%	49%	39%	46%

INDEX: Southern Self-Replacing +\$112 Northern Self-Replacing +\$92 Southern Baldy Maternal +\$116 Northern Baldy Terminal +\$92**TRAITS OBSERVED:** 600WT,SS,FAT,EMA,IMF,Genomics**NOTES:** We kick off the 2024 draft with a bull with a tonne of performance and capacity. His sire Major Q070 had the largest EMA we have bred at 145sqcm and sold for \$20,000 in our 2022 sale.

2

Battalion Davenport

(AI)(H)**D.O.B.**
14/05/2022**Rego No.**
BHET126**Account.**
Battalion
Livestock

PURCHASER..... PRICE \$.....

STR STANDARD 256B DOM LAD 68L (H)

STANDARD 68L DOM LAD 38T (IMP CAN) (H)

K 64H RIBSTONE LADY 112N (H)

SIRE: BOWMONT DOM LAD G085 (AI) (H)

ALKIRA VIKING (AI) (H)

BOWMONT MARITANA Z486 (AI) (H)

BOWMONT MARITANA 331 (H)

SOUTH BOOROOK BOMBAY (H)

BATTALION BLACK HAWK K7 (H)

BATTALION CHERRY RIPE 6 (AI) (H)

DAM: BATTALION CONSTANCE N066 (AI) (H)

BATTALION ICELAND (H)

BATTALION CONSTANCE 4 (H)

BATTALION CONSTANCE 42 (H)



BW	200	400	600	MCW	Milk	SS	CWT	EMA	Rib	Rump	RBV%	IMF%
+5.9	+33	+55	+89	+67	+18	+1.7	+53	+4.3	+0.1	+0.3	+1.7	+0.8
69%	68%	67%	69%	61%	58%	73%	59%	51%	54%	58%	52%	56%

INDEX: Southern Self-Replacing +\$155 Northern Self-Replacing +\$135 Southern Baldy Maternal +\$156 Northern Baldy Terminal +\$107**TRAITS OBSERVED:** 600WT,SS,FAT,EMA,IMF,Genomics

NOTES: Davenport is a thick, deep bodied bull with a top performing maternal pedigree behind him. His dam is proving to be among our better breeders and his grand dam was one of the best we have bred.

3

Battalion Monarch T134

(H)**D.O.B.**
04/07/2022**Rego No.**
BHET134**Account.**
Battalion
Livestock**PURCHASER** **PRICE \$**

GH NEON 17N (IMP CAN) (H)

MAWARRA UNIQUE C041 (AI) (H)

MAWARRA MINERVA 554 ET1 (AI) (ET) (H)

SIRE: CARA PARK MONARCH M647 (H)

BOWMONT STORM C093 (H)

CARA PARK WONDER L H220 (AI) (H)

CARA PARK WONDER LASS C714 (AI) (H)

SOUTH BOOROOK CRACOV (H)

SUGARLOAF JELLY BEAN A220 (H)

SUGARLOAF M-JEWEL W121 (AI) (H)

DAM: DUNDEE AMELIA 3 (H)

EMU HOLES EASY A32 (H)

ECHO PARK AMELIA (H)

EMU HOLES AMELIA C333 (H)



BW	200	400	600	MCW	Milk	SS	CWT	EMA	Rib	Rump	RBV%	IMF%
+6.2	+42	+77	+109	+102	+9	+2.1	+79	+6.5	-0.7	-0.5	+2.5	+0.9
71%	64%	65%	70%	59%	49%	71%	55%	45%	49%	53%	44%	49%

INDEX: Southern Self-Replacing +\$170 Northern Self-Replacing +\$157 Southern Baldy Maternal +\$160 Northern Baldy Terminal +\$121**TRAITS OBSERVED:** BWT,600WT,SS,FAT,IMF,Genomics

NOTES: Monarch T134 is one of our top picks for this year. A sound structured bull with great eye appeal. We love the natural balance and conformation of this bull with the bonus of being naturally very quiet and easy to handle.

4

Battalion Bombay T122 (AI)(ET)(H)



D.O.B.
01/05/2022

Rego No.
BHET122

Account.
Battalion
Livestock

PURCHASER **PRICE \$**

REEDY CREEK DEBONAIR 206 (H)

KAROONDA LINGO (AI) (H)

KAROONDA MINERVA 89 (H)

SIRE: SOUTH BOOROOK BOMBAY (H)

COURALLIE ASCOT (AI) (H)

S BOOROOK BRIDESMAID D34 (AI) (H)

S BOOROOK BRIDESMAID Z18 (H)

COOTHARABA MAGNUM (H)

MAWARRA VIRGINIAN (H)

MAWARRA CHERRY RIPE 263 (H)

DAM: BATTALION CHERRY RIPE 6 (AI) (H)

ONSLow SHARKA T019 (H)

MOORLANDS CHERRY RIPE W155 (H)

MOORLANDS CHERRY RIPE Q028 (H)



BW	200	400	600	MCW	Milk	SS	CWT	EMA	Rib	Rump	RBV%	IMF%
+8.4	+44	+77	+119	+133	+13	+0.3	+68	+2.3	-1.4	-1.5	+1.9	-0.7
71%	70%	70%	71%	63%	58%	70%	61%	54%	57%	60%	52%	57%

INDEX: Southern Self-Replacing +\$146 Northern Self-Replacing +\$122 Southern Baldy Maternal +\$166 Northern Baldy Terminal +\$133

TRAITS OBSERVED: BWT, Genomics

NOTES: Plenty of growth and performance here! Bombay T122 has a pedigree that has proven itself time and time again. A larger framed version of his brother Battalion Blackhawk K7.

5

Battalion Monarch T129

(H)

D.O.B.
16/06/2022

Rego No.
BHET129

Account.
Battalion
Livestock

PURCHASER **PRICE \$**

GH NEON 17N (IMP CAN) (H)

MAWARRA UNIQUE C041 (AI) (H)

MAWARRA MINERVA 554 ET1 (AI) (ET) (H)

SIRE: CARA PARK MONARCH M647 (H)

BOWMONT STORM C093 (H)

CARA PARK WONDER L H220 (AI) (H)

CARA PARK WONDER LASS C714 (AI) (H)

GLENDAN PARK EMPIRE E002 (AI) (ET) (H)

SUGARLOAF HAYMAKER H126 (AI) (H)

SUGARLOAF LAST DAY D41 (AI) (H)

DAM: BATTALION SILKY N067 (AI) (H)

SMITHSTON YOU BEAUT (H)

BATTALION SILKY 3 (AI) (H)

SMITHSTON SILKY Z231 (H)



BW	200	400	600	MCW	Milk	SS	CWT	EMA	Rib	Rump	RBV%	IMF%
+6.4	+42	+73	+105	+106	+15	+1.9	+77	+6.8	-0.9	-0.7	+2.9	+0.1
71%	64%	64%	68%	59%	50%	71%	55%	47%	50%	54%	48%	51%

INDEX: Southern Self-Replacing +\$155 Northern Self-Replacing +\$142 Southern Baldy Maternal +\$154 Northern Baldy Terminal +\$119

TRAITS OBSERVED: BWT,600WT,SS,FAT,EMA,IMF,Genomics

NOTES: Here is another great Monarch son. This bull is really hitting his straps and developing into a big mobile young sire. This is a bull we believe will continue to get better and better with maturity.

6

Battalion Mojo T124

(AI)(ET)(H)**D.O.B.**
08/05/2022**Rego No.**
BHET124**Account.**
Battalion
Livestock**PURCHASER** **PRICE \$**

MAWARRA UNIQUE C041 (AI) (H)

YARRAM UNIQUE F107 (AI) (H)

YARRAM BLESSING A187 (H)

SIRE: EDR MOJO (H)

CL 1 DOMINO 9121W 1ET (IMP USA) (AI) (ET) (H)

EDR GOLDEN J133 (AI) (H)

EDR GOLDEN C702 (AI) (H)

SOUTH BOOROOK BOMBAY (H)

BATTALION BLACK HAWK K7 (H)

BATTALION CHERRY RIPE 6 (AI) (H)

DAM: THORNLEIGH H K7 JULIET N146 (AI) (H)

THORNLEIGH TRAIL BLAZER E341 (AI) (H)

THORNLEIGH 341 JULIET J261 (H)

THORNLEIGH 209 JULIET G148 (H)

**DAM**

BW	200	400	600	MCW	Milk	SS	CWT	EMA	Rib	Rump	RBV%	IMF%
+4.1	+26	+46	+66	+61	+23	+1.8	+43	+4.5	-0.1	+0.2	+1.5	+0.0
69%	68%	67%	69%	60%	55%	72%	58%	50%	53%	57%	50%	55%

INDEX: Southern Self-Replacing +\$112 Northern Self-Replacing +\$97 Southern Baldy Maternal +\$127 Northern Baldy Terminal +\$100**TRAITS OBSERVED:** 600WT,SS,FAT,EMA,IMF,Genomics

NOTES: Mojo T124 was one of the standout calves at birth. He is very long and mobile with plenty of milk in his pedigree. We purchased his dam Thornleigh Juliet N146 at the Thornleigh dispersal as our pick of the female offering and she is still one our favourites in our herd.

7

Battalion Montana T132

(H)**D.O.B.**
02/07/2022**Rego No.**
BHET132**Account.**
Battalion
Livestock**PURCHASER** **PRICE \$**

MAWARRA UNIQUE C041 (AI) (H)

CARA PARK MONARCH M647 (H)

CARA PARK WONDER L H220 (AI) (H)

SIRE: BATTALION MONTANA Q079 (AI) (ET) (H)

MAWARRA VIRGINIAN (H)

BATTALION CHERRY RIPE 6 (AI) (H)

MOORLANDS CHERRY RIPE W155 (H)

HAVEN WIZARD (DH) (IMP GBR) (H)

BOWMONT WIZARD C076 (AI) (H)

BOWMONT L MINERVA X208 (AI) (H)

DAM: BOWMONT QUEEN F024 (AI) (H)

GLENDAN PARK STORM W134 (H)

BOWMONT QUEEN C117 (H)

BOWMONT QUEEN X253 (H)



BW	200	400	600	MCW	Milk	SS	CWT	EMA	Rib	Rump	RBY%	IMF%
+5.8	+36	+66	+98	+89	+13	+2.9	+62	+4.5	-0.2	-0.1	+1.3	+0.4
70%	63%	64%	69%	60%	50%	72%	55%	46%	50%	54%	48%	50%

INDEX: Southern Self-Replacing +\$150 Northern Self-Replacing +\$132 Southern Baldy Maternal +\$154 Northern Baldy Terminal +\$118**TRAITS OBSERVED:** BWT,600WT,SS,FAT,EMA,IMF,Genomics

NOTES: We sold this bulls sire Montana Q079 in 2022 for \$24,000 to longtime supporters John & Maree Smith. This bull is also a maternal brother to Battalion Maximus R084 who sold for the sale top price of \$28,000 to Glenwarrah Herefords in 2022.

GET **NEW**

TWICE AS TOUGH

ON WORMS



DECTOMAX + LEVAMISOLE

DECTOMAX^V
doramectin and levamisole injection



**NORTH WEST
PETROLEUM**

Servicing the North West Area

Farm Fuel Deliveries

Gulf Western Lubricants

Shell Lubricants

Valvoline Lubricants

Farm Produce

Gas - Phone Credit - Groceries

Truck, Car & 4WD Tyres



26 Inverell Street, Delungra NSW 2403
0267 248 484 | 0428 637 091 Brian | 0448 498 516 Mitch
accounts@northwestpetroleum.com.au

8 *Cara Park Emperor T2068* (H)



D.O.B.
24/07/2022

Rego.No.
JENT2068

Account.
JE Newnham & Co

PURCHASER **PRICE \$**

CHURCHILL A1 ET (IMP USA) (H)
MAWARRA EMPEROR (AI) (ET) (H)
MAWARRA MINERVA 816 (AI) (ET) (H)

SIRE: TALBALBA EMPEROR P043 (AI) (H)
DEVON COURT ADVANCE F052 (H)

TALBALBA CHOICE K47 (H)
TALBALBA CHOICE F132 (H)
GLENDAN PARK STORM W134 (H)
BOWMONT STORM C093 (H)
BOWMONT MARITANA W168 (AI) (H)

DAM: CARA PARK TREASURE K430 (AI) (H)
YARRAM STAR GENERAL W251 (H)
CARA PARK TREASURE F011 (AI) (H)
CARA PARK TREASURE W122 (H)

CARA PARK
EST. **HEREFORDS** 1975

BW	200	400	600	MCW	Milk	SS	CWT	EMA	Rib	Rump	RBV%	IMF%
+5.7	+41	+73	+111	+117	+15	+2.2	+66	+2.4	-1.6	-1.9	+1.6	+0.2
75%	69%	68%	71%	63%	54%	77%	58%	50%	53%	57%	51%	53%

INDEX: Southern Self-Replacing +\$125 Northern Self-Replacing +\$98 Southern Baldy Maternal +\$114 Northern Baldy Terminal +\$93

TRAITS OBSERVED: BWT,200WT,400WT,600WT,SS,FAT,EMA,IMF,Genomics

NOTES: An attractive well structured bull with good length, width and depth of body. One of the heavier bulls in the draft. Moderate birth and very high growth. In the top 20% 200 Day Weight, top 10% 400 Day Weight, top 5% 600 Day Weight and the top 20% RBV. Out of a good Storm C093 cow.

9

Cara Park Emperor T2040 (AI)(H)

**D.O.B.**
16/07/2022**Rego No.**
JENT2040**Account.**
JE Newnham & Co**PURCHASER** **PRICE \$**

CHURCHILL A1 ET (IMP USA) (H)

MAWARRA EMPEROR (AI) (ET) (H)

MAWARRA MINERVA 816 (AI) (ET) (H)

SIRE: TALBALBA EMPEROR P043 (AI) (H)

DEVON COURT ADVANCE F052 (H)

TALBALBA CHOICE K47 (H)

TALBALBA CHOICE F132 (H)

WARRINGA GOOGLE G23 (H)

GLENDAN PARK KNOCKOUT K160 (ET) (H)

GLENDAN PARK LASS G013 (AI) (H)

DAM: CARA PARK CURLEY Q9003 (H)

MAWARRA UNIQUE C041 (AI) (H)

CARA PARK CURLEY J303 (AI) (H)

CARA PARK CURLEY F021 (AI) (H)

CARA PARKEST. **HEREFORDS** 1975

BW	200	400	600	MCW	Milk	SS	CWT	EMA	Rib	Rump	RBV%	IMF%
+7.0	+42	+73	+109	+114	+16	+1.4	+68	+4.5	-1.4	-2.0	+2.8	+0.6
74%	69%	69%	72%	63%	53%	77%	58%	49%	52%	56%	49%	53%

INDEX: Southern Self-Replacing +\$136 Northern Self-Replacing +\$115 Southern Baldy Maternal +\$132 Northern Baldy Terminal +\$107**TRAITS OBSERVED:** GL,BWT,200WT,400WT,600WT,SS,FAT,EMA,IMF,Genomics**NOTES:** A stylish well structured bull with a soft skin and a heap of length and thickness. Top 20% for 200 day weight, top 10% 400 day wt., top 5% 600 day wt. and the top 1% Net Feed Efficiency.

10

Cara Park Emperor T2076 (H)



D.O.B.
25/07/2022

Rego No.
JENT2076

Account.
JE Newnham & Co

PURCHASER **PRICE \$**

CHURCHILL A1 ET (IMP USA) (H)

MAWARRA EMPEROR (AI) (ET) (H)

MAWARRA MINERVA 816 (AI) (ET) (H)

SIRE: TALBALBA EMPEROR P043 (AI) (H)

DEVON COURT ADVANCE F052 (H)

TALBALBA CHOICE K47 (H)

TALBALBA CHOICE F132 (H)

GH NEON 17N (IMP CAN) (H)

MAWARRA UNIQUE C041 (AI) (H)

MAWARRA MINERVA 554 ET1 (AI) (ET) (H)

DAM: CARA PARK ALETHEA J318 (AI) (H)

BOWMONT STORM C093 (H)

CARA PARK ALETHEA F014 (AI) (H)

CARA PARK ALETHEA B619 (AI) (H)

CARA PARK

EST. **HEREFORDS** 1975

BW	200	400	600	MCW	Milk	SS	CWT	EMA	Rib	Rump	RBV%	IMF%
+1.0	+28	+57	+77	+76	+12	+1.8	+56	+4.0	-0.8	-1.1	+1.7	+1.1
75%	70%	69%	72%	64%	56%	78%	59%	51%	54%	58%	51%	55%

INDEX: Southern Self-Replacing +\$133 Northern Self-Replacing +\$124 Southern Baldy Maternal +\$143 Northern Baldy Terminal +\$119

TRAITS OBSERVED: BWT,200WT,400WT,600WT,SS,FAT,EMA,IMF,Genomics

NOTES: Low Birth Weight would be suitable for heifer joining. A very attractive well structured bull with plenty of length and thickness with low birth and good growth, traits that are on both sides of his pedigree. Well balanced data, with his low Birth Weight being in the top 10% of the breed on Breedplan, top 15% RBV, top 1% Net Feed Efficiency. Out of a very good Unique C041 cow that has produced a full brother retained in the herd.

11

Cara Park Emperor T2063 (H)



D.O.B.
23/07/2022

Rego.No.
JENT2063

Account.
JE Newnham & Co

PURCHASER **PRICE \$**

CHURCHILL A1 ET (IMP USA) (H)

MAWARRA EMPEROR (AI) (ET) (H)

MAWARRA MINERVA 816 (AI) (ET) (H)

SIRE: TALBALBA EMPEROR P043 (AI) (H)

DEVON COURT ADVANCE F052 (H)

TALBALBA CHOICE K47 (H)

TALBALBA CHOICE F132 (H)

GH NEON 17N (IMP CAN) (H)

MAWARRA UNIQUE C041 (AI) (H)

MAWARRA MINERVA 554 ET1 (AI) (ET) (H)

DAM: CARA PARK PEARL M633 (H)

BOWMONT STORM C093 (H)

CARA PARK PEARL H227 (AI) (H)

CARA PARK PEARL C707 (AI) (H)

CARA PARK

EST. **HEREFORDS** 1975

BW	200	400	600	MCW	Milk	SS	CWT	EMA	Rib	Rump	RBV%	IMF%
+2.1	+32	+62	+99	+76	+20	+2.1	+76	+6.7	+0.3	+0.5	+1.8	+1.7
75%	69%	69%	72%	63%	55%	78%	59%	51%	54%	58%	51%	55%

INDEX: Southern Self-Replacing +\$182 Northern Self-Replacing +\$164 Southern Baldy Maternal +\$178 Northern Baldy Terminal +\$135

TRAITS OBSERVED: BWT,200WT,400WT,600WT,SS,FAT,EMA,IMF,Genomics

NOTES: Larger framed bull with excellent Breedplan Data across the board, with low Birth Weight in the top 15%, high growth in the top 20% 600 Day Weight, top 10% EMA, top 15% RBV and IMF, top 1% Net Feed Efficiency. Out of a very good Unique C041 cow that produced a full brother retained in the herd.

12**Cara Park Emperor T2071 (TW)(H)****D.O.B.**
24/07/2022**Rego No.**
JENT2071**Account.**
JE Newnham & Co**PURCHASER** **PRICE \$**

CHURCHILL A1 ET (IMP USA) (H)

MAWARRA EMPEROR (AI) (ET) (H)

MAWARRA MINERVA 816 (AI) (ET) (H)

SIRE: TALBALBA EMPEROR P043 (AI) (H)

DEVON COURT ADVANCE F052 (H)

TALBALBA CHOICE K47 (H)

TALBALBA CHOICE F132 (H)

GH NEON 17N (IMP CAN) (H)

MAWARRA UNIQUE C041 (AI) (H)

MAWARRA MINERVA 554 ET1 (AI) (ET) (H)

DAM: CARA PARK CURLEY K468 (H)

CARA PARK PLAYBOY K672 ET1 (ET) (H)

CARA PARK CURLEY C709 (AI) (H)

CARA PARK CURLEY Z445 (H)

CARA PARKEST. **HEREFORDS** 1975

BW	200	400	600	MCW	Milk	SS	CWT	EMA	Rib	Rump	RBV%	IMF%
+4.3	+40	+77	+113	+115	+18	+1.3	+82	+5.8	-1.1	-1.6	+2.8	+1.1
73%	69%	68%	69%	61%	54%	68%	57%	50%	53%	56%	47%	54%

INDEX: Southern Self-Replacing +\$175 Northern Self-Replacing +\$158 Southern Baldy Maternal +\$189 Northern Baldy Terminal +\$156**TRAITS OBSERVED:** BWT,200WT,400WT,600WT,SS,FAT,EMA,IMF,Genomics

NOTES: Low Birth Weight would be suitable for heifer joining. A medium framed bull with good body capacity, one of the heavier bulls in the draft and he carries the very desirable traits of low birth weight and high growth. Top 5% 400 and 600 Day Weight, top 20% EMA, top 1% RBV, top 1% Net Feed Efficiency. Out of a good old Unique C041 cow.

13

Cara Park Emperor T2114

(H)**D.O.B.**

18/08/2022

Rego No.

JENT2114

Account.

JE Newnham & Co

PURCHASER..... PRICE \$.....

CHURCHILL A1 ET (IMP USA) (H)

MAWARRA EMPEROR (AI) (ET) (H)

MAWARRA MINERVA 816 (AI) (ET) (H)

SIRE: TALBALBA EMPEROR P043 (AI) (H)

DEVON COURT ADVANCE F052 (H)

TALBALBA CHOICE K47 (H)

TALBALBA CHOICE F132 (H)

GLENDAN PARK STORM W134 (H)

BOWMONT STORM C093 (H)

BOWMONT MARITANA W168 (AI) (H)

DAM: CARA PARK ALETHEA J305 (AI) (H)

INJEMIRA ADVANCE V093 (H)

CARA PARK ALETHEA C719 (AI) (H)

CARA PARK ALETHEA Y374 (H)

CARA PARKEST. **HEREFORDS** 1975

DAM

BW	200	400	600	MCW	Milk	SS	CWT	EMA	Rib	Rump	RBV%	IMF%
+4.8	+37	+69	+104	+87	+16	+2.2	+65	+4.3	-0.2	-0.2	+0.9	+2.1
74%	69%	69%	72%	64%	55%	77%	59%	51%	54%	58%	51%	55%

INDEX: Southern Self-Replacing +\$156 Northern Self-Replacing +\$132 Southern Baldy Maternal +\$157 Northern Baldy Terminal +\$126**TRAITS OBSERVED:** BWT,200WT,400WT,600WT,SS,FAT,EMA,IMF,Genomics

NOTES: The second youngest bull in our draft. Great muscle pattern on this bull retaining good body length and shoulder, a very similar type to his maternal brother Unique Q9028 selling in 2021 for \$21,000 to Amos Vale Hereford Stud where he has bred very well. Exceptional performance data. Very high Intramuscular Fat in the top 5% of the breed on Breedplan, top 20% 400 Day Weight, top 10% 600 Day Weight. Out of a very good Storm C093 cow that has one of the top 2023 drop weaner bulls.³⁹

14

Cara Park Emperor T2105

(H)**D.O.B.**
08/08/2022**Rego No.**
JENT2105**Account.**
JE Newnham & Co**PURCHASER** **PRICE \$**

CHURCHILL A1 ET (IMP USA) (H)

MAWARRA EMPEROR (AI) (ET) (H)

MAWARRA MINERVA 816 (AI) (ET) (H)

SIRE: TALBALBA EMPEROR P043 (AI) (H)

DEVON COURT ADVANCE F052 (H)

TALBALBA CHOICE K47 (H)

TALBALBA CHOICE F132 (H)

GLENDAN PARK STORM W134 (H)

BOWMONT STORM C093 (H)

BOWMONT MARITANA W168 (AI) (H)

DAM: CARA PARK CURLEY G108 (AI) (H)

INJEMIRA ADVANCE V093 (H)

CARA PARK CURLEY C706 (AI) (H)

CARA PARK CURLEY Z427 (AI) (H)

CARA PARKEST. **HEREFORDS** 1975

BW	200	400	600	MCW	Milk	SS	CWT	EMA	Rib	Rump	RBV%	IMF%
+3.1	+30	+52	+81	+76	+19	+1.1	+52	+3.5	+0.3	+0.7	+0.7	+1.0
75%	69%	69%	72%	64%	56%	78%	60%	52%	55%	58%	52%	55%

INDEX: Southern Self-Replacing +\$105 Northern Self-Replacing +\$88 Southern Baldy Maternal +\$111 Northern Baldy Terminal +\$95**TRAITS OBSERVED:** BWT,200WT,400WT,600WT,SS,FAT,EMA,IMF,Genomics

NOTES: Very good bull every way you look at him. Good Breedplan data across the board. Out of a good old Storm C093 cow that produced our top priced bull in 2017 for \$16,000 selling to Avon View Hereford Stud.

15

Cara Park Emperor T2052 (H)



D.O.B.
20/07/2022

Rego No.
JENT2052

Account.
JE Newnham & Co

PURCHASER **PRICE \$**

CHURCHILL A1 ET (IMP USA) (H)

MAWARRA EMPEROR (AI) (ET) (H)

MAWARRA MINERVA 816 (AI) (ET) (H)

SIRE: TALBALBA EMPEROR P043 (AI) (H)

DEVON COURT ADVANCE F052 (H)

TALBALBA CHOICE K47 (H)

TALBALBA CHOICE F132 (H)

BANEMORE POMPEII T036 (AI) (H)

YAVENVALE FREEDOM (H)

YAVENVALE MELLOW U314 (H)

DAM: CARA PARK PEARL M690 (H)

BOWMONT STORM C093 (H)

CARA PARK PEARL G104 (AI) (H)

CARA PARK PEARL Z482 (H)

CARA PARK

EST. **HEREFORDS** 1975

BW	200	400	600	MCW	Milk	SS	CWT	EMA	Rib	Rump	RBV%	IMF%
+4.9	+35	+61	+89	+98	+14	+2.6	+55	+2.1	-0.5	-0.4	+0.7	+0.6
74%	69%	68%	71%	62%	54%	76%	58%	49%	52%	56%	49%	52%

INDEX: Southern Self-Replacing +\$103 Northern Self-Replacing +\$85 Southern Baldy Maternal +\$99 Northern Baldy Terminal +\$85

TRAITS OBSERVED: BWT,200WT,400WT,600WT,SS,FAT,EMA,IMF,Genomics

NOTES: An easy doing bull with plenty of volume and thickness throughout. Out of a big roomy Freedom cow.

16

Cara Park Emperor T2072 (H)

**D.O.B.**
24/07/2022**Rego No.**
JENT2072**Account.**
JE Newnham & Co**PURCHASER** **PRICE \$**

CHURCHILL A1 ET (IMP USA) (H)

MAWARRA EMPEROR (AI) (ET) (H)

MAWARRA MINERVA 816 (AI) (ET) (H)

SIRE: TALBALBA EMPEROR P043 (AI) (H)

DEVON COURT ADVANCE F052 (H)

TALBALBA CHOICE K47 (H)

TALBALBA CHOICE F132 (H)

RED HILL BLUE BOY (H)

BATTALION BUCKSHOT (AI) (ET) (H)

COURALLIE CONSTANCE V086 (H)

DAM: CARA PARK PEARL M621 (H)

YAVENVALE FREEDOM (H)

CARA PARK PEARL J360 (H)

CARA PARK PEARL C701 (AI) (H)

CARA PARKEST. **HEREFORDS** 1975

BW	200	400	600	MCW	Milk	SS	CWT	EMA	Rib	Rump	RBV%	IMF%
+6.8	+42	+66	+98	+103	+16	+1.1	+56	+2.5	-0.6	-1.0	+0.6	+1.5
74%	68%	68%	71%	62%	52%	76%	57%	48%	51%	55%	49%	52%

INDEX: Southern Self-Replacing +\$120 Northern Self-Replacing +\$97 Southern Baldy Maternal +\$132 Northern Baldy Terminal +\$115**TRAITS OBSERVED:** BWT,200WT,400WT,600WT,SS,FAT,EMA,IMF,Genomics**NOTES:** Great outlook on this bull, good skin and hair, volume and depth. Top 20% 200 and 600 Day Weights and IMF.

17**Cara Park Advance T2059****(H)****D.O.B.**

21/07/2022

Rego No.

JENT2059

Account.

JE Newnham & Co

PURCHASER..... PRICE \$.....

INJEMIRA ADVANCE C085 (H)

DEVON COURT ADVANCE F052 (H)

DEVON COURT LIONESS A207 (H)

SIRE: TALBALBA ADVANCE L131 (H)

COOTHARABA MAGNUM (H)

TALBALBA CHOICE D058 (AI) (H)

TALBALBA CHOICE 77 (AI) (H)

RED HILL BLUE BOY (H)

BATTALION BUCKSHOT (AI) (ET) (H)

COURALLIE CONSTANCE V086 (H)

DAM: CARA PARK CURLEY P8005 (H)

MAWARRA UNIQUE C041 (AI) (H)

CARA PARK CURLEY L556 (H)

CARA PARK CURLEY G124 (AI) (H)

CARA PARKEST. **HEREFORDS** 1975

BW	200	400	600	MCW	Milk	SS	CWT	EMA	Rib	Rump	RBV%	IMF%
+9.0	+38	+63	+93	+91	+11	+1.0	+53	+6.0	-0.7	-0.9	+2.0	+1.3
74%	67%	68%	71%	62%	51%	76%	57%	48%	51%	55%	48%	50%

INDEX: Southern Self-Replacing +\$122 Northern Self-Replacing +\$102 Southern Baldy Maternal +\$114 Northern Baldy Terminal +\$84**TRAITS OBSERVED:** BWT,200WT,400WT,600WT,SS,FAT,EMA,IMF,Genomics**NOTES:** A solidly built bull with plenty of muscle in him, a good shoulder and length of body. Good bull. Top 15% EMA, top 10% RBV.

FOR ALL OF YOUR FARMING, GRAZING AND NURSERY NEEDS

WILL NEWBERRY 0427 322 287

JEFF DUDDY 0409 811 950

118 WENTWORTH STREET



SAY & CO RURAL

GLEN INNES, NSW - (02) 6732 2287

OVER 40 YEARS OF SALES & SERVICE TO THE MOTORCYCLE INDUSTRY



259 Byron Street, Inverell, NSW, 2360 - PH: 02 6721 0610



18

Battalion Major T120

(HPR)(H)**D.O.B.**
05/05/2022**Rego No.**
BHET120**Account.**
Battalion
Livestock**PURCHASER** **PRICE \$**

MAWARRA UNIQUE C041 (AI) (H)

CARA PARK MONARCH M647 (H)

CARA PARK WONDER L H220 (AI) (H)

SIRE: BATTALION MAJOR Q070 (H)

SOUTH BOOROOK BOMBAY (H)

BATTALION DELIGHT L47 (H)

SOUTH BOOROOK DELIGHT H26 (AI) (H)

GLENDAN PARK STORM W134 (H)

BOWMONT STORM C093 (H)

BOWMONT MARITANA W168 (AI) (H)

DAM: BATTALION CHERRY RIPE 4 (AI) (H)

ONSLow SHARKA T019 (H)

MOORLANDS CHERRY RIPE W155 (H)

MOORLANDS CHERRY RIPE Q028 (H)



BW	200	400	600	MCW	Milk	SS	CWT	EMA	Rib	Rump	RBV%	IMF%
+4.8	+29	+57	+89	+85	+14	+0.7	+58	+4.7	+0.1	+0.9	+1.2	+0.2
66%	65%	64%	67%	58%	52%	72%	56%	48%	52%	55%	48%	52%

INDEX: Southern Self-Replacing +\$125 Northern Self-Replacing +\$107 Southern Baldy Maternal +\$122 Northern Baldy Terminal +\$93**TRAITS OBSERVED:** 600WT,SS,FAT,EMA,IMF,Genomics

NOTES: Major T120 is a very long bull with a great top and butt shape. He is very quiet and is out of Cherry Ripe F4 who was a cow that could rarely fit up the race for treatments. (look on the back page of the catalogue, that's her big rump in the middle!)

19

Battalion If Only T130

(AI)(ET)(H)**D.O.B.**
27/06/2022**Rego No.**
BHET130**Account.**
Battalion
Livestock

PURCHASER..... PRICE \$.....

CHURCHILL A1 ET (IMP USA) (H)

MAWARRA EMPEROR (AI) (ET) (H)

MAWARRA MINERVA 816 (AI) (ET) (H)

SIRE: MAWARRA IF ONLY Q264 (H)

DEVON COURT ADVANCE F052 (H)

MAWARRA MINERVA 995 (H)

MAWARRA MINERVA 823 (H)

ARDNO ZEFFER (H)

WALLAN CREEK ZEFFER D085 (H)

WALLAN CREEK BARONESS T070 (H)

DAM: SOUTH BOOROOK DELIGHT H26 (AI) (H)

S BOOROOK OLUM (H)

S BOOROOK DELIGHT W122 (H)

S BOOROOK DELIGHT N72 (H)



BW	200	400	600	MCW	Milk	SS	CWT	EMA	Rib	Rump	RBV%	IMF%
+3.7	+31	+50	+77	+67	+20	+4.9	+44	+2.1	+0.8	+1.5	-0.1	+1.3
71%	68%	67%	68%	60%	51%	72%	57%	49%	53%	56%	49%	53%

INDEX: Southern Self-Replacing +\$126 Northern Self-Replacing +\$109 Southern Baldy Maternal +\$122 Northern Baldy Terminal +\$94**TRAITS OBSERVED:** 600WT,SS,FAT,EMA,IMF,Genomics

NOTES: If only T130's sire sold for \$103,000 in 2021. We used this sire for his low birth, high milk and IMF. Battalion If Only T130 is out of South Boorook Delight H26 who always breeds bulls with extra scrotal development which is clearly evident again here. We believe this bull will make a great HEIFER BULL

20

Battalion Mojo T121

(AI)(ET)(H)**D.O.B.**
01/05/2022**Rego No.**
BHET121**Account.**
Battalion
Livestock**PURCHASER** **PRICE \$**

MAWARRA UNIQUE C041 (AI) (H)

YARRAM UNIQUE F107 (AI) (H)

YARRAM BLESSING A187 (H)

SIRE: EDR MOJO (H)

CL 1 DOMINO 9121W 1ET (IMP USA) (AI) (ET) (H)

EDR GOLDEN J133 (AI) (H)

EDR GOLDEN C702 (AI) (H)

SMITHSTON WEE DRAM ET1 (AI) (ET) (H)

ECHO PARK WARATAH (AI) (H)

ECHO PARK BETTY 23 (AI) (H)

DAM: BATTALION CONSTANCE 42 (H)

PARRAWEENA OCTAGONAL ET (ET) (H)

COURALLIE CONSTANCE V086 (H)

COURALLIE CONSTANCE P456 (H)



BW	200	400	600	MCW	Milk	SS	CWT	EMA	Rib	Rump	RBV%	IMF%
+4.0	+31	+48	+68	+47	+22	+0.3	+44	+4.6	-0.1	+0.0	+1.6	+0.7
71%	70%	70%	71%	63%	59%	73%	60%	52%	55%	59%	52%	57%

INDEX: Southern Self-Replacing +\$117 Northern Self-Replacing +\$103 Southern Baldy Maternal +\$134 Northern Baldy Terminal +\$103**TRAITS OBSERVED:** BWT,600WT(x2),SS,FAT,EMA,IMF,Genomics

NOTES: A very solid bull with exceptional depth of body. He has plenty of milk in his pedigree and is out of the great Constance D311, one of the best we've bred. This is the last chance to secure one of her sons. Recommended HEIFER BULL.

21

Battalion Montana T123

(H)

D.O.B.
04/05/2022

Rego No.
BHET123

Account.
Battalion
Livestock

PURCHASER **PRICE \$**

MAWARRA UNIQUE C041 (AI) (H)

CARA PARK MONARCH M647 (H)

CARA PARK WONDER L H220 (AI) (H)

SIRE: BATTALION MONTANA Q079 (AI) (ET) (H)

MAWARRA VIRGINIAN (H)

BATTALION CHERRY RIPE 6 (AI) (H)

MOORLANDS CHERRY RIPE W155 (H)

BATTALION BLACK HAWK K7 (H)

BATTALION BOMBER (H)

BATTALION CONSTANCE 42 (H)

DAM: BATTALION FIRST DAY Q093 (H)

SUGARLOAF JIM JIM B302 (AI) (H)

BATTALION FIRST DAY 1 (H)

STRATHLEIGH FIRST DAY E353 (H)



BW	200	400	600	MCW	Milk	SS	CWT	EMA	Rib	Rump	RBV%	IMF%
+4.5	+28	+54	+73	+68	+15	+1.2	+48	+4.1	+0.4	+1.2	+0.9	+0.4
65%	63%	62%	66%	56%	47%	71%	53%	45%	49%	52%	45%	49%

INDEX: Southern Self-Replacing +\$108 Northern Self-Replacing +\$97 Southern Baldy Maternal +\$116 Northern Baldy Terminal +\$91

TRAITS OBSERVED: 600WT,SS,FAT,EMA,IMF,Genomics

NOTES: Another son of the \$24,000 Montana Q079. This is a heifers first calf, his dam weaned the top heifer this year. We rate this young cow very highly in our herd and believe she will be one of the top breeders in the years to come. HEIFER BULL

22

Battalion Taupo T136

(H)**D.O.B.**
20/07/2022**Rego No.**
BHET136**Account.**
Battalion
Livestock**PURCHASER** **PRICE \$**

PUTE DUSKY D16 (H)

LOCHARBURN GERRY 11004 (IMP NZL) (H)

LOCHARBURN BRYONIA 02124 (H)

SIRE: KAROONDA TAUPO (AI) (H)

WALLAN CREEK HAYMAKER D225 (H)

KAROONDA MARITANA H201 (H)

KAROONDA MARITANA A093 (H)

MAWARRA UNIQUE C041 (AI) (H)

CARA PARK UNIQUE J324 (AI) (H)

CARA PARK TREASURE F037 (AI) (H)

DAM: BATTALION PRUDENCE M060 (AI) (H)

INJEMIRA ADVANCE V093 (H)

DUNOON PRUDENCE Z211 (H)

DUNOON PRUDENCE W027 (H)



BW	200	400	600	MCW	Milk	SS	CWT	EMA	Rib	Rump	RBV%	IMF%
+6.1	+35	+60	+92	+80	+15	+2.0	+64	+7.0	+0.6	+1.3	+1.8	+0.8
68%	65%	64%	68%	59%	50%	72%	55%	46%	49%	53%	46%	49%

INDEX: Southern Self-Replacing +\$129 Northern Self-Replacing +\$115 Southern Baldy Maternal +\$109 Northern Baldy Terminal +\$76**TRAITS OBSERVED:** 600WT,SS,FAT,EMA,IMF,Genomics**NOTES:** A super soft easy doing Karoonda Taupo son. This bull is very thick and extremely wide through the hips and pins. His dam is a big dark coloured female with extra growth.

23

Battalion If Only T135

(AI)(ET)(H)**D.O.B.**
27/06/2022**Rego No.**
BHET135**Account.**
Battalion
Livestock

PURCHASER..... PRICE \$.....

CHURCHILL A1 ET (IMP USA) (H)

MAWARRA EMPEROR (AI) (ET) (H)

MAWARRA MINERVA 816 (AI) (ET) (H)

SIRE: MAWARRA IF ONLY Q264 (H)

DEVON COURT ADVANCE F052 (H)

MAWARRA MINERVA 995 (H)

MAWARRA MINERVA 823 (H)

ARDNO ZEFFER (H)

WALLAN CREEK ZEFFER D085 (H)

WALLAN CREEK BARONESS T070 (H)

DAM: SOUTH BOOROOK DELIGHT H26 (AI) (H)

S BOOROOK OLUM (H)

S BOOROOK DELIGHT W122 (H)

S BOOROOK DELIGHT N72 (H)



BW	200	400	600	MCW	Milk	SS	CWT	EMA	Rib	Rump	RBY%	IMF%
+3.7	+28	+45	+67	+62	+14	+4.3	+38	+3.1	+1.7	+2.8	-0.7	+1.7
71%	68%	68%	69%	60%	51%	72%	57%	49%	53%	56%	49%	53%

INDEX: Southern Self-Replacing +\$113 Northern Self-Replacing +\$103 Southern Baldy Maternal +\$108 Northern Baldy Terminal +\$86**TRAITS OBSERVED:** 600WT,SS,FAT,EMA,IMF,Genomics

NOTES: A full ET brother to lot 19 and very much a similar style of bull. He has massive scrotal development and is consistently replicated in his pedigree on both sides. He is a dark coated free moving young sire who we are confident will breed short gestation and low birthweight. HEIFER BULL

INSIGNIA Company

Insignia Co. provides customised marketing merchandise specialising in trucker hats!



As cattle breeders ourselves we understand your industry



WWW.INSIGNIACO.COM.AU

 @insigniacompany  @insigniacustomcompany

 admin@insigniaco.com.au  02 6734 4134

24 Cara Park Emperor T2042 (H)



D.O.B.
17/07/2022

Rego No.
JENT2042

Account.
JE Newnham & Co

PURCHASER **PRICE \$**

CHURCHILL A1 ET (IMP USA) (H)

MAWARRA EMPEROR (AI) (ET) (H)

MAWARRA MINERVA 816 (AI) (ET) (H)

SIRE: TALBALBA EMPEROR P043 (AI) (H)

DEVON COURT ADVANCE F052 (H)

TALBALBA CHOICE K47 (H)

TALBALBA CHOICE F132 (H)

GH NEON 17N (IMP CAN) (H)

MAWARRA UNIQUE C041 (AI) (H)

MAWARRA MINERVA 554 ET1 (AI) (ET) (H)

DAM: CARA PARK CURLEY J303 (AI) (H)

CARA PARK ADVANCE B631 (AI) (H)

CARA PARK CURLEY F021 (AI) (H)

CARA PARK CURLEY Z445 (H)

CARA PARK
EST. **HEREFORDS** 1975

BW	200	400	600	MCW	Milk	SS	CWT	EMA	Rib	Rump	RBV%	IMF%
+6.6	+43	+78	+114	+121	+15	+1.6	+71	+3.5	-0.9	-1.3	+1.4	+1.3
75%	69%	69%	72%	63%	55%	77%	58%	50%	53%	56%	50%	53%

INDEX: Southern Self-Replacing +\$147 Northern Self-Replacing +\$123 Southern Baldy Maternal +\$145 Northern Baldy Terminal +\$120

TRAITS OBSERVED: BWT,200WT,400WT,600WT,SS,FAT,EMA,IMF,Genomics

NOTES: A stylish bull with great outlook and balance, good skin and hair. Recovering from and injury at the time of cataloguing. Top 15% 200 Day weight, top 5% 400 and 600 Day Weight, top 1% Net Feed Efficiency.

25

Cara Park Emperor T2093 (H)

**D.O.B.**
01/08/2022**Rego No.**
JENT2093**Account.**
JE Newnham & Co**PURCHASER** **PRICE \$**

CHURCHILL A1 ET (IMP USA) (H)

MAWARRA EMPEROR (AI) (ET) (H)

MAWARRA MINERVA 816 (AI) (ET) (H)

SIRE: TALBALBA EMPEROR P043 (AI) (H)

DEVON COURT ADVANCE F052 (H)

TALBALBA CHOICE K47 (H)

TALBALBA CHOICE F132 (H)

MAWARRA UNIQUE C041 (AI) (H)

CARA PARK UNIQUE H295 (H)

CARA PARK LOYALTY B638 (AI) (H)

DAM: CARA PARK PEARL L579 (H)

INJEMIRA ADVANCE V093 (H)

CARA PARK PEARL H213 (AI) (H)

CARA PARK PEARL E979 (H)

CARA PARKEST. **HEREFORDS** 1975

BW	200	400	600	MCW	Milk	SS	CWT	EMA	Rib	Rump	RBV%	IMF%
+5.8	+42	+72	+103	+97	+17	+1.9	+67	+4.0	-0.5	-0.8	+1.7	+0.5
74%	68%	67%	70%	61%	52%	76%	56%	47%	51%	55%	48%	51%

INDEX: Southern Self-Replacing +\$133 Northern Self-Replacing +\$112 Southern Baldy Maternal +\$128 Northern Baldy Terminal +\$103**TRAITS OBSERVED:** BWT,200WT,400WT,600WT,SS,FAT,EMA,IMF,Genomics**NOTES:** Good all round bull, balanced data, Top 20% 200 Day Weight, top 15% 400 Day Weight, top 10% 600 Day Weight, top 15% RBV. Out of a big barrel high performing cow by Unique H295.

26 Cara Park Emperor T2085 (H)



D.O.B.
29/07/2022

Rego No.
JENT2085

Account.
JE Newnham & Co

PURCHASER **PRICE \$**

CHURCHILL A1 ET (IMP USA) (H)
 MAWARRA EMPEROR (AI) (ET) (H)
 MAWARRA MINERVA 816 (AI) (ET) (H)
SIRE: TALBALBA EMPEROR P043 (AI) (H)
 DEVON COURT ADVANCE F052 (H)
 TALBALBA CHOICE K47 (H)
 TALBALBA CHOICE F132 (H)
 RED HILL BLUE BOY (H)
 BATTALION BUCKSHOT (AI) (ET) (H)
 COURALLIE CONSTANCE V086 (H)
DAM: CARA PARK TREASURE P8001 (H)
 BOWMONT STORM C093 (H)
 CARA PARK TREASURE L515 (AI) (H)
 CARA PARK TREASURE F002 (AI) (H)

CARA PARK
EST. **HEREFORDS** 1975

BW	200	400	600	MCW	Milk	SS	CWT	EMA	Rib	Rump	RBV%	IMF%
+5.6	+34	+54	+77	+66	+17	+0.7	+48	+4.8	+1.5	+2.4	-0.1	+2.2
74%	68%	68%	71%	62%	53%	77%	58%	49%	52%	56%	49%	52%

INDEX: Southern Self-Replacing +\$115 Northern Self-Replacing +\$100 Southern Baldy Maternal +\$116 Northern Baldy Terminal +\$95

TRAITS OBSERVED: BWT,200WT,400WT,600WT,SS,FAT,EMA,IMF,Genomics

NOTES: Good bull, stylish with plenty of length. Top 5% IMF.

27

Cara Park Emperor T2073 (H)



D.O.B.
25/07/2022

Rego No.
JENT2073

Account.
JE Newnham & Co

PURCHASER **PRICE \$**

CHURCHILL A1 ET (IMP USA) (H)

MAWARRA EMPEROR (AI) (ET) (H)

MAWARRA MINERVA 816 (AI) (ET) (H)

SIRE: TALBALBA EMPEROR P043 (AI) (H)

DEVON COURT ADVANCE F052 (H)

TALBALBA CHOICE K47 (H)

TALBALBA CHOICE F132 (H)

WARRINGA GOOGLE G23 (H)

GLENDAN PARK KNOCKOUT K160 (ET) (H)

GLENDAN PARK LASS G013 (AI) (H)

DAM: CARA PARK CURLEY P8048 (H)

CARA PARK ADVANCE B631 (AI) (H)

CARA PARK CURLEY K427 (AI) (H)

CARA PARK CURLEY G194 (H)

CARA PARK

EST. **HEREFORDS** 1975

BW	200	400	600	MCW	Milk	SS	CWT	EMA	Rib	Rump	RBV%	IMF%
+3.5	+32	+63	+91	+81	+21	+1.9	+59	+4.5	+0.1	+0.1	+1.5	+0.8
74%	69%	69%	72%	63%	53%	77%	58%	49%	53%	57%	50%	53%

INDEX: Southern Self-Replacing +\$135 Northern Self-Replacing +\$116 Southern Baldy Maternal +\$139 Northern Baldy Terminal +\$112

TRAITS OBSERVED: BWT,200WT,400WT,600WT,SS,FAT,EMA,IMF,Genomics

NOTES: Low Birth Weight would be suitable for heifer joining. Good bull well put together. Full brother retained in the herd.

28 *Cara Park Emperor T2050* (AI)(H)



D.O.B.
19/07/2022

Rego No.
JENT2050

Account.
JE Newnham & Co

PURCHASER **PRICE \$**

CHURCHILL A1 ET (IMP USA) (H)
 MAWARRA EMPEROR (AI) (ET) (H)
 MAWARRA MINERVA 816 (AI) (ET) (H)
SIRE: TALBALBA EMPEROR P043 (AI) (H)
 DEVON COURT ADVANCE F052 (H)
 TALBALBA CHOICE K47 (H)
 TALBALBA CHOICE F132 (H)
 YARRAM UNIQUE F107 (AI) (H)
 EDR MOJO (H)
 EDR GOLDEN J133 (AI) (H)
DAM: CARA PARK MARSHALL LASS Q9008 (H)
 BATTALION BUCKSHOT (AI) (ET) (H)
 CARA PARK MARSHALL LASS M624 (H)
 CARA PARK MARSHALL J366 (H)

CARA PARK
EST. **HEREFORDS** 1975

BW	200	400	600	MCW	Milk	SS	CWT	EMA	Rib	Rump	RBV%	IMF%
+4.0	+33	+54	+80	+76	+18	+1.7	+50	+2.9	-0.3	-0.6	+0.8	+1.2
74%	68%	68%	71%	62%	51%	76%	58%	48%	51%	55%	49%	52%

INDEX: Southern Self-Replacing +\$123 Northern Self-Replacing +\$104 Southern Baldy Maternal +\$132 Northern Baldy Terminal +\$110

TRAITS OBSERVED: GL,BWT,200WT,400WT,600WT,SS,FAT,EMA,IMF,Genomics

NOTES: Low Birth Weight would be suitable for heifer joining. Similar style of bull to the previous lot with very low birth weight and good growth.

29

Cara Park Advance T2118

(H)**D.O.B.**
24/08/2022**Rego No.**
JENT2118**Account.**
JE Newnham & Co**PURCHASER** **PRICE \$**

INJEMIRA ADVANCE C085 (H)

DEVON COURT ADVANCE F052 (H)

DEVON COURT LIONESS A207 (H)

SIRE: TALBALBA ADVANCE L131 (H)

COOTHARABA MAGNUM (H)

TALBALBA CHOICE D058 (AI) (H)

TALBALBA CHOICE 77 (AI) (H)

RED HILL BLUE BOY (H)

BATTALION BUCKSHOT (AI) (ET) (H)

COURALLIE CONSTANCE V086 (H)

DAM: CARA PARK WONDER LASS L545 (H)

MAWARRA UNIQUE C041 (AI) (H)

CARA PARK WONDER LASS G181 (H)

CARA PARK WONDER L V038 (H)

CARA PARKEST. **HEREFORDS** 1975

BW	200	400	600	MCW	Milk	SS	CWT	EMA	Rib	Rump	RBV%	IMF%
+2.6	+25	+44	+67	+59	+14	+0.0	+44	+4.7	+0.1	+0.6	+1.2	+1.3
74%	68%	68%	71%	62%	52%	76%	58%	48%	51%	55%	49%	50%

INDEX: Southern Self-Replacing +\$117 Northern Self-Replacing +\$107 Southern Baldy Maternal +\$122 Northern Baldy Terminal +\$92**TRAITS OBSERVED:** BWT,200WT,400WT,600WT,SS,FAT,EMA,IMF,Genomics**NOTES:** Low birth weight would be suitable for heifer joining. Good bull, the youngest in our draft. In the top 20% for Birth Weight on Breedplan and good carcass data.

30**Cara Park Emperor T2018****(AI)(H)****D.O.B.**
11/07/2022**Rego No.**
JENT2018**Account.**
JE Newnham & Co**PURCHASER**..... **PRICE \$**.....

CHURCHILL A1 ET (IMP USA) (H)

MAWARRA EMPEROR (AI) (ET) (H)

MAWARRA MINERVA 816 (AI) (ET) (H)

SIRE: TALBALBA EMPEROR P043 (AI) (H)

DEVON COURT ADVANCE F052 (H)

TALBALBA CHOICE K47 (H)

TALBALBA CHOICE F132 (H)

YARRAM UNIQUE F107 (AI) (H)

EDR MOJO (H)

EDR GOLDEN J133 (AI) (H)

DAM: CARA PARK PEARL Q9084 (H)

BOWMONT STORM C093 (H)

CARA PARK PEARL F053 (AI) (H)

CARA PARK PEARL Z448 (AI) (H)

CARA PARKEST. **HEREFORDS** 1975

BW	200	400	600	MCW	Milk	SS	CWT	EMA	Rib	Rump	RBV%	IMF%
+4.0	+36	+65	+98	+90	+22	+2.6	+66	+4.7	+0.4	+0.8	+0.9	+1.4
72%	67%	67%	68%	60%	51%	66%	56%	48%	52%	55%	45%	53%

INDEX: Southern Self-Replacing +\$150 Northern Self-Replacing +\$130 Southern Baldy Maternal +\$151 Northern Baldy Terminal +\$122**TRAITS OBSERVED:** GL,BWT,200WT,400WT,600WT,SS,FAT,EMA,IMF,Genomics**NOTES:** Low Birth Weight would be suitable for heifer joining. An attractive bull, good head and eye with good length of body. Top 20% for IMF and 600 Day Weight.



MULTIMIN[®]

WHEN IT MATTERS



IMPROVED FIRST CYCLE CONCEPTION RATE

Multimin Evolution has been shown to improve the first cycle conception rate by **UP TO 19.4%.** ¹ Conception in the first cycle can lead to an additional 28 to 48 days for calves to grow.



IMPROVED PREGNANCY RATES

Pregnancy rates in breeding females treated with Multimin Evolution are up to **12% HIGHER** than untreated females, depending on the length of the breeding season and breeding method. ^{2,3,4}



IMPROVED SPERM QUALITY

Bulls treated with Multimin Evolution 90 days before joining had **22% HIGHER** sperm concentration and significantly more motile sperm than control animals. ^{5,6}

MULTIMIN EVOLUTION has been shown in scientific studies to improve cattle health, fertility, and productivity.



For more information, contact Matt Falconer 0418 684 522

Virbac are proud sponsors of Battalion Herefords



CO-OP KILLARNEY CO-OP.

FOR ALL YOUR STOCKFEED REQUIREMENTS



luy Street,
KILLARNEY
07 4664 1188





Notes

.....

.....

.....

.....

.....

.....

TROW Livestock Haulage

For all your livestock, fodder and machinery haulage needs
in the New England



0497 627 962



Thank you

Thank you to all successful purchasers, under bidders and all who attended the sale for your support. Any inspection and consideration of our cattle is much appreciated.

Grant, Kylie, Graeme & Natalie



Purchaser Details

NAME: _____

Trading Name: _____

Address: _____

Phone: _____ Mobile: _____

Email: _____

PIC Number: _____ Bid Card Number: _____

AGENT DETAILS

Company Name: _____

Agent Name: _____

Phone: _____ Mobile: _____

PURCHASE DETAILS

Lots Purchased: _____

Transport Required: Yes No

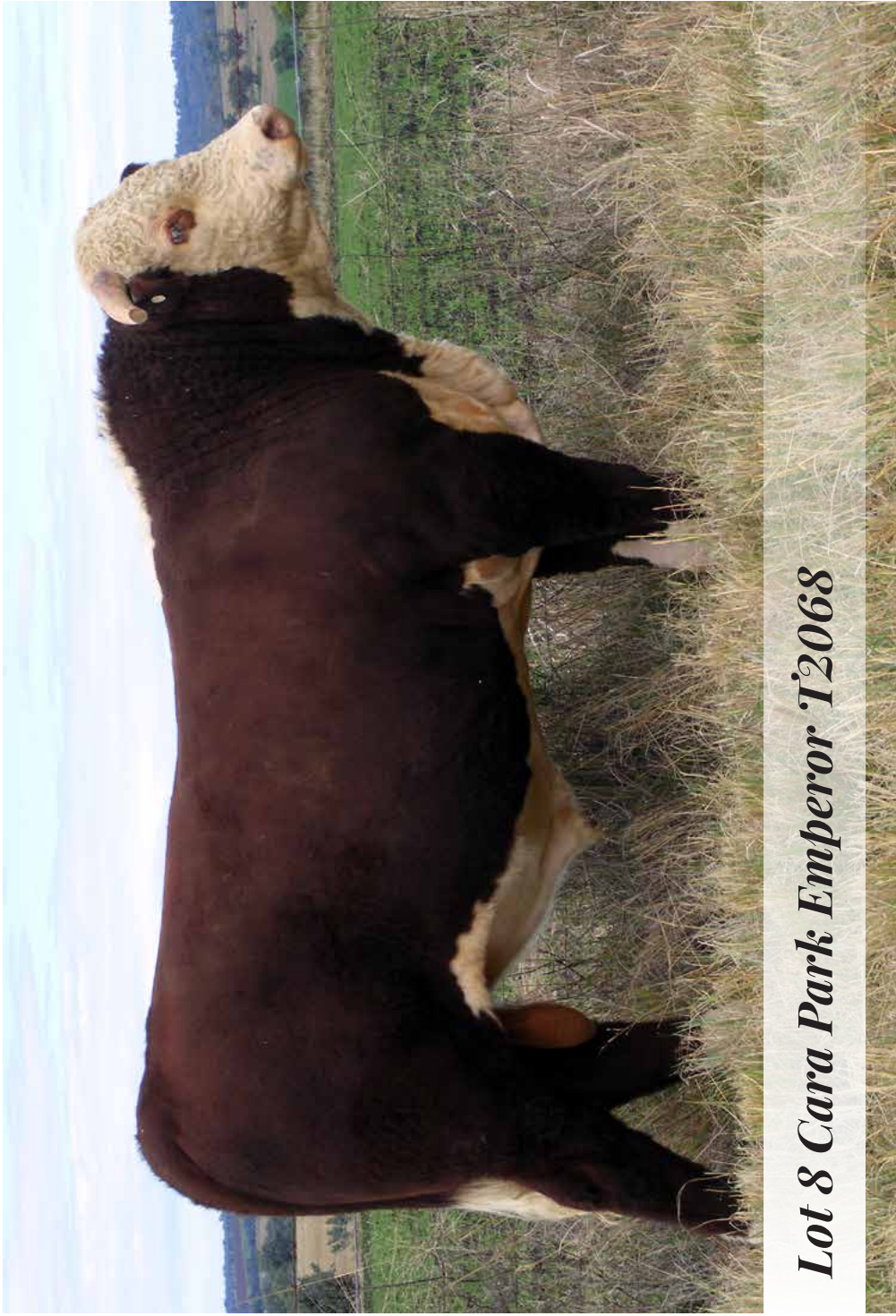
Insurance Required: Yes No

Society Transfer Required: Yes No

Herd Ident (if applicable): _____

Signature: _____

Date: _____



Lot 8 Cara Park Emperor T2068

*“Pleasure in the job puts perfection
in the work”* -Aristotle

