



**McMILLAN®**  
FIBERGLASS STOCKS



SHOOT TO WIN.®





SUCCESS IN LIFE IS DETERMINED BY  
WHETHER YOU HIT WHAT YOU AIM FOR.

**SHOOT TO WIN.®**

CONTENTS

|                           |           |               |           |
|---------------------------|-----------|---------------|-----------|
| TACTICAL STOCKS           | <b>5</b>  | STOCK OPTIONS | <b>42</b> |
| HUNTING & SPORTING STOCKS | <b>13</b> | ACCESSORIES   | <b>43</b> |
| COMPETITION STOCKS        | <b>31</b> | Q & A         | <b>45</b> |
| COLORS & FINISHES         | <b>38</b> |               |           |



A-5® TACTICAL STOCK

SHOOT TO WIN.®



SHOOT TO WIN.®







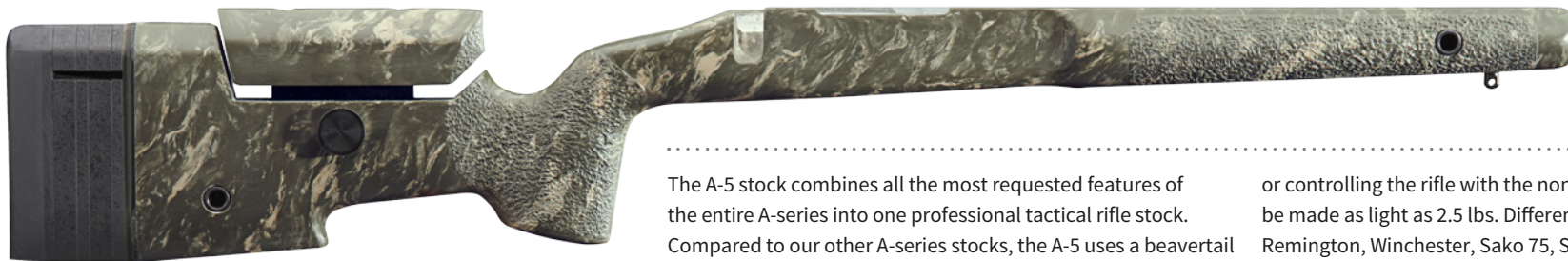
FOR THE ELITE FEW, PRECISION SHOOTING IS NOT  
JUST A PASSION, **BUT A JOB DESCRIPTION.**

The birth of the modern tactical rifle can be traced back to the year 1975. Gale McMillan, founder of McMillan Fiberglass Stocks, partnered with the Marine Corps to develop a pioneering project that is now known as the M40A1. Today, McMillan is the most-issued tactical stock in the world. Army, Navy, Marines, Secret Service, Treasury, Border Patrol, FBI, and on ... our customer list reads like a who's who of the best professional tactical units in the business.

Our tactical series is a combination of benchrest accuracy, battlefield ruggedness, superior ergonomics, and specialized design. There is indeed a difference between professional equipment and look-alike equipment. When that difference matters to your job performance, demand McMillan.

TACTICAL SERIES

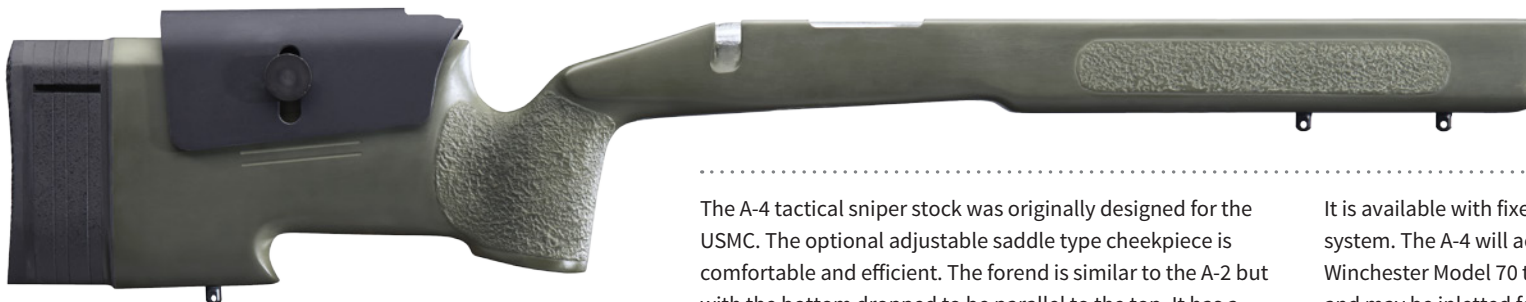




A-5®

The A-5 stock combines all the most requested features of the entire A-series into one professional tactical rifle stock. Compared to our other A-series stocks, the A-5 uses a beavertail forearm that is wider and flatter. The action and barrel sit lower for enhanced stability. The A-5 uses a trim pistol grip. The dual purpose butt hook is fully functional for either riding sandbags

or controlling the rifle with the non-trigger hand. The A-5 can be made as light as 2.5 lbs. Different molds are available for Remington, Winchester, Sako 75, Sako A-series, Howa, Savage, Weatherby Mark V, and most custom benchrest actions in both right and left hand configurations. Now also available with either of the integral cheekpiece options.



A-4®

The A-4 tactical sniper stock was originally designed for the USMC. The optional adjustable saddle type cheekpiece is comfortable and efficient. The forend is similar to the A-2 but with the bottom dropped to be parallel to the top. It has a vertical pistol grip and a butt hook for better control of the butt with the non-trigger hand.

It is available with fixed length of pull or adjustable spacer system. The A-4 will accommodate all Remington 700 type and Winchester Model 70 type actions. The stock is ambidextrous and may be inletted for either right and left hand. Now also available with either of the integral cheekpiece options.

A-3®

The A-3 is a modified lightweight version of our popular A-2 stock. It is the most widely used field sniper stock available. It is available with or without an adjustable integral cheekpiece. The forend is .312 inch shallower than the A-2 from top to bottom to provide a more stable platform while shooting off sand bags or a pedestal. The stock is also filled slightly lighter than the A-2 but retains all

the features that make the A-2 such an excellent tactical stock. The A-3 is made primarily for Remington and Winchester actions and it will take barrels up to 1.350 inches in diameter. Available in right and left hand. Now also available with either of the integral cheekpiece options.







### ADJUSTABLE A3-5®

This stock is a variation of our famous A-3 stock but with the addition of an A-5 type butt hook on the bottom of the butt. The flat on the bottom of the hook is about 3/4" wide. This stock is only

available with an adjustable integral cheekpiece which gives both vertical and horizontal adjustments and is available with either the standard or thumbwheel elevator system.

### A-2®

First of the "A" series tactical stocks, the A-2 stock was designed using input from the U.S. Marine Corps as well as the F.B.I. A vertical pistol grip and straight line, extra-high comb provide for better prone shooting as well as seated bench type shooting. The forend is tapered downward from front to rear which allows for small elevation adjustments by sliding the rifle forward when using a front sand bag.



It can be equipped with either a 3-way adjustable butt assembly, an adjustable spacer system or fixed length of pull. A saddle type cheekpiece may be added for use with night vision equipment. The A-2 will fit most Remington, Winchester, FN Mauser, Sako, Browning, Ruger MK II, Savage, and Howa 1500 actions. Available in right and left hand.

### TPR TACTICAL PRECISION RIFLE

The TPR stock was designed specifically to add to McMillan's already broad array of tactical stocks. In addition to the adjustable options and versatility of our "A" series stocks, it also offers a pistol grip. The design evolved from a desire to create a stock that offers everything that a straight line chassis stock offers along with the enhanced accuracy and



recoil reduction characteristics of a fiberglass stock. This stock is fully ambidextrous and can be inletted for most Remington 700 type actions and Savage blind magazine actions. The forearm can be inletted for most barrel contours up to a 1.350" diameter straight contour and has enough depth for installation of a Versa-Pod bipod stud.

### A-TH

The A-TH stock was created after numerous customer requests for a thumbhole stock in McMillan's tactical line. It uses a flat square type forearm comparable to the popular A-3 but with textured grooves on the sides for a superb grip when shooting off-hand. The butt hook also has texture and a thumb groove for enhanced grip and control when shooting



off a bench or prone. The ergonomics of the pistol grip are designed to put the shooter's hand in the most natural and comfortable position. The A-TH must be ordered with one of the integral cheekpiece options and is available in right hand only. It can be inletted for most Remington type actions and for barrel contours up to a 1.35" straight blank.



## M40A1 (HTG) GENERAL PURPOSE HUNTING

The original M40A1 Marine Sniper Rifle stock was designed for a heavy barrel Remington 700. It can be used for either short or long actions, as well as ADL (blind magazine), BDL (hinged floorplate), and most detachable box magazine systems. It

will take any barrel contour up to a #8. This stock can also be used for most Remington, Winchester, and Savage actions. The M40A1 is available with or without texture on the forend and pistol grip. Available in right and left hand.



### Adjustable HTG

Available with adjustable integral cheekpiece.



### A1-3®

This stock was designed in response to a federal agency that requested certain modifications to the M40A1 sniper stock. The A1-3 features a wider forend similar to the A-3 tactical stock. The comb has been raised to the maximum height practical and the 2" wide forend allows for mounting a broad range of optical options,

such as night vision equipment. The stock has stippling on the pistol grip with a smooth surface on the forend. It is shown here with optional flush mount swivel cups. This stock is not available with an adjustable cheekpiece.



### NEW TAC®-50 A1

We have now made several improvements to the original TAC®-50 stock. The forearm is now 5" longer to move the bipod forward for more precise sighting adjustments. The new buttstock now

has an integral vertical adjustable cheekpiece that is much more comfortable to shoot the rifle with. Finally the pistol grip is a bit slimmer to fit a wider range of hand sizes.



### BIG MAC

The Big Mac is actually more of a tactical stock than a benchrest stock. It has a 2.500 inch square forend which allows it to ride the bags well. It has a vertical pistol grip and a straight comb with no cheekpiece. The Big Mac was specifically designed for the McMillan action, although it can be inletted for most 50 caliber actions. Available in right and left hand. Shown with optional bipod.

**M1A**

The M1A is patterned after the Marine Corps Match M14 stock and is ideal for a heavy barreled, match grade service rifle. It is available without hardware in molded-in colors only. It may be completely

finished with a painted exterior if all hardware is supplied by the customer. It must be properly bedded to the customer's action before firing. For M14/M1A rifles only.

**M3A®**

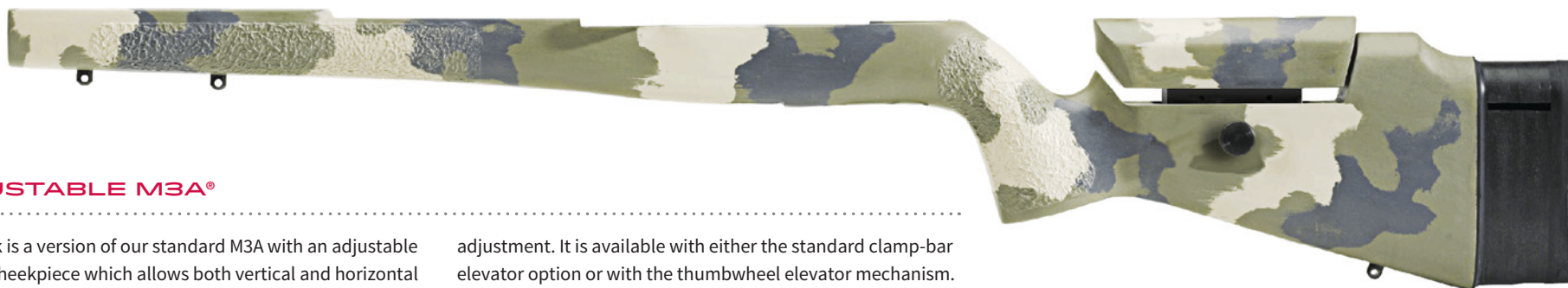
Our M3A stock was designed as an alternative to the pistol grip type M2A. It has a vertical pistol grip with a wrap-over thumb shelf and can be equipped with a vertically adjustable saddle type cheekpiece. The butt is similar in design to the A-2 stock and can be fitted with an adjustable spacer system or a fixed

length of pull. The forend is slightly smaller than our Match M1A and is consequently lighter and more maneuverable. It must be bedded. It is not legal for NRA Service Rifle Competition. For M14/M1A rifles only.

**ADJUSTABLE M3A®**

This stock is a version of our standard M3A with an adjustable integral cheekpiece which allows both vertical and horizontal

adjustment. It is available with either the standard clamp-bar elevator option or with the thumbwheel elevator mechanism.







## MCHALE

The McHale stock was originally designed as a competition stock for use with a number of custom actions with thick benchrest type rear tangs. The generic rear tang area will require some fitting when used with most actions. It has a high, straight comb without a cheekpiece so the stock can be shot from either side. The belly of the stock is parallel to the top so it is best suited for a blind magazine or single shot rather than with a floorplate,

which requires some taper to the belly. This stock works well with most Nesika Bay, Stolle, Hall, BAT, and other benchrest type actions which do not have the normal Remington/Winchester tapered style rear tang. It can be inletted for the CZ-550 Magnum with heavy target type barrels at some sacrifice in cosmetics. The McHale can be inletted for both right and left hand actions. It is not recommended for Remington or Winchester type actions.



## SSG 69

Based on the A-3 stock, this SSG 69 stock was designed specifically for the Steyr SSG 69 series of .308 tactical rifles. It can be ordered with either of the integral cheekpiece options, and with most all of

our other color, finish and other hardware options such as recoil pads, spacer systems, etc.



## STEYR SBS

Also based on the A-3 stock, this SBS stock was designed specifically for the Steyr SBS and SSG-04 .308 tactical rifles. It can be ordered

with either of the integral cheekpiece options, and with most all of our other color, finish, butt systems and other hardware options.



## SIG 3000

Fully fitted for the SigArms 3000 .308 caliber tactical rifle, this stock can be ordered with either of the integral cheekpiece options,

a spacer system on the butt, an accessory rail under the forearm, two sling studs and a textured black finish.

# MCMILLAN MODULAR TACTICAL SYSTEMS



## MFS-14® MODULAR TACTICAL SYSTEM

The MFS-14 turns an M14 or M1A rifle into a compact modular tactical system. The basic stock serves as a chassis to which you can add tactical components according to the function desired. This design concept is by the request of several U.S. and foreign organizations who expressed a need for a more compact .308 caliber compact semi-automatic precision rifle. You can order the basic fiberglass stock which comes with the folding mechanism, buttstock adaptor and front ferrel separately, or complete with any of the optional components. The stock can be inletted for most M14 or M1A actions but the action lugs must be bedded before use. The buttstock adaptor will accept most of the AR-15/M-16/M-4 type buttstocks. The forearm handguard is not included, you must supply your own. All colors and finishes are available.

Basic fiberglass chassis comes standard with folding mechanism and buttstock adaptor, but without forend accessory rail.

Send us your hand guard and we'll paint it to match.  
(Applies only if you order your stock with a painted finish.)

CNC-machined inletting for precision fit on any M14 action. Lugs must be glass bedded.

Optional flush mount swivel cups on either side.

Finger grooves on right and left sides of forend.

Available with optional short or long forend accessory rail. Accepts Weaver style attachments.

Buttstock adapter allows 5/8" vertical adjustment for scope or iron sight use.

*Above and left: MFS-14 stock in an olive finish with a Springfield Armory M1A carbine, long forend rail and a SOCOM buttstock.*



## BAF BOLT ACTION FOLDER

The Bolt Action Folder stock is a variation of McMillan's MFS-14 stock redesigned to accept bolt action rifles. The pistol grip has been re-contoured to provide a more comfortable and vertical grip. The generic rear tang area allows McMillan to inlet this stock for a variety of bolt action rifles. The BAF takes actions up to 1.4" in diameter and barrels up to 1.35" in diameter. The stock comes in two versions, one with an extended forearm to accept either of McMillan's forearm accessory tri-rails, and one with a shorter conventional forearm. Both stocks are for right hand rifles only and come with the folding mechanism and buttstock adaptor. This stock accepts the same options as the MFS-14. All colors and finishes are available.



Accepts all AR-15 style buttstocks.

Folding design allows for compact size in a full-power tactical rifle.

*Above and right: BAF stock in a marble finish with a Remington 700 barreled action, short forend rail and a MAGPUL PRS-2 buttstock.*

## OPTIONS TO CUSTOMIZE YOUR MODULAR TACTICAL SYSTEM



MAGPUL PRS-2



CAR 6 position adjustable butt



Rubber Butt Pad For CAR



ACE Socom 5 position adjustable buttstock



CAR cheekpiece



Short 4" forend accessory rail



Picatinny sling adaptor



Long 10.75" forend accessory rail



SHOOT TO WIN.®



REMINGTON VARMINT STOCK



.....

## THERE ARE TWO KINDS OF PEOPLE IN THIS WORLD. HUNTERS. AND GATHERERS. **WHICH ONE ARE YOU?**

A serious hunter is a different breed. Compromise is not an option when the hunt of a lifetime is at stake. And that includes the equipment you choose.

Humidity imperceptibly twists the finest wood stock, altering pressure points and barrel vibrations. On a bad day, you could miss that record book shot by up to 10" at 400 yards.

Don't take that risk. Every McMillan fiberglass stock is a weatherproof foundation for accuracy, with military-grade

ruggedness and custom-grade good looks. The best rifle manufacturers use McMillan for their finest custom grade and precision tactical rifles. Custom gunsmiths choose McMillan, too.

So demand McMillan for your next hunting rifle. While the rest of your friends are content to secure their next meal from a drive-in window, you'll have the inner satisfaction of pursuing the ultimate challenge of the wilderness, with the finest professional equipment ever made.

# HUNTING & SPORTING



### 1700 FEATHERWEIGHT

The 1700 Featherweight is a very nice, small .22 sporter stock with a high roll-over Monte Carlo cheekpiece and a small schnabel forend. It was patterned after the Anschutz® factory

Deluxe sporter stock and will only accommodate Anschutz® 1700 series and 64 series actions. Available in right hand only.



### BROWNING CLASSIC

The Browning Classic is an Americanized European design with a straight comb and a cheekpiece with a shadow line. The stock has a small amount of cast off as well as cant, which allows the shooter to get behind the scope more easily. The forend will accept up to a #5 barrel contour. Because

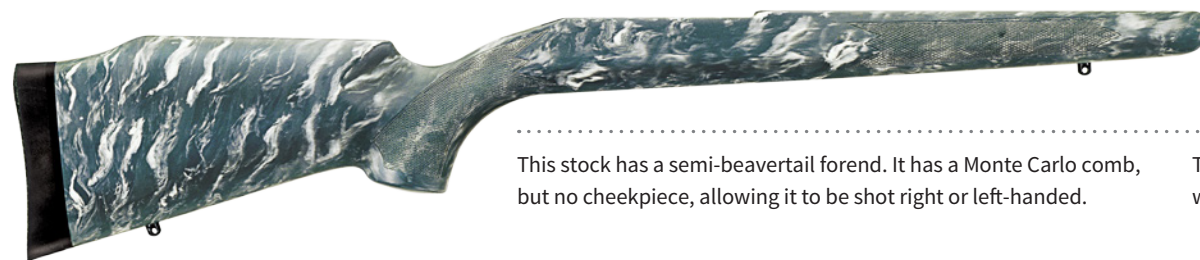
all of the stocks are filled solid and then inletted using computerized CNC machining centers, each stock is made specifically either for the A-Bolt, the BBR, or the Browning Safari. To guarantee the fit of completely finished stocks, the barreled action must be sent in. Available in right or left hand.



### BROWNING HUNTER

The Browning Hunter is a copy of a factory Sako design. It has a Monte Carlo cheekpiece and a palm swell. It also has a small amount of cast off and cant, which makes for easier target acquisition. The forend of this stock is very narrow and will take up to a #4 barrel contour. Because all of the stocks

are filled solid and then inletted using computerized CNC machining centers, each stock is made specifically either for the A-Bolt, the BBR, or the Browning Safari. To guarantee the fit of completely finished stocks, the barreled action must be sent in. Available in right or left hand.



### BROWNING VARMINT

This stock has a semi-beavertail forend. It has a Monte Carlo comb, but no cheekpiece, allowing it to be shot right or left-handed.

This stock is one of the more popular stocks in the McMillan line and will accept up to #8 barrel contour. Available in right and left hand.

**CZ 550**

This stock is specifically designed to fit the CZ 550 actions. The buttstock has a straight comb and cheekpiece, and the fairly narrow forend will take custom barrels up to a #5 contour. This



stock has fine checkering and is available in right hand only. For CZ Magnum actions, see the CZ Express stock on this page.

**CZ EXPRESS**

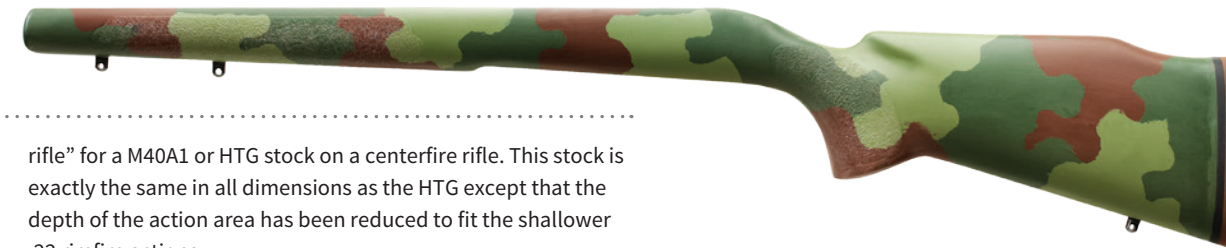
This is an English safari style stock designed specifically for the CZ 550 Magnum action. It will work with many other large caliber actions with drop belly floorplates such as the Brno 602, the Olympic Arms BBK-01 and the 02 actions. The medium-width



forend will accept custom barrel contours up to a Douglas #5 but will not take heavy straight taper target type contours. Right hand only.

**CZ M40A22**

This is a variation of McMillan's popular M40A1 and HTG stock modified specifically for the CZ 452-453-455 line of rifles. It has textured grip panels on the pistol grip and forearm. This is an excellent field varmint stock or for a .22 rimfire "training



rifle" for a M40A1 or HTG stock on a centerfire rifle. This stock is exactly the same in all dimensions as the HTG except that the depth of the action area has been reduced to fit the shallower .22 rimfire actions.

**LAZZERONI THUMBHOLE SPORTER**

Like the Lazzeroni Sporter, the Thumbhole was designed by Harry Lawson for heavy recoil rifles. The checkered forend is slightly flared and will accept up to a #7 barrel contour. The pistol grip is checkered and slightly less vertical with a small palm swell and right hand tilt.

This stock was designed by the famous Harry Lawson and was specifically made for heavy recoil rifles. The forend is checkered and slightly flared to accommodate the larger barrel (up to a #7) contour of the large caliber rifles. It has a

**LAZZERONI SPORTER**

high, roll-over Monte Carlo style cheekpiece, a small palm swell and checkered pistol grip, as well as a small amount of cast off. All features combine to lessen felt recoil. Available in right and left hand models for Remington style actions only.



It has a roll-over cheekpiece with a small Monte Carlo and a small amount of cast off. Available in right hand only. Will accept a variety of actions, including Remington, Winchester, Sako, Savage, McMillan and others.

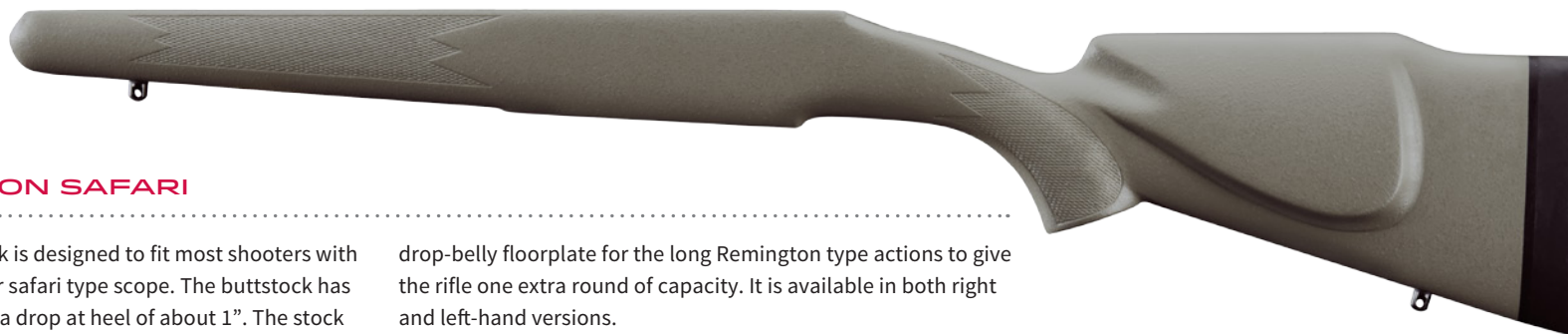




### INTERARMS MARK X

This classic style stock has a straight comb and a small cheekpiece with some cast off. The forend will accept custom barrels up to a #5 contour. It has crisp checkering appropriate for a classic stock. We offer completely finished “custom-drop-in” stocks for the Interarms Mark X action only. We do have inletting programs for most of the FN and 98 variations, but because of the

many styles of bottom metal, custom bolt handles and safeties, we do not offer pre-finished drop-in stocks for them. We only offer 95% inletted blanks for gunsmiths to finish fitting and finishing, or we offer full installations in our shop. Available in right or left hand.



### NEW REMINGTON SAFARI

This low Monte Carlo stock is designed to fit most shooters with a low mounted low-power safari type scope. The buttstock has about 3/8” of cast off and a drop at heel of about 1”. The stock is designed as a “drop-belly” stock specifically for the Sunnyhill

drop-belly floorplate for the long Remington type actions to give the rifle one extra round of capacity. It is available in both right and left-hand versions.



### NEW COMPACT

A very slim straight classic design, this stock is made in the same molds as the Hunters EDGE stock. It is made with conventional fiberglass construction and is available in all our molded-in camo and marble gel-coat patterns and colors. It is a straight ambidextrous stock that may be used both right and left-handed.

It may be inletted for any Remington 700 or Model 7 action in BDL or blind magazine configuration. It is available for Savage actions in blind magazine only. The slender forend will accept most factory sporting barrel contours and custom barrels up to about a #3 Douglas with a cylinder length of less than 2”.



### NEW TACTICAL HUNTER

The Tactical Hunter is a hybrid of hunting and tactical stock designs. It is a modified version of our famous M40A1 HTG stock. The Tactical Hunter has a slightly wider, deeper and more rounded forearm. The forearm has a more pronounced slant on the bottom for height

adjustments when used with bags or shooting sticks. This gunstock is a straight ambidextrous style that may be inletted and used both right and left-handed. It is available with or without an integral adjustable cheekpiece.



#### Adjustable Tactical Hunter

Available with adjustable integral cheekpiece.



### GAME SCOUT

The Game Scout design is a duplicate of the Remington Classic stock but with the popular A-3 vertical pistol grip. This gives McMillan A-series stock owners a smooth transition from their tactical stock to a compact hunting stock. It is an ambidextrous

stock and can be inletted for most right hand and left hand Remington type actions and for barrel contours up to about a #5 Douglas or Remington Varmint size. It can also be ordered with either of the optional integral cheekpieces.

### A-3® SPORTER

The A-3 Sporter design is based on customer demand. For years, shooters have purchased McMillan's "A" series tactical stocks as precision rifles. Because McMillan's "A" series are basically designed as prone stocks, the company received numerous requests for a version of the tactical stocks that retained its comfortable vertical pistol grip but was more suited to general hunting and offhand use. The A-3 Sporter is a variation of McMillan's A-3 tactical stock but with the drop-at-heel lowered from 3/8" down to 1" for better stock position on the shoulder for

offhand and sitting use. The forearm has been curved in at the top to a "semi-beavertail" type for a more positive grip when hand holding the rifle. The pistol grip is the same as the A-3 and Adj. A3-5 stocks. It is an ambidextrous stock and can be inletted for most Remington 700 and Savage type actions. The forearm can be inletted for sporting barrel contours up to a Remington Varmint or #5 Douglas type contour. It is an excellent stock for general hunting and field varmint use with the famous "A" series type pistol grip.





## MCMILLAN THUMBHOLE

This stock design is for Remington 700 type and Savage blind magazine type actions. It has a more conventional and vertical pistol grip than our Lazzeroni Thumbhole and a slightly lower

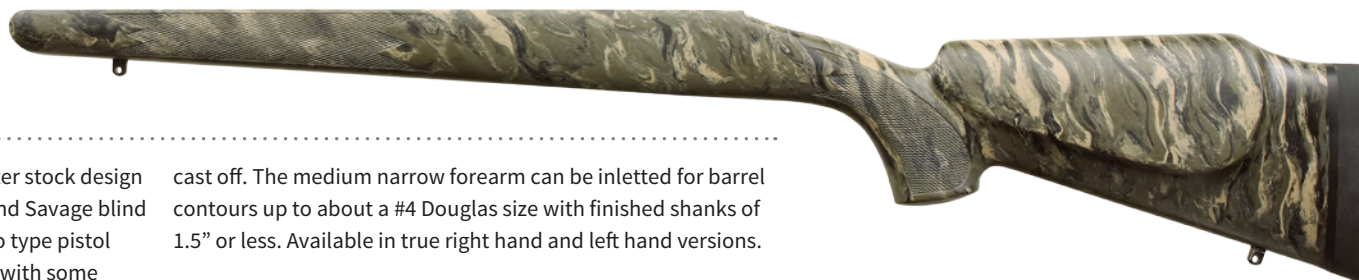
comb at the front. The medium width forearm can be inletted for sporting contours up to a Remington Varmint and #5 Douglas type contour. Available in right hand only.



## MCMILLAN HUNTER

This stock is a variation of our popular Sako Hunter stock design and is modified to fit most Remington 700 type and Savage blind magazine type actions. It has the sculptured Sako type pistol grip with palm swell and a Monte Carlo type butt with some

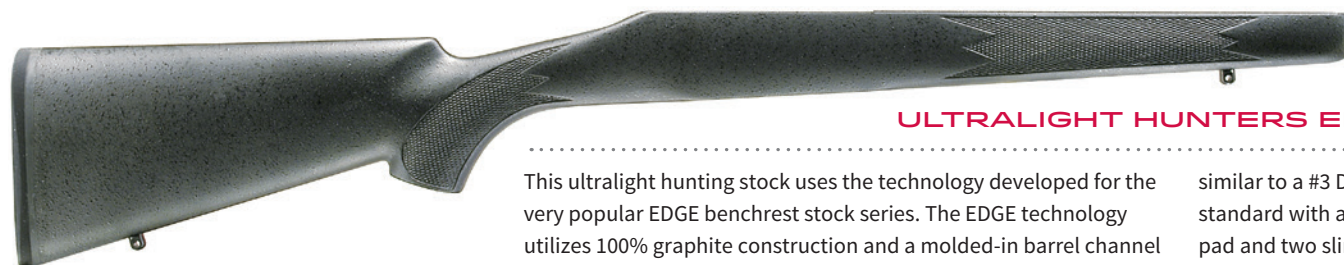
cast off. The medium narrow forearm can be inletted for barrel contours up to about a #4 Douglas size with finished shanks of 1.5" or less. Available in true right hand and left hand versions.



## REMINGTON VARMINT

We have refined our Remington Varmint stock in response to your requests for a higher comb that accommodates the large bell varmint scopes. In addition to the higher comb, the stock includes conventional checkering, a palm swell on

the pistol grip, and a semi-beavertail forearm about 2" wide. It is an ambidextrous stock that may be inletted for any right or left hand Remington action. It will take barrels up to a #7 Douglas contour.



## ULTRALIGHT HUNTERS EDGE® REMINGTON / SAVAGE

This ultralight hunting stock uses the technology developed for the very popular EDGE benchrest stock series. The EDGE technology utilizes 100% graphite construction and a molded-in barrel channel for stiffness, strength and ultralight weight. It is a slim classic style and may be inletted for any right or left hand Remington 700 or Model 7 action in BDL or blind magazine configuration. The Hunters EDGE can also be inletted for all older Savage centerfire actions, including long, short, left and right hand. The slender forend will accept up to a factory magnum barrel contour or custom barrel

similar to a #3 Douglas or smaller. This all-graphite stock comes standard with aluminum pillars, a 1/2" Pachmayr Decelerator recoil pad and two sling studs in any of our painted colors. The finished stock will weigh in at 22-24 ounces, depending on the action cutout. It is not available in molded-in camo or marble finishes in order to save weight. Though an ultralight, it is still guaranteed to handle the recoil of all magnum cartridges through .300 Win Mag.

**EDGE®**  
Evolutionary Design. Graphite Engineered.

## OUR STOCKS FIT THESE REMINGTON ACTIONS

### MODEL 700:

Right or left hand: long or short action (calibers .223 to .308 and .350 Rem mag and .300 SUM are short actions); calibers .270 to .416 are long actions.

### MODEL 40X:

Right or left hand; single shot or repeater. Any Remington stock can be made for a 40X as long as the barrel contour is not too large.

### MODEL 788:

Right or left hand, caliber (which will indicate which length of action you have). Any Remington stock can be made for a 788.

### MODEL 7:

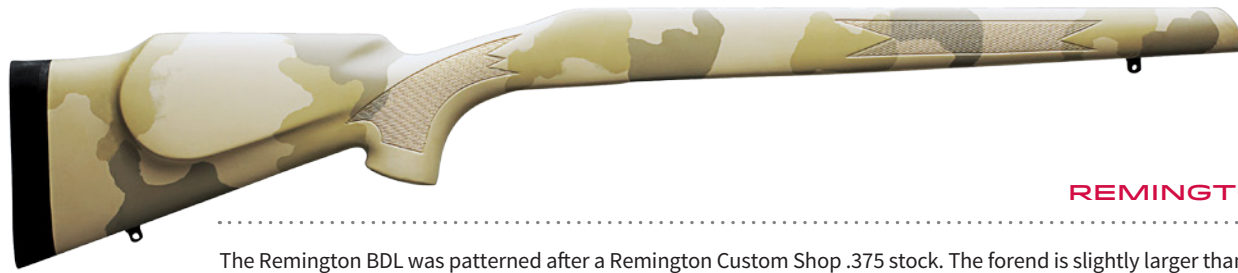
Any Remington stock can be inletted for the Model 7 action. As the diminutive Model 7 action is usually paired with a carbine length barrel, we recommend our trim Model 7 stock for optimum aesthetics.

### MODEL 600 & 660:

Any Remington stock can be used for both of these models. However, because each of these models was equipped from the factory with a 18" or 20" barrel, we recommend that you use the Model 7 for the Model 600 since it is the only stock we offer with a short forend. All 600's must be converted to an ADL trigger guard.

### MODEL 721 & 722:

Any Remington stock can be made for these actions. However, since the bottom metal is not a functioning floorplate and does not fit as well as we would like, we highly recommend that you convert to a blind magazine with a standard ADL trigger guard (available from McMillan), which will make the rifle more attractive.



REMINGTON BDL

The Remington BDL was patterned after a Remington Custom Shop .375 stock. The forend is slightly larger than the factory stock and can accommodate up to a #5 barrel contour for right hand configurations. The left hand version is slimmer and will accommodate up to a #4 barrel contour. It may be used with long or short 700 actions, ADL (blind magazine) or BDL (hinged floorplate) and as a single shot using a Remington ADL trigger guard. It can also be used for 721, 722, and 788 actions.



### Adjustable HTG

Available with adjustable integral cheekpiece.

## HTG GENERAL PURPOSE HUNTING

The General Purpose Hunting (HTG) is the original M40A1 Marine Sniper Rifle stock as originally designed by McMillan for a heavy barrel Remington 700. It can be used for either short or long actions, as well as ADL (blind magazine), BDL (hinged floorplate), and most detachable box magazine systems. It will take any barrel contour up

to a #8. This stock can also be used for most Remington, Winchester, and Savage actions. The HTG is available with or without texture on forend and pistol grip. Available in right and left hand. It can be ordered with either of the optional integral cheekpieces.



## REMINGTON MOUNTAIN RIFLE

The finely designed Remington Mountain Rifle is a classic stock with a cheekpiece that can be used as a replacement for any factory mountain rifle. It is also ideal if you plan to convert

a standard ADL or BDL rifle to the slimmer lines of a mountain rifle. It will accept any factory barrel contour up to the magnum or a #3 custom barrel. Available in right hand only.





### REMINGTON HUNTER

The Remington Hunter is a beautifully designed stock with a Monte Carlo cheekpiece as well as a small palm swell. The uniquely designed fine line checkering adds to the “custom” look of this stock. This stock is patterned after the

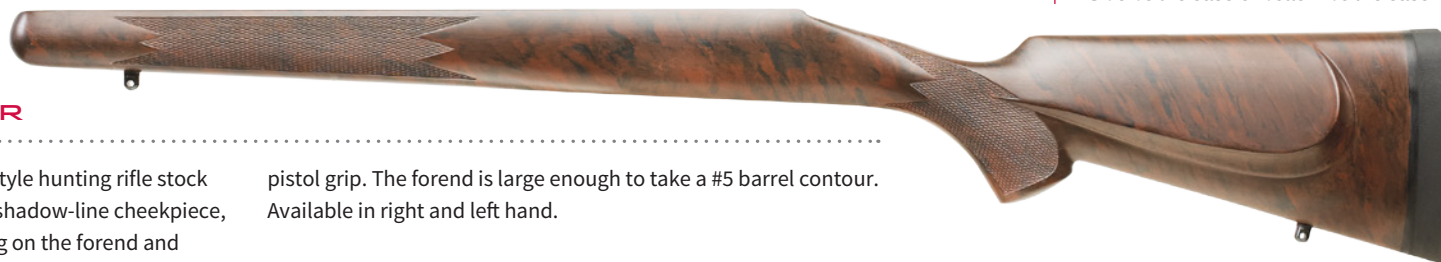
factory Sako 75 varmint and has been adapted specifically for Remington 700 actions. It has a wide forend that will accept up to a #8 barrel contour. Available in right and left hand.



### REMINGTON CLASSIC

The Remington Classic is an exact factory duplicate. It can be used with both the long and short 700, 721, 722, 788 and 40X actions. This stock is available for ADL (blind magazine) or BDL

(hinged floorplate) and as a single shot using an ADL trigger guard. It will accommodate up to and including a #5 barrel contour. Available in right and left hand.



### REMINGTON SPORTER

The Remington Sporter is a fine, classic style hunting rifle stock with a traditional design that includes a shadow-line cheekpiece, straight comb, and borderless checkering on the forend and

pistol grip. The forend is large enough to take a #5 barrel contour. Available in right and left hand.



### XP-100

This is an adaptation of the original plastic factory stock found on the XP-100. The forend has been widened to accept heavy competition barrels and includes an integral trigger guard in the design. This is an ambidextrous stock.



### REMINGTON MODEL 7

The Remington Model 7 is an exact copy of the factory original stock. It is a classic style stock without a cheekpiece and has a schnabel forend. This stock is designed for the Model 7 but can be used with most Remington actions. The Model 7 will take up to a #3 barrel contour. Available in right and left hand.

## FITTING YOUR SAVAGE ACTION

All Savage barreled actions will fit into our Remington style stocks. However, there are many action types on Savage rifles in use today. Subtle differences in vintage and model will have an impact on the inletting program we use for your stock.

Here are some of the details we need in order to help you with a new stock for your Savage rifle. Give us a call and we can help you identify your action type.

- Model number.
- Magazine type: blind, detachable box, etc.
- Placement of magazine release button.
- Guard screw spacing.
- Staggered feed or center feed.
- Short or long action length.
- Old style trigger or newer Accu-trigger.
- Side bolt release or bottom bolt release.

## RUGER R

The Ruger R is a copy of the standard factory issued stock. It is a classic stock without a cheekpiece and can be shot right or left-handed. It can be inletted for any standard Ruger Model 77 action with tang safety, either short or long, and will accept any

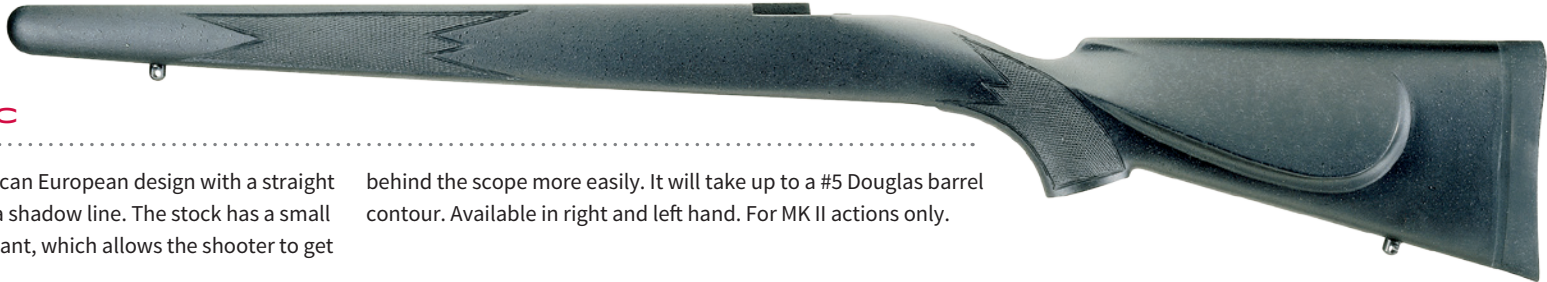
barrel contour offered by the factory, as well as custom barrels up to and including a #5 Douglas. The Ruger R will not accept MK II actions.



## MARK II CLASSIC

The Mark II Classic is an American European design with a straight comb and a cheekpiece with a shadow line. The stock has a small amount of cast off as well as cant, which allows the shooter to get

behind the scope more easily. It will take up to a #5 Douglas barrel contour. Available in right and left hand. For MK II actions only.



## MARK II HUNTER

The Ruger Mark II Hunter has a Monte Carlo cheekpiece and a palm swell. It also has a small amount of cast off and cant, which makes for easier target acquisition. The forend of this stock is very narrow

and will take up to a #4 Douglas barrel contour with a short barrel cylinder. The stock is available in right and left hand. For MK II actions only.



## MARK II VARMINT

The Ruger Mark II Varmint, with its semi-beavertailed forend, is made for use with most Ruger actions. This stock has a Monte Carlo comb, but no cheekpiece, allowing it to be shot right or left-handed. This

stock is one of the more popular stock in the McMillan line. It will accept up to a #8 Douglas contour. Available in right and left hand.

## NEW COMPACT

A very slim straight classic design, this stock is made in the same molds as the Hunters EDGE stock. It is made with conventional fiberglass construction and is available in all our molded-in camo and marble gel-coat patterns and colors. It is a straight ambidextrous

stock that may be inletted and used both right and left hand. The slender forend will accept most factory sporting barrel contours and custom barrels up to about a #3 Douglas with a cylinder length of less than 2".



RUGER

SAKO



### SAKO 75 HUNTER

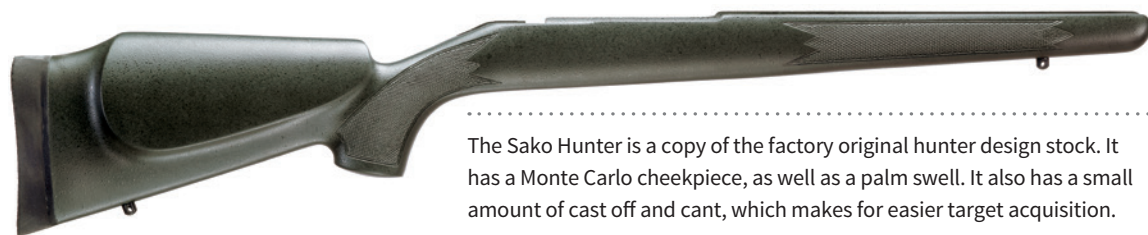
The Sako 75 Hunter is a reproduction of the factory stock, which may be one of the finest hunting stocks on the market today. It comes with a Monte Carlo and cheekpiece, small palm swell and uniquely designed fine line checkering. It can accommodate all factory Sako 75 actions with up to a #5 barrel contour. It is available in right and left hand.

### SAKO 75 SAFARI

The Sako 75 Safari is a straight comb English express style stock specifically for the Sako 75-IV and 75-V actions. It has a well-sculptured cheekpiece and some cast off. The medium forend will accept barrel contours up to a #5A Douglas or smaller. Available in right hand only.

### SAKO 75 VARMIN

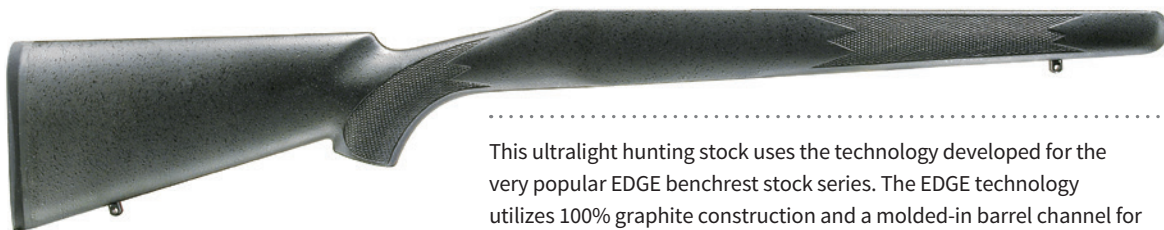
The Sako 75 Varmint features a Monte Carlo cheekpiece, small palm swell and fine lined checkering. The semi-beavertail forend is wide enough to be stable when shooting off sandbags or pedestals, but not as wide as a benchrest stock. This stock is available for Sako 75-I and 75-III actions only and will accept up to a #8 Douglas barrel contour. It is available in right hand only.



The Sako Hunter is a copy of the factory original hunter design stock. It has a Monte Carlo cheekpiece, as well as a palm swell. It also has a small amount of cast off and cant, which makes for easier target acquisition.

### SAKO HUNTER

The forend of this stock is very narrow and will take up to a #4 Douglas barrel contour with a short barrel cylinder. This is a hunter style stock to fit most Sako actions in both right and left hand.



This ultralight hunting stock uses the technology developed for the very popular EDGE benchrest stock series. The EDGE technology utilizes 100% graphite construction and a molded-in barrel channel for stiffness, strength and ultralight weight. It is a slim classic style and can be inletted for most Sako and Tikka actions. It will accept most bottom metal configurations. The slender forend will accept up to a factory magnum barrel contour or custom barrel similar to a #3 Douglas or

**EDGE**  
Evolutionary Design. Graphite Engineered.

### ULTRALIGHT HUNTERS EDGE® SAKO

smaller. This all-graphite stock comes standard with aluminum pillars, a 1/2" Pachmayr Decelerator recoil pad and two sling studs in any of our painted colors. The finished stock will weigh in at 22-24 ounces, depending on the action cutout. It is not available in molded-in camo or marble finishes in order to save weight. Though an ultralight, it is still guaranteed to handle the recoil of all magnum cartridges through .300 Win Mag recoil level.

### MCMILLAN STOCKS FOR SAKO

Sako rifles are easily the most popular of the European rifles. In addition, Sako has produced some of the most aesthetically pleasing stock designs available. The Hunter, Classic, and the Varmint designs can be made for nearly all Sako actions. Since Sako often changes its actions, it is imperative that we have complete information to ensure your satisfaction. Call for details.

## FITTING YOUR SAKO ACTION

Since Sako often changes its actions, we must know the model number to ensure your satisfaction.

Our Sako Hunter, Sako Classic, Sako Varmint, and Sako Thumbhole stock designs can be inletted for most of the older Sako actions from the L461-L579-L61R series through the AI, AII, AV series and the 491-591-691 series. We have a reduced size version of the Sako Hunter for the little L461 and AI actions. The older L46 and L59 actions will not fit our stock designs and we do not offer stocks for them. We can also inlet our Sako stocks for the Tikka 595-695, 55, 65, T3 and Howa/Vanguard series of rifles.

The newer Sako 75 series require their own stock designs and these stocks are so indicated.

The newest Sako 85 series also requires its own designs and we have versions of the Sako Hunter and Sako Classic stocks for this series.

Please call or email for details.



### SAKO THUMBHOLE

This thumbhole stock design is for older Sako rifles in the 491-591-691 series and earlier versions as well as for most Tikka and Howa actions. The Sako Thumbhole is a variation of our McMillan Thumbhole stock. The forearm

can be inletted for barrel contours up to the factory varmint contours and the #5 Douglas type contours. Available in right hand only.



### SAKO CLASSIC

The Sako Classic is an Americanized European design with a straight comb and a cheekpiece with a shadow line. The stock has a small amount of cast off as well as cant, which allows the shooter to get behind the scope

more easily. The Sako Classic can be used for most Sako actions and will accept up to a #5 Douglas contour. Available in right and left hand.



### SAKO VARMINT

The Sako Varmint, with its semi-beavertail forend, is made for use with most Sako actions as well as the PPC barreled action. This stock has a Monte Carlo comb but no cheek-piece, allowing it to be shot right or left-handed.

This stock is one of the more popular stocks in the McMillan line. It will accept up to a #8 Douglas contour and is available in right and left hand.



### SAKO TRG-S

Based on the popular Sako Hunter stock design, this stock is designed specifically for the Sako TRG-S/M-995 rifles. The slender forearm will accommodate up to about a #4 Douglas barrel contour with a cylinder length of about 1.75" or less. This stock requires the use of a

custom steel bottom metal kit made by Pacific Tool and Gauge. This bottom metal requires the use of the rear DBM pressure spring from your factory stock. This floorplate set is available either from us or from Pacific Tool and Gauge. Stock is available for right hand use only.





### GAME SCOUT

The Game Scout design is a duplicate of the Remington Classic stock but with the popular A-3 vertical pistol grip. This gives McMillan A-series stock owners a smooth transition from their tactical stock to a compact hunting stock. It is an ambidextrous

stock and can be inletted for most right hand and left hand Remington type actions and for barrel contours up to about a #5 Douglas or Remington Varmint size. It can also be ordered with either of the optional integral cheekpieces.



### HTG GENERAL PURPOSE HUNTING

The General Purpose Hunting (HTG) is the original M40A1 Marine Sniper Rifle stock as originally designed by McMillan for a heavy barrel Remington 700. It can be used for either short or long actions, as well as ADL (blind magazine), BDL (hinged floorplate), and most detachable box magazine systems. It will

take any barrel contour up to a #8. This stock can also be used for most Remington, Winchester, and Savage actions. The HTG is available with or without texture on forend and pistol grip. Available in right and left hand. It can also be ordered with either of the optional integral cheekpieces.



### Adjustable HTG

Available with adjustable integral cheekpiece.



### WEATHERBY MARK V

The Mark V is a typical Weatherby stock with Monte Carlo cheekpiece and skip line checkering. The forend is somewhat larger than the standard Mark V stocks to accommodate all calibers including the .378 and .460 Weatherby magnums. Available in right and left hand.



### WEATHERBY EXPRESS

The Weatherby Express is similar to the Sako 75 Safari. This English express style stock has a straight comb, a sculptured cheekpiece and some cast off. It is designed specifically for the full size Weatherby Mark V action and the forearm will accept all factory barrels and custom barrels up to a #5A Douglas. Available in right hand only.

**NEW COMPACT**

A very slim straight classic design, this stock is made in the same molds as the Hunters EDGE stock. It is made with conventional fiberglass construction and is available in all our molded-in camo and marble gel-coat patterns and colors. It is a straight ambidextrous

stock that may be inletted and used both right and left hand. The slender forend will accept most factory sporting barrel contours and custom barrels up to about a #3 Douglas with a cylinder length of less than 2".

**GAME SCOUT**

The Game Scout design is a duplicate of the Remington Classic stock but with the popular A-3 vertical pistol grip. This gives McMillan A-series stock owners a smooth transition from their tactical stock to a compact hunting stock. It is an ambidextrous

stock and can be inletted for most right hand and left hand Remington type actions and for barrel contours up to about a #5 Douglas or Remington Varmint size. It can also be ordered with either of the optional integral cheekpieces.

**HTG GENERAL PURPOSE HUNTING**

The General Purpose Hunting (HTG) is the original M40A1 Marine Sniper Rifle stock as originally designed by McMillan for a heavy barrel Remington 700. It can be used for either short or long actions, as well as ADL (blind magazine), BDL (hinged floorplate), and most detachable box magazine systems. It will take any barrel contour up to a #8. This stock can also be used for most Remington, Winchester, and Savage actions. The HTG is available with or without texture on forend and pistol grip. Available in right and left hand. It can also be ordered with either of the optional integral cheekpieces.

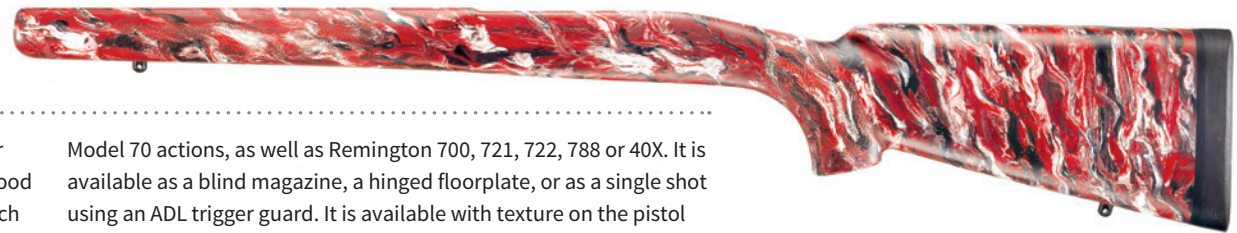
**Adjustable HTG**

Available with adjustable integral cheekpiece.

**WINCHESTER MARKSMAN**

The Winchester Marksman is a large stock primarily designed for bigbore competition. The Winchester Marksman makes a very good varmint stock. This classic stock doesn't have a cheekpiece, which allows it to be shot either right or left-handed. It will accept all

Model 70 actions, as well as Remington 700, 721, 722, 788 or 40X. It is available as a blind magazine, a hinged floorplate, or as a single shot using an ADL trigger guard. It is available with texture on the pistol grip and forend. It will accept up to a #8 contour.







### PRE-64 MONTE CARLO

The Pre-64 Monte Carlo is a factory duplicate stock. It has a raised comb suitable for use with a scope. This stock can be used for any Pre-64 or late Model 70 barreled action and will accept up to a #4 barrel contour.

### MCMILLAN STOCKS FOR MONTANA RIFLEMAN

Most Winchester stock designs can also be inletted for the Montana Rifleman series of actions.



### WINCHESTER FEATHERWEIGHT

The Winchester Featherweight was the stock used by USRAC on the Winlite Featherweight rifles. This stock has a straight comb and no cheekpiece, thin pistol grip and thin schnabel forend. It can be used

for either long or short actions as well as featherweight or sporter barrel contours. This stock has nice checkering and will accept up to a #3 contour. Available in right and left hand.



### WINCHESTER CLASSIC

The Winchester Classic is the stock used for the Winchester Winlite rifle. This stock has a classic comb, no cheekpiece, and is easy to handle. It is available for short or long Model 70 actions as well as featherweight

or standard sporter barrel contours. It will accept up to a #5 contour. The stock has no checkering. Available in right and left hand.



### WINCHESTER VARMINT

Based on our very popular Remington Varmint stock, this design was produced in response to multiple requests for a Winchester varmint stock. It is ambidextrous and may be inletted for any right or left hand

Winchester or Montana action. It has a small palm swell pistol grip and a semi-beavertail forearm about 2" wide. The Winchester Varmint will take barrels up to a #7 Douglas contour.

## IDENTIFYING YOUR WINCHESTER RIFLE

### PRE-WAR:

This model differs from the newer models in that the very rear of the receiver is shaped like a clover-leaf and is often referred to as a Model 70 with a clover-leaf tang. As the name indicates, it was produced prior to World War II.

### PRE-64:

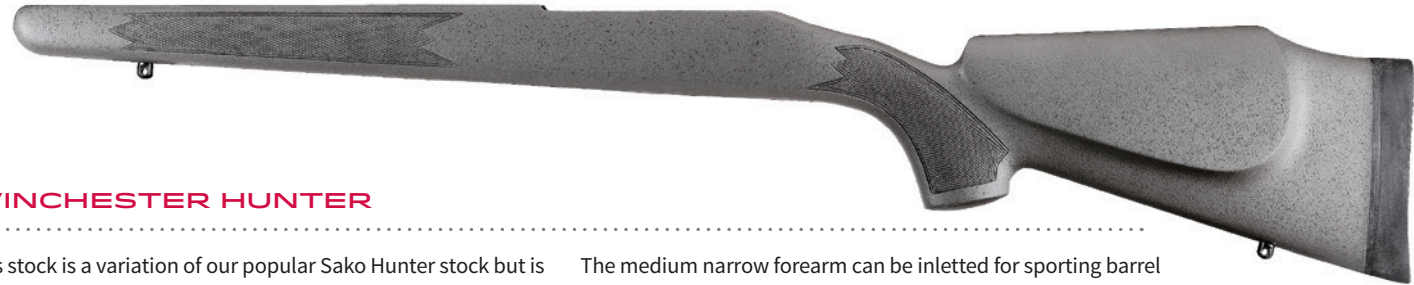
This Model 70 was produced prior to 1964 and is identified by the circular tool marks on the front bridge (where scope mounts attach). Although these rifles look very much like the modern Model 70, the stocks and the inletting are not interchangeable. Putting a Pre-64 rifle into a late model stock will require a bit of minor modification of the trigger bow.

### LATE MODEL 70:

Whether or not Winchester called them "the New Pre-64," all Model 70's produced after 1964 are late Model 70's.

### THE "NEW PRE-64":

This name refers to the fact that the receiver is a "controlled round feed" but everything else about the rifle makes it a "Late Model." Prior to the mid-eighties all Model 70's were "long actions." Since then there are "short" for calibers up to .308 and "long" for the larger calibers. It is important that you indicate which length action you have.



### WINCHESTER HUNTER

This stock is a variation of our popular Sako Hunter stock but is modified for use with most Winchester type and Montana type actions. It has the sculptured Sako Hunter type pistol grip with palm swell and a Monte Carlo type buttstock with some cast off.

The medium narrow forearm can be inletted for sporting barrel contours up to about a #4 Douglas type with a shank length of 1.5" or less. It is available in right hand only.



### MODEL 70 HUNTING

The Model 70 Hunting stock duplicates the factory standard Model 70 stock with a Monte Carlo cheekpiece. It can be used for any late Model 70 as well as any Pre-64 Model 70. It will

accept up to a #5 barrel contour and may come as a blind magazine for the Ranger Series Model 70's, as well as with a standard hinged floorplate. Available in right hand only.



### WINCHESTER SAFARI

The Winchester Safari is an English safari style stock designed specifically for the Model 70 long action with a Sunny Hill drop belly floorplate. It has a straight comb with a cheekpiece

and some cast off. The medium size forearm will take up to a #5A Douglas barrel. Available in right hand only.



### WINCHESTER EXPRESS

This stock is a variation of our popular Winchester Safari stock but with the depth of the action area reduced to work with standard factory floor plates and magazine capacities. It is designed to fit most of the Winchester type and Montana type actions. The checkering has been replaced with textured panels

on the forearm and pistol grip for a more positive gripping surface in the field. The forearm can be inletted for barrels up to about a #5 Douglas type but will not accept the straight taper target barrels. Available in right hand only.



### WINCHESTER SUPERGRADE

The Winchester Supergrade is an exact copy of the factory Supergrade, which has a classic straight comb with cheekpiece and fine checkering. Its medium-width forend will accept up to

and including a #5 barrel contour, which makes this an excellent choice for large caliber rifles. Available for all Winchester Model 70 actions in right and left hand.



**EDGE**  
Evolutionary Design. Graphite Engineered.

### ULTRALIGHT HUNTERS EDGE® WINCHESTER / MONTANA RIFLE COMPANY

This ultralight hunting stock uses the technology developed for the very popular EDGE benchrest stock series. The EDGE technology utilizes 100% graphite construction and a molded-in barrel channel for stiffness, strength and ultralight weight. It is a slim classic style and may be inletted for any Winchester 70 and Montana 1999 actions in right or left hand, long or short orientation. It will accept most bottom metal configurations. The slender forend will accept up to a factory magnum barrel contour or custom barrel similar

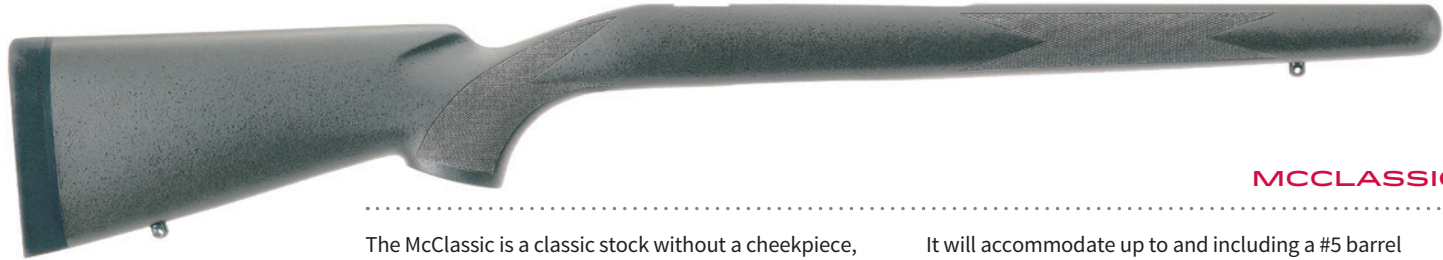
to a #3 Douglas or smaller. This all-graphite stock comes standard with aluminum pillars, a 1/2" Pachmayr Decelerator recoil pad and two sling studs in any of our painted colors. The finished stock will weigh in at 22-24 ounces, depending on the action cutout. It is not available in molded-in camo or marble finishes in order to save weight. Though an ultralight, it is still guaranteed to handle the recoil of all magnum cartridges through .300 Win Mag recoil level.

## HOW WE BUILD THE WORLD'S PERFECT RIFLE STOCK

Every McMillan stock begins in a mold where the outside protective layer of gelcoat is applied. Then fiberglass cloth is laid up by hand for strength, as opposed to sprayed through a chop gun. This shell is cured under pressure and heat for maximum strength and minimum weight. We fill the shell with a light composite material for vibration dampening and additional strength. In the action area, we use a tough, denser fill.

The stock is then precision-inletted for your action on a CNC machine, hand sanded and when requested, painted with an industrial finish.

This creates a weatherproof stock that will consistently hold point of impact in all extreme weather conditions, unlike wood or injection molded plastic. Also, a McMillan stock is tough enough to spend a lifetime in combat conditions with no loss of integrity, as our elite armed forces will attest.



**MCCLASSIC**

The McClassic is a classic stock without a cheekpiece, and was designed specifically to fit the square tang type actions. It works extremely well with the Shilen DGA, Stolle Kodiak, Nesika Bay, BAT and Hall custom actions.

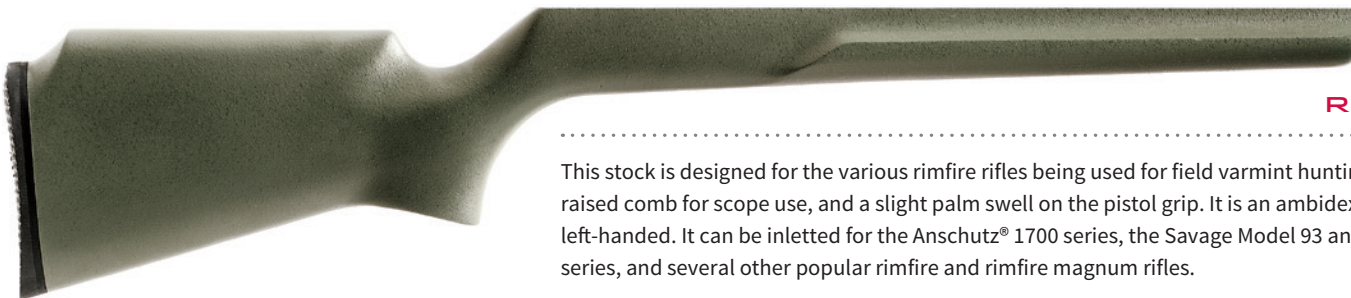
It will accommodate up to and including a #5 barrel contour. This stock will not work properly with Remington 700, Winchester 70 or Sako actions. Available in right and left hand.



**NESIKA BAY VARMINT**

We redesigned the family of varmint stocks that includes the Remington Varmint for Remington 700 actions and the Nesika Bay Varmint for the Nesika Bay, BAT, Kodiak, and other actions with benchrest type rear tangs. We added a slightly raised Monte Carlo comb for a better cheek weld

with bigger scopes, and added checkering panels to the forend and pistol grip for better non-slip handling. These stocks are ambidextrous and may be inletted for either right or left hand actions. The forend will take barrels up to 1.25" in diameter.



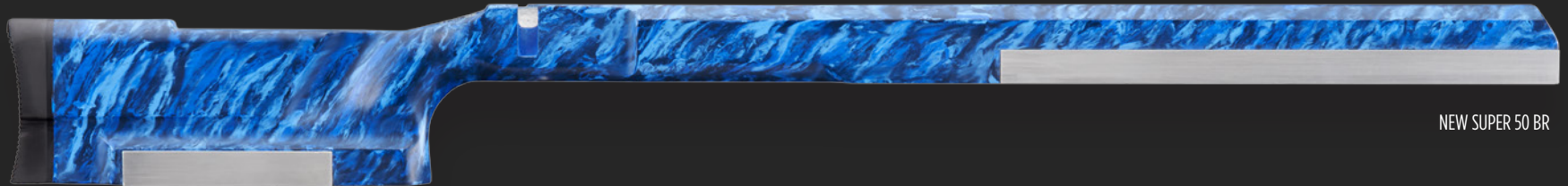
**RIMFIRE MAGNUM VARMINT**

This stock is designed for the various rimfire rifles being used for field varmint hunting. It has a 2" wide semi-beavertail forearm, a raised comb for scope use, and a slight palm swell on the pistol grip. It is an ambidextrous stock and may be used both right and left-handed. It can be inletted for the Anschütz® 1700 series, the Savage Model 93 and MK II actions, the CZ452 series, the Ruger 77/22 series, and several other popular rimfire and rimfire magnum rifles.



SHOOT TO WIN.®





NEW SUPER 50 BR

COMPETITIVE SHOOTERS ARE THE TOUGHEST,  
MOST DEMANDING CLIENTELE ANYONE COULD  
EVER HAVE. **WE LOVE EVERY ONE OF YOU.**

Competitive shooting is the ultimate pursuit of excellence. It is an unforgiving discipline where any hidden flaws in your equipment are exposed on paper, and subtracted from your score.

When you buy a McMillan stock, you get superior ergonomics, better harmonics, and more accuracy, stiffness and strength. Plus we offer the biggest selection of competition styles available. No matter what your event, we have the right stock to fit you.

Our heritage began by catering to competitive shooters. Over the years, we hold more world records; national and international titles; and Olympic medals than any other synthetic stock manufacturer.

No, you can't buy a winning score. You still have to earn that. But good equipment can turn a top shooter into an even better one.

Never compromise. Demand McMillan for your next high performance shooting machine.

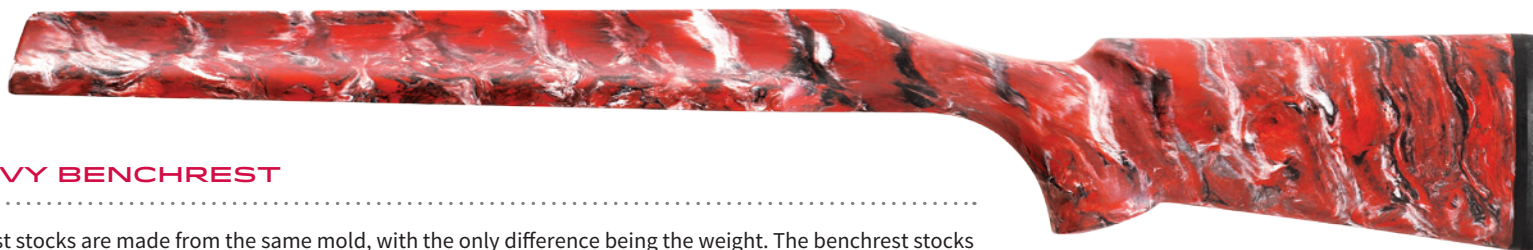
COMPETITION





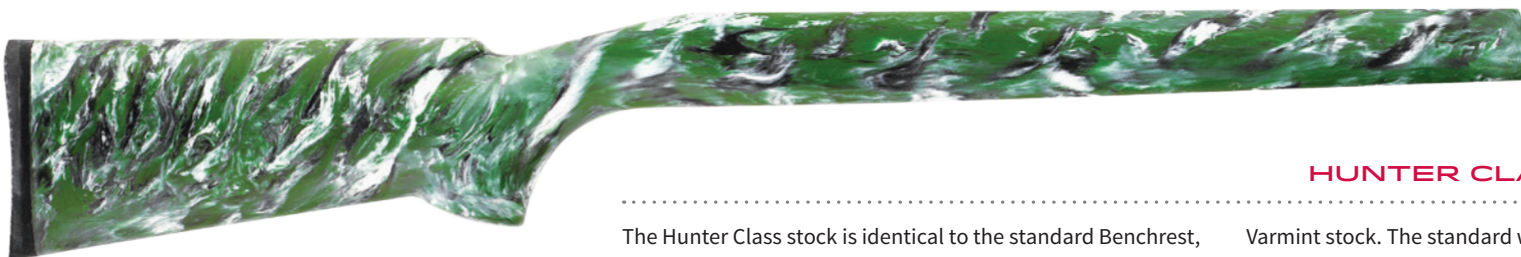
## WORLD RECORD GROUP

The world record for the smallest 100 yard benchrest group was shot in 1973 by Mac McMillan using a hand built prototype McMillan rifle with an early McMillan stock. The 5-shot group is a mere 0.009" center to center and was measured with a 60x microscope for verification. The actual record group which stood for 39 years, plus the McMillan rifle that shot it, hang in our museum.



## LIGHT AND HEAVY BENCHREST

The Light and Heavy Benchrest stocks are made from the same mold, with the only difference being the weight. The benchrest stocks vary in weight from just under two pounds up to four pounds. We can achieve a requested weight plus or minus two ounces.



## HUNTER CLASS BENCHREST

The Hunter Class stock is identical to the standard Benchrest, except that the flares on the forend have been removed to meet the 2.250 inch requirement. In addition, a Hunter Class stock specifically designed for a Remington 700 or 40X can be ordered. A sporter stock is generally the same as the Light

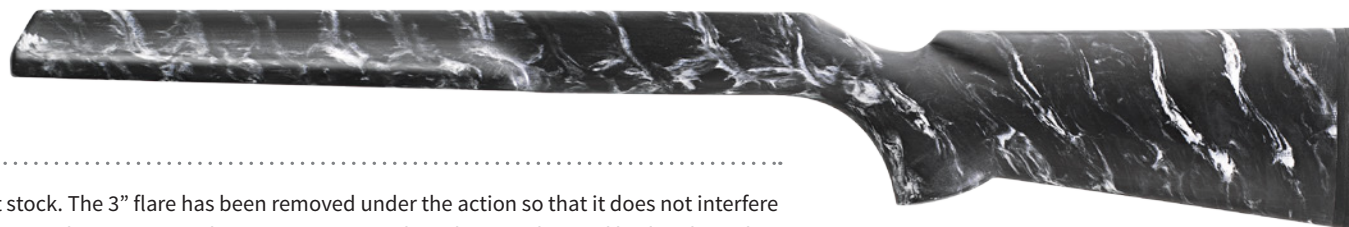
Varmint stock. The standard weight for the Light Varmint and Hunter Class is approximately 1 lb. 12 oz. and the Heavy Varmint is approximately 2 lbs. 6 oz. Camouflage or marble colors and graphite will add 2 oz. Available in right and left hand. Recommended for a blind magazine or single shot only.



### TOOLEY MBR

The Tooley MBR stock, inspired by David Tooley, has gained wide acceptance in the shooting industry and is often duplicated by other stock manufacturers. Designed for 1000 Yard Benchrest shooting, this stock is proven to enhance performance. It has an extra long 3 inch wide forend for extended tracking surface. This stock will accommodate actions or sleeves with a maximum diameter of 1.6 inches. The large straight comb buttstock was designed with the

bottom running at a three degree slant to allow it to move down and away from the face under heavy recoil. This allows the rifle to track extremely well. The MBR is legal for 1000 Yard Benchrest, but not for short range 100-300 yard I.B.S. or NBRSA benchrest. The MBR has a minimum weight of about 3.75 lbs. Available in right and left hand. Recommended for a blind magazine or single shot only.



### MCMILLAN BR-50

The McMillan BR50 is a variation of our standard benchrest stock. The 3" flare has been removed under the action so that it does not interfere with the bolt handle. The forend has been shortened for improved appearance when using 18" to 20" barrels. It can be used both right and left-handed and is primarily designed for the Anschütz® 54, CZ452 and other rimfire actions. It will not accept most centerfire actions.

### ANSCHUTZ® BR-50

The Anschütz® BR-50 stock has a vertical pistol grip while the buttstock offers a high roll-over type Monte Carlo cheekpiece with a flared 3 inch forend. It was specifically designed for the 2000 series Anschütz® receivers but can be utilized for most smallbore actions.





**EDGE***Evolutionary Design. Graphite Engineered.***ULTRALIGHT BENCHREST EDGE® LV AND HV**

At just 22 oz., the McMillan Ultralight Benchrest EDGE is 1/3 lighter and much stiffer than a traditional benchrest stock. The outer shell is 100% graphite for low weight and stiffness. The radical forend is engineered like a structural beam for extra stiffness in the vertical axis. A molded-in barrel channel increases stiffness. Oversize siderails resist torque and improve tracking in a front rest. An ultra low center of gravity improves stability. The adjustable weight system in the buttstock lets you fine tune weight and balance, but is not designed for converting from light varmint to heavy varmint. The receiver area is filled with a proprietary lightweight, strong material. The barrel channel will accommodate the largest legal benchrest contour. There is a 1/2" flat on the buttstock, which is tapered to meet the minimum angle required by both the NBRSA and the IBS. Stocks are available inletted and un-inletted. We have two molds, one for Remington style tang receivers and one for square tang receivers (Panda, Viper, Nesika, Grizzly, Hall). These stocks can also be made in heavy varmint weights with conventional fiberglass construction.



Unique vertical side walls resist torque and aid tracking.



Fine tune-able weight system.

**EDGE***Evolutionary Design. Graphite Engineered.***ULTRALIGHT BENCHREST EDGE® HBR**

Adapted from the EDGE benchrest stock, the EDGE HBR is specifically designed for Hunter Class competition. The forend has been narrowed to 2.238" by removing the lower rail from the EDGE stock, leaving a solid platform with 1/2" tall sidewalls. The buttstock has a 1/2" flat at the minimum required angle. Unlike the standard Benchrest EDGE, the EDGE HBR does not incorporate a weight system and will be filled so that you can adjust the length of pull. Made of a graphite shell and proprietary light but strong fill, the stock weighs in at 22 ounces. Superior tracking and stability makes this stock the choice of top Hunter Class competitors around the country. We have two molds – one for Remington style tang receivers and one for square tang receivers (Panda, Viper, Nesika, Grizzly, Hall).

**ULTRALIGHT EDGE® HBR .22 SPORTER**

This is a version of the EDGE HBR specifically adapted to meet the rules of the WRABF for .22 International Sporter competition. Designed primarily for the Anschütz 54, 64 and 1700 series rifles, this stock has a forearm that is about 2.24" wide and both the forearm and bottom of the buttstock have the required slight convex curve underneath. The bottom of the action area has a slight taper to accept the floorplates of the 1700 series and 64 sporter repeater actions. As with all stocks that use McMillan's EDGE technology, the shell is 100% graphite, the receiver area fill is a special lightweight yet strong proprietary formulation, and the molded in barrel channel produce a stock that is stiffer, yet lighter than conventional benchrest stocks.



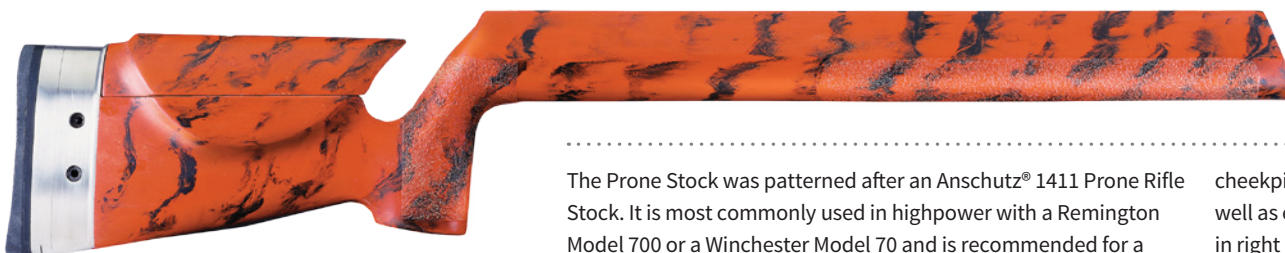
### BAKER SPECIAL

The Baker Special was designed by high power shooter Billie Baker using a Winchester Marksman as a starting point. He first extended the beavertail forend to the rear and tapered it back through the receiver area to increase stiffness. He then added a shallow drop belly so that Model 700's and Model 70's could have a custom long magazine box fabricated to hold five rounds in the magazine for rapid fire. It is available with a vertically adjustable

comb and as a blind magazine only. It may have the 2-way or 3-way buttplate fitted and a forend rail, but will not accept the spacer system. It is ambidextrous and may be inletted for both right and left hand. It may also be inletted for the CZ550 magnum with heavy target type barrels, but requires some custom work on the rear tang of the stock.

### DID YOU KNOW...

Because competition stocks were designed to be as accurate as possible, most of them double as tactical stocks. The Prone, Baker Special, Silhouette, Big Mac and M1A stocks have all been used in military or law enforcement applications.



### PRONE

The Prone Stock was patterned after an Anschütz® 1411 Prone Rifle Stock. It is most commonly used in highpower with a Remington Model 700 or a Winchester Model 70 and is recommended for a blind magazine or single shot only. It comes with an adjustable

cheekpiece and can be fitted with a 3-way adjustable butt plate as well as either a Freeland or Anschütz® type handstop rail. Available in right or left hand.

### RIMFIRE PRONE

The Rimfire Prone stock follows the lines of the standard prone, but is proportioned at 7/8 scale for most rimfire rifles. As an adjustable

stock, it is also suitable for anyone who prefers a trimmer grip and forend. Available in right hand only.



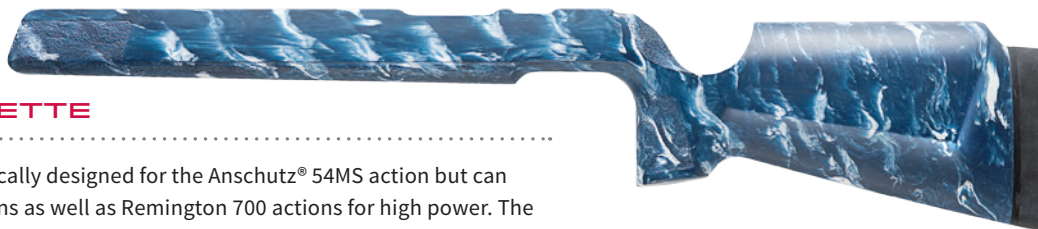
### F-CLASS

Our F-Class stock is a breakthrough design that provides an ultra low profile, 3" wide forend to achieve the lowest possible center of gravity on a front rest, reducing gun torque. The bottom of the buttstock is perfectly parallel to the forend and has a 5/8" flat for improved performance in a rear sandbag. The adjustable cheekpiece is available with an ambidextrous or true right hand or true left hand cheekpiece. The butt will accept all McMillan tactical accessories. The generic rear tang will accept most custom actions. Minimum weight is about 4 pounds.



### ANSCHUTZ® SILHOUETTE

The Anschutz® Silhouette was specifically designed for the Anschutz® 54MS action but can be adapted for other smallbore actions as well as Remington 700 actions for high power. The Anschutz® Silhouette can also be inletted to accept a heavy barreled Ruger 10/22, as is often used in the Sportsman Team Challenge competition. Available in right and left hand.



### MASTER SILHOUETTE

The Master Silhouette is based on input from silhouette competitors. It offers the basic Anschutz® design but with a higher comb, a shortened forend and a more sculptured pistol grip. The generic rear tang can be inletted for most rimfire and some centerfire actions. Available in right hand only.



### SILHOUETTE / STC

Metallic silhouette is a sport that is fired offhand at targets out to 500 meters. Our silhouette stocks are specifically designed for offhand shooting and will conform to current rules. Our STC stock is designed for the Sportsman's Team Challenge, a fun action sport that has enjoyed network television coverage.

### STC (SPORTSMAN'S TEAM CHALLENGE)

The STC stock is provided for this unique form of competition. It is a modified version of the Anschutz® Silhouette that will accept a Ruger 10/22. The standard inletting is for a .920" to

.930" diameter barrel. It is also acceptable for metallic silhouette competition, if you would like to use a 10/22. Available in right hand only.



### STC INTIMIDATOR

The STC Intimidator stock was specifically designed for the Sportsman's Team Challenge. It is the best offhand stock on the market today. Being fully adjustable with 3-way adjustable butt plate and adjustable cheekpiece, this stock will fit all shooters male

and female. The uniquely designed forend allows for conventional or action type shooting. It has 3 inch deep belly for position style shooting. Available in right or left hand for Ruger 10/22 actions only.

**NEW SUPER 50 BR**

The primary feature of this new .50 caliber benchrest stock is a machined aluminum shoe on the bottom of the forearm and buttstock that are machined true to each other and to the action. The forearm shoe is available in either a 3.5" width

or a 5" width. This stock is approximately 44" long and has a forearm about 20 3/4" long from the front of our .50 caliber action. This stock has a minimum weight of about 9 lbs. as a light gun stock and a maximum weight of about 18 lbs. as

a heavy gun stock. It is fully ambidextrous stock and may be inletted and used both right and left-handed.

**50 HBR**

The 50 HBR is another participant of 50 Caliber Benchrest shooting. The "Heavy Gun Class" stock will weigh a minimum of 12-13 pounds. It can be used with heavy barrel contours

and current receivers to make a 50 lb. rifle. The forend is 5 inches wide and 2.300 inches deep through the action area. The 50 HBR will accommodate actions or sleeves up to

2.600 inches wide. The revolutionary feature to this stock is the butt. The bottom of the butt is 2.250 inches wide and is exactly parallel to the forend. Available in right and left hand.

**50 LBR**

The 50 LBR is designed for building rifles in the "Light Gun Class" for 50 Caliber Benchrest shooting. It is similar to the 50 HBR but the forend and the action area have been narrowed to

be the most effective the "light gun" rules will allow. The forend is 3.50" in width and the stock will accept a maximum receiver width of 2.10". It has the same 2.250" wide flat on the bottom

of the butt as the 50 HBR so the same rear bag can be used on both guns. The minimum weight is 6.5 lbs. and is available inletted both right and left hand.





McMillan action with Remington Hunter stock.

### PAINTED FINISHES

For the finest presentation-grade surface, we suggest a painted finish. Six solid paint colors are available.

A speckletone granite finish is also available. Choose any solid base coat color and specify either one or two speckletone paint highlights to create an attractive custom finish.

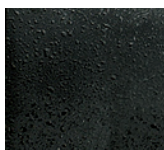
When you order any paint finish, the underlying stock is hand-sanded, primed, and painted to eliminate all surface imperfections. This is the finish most manufacturers specify for the McMillan stocks that are sold with their custom shop rifles.

The paint we use is an industrial grade, non-slip pebble finish similar to that found on power tools, office machines and industrial equipment. This polyurethane paint is the most durable we can find and is suitable for conditions found from the Arctic to the tropics. However, any painted finish will scratch when dragged over rocks, limbs and other hard surfaces. It is impervious to most gun cleaning solvents, but harsh solvents should be wiped off immediately.

### REPAINTING AN EXISTING MCMILLAN STOCK

We can repaint any McMillan stock for our customers at a nominal charge.

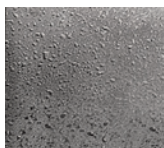
BLACK



BROWN



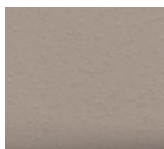
GRAY



OLIVE



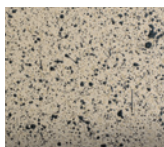
TAN



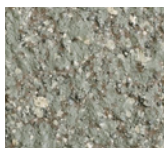
KHAKI



2-COLOR  
SPECKLETONE  
GRANITE FINISH



3-COLOR  
SPECKLETONE  
GRANITE FINISH



**NEW SPECTRE PATTERNS**

The Spectre Series is McMillan's new molded-in finish that mimics aspects of digital camouflage. It is currently available in four different color schemes.



URBAN SPECTRE



WOODLAND SPECTRE



DESERT SPECTRE



ACU SPECTRE

**NEW AMBUSH PATTERNS**

Desert Ambush is the first offering of the Ambush series. The color pattern was developed for the desert terrain and foliage of the Southwestern United States.



DESERT AMBUSH



SAND CAMO

**CAMOUFLAGE PATTERNS**

Eleven basic camouflage patterns are standard order items. The colors are not painted on the surface, but are molded into the stock for durability when used in extreme environments. Many military units specify this finish for their tactical

stocks, with the choice of colors dependent on the part of the world where the rifle will be deployed. Custom camo patterns of any three or four colors are optional at no extra charge.

The camo patterns are randomly generated and no two stocks are the same. Your stock is uniquely yours.



URBAN CAMO



DESERT CAMO



WOODLAND CAMO



RHINO CAMO



McMILLAN CAMO



DARK CAMO



FOREST CAMO



ARCTIC CAMO



COFFEE CAMO



GAP CAMO





2-Color Variation (80/20)



2-Color Variation (50/50)

### 2-COLOR VARIATION

Any marble combination is possible, but the 50/50 and 80/20 two-color marble patterns are most common. The 50/50 is a bolder pattern. The swirls in the 80/20 are a bit subtler in effect.



3-Color Variation (33/33/33)

### 3-COLOR VARIATION

A three-color variation produces a more complex pattern than a two-color variation. Any color percentages are possible, but 33/33/33 and 50/25/25 are most common. The 33/33/33 pattern is bolder. The swirls in the 50/25/25 are a bit more subtle and the principal color is more dominant.

### FLAME MARBLE™

Our Flame Marble™ finish is made using three colors that transition from the lightest at one end of the stock to the darkest at the other end. Call for advice on your color selection.



3-Color Flame Marble™

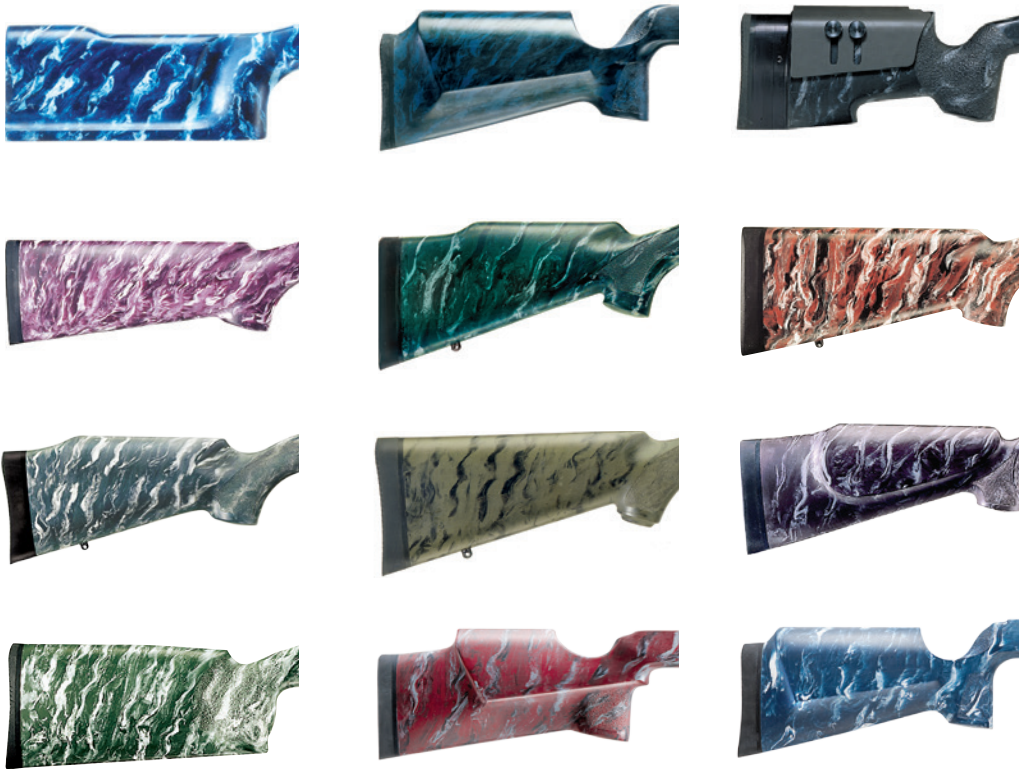
### MARBLE FINISHES

A marble finish is created by swirling two or three different colors into the surface of the stock. The result is a beautiful effect that is unique to your stock. McMillan pioneered this finish, which has become a familiar hallmark of our brand.

The most popular marble finishes are shown on these pages. Virtually any color combination is possible, but we strongly suggest you call us first to discuss your preferences, as some color combinations are inherently more pleasing than others.

Note that a marble finish can be used as an effective camouflage pattern when using olive green, black, gray and other common camo colors.

Each finish is done by hand and it is impossible to duplicate any particular marble pattern. Also, colors will change shades somewhat due to the mixing of colors while the swirling is done. The swirling is totally random and can never be exactly duplicated. Marble stocks may not be returned because of dissatisfaction with the color. However, you may opt to have us paint the stock at our regular price.



Choose any 2 or 3 of the molded-in colors to create a unique swirled marble pattern finish for your custom stock. Literally thousands of different patterns can be created, including any you see in this catalog or on our website. No two stocks are ever made alike as the marbling action is totally random in occurrence.

The colors below are used to create molded-in swirled marble and camo finishes. Solid molded-in colored stocks are not available from McMillan.

|          |  |                |   |              |   |
|----------|--|----------------|---|--------------|---|
| BURGUNDY |   | DARK GREEN     |    | BLACK        |    |
| GRAPE    |   | MEDIUM GREEN   |    | WHITE        |    |
| PINK     |   | OLIVE          |    | DARK GRAY    |    |
| RED      |   | LIGHT GREEN    |    | MEDIUM GRAY  |    |
| ORANGE   |   | WOODLAND BEIGE |    | LIGHT GRAY   |    |
| YELLOW   |  | TURQUOISE      |   | DARK BROWN   |   |
|          |  | DARK BLUE      |  | MEDIUM BROWN |  |
|          |  | MEDIUM BLUE    |  | LIGHT BROWN  |  |
|          |  | LIGHT BLUE     |  | DARK TAN     |  |
|          |  | PURPLE         |  | MEDIUM TAN   |  |
|          |  |                |   | LIGHT TAN    |  |







McMillan TAC®-338 tactical rifle chambered in .338 Lapua Magnum, McMillan A-5 stock with adjustable integral cheekpiece, spacer system, flush cups, bipod, receiver mounted night vision rail, tan paint.



**ADJUSTABLE SADDLE-TYPE CHEEKPIECE,**  
shown with optional three-way adjustable butt system in black anodized finish.



**THUMBWHEEL ADJUSTABLE CHEEKPIECE,**  
with locking thumbscrews. This is recommended for competition rifles with iron or receiver sights where frequent changes are necessary. Shown with spacer system and presentation recoil pad.



**INTEGRAL CLAMP BAR ADJUSTABLE CHEEKPIECE,**  
shown with spacer system and presentation recoil pad. Recommended for scope sighted rifles.



**THREE-WAY ADJUSTABLE BUTT ASSEMBLY**  
Also available in black anodized finish.



**VERTICALLY ADJUSTABLE BUTT ASSEMBLY**



**ADJUSTABLE SPACER SYSTEM**



**SIMS LIMBSAVER RECOIL PAD**

**PACHMAYR DECELERATOR RECOIL PAD**



FOREARM ACCESSORY RAIL FOR FREELAND  
OR ANSCHÜTZ® TYPE ACCESSORIES



PRE-INSTALLED  
MACHINED-IN PILLARS



SEEKINS 3" RAIL



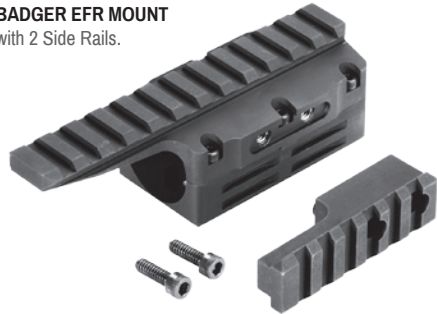
MACHINE SCREW SLING STUDS

FLUSHMOUNT BASE CUPS



WICHITA 1.5" FIXED SLING LOOP

BADGER EFR MOUNT  
with 2 Side Rails.



HARRIS BIPOD  
Adjusts from  
9 to 13 inches.



VERSA-POD bipods mount  
to your rifle sling stud or to  
a built in accessory rail with  
the handstop mount shown  
at the right. The Versa-Pod  
can also mount directly to  
the front of a stock forend  
with a mounting stud. The  
handstop mount and stud  
are sold separately.



VERSA-POD  
MOUNTING STUD



VERSA-POD  
HANDSTOP MOUNT



ANSCHÜTZ® 64 TRIGGER GUARD



REMINGTON ADL TRIGGER GUARD



REMINGTON ADL TRIGGER  
GUARD ULTRA LIGHT



SAKO TRGS M995 DETACHABLE MAG  
BOX SYSTEM



MCMILLAN ALUMINUM HINGED FLOORPLATE



1/2" ALUMINUM  
BEDDING PILLARS



FLUSH CUP  
STUD ADAPTOR



ACCESSORY RAIL  
STUD ADAPTOR



CHAMPIONS CHOICE  
ROUND HAND STOP



QD SLING LOOPS  
1" AND 1.25"



STANDARD PUSH-BUTTON  
SLING LOOPS 1" AND 1.25"



HEAVY DUTY PUSH-BUTTON  
SLING LOOPS 1.25" AND 1.5"





PLANO GUN CASE



HEX HEAD SCREWS



BEDDING KIT



MCMILLAN RANGE HAT  
with McMillan logo. Tan color.

ACCESSORIES FOR MODULAR TACTICAL SYSTEMS: MFS-14® AND BAF



MAGPUL PRS-2



ACE SOCOM 5 POSITION  
ADJUSTABLE BUTTSTOCK



CAR 6 POSITION ADJUSTABLE BUTT

RUBBER BUTT  
PAD FOR CAR



CAR CHEEKPICE



SHORT 4" FOREND ACCESSORY RAIL



LONG 10.75" FOREND ACCESSORY RAIL



PICATINNY SLING ADAPTOR



**1. What materials is a stock made of?**

Each fiberglass stock is made of multi-layers of eight-ounce woven fiberglass cloth, laminated under pressure with epoxy resin. The stock is filled with solid fiberglass in the receiver area and epoxy and glass beads in the forend. Our EDGE ultralight stocks are made with 100% graphite cloth in the shell instead of fiberglass, for less weight and greater strength.

**2. Are your stocks hollow?** The only hollow part of the stock is the buttstock from the rear of the pistol grip to two inches from the end. This area is filled with urethane foam to deaden the sound and absorb vibration.

**3. Do your stocks have a foam core?** No, ours are completely solid and then machine inletted rather than having the receiver area molded.

**4. What colors are available?**

We offer 6 painted solid colors, 11 molded-in camo finishes and a wide variety of marble finishes.

**5. Will the paint chip off?**

Though we use the most durable, catalyzed urethane enamel paint on the market, it is still a paint. As such, it is subject to dings and scratches due to rough conditions and handling. We do guarantee our finishes against adhesion problems but not against normal wear and tear. We will, however, repaint stocks at a reduced price for our customers.

**6. Do you make Kevlar stocks?**

From the testing we have done and the results of some independent testing, we have determined that Kevlar does not improve the quality or strength of our stocks.

**7. Do you use graphite?**

Yes, where added stiffness is desired we do use graphite upon request at an added expense. Our EDGE ultralight stocks are made with 100% graphite cloth in the outer shell as standard.

**8. Why are your stocks more expensive than some?**

We are dedicated to making the very best stocks that we can make. For the most part each one is a custom one-of-a-kind made-to-order item, handmade from the first step. The material, time, labor, and quality control required to do so is reflected in the price of the stock. Also reflected here is the value we put on our hard working employees who are paid good area wages and receive most benefits, including medical insurance, paid vacation and paid holidays.

**9. What method do you use to make your stocks?**

We use the method commonly referred to as hand-laminating. Layers of glass cloth are laid in a mold by hand, then cured under heat and pressure. This adds strength, reduces weight, and eliminates voids compared to other methods of sprayed or molding methods.

**10. What colors are available in the marble finish?**

A marble finish is a combination of two or three colors swirled together to form a marble type

pattern in the surface of the stock. It is possible to use any combination of colors that we stock. We do suggest you look through the catalog or web site to choose a combination that appeals to you.

**11. What is a molded-in finish?**

McMillan produces some stock finishes such as our camouflages and marbles that are actually molded right into the exterior of the stock. These finishes tend to be more durable and wear resistant but are not as high quality as our painted finishes. We call them "utility grade" finishes since the mold lines, small imperfections and some sanding marks may be visible. We WILL NOT offer solid molded colors because it is so hard to make them look acceptable.

**12. Can I get a stock molded in the color I want it painted in so scratches won't show?**

No. Due to the process used to paint the stock and the nature of the materials used in making them, molding the stock in the color you wanted it painted



in offers no advantage, costs more to manufacture, and adds weight to the stock. If you ding or scratch the surface deep enough to penetrate the gelcoat surface, it will appear as a light gray scratch regardless of the color of the stock.

**13. Do you recommend barrel bedding or pressure points?**

No, after installing thousands of stocks we have observed that 98% of the rifles are most accurate when free floated.

**14. Do I need to bed the receiver?**

We have found that in most cases our drop-in and custom fitted stocks provide better than adequate accuracy unbedded. However, the final determination is left up to the individual shooter. Bedding services may be available from your local gunsmith.

**15. Can I order from McMillan directly?**

We encourage you to use your local dealer, or you can order direct.

**16. What stocks will my action fit into?**

Because we fill each stock solid and then inlet them with CNC milling machine, we have some flexibility. If two actions are similar dimensionally (i.e. Remington and Savage) the same stock can be used for either make. Usually, though, each of our stocks is designed and made for specific actions and is available for those actions only. The only way to know for sure is to ask one of our customer service reps.

**17. What does a stock cost?**

Our price list sometimes gets complicated because we offer so many options with each individual stock, there is no one price. For hunting and sporting stocks there is a standard price for a completely finished "Drop-in Stock" which includes a Pachmayr Decelerator Recoil pad, Uncle Mikes sling swivel studs, and the finish of your choice.

For competition and tactical stocks we start with a base price which is a basic stock inletted for your barreled action including the finish of your choice.

To that you add all of the different accessories you would like to complete your stock. Each accessory is priced separately. Add all the prices together to get your total price.

**18. How do I use your price list?**

There is no set "fixed" price on any of our stocks. Our pricing is designed to let all of our customers get just what they want (within limits) and not have to pay for anything they do not want or need. So you can be a gunsmith or rifle builder who just wants a basic inlet or fully inletted stock blank to finish and accessorize yourself or you can be a customer who wants a full finished, fully adjustable competition stock ready to bolt his rifle into.

On our website just click on "stock pricing" to see the current price list. Our price list is broken down into two basic sections where most stocks in that group are all priced the same. For the "Hunting and Sporting" type stocks look in the "hunting" section for the current price for a fully inletted blank. This price includes the color and finish of your choice. Now click or look in the "stock options or accessories list." You will see many optional items here and the price each option will add to the base price. For a hunting stock you can choose from two different recoil pads and specify the length of pull. Just add the price of the pad you choose to the base price. Now for sling or bipod attachment points you can choose standard sling studs or flush cups for flush applications. Just choose what you want and how many and add those prices to the base price and pad price to get a total price for the stock.

In the Tactical and Competition stock section, look again to see the starting base price. These stocks typically have a more solid fiberglass filler material

which requires slower inletting speeds and more inletting for stock options and accessories and are priced higher than the hunting stocks because of the increased CNC machine time. Again the base price includes the color and finish of your choice. Go to the stock options and accessories list. Not all stocks have all the options available for them so check with us if you have questions. If you want an adjustable cheekpiece, pick one of the three types available and add that price to the base price. Choose what you want on the butt – just a recoil pad or one of the adjustable butt assemblies and add that price. For sling or bipod attachments choose standard sling studs or flush cups and how many and add those prices. Decide if you want optional accessory rails and bipod studs and add the price. If you want pre-installed machined-in metal pillars around the guard screw holes just specify that and add the price. Now add everything up to get a total price of a stock equipped just the way you want it. In the accessories list you can order different sling loops, or a hand stop, or any of the other accessories that we carry. See, it's really not that complicated once you work through it the first time.

**19. How long will it take to get my stock?**

The volume of orders we get each month varies quite a bit over the year, peaking in early spring and summer and slowing down in late fall. Our lead time will depend on our back-log of orders and how many we are working on. Our customer service reps will give you an honest estimate of how long your order will take to complete. For customers who do not have the time to wait for a custom stock to be made, our retail store keeps a number of both hunting and tactical stocks in inventory. They come in several color selections, and are inletted for fairly standard factory barreled



action specifications. They are finished stocks with appropriate pads and studs, and the tactical stocks come with a selection of butt and cheekpiece options. They are all sold as configured and will not be reworked to save you time. If you need something custom, then order a custom made-to-order stock of your very own. In this retail store section there are also a number of stocks from canceled orders, returns, duplicates, etc. available for immediate shipment, some are sold at discounted prices.

#### 20. Why does it take so long to get a stock?

We offer each customer the ability to custom order your stock, including choice of finishes, recoil pads, adjustable cheekpieces, adjustable butt plates, and custom barrel channels. Each stock is ordered, produced, inletted, finished and delivered according to a specific order from an individual customer. It takes time to produce a custom product to the standards our customers and we have established.

#### 21. Can I change my order once I've placed it?

As a general rule we will allow you to change your order if the stock has not yet passed the part of the process which would prevent it. For example, since the molded finishes are the first thing that goes into the mold, once the shell is made it is not possible to change colors. If we have already inletted the stock it would be too late to change the barrel contour.

#### 22. Do you need my barreled action?

For most of the stocks we make we have in-house barreled actions to use for fitting. If we do not have one we will ask the customer to send in his barreled action so that we can ensure proper fit and function. Because feeding is so critical with clip-fed rifles, we highly recommend that you send in these rifles. We will fit the stock to your rifle at no additional charge.

#### 23. Can I change the stock by removing material from the shell or shortening the forend?

Every stock is engineered and constructed for maximum strength with minimum weight. Altering the external dimensions with the exception of shortening the buttstock will compromise the integrity of the stock and thus void the warranty.

#### 24. What is a barrel contour?

This is the information necessary for us to provide a stock that is inletted for the barrel and action you wish to stock. All of our stocks allow the barrel to float free of any contact with the stock. Usually the clearance is between .030" for light hunting contours and up to .050" or more for heavy tactical contours.

#### 25. What information do you need for the barrel contour?

If it is the barrel that came on the rifle from the factory, we need to know the caliber of the rifle. If it is a custom barrel we need to know the barrel maker, the contour number and the length of the chamber cylinder. This is measured from the front end of the receiver to the first contour change after the barrel is installed.

#### 26. How much do the stocks weigh?

Generally, our hunting and sporting stocks all weigh 2 to 2.25 pounds. We do have the ability to achieve a specific target weight if additional weight is required. Our tactical and high power competition stocks are designed to be heavier. Since there are several factors that influence the final weight, such as the accessories you choose, each stock will vary in weight. In general, tactical and high power competition stocks weigh between 2.75 and 4.5 pounds.

#### 27. Can you make stocks lighter?

All of the stocks we make are as light as we feel

comfortable making them in order to live up to the McMillan reputation. If you require an ultralight, we recommend our EDGE ultralight hunting and benchrest stocks.

#### 28. Can you make stocks heavier?

Yes. We can attain your desired weight plus or minus a few ounces up to a certain limit.

#### 29. What is the difference between a Decelerator pad and the Limbsaver pad?

These are both high quality 1" recoil pads. The Decelerator is a .6" or 1" medium density rubber pad made by Pachmyer. It has no open side vents, a leather finish, and is made of a rubber material specifically designed to reduce felt recoil. The Limbsaver is a 1" softer density rubber material made by Sims Vibration Labs. It has internal sealed air chambers designed to compress more and further reduce felt recoil. Because of the softer rubber it is more difficult to grind to a fine finish than some other pads and the hole spacing will not allow it to be used on our adjustable butt systems. We feel that these are two of the best recoil pads available and are fine options for our stocks.

#### 30. What length of pull should I specify?

The beauty of a custom stock is that it can be made exactly to your personal requirements. Most factory rifles come with a length of pull in the 13.5"-13.75" range. You may want more or less, depending on your physique. Adjustable buttplates are available, too, for the utmost in ergonomics. Contact one of our customer service representatives for advice on your perfect fit.

#### 31. What is the difference between an inletted blank, a drop-in, and a complete installation?

An "inletted blank" is a stock that is fully CNC precision inletted for your barreled action



specifications and is available in your choice of any of our molded-in finish options. Basically it is an inletted stock blank ready for you or your gunsmith to add a recoil pad, studs, fancy paint of your choice, etc. A "C-D-I" or Custom-Drop-In is a fully finished stock with pad and studs, comes in any of our available finishes and has been checked for fit with one of our in-house barreled actions. If you order a stock for a barreled action that we do not have in inventory, we will ask you to send in the barreled action for fitting or make the stock as an "inletted blank with pad and studs."

#### 32. How do I pay?

No prepayment is necessary. Payment is due when your stock is finished and ready to ship. We accept personal checks, cashiers checks, money orders, and credit cards. We hold personal checks for three weeks prior to shipping. If you pay by credit card at the time of ordering, your card will not be processed until your stock is shipped.

#### 33. How can I get more answers to my questions?

Our website has more information on our stocks. Also, our customer service representatives are highly experienced in the needs of the discriminating shooting enthusiast. Feel free to call for advice on your next project, M-F 7AM to 3:30 PM MST. The number is (623) 582-9635.





SHOOT TO WIN.®

McMillan Fiberglass Stocks, Inc.,  
1638 W. Knudsen Dr. Suite 101  
Phoenix, Arizona 85027  
Toll Free: 1.877.365.6148  
Phone: 623.582.9635  
Fax: 623.581.3825  
E-mail: [info@mcmillanusa.com](mailto:info@mcmillanusa.com)

[www.mcmillanusa.com](http://www.mcmillanusa.com)

TO LEARN HOW MUCH CONFIDENCE A COMPANY  
HAS IN ITS PRODUCTS, READ ITS WARRANTY.

### 100% GUARANTEED SATISFACTION

Every McMillan Fiberglass Stock carries an "Unconditional Lifetime Warranty" against cracking, warping, splitting, breaking or becoming unserviceable for any reason. If a problem occurs, the stock will be repaired, replaced or the purchase price will be refunded at our option. This applies to items we actually manufacture and not to options or accessories we purchase from other manufacturers.

OR

If for any reason you are not 100% satisfied with your McMillan fiberglass stock, return it within 30 days in good condition for a full refund of the stock's purchase price or exchange. Shipping and handling charges are non-refundable.

Visit our website at: [www.mcmillanusa.com](http://www.mcmillanusa.com)

