



Superior Grading

Company Profile

2024-25

Superior Grading Corporate Profile

Discover the Difference that Superior Grading
Contracting will Make to your Operation.

+1-705-288-6160

www.superiorgrading.ca



Superior Grading
929 Government Road
South, Timmins, Ontario,
Canada



+1-705-288-6160



info@superiorgrading.ca
www.superiorgrading.ca

Table of Contents

About Our Company	04
Our Objectives	04
Vision Statement	05
Mission Statement	05
Core Values	05
Founder's Statement	06
Company History	08
Executive Team	09
Services and Solutions	10
Why Work with Superior Grading?	12
Project Showcase	13
2023 Business Development	15
2023 and Beyond – Future Statement	16
Client Testimonials	17
Summary	18
Contact Us	19



It's not about
ideas, **it's**
about making
ideas happen.

Introduction

Superior Grading offers mining, civil, industrial, forestry, and commercial services to companies located in North-Eastern Ontario. Founded in 1983 by the Chouinard family, Superior Grading has focused on delivering top-notch grading and clearing solutions to a diverse client base.



About Our Company

With over 37 years of unwavering commitment to excellence, Superior Grading has earned its trust as a reputable authority in road construction, maintenance, earthworks and diverse construction projects, serving Northern Ontario's mining, civil, forestry, commercial and industrial sectors with unparalleled expertise and reliability.



Being a family run business, we take pride in our dedication to being present and actively involved with the project to ensure all stakeholders are completely satisfied.

With a team of versatile and experienced professionals, Superior Grading is equipped to handle projects ranging from simple to complex. We maintain our reputation as the “go-to” general contractor in Northeastern Ontario, consistently delivering projects on-time and to the client’s satisfaction. Our track record speaks for itself.

Our Objectives



Enhance Operational Efficiency: Superior Grading is dedicated to improving project execution through streamlined processes and cutting-edge technology. This ensures cost-effective and timely completion of road construction and maintenance projects, thereby prioritizing quality and client satisfaction.

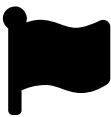


Enhance Infrastructure for Companies and Municipalities: Collaborate with companies and municipalities to upgrade infrastructure, providing specialized solutions to enhance road networks, earthworks, and construction projects for increased efficiency and sustainability.



Expand Service Offerings and Geographic Reach: Diversify services and extend operations into new industries or regions to meet evolving market demands and broaden Superior Grading's market presence.

Vision Statement



Leading with pioneering solutions in grading, land development, road maintenance, construction projects, and ground works. Our commitment to excellence sets industry standards, fostering growth and integrity within the communities we serve.

Mission Statement

To provide exceptional grading, land development, road maintenance, and mining construction services with unwavering commitment to quality, innovation, and sustainability. We aim to exceed expectations, contribute to community development, and consistently deliver superior solutions while upholding the highest standards of integrity and excellence.

Core Values



Collaboration

Superior Grading fosters collaborative partnerships with local companies, the TTN First Nation, and stakeholders. We prioritize inclusive engagement, mutual respect, and shared goals to achieve sustainable and impactful outcomes.



Integrity

Integrity forms the cornerstone of our operations, driving us to uphold unwavering honesty, transparency, and ethical conduct in all aspects of our business endeavours.



Health and Safety

Health and safety stand as paramount priorities at Superior Grading. We are unwaveringly committed to fostering a culture that prioritizes the well-being, protection, and training of our employees, ensuring a secure and healthy working environment.

Founder's Statement

In 1983, Yvan Chouinard founded Superior Grading to offer premier grading and clearing services to the construction, mining, and forest industries, later expanding their operations.



Yvan Chouinard

Founder/Owner



At Superior Grading, we embarked on our journey with a clear mission: to excel in providing top-notch, sustainable services to construction, mining, and forestry, while respecting the land we grew on. In 2014, we reached a pivotal milestone by acquiring G.R. Roy Construction, a move that significantly expanded our capabilities in the industrial construction division. This acquisition wasn't just about business growth; it reflected our deep commitment to advancing responsibly and integrating sustainable practices into our core operations.

Today, with our experienced and diligent team, we stand by our pledge to deliver exceptional services, while championing eco-friendly practices. Our focus remains on innovation, sustainability, and maintaining the highest standards. Together, let's continue building a future where progress and environmental care go hand in hand.

Sincerely,

Yvan
Superior Grading

”

We are steadfast in our commitment to sustainable and steady development, valuing and respecting diverse cultures, protecting the land, and prioritizing the health and safety of our workforce and communities.

A Reliable, Strategic and Accountable Mining Contractor



Company History

Established in 1983, Yvan Chouinard started Superior Grading, embarking on a journey focused on premier grading and clearing services tailored for construction, mining and forestry. Strategic investments were made in 1999, increasing Superior's fleet with excavators, bulldozers, dump trucks and loads to augment our capabilities for efficient project delivery.

Additionally, the inception of G. R. Roy in 1978 laid the groundwork for a legacy in construction. Under new management in 1999, the company ventured into mining and commercial building construction, expanding its scope, while maintaining an unwavering commitment to quality workmanship over 35+ years.

G. R. Roy was strategically acquired by Superior Grading in 2014. The acquisition aimed to perpetuate the tradition of maintaining superior quality, efficiency, and utmost customer satisfaction, mirroring the esteemed reputation of G.R. Roy as a trusted and respected contracting entity.

Striving Towards Excellence

2023

Formed a joint venture with Crawford Mechanical and Taykwa Tagamou Nation. This alliance represents a momentous collaboration, merging expertise and values to drive impactful ventures and foster mutual growth.

2020

With the onset of COVID-19, Superior Grading's leadership team upheld their commitment by not laying off any employees. The company ensured that all employees continued to work, safeguarding their stability.

2014

Superior Grading acquires G. R. Roy construction, expanding their services into the construction industry.

1999

G. R. Roy expands into mining and industrial construction.

1983

Yvan Chouinard founded Superior Grading with a clear vision: to offer top-notch earthworks and road maintenance services.

1978

Guy Roy starts G. R. Roy construction to supply labour for OSB plants and forestry mills.

Journey Begins

Our Executive Team

Meet the Team that Upholds Superior Grading's Reputation for Excellence.



Yvan Chouinard

Founder/Co-Owner

yvan@superiorgrading.ca



Alain Chouinard

Operations Manager/Co-Owner

alain@superiorgrading.ca



Joe Gaudet

Senior Estimator

joe@superiorgrading.ca



Dave Jodouin

Health and Safety Manager

dave@superiorgrading.ca



Chantal Perrier

Accounts Receivable/Payable

chantal@superiorgrading.ca



We offer a broad range of
Specialized Services
designed to meet diverse
project needs.

Services & Solutions





Site Construction and Management

- Site Preparation
- Infrastructure Development
- Earthworks
- Foundations
- Concrete
- Environmental Compliance
- Equipment and Fleet Services
- Safety and Training
- Project Management



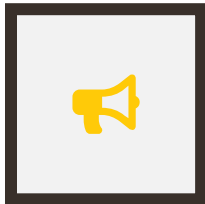
Mining and Construction

- Underground Mining Construction
- Surface Mining Construction
- Construction Management
- Material Hauling
- Mine Reclamation
- Environmental Compliance
- Safety Training
- Project Management



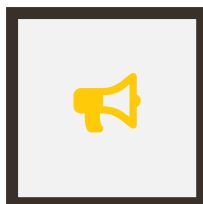
Road Building and Maintenance

- Site Clearing & Prep
- Infrastructure Design & Building
- Environmental Assessment
- Culvert & Water Management
- Ditch Digging
- Highway Fine Grade
- Road Building & Maintenance
- Grading
- Snow Management



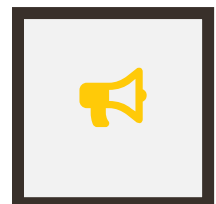
Heavy Equipment Fleet Management

- Supply and Maintain Equipment
- Certified and Competent Operators
- Fleet Monitoring
- Health and Safety Management
- Fleet Optimization and Utilization



Industrial Trades

- HVAC Technicians
- Redseal Millwright
- Carpenters
- Welders
- Gas Fitters
- Mechanics
- Plumbers
- Electrician



Specialized Services

- Non-Destructive Testing (NDT)
- Surveying
- Tailings Works and Management
- Quality Assurance and Control
- Scaffolding

Why Work with Superior Grading?

Choosing to collaborate with Superior Grading guarantees expert **solutions**, **reliability**, and a **commitment to excellence**, ensuring optimal project success and client satisfaction.



Rich Company History

With a rich company history spanning over three decades, Superior Grading has continually exemplified excellence, innovation, and unwavering commitment in providing top-tier services to diverse industries.



Enhanced Project Management

Efficient management and robust support ensure smooth project execution and comprehensive assistance.



Highest Standards

Adhering to the highest standards is our guiding principle, driving every facet of our operations to consistently deliver excellence, reliability, and superior quality across every project and service we undertake.



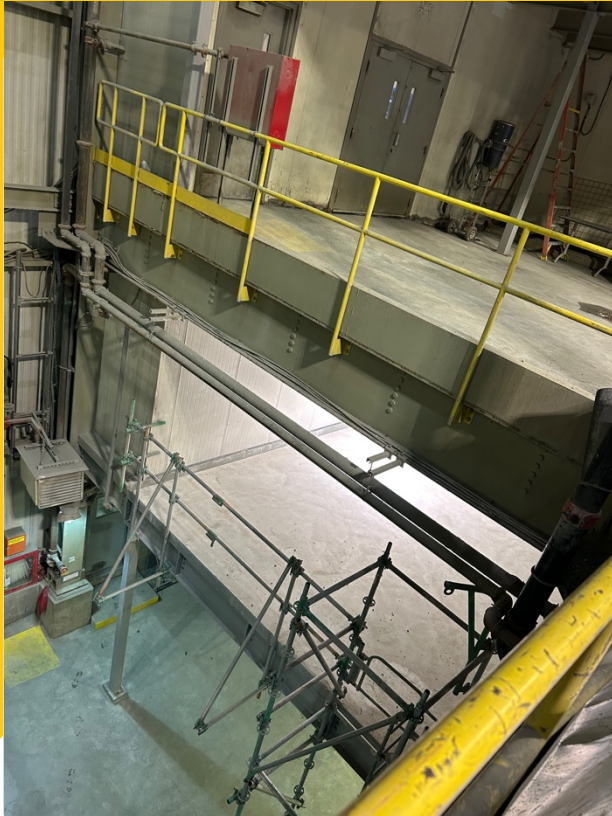
Versatile Yet Specialized

Our approach combines a wide spectrum of versatile services with finely honed specialized abilities, allowing us to offer adaptable and customized solutions that address unique project requirements while leveraging our expert precision and comprehensive skill set.



We Will Not Rest Until All Project Stakeholders are Satisfied.

Project Showcase 2023



Process Plant Office Addition

Client: Detour Lake Gold Mine

Completion Date: November 2023

The Detour Lake Gold Mine Process Plant Office Addition was a major project led by Superior Grading. It involved building a modern office space within the mine area. Superior was responsible for the structural steel building, rerouting of services, and installing high-quality Q decking. The project showcased expertise, minimized disruptions, and improved the mine's infrastructure.

Fitness Center Addition

Client: Mattagami First Nation

Completion Date: December 2023

The Fitness Center Addition for Mattagami First Nation expanded the arena by constructing a new fitness facility. The project included building the foundation and overseeing the entire construction process from start to finish. Employing a diverse team of trades, such as HVAC, electrical, and plumbing experts, ensured a seamless integration of services. This addition not only expanded the community's amenities but also demonstrated efficient coordination among trades to create a modern fitness space within the existing arena structure.





Workshop/Warehouse Building

Client: CJ Equipment

Completion Date: February 2023

The complete building project for CJ Equipment encompassed every phase of construction, starting with excavation and foundation work, followed by the meticulous building of the entire structure. The project further included the installation of essential services and utilities, along with the intricate finishing touches. Through careful coordination and execution, every aspect of this project, from the groundwork to the final touches, was managed seamlessly.

Primary Crusher Staircase

Client: Detour Lake Gold Mine

Completion Date: August 2023

The Detour Gold Primary Crusher Staircase Project involved removing the old staircase, digging to the right level, creating a sturdy foundation, building strong steel stairs, and enclosing the staircase for safety. It was a detailed process that improved safety and access to the primary crusher area, showcasing careful planning and construction expertise.



See our full portfolio on our website
www.superiorgrading.ca

2023 Business Development

Overview

The year 2023 proved remarkable for Superior Grading as it marked the establishment of a transformative joint venture with Crawford Mechanical and the TTN First Nation. Operating across diverse sectors including forestry, industrial, commercial, civil, and mining, this collaboration signifies an exciting expansion and commitment to excellence across multiple industries.

Projects Completed

Superior Grading completed more than **30 large infrastructure projects** in 2023.

Total Revenue

15% Increase in Revenue
Compared to 2022



New Employees
25

This growth stands as a testament to our company's dedication, success, and increasing demand for our services.



2024 and Beyond - Looking Forward

Despite the successes of 2023, our sights are set higher for 2024 as we aim to surpass our achievements and set new benchmarks.



01

Sustainability and Community Engagement

Our future journey starts with a focus on sustainability and meaningful community engagement as our initial step towards a thriving and responsible business. Our recent partnership with TTN and Crawford Mechanical establishes a mutually advantageous collaboration.

02

Market Expansion and Proficiency

As we advance, our plan involves entering new markets, refining our skills through recent hires and expanding trades, aiming to enhance our impact and proficiency.

03

Technology Integration and Innovation

Looking ahead, our focus shifts to integrating cutting-edge technology and fostering innovation. This marks the next step in our business evolution, as we strive to leverage technological advancements to enhance efficiency and drive innovation across our operations.



We aspire to build a legacy, committed to standing the test of time.

We are proud to serve our clients with excellence.

Superior Grading's work on our fitness center addition was outstanding, demonstrating their expertise and dedication. They made the construction process smooth and impressive with their attention to detail.

Devin Naveau
Chief Financial Officer
Mattagami Aki LP

Yvon and his team created our stunning home with great attention to detail and exceptional craftsmanship, surpassing our expectations at every step of the construction process.

Marco Julien
Owner
Steelworks

Our new workshop provided Crawford Mechanical with a modern facility, enhancing their work environment and enabling efficient operations. Thank you to Yvan, Alain and their team!

Garret Crawford
Co-Owner
Crawford Mechanical

Superior's remarkable speed in constructing our large shop exceeded our expectations. We're extremely pleased with their exceptional workmanship and effective project management skills.

Claude Bruno
Owner
CJ Equipment

We are ready to earn your business.

Thank you.

At Superior Grading, we stand poised to earn your business with a comprehensive array of industrial services tailored to meet your needs. Our expertise spans across construction, project management, road building, heavy equipment services, and an array of specialized trades. With a steadfast commitment to excellence, we assure precision and quality in every aspect of our work, aiming to exceed expectations and deliver solutions that propel your projects towards success. Whether it's managing intricate projects or providing specialized trade services, Superior Grading is dedicated to being your trusted partner in achieving unparalleled results.

Alain Chouinard

Operations Manager/Co-Owner



it's not about
ideas, **it's about
making ideas
happen**



+1-705-288-6160



info@superiorgrading.ca
www.superiorgrading.ca



929 Government Road South, Timmins,
Ontario, Canada P4R 1N4