



SOLID WASTE COLLECTION UTILIZING 96-GALLON TRASH CARTS

- **Carts must be located at the curb on by every Wednesday by 7:00am.**
- **Heavy Trash Pickup is on First and Third Wednesday of every month.**
- All carts will remain the property of WCA and will be maintained, at no charge by WCA. Customer is encouraged to confine their solid waste, grass clippings, leaves and other similar yard waste to the cart.
- Any refuse not contained within the cart will be serviced as long as it's contained in additional containers or bags not exceeding 40-gallons or 40-pounds. (Household garbage is defined as waste generated inside the house, exclusive of any construction or remodeling debris.)
- Trees, shrubs, brush trimmings and fencing must be tied and bundled in lengths no greater than 4-feet with no branch diameter exceeding 3-inches.
- Heavy/Bulky waste/items must be located at the curb area of each residence. Items such as appliances, furniture, carpet (up to 1 room, rolled up 4-feet wide and less than 50-pounds), cardboard boxes (flattened).
- By Federal Law, refrigerators and freezers or any other items containing Freon must be drained of Freon and have an accompanying bill to validate such service was performed.
- Items excluded from normal collection are wet paint, dirt, rocks, bricks, concrete, tires, batteries, motor oil, cooking oil, liquids, flammable liquids, and waste generated by a private contractor or any materials or items deemed hazardous materials.
- **HOLIDAYS:** If the scheduled collection day falls on any of the following holidays, the normal service will be resumed the following scheduled pick up day. WCA observes the following holidays:
 1. New Year's Day
 2. Memorial Day
 3. Independence Day
 4. Labor Day
 5. Thanksgiving Day
 6. Christmas Day

Thank you for your business!



RECYCLE SERVICE

Please have your recyclables at the curb no later than 7 a.m every Wednesday. Heavy trash

Accepted Recyclable Material



Newspapers
(Periodicos)



Magazines
(Revistas)



Junk Mail
(Correo no deseado)



Colored Paper
(Papel de color)



Paper Bags
(Bolsas de papel)



Folders
(Folletos)



Phone Books
(Directorios)



Greeting Cards
(Tarjeta de saludos)



Cardboard
(Carton)



Paperboard
(Carton)



Plastics #1-#7
(Botellas de plastico #1-#7)



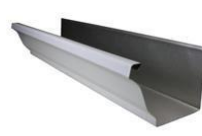
Pots and Pans
(ollas)



Aluminum Cans & Foil
(Latas de aluminio y



Steel and Tin Cans
(Latas de hojalata



Gutters, Copper, & Scrap
(Arroyos, cobre, y papel aluminio) y fierro fragmento)

Commonly Mistaken Unacceptable Items

Plastic bags, Styrofoam, Soiled Pizza Boxes, Coat Hangers, Paint & Solvent Containers, Light Bulbs, Mirrors, Windows, Dishes & Cups, Wet/Soiled Paper, Glass, Facial & Toilet Tissue, Disposable Plates & Cups, Milk & Juice Cartons (wax-board containers), Wrapping Paper

If you have any questions, comments, or complaints regarding your garbage or recycling services, feel free to contact us at (281) 368-8397, or visit our website at www.wcawaste.com/Houston.