

BayView

Optimum View Series Windows & Doors



by



Monte Verde
Windows & Doors

BayView

Optimum View Series Windows & Doors



Minimized frame height increases viewable glass area.



We are proud to introduce Bay View Series with maximized glass viewing area, enhanced energy efficiency and an optional Pro-Latch Lock system. Whether your home overlooks a shimmering coastline or a lawn alive with playing children, you'll appreciate being able to see more of it through beautiful Bay View windows and doors. As with all Monte Verde products, Bay View includes premium beauty, craftsmanship and features at a value price.

Multi-chambered frame
for better insulation



ENERGY EFFICIENCY

With solar control triple Low-E glass and a silicone spacer, Bay View windows maximize energy efficiency. Your home will be cooler in the summer and warmer in the winter with lower energy costs.

Dual durometer glaze
bead for watertight seal

White or tan vinyl

Dual-wall glazing leg
reduces condensation

Narrow metal reinforced stay bar
for added view and security

Continuous interlocking meeting
rail for weather-tight performance

Beveled exterior profile
for added curb appeal

Integral double wall flush fin
1 3/4" for easy retro fit window
replacement application

1 1/2" narrow frame height
for maximum viewing area

Fusion-welded corners for watertight
seal, strength and energy efficiency

SECURE LOCK SYSTEMS

Our standard pull-tight cam lock is fastened to a metal reinforcement bar. Or upgrade to our optional Pro-Latch Lock that locks automatically when sash is shut completely. Both lock styles pass stringent California Forced Entry (CFE) resistance test.



Fully pocketed sash with
triple fin weather strip

3/4" overall insulating unit with
double strength glass standard

IDEAL FRAME DEPTH

Bay View's 2 7/8" frame depth is optimum for most California homes and allows for attractive flush mounted blinds.





Window STYLES

All are available with optional tempered glass.



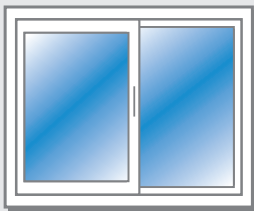
Single Hung



Picture



Casement



Single Slider



Geometrics

V-GROOVE BEVELED GLASS
(Optional) Various styles and patterns available



FRAME OPTIONS



Double Wall Beveled Flush Fin



Brick Mould Multi-Tiered Casing

FRAME COLORS



White



Tan

GRID STYLES



5/8" Flat



5/8" Scultured



1" Euro

GRID PATTERNS



Colonial



Perimeter



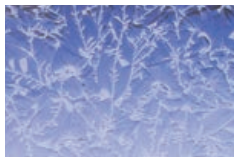
Queen Anne

OBSCURE GLASS OPTIONS

Standard Obscure



Glue Chip



Flemish



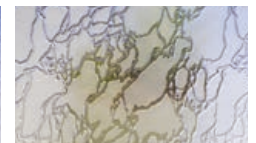
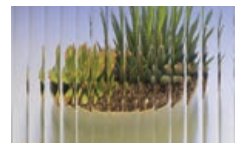
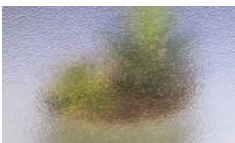
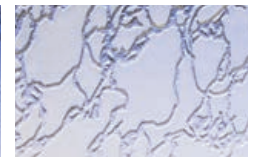
Reed



Rain



Delta Frost

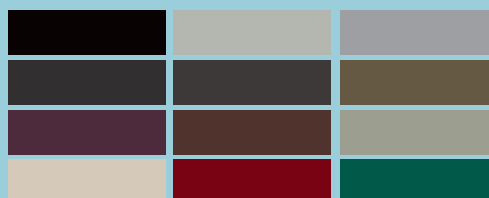


OPTIONAL:

This solid stainless 1/4" sash bolt in metal casing provides added security for peace of mind.



EcoCool™
Solar Reflective
Exterior Finishes (Optional)



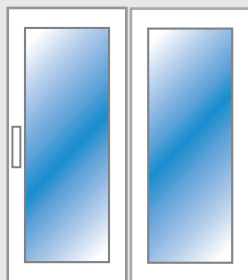
All Bay View
Products Exceed
Energy Star
Requirements



Patio Door STYLES



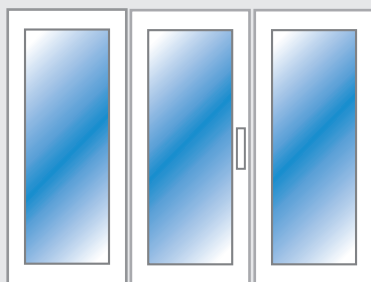
SWINGING French Doors



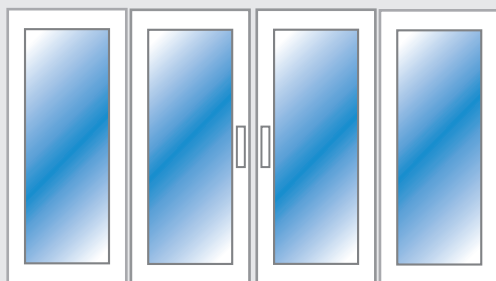
X0, OX

Available in Standard (2 1/2" wide rails) and French-style (4 1/2" rails), and in widths from 5' to 12' by 8' high.

(Illustrations depict 4 1/2" rails.)



OX0, X00, 00X



OXX0



Shown: XX In-swing with Retro Fin and White Hardware



Shown: OXX0 Out-swing with White Hardware

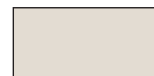
(Pictured as viewed from home exterior.)

Bay View custom vinyl swinging French Doors are available in various configurations, including options with operable sidelites.

DOOR FRAME & HANDLE COLOR OPTIONS



White



Tan

Bay View Patio Doors
are available with the same
Grid Styles, and Grid Patterns
as Bay View Windows.

All products are NFRC & AAMA certified



Bay View windows and patio doors are tested and certified by the National Fenestration Rating Council (NFRC) and the American Architectural Manufacturers Association (AAMA) two of the most respected independent certification bodies in the industry.

Limited Lifetime Warranty on parts and labor



Bay View windows and patio doors are backed by a Limited Lifetime Warranty on parts and labor. So along with beauty, performance and energy efficiency, our products also provide peace of mind. For warranty details, please contact your dealer.

Optional: Accidental Glass Breakage Coverage Available.

BayView



Standard Features



SINGLE HUNG



SINGLE SLIDER



PICTURE



CASEMENT



GEOMETRICS



PATIO DOOR

Triple Low-E glass for maximum energy efficiency – standard



Double Strength Glass



Silicone memory foam spacer with warm edge technology



Multi chambered hollows in frame for better insulation



Frame and sash fusion welded for air/water tight corners



Double wall glazing tower for added strength and condensation resistance



Exterior glazed for added security and beauty



Cam lock for security and improved protection from air and water



Locks fastened to metal reinforcement. Passed California Forced Entry Test



Optimum Viewing Area



Beveled interior frame and sash



Continuous interlocking meeting rail (no notch at locking point) for added security and performance.



Vents notched as left or right frames to restrict air and dust passage



Dedicated picture window frame



Screen tabs are anodized aluminum for long life



Screen corners are mitered for enhanced appearance



Removable track for cleaning



Tandem Celcon rollers with large stainless steel axles for smooth operation



Oversized tandem rollers with sealed bearings for smooth operation



Bay View Thermal Performance

Window/Door Style	UV Block ¹	Visible Light Transmittance ²	Total Unit U-Factor ³	No Grids SHGC ⁴	Grids SHGC
Single Hung - (triple Low-E, air fill)	94%	64%	0.31	0.23	0.21
Single Hung - (triple Low-E, argon fill)	94%	64%	0.27	0.23	0.21
Single Slider - (triple Low-E, air fill)	94%	64%	0.31	0.23	0.21
Single Slider - (triple Low-E, argon fill)	94%	64%	0.27	0.23	0.21
Picture Window - (triple Low-E, air fill)	94%	64%	0.30	0.24	0.22
Picture Window - (triple Low-E, argon fill)	94%	64%	0.25	0.24	0.22
Casement - (triple Low-E, air fill)	94%	64%	0.29	0.18	0.16
Casement - (triple Low-E, argon fill)	94%	64%	0.26	0.17	0.16
Sliding Patio Door - Standard - (triple Low-E, air fill)	94%	64%	0.32	0.22	0.19
Sliding Patio Door - Standard - (triple Low-E, argon fill)	94%	64%	0.29	0.21	0.19
Sliding Patio Door - French-style - (triple Low-E, air fill)	94%	64%	0.32	0.19	0.17
Sliding Patio Door - French-style - (triple Low-E, argon fill)	94%	64%	0.29	0.19	0.17
Out-swing French Door - (triple Low-E, air fill)	94%	64%	0.35	0.17	0.15
Out-swing French Door - (triple Low-E, argon fill)	94%	64%	0.32	0.17	0.15
In-swing French Door - (triple Low-E, air fill)	94%	64%	0.34	0.17	0.15
In-swing French Door - (triple Low-E, argon fill)	94%	64%	0.31	0.17	0.15

¹ Ultraviolet (UV) light block calculations performed using Lawrence Berkeley Laboratories Window 4.1 program. Percentages indicate amount of UV transmittance blocked from the interior using a 3/4" glazing unit.

² Visible light transmittance indicates the amount of outside light reaching the interior as calculated using center of glass. Higher percentages mean more outside light reaches interior.

³ U-factor represents the amount of heat transfer as measured in accordance with NFRC 100-2001, calculation uses total window unit, and assumes 3/4" glazing with a 1/2" airspace. Lower is better.

⁴ Solar heat gain coefficient (SHGC) measures the amount of solar radiation entering the building. As measured per NFRC 200-2001 with the Window 4.1 and Frame 4.1 modeling programs. Lower is better.



INSTALLATION STANDARDS

Monte Verde Windows & Doors recommends following installation standards in your local building codes, and the instructions found in the following AAMA publications:

Replacement: AAMA 2410-13: Standard for Installation of Windows with an Exterior Flush Fin Over an Existing Window Frame.

Replacement: CAWM 420-97: Standard for Installation of Block Frame Windows Utilizing an Existing Perimeter Wood Frame.

New Construction: AAMA 2400-10: Standard for Installation of Windows with a Mounting Flange in Stud Frame Construction.

Your authorized Monte Verde dealer: