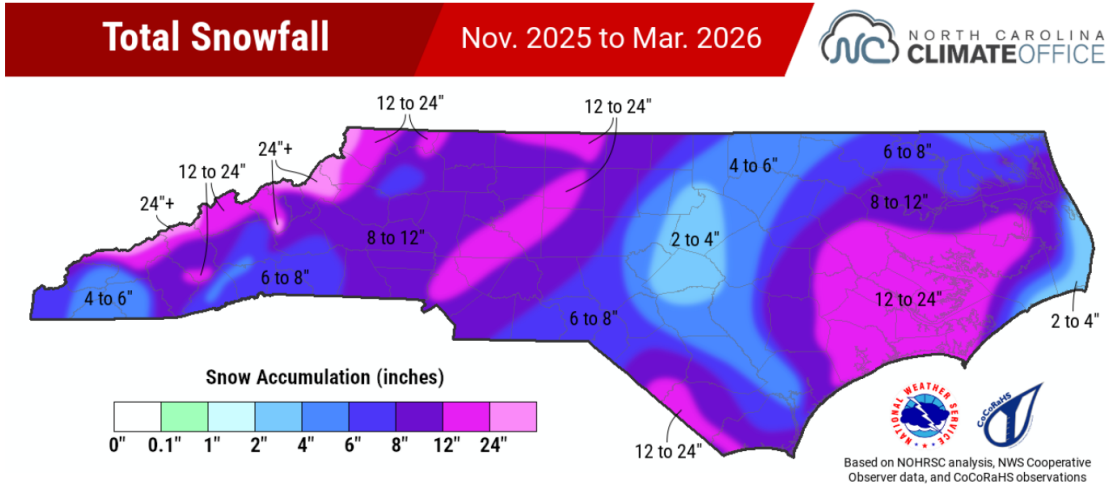


Report to Board, Town of White Lake April 2026

Diane Lauritsen, Ph.D.

First Quarter Precipitation

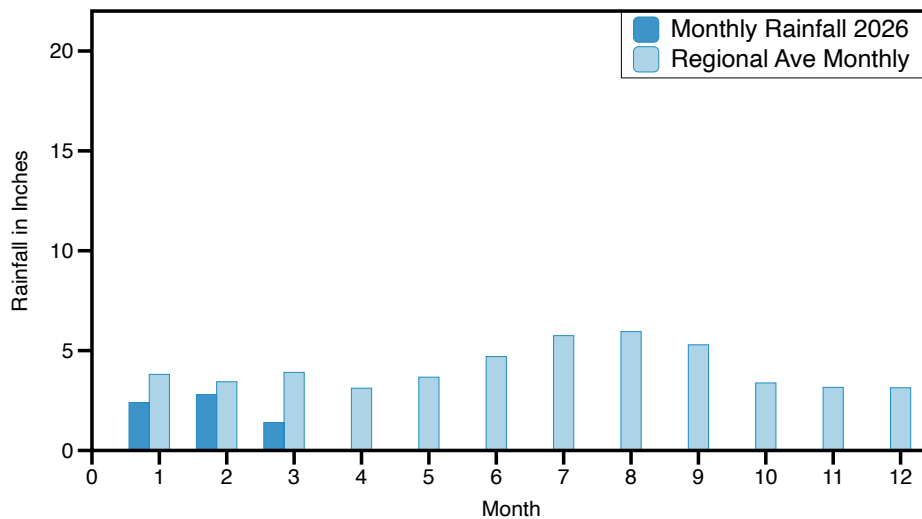
Of note this quarter was the snowfall event of January 31-February 1, which was substantial in some parts of the state:



Total snowfall across North Carolina from November 2025 through March 2026. (Based on **NOHRSC analysis**, NWS Cooperative Observer data, and CoCoRaHS observations)

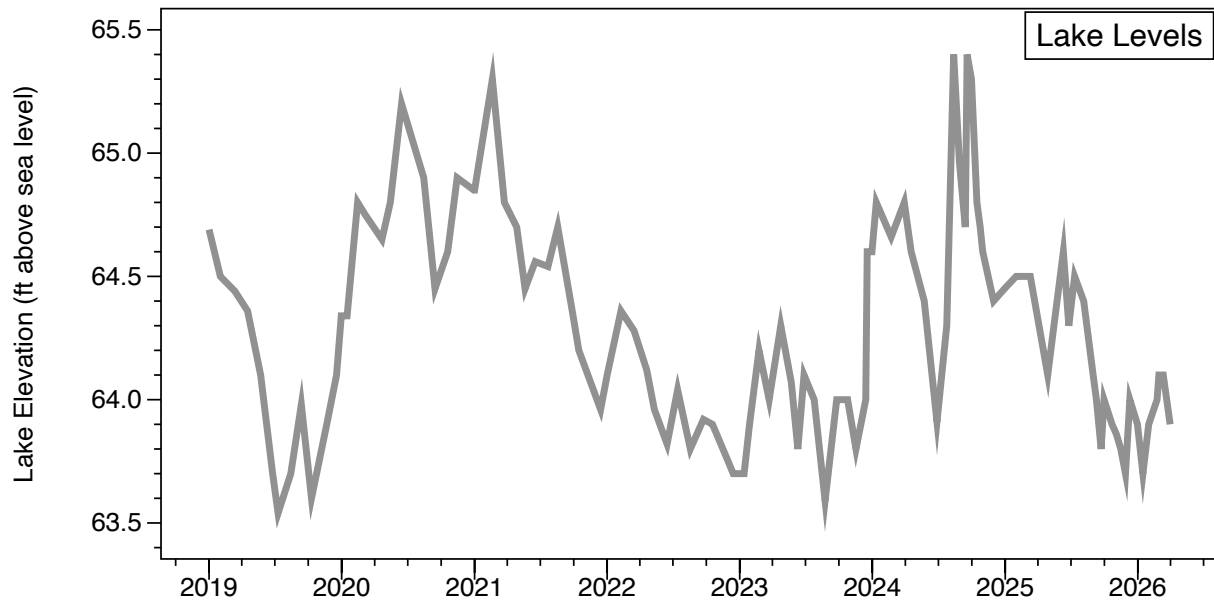
This has been the second winter of La Niña effects, resulting in a relatively dry three-month period. The NC Climate Office projects rainfall to pick up to more normal amounts in May.

White Lake Monthly Rainfall 2026



Lake Levels

The lake level at the end of March was 7.2 inches lower than what was seen at the same time in 2025. Lower lake levels are something to be aware of for Water Festival activities in May. If possible, getting the marine dealership to refrain from filling ballast bags for boats they are testing during low lake level periods would lessen the impact on the lake.

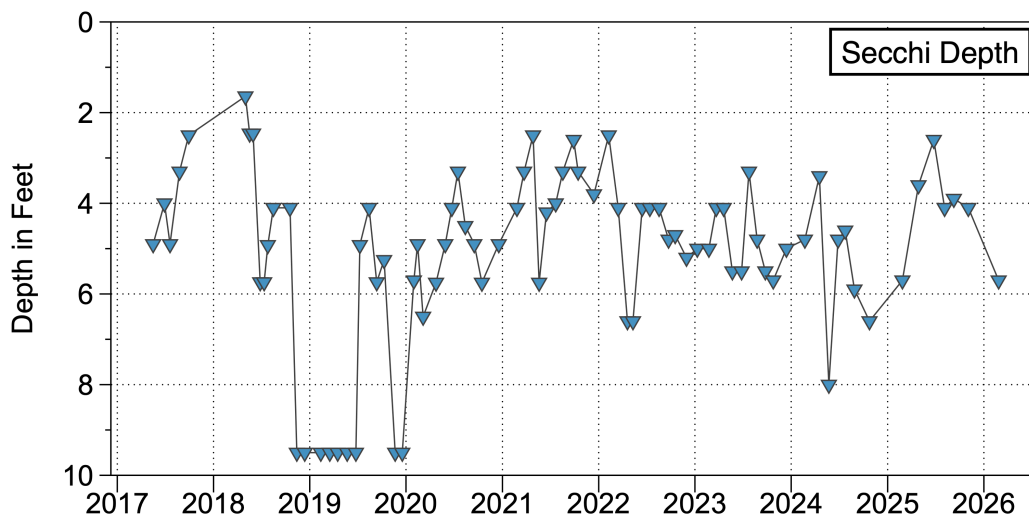
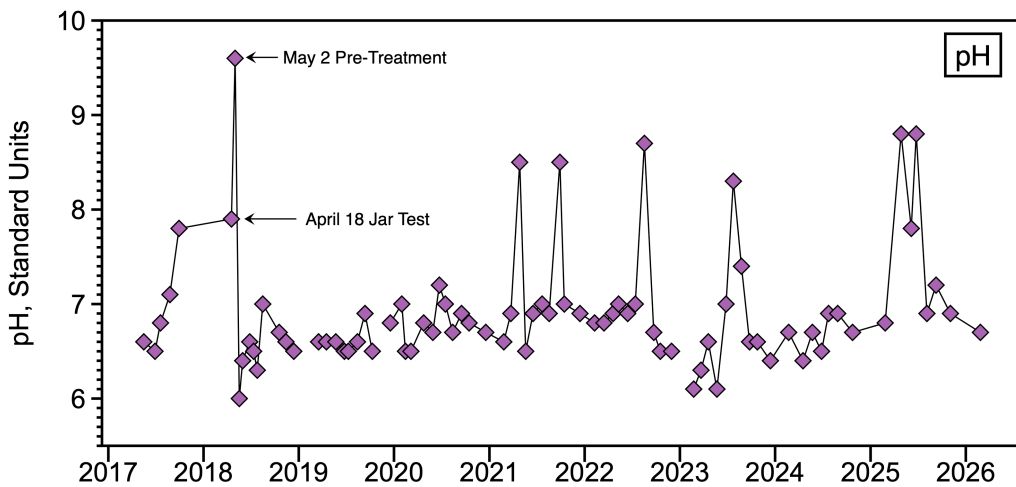
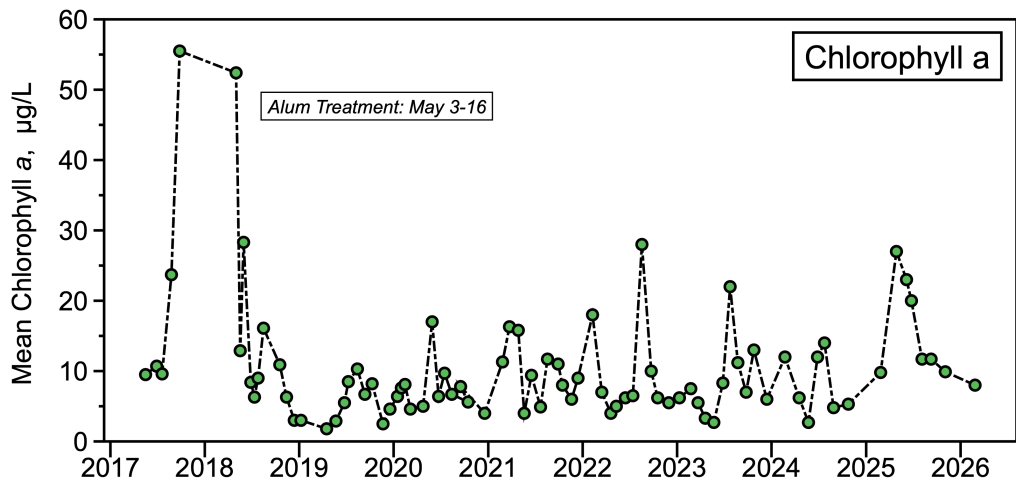


Lower lake levels provide an opportunity to clean the beaches and pick up trash. The rubbery skin of material which forms at Lake Place condos is thoroughly dried out and can be raked up/picked up relatively easily, and there is also a good bit of trash that has collected along the shoreline:



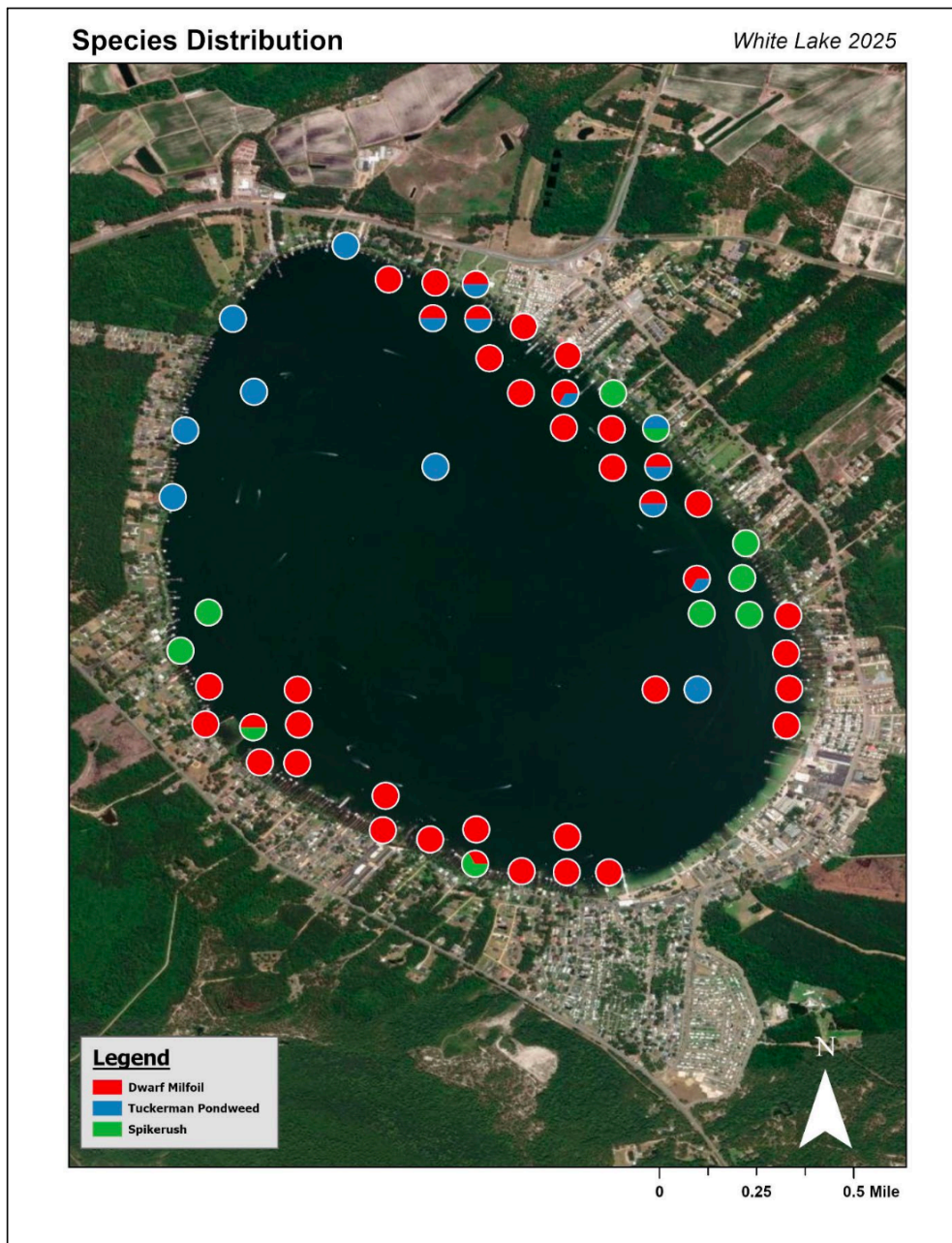
Productivity and Clarity

Chlorophyll *a* (an estimate of phytoplankton biovolume), pH, and water clarity levels at the end of February were equivalent to what was seen in February 2025:



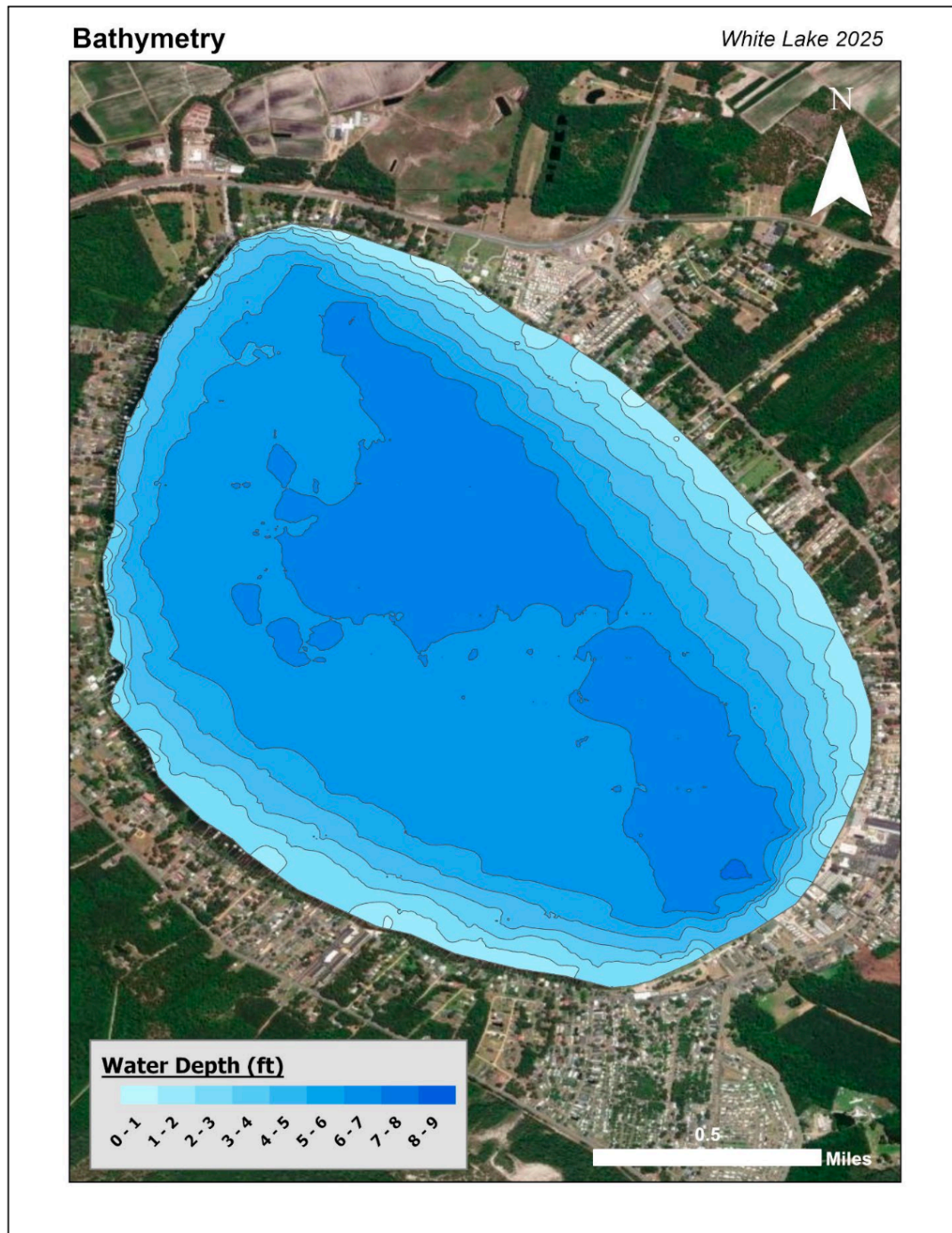
Aquatic Vegetation Survey

The report from the September 17, 2025, whole lake survey of submerged aquatic vegetation was recently completed, and NCSU staff found only low-growing native plants, and no hydrilla. Two of the things collected are rare (not found in many places in the state), which is another indicator that White Lake has value as a natural resource.



This Google Earth satellite view shows the wakes of boats on White Lake—they are distributed around the perimeter of the lake for the most part, in shallower areas where there is plenty of shallow-rooted aquatic vegetation that can become dislodged and wash ashore.

Lake Depths



This map was also produced by NCSU, and at the time of the survey, the lake level was 63.8 feet (this from the lake level monitoring that Steve Bunn does), which was one inch lower than the level on March 31 of this year. ***The average depth of the lake was 5.75 feet, and the deepest recording was 8.2 feet*** (in the relatively small “hole” offshore from Camp Clearwater).

According to multiple sources (found at the White Lake Watch web site), at least 20 feet of water is needed to produce good waves from a wave board boat. So, their use in the lake provides a less-than-ideal experience that impacts lake aesthetics.