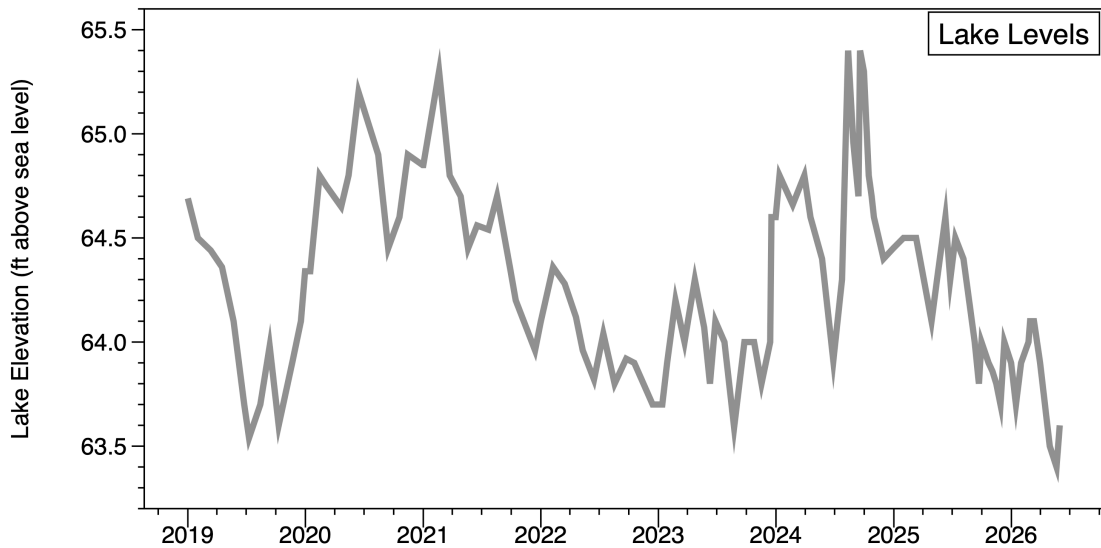


Report to White Lake Town Board
June 2026
Diane Lauritsen, Ph.D. LIMNOSCIENCES

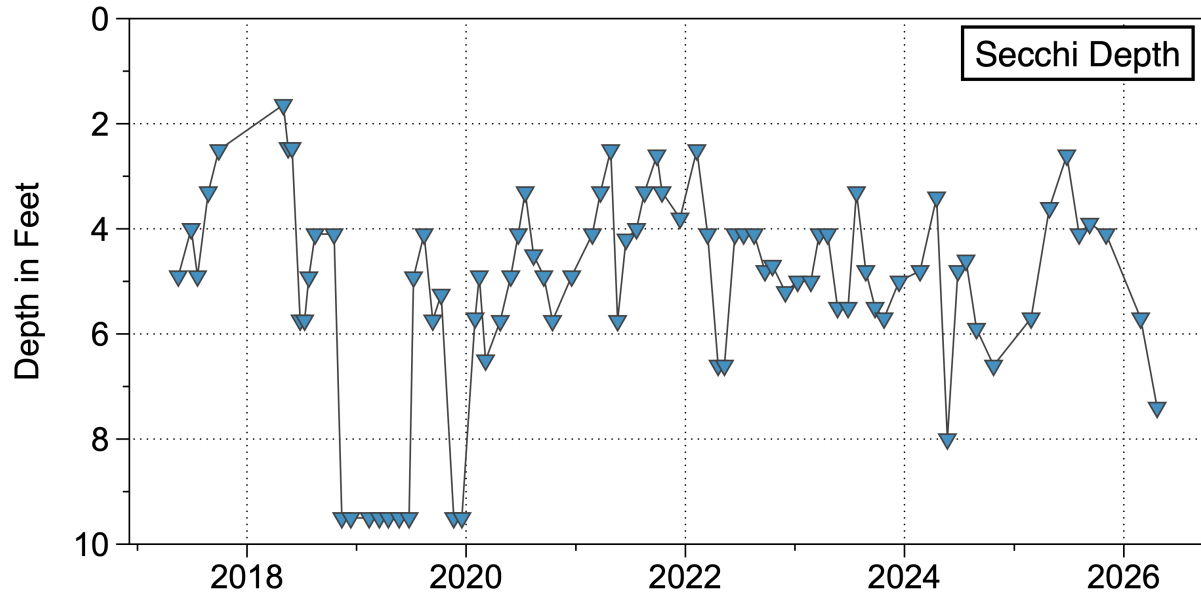
The lowest lake level since sustained monitoring started in 2019 was seen on May 21, at 63.4 feet NAVD 88 (this was 1.2 inches lower than the previous low of 63.5 ft). With a rainy week at the end of the month, the lake level was a bit higher, at 63.6 ft. Total rainfall for the month was 5.1 inches. This amount of rainfall onto the lake surface contributed 147.9 million gallons of water to the lake.



Monthly Rainfall (inches) for White Lake 2012-2026

Month	2026	2025	2024	2023	2022	2021	2020	2019	2018	2017	2016	2015	2013	2012	Monthly Average for Region
January	2.4	2.5	2.75	4.3	5.75	8.25	4.5	2.75	4.20	7.0	3.0	2.5	1.75	2.75	3.81
February	2.8*	2.6	2.5	3.6	1.0	9.2	6.7	2.25	2.00	1.5	10.7	5.5	2.5	4.0	3.44
March	1.4	2.6	5.0	2.5	2.45	2.7	3.7	3.25	3.95	3.7	1.55	4.15	1.0	7.0	3.91
April	1.1	1.4	1.75	8.5	3.75	1.75	5.1	7.25	6.75	6.75	6.75	4.55	1.75	2.25	3.12
May	5.1	7.5	2.3	1.5	2.2	3.0	12.25	1.20	7.70	2.7	4.5	4.20	2.25	9.25	3.67
June		6.15	1.5	6.3	6.2	7.9	7.15	5.25	10.00	4.5	3.65	8.70	17.0	2.0	4.70
July		7.15	9.5	3.8	10.5	7.5	6.85	6.00	4.75	6.75	3.75	3.0	11.25	8.6	5.75
August		3.8	21.6	7.5	5.5	6.5	7.55	5.35	6.25	5.6	4.12	9.4	8.25	9.75	5.95
September		2.7	15.4	3.05	6.5	3.2	5.95	5.00	29.45	5.2	15.0	4.7	1.0	5.0	5.29
October		1.9	0.0	1.75	0.6	0.6	3.35	3.60	2.25	2.95	14.25	9.75	1.75	2.25	3.38
November		0.7	1.0	3.25	1.55	0.4	7.5	4.90	4.25	1.0	0.50	7.25	0	2.25	3.16
December		3.8	2.3	8.5	1.2	3.4	4.25	6.00	7.5	5.45	5.1	6.5	5.75	4.25	3.14
Total		42.8	65.6	54.55	47.2	54.4	74.85	52.80	89.05	53.1	72.87	70.20	54.25	59.35	49.32
% of Lake Volume		56	85.9	71.4	61.8	71	97	69	116	69	95	91	70	77	64

Water clarity had improved substantially in April compared to February, with lower chlorophyll *a* levels (indicating less phytoplankton in the water). This trend is typical for White Lake—the best clarity is seen in the spring, if nutrient levels are lower (which was the case—lab analysis found no detectable dissolved inorganic nitrogen, which has been the primary fuel for phytoplankton growth in the lake).



pH levels also indicated that photosynthetic activity was relatively low.

