



Virginia Regional Commerce Park

New Class A Warehouse Build-to-Suit

126,000 SF of New High Bay Warehouse
Virginia Regional Drive, Suffolk, VA

Now Pre-Leasing

Lang Williams, SIOR
Executive Vice President
+1 757 679 9106
lang.williams@colliers.com

Ashton Williamson, MAI, SIOR
Executive Vice President
+1 757 288 3438
ashton.williamson@colliers.com

A Development By:

HOURIGAN

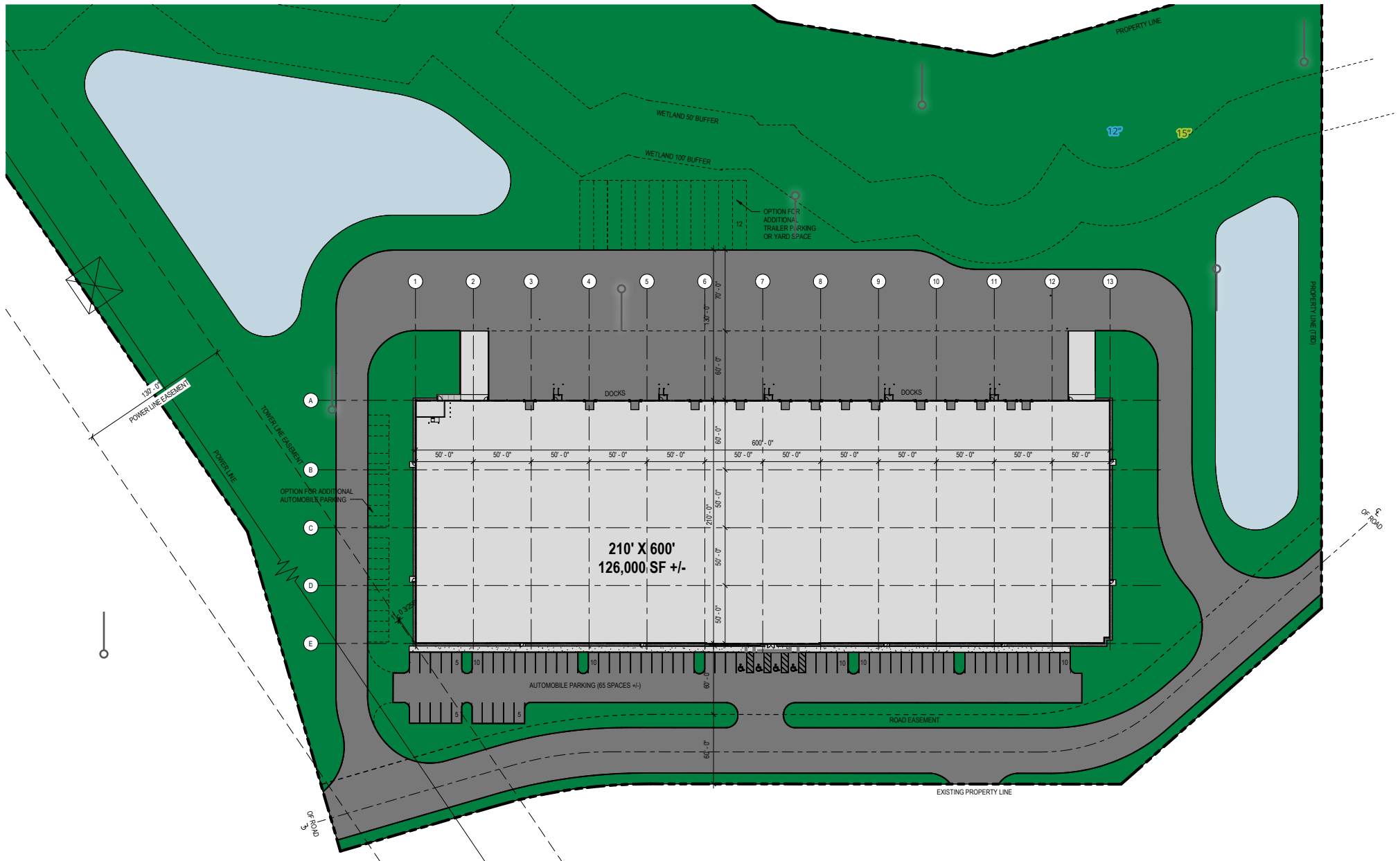


Building Elevation



Building C Specifications

Total SF	126,000 SF	Drive In Doors/ ramps	2 (12' x 14')
Building Dimensions	210' x 600'	Parking	65± spaces
Column Spacing	52' x 50' with 60' Speed Bay Depth	Trailer Storage	Up to 12 on-site trailer spaces, with additional spaces within Virginia Regional Commerce Park
Clear Height	36'	Lighting	LED warehouse lighting
Sprinkler	ESFR	Floor	7" 4,000 PSI warehouse floor
Truck Court Depth	130'	Zone	M-1 zoning allows for Logistics, Flex, Light Industrial uses
Dock Doors	Fourteen (14) 9' x 10' Dock Doors in Base Building / Knock-Out Panels for Additional 19 Doors	Power	2,000 AMP base building service

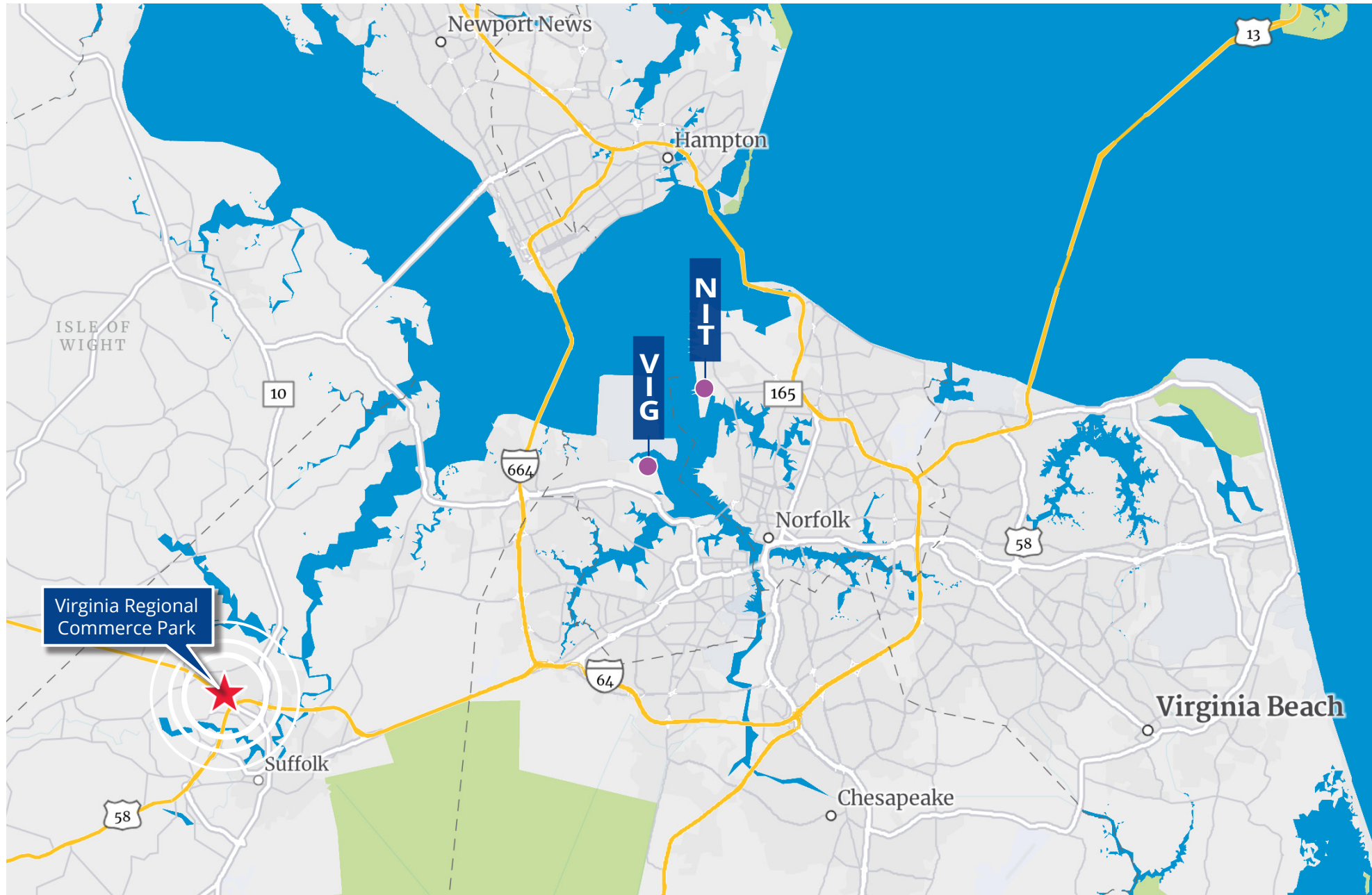


Site Aerial

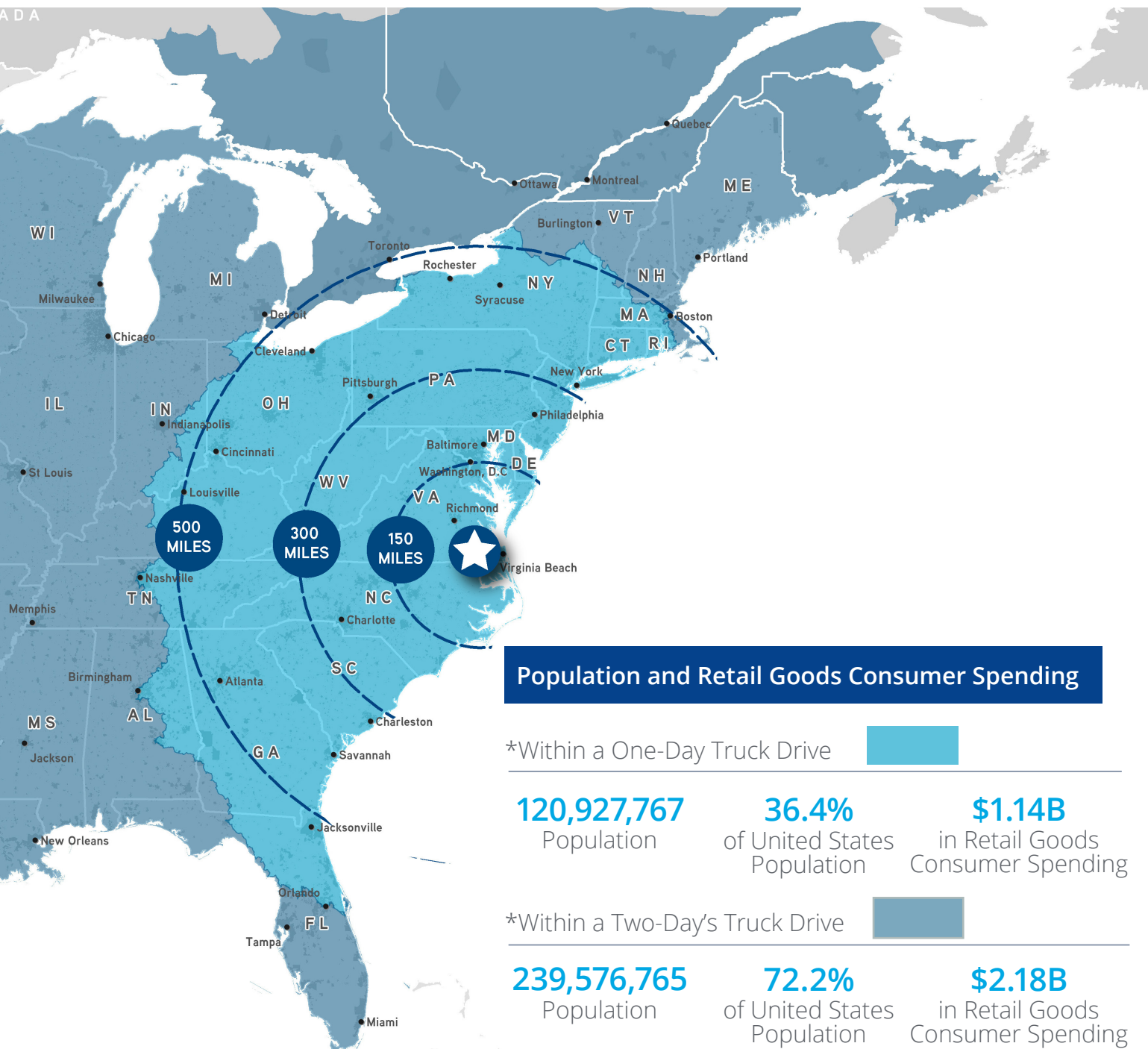


Virginia Regional Commerce Park Building C offers one of the only Class A warehouse spaces with available space up to 126,000 SF in the Norfolk Industrial market. The building is located within twenty-five minutes of the Port of Virginia (VIG) terminal. Nearby amenities include Miller's Truck Stop and Huddle House adjacent to Building C. Virginia Regional has excellent access via a traffic light at the main park entrance and is a direct shot via the Suffolk Bypass and Interstates 664 and 164 to the VIG terminal.

Regional Map



One and Two-Day Population Acces



Contact Us:

Lang Williams, SIOR
Executive Vice President
+1 757 679 9106
lang.williams@colliers.com

Ashton Williamson, MAI, SIOR
Executive Vice President
+1 757 288 3438
ashton.williamson@colliers.com

Colliers International
150 W. Main Street
Suite 1100 | Norfolk, VA
P: +1 757 490 3300