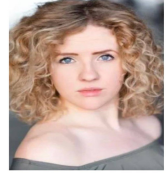
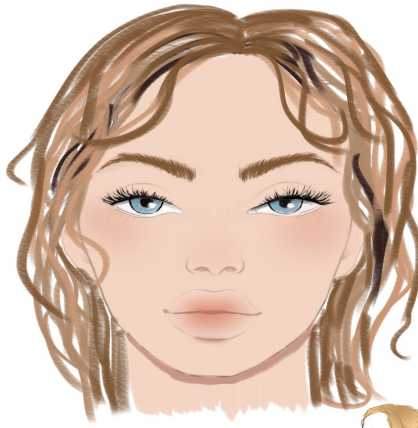


Tiger Lilly

tribal makeup?
Flowers in hair
press hair back
elf ears!!
braids??



mascara
lipstick
blush
foundation

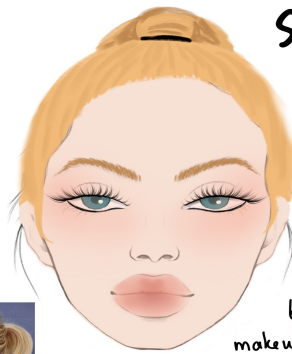


Peter Pan (female)

Freckles
Dark ginger/brown wig
Androgynous appearance



Starky



back combed
curly pony tail
black eyeliner
makeup from Mrs. Darling
can be kept



its a hat!!



Captain Hook

! old looking (also kind of cool/jungle setting)
eye bags, wrinkles
fake mustache
curly long wig
eyeliner

