

# Lockport Area Genealogical & Historical Society



2<sup>nd</sup> Year, Volume 2, No.2

FEBRUARY 2002

"Preserving the  
Past  
is our Present  
to the Future"

## Executive Board

### OFFICERS

#### President

Dr. Reno G. Caneva

#### Vice President

Gordon McCluskey

#### Secretary

Charlene Giardina

#### Treasurer

Bonita Packley

#### Librarian

Ruth Waldvogel

#### Genealogist

Jacqueline Munch

#### Historian

Georgene Bankroff

### DIRECTORS

Richard Cronholm

Erwin Klopstein

William Molony

James Raue

## Newsletter Staff

Charlene Giardina

Judith Richardson

Bonita Packley

E-mail correspondence:

cgiardina@dnrmail.state.il.us

## Membership Dues and Special Events Tickets:

Bonnie Packley, treasurer  
1016 Maitland Drive  
Lockport, IL 60441

## Message from the President

While we await the changing weather of Mid-Winter,  
it is important to keep in mind  
our past blessings and accomplishments.

We have begun to use our newly acquired headquarters  
at "The House in the Park," courtesy of the Lockport  
Township Park District.

We have set up an office with a desk, telephone, copy  
machine, and computer. Another room is for the archives  
of the Library, Genealogy and History divisions. There is  
also space for a boardroom, doubling as a workroom.

WE have the PLACE. We need the PEOPLE. Our plans  
are to have volunteers on the premises two afternoons each  
week. Presently, we will begin with one day each week,  
Friday, between 2 p.m. and 4 p.m. Once we have enough  
volunteers, we will be open to the public.

In The House in the Park, we will welcome people to  
share their family stories, documents, and memories of the  
historical events of the Lockport Area. We will make  
accessible these invaluable materials to visitors in search  
of their family heritage.

We will produce the 175<sup>th</sup> Anniversary Book: 1830-2005

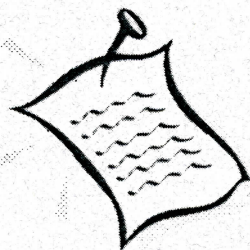
—Dr. Reno G. Caneva, DPM

To offer your help, please call Char Giardina at 815.353.5662.

All other correspondence: LAGHS / "The House in the Park," 1911 S. Lawrence. Lockport, IL 60441



# Notes on how to do a family "tree"



by Nancy Bruce Crilly,  
contributing writer

Charts can be very useful in putting together your family tree. They organize your material and show at a glance where any data is missing.

There are two basic charts commonly used by researchers: the Pedigree Chart and the Family Group Sheet. The Pedigree Chart begins with YOU and continues back through your parents, grandparents, and great-grandparents. With each name on the chart are spaces for vital information such as birth, marriage and death dates and places.

The Family Group Sheet begins with each set of two parents and their vital information and lists all the children of this marriage. In the listing of the children, all of their dates and spouses are also recorded.

There are four principal sources for the data needed for these charts: (1) your own family and their memories and documents; (2) public records, such as birth, marriage and death certificates at the County Clerk's office; (3) The U.S. Census, taken every ten years and available up to 1930, with listings of all residents with much detailed information; and (4) materials at your public library, such as newspapers on film, county histories, local histories, and city directories.

Take these charts along with you when go to the library, the courthouse, or to a family reunion.

*Nancy Bruce Crilly is a member of LAGHS and the president of the Will/Grundy Counties, Illinois Genealogical Society.*



## Welcome New Members

Anna Mae (Longhini) Lukancic, Joliet  
Jo Ann (Viskocil) North, Lockport  
Dolores (Jones) Smith, Maywood

# Romeoville settlers make history in Lockport on the I & M Canal

by Mabel Hrpcha,  
contributing writer

*At LAGHS's October meeting, local historian Mabel Hrpcha, spoke about several families who emigrated from the east coast to Romeoville, then on to Lockport.*

Romeoville emerged due to the building of the Illinois & Michigan Canal. Some of these early settlers had a connection to the canal. Following are two of the men and their families who first settled in Romeoville and later established themselves in Lockport.

Colonel George Martin and wife Hannah lived in Lockport while he was overseeing the construction of the canal in the Romeoville area. He acquired land and built a grain elevator. You can still see part of the foundation on the north side of the old canal, when you cross the 135<sup>th</sup> Street bridge.

Charles Boyer married Elizabeth Runyon, daughter of Armstead Runyon, the first permanent settler in what became Lockport. Boyer was a canal commissioner and lived in a fine house with elaborate gated gardens at 8<sup>th</sup> and State. Many remember the house as the local library. The estate was raised and replaced by a bank.

*For more, contact Mabel through LAGHS.*

---

## Asiago - Italian Heritage Share & Tell

with Coffee &

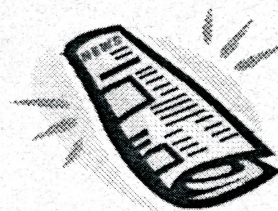
**Feb 23, 8am, Gladys Fox**  
**RSVP to Bonnie at 838.3988**

Need a ride? Call Bonnie





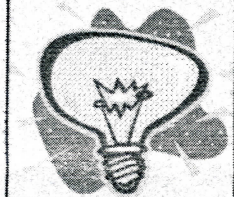
# NEWS You Can Use !



## Reciprocal Newsletters

LAGHS currently receives newsletters from the Will County Historical Society, the Romeoville Historical Society, and the Will-Grundy Genealogical Society. You can read these newsletters at The House in the Park.

**Conferences-  
Web Sites  
1-way  
to  
Enlightenment**



administrators, while others offer presentations for beginners, intermediates, and advanced genealogists.

Conferences held in local, state, regional, and out-of-state areas provide a wide variety of opportunities to learn, network, explore new sites, and vacation a little at the same time.

Upcoming, we will have a long list of conferences for this year. The list will be available at our meetings or by request via e-mail: [jlmunch@earthlink.net](mailto:jlmunch@earthlink.net) or regular mail to LAGHS.

**March 2-9 & 23, 2002**, Galesburg, IL, Carl Sandburg College, "Genealogy Computing Week" with Michael John Neill. \$35 per day. Web site: [www.rootdig.com/sandburg.html](http://www.rootdig.com/sandburg.html)  
Phone: 887.236.1862, ext.5337

**April 20**, Chicago, IL, Newberry Library, "Getting Beyond the Courthouse Door" \$45-

## LAGHS JOINS STATE AND NATIONAL ORGANIZATIONS

LAGHS is now a member of the Illinois State Historical Society, the Federation of Genealogical Societies, the National Genealogical Society, and the Illinois Association of Museums. We receive newsletters, quarterlies, and conference information. You may read these materials at The House in the Park.

from LAGHS Genealogist, **Jacqueline Munch**

## Conferences

There are many conferences each year. Some focus on training officers and

60, lunch and syllabus included. Web site: [www.newberry.org/nl/genealogy/L3gfriends.html](http://www.newberry.org/nl/genealogy/L3gfriends.html) Phone: 312:225.3510

**May 14-18**, Milwaukee, WI, "An American Sampler" Case studies; research problems. \$165. Web Site: [www.ngsgenealogy.org](http://www.ngsgenealogy.org)

## Web Sites

These sites will link you to many other sites, including libraries and archives, organizations, ethnic resources, immigration, records, audio tapes and more.

The links listed here are taken from the National Genealogical Society: [www.ngsgenealogy.org/links.html](http://www.ngsgenealogy.org/links.html)

Cyndie's List of Genealogy Sites on the Internet: [www.CyndisList.com](http://www.CyndisList.com)

FamilySearch Internet Genealogy Service: [www.familysearch.org](http://www.familysearch.org)

Genealogy.com: [www.genealogy.com](http://www.genealogy.com)

RootsWeb.com: [www.rootsweb.com](http://www.rootsweb.com)

## The House in the Park— Help Wanted!

Members are invited to join us at the house every Friday from 2 p.m. to 4 p.m.

We are planning our office and archival rooms, and need your ideas.

You can come to read publications or show us research that may be helpful to our anniversary book.

LAGHS will extend the days and times as soon as we have enough volunteers.



## CommunityEvents

## CommunityEvents

## LOCKPORT'S CULTURAL CAMPUS

<b><u>Gaylord Building</u></b> Opening February 6 <i>Disarming the Prairie:          Selected Photos of Medwin          National Tallgrass Prairie          by Terry Evans</i> (815) 838.4830  <b>Public Landing Restaurant          has new hours:          Call, (815) 838.7400</b>	<b><u>Will County Historical          Society</u></b>  Open Daily  1:30p - 4:00p  (815) 838.5080	<b><u>Illinois State Museum          Lockport Gallery          Norton Building</u></b>  Opening January 12  Carving a Culture: Works from the African Collection of the Illinois State Museum  (815) 838.7400
--	--	---

**LAGHS MEETINGS**

February 9, Executive Board Meeting

February 23, Members Meeting;

*Asiago-Italian Heritage Share & Tell with Coffee & . . .*

March 9, Executive Board Meeting

March 23, Members Meeting;

*Lockport Irish & Tour of St. Dennis with Georgene Bankroff*

Lockport Area Genealogical & Historical Society  
 1911 S. Lawrence Avenue  
 Lockport, IL 60441



D



# Lockport Area Genealogical & Historical Society

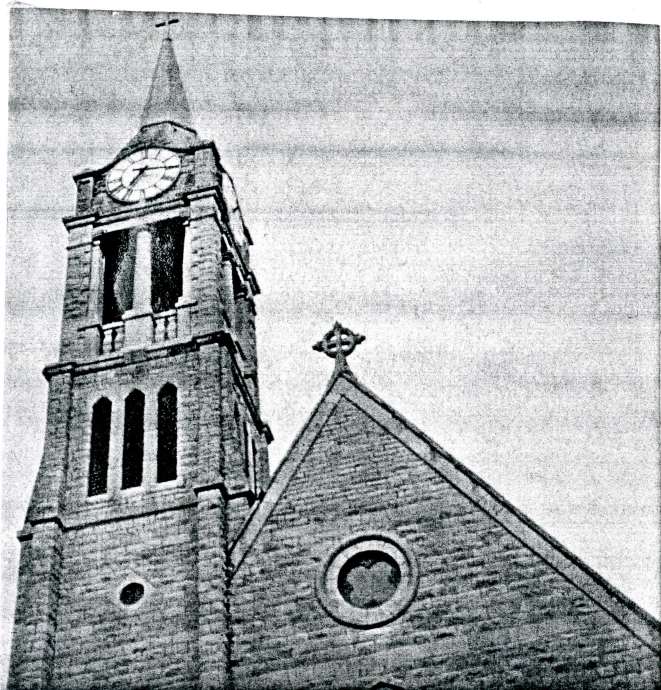


Photo: Sean Ellison, Kelvin Grove School, 2001

Saturday  
March 23, 2002  
meeting  
and  
special  
program

## **Lockport Irish and Tour of St. Dennis Church with Georgene Bankroff**

Georgene will sign copies of her book on St. Dennis.

**Meet at the Old St. Dennis Church Hall  
at 12<sup>th</sup> & Hamilton**

**RSVP is essential : call Bonnie at 838.3988**

NOTE: Program will be cancelled if there is a funeral.

Need a ride? Call Bonnie