

Pro-Seal Aero-Graft®

Polycarbon/Polycarbonate Nano Repair Material for Steel



Pro-Seal Aero-Graft® is a three-part, ARA graphite compound modified with superior resins, unique additives, and a designed curing agent to provide extraordinary strength, wear resistance, and adhesion.

*Nano Polycarbon/ polycarbonate integrated technology

Applications repair of:

- Generator impellers
- Pump housings
- Storage tanks
- Valves
- Cyclones
- Props
- Shuts

and other surfaces requiring abrasion and corrosion-resistant, lightweight, protective repair coating.

Application Instructions (guide only)

1. Surface must be dry, clean, and free of all loose particulate and bond-breaking matter.
2. Add Part B into Part A pre-measured work pack when the entire amount in the work pack is required. When lesser portions are required mix 1 Part B into 5 Parts A by volume or 1 Part B into 6 Parts A by weight
3. Mix thoroughly at low speed (to avoid air entrapment) for five minutes. Be sure the entire amount of Part B mixes in or comes in contact with the entire amount of Part A; also, being sure that the sides and bottom of mixing containers are scraped to obtain uniform mixing.
4. Aero-Graft may be applied with a putty knife, trowel, or spatula. The tool of choice may be moistened after initial application and lightly tooled over the surface to provide a clean, smooth finish. * The surface may also be machined. On large jobs when tooling and smoothing may be done prior to the complete

application of the material be sure to use separate moistened tools. Avoid contaminating Aero-Graft or surfaces with water prior to application which may affect the overall product performance and bond.

5. For specific application instructions or guide specifications, contact us at 800.349.7325 or information@prosealproducts.com

Specifications

Test	Data	Value
ASTM D 1706	Cured hardness	D 85 shore
ASTM D 1002	Adhesive tensile shear	2580 psi

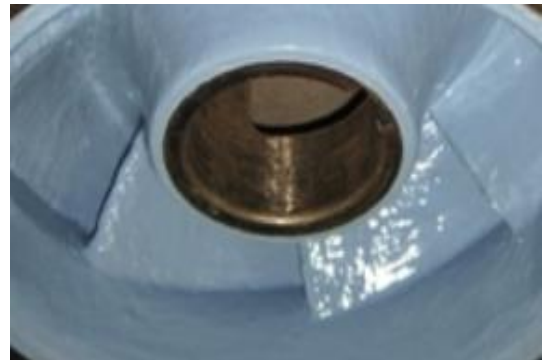
* Data based on laboratory tested materials

Technical

Information	Value
Material	2 part + filler
Color	Black
Viscosity	Paste, lightweight non-slump
Cure temperature	75°F/24°C (24 hours) 90°F/32°C (20 hours)
Pot life	75°F/24°C (30 minutes) 90°F/32°C (20 minutes)
Full cure	96 hours
Minimum Package	1 kilo or 2.2 lbs per work pack
Coverage rate per 1 work pack	288 square inch @ 125 mils = 1/8 inch
Packaging:	1, 5 or 55 gallons

Technical Support:

Contact our technical department at 800.349.73256, information@prosealproducts.com or visit our website for additional information



Pro-Seal Aero-Graft®

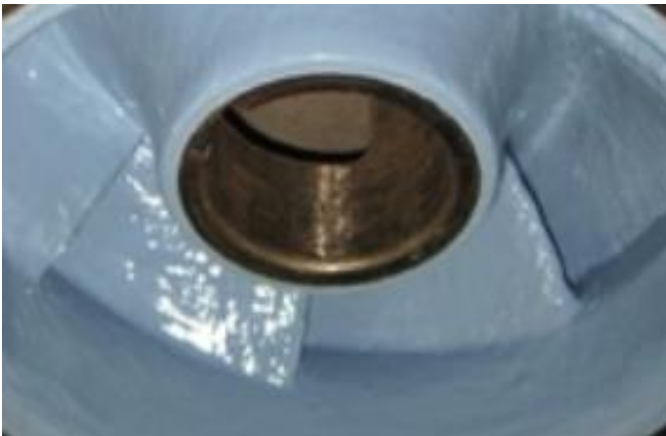
Polycarbon/Polycarbonate Nano Repair Material for Steel



No More of this!



When this happens, above, repair in place with Pro-Seal Aero-Graft, used extensively by PSE for repair of their hydroelectric water impeller properties, below repaired.



No more time consuming, painstaking, taking entire heavy impellers apart, moving them awkwardly around to repair the impeller wear surfaces. Just repair your impellers in place where access is practical. Repair patch and smooth the surfaces to efficient wear surfaces With Pro-Seal Aero-Graft®.

Pro-Seal Aero-Graft® is a fast curing easy to apply, machinable material for a long-lasting repair service life.

Talk to Pro-Seals Technical department for guide specifications and guide sketches where Pro-Seal Aero-Graft® is applicable.

Cautions:

Keep out of reach of children. May cause skin or eye irritation. This product may be harmful if swallowed. Do not induce vomiting. Use in well ventilated areas. Contact a physician immediately and always seek a physician's advice regarding first aid. Use only in commercial or industrial applications. Use only on intended surfaces. Contact manufacturer for specific application uses. See material safety data sheet for additional cautions.

Limited Warranty:

We warrant our product to be free of defects in material and workmanship; and to be in accordance with our company quality control standards. All data, statements, and recommendations made herein are based upon information we believe to be reliable, but are made without any representation, guarantee, or warranty of accuracy. Our products are sold on the condition that the user himself will evaluate them, as well as our recommendations, to determine their suitability for the user's own purpose before adoption. Also, statements regarding the use of our products or processes are not to be construed as recommendations for their use in violation of any patent rights or in violation of any applicable laws or regulations. Liability under any condition shall be limited to replacement of material only.