

# Pro-Seal PP/PK III topcoat B®



Part B of Pro-Seal PP/PK III, Harsh Chemical Resistant Barrier

**Pro-Sea PP/PK III topcoat B®** is part of a polycarbon/ polycarbonate high density two-part chemical and wear resistant coating. This product must be mixed with Pro-Seal PP/PK top coat A®, part-A and is designed to approach an entire infrastructure repair or new construction challenge.

## Advantages:

- Easy to install
- Performs best in harsh chemical environments
- Impervious to U.V. attack
- Easily spot repairable

## Applications:

- Primary Containment
- Secondary Containment
- Structural Preservation
- Rehabilitation
- Cosmetic improvement to high traffic, and chemically exposed areas
- Easily spot repairable

## Technical

Information	Value
Material	2 part
Mix time	4 minutes
Appearance	Paste
Application	See guide specification
Flash point	500°F
Pot life	45 minutes
Stain resistance	Excellent
Application per coat	1-120 mils
Cure to walkable	6-12 hours
Full cure	96 hours
Packaging:	2-part kit

## Instructions

1. Surface must be properly prepared, dry, clean, and free of all loose particulate and all bond-breaking matter and fluids.
2. For specific use application instructions or guide specifications, contact Pro-Seal's Technical Department at Pro-Seals toll free USA/Canada 800.349.7325, Int'l +1 205 451 9527 and/or email Pro-Seal Technical dept. at [information@prosealproducts.com](mailto:information@prosealproducts.com)

## Technical Support

Contact Pro-Seals technical department at USA/Canada 800.349.7325, Int'l +1 206 452 9527 or [information@prosealproducts.com](mailto:information@prosealproducts.com) for complete guide specifications in AIA format for your easy down load and incorporation into your project. *\*Extended long-term warranties are available for Pro-Seal Authorized applicators, for Pro-Seal warranty approved, projects.*

## Specifications

Test	Data	Value
ASTM D 695	Compressive strength	23,000 psi
ASTM D 1706	Cured hardness	88 shore D
ASTM D 790	Flexural strength	6,160 psi
ASTM D 1002	Adhesive tensile sheer	2,600 psi
ASTM D 638	Tensile strength	3,200 psi
ASTM D 2586	Cure shrinkage	.002 in
Taber abrasion resistance	500 gm head cs 17wheel wt. loss 1,000,cyclcs 350,000 cyclcs	0 MG .001 MG
FST 141 A method 4044	Total solids	100%
FST 141 A method 4291	Viscosity mixed 2 parts	7,000 cps

\* Data based on laboratory tested materials.



# Pro-Seal PP/PK III topcoat B<sup>®</sup>



Part B of Pro-Seal PP/PK III, Harsh Chemical Resistant Barrier

Pro-Seal PP/PK III<sup>®</sup>

## Chemical Resistance

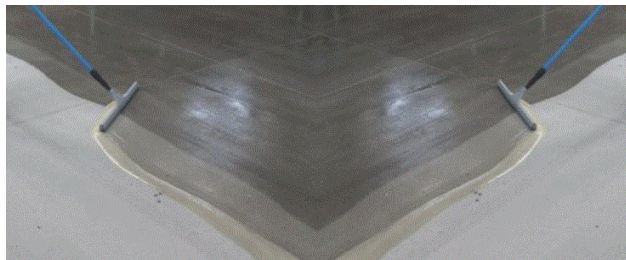
Cured material	Rating
Hydrochloric acid	Excellent
Sulfuric acid 60%	Very good
Nitric acid 25%	Very good
Chromic acid	Excellent
Kerosene	Excellent
Methanol	Excellent
Toluene	Excellent
Ammonia	Excellent
Nitrates	Excellent
Chlorinated solvent	Excellent
Phenol	Excellent
Sodium hydroxide 10%	Excellent
Sulfates	Very good



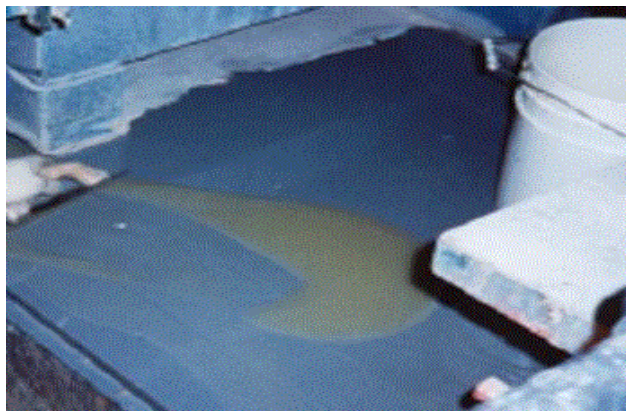
Wastewater Tank



Pickling Plant



The basics, prep, prime coat, build up coat and topcoat. Pro-Seal PP/PK III topcoat<sup>®</sup> is for resistance to the harsh vapors above the effluent line, below, in this coolant collection tank.



## Cautions:

Keep out of reach of children. May cause skin or eye irritation. May be harmful if swallowed. Do not induce vomiting. Use in well ventilated areas. Contact a physician immediately and always seek a physician's advice regarding first aid. Use only in commercial or industrial applications. Use only on intended surfaces. Contact manufacturer for specific application uses. See material safety data sheet for additional cautions.

## Limited Warranty:

We warrant our product to be free of defects in material and workmanship; and to be in accordance with our company quality control standards. All data, statements, and recommendations made herein are based upon information we believe to be reliable, but are made without any representation, guarantee, or warranty of accuracy. Our products are sold on the condition that the user himself will evaluate them, as well as our recommendations, to determine their suitability for the user's own purpose before adoption. Also, statements regarding the use of our products or processes are not to be construed as recommendations for their use in violation of any patent rights or in violation of any applicable laws or regulations. Liability under any condition shall be limited to replacement of material only.



16541 Redmond Way • Suite 363C • Redmond, WA 98052  
 Phone: 800.349.7325 • [information@prosealproducts.com](mailto:information@prosealproducts.com)  
[www.prosealproducts.com](http://www.prosealproducts.com) • © Copyright Pro-Seal