

Pro-Seal Power Kote II build up coat® B

Part B Polycarbon/Polycarbonate Two Part Chemical Resistant Mid-Coat Coating



Product Description:

Power Kote II build up B® is part-B of a Pro-Seal polycarbon/polycarbonate high density two-part chemical and resistant coating. This product must be mixed with Pro-Seal PowerKote II A®, part-A. Pro-Seal PowerKote II is part of a system designed to approach an entire infrastructure repair or new construction challenge.

Features:

- Easy to install
- Performs best in harsh chemical environments
- Impervious to U.V. attack
- Easily spot repairable

Applications:

- Primary Containment
- Secondary Containment
- Structural Preservation,
- Rehabilitation
- Cosmetic improvement to high traffic and chemically exposed areas

Technical

Information	Value
Material	2 part
Mix time	4 minutes
Appearance	Paste
Flash point	500°F
Pot life	45 minutes
Stain resistance	Excellent
Application per coat	1-120 mils
Cure to walk	6-12 hours
Full cure	96 hours
Packaging:	2 part kit

Application Instructions:

Surface must be dry, clean, and free of all loose particulate and bond-breaking matter. For specific application instructions or guide specifications, contact Pro-Seal's Technical Department 800.349.7325 or information@prosealproducts.com

Chemical Resistance

Cured material	Rating
Hydrochloric acid	Excellent
Sulfuric acid 60%	Very good
Nitric acid 25%	Very good
Chromic acid	Excellent
Kerosene	Excellent
Methanol	Excellent
Toluene	Excellent
Ammonia	Excellent
Nitrates	Excellent
Chlorinated solvent	Excellent
Phenol	Excellent
Sodium hydroxide 10%	Excellent
Sulfates	Very good

Specifications

Test	Data	Value
ASTM D 695	Compressive strength	23,000 psi
ASTM D 1706	Cured hardness	88 shore D
ASTM D 790	Flexural strength	6,160 psi
ASTM D 1002	Adhesive tensile shear	2,600 psi
ASTM D 638	Tensile strength	3,200 psi
ASTM D 2586	Cure shrinkage	.002 in
Taber abrasion resistance	500 gm head cs 17 wheel weight loss 1,000 cycles 350,000 cycles	0 MG .001 MG
FST 141 A method 4044	Total solids	100%
FST 141 A method 4291	Viscosity mixed 2 parts	7,000 cps

* Data based on laboratory tested materials.

Technical Support:

Contact our technical department at 800.349.7325, information@prosealproducts.com or visit our website www.prosealproducts.com for additional information. Extended long term warranties are

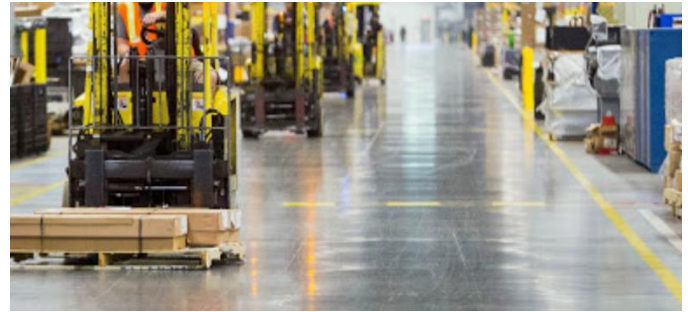


Pro-Seal Power Kote II build up coat[®] B

Part B Polycarbon/Polycarbonate Two Part Chemical Resistant Mid-Coat Coating



available when the Pro-Seal PowerKote Systems are applied by Pro-Seal Authorized Applicators on Pro-Seal authorized, projects.

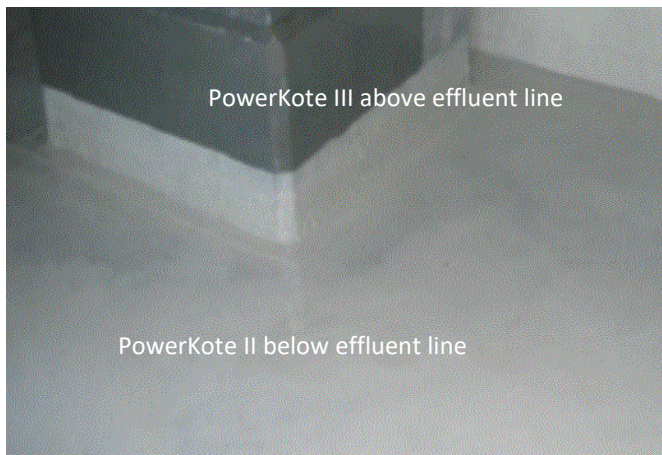


Automotive plants

The basics, prep, prime coat, build up coat and topcoat. Pro-Seal PowerKote II[®] system is for resistance to the harsh fluids below the effluent line, below, in this coolant collection tank.



Durable utility floors

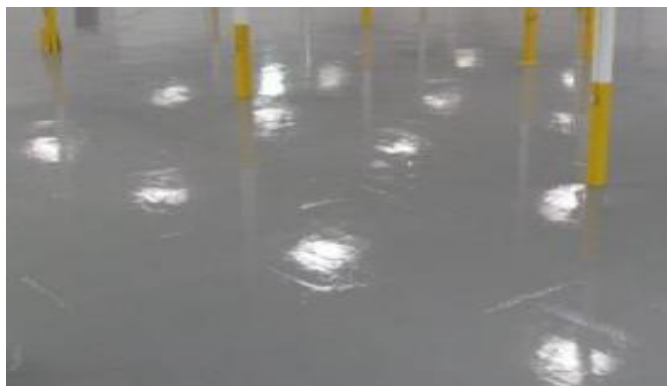


Cautions:

Keep out of reach of children. May cause skin or eye irritation. This product may be harmful if swallowed. Do not induce vomiting. Use in well ventilated areas. Contact a physician immediately and always seek a physician's advice regarding first aid. Use only in commercial or industrial applications. Use only on intended surfaces. Contact manufacturer for specific application uses. See material safety data sheet for additional cautions.

Limited Warranty

We warrant our product to be free of defects in material and workmanship; and to be in accordance with our company quality control standards. All data, statements, and recommendations made herein are based upon information we believe to be reliable, but are made without any representation, guarantee, or warranty of accuracy. Our products are sold on the condition that the user himself will evaluate them, as well as our recommendations, to determine their suitability for the user's own purpose before adoption. Also, statements regarding the use of our products or processes are not to be construed as recommendations for their use in violation of any patent rights or in violation of any applicable laws or regulations. Liability under any condition shall be limited to replacement of material only.



Warehouse floors where chemical storage occurs



16541 Redmond Way • Suite 363C • Redmond, WA 98052
Phone: 800.349.7325 • information@prosealproducts.com
www.prosealproducts.com • © Copyright Pro-Seal