

Pro-Seal TS-25™

Wood Sealer



Product Description:

Pro-Seal TS-25™ is a breathable sealer for exterior wood surfaces. This product is designed to inhibit U.V. attack, protect from weather and dry rot.

**Polycarbon/ polycarbonate integrated technology.*

Features:

- Easy to install LP Sprayer
- Extends life, shake/shingle, three-tab life, clay tile, cement tile, synthetic tile
- Brings back natural silver beauty of wood
- Protects from weather
- Does not alter the natural appearance of wood
- Resists moss, fungus, or lichen root embedment

Applications:

For sealing and preserving exterior natural wood surfaces when used with Pro-Seal WS 24, three-tab asphalt, clay, cement, and synthetic tile.

Application Instructions (guideline):

Protect all unintended surfaces. For specific application instructions or guide specifications, contact Pro-Seal's Technical Department at 800.349.7325 or information@prosealproducts.com.

Technical

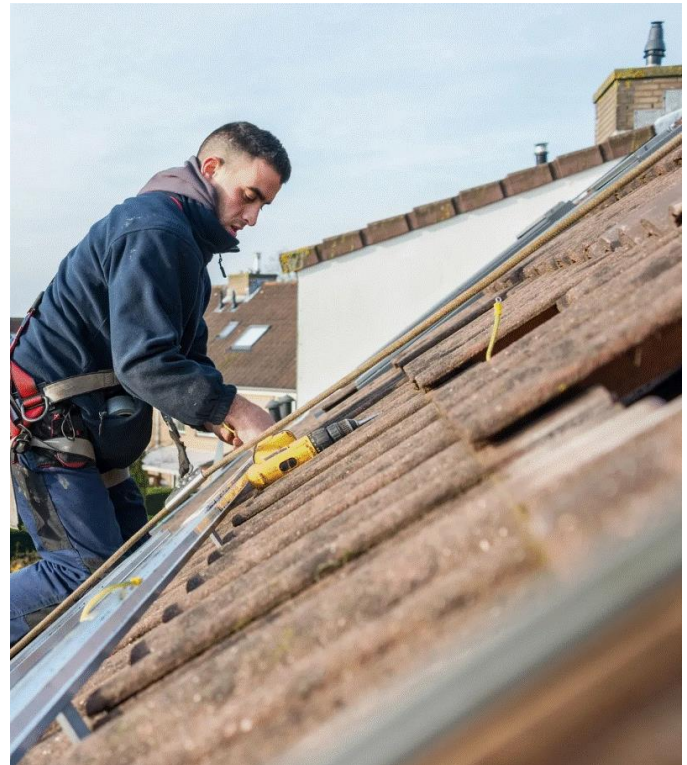
Information	Value
Material	1 part
Appearance	Liquid
Flammability	None
Coverage rate	400-600 ft ² /gallon
Odor	None
Shelf life	2 years when stored properly
Storage temperature	Above 32°F
Packaging:	1, 5 s or 55 gallons

Technical Support:

Contact our technical department at 800.349.7325, information@prosealproducts.com or visit our website www.prosealproducts.com for additional information.



Shakes/Shingles



Synthetic



16541 Redmond Way • Suite 363C • Redmond, WA 98052
Phone: 800.349.7325 • information@prosealproducts.com
www.prosealproducts.com • © Copyright Pro-Seal

Pro-Seal TS-25™

Wood Sealer



Clay Tile



Three-Tab Asphalt

Cautions:

KEEP AWAY FROM GLASS protect glass from contact. Roof surfaces are very slippery when using WS 24 and/or TS 25 wear appropriate footwear and use appropriate protective gear. Keep out of reach of children. May cause skin or eye irritation. This product may be harmful if swallowed. Do not induce vomiting. Contact a physician immediately and always seek a physician's advice regarding first aid. Use only in commercial or industrial applications. Use only on intended surfaces. Contact manufacturer for specific application uses. See material safety data sheet for additional cautions.

Limited Warranty:

We warrant our product to be free of defects in material and workmanship; and to be in accordance with our company quality control standards. All data, statements, and recommendations, made herein are based upon information we believe to be reliable, but are made without any representation, guarantee, or warranty of accuracy. Our products are sold on the condition that the user himself will evaluate them, as well as our recommendations, to determine their suitability for the user's own purpose before adoption. Also, statements regarding the use of our products or processes are not to be construed as recommendations for their use in violation of any patent rights or in violation of any applicable laws or regulations. Liability under any condition shall be limited to replacement of material only.



16541 Redmond Way • Suite 363C • Redmond, WA 98052
Phone: 800.349.7325 • information@prosealproducts.com
www.prosealproducts.com • © Copyright Pro-Seal