

## 16V TO 12V VOLTAGE REDUCER INSTALLATION INSTRUCTIONS

MJ1612VR

### INCLUDED:

- VOLTAGE REDUCER
- WIRING HARNESS
- 2 SELF TAPPING SCREWS



Voltage Reducer

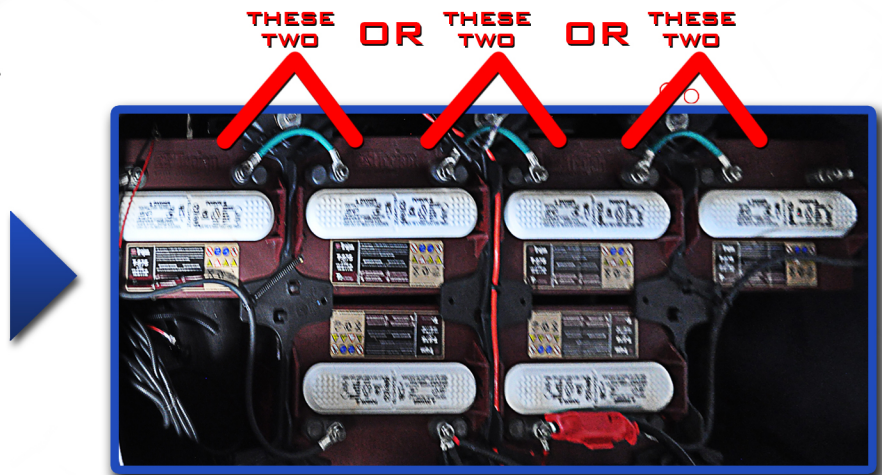


Wiring Harness

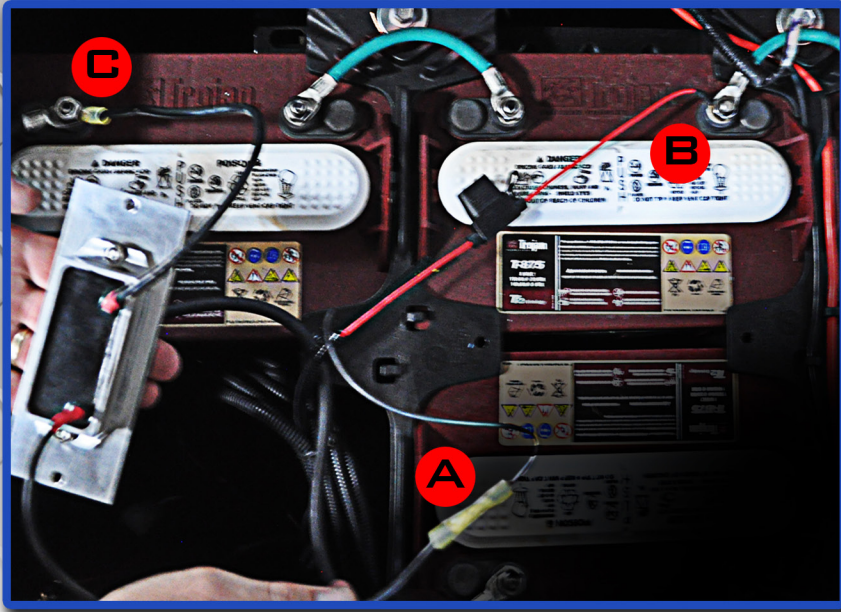
**BE SURE THE GOLF CART IS OFF AND THERE IS NO POWER RUNNING THROUGH YOUR VEHICLE. UNHOOK NEGATIVE TERMINAL FROM MAIN BATTERY.**

Isolate which batteries you will use. Be sure that you are wiring your reducer to 2 batteries that are connected together. Also use a multimeter to insure that you are going to be using 16 volts.

(We will be using the first pair of batteries for these instructions)



Determine where you will mount your reducer. Be sure to attach the voltage reducer to metal. Preferably mounted somewhere to the frame. The voltage reducer gets extremely hot and can melt plastic.



A) Connect the wire with the 2 way standard butt terminal to your light harness black wire.

B) Next connect the red wire from your light harness to the positive terminal on the battery.

C) Then connect the wire with the ring terminal to the negative terminal of the other battery.

After the voltage reducer has been mounted and all the wiring from step 3 is complete, connect the voltage reducer harness to the wiring harness as shown. Then replace and tighten the negative terminal on your main battery.

