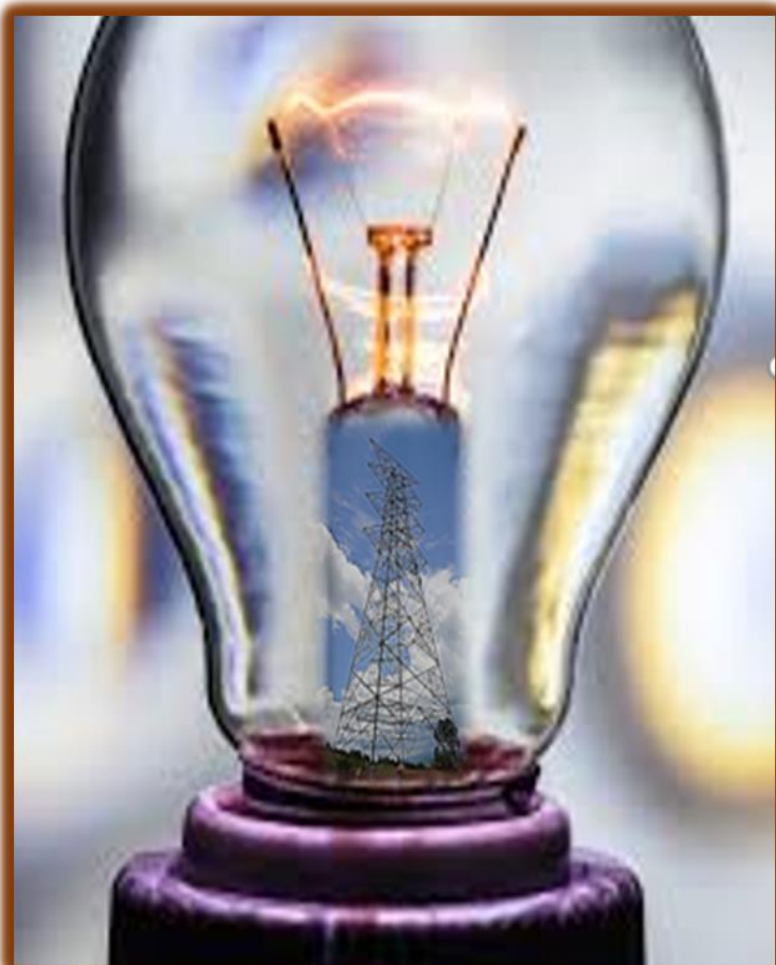




2021

Pro-Tech Services:

Green House Gases Reduction Targets: GHGRT-001, Rev. 0



Contact: Michelle Sora, PE
msora@pro-techservices.co

PRO-TECH SERVICES, LLC

Green House Gases Reduction Target: GHHRT-001, Rev.0

effective: April 20, 2021

GHG Reduction Targets

Sustainability and the reduction to Green House Gases (GHG) is important to Pro-Tech Services and its affiliates. The change in climate conditions possess a potential threat towards the world and to the business of Pro-Tech Services below is our calculated GHG for 2021:

[Back to Intro](#)
[Back to Summary](#)
[Help](#)
[Help - Market-Based Method](#)

Scope 2 Emissions from Purchase of Electricity

 EPA CENTER FOR CORPORATE
CLIMATE LEADERSHIP
U.S. Environmental Protection Agency

Tips: Enter electricity usage by location and then look up the eGRID subregion for each location.
If you purchase renewable energy that is less than 100% of your site's electricity, see the example in the market-based method Help sheet.

Table 1. Total Amount of Electricity Purchased by eGRID Subregion

					Market-Based						Location-Based		
					Use these cells to enter applicable market-based emission factors								
					Emission Factors			Emissions			Emissions		
Source ID	Source Description	Source Area (sq ft)	eGRID Subregion where electricity is consumed	Electricity Purchased (kWh)	CO ₂ Emissions (lb/MWh)	CH ₄ Emissions (lb/MWh)	N ₂ O Emissions (lb/MWh)	CO ₂ Emissions (lb)	CH ₄ Emissions (lb)	N ₂ O Emissions (lb)	CO ₂ Emissions (lb)	CH ₄ Emissions (lb)	N ₂ O Emissions (lb)
Bldg-012	East Power Plant	12,517	HIMS (HICC Miscellaneous)	200,000	0	0	0	0.0	0.0	0.0	230,400.0	19.0	3.0
BLD-001	Main office in Tucson	1,456	AZNM (WECC Southwest)	7,134	<enter factor>	<enter factor>	<enter factor>	7,445.5	0.6	0.1	7,445.5	0.6	0.1
BLD-002	Office in Tempe	721	AZNM (WECC Southwest)	7,357	<enter factor>	<enter factor>	<enter factor>	7,677.8	0.6	0.1	7,677.8	0.6	0.1
					<enter factor>	<enter factor>	<enter factor>						

Our average GHG emissions per sq foot for that year are 6.66 lbs. of CO2 per sq foot. In accordance with local, state, and federal laws, it is Protech Services goal to reduce our Carbon emissions by 40% in the next ten years and to be carbon neutral within the next twenty years.