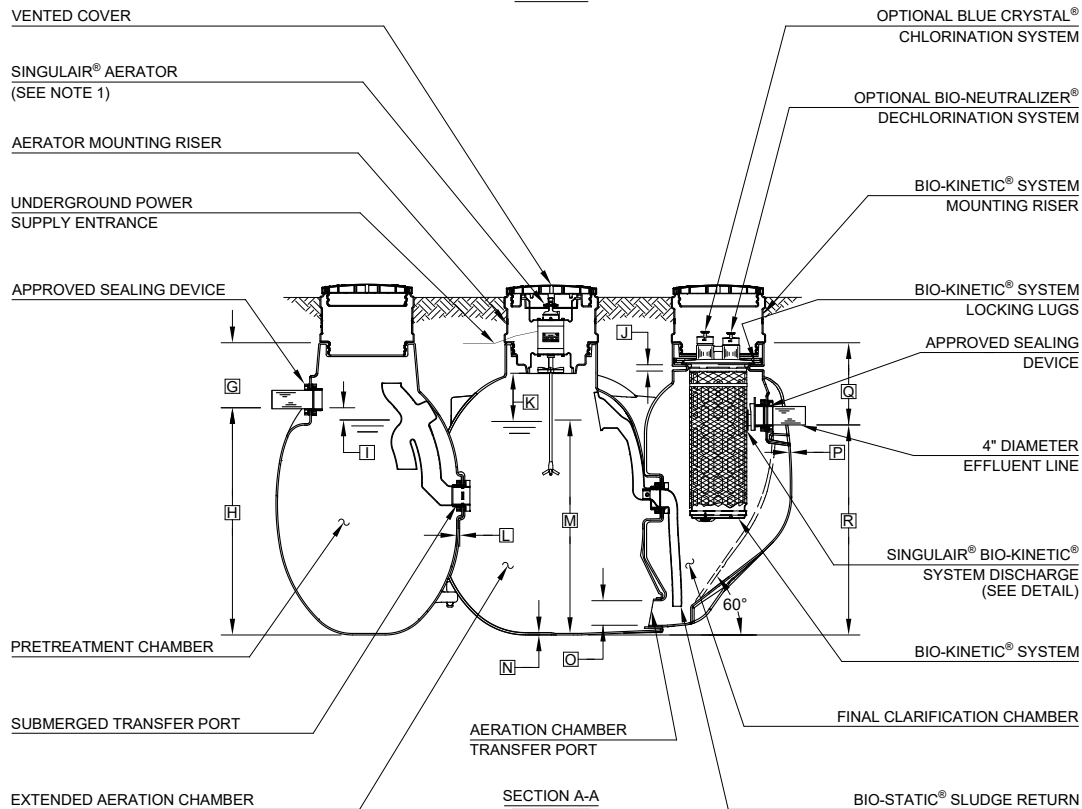
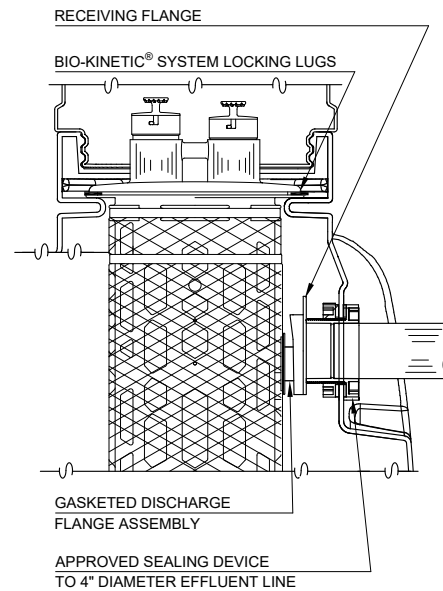


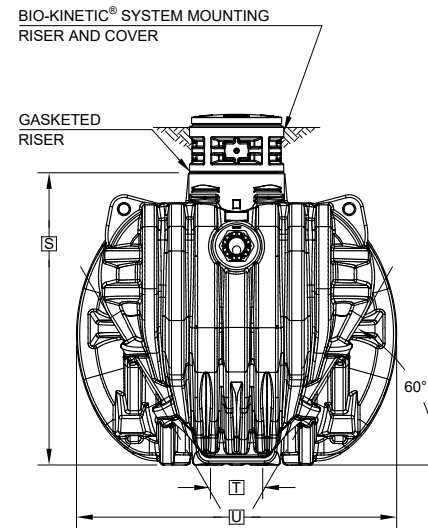
PLAN VIEW



SECTION A-A



BIO-KINETIC® SYSTEM DISCHARGE DETAIL



OUTLET END VIEW

NOTE: TOTAL SYSTEM CAPACITY: 1,300 GALLONS
 RATED CAPACITY: 500 GALLONS PER DAY

GENERAL NOTES:

- ① SINGULAIR® AERATOR, AS TESTED AND ACCEPTED BY NSF.
- ② FALL THROUGH SINGULAIR® PLANT FROM INLET INVERT TO OUTLET INVERT IS FOUR INCHES. INLET INVERT IS 16 INCHES BELOW THE RISER MOUNTING SURFACE.
- ③ ON DEEPER INSTALLATIONS, RISERS MUST BE USED TO EXTEND AERATOR MOUNTING RISER AND BIO-KINETIC® SYSTEM MOUNTING RISER TO GRADE. INSPECTION COVER ON PRETREATMENT CHAMBER MUST BE DEVELOPED TO WITHIN TWELVE INCHES OF GRADE.
- ④ REMOVABLE COVERS ON RISERS ARE EACH SECURED TO PREVENT UNAUTHORIZED ACCESS.
- ⑤ CONTACT THE LOCAL, LICENSED SINGULAIR® DISTRIBUTOR FOR ELECTRICAL REQUIREMENTS.

PROJECT ENGINEER'S APPROVAL:
 I (WE) HEREBY CERTIFY THAT THIS DRAWING HAS BEEN CHECKED AND IS APPROVED FOR USE IN CONFORMITY WITH THE CONTRACT DOCUMENTS.

DATE: _____

NAME: _____

CONTRACTOR'S CERTIFICATION:
 I (WE) HEREBY CERTIFY THAT THIS DRAWING HAS BEEN CHECKED AND IS APPROVED FOR USE IN CONFORMITY WITH THE CONTRACT DOCUMENTS.

DATE: _____

NAME: _____

CRITICAL DIMENSIONS

A	1'- 5 1/2"	N	0'- 0 3/8"
B	3'- 3"	O	0'- 6"
C	3'- 5 1/4"	P	0'- 0 3/8"
D	4'- 2 1/4"	Q	1'- 8"
E	2'- 8 3/4"	R	4'- 3 1/2"
F	10'- 6 1/2"	S	5'- 11 1/2"
G	1'- 4"	T	1'- 4"
H	4'- 7 1/2"	U	6'- 6"
I	0'- 3"	V	
J	0'- 1 1/2"	W	
K	1'- 0"	X	
L	0'- 0 3/4"	Y	
M	4'- 4"	Z	

U.S. AND FOREIGN PATENTS PENDING		07-25-2018 E
		APPROVED BY: JMM DATE: 08-04-2010 SCALE: NTS
© MMXVIII	<small>THIS DRAWING IS THE PROPERTY OF NORWECO. IT IS TO BE USED ONLY FOR THE PROJECT AND SITE SPECIFICALLY IDENTIFIED ON THIS DRAWING. IT IS NOT TO BE REPRODUCED OR TRANSMITTED IN ANY FORM OR BY ANY MEANS, WITHOUT WRITTEN PERMISSION FROM NORWECO.</small>	DRAWING NO: PC-5-7122