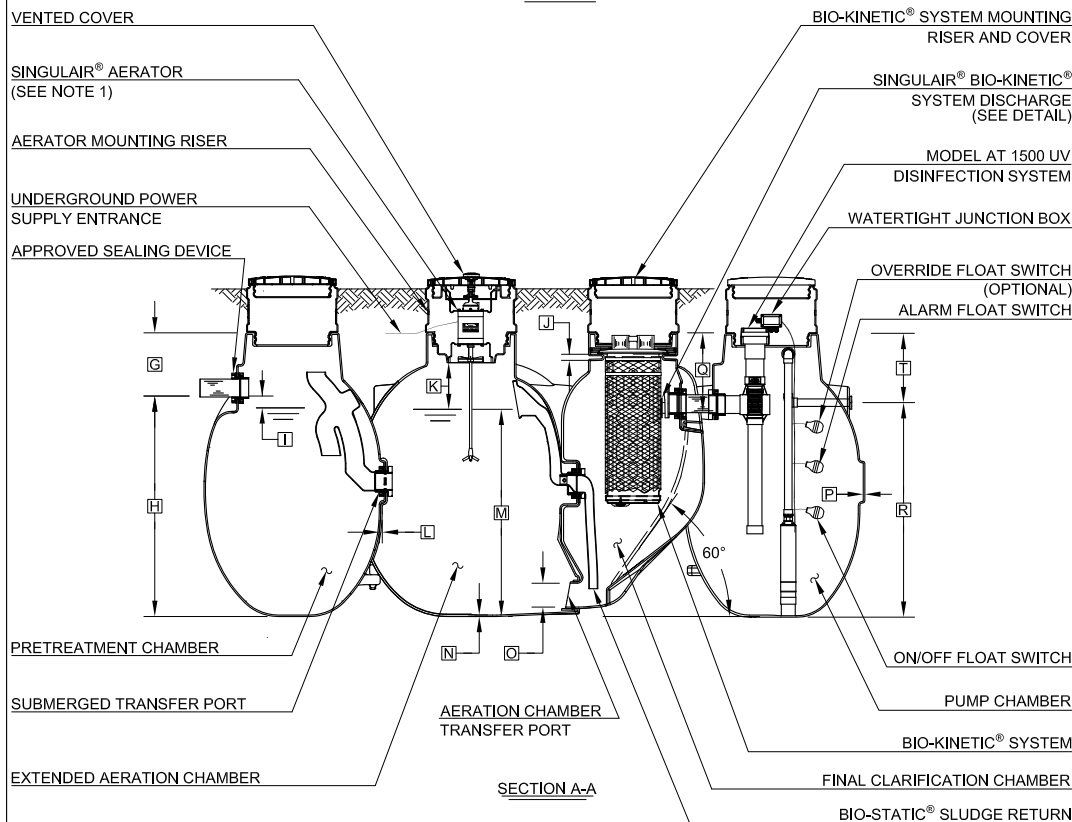
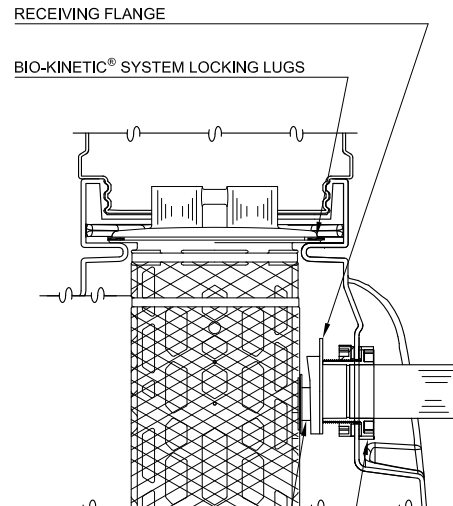


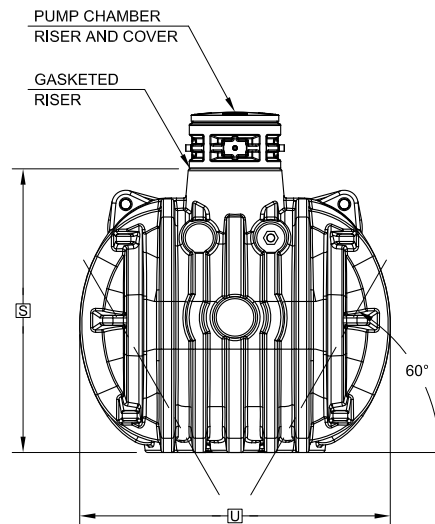
PLAN VIEW



SECTION A-A



BIO-KINETIC® SYSTEM DISCHARGE DETAIL



OUTLET END VIEW

NOTE: TOTAL SYSTEM CAPACITY: 1,750 GALLONS
 RATED CAPACITY: 600 GALLONS PER DAY

GENERAL NOTES:

- ① SINGULAIR® AERATOR, AS TESTED AND ACCEPTED BY NSF.
- ② FALL THROUGH SINGULAIR® PLANT FROM INLET INVERT TO OUTLET INVERT IS FOUR INCHES. INLET INVERT IS 16 INCHES BELOW THE RISER MOUNTING SURFACE.
- ③ ON DEEPER INSTALLATIONS, RISERS MUST BE USED TO EXTEND AERATOR MOUNTING RISER AND BIO-KINETIC® SYSTEM MOUNTING RISER TO GRADE. INSPECTION COVER ON PRETREATMENT CHAMBER MUST BE DEVELOPED TO WITHIN TWELVE INCHES OF GRADE.
- ④ REMOVABLE COVERS ON RISERS ARE EACH SECURED TO PREVENT UNAUTHORIZED ACCESS.
- ⑤ CONTACT THE LOCAL, LICENSED SINGULAIR® DISTRIBUTOR FOR ELECTRICAL REQUIREMENTS.

PROJECT ENGINEER'S APPROVAL:
 I (WE) HEREBY CERTIFY THAT THIS DRAWING HAS BEEN CHECKED AND IS APPROVED FOR USE IN CONFORMITY WITH THE CONTRACT DOCUMENTS.

DATE: _____

NAME: _____

CONTRACTOR'S CERTIFICATION:
 I (WE) HEREBY CERTIFY THAT THIS DRAWING HAS BEEN CHECKED AND IS APPROVED FOR USE IN CONFORMITY WITH THE CONTRACT DOCUMENTS.

DATE: _____

NAME: _____

CRITICAL DIMENSIONS

A	3'- 3"	N	0'- 0 3/8"
B	3'- 5 1/4"	O	0'- 6"
C	4'- 2 1/4"	P	0'- 0 3/8"
D	2'- 8 3/4"	Q	1'- 8"
E	3'- 4 3/4"	R	4'- 6"
F	14'- 0"	S	5'- 11 1/2"
G	1'- 4"	T	1'- 5 1/2"
H	4'- 7 1/2"	U	6'- 6"
I	0'- 3"	V	
J	0'- 1 1/2"	W	
K	1'- 0"	X	
L	0'- 0 3/4"	Y	
M	4'- 4"	Z	

U.S. AND FOREIGN PATENTS PENDING		REVISION DATE	N/A	NO. REVISION	N/A
		APPROVED BY	JMM	DATE	08-08-2022
© MMXXII	SINGULAIR® GREEN WITH PUMP TANK, UV SYSTEM, PUMP, AND FLOAT SWITCHES 500GPD SYSTEM	DATE	08-08-2022	SCALE	NTS
	<small> THESE DRAWINGS ARE THE PROPERTY OF NORWECO. NO PARTS OF THESE DRAWINGS ARE TO BE REPRODUCED OR TRANSMITTED IN ANY FORM OR BY ANY MEANS, ELECTRONIC OR MECHANICAL, INCLUDING PHOTOCOPYING, RECORDING, OR BY ANY INFORMATION STORAGE AND RETRIEVAL SYSTEM. </small>	DRAWING NO.	PC-5-7201		