

# AIRTORQUE

## Coated for Hazardous Environments



**Tolerant of Questionable Air Supply**  
Why it has Special Coatings

**Coated Inside & Outside**  
Pitting Resistant

**Electro Nickel Plated Pinion**  
All SSt Hardware

**Viton Seals**  
Holds up better w various Gases

**Deeper Pinion Teeth Engagement**  
2.5 teeth v 1 for similar models

**Largest Rack & Pinion**  
Smaller Footprint than Scotch Yoke





# ESD PACKAGES

## Slab Gate Pneumatics v AirTorque/Piper

### What's the Same?

Both are Pneumatic

Both are controlled by Solenoid

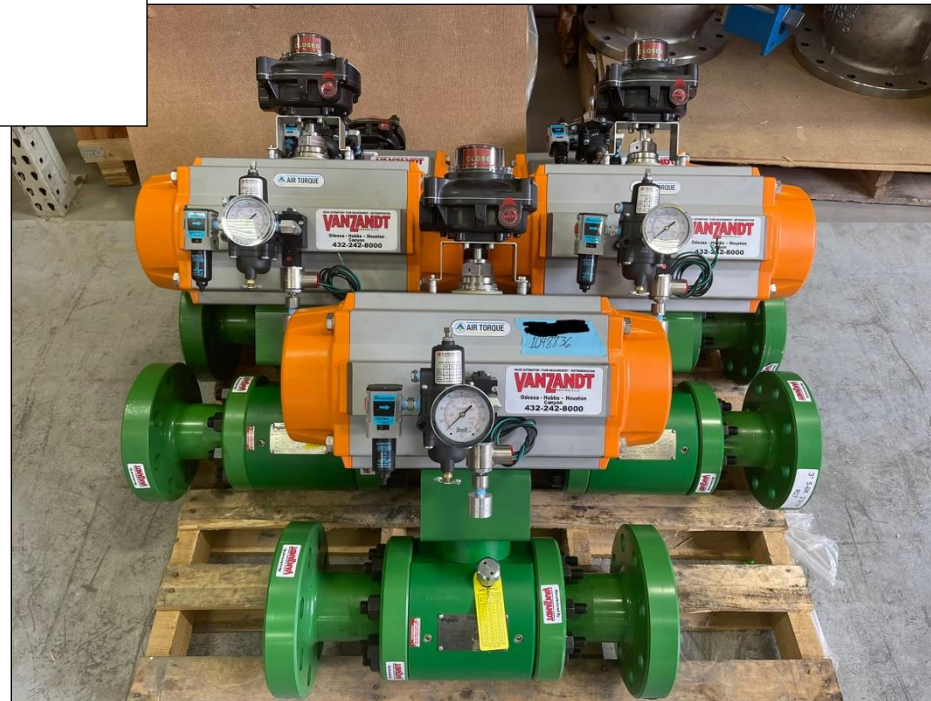
### What's Different?

AirTorque is better than Diaphragm Actuator

Visual Position Feedback

Mechanical Position Feedback

Into your Controls





# ESD PACKAGES

## Ideal Pneumatic Shut Down Valve Package



### Visual Position Indication

Limit Switch-based

### Position Feedback

Limit Switch-based

### NAMUR Solenoid Valve

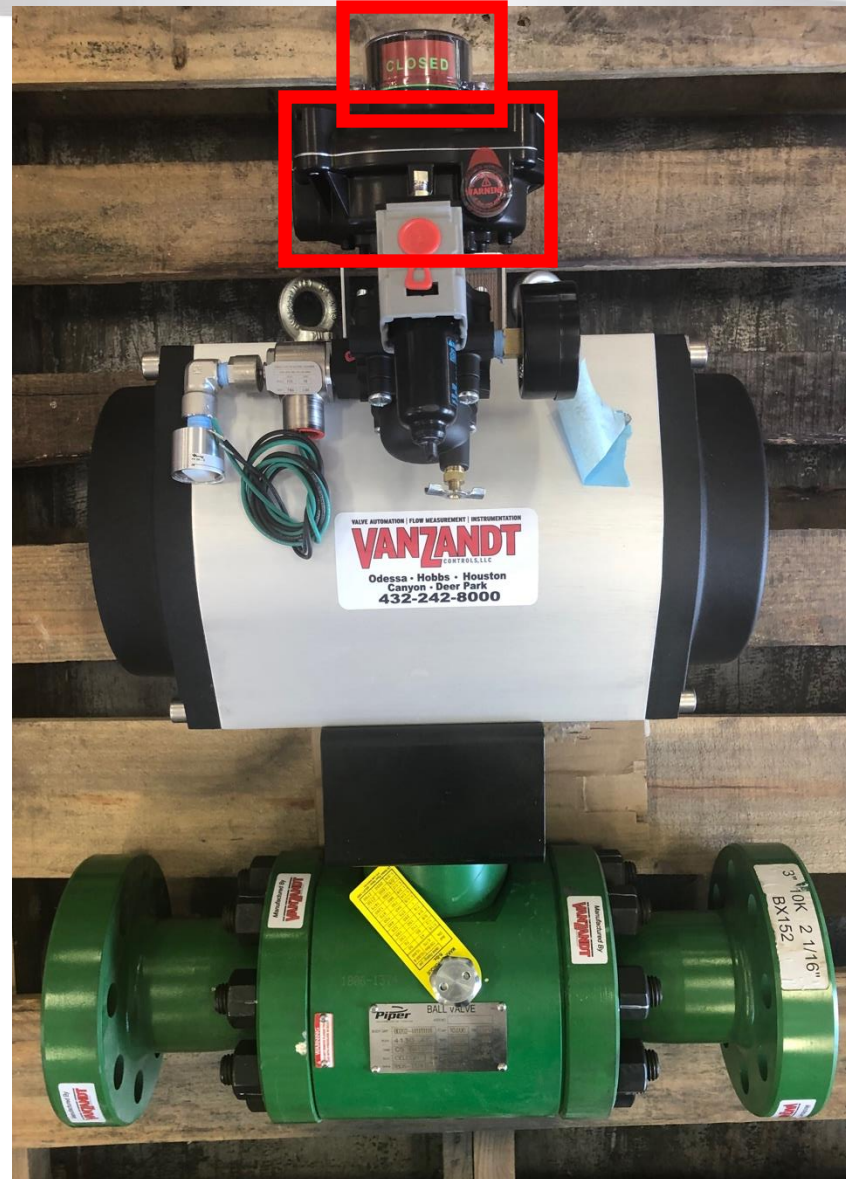
Bolts directly

No Pipe or Tube Fittings

### Speed Controls

Lockable

Controls Opening & Closing Speeds  
Independently!!



### Filter Regulator

Regulates Incoming Air  
To right Pressure

### Coalescing Filter w Auto-Drain

All Metal Construction  
No Poly-carbonate/Plastic

### Dirt Excluder

On the Solenoid  
Lets Solenoid breath  
Excludes dirt & debris