



# MAHARASHTRA SALES CORPORATION

**STRENGTH AND DURABILITY FOR LIFE**

TMT | Cement | Structural Steel | Industrial Sheds | Gypsum

**WE DEAL IN**



**MAHARASHTRA  
SALES CORPORATION**

- ✓ TMT STEEL**
- ✓ CEMENT**
- ✓ STRUCTURAL STEEL**
- ✓ COLOUR COATED & GI SHEETS**
- ✓ PAVING BLOCKS**
- ✓ CRUSH & RIVER SAND**
- ✓ GYPSUM**





MAHARASHTRA  
SALES CORPORATION



# > TMT STEEL

Thermo Mechanical Treated Steel

Steel Strength - 500D

Size: 8mm, 10 mm, 12 mm, 16mm  
20 mm, 25mm & 32mm





MAHARASHTRA SALES CORPORATION

# > CEMENT

PPC, 43, 53 Grade



## Premium Brands



## Other Brands





MAHARASHTRA  
SALES CORPORATION

# > STRUCTURAL STEEL

Various Types of Structural Steel

Channel, Ibeam, Angles, Pipes, Square Pipe,  
Round Pipe, Square bars, Round bars, Flats.  
*HR Plate & MS Plate (All in MS)*





# STRUCTURAL STEEL



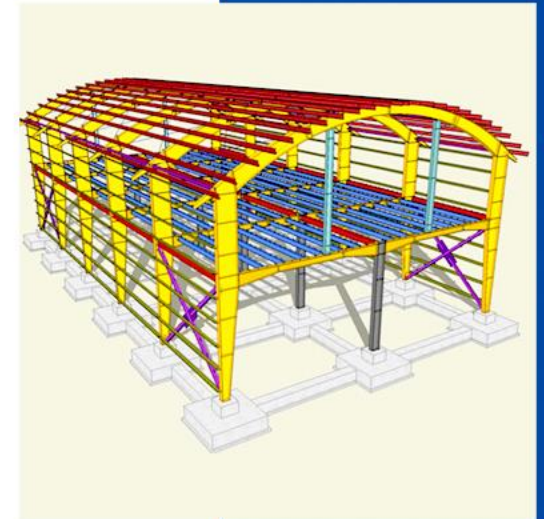
MAHARASHTRA  
SALES CORPORATION



# > INDUSTRIAL SHED



MAHARASHTRA  
SALES CORPORATION



STEEL NEEDED FOR INDUSTRIAL SHED



MAHARASHTRA  
SALES CORPORATION

# > COLOUR COATED & GI SHEET

Industrial shed

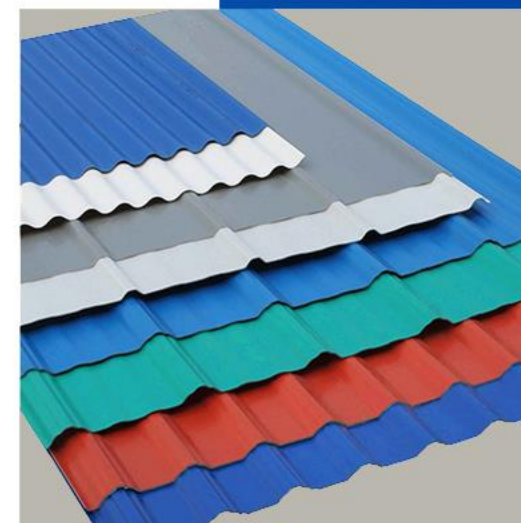
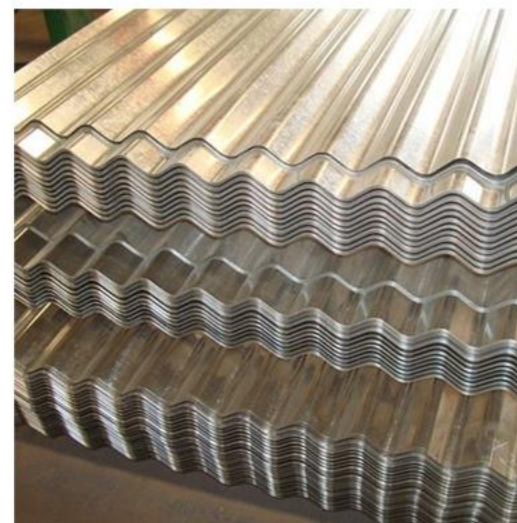
GI Sheet

Colour Coated Shed

All size- 8/10/12/16/18 Ft.

Thickness- 0.40 to 0.60

Channel Partners







MAHARASHTRA  
SALES CORPORATION

# > PAVING BLOCKS

## Types

Rubber Mould Gloss Finish

Matte Finish





MAHARASHTRA  
SALES CORPORATION

# > RIVER SAND, CRUSH SAND & BRICKS & GYPSUM



# SELECT FEW PROJECTS



MAHARASHTRA  
SALES CORPORATION



Pinnacle Group | Rohan Developers | Vilas Javdekar | City Group



**MAHARASHTRA  
SALES CORPORATION**

OUR FEW  
> **CLIENTS**

**Vilas Javdekar  
Rohan Builders  
PSC Infracon  
Yashada Group  
Amanora City Group  
Unique Enterprises  
Buttepatil Projects  
Kiran creators And Developers**

**Atlas copco  
Sable – Sanjivani  
Profive Engineering solutions  
Tara Group  
Suda Infrastructure  
Ameya Corrosion Solution Pvt. Ltd  
Poona Ranchi Cargo Movers Pvt. Ltd  
Asian Paint Ltd**



**MAHARASHTRA  
SALES CORPORATION**



Contact us: **9623449818**  
[maharashtracorporation@gmail.com](mailto:maharashtracorporation@gmail.com)

## **WHY MSC?**

**One Stop Solution**  
**Brand Assured Products**  
**Believes in Quality**

### **Maharashtra Sales Corporation**

Gat No. 163, Sidheshwar Complex,  
Nr. Shell Petrol Pump, Pune Nasik  
Highway, Chimbli Phata, Kuruli, Pune,  
Maharashtra 410501

**We are Suppliers, Dealers, Wholesalers, Distributors, Traders, Retailers and Project sales**