



“We listen, We Act”

2024

Allegheny Valve and Coupling, Inc.

www.alleghenycoupling.com

+1 814 723 8150





We Listen, We Act !

Family owned and operated, since 1955 Allegheny Valve & Coupling, Inc. has been dedicated to the tank transport industry.

Allegheny was the catalyst of the industry wide conversion from schedule 40 to lightweight & thin walled fittings on tank transport vehicles.

We then designed valves and fittings for the new interchangeable lightweight designs.

Allegheny's fittings became the standard in the industry as it remains today.



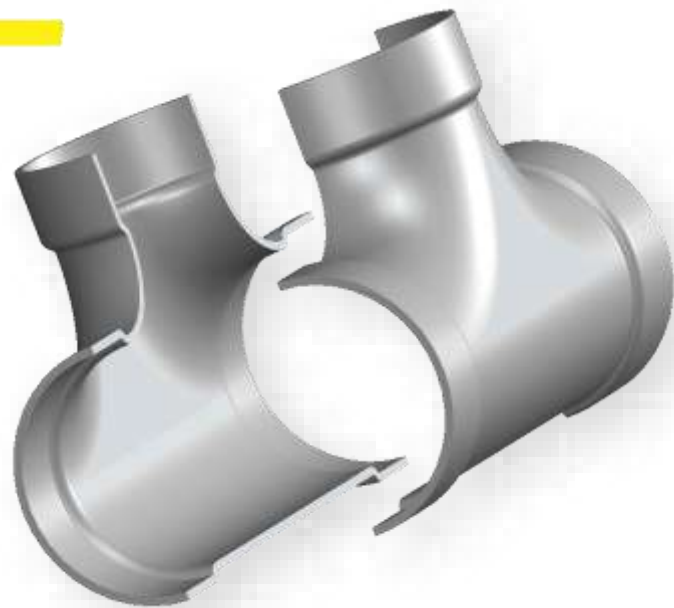


“With fairness, honesty and intelligence our staff guarantees their commitment to delivering outstanding performance and support to our customers.”

***Look for our
Welder’s
marks!***



WELDED



- **Formed** sheet to create perfect halves
- 100% **weld** penetration by ASME certified welders
- Lightweight and **Strong**
- Working Pressure of 75 psi
- **Streamlined** for improved and faster flow
- **Belled** ends provide adjustment for easier fitting and faster welding
- Most items are made in 2", 2.5", 3", 4" & 6" sizes in steel, stainless steel and aluminum



ALLEGHENY

TUBE-FLOW



- Manufactured with our Aircraft refueling grade extruded aluminum
 - Lightweight and **Strong**
 - Working Pressure of 250 psi
- **Belled** ends provide adjustment for easier fitting and faster welding
 - Most items are made in 2", 3", 4" & 6" sizes in aluminum



ALLEGHENY

ALLEGHENY VALVE & COUPLING

GROOVED COUPLINGS



- **Aluminum cast** in 2", 2.5", 3", 4" & 5"
- W.P. 300 psi

- **Ductile Iron** in 2", 3" & 4"
- W.P. 300 psi
- e-Black or Yellow Zinc



- **Stamp Steel** in 2", 2.5", 3", 4", 5" & 6"
- **Welded Bolt** for easy installation (MK II)
- W.P. 150 psi
- **Zinc Flake Gold** for maximum corrosion protection

ALLEGHENY

FLANGES



- **TTMA** Flued or Flat
- **ANSI** Slip-on flat face 150#
- Square Flanges for TCS Flow Meters or Pumps
 - Blind, Reducing concentric & eccentric
- Most items are made from 1.5 to 6" sizes in aluminum, steel and stainless steel
- **Gaskets** available for all flanges in different materials



DRAIN POCKETS



Welded studs



Deep Dish



Removable Studs

- **Best** industry pricing
- Welded or Removable Studs
- **Splash** deflector alternative option
- 3" & 4" in aluminum, steel or stainless steel
- **Gaskets** available for all our drain pockets (sumps)



ALLEGHENY

PADDLE VALVES



- **Anodized 1.125" Aluminum Body**
- **EverGreen-FKM Gasket** (no need put in extra flange gasket)
- **Stainless Steel Handle and Paddle**
- Push-act Handle with 10 metered positions
 - Working Pressure of 150 psi
 - Available in **TTMA 2", 3" & 4"**

ALLEGHENY

STRAINERS

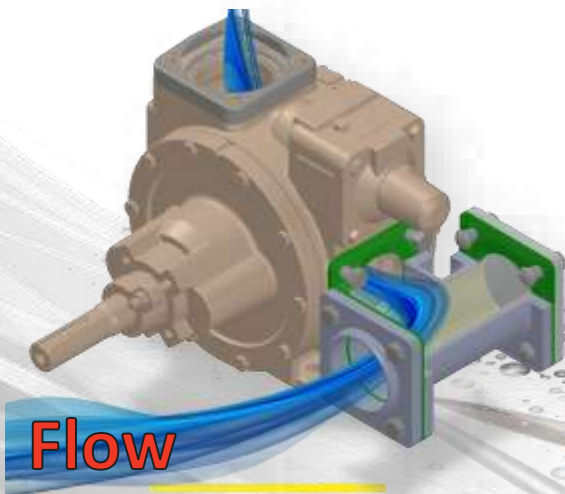
Cast

2 in 1

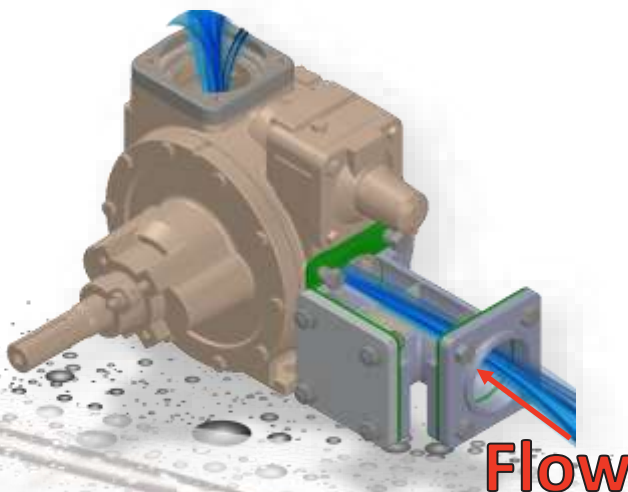


- **Anodized Aluminum** body in sizes of 2.5" & 3"
- Stainless Steel 1/16" perforated Screen
- Compatible with Blackmer® and Paragon® pumps
- **Less** than half of the **weight** compared to cast iron strainers
- **EverGreen-FKM** gaskets and aluminum **flange included** (steel flanges available upon request)
- **Double Function:** works as a Tee Strainer or Straight Strainer

Tee Strainer



Straight Strainer



ALLEGHENY

NIPPLES



Nipples grooved and threaded in aluminum, steel and stainless steel



King Combination nipples hose barbs
from 1.5" to 4" in aluminum steel and stainless steel



CAMLOCKS



**TTMA THREADED
ADAPTER**



TTMA FEMALE ADAPTER



TTMA MALE ADAPTER



TYPE DC



TYPE A



TYPE F



TYPE FA



TYPE C

ALLEGHENY

TANK TRUCK PARTS



**TOTAL CONTROL SYSTEMS PD
FLOW METERS**



**API VALVE BOTTOM
LOADING/UNLOADING
ADAPTER WITH SIGHT
GLASS**



PNEUMATIC VAPOR RECOVERY VALVE



API 4X4 GRAVITY DROP ADAPTER



API DUST CAP



VAPOR RECOVERY DUST CAP

AUTHORIZED DISTRIBUTOR OF:



ALLEGHENY VALVE & COUPLING

DRY BULK



Aluminum Cookie Cutter w/ 316 Stainless Steel Cone

- **Quick couplings**
- Full-Flow **Cookie cutter** for the separation and aerating expansion of highly compacted dry bulk products; ensuring constant flow discharge

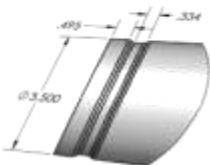
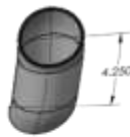
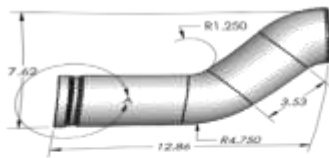


ALLEGHENY

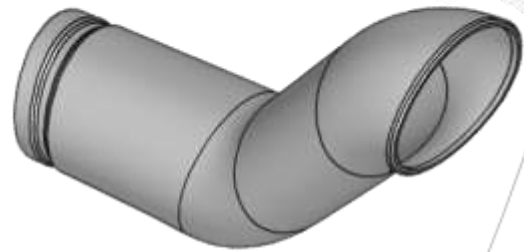
CONCENTRATED CONTINUOUS CUSTOM BENDING

PROTOTYPE

THIS PAGE IS THE PROPERTY OF ALLEGHENY VALVE & COUPLING, INC. ALL INFORMATION HEREIN IS CONFIDENTIAL PROPRIETARY AND NOT TO BE REPRODUCED OR TRANSMITTED IN ANY FORM OR BY ANY MEANS WITHOUT EXPRESS PERMISSION OF ALLEGHENY VALVE & COUPLING, INC.

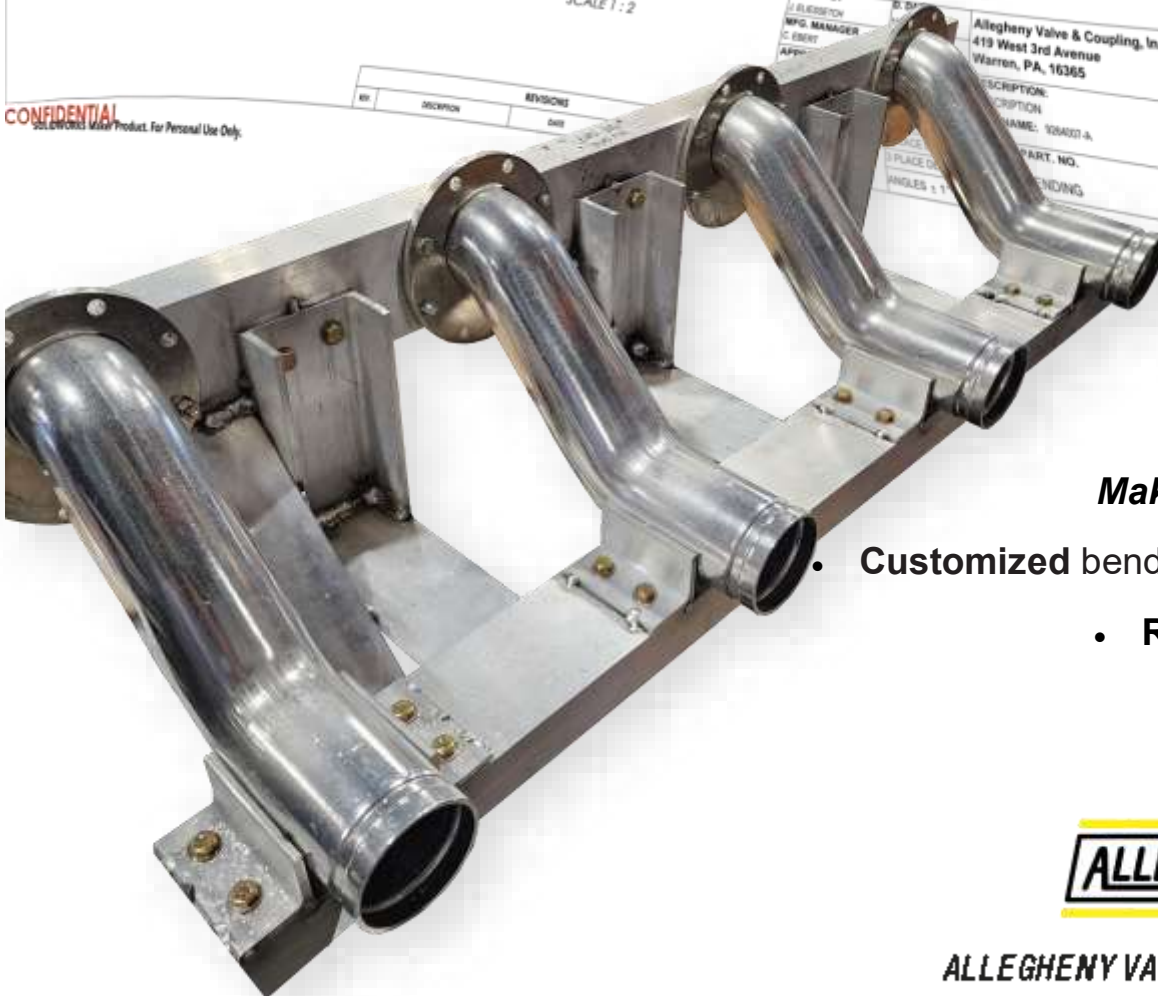


DETAIL A
SCALE 1:2



CONFIDENTIAL
Allegheny Valve & Coupling, Inc. Product. For Personal Use Only.

DRW BY J. BLESSTON	DATE 10/1/10	Allegheny Valve & Coupling, Inc. 419 West 3rd Avenue Warren, PA, 16365	ALLEGHENY
MFG. MANAGER C. EBERT		DESCRIPTION: NAME: 10B400-4	
APPV		PART. NO.	
		PLUGGING	
		REVISION	
		100	
		SHEET 1 OF 1	



Making your work easy!

- Customized bending and assemblages
- Reduced welding time

ALLEGHENY

ALLEGHENY VALVE & COUPLING

GASKETS

for couplings



- **Biolution** gasket in 2", 3" & 4"
- Design for Bio Fuels
- Temperature -40°F to 215°F

- **EverGreen-FKM** gasket in 2", 2.5", 3", 4", 5" & 6"
- Design for higher temperature and wide range of chemicals*
- Temperature -25°F to 400°F



- **White Nitrile** gasket in 3" & 4"
- Food Grade
- Temperature -25°F to 200°F



- Buna (NBR) available in 2.5", 5" & 6"
- Temperature: -30°F to 215°F

ALLEGHENY

ALLEGHENY VALVE & COUPLING

Flat

GASKETS



- **TTMA** flange gaskets in 2", 2.5", 3", 4", 5" & 6"
- Drain pocket gaskets in 3", 4" & 6"
- Available in EverGreen-FKM, Cork & Buna, Non-asbestos, Teflon envelope & Durlon 8500
- Other materials available upon request

Compatibility Chart for Coupling Gaskets*

1: Excellent 2: Satisfactory 3: Poor 4: Not Recommended

Chemical / Medium	BIOLUTION	EverGreen-FKM	Buna (NBR)
Asphalt	2	1	2
Aviation Gasoline	2	1	2
Bio Diesel B2	1	1	2
Bio Diesel B5	1	1	2
Bio Diesel B20	1	1	4
Bio Diesel B100	2	1	4
Crude Oil	1	1	2
Diesel Exhaust Fluid (DEF)	1	1	2
Diesel Oil	1	1	1
E10 (10% Ethanol, 90% Gasoline)	1	1	2
E15 (15% Ethanol, 85% Gasoline)	1	1	3
E20 (20% Ethanol, 80% Gasoline)	2	1	4
E85 (85% Ethanol, 15% Gasoline)	2	1	4
E100 (100% Ethanol)	1	3	2
Gasoline (Lead, Unlead)	1	1	2
Jet Fuel A	1	1	2
Kerosene	1	1	1
Natural Gas	1	1	1
ULSD (Ultra Low Sulfur Diesel)	1	1	1

* Additives in fuel and temperature can affect compatibility

** Visit our website for complete chart



FEMALE ADAPTORS



Low pressure Full and half couplings adaptors

Sizes starting from 0.25" in aluminum, steel and stainless steel

NPT threaded

Working pressure 150 psi



HEAVY DUTY



Heavy duty aluminum SCH 40 elbows, tees & crosses

Belled or beveled ends

Long radius or short radius

Working pressure 300 psi





“We listen, We Act”



419 West 3rd Avenue

Warren, PA, 16365

www.alleghenycoupling.com

sales@alleghenycoupling.com

Phone: +1 814 723 8150

Fax: +1 814 286 3920