



# Servants of our Lord Ministry

P.O. Box 224 Lexington, IL 61753

Phone: (502) 209-8222

Facebook.com/servantsofourlord

Website: [servantsofourlordministry.com](http://servantsofourlordministry.com)

Food Distribution Center: 5860 Main St. Clay City, KY 40312

## May 2024 Newsletter

## Where is my next meal coming from?



According to Feeding America, more than 20% of the population in the Appalachian region of Kentucky regularly experiences food insecurity. This is nearly double the national average of 11%. In 2020, multiple Eastern Kentucky counties had a food insecurity rate over 20%, with Wolfe County having the highest rate in the state at 25.9%.

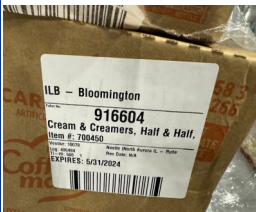
Food insecurity can impact behaviors, which in turn can affect the health status of these communities. Some factors that may contribute to food insecurity include:

- Households having to trade off basic needs like housing or medical expenses.
- Forced to purchase cheaper, but less nutritious foods.
- Rising prices leave less money for food.
- A sudden cut off of COVID-related federal benefits.

Six Kentucky counties have overall food insecurity rates of 24.4 percent or higher and are included in the list of 25 US counties with the highest overall food insecurity rates: Harlan, Bell, Magoffin, Breathitt, Clay and Wolfe. ([feedingky.org](http://feedingky.org))

We provide food to local food pantries serving many of these KY counties and others, so they can help alleviate food insecurity for thousands of families.

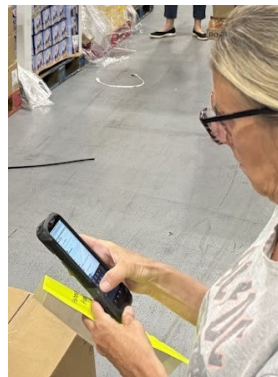
## The Importance of the Inventory Sticker



When you look at a pallet of products that comes from Midwest Food Bank you will see that the case in the lower right corner of the pallet has a number and a bar code. This is a little sticker that goes un-noticed to most people but is something that is very important to Midwest Food Bank and their inventory process. On the manifest

that we receive this number is listed and is tracked from the manufacturer to the distribution center where it is dispensed to the food pantries. The number is unique to each product. When we receive the manifest, we place the description and inventory number on our picklist for our volunteers to pick the specific number of cases of product.

When we do the distribution pre-load in Normal, Illinois we use a hand-held scanner to record what is going to each food pantry. When we are in Kentucky, we record by hand and then have to manually enter in the inventory into the computer and run reports to tie out the distribution of product. These reports are then sent back to Midwest Food Bank for them to record where the product has gone. This in turn is provided to the manufacturer that provided the product to Midwest Food Bank. This process allows for the manufacturer to know where product went and also for Midwest Food Bank to know the extent of how many people they are serving.



## Thank you

God Bless you for all you have done to help the people of Eastern Kentucky! Please pray that God will continue to guide this ministry to supply the food and spiritual needs to all that are physically and spiritually hungry in this impoverished region.

### SCRIPTURE FOCUS

*"Have I not commanded you? Be strong and courageous. Do not be afraid; do not be discouraged, for the Lord your God will be with you wherever you go." Joshua 1:9.*

### OUR MISSION

*To serve our Lord, Jesus Christ, by meeting the spiritual and material needs of the many economically deprived individuals living in the Appalachians and surrounding areas.*

### MINISTRY NEEDS

**Prayer Partners.** Please lift up the food pantries and volunteers that make this all possible, and also the families that receive God's abundance!

Please pray for the ministry leaders, that they may know the will of God.

**Financial Partners.** Please prayerfully consider ways you can help with a monthly donation. 100% of all donations go to providing food to the Eastern Kentucky region.

# May Distribution at Clay City, KY



This month the inmates from Powell County Detention center were unavailable to help with the May distribution in Clay City, KY. We did have a few volunteers that helped move things along and we still were able to get the orders pulled and loaded in a timely fashion. Dana, Ryan,

Rick, Patty, Pete, Bill, Diana, Steve, Sally, and Tommy were the crew to put together 31 food pantry orders.



Sally helps at Midwest Food Bank in Normal, IL from time to time and had someone approach her about a sleeping bag mat that they had made from Walmart bags and wondered if someone at one of the food pantries would want to give it to one of their homeless individuals. Vanceburg's food pantry said they had an individual that they thought would love to have it! She will send me a picture of the recipient and I will post it in a later newsletter. God places angels out there to be blessings to those around us. Thank you for the Walmart sleeping bag mat!



When we do our distributions in Kentucky, they are not always just food. We take down clothes, toys, household items, bikes, and a variety of miscellaneous

items that people donate to us. The pantries that come for their food distribution then have a chance to go through the donated items that we bring down. They are so appreciative of the items that have been donated. Praise be to God that our organization can be such a blessing to those in need!



We also celebrated Steve's 62nd birthday on Tuesday, May 21st, during this distribution.

## A Little Help Goes A Long Way

If you are interested in being a team player locally in our area with Servants of our Lord Ministry, please refer to this link to sign up <https://shorturl.at/dmV15> or scan this QR Code:



Volunteer Signup



Visit us on Facebook

## Ministry Partner

Please keep in mind, this ministry operates solely on individual donations and the help of volunteers.

If you have the time and desire to help with the monthly food distribution, there are a variety of tasks that need volunteers. If interested, please contact us via email at [servantsofourlord@live.com](mailto:servantsofourlord@live.com) or phone (502) 209-8222.

If you would like to help with the Ministry's monthly operational costs, please send your tax-deductible donation in the envelope provided or donate on our website at <https://servantsofourlordministry.com/get-involved> or mail your donation to P.O. Box 224 Lexington, IL 61753.

Thank you and God Bless.



Donate

## Prayer Requests

- Pray for the homeless that are frequenting the food pantries.
- Pray for safe travels for volunteers travelling to Clay City, KY.
- Pray for the food pantries on our waitlist.
- Pray for James Anderson's family (he was a volunteer for our organization that was killed in an accident on a work site).
- Pray for the relief from the recent weather conditions of heat and flooding.