

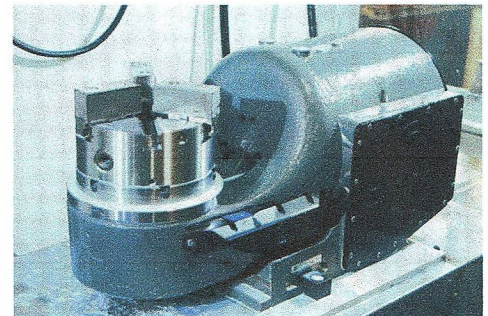
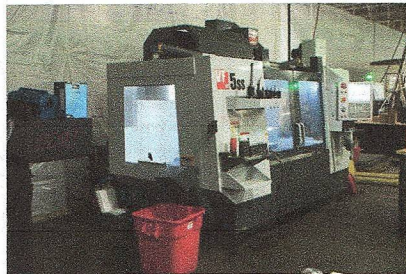
# MACHINES & CAPABILITIES

## VERTICAL MACHINING CENTERS

- HAAS VF5 - TSC, PROBE 25" X 26" X 50"
- HAAS VF2—4 AXIS CAPABLE, TSC, PROBE—30" X 16" X 30"
- HAAS VF4 - 4 AXIS CAPABLE, TSC, PROBE—50" X 20" X 24"
- HAAS VF4-4 AXIS CAPABLE, TSC, PROBE—50" X 20" X 24"
- HAAS VF4SS - 5 AXIS CAPABLE, TSC, PROBE—28" 16" X 16"
- HAAS VF4SS - 5 AXIS CAPABLE, TSC, PROBE—28" 20" X 24"
- HAAS DM1—TSC, PROBE - 20" X 16" X 16"
- HAAS DM2 - 4 AXIS CAPABLE, TSC, PROB—28" X 16" X 16"
- HAAS UMC500 - TSC, PROBE—30" X 16" X 16"



- HAAS - TRT210
- HAAS - TR200Y
- HAAS - HET160SS
- HAAS - HRTA6



## CNC LATHES

- SAMSUNG SL-20 - 9" X 20"
- SAMSUNG SL-20 - 9" X 20"
- DOOSAN LYNX 2100 - 12" X 20"
- DOOSAN LYNX 2100 - 12" X 20"
- DOOSAN LYNX 2100 - 12" X 20"
- DOOSAN LYNX 2100 - 12" X 20"
- HAAS ST30SSY - 14" X 30"



## ACC. FUNCTIONS

- BRIDGEPORT ACURITE
- ACER SURFACE GRINDER 10" X 20"
- CHEVALIER SURFACE GRINDER 20" X 60"
- MV2400S WIRE EDM 16" X 24" X 12"
- SCHMIDT PIN STAMP
- DAKE ROLLINSAW
- AMADA 250 SAW—CUTS UP TP 12" BAR
- MIG/TIG WELDING
- TUMBLE FINISHING
- SAND BLASTING
- HEXAGON 7.10.7 CMM
- 24" X 48" VACUUME TABLE