

July
2019

Summer Worship Times

Green Lake Bible Camp Chapel

Saturday at 6:00pm

Sunday at 8:30am

Faith Lutheran Church

Sunday at 10:00am

Summer Office Hours

Monday-Thursday 8am-4pm

Friday 8am-2pm

Office Closed Fridays

July 5, 12 & 26



Later this month, youth from our Confirmation program along with adult chaperones will be heading out to St Louis for a week-long service trip. While there, they will be the hands and feet of Jesus: serving alongside the people in the community, bonding with one another, and learning all about what it means to cross lines and boundaries in order to love their neighbor.

Attending mission trips or Christian camps adds so much positive faith formation in our younger members, and if you attended anything like this as a teen, I'm sure you would agree. But these opportunities would not be available without you. We are so thankful for your generosity toward our many youth fundraisers throughout the year. From the Lutefisk dinner to the Fat Tuesday pancake feed to the gift basket silent auction, your participation and donations make a difference, and they make these opportunities for our youth possible. So thank you!

Our special offering for the month of July will go toward scholarships for all things camp. We never want financial concerns to be a reason a kid can't participate in camp, and there are lots of ways Faith encourages a camp experience. We are continuing our tradition of hosting our VBS as day camp in July. We are continuing our (growing!) tradition of taking over Camp House in August for Family Camp. And we will be introducing a new tradition of asking our middle school youth to attend Confirmation Camp at least once during the summer. Additionally, there are Faith kids who are attending a variety of the other offerings that Green Lake Lutheran Ministries provides. All of these opportunities are more possible when there is scholarship money and donations to help offset the cost for the families and kids attending.

Please consider giving an additional donation toward our camp offering. And thank you so much for your continued support of our children and youth programs at Faith. I ask one final thing: that you keep the St Louis group in your prayers as they serve the community and one another in God's name, and that they return home with open eyes to the needs within their own community. And thank you once again for your support.

Pastor Seyward Ask



~God gathers us as a family of Faith to nurture, inspire, and share the love of Jesus with all people~

Church Council

Landon Fries - President
Lila Burmeister - Vice President
Mari Kooiman - Secretary
Janet Novak - Treasurer
Tim Renner
Nate Grotelueschen
Louise Stenberg
Chad Haugen
Ben Hoffman
Travis Aufderheide

Main Office:
320.796.2522

Pastors
Todd Nelsen
Seward Ask

Office Administrator
Joy White

Children Youth & Family Ministry Director
James Lucas

Worship & Music Director
Dave Eliason

Interim Property Manager
Jeff Johnson

Wednesday Worship Director
Pat Nelsen

Custodian
Paul Haney

Preschool Director/Teacher
Patsy Cordes

Preschool Teacher
Jean Anderson

Preschool Aide
Katina Dahl

Updates in your family?
Please notify the church office of any recent changes including your preferred contact phone and e-mail to office@faithspicer.org or call Joy White at 796.2522.

Hello from the Property Team



If you have driven by the church you will notice that Tim Renner's roofing crew have been busy replacing the shingles that were damaged in a hail storm. That will give Faith a new roof on those portions. We are still wrestling with the flat roof portions and some leaks but are much closer to a solution having discovered some issues affecting both types of roofs. We will also be moving forward with some parking lot repairs and striping of the lots. We are also setting aside money in the budget to ensure that when the lawnmower needs major service it will not be hard to find the dollars to cover provided it makes it for a couple more years which it should. As you can see the mowing teams are doing a great job keeping the grass in check and the flower teams are likewise keeping everything looking sharp. You may also notice that the driveway to the garden is no longer black dirt. Kelly Morrell at Concrete Products of New London donated a large load of crushed concrete and the hauling. Aaron Renner spent an afternoon with his family skid steer moving and grading the material.

Thanks to all our volunteers and donations. They always help. Till next month...

Jeff Johnson, Interim Property Manager



In May Faith held a gift basket silent auction fundraiser to support youth programs. There were many great baskets donated by members of faith and over \$1,800 was raised.

During the month of March which was food shelf month, we met our first goal of \$2,000/2,000 lbs raised. Because of this, James, our Children Youth and Family Ministries Director dressed up as Han Solo for a Sunday and Wednesday worship. Next year let's try to break \$3,000!


The mission resource team received over 125 cards of intent from congregation members. For meeting this goal, each Mission Resource Team (MRT) member paid a challenge gift of \$250. Thank you to those members that filled out a card and thank you to the Mission Resource Team for your added donations!

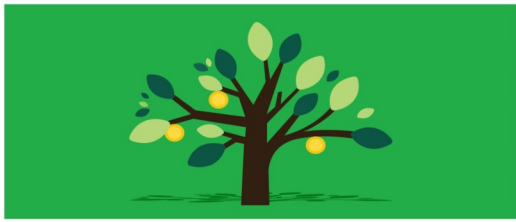
Monthly Numbers

Mission Plan for 2019: \$702,110

Year to date, as of May 31:

Offering Received	= \$267,901.90
Actual Expenses	= \$290,252.36
Excess Expenses	= -\$22,350.46





Simply Giving Cards

If you give to Faith by Simply Giving please take a card and place it in the offering plate.

Do you “Simply Give” to Faith Lutheran?

If you do please grab a simply giving card on your way into worship. These cards can then go into the offering plate letting others know that this is a great and consistent way to give to Faith. The cards are at the camp by the ushers and in a wall pocket just outside the sanctuary doors at Faith.



WE'D LOVE TO CONNECT WITH
YOU
SIMPLY FILL OUT THIS CARD & PLACE IN THE OFFERING PLATE
OR DROP AT THE WELCOME CENTER

Visitor Member Information on joining Faith

YOUR NAME(S)

HOME ADDRESS

PHONE NUMBER

EMAIL ADDRESS

HOW DID YOU HEAR OF US? PRAYER REQUESTS?

COMMENTS

FAITH
LUTHERAN CHURCH

WELCOME TO FAITH

Check out our new Welcome Cards during worship! This is a great way to communicate with us. Whether you are a member, visitor or friend you can let us know about any contact updates, prayer concerns or whatever else you want us to know about through this Welcome Card. Simply fill it out and place in the offering plate. Welcome to Faith! We are so happy you are here with us!

Green Lake Lutheran Ministries Quilt Auction

Friday, July 26

Live Music & Silent Auction
Quilt Review: 5:00pm-8:00pm - \$3
Supper available on site
New in 2019: Quilt Bingo

Saturday, July 27

Quilt Review: 9:00am-10:30am - \$3
Silent Auction closes at 10:30am
Lunch available on site
Auction Begins at 11:30am





~God gathers us as a family of Faith to nurture, inspire, and share the love of Jesus with all people~

Let's Meet!

Property Team

Monday, July 8

6:00pm

Council

Thursday, July 11

6:00pm

Mission Resource Team

Date & Time TBD

Weekly Faith Bible Study

Thursdays @ 9:30am

Weekly Men's Bible Study

Saturdays @ 9:00am

Bi Weekly Men's Bible Study

2nd & 4th Tuesdays @ 6:30am

Our Church Family

The following members have been listed in our Prayer Concerns during the month of June:

Gene Adams
Bruce Loftness
Jaden Hanson
Bill Cook
Elaine Ford
Elaine Iverson
John Scheevel
Linda Sluka
Lori Lind

Wedding

Amanda Johnson & Kelvin Caskey

June 1

Deaths

Lois Osland

June 5

Baptisms

Blair Ryan Johnson

June 23

Son of Ryan and Bri Johnson

Ongoing Opportunities

Guys on the Go

2nd & 4th Tuesdays

6:30am

Morning Men's Bible Study will be held on every 2nd and 4th Tuesday from 6:30am-7:30am at Faith. This study will use the Moravian Daily Texts to lead us into studying the scripture. This is a great on the way to work opportunity to enjoy a light breakfast, coffee, and discussion of how God's Word might shape our day. Please let Pastor Todd know if you would like to participate in this study or just show up! **July dates are: July 9 & 23 in the Fireside Room.**

Hobby Night

Friday, July 12

Join us at 6:30pm. Bring your supplies, a friend, some snacks/beverage and plan to spend some time visiting and crafting! Call Sonya Erickson for more information at 444.1134. Everyone is welcome. See you here at Faith!

Forecaster Submissions Due

Monday, July 15

Tuesday's Table

Tuesday, July 16

6:00pm - 6:30pm

Join us for this free community meal right here at Faith!

Women's Bible Study Circles

Esther Bible Study Circle

Does not meet in July but is welcome to join Rachel Circle.

Rachel Bible Study Circle

Thursday, July 25 - 1:30pm - Place TBD

We use the "Gather Magazine" from Augsburg Publishing for our studies.

Check your weekly worship bulletins for updates or changes of locations.

Need A Good Summer Read?

Come check out our Faith's Fireside / Library Room. We have a great selection of books for you to choose from. Just let the office know you are taking one and bring it back when you are finished. Come in and browse, we even have a few DVD's as well!



~God gathers us as a family of Faith to nurture, inspire, and share the love of Jesus with all people~



PARADE



Help support Faith youth by attending the Spicer 4th of July Parade and buy your popcorn and water from them!

Faith On Tap - Thursday, July 18 - 6:30pm

Adult members of Faith are invited to join us for a lively conversation engaging Faith and Life over a nice cold beer.

We will gather Thursday Evening July 18 at 6:30pm at Goat Ridge Brewery in New London. **If you would like to make use of the Faith Nursery so you can attend Faith on Tap please let us know by Sunday, July 7.**

If you have any questions about Faith on Tap or have a topic you would like to discuss please contact Pastor Todd at toddn@faithspicer.org.



Blood Drive Monday, July 22 1:00pm-7:00pm

Help save a life by donating blood. Call Kathy Munsell at 796-0675 or call 1-800-733-2767 (Red Cross) or go to RedCrossBlood.org enter sponsor code: Spicer, to make your appointment!

Help make Worship Happen

Don't forget we will continue to need worship assistants throughout the summer.

This is a great way to get involved and meet new people. It's not hard and you get a lot out of it. If you have questions on specific duties of a position (greeter, usher etc.) please contact the office. To sign up go to our website: faithspicer.org and use our sign up tab. It will give you different areas in which you can volunteer. If you have questions please contact the church office for help.





~God gathers us as a family of Faith to nurture, inspire, and share the love of Jesus with all people~

Faith Family Camp at Camp House

When: August 8-11

Where: Camp House, Brimson, MN (Near Two Harbors)

Who: Faith Families of any size or age

How much:

- ⇒ Adult: 3 Nights, 8 Meals - \$179.50
- ⇒ Adult: 2 Nights, 5 Meals - \$117
- ⇒ Youth: 3 Nights, 8 Meals - \$126.65
- ⇒ Youth: 2 Nights, 5 Meals - \$81.90
- ⇒ Infants & Preschoolers - FREE!



Intergenerational family camping at Camp House offers families a chance to get away in God’s beautiful north woods and reconnect with one another and God. Camp House can serve as a launching point for families to explore the beautiful North Shore and visit places like Split Rock Light House, Grand Marais, Gooseberry Falls, The Superior Hiking Trail and so much more!

While at Camp House there are many things you can do: swim, fish, paddleboard, canoe and kayak on beautiful George Lake. You can take a trip to the blueberry patch, hunt for agates, and hike the trails on the Camp House property. And of course, there are also camp-fires, small group bible studies, wood fired pizza baking, and time to relax and read a good book.

If you are interested in finding out more about Camp House or any of the other camps of Green Lake Lutheran Ministries, pick up a brochure at the Welcome Center. If you want to sign up to attend Faith Family Camp at Camp House a sign-up sheet is posted on the office bulletin board. An electronic registration is also available on Faith’s Website and Facebook page.

Camp Scholarships

Faith provides Camp Scholarships! We won’t let money be a barrier to enjoying a week at Camp! Visit our website faithspicer.org, email education@faithspicer.org, or visit our Welcome Center to fill out an Application form.



Special Offering Camp Scholarships July 6 & 7

We will receive a special offering for Camp Scholarships. Please use the special offering envelopes that will be provided in your bulletins. These are so very important. We want all kids who want to go to camp to “go to camp”. Please prayerfully consider how you can help. Thank you!



Wednesday Worship “The Feast” Resumes September 11!

Meal is served from 5:15pm-5:50pm.
Worship is 6:00pm-6:30pm.
Education Opportunities run 6:35pm-7:35pm.
Choir Rehearsal is at 7:35pm.



Summer Worship

May 25 & 26 thru August 31 & September 1

Saturday Evenings

6:00pm

Green Lake Bible Camp

Sunday Mornings

8:30am

Green Lake Bible Camp

10:00am

Faith Lutheran Church



Join us out at the Green Lake Bible Camp for Saturday evening worship and one Sunday morning worship service. If you like coming to church in town, we've got a service for you too at 10am here at Faith Lutheran!

Green Lake Bluegrass Band

July 6 & 7

All services

Music Notes

A big thank you to everyone who assisted with the MN All-State Lutheran Choir in June. Thanks to the host families, the meal preparers and servers and all who attended their fine performance. The choir members continue to enjoy visiting Faith Lutheran on their annual tour because of our hospitality and our wonderful acoustics! We look forward to seeing them again.

Thanks for "stepping up" Faith Lutheran Church!

Bluegrass Weekend will be July 6 - 7. One service at 6pm Saturday night at the Green Lake Bible Camp and two services Sunday. The first is 8:30am at Green Lake Bible Camp and the second is 10am at Faith. Come and join in the fun and celebrate the 4th with the band!

Special music continues at the 8:30am camp services with additional music following at coffee time. Come and enjoy some fine local musicians each week!





~God gathers us as a family of Faith to nurture, inspire, and share the love of Jesus with all people~



Praise & Play Preschool

July 2019

Praise + Play Preschool is closed for the summer months but that doesn't mean we aren't working behind the scenes! Miss Patsy and Miss Jean are going through every item in our storage area and labeling them, while putting them in an organized system so when needed during the school year, all is easy to grab as needed. A few items that were geared to children younger than three we donated to the Faith nursery.

Thanks to our interim property manager, Jeff Johnson, our classroom floors were stripped and waxed in a timely fashion so that we can begin putting things in place for the next year. This also is much easier to do when VBS is located at the Bible Camp and not here in some of our classrooms as well.

Praise + Play will host a second Open House on August 6 for anyone in the area still looking for a preschool for the Fall. We will also host our back to school night for all those registered on Thursday, August 15 to drop off their school supplies and meet the staff and check out their classrooms. Our school year will start the day after Labor Day, Tuesday, September 3rd.

Please check out our Facebook page weekly: Praise and Play Preschool. We have so much fun to share with you all!



Days & Tuition/month:

Half days

- 2 days \$112.00
- 3 days \$159.00
- 4 days \$212.00
- 5 days \$260.00

Full days

- 1 day \$125
- 2 days \$250
- 3 days \$375
- 4 days \$480
- 5 days \$585



A few graduating kiddos.

*Friday opening will be dependent upon 10 children registered for that day. If not, we will open M-Th only.

If you are interested in signing your child up please fill out the registration form found on our website: faithspicer.org - go to the education tab - scroll to preschool.

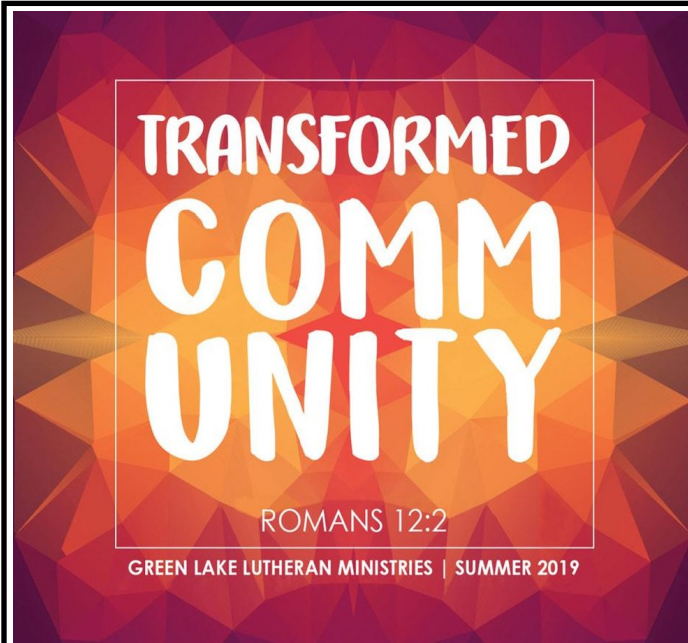
Please include a **non-refundable check for \$35**, payable to: Praise + Play Preschool.

And return to: Praise + Play Preschool, Faith Lutheran Church, 310 Medayto Dr, Spicer, MN 56288





Children, Youth & Family



Looking at Summer Camp?

Experience camp's new theme "Transformed Community" this summer at Green Lake Lutheran Ministries! Camping is an important milestone in faith formation, and you are encouraged to attend this summer! Go to GLLM.org and check out the different camps. There are pamphlets at our Welcome Center as well you can take.

Just a few options are:

Shores of St. Andrew - (Grades 1-7) Half Blast, Andy's Gang, NEW Trailblazers, Fishing Camp, MAD Camp (Music, Arts, Drama)

GLBC - Stargazers, Homestead, M.O.B. (Members of the Body), S.I.T. (Staff In Training), Serve Boldly

Camp House - Confirmation Camp, Servant Adventure (Middle School), Servant Adventure (High School), Fishing Camp.

Faith Lutheran VBS/Day Camp

July 29-August 1

Shores of St. Andrew

If you would like to help with our VBS please contact James



Directions for Day Camp Registration:

- 1) Go to gllm.org
- 2) Go to Register for Summer Camp
- 3) Create a username and password (you won't need to create a new one if you have already registered for a GLLM camp or retreat before)
- 4) Click on "Manage People and Household Information" to fill out family information
- 5) Click on "GLLM Community Day Camps 2019"
- 6) Click "Continue" after reading the instructions
- 7) Select who should be registered for the On Site Day Camp then click "Continue"
- 8) Click on "New London Spicer Community Day Camp" then "Add to Cart"
- 9) If you are a member at Faith Lutheran Church, you can click on "Enter a discount code" and enter ONSITE2019 then click "Apply" - *this process will need to be completed for each person registered*
- 10) Fill out the forms by clicking "Open Forms" - these include Medical, Permissions, and T-Shirt Size and Camper Information
- 11) Choose a Payment Option - *if you would like to apply for a camper or church scholarship, select "Pay later" at this time*
- 12) Review all information and click "Submit Application"
- 13) Expect a confirmation email from GLLM

If you need help registering, contact James to get your child signed up!

Children, Youth & Family Ministries Director - James Lucas: education@faithspicer.org or 320.796.2522.



~God gathers us as a family of Faith to nurture, inspire, and share the love of Jesus with all people~

Youth Accounts

You might not know this, but each student here at Faith has their very own Youth Account, where we keep track of how much money youth earn whenever they work a fundraising event! This year students raised a lot of money working the Lutefisk Dinner, and the FAT Tuesday Meal!



NEVER TOO EARLY TO START!

Kids of any age can work fundraising events! We use these funds to help pay for Summer Camp, Mission Trips, and Retreats throughout the year! Pre-K to 4th Grade we ask that a parent work with their student!



Looking to Lutefisk!

The Lutefisk and Meatball Dinner is hands down our biggest and most successful fundraiser, and we would love your help! As we look ahead towards the Fall, we invite you to join the Lutefisk team that makes this great fundraiser possible! Do you have talents that you believe would benefit this huge fundraiser? Want to join one of our Lutefisk teams? Please contact our CYF Director James at education@faithspicer.org.

Confirmation



Small Group Leader Meeting

Wednesday, August 21

We will model what Small Group discussions will look like for the following Confirmation year. If you are interested in being a Small Group Leader, please contact the CYF Director James at 796.2522 or education@faithspicer.org.



July 14-20, youth from our Confirmation program along with adult chaperones will be heading out to St Louis for a week-long service trip. While there, they will be the hands and feet of Jesus: serving alongside the people in the community, bonding with one another, and learning all about what it means to cross lines and boundaries in order to love their neighbor.



Faith will be hosting Family Promise again the week of July 21-28. Summers are busy for everyone, so we will need you to volunteer! This a mission opportunity to help families that are experiencing homelessness.

For those who volunteered the last time, I'm pleased to say that the family of three moved into housing mid-June, and the single woman will move into housing at the beginning of July. FPKC has also hired a former guest to work at the Day Center on Friday's. Welcome Cruz!

Some of our volunteers attended a training on boundaries in May. The next training will focus on consistency among the congregations and Day Center in the rules we expect our guests to follow. Consistency will help our guests, volunteers, and Day Center staff.

Thank you for your continued support of our Family Promise Ministry!
Lynn Dwyer



Community Garden

Most of the gardens have been planted! There are a couple plots still available for just \$25. Please feel free to come check them out. Just remember not to disturb them.



The Faith Community Garden is open to anyone who would like to garden. You do not need to be a member of Faith. The garden is watered on a regular basis. If you have extra vegetables you would like to share with others we will have our garden cart out under the overhang at Faith later this summer.

If you have questions about our community garden or would like to sign up for a plot please call Lynda at 320-796-6502.

Got Shoes?



Faith now has a shoe collection box. The Spicer Sunrise Lions are collecting shoes for distribution to needy people around the world. The Lions will accept any footwear you'd care to donate: New shoes, old shoes, adult shoes, children's shoes, boots (and yes, even old ski boots and high heels!). Shoes that cannot be used for footwear are ground up and used as roadbed material in third world countries. We'll take 'em all!



~God gathers us as a family of Faith to nurture, inspire, and share the love of Jesus with all people~



School Kits

Let's help kids around the world get the supplies they need for school. Help fill backpacks with school materials to be distributed through Lutheran World Relief to countries around the world. Kits will be available soon at Faith and at Green Lake Bible Camp. Please pick up, sign out and return by date listed on card attached to school bag.

LUTHERAN WORLD RELIEF NEEDS SCHOOL KITS!



Requests for School Kits are coming faster than we can keep up. Take advantage of summer school supply sales and help ensure that we can say YES to every student who needs a School Kit! Go to lwr.org/schoolkits to get started.

Supplies needed for each kit are:

- 4 - 70 sheet notebooks of wide/college-ruled paper (no loose leaf)
- 1 - 30cm ruler or ruler with cm on one side and inches on the other
- 1 - pencil sharpener
- 1 - blunt scissors (safety scissors)
- 5 - unsharpened #2 pencils with erasers
- 5 - ballpoint pens (no gel ink) (secure pencils/pens with rubber band)
- 1 - box of 16 or 24 crayons
- 1 - 2 1/2 inch long eraser

Thank You

Faith Lutheran served more than one dinner in June. We started with Tuesday's Table on June 18 followed by Minnesota All State Lutheran Choir on June 20. A very special thank you to all the volunteers who donated their time and prepared food for each meal we served.

At Faith we are very blessed to have so many of you who respond to a phone call when we need casseroles, salads, dessert, your help setting tables, clearing tables, work in the dish room, serving the meal, take laundry home and much more. Our guests who attend Tuesday's Table tell us each month how much they enjoy coming to Faith. We do like to hear that.

Our volunteer list of opportunities is listed on the Opportunity to Serve card you receive each month in the church bulletin. Check it out! Thanks everyone. You do a great job when you get a call!

Thank you for your generous donation of New2You gift cards to Safe Avenues. We provide emergency shelter, safety planning, support groups among many other services. Thank you for your continued support.

Thank you to all the people from Faith who helped us move to our new home in New London. We are so grateful to be living in the community in which we both work and serve. You are all the best.

Gratefully, Pastor Todd and Pat



Dear Friends,

Thank you so very much for the generous donation of shampoos and conditioners for our CARE Party.

It is so wonderful that we can "come" together to provide for those less fortunate in our community.

Please don't hesitate to call us to refer someone to receive products.

Thanks again!

Karen
Hope Presbyterian



Rib Fest Update:

The 6th Annual "Smokin' for The Link" Rib Fest was an amazing day of community and the culmination of hundreds of hours of volunteer time and effort to help children, families and seniors in need. Even though it was a great day, as many of you may have heard \$9,200 went missing from the event. The incident was reported to the Kandiyohi County Sheriff's Department as a theft.



Thank you to everyone that has been reaching out with information and support.

As we continue to look for answers and leads, here are ways you can help:

- ⇒ Submit photos or video through Facebook messenger to The Link. We are looking for photos/video from a time frame of 4pm - 5pm.
- ⇒ If you saw something suspicious at the event, please contact the Kandiyohi County Sheriff's Department at 320.214.6700, x 3341.
- ⇒ If you paid for your ticket at the event by check, please watch your checking account for fraudulent activity.
- ⇒ Pray that the funds are recovered as the needs of our neighbors continue.

FAITH IN ACTION!

Upon hearing of the theft of proceeds from the Rib Fest Smokin' for the LINK Fundraiser, Evangeline Dalton (8yrs old) and her cousin Layna Carlson (9yrs old) decided to hold a craft sale to help support the LINK. Evangeline and Layna made the crafts and sold them as Cousins and Crafts to raise funds for the LINK. They ended up making \$900! God bless the entrepreneurial spirit and generosity of these fine young ladies.



Tuesday's Table

July Schedule

Serving from 6:00-6:30pm

July 2: No Tuesday's Table

July 9: Evangelical Covenant Church

July 16: Faith Lutheran Church

July 23: Peace Lutheran Church

July 30: Living Word

Household Exchange & Food Pantry Hours

Tuesday: 9am-3pm

Thursday: 9am-3pm

Wednesday: 2pm - 5pm

Revive + Redeem

Boutique | Thrift Hours

Tuesday: 10am-3pm

Thursday: 10am-3pm

Saturday: 9am-1pm



Stock the Pantry

Key food items: Milk, eggs, bread, cereal, canned fruits & vegetables, noodles and sauce, peanut butter, jelly and tuna. Please contact Chasity at 354.5555 to make a donation of food.

The Link

P.O. Box 823

New London, MN 56273

Telephone: 320.354.5555 or 320.354.5465

Physical address: 206 Main St. N, New London

Rhonda Otteson

director@youarethelink.org

Chasity Ommodt

outreach@youarethelink.org

Shawna Roemeling

coordinator@youarethelink.org

July 2019 Bible Study

Book of Esther--Chapters 4-8
"For just such a time as this"
Helping our voices bloom!

No Quilting during summer months.

No Esther Bible Study Circle

WELCA Fun Day

July 10 - 11:30am The Oaks in Willmar
(golf range dining room)

*Offering goes to a mission of our choice.

*Lunch will be on our own.

Rachel Bible Study

July 25 @ 1:30pm Place TBD

*Esther Bible Study is invited to join us.

Remember: August is school backpack month.
Watch for sales.

Everyone is invited to join us in our Bible Studies and mission projects. For more information contact Nona Oie 796-5554.

Quilting Needs:

If you are cleaning this summer and come across some material and thread that you had forgotten about--the quilters have just the place and use for it! Drop off at church during business hours.



Did you know that we collect Teals Market receipts? We add them up, turn them in and then receive 1% of the total! All the money we receive goes to help pay for our free community meal called Tuesday's Table. Please continue to bring us your receipts!

July Scriptures

July 7 - Isaiah 66:10-14, Galatians 6:1-16, Luke 10:1-11, 16-20

July 14 - Deuteronomy 30:9-14, Colossians 1:1-14, Luke 10:25-37

July 21 - Genesis 18:1-10, Colossians 1:15-28, Luke 10:38-42

July 28 - Genesis 18:20-32, Colossians 2:6-19, Luke 11:1-13

- 1) Gabriel Heglie, Robbie Revermann, Emma Shea
- 2) Brock Buffington, Andrew Nieland, Ian Rauk, Luann Rudningen, Leah Rueckert, Mike Schammel, Lesley Schmid
- 3) Karen Berg, Karen Fick, David Kennedy, Gregg Teisinger
- 4) Cayson Collins, Mary Ann Gerberding, Gus Hoffman, Tom Lange, Jonathan Martinka, Ron Minke, Liam Olson
- 5) Jon Pederson, Paul Pederson
- 6) Leander Lucas
- 7) Gary Bridge, Joyce Finstrom Jensen, Seth Rooney, Shelly Vilven
- 8) Doug Gronli, Susan Westre, Nicholas McKenzie, Amber Nelson, Jacob Noeldner, Leah Schmid
- 9) Sandra George, Reese Johnson, Derick Rossell
- 10) Michelle Hardebeck, Melissa Louwagie, Charlotte Lund, Ada Prentice, Jady Proehl, Pam Ruter
- 11) Ross Henjum, Michael Johnson, Linda Larson
- 12) Dennis Fries, Tyler Halvorson, Marnie Osmond, Mandy Toutges
- 13) Brian Eichhorst, Nathan Field, Lucas Finstrom, Odin Knudsen, Matthew Lorensen
- 14) Austin Bengtson, Evalyn Driggs, Kris Grinager, Carson Wallner, Silas Wharton
- 15) Erika Boone, Julie Kastner, Andrew McDonnell
- 16) Ruben Hogle, Mason Manselle, Vicki Mickelson, Amanda Olson, Kathy Schmiedeker, Megan Skoglund, Jolynn Wentzel
- 17) Ron Engebretson, Kylie Halvorson, Traci Haugen, Elliott Idstrom, Caleb Johnson, Doris Ommodt
- 18) Alec Bridge, Ray Oie, Andy Swanson
- 19) Doris Rossell
- 20) Dean Lovold, Dalton Ninow, Kay Rauk, Kalle Sandven
- 21) Kathy Chase, Joshua Eliason, Marge Erickson, Carmen Halvorson
- 22) Lauren Hunt, Elaine Meyer
- 23) Eli Carlson, Iris Johnson, Jean Ruter
- 24) Spencer Lund, Clifford Wig
- 25) Megan Strohbeen
- 26) Joanne Marquardt, Robert Robinson, Preston Thompson
- 27) Adrianna Bratsch, Mark Gatzemeyer, Adam Lere, Kylee Nash, Jesse Nordgren
- 28) Asher Christensen, Kari Haug, Brice Hedrick, Claire McComb, Caylor Moreno, Thomas Willen
- 29) Irma Arnesen, Isla Finstrom, Conner Harlow, Sylvia Johanneck
- 30) Terry Ahlquist, Carla Miller, Jaden Swenson
- 31) Jack Klaers, Lanet Sammons, Ellary Sweep



SUNDAY	MONDAY	TUESDAY	WEDNESDAY	THURSDAY	FRIDAY	SATURDAY
	1	2	3	4 Office Closed 10am Parade 	5 Office Closed	6 9am Bible Study 6pm Worship @ GLBC *Special offering Camp Scholarships
7 8:30am Worship @ GLBC 10am Worship @ Faith *Special offering Camp Scholarships	8 10:30am Staff 6pm Property Team Meeting 7pm Caregiver Meeting	9 6:30am Guys on the Go Bible Study 6pm-6:30pm Tuesday's Table @ Evangelical Covenant Church	10	11 9:30am Bible Study 6pm Council	12 Office Closed 6:30pm Hobby Night	13 9am Bible Study 6pm Worship @ GLBC
14 8:30am Worship @ GLBC 10am Worship @ Faith	15 10:30am Staff 4:30pm Link Board Meeting	16 6pm-6:30pm Tuesday's Table @ Faith	17	18 9:30am Bible Study 6:30pm Faith on Tap at Goat Ridge Brewery	19	20 9am Bible Study 6pm Worship @ GLBC
21 8:30am Worship @ GLBC 10am Worship @ Faith Family Promise Week Begins	22 10:30am Staff 1pm-7pm Blood Drive	23 6:30am Guys on the Go Bible Study 6pm-6:30pm Tuesday's Table @ Peace Lutheran	24	25 9:30am Bible Study	26 Office Closed	27 9am Bible Study 10am Private Shower 6pm Worship @ GLBC
28 8:30am Worship @ GLBC 10:00am Worship @ Faith	29 9am-3pm Day Camp @ Shores 10:30am Staff	30 9am-3pm Day Camp @ Shores 6pm-6:30pm Tuesday's Table @ Living Word	31 9am-3pm Day Camp @ Shores			

FAITH LUTHERAN CHURCH
310 Medayto Drive
Spicer, MN 56288

ADDRESS SERVICE
REQUESTED

NON-PROFIT ORGANIZATION
U.S. POSTAGE PERMIT #8
SPICER, MN 56288



PHONE
320.796.2522

EMAIL: office@faithspicer.org
WEBSITE: www.faithspicer.org

Worship Times

**Labor Day — Memorial Day
At Faith Lutheran Church**
Wednesdays 6:00pm-6:30pm
Sunday at 8:30am & 10:35am
Education Hour at 9:30am

**Memorial Day — Labor Day
At Green Lake Bible Camp Chapel**
Saturday at 6:00pm
Sunday at 8:30am
At Faith — Sunday at 10:00am

Green Lake Chapel Door Update

Last Summer we invited members of Faith to make a special offering for new doors for the Stave Chapel at Green Lake Lutheran Ministries. Faith Raised \$1,822.00 to help support this effort, but there is still a long way to go before this project can be completed. In order to match the historic and architectural design of the Stave Chapel, the doors need to be custom made at a substantial cost. The funding goal for the door project has not yet been met. If you would like to make an additional gift for the Stave Chapel Doors, please make a check out to Faith and mark in the memo line, Chapel Doors.

You may have noticed that the camp is currently working on some additional projects to beautify the chapel area, including: exterior siding and trim repair and replacement, steeple repairs, sidewalk repairs, and landscape improvements. Your generosity to GLLM also helps to make these improvements possible. Thank you for your continued generosity.