



### March Food Shelf Challenge

Our goal is to raise \$4,000/4,000 pounds for the Link and the Willmar Area Food Shelf. We will start collecting donations on March 1 and get our final count on March 31. This year Faith's Children, Youth and Family Ministries Director James Lucas has agreed to a tiered challenge. This is a Star Wars Based Challenge.

If we reach \$2,000/2,000 lbs James will dress up on a Sunday and Wednesday as Han Solo. If we reach \$3,000/3,000 lbs James will dress up as Yoda! If we reach \$4,000/4,000lbs James will dress up as Princess Leia.

Let's all work together to help our neighbors during the March Food Shelf Challenge!

### Coloring Through the Psalms

Two years ago our congregation focused on the Stations of the Cross during the season of Lent. One aspect of this was to have large coloring sheets representing each of the Stations out in our Gathering Area, encouraging young and old members alike to sit down for a few minutes and color. I still hear people talk about how fun this project was, and how it brought people together.



Since then, Pastor Todd and I have been wanting to do a similar project, and after some brainstorming, as well as attending a meaningful continuing education conference together, we came up with a new idea: a Lenten devotional coloring book. We had already decided to focus on the assigned Psalms for our sermons each Sunday and Wednesday in Lent. Our congregation is blessed to have several talented artists, so we gathered four of them and asked them to create artwork based on these Psalms, with the intention of it being colored, that we would then pair with devotions written by the two of us. Our amazing artists came through, and the results are beautiful. I am so excited for you all to see and enjoy and use the finished product!

In addition to each member of the congregation receiving a Lenten Devotional Coloring Book, we plan to have enlarged versions of the coloring pages set out in the Gathering Area to once again invite any and all to spend a few minutes coloring together and getting to know one another. It is our hope that both the personal coloring devotional as well as the communal prints will give you the opportunity to delve deeper into your faith.

I am so very grateful to Kristin Allen, Sharon Schuetze, Sherri Klaers, and Naomi Noeldner for meeting with us, agreeing to help with this project, and creating beautiful, inspiring works of art based on our Lenten Psalms. Thanks be to God!

Pastor Seyward



~God gathers us as a family of Faith to nurture, inspire, and share the love of Jesus with all people~

**Church Council**

- Landon Fries - President
- Lila Burmeister - Vice President
- Mari Kooiman - Secretary
- Janet Novak - Treasurer
- Tim Renner
- Nate Grotelueschen
- Louise Stenberg
- Chad Haugen
- Ben Hoffman
- Travis Aufderheide

**Main Office:**  
320.796.2522

**Pastors**

- Todd Nelsen
- Seward Ask

**Office Administrator**

Joy White

**Children Youth & Family Ministry**

**Director**

James Lucas

**Worship & Music Director**

Dave Eliason

**Interim Property Manager**

Jeff Johnson

**Wednesday Worship Director**

Pat Nelsen

**Custodian**

Paul Haney

**Preschool Director/Teacher**

Patsy Cordes

**Preschool Teacher**

Jean Anderson

**Preschool Aide**

Katina Dahl

**Regular Office Hours**

Monday - Friday  
8:00am-4:00pm

**Office Closed**

Friday, March 8



Four new members were welcomed to the church council in February. Travis Aufderheide, Ben Hoffman and Louise Stenberg were elected to three year terms at the annual meeting in January, and Chad Haugen was elected to a one year term to complete the one vacated by Kelly McComb. Election of officers was held with Landon Fries taking the office of President, Lila Burmeister, Vice-President and Mari Kooiman, Secretary.

To date, we have received 14 new Simply Giving sign-ups. If 20 are received, we will receive a \$2,500 donation; 30 received we will receive a \$5,000 donation from one of our members. Simply Giving is an easy way to make your contribution to Faith. You can sign up online, or stop in the church office to pick up an enrollment form. We have received 93 Statement of Intent cards, with a promise by the Mission Resource Team to contribute \$2500 if 125 cards are returned. If you have not yet returned your card, please do so. If you've misplaced your card, they are available at the Welcome Center or from an usher on Sunday morning. The Mission Resource Team is looking for at least one additional person to serve with them. We invite you to consider this opportunity. Please talk to Landon Fries, Mari Kooiman or Pastor Todd if you have questions or would like to volunteer.



**SUNDAY  
MARCH 10**

**TURN YOUR  
CLOCKS AHEAD!  
IT'S ALMOST  
SPRING!**

**Ink  
Cartridges**



Faith is no longer accepting used ink cartridges. If you need to recycle your ink cartridges please bring them to Office Max in Willmar. They will accept them at no charge. Thank you!

**Monthly Numbers**

**Mission Plan for 2019: \$702,110**

Year to date, as of January 31:

Offering Received	= \$47,122.64
Actual Expenses	= -\$52,463.92
<b>Excess Expenses</b>	<b>= -\$12,123.01</b>





# The Feast

## Wednesdays at Faith

### Meal

5:15pm-5:50pm

### Worship

6:00pm-6:30pm

### Education/Service Project

6:35pm-7:35pm

### Faith After Hours

7:35pm

Choir Rehearsal

## Education/Service Project (6:35pm-7:35pm)

March 6 - Ash Wednesday  
No Classes

March 13

- ⇒ Seeds (pre K - 3rd Gr)
- ⇒ Sprouts (4th Gr - 6th Gr)
- ⇒ Adult Education - "Unglued"

March 20

- ⇒ Seeds (pre K - 3rd Gr)
- ⇒ Sprouts (4th Gr - 6th Gr)
- ⇒ Adult Education - "Unglued"

March 27

- ⇒ Seeds (pre K - 3rd Gr)
- ⇒ Sprouts (4th Gr - 6th Gr)
- ⇒ Adult Education - "Unglued"

## March Menu

- March 6 - Turkey, Ham & Cheese on bun w/soup
- March 13 - Build a burrito w/white rice & fixings
- March 20 - BBQ Pork on a bun w/au gratin potato soup
- March 27 - Tater tot Hotdish w/Caesar salad

## March & April

### Adult Education - "Unglued"

In this six-session, small group Bible study DVD, Lysa Terkeurst teaches participants how to process emotions and resolve conflicts in ways that lead to a much more peaceful life.

What do we often do with our raw emotions? We stuff, we explode, or react somewhere in between. Is it really possible to make emotions work for us instead of against us? Her answer is yes, and in her usual inspiring and practical way, Lysa shows you how.

Filled with gut-honest personal examples and Biblical teaching, Unglued will equip you to know with confidence how to

- ⇒ Resolve conflict in your important relationships
- ⇒ Find peace in your most difficult relationships as you learn to be honest but kind when offended
- ⇒ Identify what type of reactor you are and how to significantly improve your communication
- ⇒ Respond with no regrets by managing your tendencies to stuff, explode or react somewhere in between
- ⇒ And how to gain a deep sense of calm by responding to situations out of your control without acting out of control

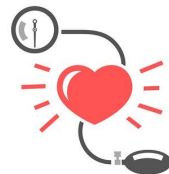
The Unglued Participant Guide can be purchased from amazon.com and typically runs under \$10.

**Dates of class: March 13, 20, 27, April 3, 10 & 27.**

## Confirmation Students & Mentors

All confirmation students and their mentors will be meeting during the Wednesday night meal from 5:15pm -5:50pm beginning March 13 through April 10. There will be no other confirmation classes during Lent.

## Don't forget!



The first Sunday of each month our Parish Nurse is here to do free blood pressure checks. Head to office 114 on the east side of the gathering area to have yours checked.



~God gathers us as a family of Faith to nurture, inspire, and share the love of Jesus with all people~

## Let's Meet!

### **Mission Resource Team**

Tuesday, March 12  
6:00pm

### **Council**

Thursday, March 14  
6:00pm

### **Weekly Faith Bible Study**

Thursdays @ 9:30am

### **Weekly Men's Bible Study**

Saturdays @ 9:00am

### **Bi Weekly Men's Bible Study**

2nd & 4th Tuesdays @ 6:30am

### **Our Church Family**

The following members have been listed in our Prayer Concerns during the month of February:

Ron Nelson  
Jill Rohman  
Eleanor Prentice  
Joann Skaalrud  
Gary Lagerstedt

### **Baptisms**

Isla Ann Quisberg  
February 10

### **Welcome New Members**

Wade & Melissa Quisberg  
-Ava Baker & Isla

Christian Korsmo & Samantha Skaggs  
-David & Elliot

Craig Nelson & Megan Hjelle  
-Abigail Hjelle

### **Dave Eliason Retirement Party!** **March 9 - 2:00pm**

Dave Eliason retired at the end of January, after serving at Green Lake Lutheran Ministries for 40 years! Join us at the Chrysalis House at Green Lake Bible Camp. All are welcome!

## Ongoing Opportunities

### **The Amazing Collection Bible Study**

Mondays at 8:15am

Just two Mondays left and we will have finished the Amazing Collection Bible Study! If you would like to get in on the last two studies you are more than welcome! We begin at 8:15am in the Fireside room at Faith on Monday mornings, March 4 & 11.

### **Hobby Night**

Friday, March 8

Join us at 6:30pm. Bring your supplies, a friend, some snacks/beverage and plan to spend some time visiting and crafting! Call Sonya Erickson for more information at 444.1134. Everyone is welcome. See you here at Faith!

### **Guys on the Go**

2nd & 4th Tuesdays  
6:30am

**Morning Men's Bible Study** will be held on every 2<sup>nd</sup> and 4<sup>th</sup> Tuesday from 6:30am-7:30am at Faith. This study will use the Moravian Daily Texts to lead us into studying the scripture. This is a great on the way to work opportunity to enjoy a light breakfast, coffee, and discussion of how God's Word might shape our day. Please let Pastor Todd know if you would like to participate in this study or just show up!

**March 12 & 26 in the Fireside Room.**

### **Forecaster Submissions Due**

Friday, March 15

### **Tuesday's Table**

Tuesday, March 19  
6:00pm - 6:30pm

Join us for this free community meal right here at Faith!

### **Women's Bible Study Circles**

Esther Bible Study Circle  
Wednesday, March 20 @ 9:30am

Rachel Bible Study Circle  
Thursday, March 28 @ 1:30pm

We use the "Gather Magazine" from Augsburg Publishing for our studies. Check your weekly worship bulletins for updates or changes of locations. All women of Faith Lutheran Church are invited to join one of the Bible Study Circles. For more info contact Nona Oie at 796-5554.





**Essential Oils 101**  
Saturday, March 2  
1:00pm-4:00pm  
Class Size is Limited  
**Cost \$10**

Will be making 2 items to take home.  
Payment at time of sign up will secure your spot. List is at the Welcome Center.

**"Visiting the Grieving"  
Presentation  
Wednesday, March 6**



The Faith Visitation Ministry team is hosting a presentation on grief. Evy Hatjistilianos, the Hospice Volunteer Coordinator at Rice Memorial Hospital, will be leading a training on understanding and responding to grief. This presentation will take place at Faith on Wednesday, March 6 from 10am-12pm. If you are interested in attending, please call the church office or email Pastor Seyward to RSVP ([seywarda@faithspicer.org](mailto:seywarda@faithspicer.org)).



**FAT Tuesday  
Pancake Dinner**

**Tuesday, March 5  
5:00-7:00pm**

Bring an empty belly to Faith's Fat Tuesday Pancake Supper for some delicious pancakes and sausage! This supper is a great chance for you and your family to help our youth fund-raise for fun church events and summer trips!

Youth from 7th-12th grade sign up to work at the FAT Tuesday Pancake Supper. Money you earn is added to your youth account and can pay for Camp, Youth Gatherings, Summer trips and other events!

**Advanced tickets can be purchased  
at the Welcome Center.**

**Adults: \$10**

**Children: \$7**

**Kids (3 and under): Eat Free**



~God gathers us as a family of Faith to nurture, inspire, and share the love of Jesus with all people~

## National Quilting Day

March 16, 2019

Lutheran World Relief wants to thank all quilters, supporters of quilters, packers, drivers, and cheerleaders of quilters! Your faithfulness in sharing your gifts and time help weave the Holy Spirit into each and every quilt sent around the world.

For nearly 70 years, compassionate people just like you have put their faith into action and made quilts for people in need around the world. And not just a few quilts--thousands of quilts every year. These gifts make life brighter, softer, and a bit more comfortable for our neighbors around the world struggling with displacement, chronic poverty, illness, natural disaster or conflict.

Our Faith Lutheran Church Quilters not only make and send quilts to the Lutheran World Relief but also to our own local needs. Quilts are delivered to Willmar Hospice, Safe Avenues, Salvation Army, Green Lake Bible Camp, Eagles Healing Nest (Sauk Centre), Woodland Centers, Red Cross (St. Cloud), and Habitat for Humanity.

We invite all members to join us for quilting the 2nd & 4th Monday & Tuesday of each month from 9am-3pm.

**No experience necessary!** For more information please contact Nona Oie 796-5554.



## Faith On Tap

Thursday, March 21

6:30pm

Adult members of Faith are invited to join us for a lively conversation engaging Faith and Life over a nice cold beer. **We will gather Thursday Evening March 21 at 6:30pm at Goat Ridge Brewery in New London.** If you have any questions about Faith on Tap or have a topic you would like to discuss please contact Pastor Todd at [toddn@faithspicer.org](mailto:toddn@faithspicer.org).

## Faith Family Camp at Camp House

When: August 8-11

Where: Camp House, Brimson, MN (Near Two Harbors)

Who: Faith Families of any size or age

How much:

- ⇒ Adult: 3 Nights, 8 Meals - \$179.50
- ⇒ Adult: 2 Nights, 5 Meals - \$117
- ⇒ Youth: 3 Nights, 8 Meals - \$126.65
- ⇒ Youth: 2 Nights, 5 Meals - \$81.90
- ⇒ Infants & Preschoolers - FREE!



Intergenerational family camping at Camp House offers families a chance to get away in God's beautiful north woods and reconnect with one another and God. Camp House can serve as a launching point for families to explore the beautiful North Shore and visit places like Split Rock Light House, Grand Marais, Gooseberry Falls, The Superior Hiking Trail and so much more! While at Camp House there are many things you can do, swim, fish, paddleboard, canoe and kayak on beautiful George Lake. Take a trip to the blueberry patch, hunt for agates, and hike the trails on the Camp House property. And of course, there are also camp-fires, small group bible studies, wood fired pizza baking, and time to relax and read a good book. If you are interested in finding out more about Camp House or any of the other camps of Green Lake Lutheran Ministries, pick up a brochure at the Welcome Center. If you want to sign up to attend Faith Family Camp at Camp House a sign-up sheet is posted on the office bulletin board. An electronic registration is also available on Faith's Website and Facebook page.

A BIG thank you to all who donated blood, who donated food, the volunteer workers and Faith Church for hosting this event. The blood drive on January 29th would not have been a success without all of you. A total of 55 units of blood was collected. We had four first time donors, and only 2 deferrals.

Thank you to all.

Coordinators Kathy Munsell and Jennifer Davenport





# Lent IS A TIME TO GROW CLOSER TO JESUS

**ASH Wednesday**  
**March 6**  
**6:00pm**

**Lent Worship**  
**Wednesdays at 6:00pm**

**Sundays**  
**8:30am & 10:35am**

## Music Notes

Cantata! Lent begins in March this year and Ash Wednesday (March 6) is when we'll begin rehearsing this year's cantata entitled "Journey to Hope".

As it was last year, anyone who would like to participate is welcome - no choir membership or experience necessary! If you like to sing and would like to help perform "Journey to Hope" on Palm Sunday, you are encouraged and welcome to join in. Rehearsals will be on Wednesday nights at 6:35pm (or immediately following the Feast) until Palm Sunday.

**Special Note! Don't miss Bluegrass Worship - Sunday, March 3.**

### Choir Rehearsals

Wednesdays  
7:35pm  
Join us for rehearsals if you're interested in singing!

### Choir Performance Dates

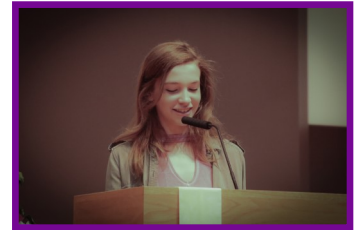
Wednesday, March 6 - 6:00pm  
Sunday, March 17 & 31 - 8:30am & 10:35am

### March Scriptures

March 3 ~ Exodus 34:29-35, 2 Corinthians 3:12-4:2, Luke 9:28-43  
March 10 ~ Deuteronomy 26:1-11, Romans, 10:8-13, Luke 4:1-13  
March 17 ~ Genesis 15:1-12, 17-18, Philippians 3:17-4:1, Luke 13:31-35  
March 24 ~ Isaiah 55:1-9, 1 Corinthians 10:1-13, Luke 13:1-9  
March 31 ~ Joshua 5:9-12, 2 Corinthians 5:16-21, Luke 15:1-3, 11-32

## Volunteer

### Help with Worship...



Usher

Greeter

Reader

Communion Assistant

Audio Visual

Welcome Center

Coffee Server

Call the church office to sign up at 796.2522.

**We need YOU!**



~God gathers us as a family of Faith to nurture, inspire, and share the love of Jesus with all people~



## Praise & Play Preschool March 2019

Praise and Play Preschool had a month of wild weather the end of January and February and are hoping not to have any more school cancellations. One positive position we have at Praise+Play Preschool is that our children who come less than five days a week may make up missed days on any day they are not scheduled for. This makes it easy to get the missed days made up. This month has also been a month of many days staying inside due to subzero temps so we make use of our bikes being ridden in our large motor room and build a few obstacle courses and such.

We continue our Bible stories of Jesus as he walked this Earth. Both Pastors and James do such a great job at Chapel.

March is our month to study a few very special children's authors. We start out the first week with Dr. Seuss as it is his birthday. We love the silly rhyming and crazy characters in his stories. Do you like green eggs and ham? We then go onto Eric Carle and his beautiful colorful illustrated books. Our dramatic play area is set up as a library.

We also had our first state inspection by licensing since 2015. It went very well and our licenser complemented us on the center's appearance, it's cleanliness, it's organization and the staff programing and teaching. They are hoping to get caught up and start inspecting yearly next year.

Miss Patsy had the opportunity to attend the ELEA national conference in Dallas, Texas recently. This was the final training of a yearlong leadership program she was enrolled in. ELEA is part of the ELCA church. This is a quote from their newsletter to explain more about this group. "Since 1988, the Evangelical Lutheran Education Association (ELEA) has provided support, advocacy and connections for schools and early learning centers sponsored by the ELCA congregations. ELEA memberships include 1,400 early child centers and about 100 elementary, middle-school and high schools throughout the nation.

The ELEA hosts workshops and conferences for administrators, teachers, board members and pastors, including an annual school Administrator and Pastor Conference and an annual intensive "Boot Camp" program for new or "need a boost" early childhood directors. ELEA also distributes resources in curriculum, administration and governance that strengthen the uniqueness of ELCA schools and centers. The association provides Member Benefits Programs and negotiated discounts for members with vendors, as well as, support and advocacy for its members."

We are taking registrations for 2019-20 and will be having an open house soon, most likely in early March. Stay tuned! Please pass the word along to any families with preschoolers to consider US! Tours are available Mondays and Wednesdays, just call Patsy for an appointment at: 796.2522 or pandp@faithspicer.org.

\*Don't forget to check out our Facebook page weekly:  
Praise and Play Preschool



Library Corner



How do we measure up?





# Children, Youth & Family

## Sunday School Classes

9:30am - 10:30am

*All Children welcome!*

*Haven't been to Sunday School yet this year?*

*No problem! Start anytime!*

*Contact James Lucas at*

*[education@faithspicer.org](mailto:education@faithspicer.org) to get started!*



## Children's Ministry Team Meeting

(Pre-school - 6th Grade)

**Sunday, March 17 at 10:30am after Sunday School.**

Have ideas?

Want to help our Children's ministry grow?

Come to our CMT meeting!

## Wednesdays at Faith Faith Seeds & Sprouts!

Seeds and Sprouts is a Wednesday night ministry for preschool through 6th grade led by James Lucas. We invite these children so parents have an opportunity to attend the adult education opportunity that night. We will study the bible together, talk through our week, and discuss how we see God in the world around us. There are also games and crafts, and we end our time together by praying, usually led by the kids! **Wednesdays in March 13, 20 & 27.**

**Join us March 6 a 6pm for ASH Wednesday Worship. There will be no other activities after worship.**

Seeds and Sprouts will begin at **6:35pm**, right after our **6:00pm worship**.

**\*\*Parents - we ask that if you plan on sending your kiddos to one of these groups that you please stay in the building. Thank you!** And don't forget to join us for our 5:15pm dinner as well! But make sure to sign up by Monday the week of.



## VBS/Day Camp July 29-August 1 Shores of St. Andrew



If you would like to volunteer to help with our VBS please contact James.

**Registration:** online through GLLM's website: [gllm.org](http://gllm.org).

**Cost:** \$30 per camper when you use the Faith Lutheran Member discount code "ONSITE2019" (members of Faith only) non member cost is \$90.

If you need help registering, contact James to get your child signed up!  
Children, Youth & Family Ministries Director - James Lucas:  
[education@faithspicer.org](mailto:education@faithspicer.org) or 320.796.2522.



~God gathers us as a family of Faith to nurture, inspire, and share the love of Jesus with all people~

## GRADE 5 COMMUNION RETREAT

### Grade 5 families - First Communion Retreat

Green Lake Bible Camp - March 15, 6:30pm - March 16, 7:00pm  
Explore communion and fun at GLBC!

This retreat is for all 5th Grade Students. There is no cost! Please sign up w/ James Lucas either at Sunday school or shoot him an email at [education@faithspicer.org](mailto:education@faithspicer.org). Pack overnight essential, sleeping bag, pillow, etc. and don't forget your Bible!

## NEW! Communion for Beginners (ages Pre-K through 4th grade)

We are excited to offer a new event for kids ages 3 (Pre-K) through 4th grade, along with their parents, who are interested in receiving communion. Please join us at Faith on **Saturday, April 13 from 9:00-10:30am** to learn all about and prepare for this very special part of worship and our Christian faith. This is not mandatory, and it will be left up to the discretion of parents to determine at what age their child is ready to take communion. All participants will celebrate their first communion during the Maundy Thursday evening worship on April 18. If you have questions or would like further information, please contact Pastor Seyward.



Our 5th and 6th graders are updating Faith's busy bags and creation stations as a service project. They would love your help collecting items for the bags and stations! Our project will be on March 17 during Sunday School, so items can be dropped off anytime before then in the youth group room. They'd love to fill the bags and stations with gently used or new:

- Books, Notebooks, Coloring books, Crayons
- Mechanical pencils, Wood puzzles
- Lacing cards, Quiet fidget spinners or cubes
- Magnetic writing boards, Duplos
- Quiet toys-small stuffed animals, puppets, Little People, etc.

Anything else that you think would work is certainly welcome! Thank you!!



### Youth Group!

Sundays - 4:00pm-6:00pm

9th-12th Grade come and join us for Christian centered discussions about topics you choose.

Meals are provided and are typically free unless specified.

9th-12th Grade students may bring a friend.

### Youth Ministry Team Meeting

7th Grade - 12th Grade

Wednesday, March 27 during the Feast meal.

Have some new ideas? Want to make our Youth ministry grow?  
Come to our YMT meetings!

### Looking at Summer Camp?

Take a brochure from our Welcome Center and check out all of Camp's great programs for all ages!

Want to know more? Come talk to James or email him with any questions.



## HELP! Coffee Hour Team Members NEEDED!

Do you enjoy coffee & fellowship on Sunday mornings?  
If the answer is YES would you please help by  
making coffee one Sunday a year?

Help!!!! If you enjoy visiting with friends during coffee hour would you please consider signing up to serve one time? A sign up board is in the Fellowship Hall.

We are in need of:

**Monthly Leaders** - will be responsible for scheduling workers for "their" month. Team members will already be listed, you just need to schedule them and ask if they need training or help. How easy is that?!

**Team Members** - set up/serve or serve/clean up or do the whole thing, one time out of 9 months!

Our hope is that these teams will continue year round. If at some point you do not wish to be on the team any longer, please let the leader know so we are able to recruit new servers.

If you have questions about the process, please contact Joy in the office at 796.2522.



Did you know that we collect Teals Market receipts? We add them up, turn them in and then receive 1% of the total! All the money we receive goes to help pay for our free community meal called Tuesday's Table. Please continue to bring us your receipts!

## Winter Weather Alerts

Faith Lutheran Church follows the NL-S school district closing for our activities. This includes preschool, Confirmation and the church office. Check for cancellations on Q102.5 FM radio's Operation Snow Desk, look on [www.yourq102.com](http://www.yourq102.com) or check our Facebook page.



It isn't over.....

## SPRING GATHERING

### "LAUGHTER & JOY"

Saturday, April 6

Kerkhoven Lutheran Church  
402 - 12th St. N., Kerkhoven

- Registration 9:00am
- Gathering 9:30am
- Coffee and refreshments begin at 9:00am
- Cost is \$10 and includes lunch
- Registrations due by March 25, sign up sheet is located on office bulletin board
- Please make checks payable to: Lakeland Conference

The theme is "Laughter and Joy" given by Marie Henriksen of Arco, MN. She explains that physical and mental health are gotten through these two subjects. Joy is one of the gifts of the spirit, and besides being a part of our relationship to God, joy is important for our own health and well-being. We learn about humor, laughter and joy and how they are different and yet the same. Hope to see you there!

## Got Shoes?

Faith now has a shoe collection box. The Spicer Sunrise Lions are collecting shoes for distribution to needy people around the world. The Lions will accept any footwear you'd care to donate: New shoes, old shoes, adult shoes, children's shoes, boots (and yes, even old ski boots and high heels!). Shoes that cannot be used for footwear are ground up and used as roadbed material in third world countries. We'll take 'em all!





~God gathers us as a family of Faith to nurture, inspire, and share the love of Jesus with all people~

## With Many Thanks

Dear Faith Lutheran brothers and sisters, Becky and I would like to thank you for your recent financial gift of love.

It was very well timed and we appreciate your support for the rejected and abandoned children of Kyrgyzstan.

Your gifts allow us to bring education to special needs orphans who otherwise would have no chance of learning!

It also allows us to help children that can't walk or feed themselves a change to become more independent.

Besides that it gives us the chance to share with them that their heavenly Father never rejected them and wants to call them His son or daughter!

Praying for God's blessings and peace for each of you this year!

If anyone would like to receive our monthly updates both family and ministry please let us know!

Our email is: [klz@mailclass.org](mailto:klz@mailclass.org).

Kyle & Becky Zimmerle & family

Thank you for your donation of \$1,504.32. Your gift makes a difference right here in northern Kandiyohi County. We are fueled by the generous support of your community.

With gratitude - Rhonda Otteson Executive Director

Thank you for your gift of \$155 to ELCA World Hunger. In this season of Epiphany, your gift shines with the light and blessing of Christ.

Rev. Daniel Rift - Director

Thank you for baking our communion bread wafers Josselyn Finstrom, Norma Monson and Lynda Manselle!

You are very appreciated.

Faith Altar Guild

## Family Promise National Receives Great News

As our local Family Promise program stays very busy meeting the needs of families experiencing homelessness in Kandiyohi County, we have received great news from the national level...

*"We have some exciting news to share! Non-profit evaluator Charity Navigator has awarded us our **sixth consecutive 4-star rating**! Charity Navigator bases its ratings on non-profits' financial health and commitment to accountability and transparency. The coveted 4-star rating is the highest a charity can receive.*

*Only 8% of the charities evaluated by Charity Navigator have received at least six consecutive 4-star ratings, proving that Family Promise is one of the most impactful charities in the country.*

*We could not have achieved this recognition without your support. Thank you for trusting us with your donations, your volunteer time, and your good will. Your support means so much to us and the families we serve.*

*Thank you for being a part of our mission to end family homelessness!"*

In 2018, Family Promise of Kandiyohi County served 29 families for a total of 81 people served. Every year since 2015 these numbers have steadily increased.

Most recently, here at Faith, we hosted 4 families (5 adults and 3 children) the week of February 3-10. A big THANK YOU to all who helped!

**We continue to need... more volunteers who are male, more overnight hosts, and financial donations. Thank you all!**

## You Are Giving Back!

Faith has received \$340 in credit to be used at the New 2 You Thrift Store in Willmar. All because Faith members donated their unwanted items! Anytime a supporter donates goods at New 2 You they have the option of assigning credit for their donation to a partner (Faith Lutheran Church) in the community while still receiving a tax deductible donation receipt.

Faith has decided to give our credit vouchers to Safe Avenues. Safe Avenues provides advocacy, parenting time services, and emergency safe shelter to victims of domestic and sexual violence. *Go to [willmarshelter.com](http://willmarshelter.com) for more information.*

New 2 You can be found at 1401 First St. S in Willmar. Check out their website at [cmcschool.org](http://cmcschool.org). Go to the support tab and down to New 2 You for more information on this program. Thank you for your donations!





## News from the Property Team

As was reported last month the Team is busy evaluating several items in an effort to ensure that your church is properly maintained in the same fashion as you expect your own home to be maintained and in an efficient and cost-conscious manner. The team is prioritizing work that needs doing and when is an appropriate time to get it done. There will be opportunity for volunteering and helping out as we move through the year. The church wishes to thank Brian Gieseke for donating the 26 inch snow blower we now use. It is working well and is appreciated by the members of the snow clearing teams. They have been busy this last month and if anyone else wishes to step up and help them I am sure that they would appreciate the effort. As a result of the donation of a smaller snow blower more suited to use by multiple individuals the church is now able to sell our larger Simplicity blower. Even though the snow continues to get deeper it also will not be long before we will be looking for lawn mowing teams so keep an eye open for that opportunity. Other items that we are working on include replacement of the burned out lamps in the parking lot lights along with replacing more of the fluorescent bulbs with LEDs to reduce energy costs. There will be some new shingles to replace hail damaged ones when the weather warms up which should be covered by insurance. Please stay tuned for additional property updates as the year progresses. Thanks to all who have volunteered for the many tasks needed to keep our church home an appealing and attractive facility to use.

## Simplicity PRO Snow Blower For Sale

Simplicity PRO Snow blower P1738e used very little. Has a brand new engine, electric and/or rope pull start, looks like new. This blower is ideal for moving the March snows out of your driveway. Contact Jeff Johnson by email [property@faithspicer.org](mailto:property@faithspicer.org).



## **Tuesday's Table**

### **March Schedule**

*Serving from 6:00-6:30pm*

**March 5:** Our Lady of the Lakes Catholic

**March 12:** Evangelical Covenant Church

**March 19:** Faith Lutheran Church

**March 26:** Peace Lutheran Church

## **Household Exchange & Food Pantry Hours**

Tuesday: 9am-3pm

Thursday: 9am-3pm

Wednesday: 2pm - 5pm

## **Revive + Redeem**

### **Boutique | Thrift Hours**

Tuesday: 10am-3pm

Thursday: 10am-3pm

Saturday: 9am-1pm



## **Stock the Pantry**

**Key food items:** Milk, eggs, bread, cereal, canned fruits & vegetables, noodles and sauce, peanut butter, jelly and tuna. Please contact Chasity at 354.5555 to make a donation of food.

### **The Link**

**P.O. Box 823**

**New London, MN 56273**

Telephone: 320.354.5555 or 320.354.5465

*Physical address: 206 Main St. N, New London*

*Rhonda Otteson*

[director@youarethelink.org](mailto:director@youarethelink.org)

*Chasity Ommodt*

[outreach@youarethelink.org](mailto:outreach@youarethelink.org)

*Shawna Roemeling*

[coordinator@youarethelink.org](mailto:coordinator@youarethelink.org)

## March 2019 Bible Study

Gospel of John

Meetings with Jesus: Friends for life in Christ

Theme verse: John 15:15

### Quilting

March 11 & 12

March 25 & 26

### Esther Bible Study Circle

March 20 @ 9:30am

### Rachel Bible Study

March 28 @ 1:30pm

Everyone is invited to join us in our Bible Studies and mission projects. For more information contact Nona Oie 796-5554.

## WORLD DAY OF PRAYER MARCH 1

This day around the world Christian women, men, and children of all cultures, traditions, and races, in over 170 countries unite in prayer to: (1) affirm their belief and faith in Christ; (2) be enriched by the experiences of other Christians, their countries & cultures; (3) pray for and /or with others for the burdens of others; (4) become more aware of their own talents, and to be encouraged to use them in Christian service; (5) develop awareness of the world as a whole, and to understand and appreciate that God loves all people everywhere.

**Prayer and action are inseparable: Let us join hands with the people all around the world praising God and asking him for his everlasting love and guidance to all people.**



## Community Garden

Spring is on the way or at least we can hope. Time to start thinking on renting your garden spot and all the yummy food your going to grow.

Be on the look out for the meeting dates to be held mid April. All ready sure about your garden plot? Call Lynda at 320-796-6502 to get your name down.

- 1) Jared Hood, Jamin Johnson, Leland Lundberg, Suzanne Schneider, Matthew Thompson, Gene Wenzel
- 2) Christina Collins, Melanie Downey, Keri McLain, Brenda Negen, Jennifer Rooney, Allen Ruter, Dwayne Spaulding, Bev Tharaldson, Jamie Thompson, Pat Thompson
- 3) Emily Keck, Hollyn Olness, Robert Wiley
- 4) Arlys Gronli, Bonnie Haug, Deb Knudsen, Becca Reigstad, Lisa Stahl
- 5) Aaron Jensen, Carla Lagerstedt, Barb Olson
- 6) Kristin Dalton, Martin DeZeeuw, Leone Goebel, Val Roberts, Bjorn Sogge
- 7) James Buzzeo, Kelly Cappelen, Kris Gatzemeyer, Melanie Isdal, Ross Olness, Luke Solberg
- 8) Whitney Allen, Ty Bisek, Whitney Robinson, Steve Vanderwerf
- 9) Quintin Fredrick, Michael Klaers, Riley Larcom
- 10) Jerry Butler, Hudson Hansen, Julie Honzay, Wesley Lere, Eric Schneider
- 11) Olivia Hillstrom, Paul Larson, Austin Quale, Nicholas Spillman
- 12) Nancy Hall, Josina Klebe, Tanner Olson, Gunnar Swenson
- 13) Dean Erickson, Caden Lien, Blanche Peterson, Ronald Sebey
- 14) Ryan Debner, Karen Dresser, Charles Larson
- 15) Ryan Allen, Tyson Gislason
- 16) Joshua Erickson, Kraig Hanson, Kevin Rueckert
- 17) Ernest Erickson, Ben Hoffman, Deb Rohner, Ella Schammel
- 18) Leland Kallevig, Sonja Madsen, Ron Nelson, Lisa Quam, Evan Swenson
- 19) Jody Driggs, Bob Knutson, Eli Lippert
- 20) Jaden Hunter, Emily Jensen, Jeff Johnson, Ashley Reiter
- 21) Guy Christanson, Jennifer Davenport, Amy Freidrichs, Steve Quam
- 22)
- 23) Joline Hovland, Parker Peterson, Sara Peterson
- 24) Charlie Hauer, Jake Poole
- 25) Jennifer Hanson, Duane Loe, Roger Valentine
- 26) Barb Bloedel, Darren Hardebeck, Lisa Wig
- 27) Ryan Doty, Nathan Hoekstra, Mike Holden, Jakson Martens, Lili Sampson
- 28) Alex Hardebeck, Susan Justi, Grace Lange, Jamie Malone, Todd Nelsen
- 29) LaVay Borresen, Scott Guptill, Barb Loftness, Emma Rohman, Megan Rooney
- 30) Sheryl Johnson, Nona Oie, Eben Pederson, Jack Wig
- 31) Katie Kleidon, Kim Larsen, Tom Monson, Agapito Santibanez, Rochelle Scheevel





SUNDAY	MONDAY	TUESDAY	WEDNESDAY	THURSDAY	FRIDAY	SATURDAY
					1 7:30am-5:30pm Preschool	2 9am Bible Study  1pm-4pm Essential Oils 101 Class
3 <b>8:30am Blue Grass Worship</b>  9:30am Coffee/ Sunday School  <b>10:35am Blue- grass Worship</b>  4pm-6pm Youth Group  Special Offering - Camp	4 7:30am-5:30pm Preschool  8:15am Amazing Bible Study  10:30am Staff	5 7:30am-5:30pm Pre- school  5pm-7pm Shrove Tuesday Pancake Dinner  6pm-6:30pm Tuesday's Table @ LOLOL Catholic	6 7:30am-5:30pm Pre- school  5:15pm-5:50pm Meal  <b>6pm ASH Wednesday Worship</b>  No Activities  7pm - Choir	7 7:30am-5:30pm Preschool  9:30am Bible Study  10:40am Preschool Chapel  3:30pm-9:30pm JFK	8 7:30am-5:30pm Preschool  Office is Closed  6:30pm Hobby Night	9 9am Bible Study
10 <b>8:30am Worship</b>  9:30am Coffee/ Sunday School  <b>10:35am Worship</b>  4pm-6pm Youth Group  Daylight Savings	11 7:30am-5:30pm Preschool  8:15am Last Amazing Bible Study  9am-3pm Quilting  5:30pm-6:30pm JFK	12 6:30am Guys on the Go Bible Study  7:30am-5:30pm Pre- school  9am-3pm Quilting  6pm Mission Resource Team Meeting  6pm-6:30pm Tuesday's Table @ Evangelical Covenant Church	13 7:30am-5:30pm Pre- school  10:30am Staff  5:15pm-5:50pm Meal  <b>6pm-6:30pm Wor- ship</b>  6:35pm Education  7:35pm - Choir	14 7:30am-5:30pm Preschool  9:30am Bible Study  10:40am Preschool Chapel  3:30pm-9:30pm JFK  6pm Council	15 7:30am-5:30pm Preschool	16 9am Bible Study
17 <b>8:30am Worship</b>  9:30am Coffee/ Sunday School  <b>10:35am Worship</b>  4pm-6pm Youth Group	18 7:30am-5:30pm Preschool  10:30am Staff  4:30pm Link Board  5:30pm-6:30pm JFK	19 7:30am-5:30pm Pre- school  6pm-6:30pm Tuesday's Table @ Faith	20 7:30am-5:30pm Pre- school  9:30am Esther Circle @ Glen Oaks  5:15pm-5:50pm Meal  <b>6pm-6:30pm Wor- ship</b>  6:35pm Education  7:35pm - Choir	21 7:30am-5:30pm Preschool  9:30am Bible Study  10:40am Preschool Chapel  3:30pm-9:30pm JFK  6:30pm Faith On Tap @ Goat Ridge Brew- ery in New London	22 7:30am-5:30pm Preschool	23 9am Bible Study
24 <b>8:30am Worship</b>  9:30am Coffee/ Sunday School  <b>10:35am Worship</b>  4pm-6pm Youth Group	25 10:30am Staff  9am-3pm Quilting  5:30pm-6:30pm JFK	26 6:30am Guys on the Go Bible Study  9am-3pm Quilting  6pm-6:30pm Tuesday's Table @ Peace Lutheran	27   5:15pm-5:50pm Meal  <b>6pm-6:30pm Wor- ship</b>  6:35pm Education  7:35pm - Choir	28 9:30am Bible Study  10:40am Preschool Chapel  1:30pm Rachel Circle  3:30pm-9:30pm JFK	29	30 9am Bible Study
31 <b>8:30am Worship</b>  9:30am Coffee/ Sunday School  <b>10:35am Worship</b>  4pm-6pm Youth Group						

FAITH LUTHERAN CHURCH

310 Medayto Drive  
Spicer, MN 56288

ADDRESS SERVICE  
REQUESTED

NON-PROFIT ORGANIZATION

U.S. POSTAGE PERMIT #8

SPICER, MN 56288



PHONE  
320.796.2522

EMAIL: [office@faithspicer.org](mailto:office@faithspicer.org)  
WEBSITE: [www.faithspicer.org](http://www.faithspicer.org)

**Worship Times**  
**Labor Day — Memorial Day**  
**At Faith Lutheran Church**  
Wednesdays 6:00pm-6:30pm  
Sunday at 8:30am & 10:35am  
Education Hour at 9:30am

**Memorial Day — Labor Day**  
**At Green Lake Bible Camp Chapel**  
Saturday at 6:00pm  
Sunday at 8:30am  
**At Faith — Sunday at 10:00am**



## Easter Lily Orders

Purchase an Easter Lily in honor or in memory of a loved one for our Easter Sunday Services. Forms are available at the Welcome Center. Cost is \$12.00 per plant.