

URINE COLLECTION

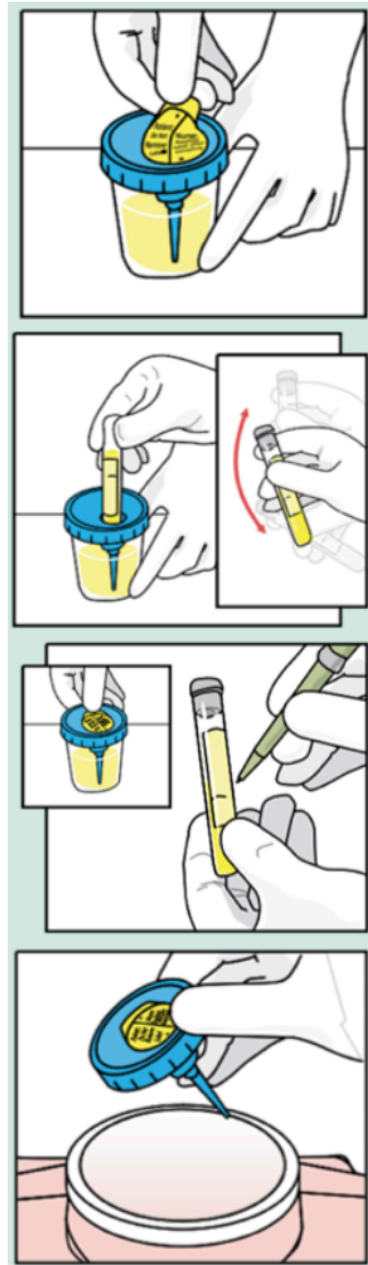
YOUR DOCTOR WILL INSTRUCT YOU ON WHEN TO COLLECT THIS URINE SPECIMEN

1. Wash your hands with soap and water.
2. Open the towelette. Clean the genital area around where the urine exits the body.

Females: Use fingers to open labia (folds covering urethra) to clean urethral opening. Use towelettes to wipe from front to back. Dispose of towelettes.

Males: If present, bring the foreskin back, and wipe the head of the penis with a towelette. Dispose of towelettes.

3. Open the sterile urine collection cup.
4. Begin urinating. After a few seconds, direct the urine into the cup. Fill ~ 2/3's of the way. Finish urinating.
5. Replace the lid on the specimen cup.



URINE TRANSFER

1. Remove the protective sticker from the cup lid to expose it. Be careful to not touch the syringe, as it is sharp.
2. Push the grey top of the tube onto the syringe adaptor until the flow stops, at least to the minimum fill line (4 ml).
3. Remove the tube and shake gently for 10 seconds to mix the preservative with the urine.
4. Ensure that your name and date of birth are on the tube.
5. Mark the current date and time of collection on the tube.
6. Dispose of the extra urine and cup. Keep the tube to be sent to the lab.

SHIPPING

1. Place the tube containing the urine into the biospecimen bag.
2. The biospecimen bag will contain the paperwork completed by your doctor. Ensure this paperwork is put into the FedEx bag.
3. Seal the FedEx bag.
4. Specimen Delivery Options:

Dropoff

Mokan Labs, LLC
14215 Metcalf Ave
Overland Park, KS 66223

Mon – Fri between 9am - 4pm

Ship directly via FedEx

Take your pre-paid envelope directly to any FedEx location.

If put into a FedEx drop box, ensure it has not already been picked up for the day (time listed on the box).

