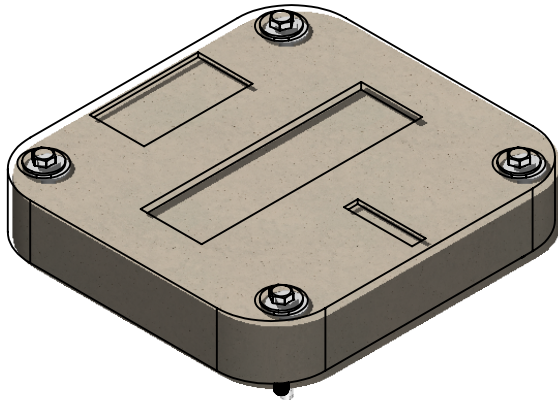




## POLYMER CONCRETE BOX & COVER



### MODEL 1212/12 PC



#### COVER

Dimensions*	12" x 12" x 1"
Material	Polymer Concrete
Style	Single Piece
Fasteners	3/8-16 x 3" SS Hex Bolt
Lift points	1/4" SS Rod
Non-skid cover	

Custom Logo Available

#### Body

Dimensions*	14" x 14" x 12"
Material	Polymer Concrete
Additional Depths Available	

#### Description

- \*Vault Weight: 30 lbs.
- \*Cover Weight: 12 lbs.
- \*Total Assembly weight: 42 lbs.
- \*Vaults per pallet: 48
- Vaults per truck: 1,056
- \*Truckload weight includes pallets:
- \*45,232 lbs.

\* All Weights And Dimensions Are Approximate

#### Vertical Loading Requirements

Design Load: 22,500 lbs.

Test Load: 33,750 lbs.

#### Lateral Loading Requirements

Design Load: 800 lbs./sq. ft.

Test Load: 1,200 lbs./sq. ft.

#### Optional Accessories

- EMS Frequency Markers
- Metallic Locate Plates
- Mouse Holes
- Conduit Ports
- Cable Racking Hooks