

# CHELTENHAM ART eBULLETIN

Your monthly guide  
to the visual arts in  
the Cheltenham area

**AUGUST 2025**



Our monthly guide to the visual arts in the Cheltenham area.

Published by ARTEbulletin, hello@artebulletin.co.uk

**Spring Cheltenham**

14 Rotunda Terrace, Montpellier Street,  
Cheltenham, GL50 1SW

[Springcheltenham.com](http://Springcheltenham.com)

**.. 5 August**

**Views In Frame** - A collection of Plein Air Landscapes by Belinda Millar.



**6 - 16 August (Closed Monday 11th)**

**Open daily 10am - 5pm**

**Facets Of Venice** – A solo exhibition by Jeremy Duncan.



**17 August – 2 September**

**Closed for their summer break**

**Sixteen Gallery**

16 Rotunda Terrace, Montpellier Street,  
Cheltenham, GL50 1SW

[sixteengallery.com](http://sixteengallery.com)

**31 July - 6 August**

**Barbara Curry – Joyful** - A Presentation Of Barbara Curry's Textured Oil Paintings, Celebrating Her Cotswold Walking Country Surroundings.

**7 - 13 August**

**Alchemy Of Colour Janet Chaplin & Caroline Davies.** A Vibrant Joint Exhibition By Painter Janet Chaplin And Ceramicist Caroline Davies, Celebrating The Synergy Between Their Work.

**14 - 20 August**

**It's Best To Pop In For A Proper Look.** Gerald Crittle, Debbie Smith & Magalie Briand. An Exhibition Of Abstract Paintings, Quirky Wall Objects, Fused Glass And Handmade Paper-Based Treasures.

**21 - 27 August**

**Art In Bloom - Dawn Booth** Nottinghamshire artist Dawn Booth presents a Floral Exhibition immersing Viewers Into a world of vibrant colour and beauty.

**28 August - 10 September**

**The Open Call Exhibition** The Culmination of their first Open Call, This exhibition brings to the gallery 50 works chosen by our expert judges from over 700 entries. Expect an eclectic exhibition of Excellent Pieces Spanning Painting, Ceramics And More.

**For Information** on all exhibitions coming up, Sixteen online and other gallery news visit: [Sixteengallery.Com](http://Sixteengallery.Com)

Our monthly guide to the visual arts in the Cheltenham area.

Published by ARTebulletin, hello@artebulletin.co.uk

**GARDENS GALLERY**

Montpellier Gardens,  
Cheltenham GL50 2XL  
[Gardensgallery.co.uk](http://Gardensgallery.co.uk)

**30 July - 5 August**

**Abstracted Horizons** - An exhibition of works by Tony Davie. For more information please visit: [tonydavie.co.uk](http://tonydavie.co.uk)



**6 – 12 August**

**A Sense of Place** - An exhibition of paintings by Andrew Dawes. an observational painter using acrylics he focuses on shapes, colours, and, most importantly, light to convey moments that captivate him. This is his fourth exhibition at the gallery.



**GARDENS GALLERY**

Montpellier Gardens,  
Cheltenham GL50 2XL  
[Gardensgallery.co.uk](http://Gardensgallery.co.uk)

**13 – 19 August**

**Lost in Wonder** - Miriam Hulley and Mark Wagstaff express a sense of wonder through their art. Both artists are delighted to include an exciting collaborative prayer book exhibit. This was coordinated by fellow artist Beverley Healy and includes the work of many artists from around the world.



**20 – 26 August**

**Four Perspectives.** An exhibition of works by Beverley Perry, Wendy Golding, Ewen Hyde & L.Arnold Larne.



**27 August - 2 September**

**Light On The Edge** - Inspired by the Cotswold Way and Cornish Coastal Path. Martin shares his journey capturing the light as it creates form, colour and atmosphere on the landscapes of Gloucestershire and the dramatic Cornish Coast. With Cotswold Woodturner, Rodger Harrison, celebrating light on the wood.

Our monthly guide to the visual arts in the Cheltenham area.

Published by ARTEbulletin, hello@artebulletin.co.uk

### The Wilson

Cheltenham Art Gallery and Museum  
Clarence St, Cheltenham GL50 3JT  
[cheltenhammuseum.org.uk](http://cheltenhammuseum.org.uk)

**Tuesday to Saturday 10am to 5pm, Sunday 10am to 4pm.**  
**The Wilson Kitchen is open**  
**Mon – Sat 10am - 5pm, Sun 10 - 4pm**

**.. until 31 August**

**Common Ground** - Curated by painter and folklorist Ben Edge, Common Ground brings together works by contemporary artists and objects from The Wilson's collection to explore land use and access throughout history in Cheltenham, the Cotswolds & the UK.

**... until 21 September**

**Playground** - Step into a playful summer adventure at The Wilson, where Cheltenham's parks, ponds, and green spaces inspire a season of discovery.

Explore beautiful textile art, travel back in time to the Pittville Boating Pond, and watch a film of this year's Cheese Rolling at Coopers Hill by Emlyn Bainbridge. Follow nature trails, enjoy storytelling sessions, and take part in hands-on creative activities.

Designed for all ages, from toddlers to grown-ups, Playground offers games, creative challenges, and changing nature trails that encourage visitors to venture out and rediscover Cheltenham's outdoor spaces.

For information on all other exhibitions and events please visit the website

[cheltenhammuseum.org.uk](http://cheltenhammuseum.org.uk)

The Wilson Art Gallery and Museum  
51 Clarence St, Cheltenham GL50 3JT

**Wednesday 6 August, 6-9pm.**  
**FREE ENTRY**

**Art of the Skateboard (part 2)** - the first one in July was so successful they're bringing everyone back for more. Expect an exciting evening of drop-in workshops, music, artist stalls, and there will be an open mic for anyone who wants to share a talent.

This event is being organised in collaboration with Gallery Skateboards and Friends of Montpellier Skatepark who are raising money for the redevelopment of the skatepark. In honour of this, local street artist, **Zed in the Clouds**, will be leading a **Custom Skateboard Workshop** - where you can design and take home your own custom skateboard deck. The cost to join this workshop will be **between £15 - £25**.

There will also be a **finger boarding zone** - feel free to bring your own! With Competitions + Prizes from We Are Rubicon.

+ Artist stalls featuring unique local creatives, DJs, and of course Cheltenham Improv Orchestra.



Our monthly guide to the visual arts in the Cheltenham area.

Published by ARTEbulletin, hello@artebulletin.co.uk

**The Quad Walk Gallery**

Francis Close hall  
University of Gloucestershire,  
St Pauls Rd  
Cheltenham GL50 4AZ

**1 – 28 August**

**Weekdays from 10am - 4pm**

please phone the library desk for admission **01242 714600..**

Enter FHC campus from St Pauls road, middle entrance walk straight ahead, past the canteen, Chapel on your right, head over to the Library door far right and phone for admission.

**Small works**

The work of: Jenny Westbrook, Andy Goodwin, Shaun Hughes, Sue Durkin, Betty Harrison, Lisa Lavery, Tom Graham, Luba Arnold Larnie, Paul McKee, Jane Brighton, Carole Austen, Tamsin Hyde.



**Paragon Gallery**

4 Rotunda Terrace, Montpellier Street,  
Cheltenham GL50 1SW  
[paragongallery.co.uk](http://paragongallery.co.uk)

**4 July - 2 August, 10am - 5pm**

**Private View Evening**

**Thursday 3 July from 5-8pm**

Join the team in the gallery for a glass of wine and dive into the wonderful world of Matisse.

**Henri Matisse | An Exhibition of Original Prints**

One of the most extraordinary draughtsmen of the 20th Century and a colourist of unsurpassed brilliance, Henri Matisse was a trailblazer in every respect, and Paragon Gallery are thrilled to announce a new exhibition of the artist's graphic work, to be held this summer.



**PARAGON** Gallery

Our monthly guide to the visual arts in the Cheltenham area.

Published by ARTEbulletin, hello@artebulletin.co.uk

**New Brewery Arts**

Brewery Court  
Cirencester GL7 1JH  
[newbreweryarts.org.uk](http://newbreweryarts.org.uk)

**9am to 5pm Monday;  
10am to 5pm Tuesday;  
9am to 5pm Wednesday to Saturday  
Admission: Free of charge**

**19 Jul - 4 Oct**

**ORPHEUS UP CLOSE –**

Meet Cirencester’s newest arrival - Orpheus, a three-meter-high puppet by renowned artist Russell Kirk, alongside community-crafted puppets from local schools and groups.

**Parade Puppet Making**

**FREE - just drop-in**

A family event, a chance for children and their grown-up to get creative together.

Saturday 16th August, 11 - 4pm

Wednesday 20th August, 11 - 4pm

**Orpheus Day**

Saturday 23rd August, 10am

**FREE** - Abbey Grounds for the parade

**Let’s Make Art**

**FREE - just drop-in** - A family event, a chance for children and their grown-up to get creative together.

Thursday 28th August, 11 - 3pm

Friday 29th August, 11 - 3pm

Saturday 30th August, 11 - 3pm

Follow [@orpheus2025](https://twitter.com/orpheus2025)



**Nature in Art Museum & Art Gallery**

Main A38 Twigworth  
Gloucester GL2 9PA  
[natureinart.org.uk](http://natureinart.org.uk)

**Opening times: Tuesday - Sunday  
(& bank holidays) 10am - 5pm**

**24 August - 7 September**

**Closed Monday, 1 September**

Everyone is welcome to the private viewing **Saturday 23 Aug, 7pm - 9pm**

**Gloucestershire Society of Artists,**

**Annual Exhibition** - showcasing a wide range of artworks by its members.



**Until 7 September**

**British Wildlife photography Awards**

This prestigious competition has toured the UK since 2009, celebrating the talent of wildlife photographers in the UK whilst highlighting the beauty of British landscape and wildlife, as well as contemporary issues in conservation, biodiversity and climate change. Open to all ages, ready to inspire young minds and challenge some of us older ones.

**until 10 August = Gloucestershire Coloured Pencil Artists Exhibition**

Visit the website for more information.  
[natureinart.org.uk/](http://natureinart.org.uk/)

Our monthly guide to the visual arts in the Cheltenham area.

Published by ARTEbulletin, hello@artebulletin.co.uk

**Lansdown Gallery**  
 Stroud GL5 1BB  
[Lansdownhall.org](http://Lansdownhall.org)

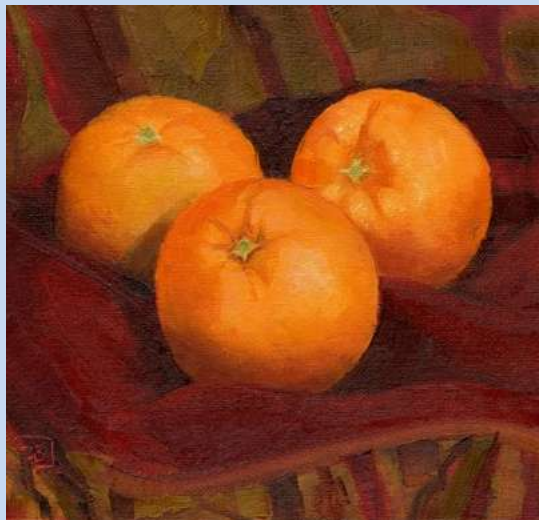
**Aleph Contemporary**  
 Station Road,  
 Stroud, GL5 3AR  
[Alephcontemporary.com](http://Alephcontemporary.com)

**5 – 11 August, 10am – 4pm**  
**Open Evening 6 August, 6-8pm**

**The Painting Life**

**Paintings by Chris Bingle**

The show is an overview of work spanning 40+ years, with figures, still life and in recent years, mostly plein air landscape painting.



For more information, please visit [subtlecolours.com](http://subtlecolours.com)

**11 July – 30 August**

**August Opening times**

Fri 1st & Sat 2nd - Open  
 Sat 9th - Open  
 Fri 15th & Sat 16th - Open  
 Fri 22nd & Sat 23rd - Open  
 Fri 29nd & Sat 30th - Open  
 10 am - 4 pm  
and by appointment  
 (Closed Friday 8th)

**WATER WAYS - A collection of oil paintings by Angie Spencer**

*"I paint best when I am immersed in the landscape that I am painting."* And it shows. Her canvases hum with life.

The **WATER WAYS** exhibition is, in many ways, a summation of this philosophy. Water — be it the sea, the river, the garden pond or lake — is the lifeblood of the work. And yet, this is no idle theme. Each painting is a choreography of rhythms carefully observed and interpreted."



Our monthly guide to the visual arts in the Cheltenham area.

Published by ARTEbulletin, hello@artebulletin.co.uk

**Three Storeys**  
 Old Bristol Road  
 Nailsworth, GL6 0JE  
[threestoreys.co.uk](http://threestoreys.co.uk)

**16 – 21 September, 10am – 4pm**  
 Free entry

**Cotswold Art Club Art Exhibition**

Over twenty artists will be exhibiting with exciting subjects and styles to suit all tastes.



COTSWOLD ART CLUB



THREE STOREYS

For more information on all other exhibitions coming up, please visit:  
[threestoreys.co.uk](http://threestoreys.co.uk)

**Museum in the Park**  
 Stroud GL5 4AF  
[museum@stroud.gov.uk](mailto:museum@stroud.gov.uk)

**„ until 31 August**  
**Future Forecasts - Cheltenham**  
**Illustration Awards 2024**

Come and enjoy the new collection of visual stories by student and emerging illustrators from around the globe. The Cheltenham Illustration Awards have been running since 2007. Each piece of narrative art interprets the theme of the year in a thoughtful and insightful way. The theme of 2024 was ‘future forecasts’ and judges were particularly impressed with the range of materials and image-making processes used this year including printed objects, dioramas, and knitting!



Competition and exhibition organised by **The University of Gloucestershire** and **Pittville Press**. @pittvillepress



Our monthly guide to the visual arts in the Cheltenham area.

Published by ARTEbulletin, hello@artebulletin.co.uk

**Cotswold Sculptor Exhibition**

Dr Jenners House  
Church Lane, Berkeley GL13 9BN  
[jennermuseum.com](http://jennermuseum.com)

**Until 13 September**  
**Sun-Wed 11am-4pm**

Free admission with Museum entry, please see the museum website for details

**“Why not think? Why not try the Experiment?”**

The inspiration was an exhortation to Edward Jenner by fellow scientist, John Hunter, to stop thinking ‘What If?’, but to just go ahead, experiment and find out.

So, we invited artists to be inspired by Edward Jenner and his myriad of interests, respond to the historic home and gardens and take up the opportunity and platform to try something different, and most importantly to *experiment!*

18 sculptors rose to the challenge and have been inspired to experiment, explore and push themselves just as Edward Jenner did. We hope that visitors will be inspired to think differently about sculpture and enjoy the experience of looking at Jenner’s interests and achievements through an artist’s lens.

Dr Jenners’ House, the birthplace of vaccination, tells the story of the pioneering polymath Edward Jenner (1749-1823), the eradication of smallpox and his ongoing legacy of vaccination. It’s a small independent museum with around 5000 visitors.



**Spencer House Gallery**

Spencer House, 34 Long Street  
Tetbury GL8 8AQ  
[spencerhousegallery.co.uk](http://spencerhousegallery.co.uk)

... until 25 August,  
10am – 1pm & 2 - 5pm  
Core Opening: Thurs – Saturday

**Indulgence**  
**Rococo-inspired flamboyance, ornament and colour**

This summer indulge in all things Rococo and Baroque as the SHG team up with South Cotswolds partners for the *Rococo Rocks!* festival of music, art and garden design.

Winner of the Plein Air Art Contest at Painswick Rococo Garden, Mark Owen will be exhibiting alongside the other fantastic works.



Our monthly guide to the visual arts in the Cheltenham area.

Published by ARTEbulletin, hello@artebulletin.co.uk

**The Edgeler Collection**  
Queen Anne House  
Winchcombe, GL54 5LJ  
[edgelercollection.com](http://edgelercollection.com)

.. until 30 August 2025  
Wednesday – Saturday, 10am - 4pm

### **Fish, Fur & Feathers** **Animal Designs in Studio Pottery**

A showcase of superb pots from the permanent collection which use animal imagery as the central decorative theme. Also on display will be fine pieces by contemporary potters Andrew McGarva and Philip Wood, from founder John Edgeler's personal collection. The exhibition centres on their core collection of earthenware pots made at Winchcombe Pottery by Michael Cardew and Ray Finch.

There will be a selection of work for sale by local potters.

Do drop by and have a look, there really is some beautiful work in the collection!



**Gloucestershire Guild**  
18 Rotunda Terrace  
Montpellier Street  
Cheltenham GL50 1SW  
[guildcrafts.org.uk](http://guildcrafts.org.uk)

**Shop Open**  
Monday - Saturday 10am - 5pm.

**The Gloucestershire Guild** Shop is the place to buy contemporary craft in Cheltenham. You will find beautiful handmade work by our selected professional makers including contemporary jewellery, ceramics, textiles, furniture, leatherwork, glass and baskets.

### **Welcome Two New Guild Members**

**Matt Grimmitt** has hand thrown pots for almost 20 years having spent over half of his career as a potter and manager at the historic Winchcombe Pottery and has been making slipware pots since March 2024 from his own workshop in Evesham.

**Siobhan Joan** throws stoneware ceramics on the wheel; a process she finds mindful and beautiful and helps her find balance alongside being a primary school teacher.

Siobhan's work is often described as being fresh, yet quiet and soft. She makes calm and subtly coloured glazes, combined with crafting simple and minimal shapes, to create timeless forms that feel classic and modern at once.



**Lions at Large Trail**  
[lionsatlarge.co.uk](http://lionsatlarge.co.uk)

,.. until 14 September

**Lions at Large Trail** across Cheltenham and Gloucester to raise funds for The Big Space

There are 32 large Lion sculptures, painted by local artists; celebrating Gloucestershire’s rich history, culture and diversity. They are joined by our Cub Club – a pride of 54 little Lions lovingly created by local schools and community groups.

This is a fun, free and family-friendly Wild in Art event. Streets, parks and open spaces are dazzling with vibrant colours and surprising designs.

Once the trail is over, the pride will reunite for **a fantastic farewell weekend**, taking place at the iconic Cheltenham Racecourse from **Friday 3rd – Sunday 5th October**. After this, the little Lions will return to their forever homes at the local school and community groups who created them.

The large Lions will then be auctioned to raise funds for proposed new cancer care facilities in Cheltenham with digital consulting rooms, space for state-of-the-art research, as well as a therapeutic outside space.



For all the details visit:  
[lionsatlarge.co.uk](http://lionsatlarge.co.uk)

**Crafts Alive at Rodmarton**  
 Rodmarton Manor  
 Nr. Cirencester GL7 6PF  
[guildcrafts.org.uk](http://guildcrafts.org.uk)

**10 – 14 September 2025**  
**Open Daily 10am - 5pm**

-  
**Crafts Alive –**  
**Flowers and the Maker**

In September 2025, the Gloucestershire Guild presents the fourth Crafts Alive five day festival, a unique re-imagining of one of the country’s finest Arts and Crafts houses, Rodmarton Manor in Gloucestershire.

The festival celebrates outstanding contemporary crafts, including an exhibition of work especially made for, and inspired by the house and its gardens with the emphasis on sustainability.

Original work will be for sale, alongside guest exhibitors, demonstrations, workshops, talks and delicious locally made food and drink.

For all the workshops and tickets please visit

[guildcrafts.org.uk/collections/crafts-alive-at-rodmarton-manor-day-tickets?mc\\_cid=eccdcea47e&mc\\_eid=8b84b4bc40](http://guildcrafts.org.uk/collections/crafts-alive-at-rodmarton-manor-day-tickets?mc_cid=eccdcea47e&mc_eid=8b84b4bc40)



Our monthly guide to the visual arts in the Cheltenham area.

Published by ARTEbulletin, hello@artebulletin.co.uk

**Cheltenham School of Fine Art**

32 Wellington Lane  
Cheltenham, GL52 2AG  
[cheltfineart.co.uk](http://cheltfineart.co.uk)

**Cheltenham School of Fine Art**



**Weekend Workshops** - There is a programme of weekend workshops coming online over the next few weeks. Some are already available to book. [Cheltfineart.co.uk](http://Cheltfineart.co.uk)

**Autumn Term** - Many classes are already full and there are remaining spaces advertised online including daytime watercolour, and Tuesday and Thursday evening classes.

**Children's Art Club** - Cheltfineart is running a series of after school art classes on Wednesday afternoon / evening. To register your interest for a space please go online

**August Summer School** - The last summer school of this year is a three-day multi-disciplinary event. The topics and techniques offered will include watercolour, drawing, printing, oil & acrylic painting.

Booking online [cheltfineart.co.uk](http://cheltfineart.co.uk).

Please don't hesitate to get in touch if you have any questions.  
**07522 003 024** or  
[cheltfineart@proton.me](mailto:cheltfineart@proton.me)

**Workshops**

**10 September, 9.45 – 1pm.**

**Collage Workshops**

**with artist Helen Norman  
The Hen House, Staunton**

Create your own Impressionistic Collage with experienced collage artist Helen, who has many years of experience in both exhibiting and teaching Collage. She will guide you through this relaxing, eco-friendly and mindful workshop, taking great care to help you to select your chosen subject from her bank of exciting pictures.

**Cost : £50**

For more information  
Email: [nickivizor@gmail.com](mailto:nickivizor@gmail.com)  
Or call **07765 418887**



Our monthly guide to the visual arts in the Cheltenham area.

Published by ARTEbulletin, hello@artebulletin.co.uk

## ART CLASSES

**Gemma Hastilow - Art Classes**  
**Weekly classes** in Winchcombe and Bishop's Cleeve

**Saturday 9 August, 9.30am - 5pm**  
**Drawn To Nature** - A Guided Walk and Art Workshop in Beautiful Winchcombe **£50 pp**

**Summer School**  
**11 August, 10-4pm**  
**Life Drawing Fundamentals, £40**

**12 August, 10-3pm,**  
**Capturing Cascades, £55**

**13 August, 10am-3pm**  
**Paint the Wild, £65**

**18 August, 10am-3pm**  
**Underwater Impressions, £55**

**19 August, 10am -3pm**  
**Wings and Washes. £55**

### CLASSES:

- **Mondays** - Life Drawing: Hone your drawing skills working from live models.

- **Tuesdays** - Art for beginners Unleash your creativity, learning all the basics.

- **Wednesdays** - \* **NEW** \*  
 Beginners Acrylic Painting:

- **Fridays** - Watercolours for Beginners:

For all info, including costs and how to book on the **2025** programme of **weekend workshops, weekly classes and more!** visit

[gemmahastilow.co.uk](http://gemmahastilow.co.uk)

## GPC

Griffin Mill, Stroud.  
[www.gpchq.co.uk](http://www.gpchq.co.uk)

Explore a world of different types of Printmaking in this the 20<sup>th</sup> Anniversary.

**Autumn Term Course Are Now Live!**

**Print Summer School.**

**.... Until 14 August**

Ranging from 1-day workshops to 4-day courses.



Founded in 2005 the GPC is a unique fine art printmaking facility in Stroud, Since then they have continually improved the space for printmakers to be able to work and develop their practice and enable people to learn a variety of printmaking techniques and skills through a rich program of courses and workshops in the specialist studios which cater for etching, relief printmaking, silkscreen printing, letterpress, stone and plate lithography.

Visit the website for all the detail, including other courses and events coming up. [gpchq.co.uk](http://gpchq.co.uk)

Our monthly guide to the visual arts in the Cheltenham area.

Published by ARTEbulletin, hello@artebulletin.co.uk

Watch This Space  
[Wtscollective.co.uk/shop](https://wtscollective.co.uk/shop)

**Creative workshops** on the beautiful grounds at The Community Hub, Sue Ryder, Leckhampton Court  
**Recharge, relax and enjoy!**

**Friday 12 Sept, 10am – 12.30pm**  
**Bowl of Light hand build your own ceramic vessel. £70**

**Friday 3 October, 10am - 4pm**  
**Willow Basket Weaving Workshop**  
**£70 2 spaces left**



Our evening session at **Hatchards Bookshop** return

**Tues 7 October, 6.30 – 9pm.**  
**Animal Ceramics – create your own mini version of your dog or cat, £65pp**



Visit [wtscollective.co.uk/shop](https://wtscollective.co.uk/shop) for all the workshops coming up this year.

**21 September 11am - 4pm**  
**Next Makers Market – Dunkertons**

**Learning & Participation Hub,**  
**Gloucester Cathedral, St Mary's Gate,**  
**Gloucester, GL1 2QR**

**Sunday 31 August, 9:30am - 4pm**

**Medieval Book Binding: Limp Binding - a modern interpretation, £85**

Join experienced tutor Magalie from Brilliant Magpie Bookbinding in this workshop set in the medieval

surroundings of the Learning Centre in St Marys Gatehouse.

At the end of the day, you will have your own bound notebook to take home.

In this workshop, Magalie will guide you through the making of a medieval book binding, replicating many of the books found in our own Medieval Library. You will create your own 14th century style binding, using modern materials.

To book visit the Gloucester Cathedral website.

<https://gloucestercathedral.artsvp.com/74dd68>



Our monthly guide to the visual arts in the Cheltenham area.

Published by ARTEbulletin, hello@artebulletin.co.uk

**THE YARD**

Upper Bath Street, Cheltenham  
[theyardartspace.com](http://theyardartspace.com)

the **yard:ARTspace** offers a focal point for those who want to make printmaking an important part of their creative process.

**NEW 10-week AUTUMN TERM COURSES are on the website, starting 24 Sept**

**Simple Artist books with Mixed Media Techniques.**

**10am -12.30pm.** £200. **1 Place left** includes most materials.

**Friday 26 September PAPER LITHOGRAPHY ON FABRIC**

Using basic photocopies as a printmaking plate, explore paper lithography for the day on fabric. Get to grips with this flexible process and print on a variety of textile surfaces. Create a stash of samples to use in your fabric projects.

**Cost £100** to include most materials. Bring black and white photocopies.

All details can be found at [theyardartspace.com](http://theyardartspace.com) or email [suebrown@theyardartspace.com](mailto:suebrown@theyardartspace.com)



**Nicky Millington**  
 The Art Studio  
[cheltartstudio.com](http://cheltartstudio.com)

**Art Classes – looking to book something for the Autumn term ...**

**Children’s Art Club –**

<b>Tues -</b>	<b>Yr 6-9</b>	<b>5 - 6.30pm</b>
<b>Wed -</b>	<b>Yr 5-6</b>	<b>5 - 6.30pm</b>
<b>Thurs -</b>	<b>Yr 5-6</b>	<b>5 - 6.30pm</b>

The classes cost **£18** each for the older children. Payment is made for the course of 6 or 7 weeks.

**Adults:**

**All in studio** on Tuesdays, Wednesdays, Thursdays and Fridays  
**10am - 12pm**

New: Thursday afternoon – **1 - 3pm**

Classes are **£20** per session, paid for as a course in one payment.

For more information and how to book, for your Autumn classes, please visit:  
[www.cheltartstudio.com](http://www.cheltartstudio.com)

The Art Studios art classes give adults and children the opportunity to discover and develop their creativity, increasing their skills of observation and application of a wide range of different media.



Our monthly guide to the visual arts in the Cheltenham area.

Published by ARTEbulletin, hello@artebulletin.co.uk

**Art Classes**

**Alexandra Woods**

**Classes** - Whether you are at the beginning of your art journey or would like some companionship and guidance along the way, new art classes are coming up. Make discoveries and achieve in a friendly and welcoming setting.

**At Cheltenham Art Club Studios, Normandy House, GL50 3HW.**

**Tuesdays 14.00 - 16.30**  
**23 September - 28 October 2025**  
 An Introduction To Painting And Drawing Course **£130**

-----  
**Ritual Coffee Brew Bar and Kitchen, Unit 31 - 32, Lansdown Industrial Estate, Cheltenham, GL51 8PL.**

**Wednesday Painting With Colour**  
**Wednesday 24 September, 3 - 5pm**  
**£30**  
 Or  
**( All Four, 15 October, 19 November and 3 December 2025)**  
**£110**

**Saturday Portrait Drawing Workshop**  
**Saturday 27th Sept, 10am - 4pm**  
**£75**  
 Or  
**All Four, Saturday 18 October, 22 November and 6 December 2025,**  
**£280**

All materials and equipment will be provided. To book please visit:  
**alexandrawoods.com/classes**

**ALEXANDRA WOODS** 

**Workshops**

**Nicky Harvey Workshops**  
**ARTWORKS 2025 Workshops**  
**Various locations**

**8 August, 1.15-3.45pm**  
**Colour mixing masterclass with Nick Dawe**  
**at Highbury church Hall in Cheltenham £35.**

A 2-and-a-half-hour masterclass getting to grips with colour mixing, including those difficult greens.  
**4 SPACES LEFT**

**16 August, 10-4pm - The value of underpainting and colour theory workshop with Nick Dawe**  
**at The Redding's Community Centre in Cheltenham £65.**

Whatever medium you work in don't underestimate the value of underpainting and learning colour theory.  
**4 SPACES LEFT**



For more information on all other workshops coming up call

**Nicky Artworks 07531 837045**

Or visit

**artworks-glos.co.uk**



Our monthly guide to the visual arts in the Cheltenham area.

Published by ARTEbulletin, hello@artebulletin.co.uk

## Pete Garrard Ceramic Courses

### AUTUMN CERAMIC COURSE 15 September to 12 December (with a three week break from 18 October to 9 November)

A ceramic-hand-building course, with a wide range of sculptural or functional projects that I can use to guide the complete beginner through a variety of basic techniques. More experienced artists are supported in the development of their own projects.

**Classes are limited to a maximum of 10** and Pete encourages his students to develop their own style and interests. Pete is a professional tutor with extensive experience in secondary and further education and a practising artist and sculptor (1st class BA hon). You can choose from the following days and times:

**Mondays: 5.45 - 9.15pm**

**Thursdays: 1 - 4.30pm**

**Fridays: 9.30am - 1pm**

You can have 3.5 hours per session which gives you plenty of time to be creative and enjoy a cuppa and cake or biscuits during our break.

**The 35 hour / 10 week course costs £320 tuition\***

You can see the work of myself and my students: [@petegarrard](#) or FB [@Peter Garrard Ceramics](#)



The Studio Peter Garrard  
artist & teacher

## Gas Green Community Centre Baker Street, Cheltenham GL51 9HQ

### Art for All .. art for wellbeing

Art groups for adults with a mental health condition, suitable for all levels of experience. Please note that four of our groups are accessible, denoted \*

#### Varied Locations

**Wednesday 1-4pm** Nature inspired Drawing and Painting outside\*

Varied Locations This group goes to different 'green' locations to draw and paint nature and landscape

**Wednesday 1-4pm** Photography\*  
As above

#### Gas Green

AFA Art Room : **Thur 10am - 12pm**  
Painting and Drawing\* . This is a general art group, painting and drawing

Community Room **Thur 12.30 -2.30pm**  
Painting and Drawing\* This is a general art group, painting and drawing

AFA Art Room **Thur 2.30-4.30pm**  
Women's Group. This is General Art group for women

AFA Art Room **Friday 10am-12pm.**  
Quiet Group. A general painting and drawing group, suitable for people with an additional neurodiverse condition

AFA Art Room - **Friday 12.30-2.30pm**  
Printmaking. A general printmaking group using safe techniques

Community Room **Friday 2.30-4.30pm**  
Mindful and Social Craft\* This is a varied arts and craft group

**For all detail: [artforallgroup.co.uk](http://artforallgroup.co.uk)  
[artforallgroup@outlook.com](mailto:artforallgroup@outlook.com)**

Our monthly guide to the visual arts in the Cheltenham area.

Published by ARTEbulletin, hello@artebulletin.co.uk

## CHELTENHAM ARTS NETWORK

Enabling artists to create opportunities and address challenges facing practitioners in the town through meetings, events and sharing information. Created to support the ecology of artists and producers in the Cheltenham area.

To keep up to date, on the next event, **including the next social in September**, please visit FB: **Cheltartsnetwork**



## Create Gloucestershire creategloucestershire.co.uk

**CREATE GLOUCESTERSHIRE** supports the cultural and creative industries in Gloucestershire and introduces new people to arts, culture and creativity.

After a website refresh, you'll find the **programmes** they are working on directly accessible from the drop-down tab in the navigation. Also added is clearer signposting to all the resources they have to share - such as **job and volunteering opportunities** and **ideas for getting into creative careers**.

Visit the website for more information, opportunities and support:

**creategloucestershire.co.uk**

## PEGASUS ART SHOP

Griffin Mill, Thrupp, Stroud, GL5 2AZ.  
[www.pegasusart.co.uk](http://www.pegasusart.co.uk)

### PEGASUS ART - Passionate Artists Serving the Artistic Community.

An outstanding collection of art materials and supplies for both amateur and professional artists worldwide. Pegasus art specialise in fine art papers, museum quality stretcher bars and make bespoke canvases to order. You can shop online, by telephone and click and collect. Visit the website for info.

For further information on all products plus courses and workshops available,

please visit: [pegasusart.co.uk](http://pegasusart.co.uk)



Our monthly guide to the visual arts in the Cheltenham area.

Published by ARTEbulletin, hello@artebulletin.co.uk

**The Arts Society, Cheltenham**  
[theartssocietycheltenham.org.uk](http://theartssocietycheltenham.org.uk)

**The Arts Society breaks for the summer – next lecture**

**Tuesday 9 September 7.15pm**  
 The Pavilion, Hatherley Lane,  
 Cheltenham GL51 6PN

**Banksy: Fraud Or Genius?**  
**Pepe Martinez**

The lecture will trace the story of Banksy’s humble beginnings as a tagger on the streets of Bristol in the 1980’s to one of the most recognisable names in the art world. We will examine the reasons behind his incredible rise, looking at some of his famous stunts and discuss what his influence has been on the art market today and look at what his legacy, if any, might be.



This lecture is free to members and visitors are always welcome for a fee of **£8**.

For more information and to attend either of these events contact [info.cheltenham@theartssociety.org](mailto:info.cheltenham@theartssociety.org)

**Cafe Arts** - regular Social Coffee Morning meet up again in September.

**History of Art Lectures**

**Wednesday evenings, 6 – 7pm**  
**2 weeks £30**

**The Green Room in The Painswick Centre GL6 6QQ.**

**History Of Art Lectures**  
**Double Acts With Sarah Middleton**

Enjoy two consecutive Wednesday evenings exploring famous double acts in the history of art. be that artist husband and wives, contemporaries or rivals. join our curious, fun and informative group for an hour-long powerpoint presentation with time for discussion and sharing our passion for art.

**3rd Sept & 10th Sept:** Lee Krasner & Jackson Pollock

**1st Oct & 8th Oct:** Frida Kahlo & Diego Rivera

**5th Nov & 12th Nov:** Van Gogh & Gauguin In Arles

**3rd Dec & 10th Dec:** Jane Morris & Dante Rossetti

**Book online at :**

[sarah-middleton.co.uk/shop/history-of-art-classes](http://sarah-middleton.co.uk/shop/history-of-art-classes)

Or contact Sarah on 07990 587967 / [sarah@sarah-middleton.co.uk](mailto:sarah@sarah-middleton.co.uk)



Our monthly guide to the visual arts in the Cheltenham area.

Published by ARTEbulletin, hello@artebulletin.co.uk

## TOURIST INFORMATION CENTRE

### NEW TOURIST INFORMATION CENTRE TO OPEN IN CHELTENHAM

A brand-new Tourist Information Centre is set to open its doors on **Monday 4th August** at the Promenade entrance to Cavendish House, offering a warm welcome and helpful guidance to visitors exploring Cheltenham.

Staffed entirely by dedicated volunteers, the centre will operate **Monday to Saturday from 10am to 5pm**. The centre is the brainchild of Sue Oscroft, a former Cheltenham B&B owner, and her husband Patrick Oscroft, a retired marketing manager. Their vision was born from frequent requests from tourists for a friendly, face-to-face source of local information.

The initiative is proudly sponsored by Fuddlecups Café, who are based in Cavendish House.

Sue Oscroft, co-founder of the new tourist information centre, said: "We're absolutely thrilled to be opening this new Tourist Information Centre in the heart of Cheltenham. Visitors have often told us how much they value a friendly face and local knowledge when exploring a new place, and we're proud to be able to offer just that. This is about giving something back to a town we love and supporting the many brilliant businesses that make Cheltenham such a special destination."

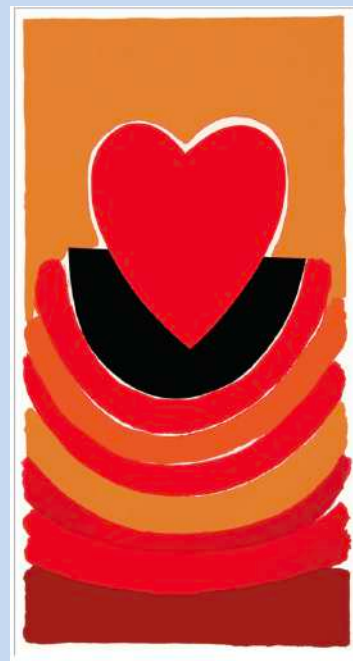
For further information, contact:

[admin@cheltenhamtouristcentre.info](mailto:admin@cheltenhamtouristcentre.info)

## Support the ART Bulletin

### Become a supporter

The **ART ebulletin** has always been a free resource for artists, arts organisations and art lovers alike. It champions all forms of visual art locally, commercial or not. We don't charge for advertising, as we think it should remain an independent directory that is available to all. As its popularity grows so does the time it takes to pull it together. If you value it, are able and would like to help support the cost of producing it each month, then **please consider giving an annual donation and help keep this valuable resource viable**.



Simply visit :

[paypal.me/artebulletin](https://paypal.me/artebulletin)

- enter your amount and press send,

alternatively, email:

[hello@artebulletin.co.uk](mailto:hello@artebulletin.co.uk) and we can send out further details.