

# CHEL TENHAM ART eBULLETIN

Your monthly guide to  
the visual arts in the  
Cheltenham area  
**DECEMBER 2025**

Cover image - Cath Chamberlain



Our monthly guide to the visual arts in the Cheltenham area.

Published by ARTEbulletin, hello@artebulletin.co.uk

## Lansdown Art Studios Christmas Exhibition

**Friday 28th November, 4pm–8pm  
Saturday 29th & Sunday 30th  
November, 10am–5pm**

### Lansdown Art Studios – Christmas Exhibition

#### Lansdown Art Studios

Unit 1A Lansdown Industrial Estate  
Gloucester Road  
Cheltenham GL51 8PS

Cheltenham's largest independent art exhibition and open studios!  
They are — bigger and better than ever. Explore over 500 artworks for sale and meet our talented local artists, all under one roof.

It's more than just an exhibition — discover mosaics, prints, cards, jewellery, and unique gift ideas, all inside our quirky and creative studio building.

Free entry & free parking — everyone welcome!



## Christmas MARKETS

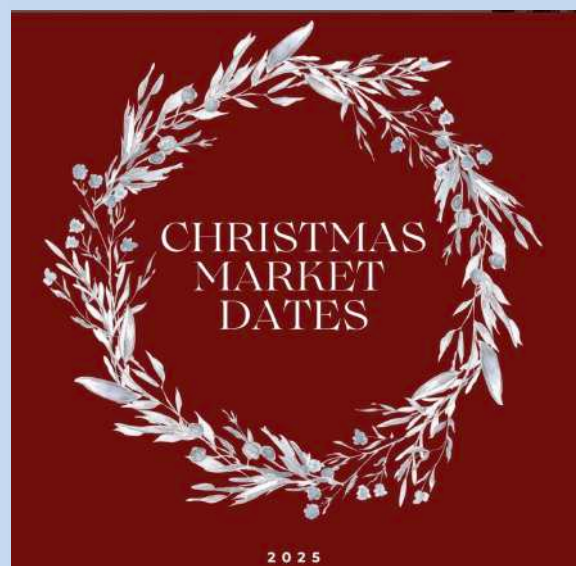
### Join Watch This Space for their Annual Christmas Artisan Craft Markets

Thoughtfully curated events offering gorgeous, handcrafted artisan products - and an opportunity to meet the makers, come and say hi and chat to them about their craft.

With an array of fantastic products from cards, stocking fillers and festive decorations to jewellery, ceramics, glass, prints, textiles, handmade chocolates, natural, organic beauty and wellbeing products, luxury dog accessories and more. An ideal place to find the perfect gift for friends and family.

There are different makers at different venues so please come along and say hello or follow us [@wtscollective](#)

**6 December 10 - 4pm at Dunkertons  
7 December 12 - 5pm at DEYA  
14 December 10 - 3pm at Ritual  
Coffee Roasters,**



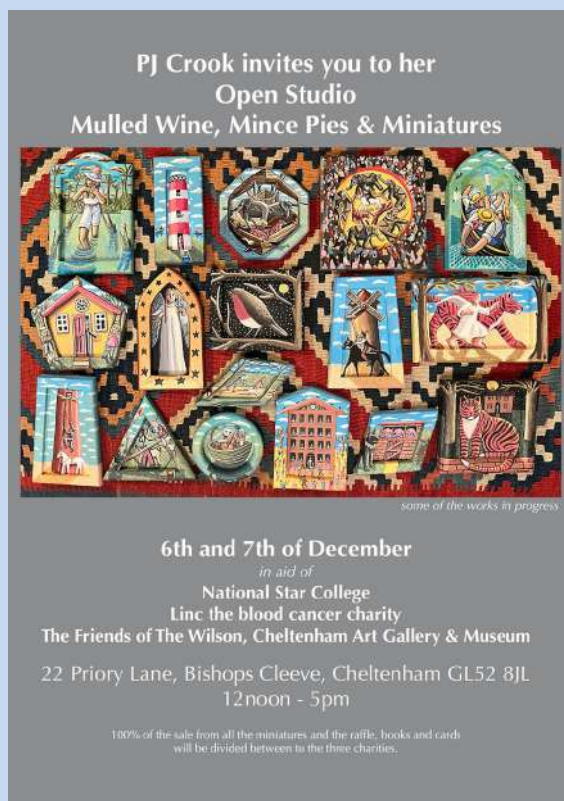
Our monthly guide to the visual arts in the Cheltenham area.

Published by ARTEbulletin, hello@artebulletin.co.uk

**PJ Crook  
OPEN STUDIOS  
22 Priory Lane, Bishops Cleeve,  
Cheltenham GL52 8JL**

**6 and 7 December, 12 – 5pm**

**PJ Crook, Open Studio  
Mulled Wine, Mince Pies &  
Miniatures**



**In aid of:**

- National Star College
- Linc the blood cancer charity
- The Friends of The Wilson, Cheltenham Art Gallery & Museum

**100% of the sale for all the miniatures and the raffle, books and cards will be divided between the three charities.**

**Papyro Studios is 3  
3 The Studios, Royal Well Place  
Cheltenham GL50 3DN  
info@papyrostudio.com**

**Saturday 6 December, 10am – 3pm  
Join us for a glass of mulled wine  
and a mince pie and pick up some  
Christmas gift goodies!**

**Opening times:  
Thursday - Saturday 10-3 pm  
(look out for December increased  
hour updates on Instagram)**

**@papyro\_studio**

**Papyro Studio is 3!  
Art, Stationery, Books, Gifts & Prints**

Come and see their selection of carefully curated prints from a variety of artists as well as original art and prints from local artists and illustrators.





Our monthly guide to the visual arts in the Cheltenham area.

Published by ARTEbulletin, [hello@artebulletin.co.uk](mailto:hello@artebulletin.co.uk)

**Pots, Paintings and Pearls in Purple.**

An exhibition in aid of  
Pancreatic Cancer

**Charity Evening**

**Friday 5 December, 6 - 8pm**

**RSVP**

**[Kate@katharinedove.co.uk](mailto:Kate@katharinedove.co.uk)**

**Exhibition continues**

**6 December 11am - 4pm**

At: Orchard House, Noverton Lane,  
Cheltenham GL52 5DD  
(top Noverton Lane just past Desert  
Orchid Close)

**Pots, Paintings and Pearls in Purple.**

An exhibition in aid of Pancreatic  
Cancer. A colourful exhibition of  
paintings, pots and pear jewellery to  
raise money and awareness. Featuring  
works from Katharine Dove, The  
Painswick Potter and other artists.

There will be a raffle of original art and  
Christmas cards too.

**Gloucestershire Guild**

18 Rotunda Terrace, Montpellier Street  
Cheltenham GL50 1SW  
[guildcrafts.org.uk](http://guildcrafts.org.uk)

**Shop Open**

**Monday - Saturday 10am - 5pm and  
4pm on Christmas Eve**

**Christmas Decorations to Show Off**

- The Guild have got so many unique  
and beautiful Christmas decorations in  
their shop in Cheltenham. From  
feathers to clementines, snowflakes to  
trees in blues and oranges, whites and  
green, handmade in ceramics, glass,  
textiles and more!

Come and choose your new tree  
decoration for 2025 and show it off  
with pride.



The online Christmas shop is now  
OPEN with plenty of ideas for friends,  
family, teachers or yourself.

**[guildcrafts.org.uk](http://guildcrafts.org.uk)**

Our monthly guide to the visual arts in the Cheltenham area.

Published by ARTEbulletin, [hello@artebulletin.co.uk](mailto:hello@artebulletin.co.uk)

### Gardens Gallery

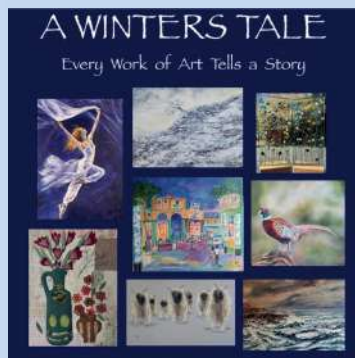
Montpellier Gardens,  
Cheltenham GL50 2XL  
[Gardensgallery.co.uk](http://Gardensgallery.co.uk)

#### 26 Nov - 2 Dec

**Into the Light** Joanne Cope is known for her dramatic portraits of cattle, stags and her stunning equine art..

#### 3 – 8 December. Late night Saturday 6 December, open until 7.30pm.

**A Winter's Tale** Every work of art tells a story. Eight individual and passionate creatives exhibiting a beautiful variety of original Art, Fused Glass and Textiles. The perfect gift for the festive season.



#### 10 – 16 December. Come along to the open evening: Thursday 11 December 6 - 8pm.

**Art For All Showcase** - Come and learn about the work that your local mental health charity does. Meet the team and see their artists in residence at work. For more information visit [artforallmeantlahealth.org.uk](http://artforallmeantlahealth.org.uk)



### Gardens Gallery

Montpellier Gardens,  
Cheltenham GL50 2XL  
[Gardensgallery.co.uk](http://Gardensgallery.co.uk)

#### 18 – 23 December

**Open 10am - 6pm daily,  
23 December, 10am - 1pm.  
Meet the artists, Saturday 20  
December. 12 - 6pm.**

**Wild** - Landscape painter Kim Jarvis and Scottish artist Kerry Phippen bring together a new collection of paintings and drawings. In search of the most wild, remote and beautiful coastlines of Britain, with a particular passion for Scotland's islands, much of their work is painted or sketched on the spot. This achieves a true sense of the experience of being in a place at a particular moment.



#### 17 - 18 January 2026

#### Cheltenham Young Artist 2026

50 pictures selected by the judges plus the winning entries from this fantastic competition will be on display.

For all the information visit:  
[gardensgallery.co.uk](http://gardensgallery.co.uk)

**gardensgallery**

Our monthly guide to the visual arts in the Cheltenham area.

Published by ARTEbulletin, hello@artebulletin.co.uk

### Spring Cheltenham

14 Rotunda Terrace, Montpellier Street,  
Cheltenham, GL50 1SW  
[Springcheltenham.com](http://Springcheltenham.com)

**.. until 2 December**

**Open 10am - 5pm. Tues, 10am -1pm**

**ESSENCE - Teresa Poole**



**3 – 8 December, daily 10-5pm**

**Christmas drinks:**

**Saturday 6 December, 4pm – 6.30pm**

**Helen Arthur and Corisande**

**Albert** celebrate their creative friendship and mutual admiration for their practices in painting, printmaking and ceramics.



**10 -16 December**

**Over The Hedgerow**

Belinda Millar & Eleanor Woolley



**17 - 23 December - Pete Phipps**

For opening times, and information on all exhibitions coming up please visit.  
[springcheltenham](http://springcheltenham)

### Sixteen Gallery

16 Rotunda Terrace, Montpellier Street,  
Cheltenham, GL50 1SW  
[sixteengallery.com](http://sixteengallery.com)

**27 November - 10 December**

**Stroud Artists At Sixteen**

**The SAC Select Winter Exhibition**

Features Steve Vanstone, Ewen Hyde, Abigail Waddell, Chris James, Clare Hines Jane Cunningham, Mick Mills, Nigel Calvert, Mike Skinner and Gill Cox.

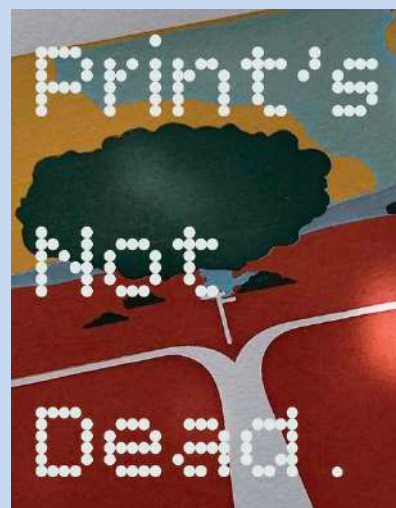


**11 - 18 December**

**Late Night Opening | Thursday 11**

**& Thursday 18 December Until 8pm**

**Print's Not Dead** - From Traditional Printmaking To Contemporary Giclée Works, Print's Not Dead Brings Together A Diverse Mix Of Artists For An Open Exhibition Dedicated To The Art Of Print.





Our monthly guide to the visual arts in the Cheltenham area.

Published by ARTEbulletin, hello@artebulletin.co.uk

**The Wilson Art Gallery and Museum**  
Clarence St, Cheltenham GL50 3JT  
[cheltenhammuseum.org.uk](http://cheltenhammuseum.org.uk)

Tuesday to Saturday 10am to 5pm,  
Sunday 10am to 4pm.  
The Wilson Kitchen is open  
Mon – Sat 10am - 5pm, Sun 10 - 4pm

.. until 11th January 2026

### Material Worlds:

Contemporary Artists and Textiles  
Explores how artists are using textiles in surprising and radical ways. Illuminating the diverse roles textiles play in contemporary artistic practice, the exhibition brings together artists who take the intimate, every day and domestic quality of textiles and transform them into theatrical, bold, unsettling and humorous artworks that create worlds and tell stories ranging from the personal to the cosmic.

Curated by artist Caroline Achaintre with Hayward Gallery Touring, the exhibition will feature work created predominantly over the last decade by 15 UK-based artists.



For information on all other exhibitions and events please visit the website:  
[cheltenhammuseum.org.uk](http://cheltenhammuseum.org.uk)

**The Wilson Art Gallery and Museum**  
Clarence St, Cheltenham GL50 3JT  
[cheltenhammuseum.org.uk](http://cheltenhammuseum.org.uk)

**Wednesday 3 December, 6pm - 9pm**  
**Free Entry**

**Wilson Nights:**  
**Alternative Christmas Art Fair**  
One night. All vibes. No clichés.

Live DJ sets. Makers Market. Demos.  
Weird, wonderful, one-off stuff.

Art, fashion, prints, sounds + more  
from the boldest creatives around.



Wilson Nights is a vibrant, free monthly event held at The Wilson on the first Wednesday of each month. These evenings are designed to celebrate creativity and community through a diverse array of artist-led activities and performances. Every event is different, with a number of regular workshops to get involved in, led by our resident community groups.

Keep up to date with what's going on  
via Instagram - [@thewilsonchelt/](https://www.instagram.com/thewilsonchelt/)

Our monthly guide to the visual arts in the Cheltenham area.

Published by ARTEbulletin, [hello@artebulletin.co.uk](mailto:hello@artebulletin.co.uk)

**Elwes Gallery**

Main Reception

Park Campus

Cheltenham GL50 2RH

[glos.ac.uk/goat/](http://glos.ac.uk/goat/)

**5 - 22 December 2025, 8am - 5pm**

The exhibition will be a celebration of creativity by artists of all ages and backgrounds across Gloucestershire responding to the **G.O.A.T (Greatest of All Time) theme**.

The art show will be exhibited first at Park Campus at the Elwes gallery where visitors will see how investment is delivering a vibrant Creative Campus, benefiting from new studios, workshop spaces and other specialist facilities.

The art show will then tour to City Campus, giving members of the public the opportunity to see inside the stunning new facilities in the former Debenhams department store that have transformed the building into a cutting-edge centre for teaching and learning.



For more information, please visit [glos.ac.uk/goat/](http://glos.ac.uk/goat/)

**The Paragon Gallery**

4, Rotunda Terrace, Montpellier St,  
Cheltenham GL50 1SW

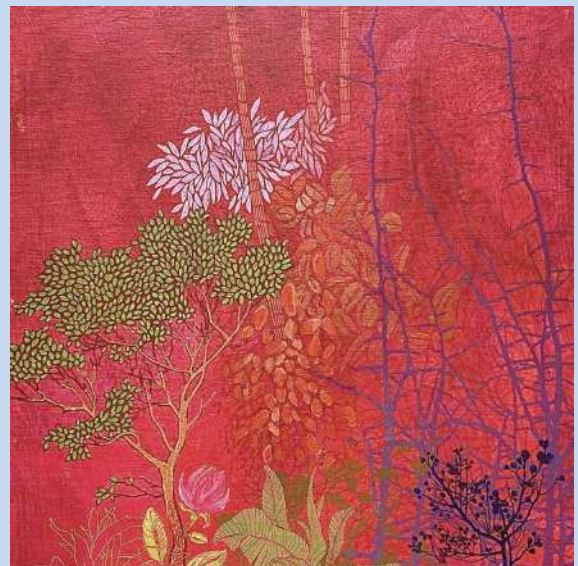
[paragongallery.co.uk](http://paragongallery.co.uk)

**6 – 27 December, 10am – 5pm**

**Works Under £500 - A special seasonal showcase** - An exhibition of original artworks, including prints, paintings, ceramics and glass, all priced under £500, perfectly timed for thoughtful, affordable Christmas gifting.

They're also thrilled to welcome new gallery artist **Chitra Merchant**; a Bristol-based fine art printmaker and painter whose evocative landscapes and hand-drawn screen-prints celebrate the natural world. Featuring beautiful works by Chitra alongside our diverse portfolio of emerging and established talent, this show invites you to discover something unique and meaningful for your loved ones (or yourself) this festive season.

Featured works will be available to view on the website ahead of the show. A link will be added here in early December. Visit the website for more information [paragongallery.co.uk](http://paragongallery.co.uk)





Our monthly guide to the visual arts in the Cheltenham area.

Published by ARTEbulletin, [hello@artebulletin.co.uk](mailto:hello@artebulletin.co.uk)

**Holst Victorian House**  
4 Clarence Road,  
Cheltenham, GL52 2AY  
[holstvictorianhouse.org.uk](http://holstvictorianhouse.org.uk)

... On until 31 December  
Free with admission  
**New Exhibition:**  
**From Bombs to Bellbottoms**

What was Holst Victorian House like before it was a museum? To celebrate 50 years since it opened its doors to the public, the museum has transformed the Maid's Sitting Room and Victorian Bedroom into two striking 20th-century room sets as part of a new temporary exhibition,

See what life was like for the Doxseys in their basement parlour during the Second World War. Step into a 1970s fashion student's bedroom and imagine life at the Gloucestershire College of Art and Design on the nearby Pittville Campus. With objects on loan from Gloucester Museum and The Wilson, together with items lent by the public, the rooms are stimulating portals into the past, rich with memory and conversation points.

A specially designed newspaper is on hand to guide visitors around these immersive spaces, and content is also available on the museum's Bloomberg Connects app, including an interview with 97-year-old Yvonne Ebdon, who lived nearby during the Second World War.



**The Gate Art Space**  
21 Westgate Street  
Gloucester

**2 – 7 December, 10.30 -5.30pm**  
**Bold and Beautiful Threads**

Join **Magalie**, from **Brilliant Magpie Bookbinding** for her first solo exhibition. Be ready to be *dazzled*.

Magalie will also be demonstrating offering £10 drop-in-sessions within the opening hours, for you to make a notebook to take home.



For enquiries about booking and availability of this new space, plus prices and floor plans, please email

[contact@gloucestercontemporaryartists.art](mailto:contact@gloucestercontemporaryartists.art)

or visit:

[gloucestercontemporaryartists.art](http://gloucestercontemporaryartists.art)

Our monthly guide to the visual arts in the Cheltenham area.

Published by ARTEbulletin, [hello@artebulletin.co.uk](mailto:hello@artebulletin.co.uk)

### New Brewery Arts

Brewery Court  
Cirencester GL7 1JH  
[newbreweryarts.org.uk](http://newbreweryarts.org.uk)

9am to 5pm Monday;  
10am to 5pm Tuesday;  
9am to 5pm Wednesday to Saturday

Until ... 3 January

**JOY!** is a celebration of everything crafted for the season. Spread throughout the shop and gallery they bring you work by hundreds of UK craftspeople.

From exquisite homewares to make your space truly special to cards from illustrators and designers to handmade gifts for everyone - we have just the thing.



Please visit the website for information on all other events and workshops.  
[newbreweryarts.org.uk](http://newbreweryarts.org.uk)

*New Brewery Arts* | CIRENCESTER

### Nature in Art Museum & Art Gallery

Main A38 Twigworth  
Gloucester GL2 9PA  
[natureinart.org.uk](http://natureinart.org.uk)

Opening times: Tuesday - Sunday (& bank holidays) 10am - 5pm

.. until 21 December

**FRESH** - This selling exhibition of contemporary crafts draws inspiration from the urgent themes of the UN's International Year of Glaciers' Preservation. The works celebrate the beauty of glaciers, polar regions, ice, snow, and water; life-giving and fragile. Exhibits range from ceramics, wood, glass, jewellery, enamels, prints and more.

Amongst the makers represented are Colin See-Paynton (wood engravings), Amanda Lawrence (glass) Carole Bury (mixed media), Robert Cox (wood), Nigel Calvert (glass), Avril Farley (ceramics, right above), Grahame Tucker (wood), Siddy Langley (glass), Ben Venuto (printmaking), Linda Heaton-Harris (ceramic sculpture), Paul Hannaby (wood), Sarah Kinnersley (jewellery), and Grant Sonnex (Furniture and ceramics) .



Visit the website for more information.  
[natureinart.org.uk/](http://natureinart.org.uk/)



Our monthly guide to the visual arts in the Cheltenham area.  
Published by ARTEbulletin, hello@artebulletin.co.uk

**Little Buckland Gallery**  
Little Buckland  
Broadway WR12 7JH  
[littlebucklandgallery.co.uk](http://littlebucklandgallery.co.uk)

### Christmas Giveaway

The latest instalment of this popular event.

Sign up to the gallery newsletter for an opportunity to win one of three pieces of art each to the **value of £200**.  
Email: [littlebucklandgallery.co.uk](mailto:littlebucklandgallery.co.uk)



**.. until 22 December**  
**Open Friday to Monday 11 - 4pm**  
**or by appointment outside these times**

**EMBER** - Lots of wonderful ideas for presents from small ceramics to large statement pieces. Christmas Present discount for new buyers.



Visit the website for more information:  
[littlebucklandgalelry.co.uk](http://littlebucklandgalelry.co.uk)

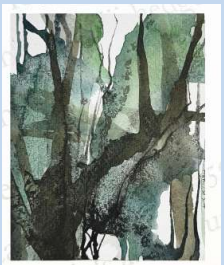
**Ruskin Gallery**  
Nailsworth, GL6 0LA

**24 November – 22 December**  
**Free admission**

### Margins

**At the edge of the natural world**

An exhibition of works by Jo Biggadike, Carol Honess, Roy Hubbard, Andrew Morrison, Julie Smith, Shelley Winnett



Our monthly guide to the visual arts in the Cheltenham area.

Published by ARTEbulletin, hello@artebulletin.co.uk

Watch This Space  
[Wtscollective.co.uk/shop](http://Wtscollective.co.uk/shop)  
 @wtscollective

### FESTIVE workshops now ONLINE

From **wreath making, a festive candle pouring experience and ceramic Christmas decorations**, there is a host of artisan Christmas creative workshops to come and enjoy and get you preparing for the season with our early bird dates or something to kickstart festivities.



Come with friends, or as a solo creative. Expert makers, gorgeous seasonal craft and makes and daytime or evening options.

**2 Dec 6.30-8.30pm**  
**Hanchard's Bookshop Cheltenham**

**5 Dec, 10-12.30pm**  
**Sue Ryder Community Hub**

Visit [wtscollective.co.uk/shop](http://wtscollective.co.uk/shop) for all the details

### A small batch of 2026 Workshops are now in the shop

Ceramic animal sculpture sessions and woodcarving workshops to enjoy.

The Arty Crafty Bunch  
[theartycraftybunch.com](http://theartycraftybunch.com)

### At Como Blend, 2 Station Mews, Old Station Drive, Leckhampton

**Creative Coffee.** Nurture your creative side with a chance to natter Painting, crafting, drawing No artistic experience necessary. **£12** a session inc all materials and artisan coffee. **Every Monday, 1 - 2.30pm,**

**Monday 1 December** - Mini Rag Christmas Trees

### Arty Crafty Evenings – Thursday 4 December 2.30-5.30pm Luxury Christmas Wreath Making

Make a very special Christmas Wreath of your own and enjoy a mug of mulled wine and warm mince pie while you are creating. **£45** All materials are provided- if you have your own secateurs these will be useful. Likewise, if you have greenery in your garden you would like to include, do bring it along.



For more information on current sessions and to book visit [theartycraftybunch.com](http://theartycraftybunch.com)  
 Or email **Sarah** at [theartycraftybunch@gmail.com](mailto:theartycraftybunch@gmail.com)



Our monthly guide to the visual arts in the Cheltenham area.

Published by ARTEbulletin, [hello@artebulletin.co.uk](mailto:hello@artebulletin.co.uk)

**Cheltenham Fine Art Studios**

32 Wellington Lane  
Cheltenham, GL52 2AG  
[cheltfineart.co.uk](http://cheltfineart.co.uk)

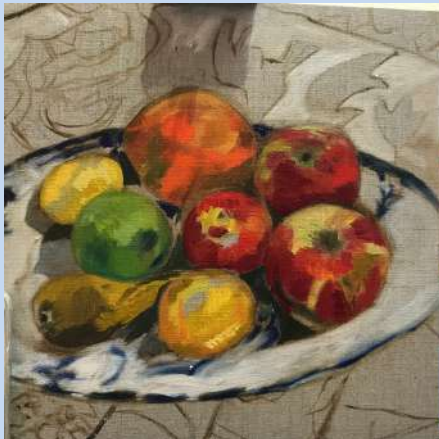
**CheltFineArt Studios** - Come and try your hand at one of the taught weekend workshops including materials and are suitable for levels of ability and experience. These are adult workshops.

**Life Drawing Workshop**

**Saturday 24 January, 10-4pm, £80**

Tutored life painting and drawing class. Ideal for those wanting to learn and improve or for beginners who would just like to have a go. Working from life with a live model.

**Impressionist Still Life Workshop,  
Saturday 28th February, 10-4pm £75**

**Untaught Sunday Life Drawing.**

**Sunday 1 Feb 10-1pm £26**

Join us for a Life drawing class! A lovely relaxed and informal session - a chance to really immerse yourself and take your time to draw or paint from a live model.

Booking online at [cheltfineart.co.uk](http://cheltfineart.co.uk)

**Art Classes**

**Alexandra Woods Classes** - Whether you are at the beginning of your art journey or would like some companionship and guidance along the way, new art classes are coming up. Make discoveries and achieve in a friendly and welcoming setting.

-----  
**Ritual Coffee Brew Bar and Kitchen,  
Unit 31 - 32, Lansdown Industrial  
Estate, Cheltenham, GL51 8PL.**

**Wednesday Painting With Colour  
Wednesday 3 December - 5pm £30  
(Plus 3 Dec)**

**Saturday Portrait Drawing Workshop  
6 December, 10am - 4pm. £75**



All materials and equipment will be provided. To book please visit:  
[alexandrawoods.com/classes](http://alexandrawoods.com/classes)

ALEXANDRA WOODS 

Our monthly guide to the visual arts in the Cheltenham area.

Published by ARTEbulletin, hello@artebulletin.co.uk

## THE YARD

Upper Bath Street, Cheltenham  
theyardartspace.com

the yard:ARTspace offers a focal point for those who want to make printmaking an important part of their creative process.

**2026 courses and workshops are now LIVE**

**2026 - 23-25 January**

### SKETCHBOOK MASTER CLASS.

Includes paper lithography

**2 PLACES LEFT**

Kick start the New Year with creativity. Spend 3 days exploring the pages of a small sketchbook using ink, oil pastel, bleach, acrylic and paper lithography printmaking. **£320** to include a small sketchbook and most materials (Please bring strongly contrasting toner photocopies).

**Friday 6 February.**

### GELLI PLATE MONO PRINTING

Do you have a Gelli Plate and are looking for advanced techniques in using it? This one-day workshop will cover a variety of transfer techniques using magazines and wax, together with layering and over printing. **£100** to include paper and paint. Bring your own Gelli Plate and roller.

All details can be found at [theyardartspace.com](http://theyardartspace.com) or email [suebrown@theyardartspace.com](mailto:suebrown@theyardartspace.com) including 2026 workshops and courses



## Nicky Millington

The Art Studio  
cheltartstudio.com

**Art Classes – looking to book something for the New Year ...**

### Children's Art Club –

Tuesday Y7 - Y9 5 - 6.30pm

Wednesday Y6 - Y7 5 - 6.30pm

**£18 per week**, paid for in advance for a course of between 6 and 8 weeks.

### Adults:

- Tues, Wed, Thurs & Fri 10am – 12pm
- Thursdays 2 - 4pm

**£20 per week**, paid for in advance for a course of between 6 and 8 weeks.

The Art Studios art classes give adults and children the opportunity to discover and develop their creativity, increasing their skills of observation and application of a wide range of different media.



For more information and how to book, for your Autumn classes, please visit: [cheltartstudio.com](http://cheltartstudio.com)



Our monthly guide to the visual arts in the Cheltenham area.

Published by ARTEbulletin, hello@artebulletin.co.uk

## Art Classes

### Gemma Hastilow - Art Classes

**Weekly classes** in Winchcombe and Bishop's Cleeve.

#### CLASSES:

- **Mondays** - Life Drawing: Hone your drawing skills working from live models.
- **Tuesdays** - Art for beginners Unleash your creativity, learning all the basics.
- **Wednesdays** - Beginners Acrylic Painting:
- **Fridays** - Watercolours for Beginners

🎄 **Christmas Card Lino Printing Workshops** 🎄 £45 per person (including all materials, cards and tags and refreshments)

**Friday 5 Dece - 7.30pm - 10.30pm**  
- Abbey Fields Community Centre, Winchcombe

**Saturday 6 Dece - 2pm - 5pm**  
- The Tithe Barn, Bishop's Cleeve



For all info, including costs and how to book on the **2025** programme of **weekend workshops, weekly classes and more**, visit [gemmahastilow.co.uk](http://gemmahastilow.co.uk)

## GPC

Griffin Mill, Stroud  
[gpchq.co.uk](http://gpchq.co.uk)

**2026 courses NOW ONLINE** - with a variety of techniques & approaches, day courses and weekends available, there's something for everyone to try.

#### PLUS



#### Exhibitions at GPC:

**5 – 20 December** . Open: Monday to Saturday 11am – 2pm, or by appointment . Open eve Friday 5<sup>th</sup> December, with drinks and nibbles

**Tabitha Fedden & Christine Felce**  
**Mixed Media Prints and Print Demos**



Visit the website for all the detail, including other courses and events coming up. [gpchq.co.uk](http://gpchq.co.uk)

**Gas Green Community Centre**  
Baker Street, Cheltenham GL51 9HQ  
[artforallmentalhealth.org.uk](http://artforallmentalhealth.org.uk)

**Art for All Mental Health** is an Arts and Mental Health Charity. Art for All Mental Health has a new website and has an expanded range of groups.

Check it out at:  
[artforallmentalhealth.org.uk](http://artforallmentalhealth.org.uk)

They aim to help people achieve sustained mental well-being through the practice of being creative. Offering a variety of groups to take part in, these including: **general painting and drawing, nature journaling and photography, craft, mindful art, women's group and printmaking.**

All classes are facilitated by experienced Arts and Mental Health tutors and are free\* to attend. This includes materials, though you are welcome to bring your own ( a voluntary contribution is suggested to help towards refreshments and materials of **£2/class**).

### **NEW Men's Group**

**Wednesday, 10.30 - 12.30**

Men's group with art for wellbeing and creative woodworking.

To enquire/apply for a place in one of their groups please visit :

[artforallgroup.co.uk](http://artforallgroup.co.uk) or email  
[artforallgroup@outlook.com](mailto:artforallgroup@outlook.com)



**Gas Green Community Centre**  
Baker Street, Cheltenham GL51 9HQ  
[flowilde@hotmail.com](mailto:flowilde@hotmail.com)

### **Life drawing tutored session in Cheltenham**

**3rd Saturday of the month.**  
**10 – 12pm - £15 session**

**2025/26 Dates: (no Dec date)**

**New Year Dates - 17 Jan, 21 Feb, 21 Mar, 18 Apr, 16 May, 20 Jun**



**Tutor: Julie Smith** - This session is for any skills level, from novices to practicing artists, who want a supportive and stimulating environment in which to learn about the perceptions and mark-making capabilities required for making successful drawn responses from the nude figure. Julie comes with many years' experience working with artists, students and interested individuals.

### **What should you bring to the class?**

- Pencils & charcoal, & any materials you like to use,
- A2 cartridge paper pad, drawing board, masking tape, clip, sketchbooks etc.
- Erasers – plastic & putty rubber

We will be working with chairs rather than easels. You are welcome to bring your own easel if you have one.

e-mail Julie at [flowilde@hotmail.com](mailto:flowilde@hotmail.com)



Our monthly guide to the visual arts in the Cheltenham area.

Published by ARTEbulletin, hello@artebulletin.co.uk

## Workshops

### Nicky Harvey Workshops 2026 NOW LIVE

#### Cheltenham Workshops:

**17 January - 10-4pm**

**Mixed Media with Helen Norman** at Highbury Church Hall in Cheltenham  
**£65 7 SPACES LEFT**



**24 January, 10-4pm**

**Complete beginners watercolour workshop with Nick Dawe** at The Redding's Community Centre in Cheltenham **£65** plus if required a hire kit for £12. **5 SPACES LEFT**

For more information on all other workshops coming up call

**Nicky Artworks 07531 837045** Or visit [artworks-glos.co.uk](http://artworks-glos.co.uk)



## Nature Journaling

### Classes with Debbie Kersley

**Nature Journaling** is a gentle, creative practice of observing and recording the natural world. Through drawing, writing and noticing, we deepen our connection to nature and to ourselves. Everyone is welcome.

- Practice simple drawing & observation skills
- Create a personal record of the seasons
- Grow creativity and mindfulness.
- Slow down and notice more

**At Debbie's studio in Cheltenham (GL53)**, outdoors and online.

**Mondays 6:30-8:30pm**

**Tuesdays 10:30-12:30pm**

**Wednesdays 6:30-8:30pm**

#### Monthly 'Oak Hour' on Lotts

**Meadow:** Free/ Pay what you can. More outdoor 'Tree Hours' to be announced.

**4-week block: £60**

**Taster and half-term sessions: £15**

**Contact Debbie** to book a Taster session during a 4-week block.

Details and booking here:

<https://buytickets.at/debbiekersley>

[hello@debbiekersley.co.uk](mailto:hello@debbiekersley.co.uk)

**07971 106157**



Our monthly guide to the visual arts in the Cheltenham area.

Published by ARTEbulletin, [hello@artebulletin.co.uk](mailto:hello@artebulletin.co.uk)

### Cheltenham Arts Network

Enabling artists to create opportunities and address challenges facing practitioners in the town through meetings, events and sharing information. Created to support the ecology of artists and producers in the Cheltenham area.

To keep up to date, on the next event, **including the next social in the New Year**, please visit FB: **Cheltartsnetwork**



### Create Gloucestershire [creategloucestershire.co.uk](http://creategloucestershire.co.uk)

**CREATE GLOUCESTERSHIRE** supports the cultural and creative industries in Gloucestershire and introduces new people to arts, culture and creativity.

After a website refresh, you'll find the **programmes** they are working on directly accessible from the drop-down tab in the navigation. Also added is clearer signposting to all the resources they have to share - such as **job and volunteering opportunities** and **ideas for getting into creative careers**.

Visit the website for more information, opportunities and [creategloucestershire.co.uk/the-noticeboard](http://creategloucestershire.co.uk/the-noticeboard)

### Pegasus Art Shop

Griffin Mill, Thrupp, Stroud, GL5 2AZ.  
[pegasusart.co.uk](http://pegasusart.co.uk)

#### **Pegasus Art ... Passionate Artists Serving the Artistic Community**

Every member of Pegasus Art's friendly, knowledgeable and approachable team is a gifted artist. Through their passion and expertise, they have created an outstanding collection of art materials and supplies for both amateur and professional artists worldwide.

**Art Supplies - Everything You Need and More.** You will find an impressive range of art supplies including paints, brushes, varnishes, canvases and papers together with art equipment and accessories such as art books, portfolios, portfolio cases and those hard-to-find stretcher bars in lengths up to 3 meters. They are proud to feature big art papers and to give you the opportunity to mix and match these and are delighted to offer fabulous Belgian linen, which is recommended in Florence schools of art, but which is incredibly hard to source elsewhere.

**Here to Help.** The Pegasus Art team are always on hand to help if you require further guidance and are proud to serve professional artists, amateur enthusiasts and students alike and are always delighted to meet you all!





## Pete Garrard Ceramic Courses

### Hand built pottery and ceramic sculpture course

**A 28 hour course spread over eight half days from 19 January - 13 February and then 2 March - 27 March. £266 tuition\***

A ceramic-hand-building course, with a wide range of sculptural or functional projects that Pete can use to guide the complete beginner through a variety of basic techniques. More experienced artists are supported in the development of their own projects.

**Classes are limited to a maximum of 10** and Pete encourages his students to develop their own style and interests. Pete is a professional tutor with extensive experience in secondary and further education and a practising artist and sculptor (1st class BA honours). You can choose from the following days and times:

**Monday 5.45-9.25pm**  
**Thursdays 1-4.30pm**  
**Fridays 9.30am-1pm**

You can have 3.5 hours per session which gives you plenty of time to be creative and enjoy a cuppa and cake or biscuits during our break.

For more information contact:  
**[petergarrardceramics@yahoo.com](mailto:petergarrardceramics@yahoo.com)**

You can see the work of myself and my students: **@petegarrard** or FB **@Peter Garrard Ceramics**



## Lindy Allfrey Walton House, Sheep Street Stow On The Wold, GL54 1AA [lindyallfrey.co.uk](http://lindyallfrey.co.uk)

**2026 courses Online , visit**

[lindyallfrey.co.uk](http://lindyallfrey.co.uk)

### Three Day Weekend Course - Portrait Painting

**Friday** - Drawing the skull, anatomy, cast and painting the planes of the face, to learn the basics of portrait drawing/painting. Colour mixing beautiful subtle skin tones. Principles of gaining likeness and character.

**Saturday & Sunday** - Paint from the Model with tips and direction at all times. 3-day **Course £310**



**Three Day Course - Colour Theory In Still Life Painting.** Concentrating on Colour Theory Colour harmony, understanding the values/tones of colour, how to create a good composition. **3-day course £270**

**All Courses** - Paint, Canvas, paper, charcoal, easels included. Tea, frothy coffee and biscuits provided. The studio is lovely and warm with natural north light. There is good ventilation,

**4 to 5 max students to ensure personal tuition.**

Our monthly guide to the visual arts in the Cheltenham area.  
Published by ARTEbulletin, [hello@artebulletin.co.uk](mailto:hello@artebulletin.co.uk)

**The Arts Society, Cheltenham**  
[theartssocietycheltenham.org.uk](http://theartssocietycheltenham.org.uk)

**Tuesday 9 December 7.15pm**  
The Pavilion, Hatherley lane,  
Cheltenham GL51 6PN

**Blenheim Palace: Christmas Past  
and Present**  
**Lecturer: Antonia Keaney**

Throughout its 300-year history, Christmas at Blenheim Palace has always been a time of celebration. The 7th Duke and Duchess followed the lead of Queen Victoria and Prince Albert in making Christmas a family time and a time to give gifts to those who were in their employ. The traditions established by John and Frances the 7th Duke and Duchess are in many ways still continued to this day.

This talk looks at how Christmas has been celebrated over the years and how each November, the Palace and its grounds are transformed into a Christmas feast for the eyes.

The lecture is free to members and visitors are welcome for a fee of £8



For more information and to attend this event contact  
[info.cheltenham@theartssociety.org](mailto:info.cheltenham@theartssociety.org)

**History of Art Lectures**  
[sarah-middleton.co.uk](http://sarah-middleton.co.uk)

**Wednesday evenings, 6 – 7pm**  
**2 weeks £30**  
**The Green Room in The Painswick  
Centre GL6 6QQ.**

**History Of Art Lectures**

**Double Acts With Sarah Middleton**

Enjoy two consecutive Wednesday evenings exploring famous double acts in the history of art. be that artist husband and wives, contemporaries or rivals. join our curious, fun and informative group for an hour-long PowerPoint presentation with time for discussion and sharing our passion for art.

**3rd Dec & 10th Dec: Jane Morris &  
Dante Rossetti**

**Book online at :**

[sarah-middleton.co.uk/shop/history-of-art-classes](http://sarah-middleton.co.uk/shop/history-of-art-classes)

Or contact Sarah on 07990 587967 /  
[sarah@sarah-middleton.co.uk](mailto:sarah@sarah-middleton.co.uk)





## Cheltenham Young Artist 2026

### Cheltenham Young Artist 2026

This Competition is open to pupils attending Cheltenham Area Schools including from Churchdown and Bishops Cleeve.

**Two Sections:** Primary & Secondary  
The Theme “**My Favourite Thing**” ..... :  
From pets, to family, to places.

**Medium** 2D: Paint, pencil, crayon, pastels, inks, acrylics on Canvas boards NO COLLAGE, NO PHOTOGRAPHY, NO OIL PAINT

**Art Prizes, including cash prizes of £60, £40 and £20** will be awarded to the 1st, 2nd & 3rd and commended in both the Primary and Secondary categories. All framed work for the exhibition will be given to the young artists at exhibition end.

Each pupil may **submit ONE A4 artwork**. Work entered must be all the pupil's own art.

Entries **close FRIDAY December 12**

The artwork will be judged by a panel of three judges chosen by the Gardens Gallery, 10. 50 chosen entries will be framed for a celebration exhibition at the Gardens Gallery, Montpellier, Gardens, Cheltenham on the weekend of **January 17th & 18th between 10am – 4pm.**

All chosen work will be displayed with the name of the young artist, age and title of their work.

## Support the ART Bulletin

### Become a supporter

The **ART ebulletin** has always been a free resource for artists, arts organisations and art lovers alike. It champions all forms of visual art locally, commercial or not. We don't charge for advertising, as we think it should remain an independent directory that is available to all. As its popularity grows so does the time it takes to pull it together. If you value it, are able and would like to help support the cost of producing it each month, then **please consider giving an annual donation and help keep this valuable resource viable.**



Simply visit :

[paypal.me/artebulletin](https://paypal.me/artebulletin)

- enter your amount and press send.

alternatively, email:

[hello@artebulletin.co.uk](mailto:hello@artebulletin.co.uk) and we can send out further details.