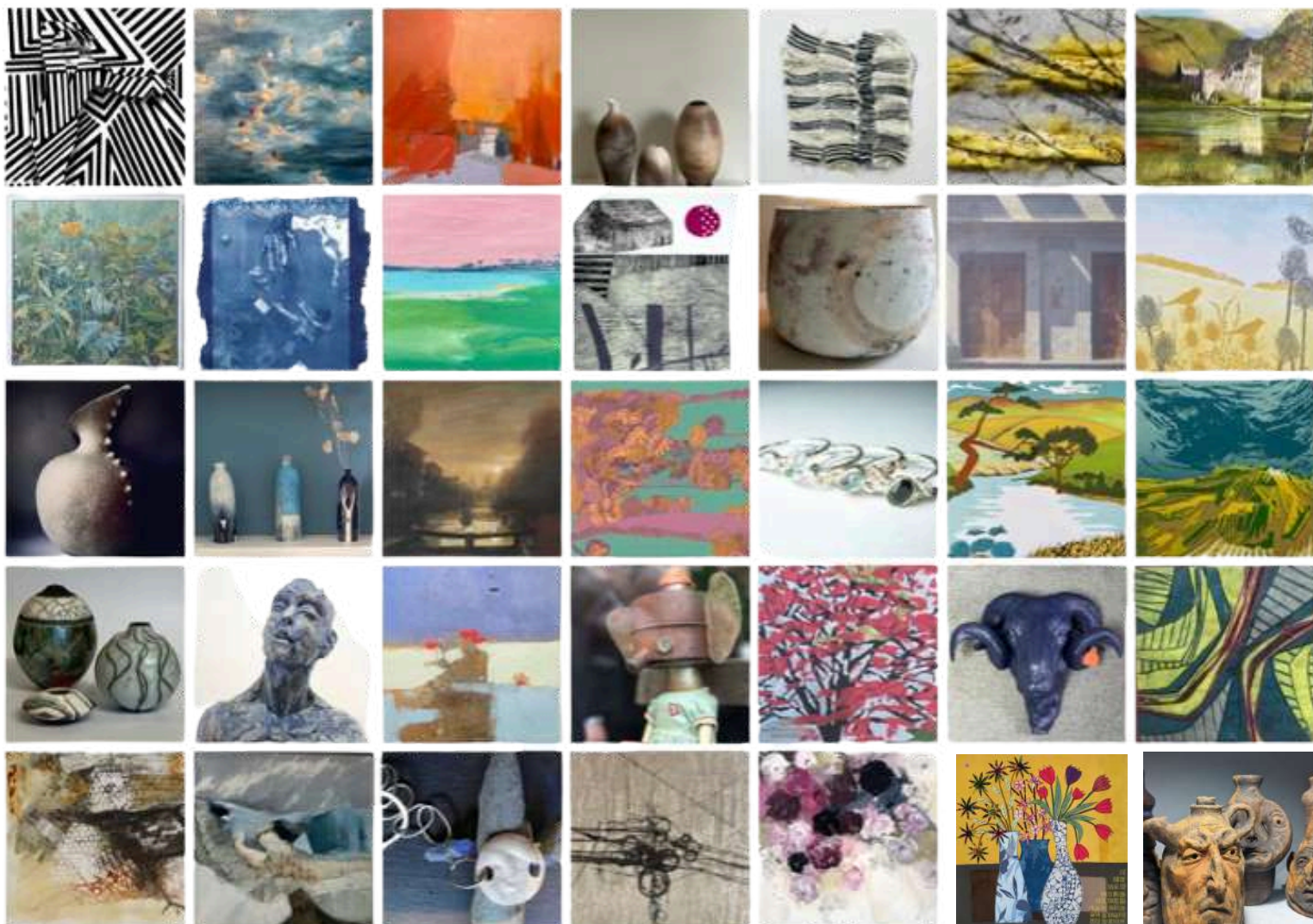


# CHELTENHAM ART eBULLETIN

Your monthly guide  
to the visual arts in  
the Cheltenham area

**JUNE 2025**



Our monthly guide to the visual arts in the Cheltenham area.

Published by ARTEbulletin, hello@artebulletin.co.uk

**Cheltenham Open Studios  
Art Trail  
COS25  
7-15 JUNE**

**Cheltenham Open Studios  
7th - 15th June**

The Open Studios art trail links together 78 different FREE exhibition venues, in which you can meet the artists, view their work, learn about their practice, and even have a go yourself. For savvy art buyers, it offers a great opportunity to buy art direct from local artists.

**THE  
COUNTDOWN  
BEGINS  
321**

Visit the COS website to see all participating venues and artists.

[cheltenhamopenstudios.org.uk](https://cheltenhamopenstudios.org.uk)



**Cheltenham Open Studios  
Art Trail  
COS25  
7-15 JUNE**

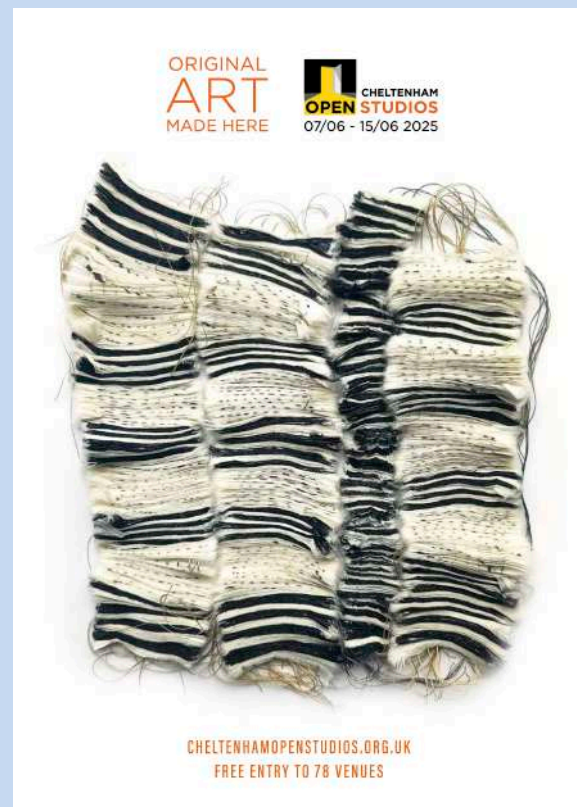
Pick up your FREE guide today..

A Physical Guide can be found at any of these wonderful places

@gardensgallery @springcheltenham  
@sixteengalleryonline @thewilsonchelt  
@artunioncheltenham @papyro\_studio  
@hatchardscheltenham @glosguild  
@pinkvintagecheltenham

Plus many shops, businesses and cafes throughout town ..

Or Find A Digital Copy on Our Website  
[cheltenhamopenstudios.org.uk](https://cheltenhamopenstudios.org.uk)





Our monthly guide to the visual arts in the Cheltenham area.

Published by ARTEbulletin, [hello@artebulletin.co.uk](mailto:hello@artebulletin.co.uk)

## GARDENS GALLERY

Montpellier Gardens,  
Cheltenham GL50 2XL  
[Gardensgallery.co.uk](http://Gardensgallery.co.uk)

**28 May - 3 June.**

**Friends of Studio Liney** - A joint exhibition of works produced by friends of Studio Liney, including 3d work, landscape, life drawing, portraiture, still life. Plus, work from The Blue Yonder, an Australian Idyll.



**6 - 15 June**

**Open daily: 10am - 6pm**

**Sunday 15, 10am - 4pm.**

**Cheltenham Open Studios 2025 Taster Show**

Gardens Gallery is **Venue 1** on the Open Studios art trail. Come and browse the taster exhibition and see the range of work on this year's trail, and pick up your FREE guide here or download a copy at [cheltenhamopenstudios.org.uk](http://cheltenhamopenstudios.org.uk)



## GARDENS GALLERY

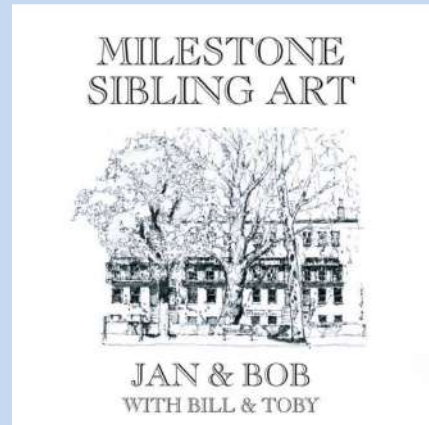
Montpellier Gardens,  
Cheltenham GL50 2XL  
[Gardensgallery.co.uk](http://Gardensgallery.co.uk)

**20 - 22 June**

Open during this year's Cheltenham Food Festival. 10am - 7pm

### Milestone Sibling Art

Whether in pencil or in pen Bob always creates a delicate drawing to summarise the scene to be committed to paper. The main subjects of his work are Castles, Urban landscapes and Portraits. This exhibition includes pen and pencil work, many pen and wash, some great water colours and a few multimedia.



**25 June - 1 July**

**Memories** - An exhibition of works by Sule Alat. [sulealatart.com](http://sulealatart.com)



Our monthly guide to the visual arts in the Cheltenham area.

Published by ARTEbulletin, [hello@artebulletin.co.uk](mailto:hello@artebulletin.co.uk)

### Spring Cheltenham

14 Rotunda Terrace, Montpellier Street,  
Cheltenham, GL50 1SW

[Springcheltenham.com](http://Springcheltenham.com)

**...until 3 June**

**Pathways – Jane Foot**

**7 – 15 June**

**Cheltenham Open Studios**

A Superb Mix of Artists, Showcasing  
Painting, Ceramics, Mixed Media,  
Textiles, Drawing & Jewellery.



**16 – 24 June**

**Two Hemispheres** brings together the  
vibrant, contrasting styles of Clive  
Patterson and Judith Moule—long-time  
artist neighbours in St Albans.



**25 June – 8 July**

**To Love and to Cherish**  
**Addy Gardner**



### Sixteen Gallery

16 Rotunda Terrace, Montpellier Street,  
Cheltenham, GL50 1SW

[sixteengallery.com](http://sixteengallery.com)

**The Sixteen Gallery Open Call 2025**

Submissions Open: **13 May - 13 July**

This year Sixteen Gallery is hosting its  
first Open Call Exhibition. They're  
inviting all emerging and established  
artists to submit work for an open  
exhibition at the gallery that will be  
judged by a guest panel.



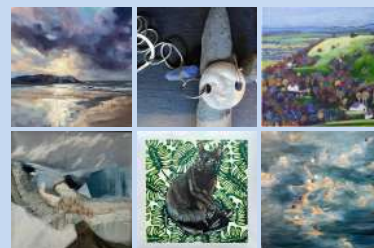
**.. until 4 June**

**Sarah Brooker – Heartfelt**

**5 – 18 June**

**Cheltenham Open Studios**

A Fantastic Mix of Artists, Showcasing  
Mixed Media, Painting, Printmaking,  
Pastel Drawing & Jewellery.



**19 - 25 June**

**Litha - A Midsummer Celebration**

**26 June – 2 July**

**Charlotte Keating – Tranquillity**

For information on the Open Call, all  
exhibitions coming up and Sixteen  
Online visit: [sixteengallery.com](http://sixteengallery.com)

Our monthly guide to the visual arts in the Cheltenham area.

Published by ARTEbulletin, hello@artebulletin.co.uk

## The Wilson

Cheltenham Art Gallery and Museum  
Clarence St, Cheltenham GL50 3JT  
[cheltenhammuseum.org.uk](http://cheltenhammuseum.org.uk)

**Tuesday to Saturday 10am to 5pm, Sunday 10am to 4pm.**  
**The Wilson Kitchen is open**  
**Mon – Sat 10am - 5pm, Sun 10 - 4pm**

**.. until 31 August**  
**Common Ground**

**In this land that we stand on, there are secrets untold, stories hidden, histories waiting to be unearthed – Ben Edge**

Curated by painter and folklorist Ben Edge, Common Ground brings together works by contemporary artists and objects from The Wilson's collection to explore land use and access throughout history in Cheltenham, the Cotswolds & the UK.

Common Ground brings together objects from across The Wilson's collections which share local histories and explore how changing values and beliefs, and developments in industry, technology and farming have affected the land. Woven into the narrative are those acts of defiance which have continually challenged laws around land use and access throughout history



**The Wilson Art Gallery and Museum**  
51 Clarence St, Cheltenham GL50 3JT

**Wednesday 4 June, 6 – 9pm FREE**

Join **Wilson Nights** for a nature themed wearable art show by resident artist **Jussara Nazare** with walkabouts, talks and live improvised music. Join in the music with **Bleephaus** and **Cheltenham Improvisers Orchestra**. Continuing the eco-textiles theme, join resident artists **Grace Gatley** and **Helena Doyle** for **Sustainable Stitch**, an experimental embroidery workshop, blending traditional techniques with unconventional recycled materials.

Plus, **Craftivist Collective** return to Wilson Nights with a workshop that delves into perspectives and experiences of masculinity.

**@cheltenhamcraftivists**



Visit the studios of eight very different contemporary artists in residence at The Wilson in 2025.



COS25 VENUE



Our monthly guide to the visual arts in the Cheltenham area.

Published by ARTEbulletin, [hello@artebulletin.co.uk](mailto:hello@artebulletin.co.uk)

### Paragon Gallery

4, Rotunda Terrace, Montpellier St,  
Cheltenham GL50 1SW  
[paragongallery.co.uk](http://paragongallery.co.uk)

**11 June - 28 June.**

**Saturday 21 June 10am - 5pm**  
**Meet the Artist**

**Mark will be taking visitors on a tour of his paintings around the gallery at 11am, 12pm, 2pm and 3pm.**

**An Exhibition of Oil Paintings, Book Launch & Artists Tour**

We are delighted to host a book launch for acclaimed painter and writer, Mark Stopforth. Mark's expertise in painting using the Alla Prima method and his writing skills combine in the form of a stimulating new book designed to share his knowledge and skills with others. "Alla Prima Skies and Seas" is a thorough guide to this exciting technique. .



**PARAGON** Gallery

### Gloucestershire Guild

18 Rotunda Terrace  
Montpellier Street  
Cheltenham GL50 1SW  
[guildcrafts.org.uk](http://guildcrafts.org.uk)

**The Gloucestershire Guild Shop** is the place to buy contemporary craft in Cheltenham. You will find beautiful handmade work by our selected professional makers including contemporary jewellery, ceramics, textiles, furniture, leatherwork, glass and baskets.



COS25 VENUE

Just a gentle heads up for all you **Crafts Alive at Rodmorton Manor** fans .... we know it might be a bit early but...

tickets for the event - **10th - 14th September 2025** - are now available!

**'Flowers and Sustainable Craft'** is the theme for the fourth five-day festival.

A unique re-imagining of one of the country's finest Arts and Crafts houses, Rodmorton Manor in Gloucestershire, Crafts Alive celebrates outstanding contemporary crafts, including an exhibition of work especially made for, and inspired by the house and its floral surroundings with the emphasis on sustainability.

Original work will be for sale, alongside guest exhibitors, demonstrations, workshops, talks and delicious locally made food and drink.

Visit the website for a directory of makers and information on upcoming events - [guildcrafts.org.uk](http://guildcrafts.org.uk)

Our monthly guide to the visual arts in the Cheltenham area.

Published by ARTEbulletin, [hello@artebulletin.co.uk](mailto:hello@artebulletin.co.uk)

**University of Gloucestershire**  
Park Campus  
Cheltenham GL50 2RH  
[glos.ac.uk/event/degree-show-2025/](https://glos.ac.uk/event/degree-show-2025/)

## DEGREE SHOW 2025

**Until 8 June, 10am – 4pm each day**

Join the University of Gloucestershire for their biggest event of the year as they celebrate the work of their final year students and transform the campus into a huge showcase of creative talent.

There's no need to book, all are welcome, entry is free.

This year's show is very special as it is marking the advent of the Creative Campus at Park, home to a growing and diverse creative community. The show represents many different forms of creative expression but have one thing in common: they are all passionate about telling stories, capturing moments through images, sounds, words, objects, movement and more. They are excited to share their work with friends, families, industry professionals and the community at large.



COS25 VENUE

**Art in The Park**  
**Imperial Gardens**  
**Cheltenham**

**14 June – 13 July**

**10am – 7.30pm**

**Free entry**

**Art in the Park**  
**Imperial Gardens, Cheltenham**

Different artists each week

Discover (and buy) original pieces of art from various local artists, from beginner to accomplished.

Different artists each week.

Completely free to visit and browsers are very welcome.

FB: [aitp\\_cheltenham](https://www.facebook.com/aitp_cheltenham)



Our monthly guide to the visual arts in the Cheltenham area.

Published by ARTEbulletin, hello@artebulletin.co.uk

### New Brewery Arts

Brewery Court

Cirencester GL7 1JH

[newbreweryarts.org.uk](http://newbreweryarts.org.uk)

**9am to 5pm Monday;  
10am to 5pm Tuesday;  
9am to 5pm Wednesday to Saturday  
Admission: Free of charge**

**29 May – 12 July**

**Craftival** creates new connections for makers, craftspeople, local charities, families and community groups.

Join them for a packed programme of events from celebrating all things craft.



Please visit the website for information on all other events and workshops.

[newbreweryarts.org.uk](http://newbreweryarts.org.uk)

COS artist Liz Valenti will open her studio at New Brewery Arts during Cheltenham Open Studios



COS25 VENUE

### Nature in Art Museum & Art Gallery

Main A38 Twigworth

Gloucester GL2 9PA

[natureinart.org.uk](http://natureinart.org.uk)

**Opening times: Tuesday - Sunday  
(& bank holidays) 10am - 5pm**

**... June 8**

**Nature in Miniature:** An exhibition of exquisite 2D and 3D works celebrating wildlife and nature in miniature by members of the Royal Miniature Society.

**10 June – 13 July**

**Whale Song** - A celebration of whales through drawings, paintings, prints and sculpture. The centrepiece of this celebration is Tom Ashworth's painting of a sperm whale measuring 1.8 x 3.6m. These magnificent animals, some critically endangered, are almost certainly the largest that have ever existed on earth. More information and details of supporting events coming soon.



*'Take a Breath' Humpback whales (Batik) by Beth Erlund (USA)*

For more info and what's on, visit [natureinart.org.uk/](http://natureinart.org.uk/)



Our monthly guide to the visual arts in the Cheltenham area.

Published by ARTEbulletin, hello@artebulletin.co.uk

## Little Buckland Gallery

Little Buckland  
Broadway WR12 7JH  
[littlebucklandgallery.co.uk](http://littlebucklandgallery.co.uk)

**6 June - 28 July**  
**Open Friday – Monday, 11am – 4pm**

### Aestival Exhibition

Showcasing some of the wonderful  
gallery artists



■ LITTLE  
BUCKLAND  
GALLERY ■



## Spencer House Gallery

34 Long Street  
Tetbury GL8 8AQ  
[Spencerhousegallery.co.uk](http://Spencerhousegallery.co.uk)

**... until 25 August,**  
**10am – 1pm & - 5pm**  
**Core Opening: Thurs – Saturday**

**Private View: Friday 20 June,**  
**6.30 – 8.30**

### Indulgence

**Rococo-inspired flamboyance,  
ornament and colour**

This summer indulge in all things  
Rococo and Baroque as the SHG  
team up with South Cotswolds  
partners for the *Rococo Rocks!* festival  
of music, art and garden design.

Winner of the Plein Air Art Contest at  
Painswick Rococo Garden, Mark Owen  
will be exhibiting alongside the other  
fantastic works.

## INDULGENCE

ROCOCO-INSPIRED FLAMBOYANCE,  
ORNAMENT AND COLOUR



### The 2025 Affordable Garden Art Exhibition

Showborough House, Twynning  
[showborough.com](http://showborough.com)

**... until 15 June**  
**Open 4 days a week,**  
**Thursday - Sunday, 10:30am - 4pm**

The images below are from previous exhibitions, but they are representative of the sculptures they have every year. Works in all media, including stone, wood, metal, glass, bronze, resin, ceramic and reclaimed materials; in representational and abstract styles; and pieces that have been carved, built and assembled. Some sculptors come regularly, some occasionally and some only once. Most artists are very happy to accept commissions. They can usually put people in touch with a particular sculptor or recommend where they can find work in their favourite style or material.



### Cotswold Sculptor Exhibition

Dr Jenners House  
 Church Lane, Berkeley GL13 9BN  
[jennermuseum.com](http://jennermuseum.com)

**Until 13th September**  
**Sun-Wed 11am-4pm**

Free admission with Museum entry, please see the museum website for details

### “Why not think? Why not try the Experiment?”

The inspiration was an exhortation to Edward Jenner by fellow scientist, John Hunter, to stop thinking ‘What If?’, but to just go ahead, experiment and find out.

So we invited artists to be inspired by Edward Jenner and his myriad of interests, respond to the historic home and gardens and take up the opportunity and platform to try something different, and most importantly to *experiment!*

18 sculptors rose to the challenge and have been inspired to experiment, explore and push themselves just as Edward Jenner did. We hope that visitors will be inspired to think differently about sculpture and enjoy the experience of looking at Jenner’s interests and achievements through an artists lens.

Dr Jenners’ House, the birthplace of vaccination, tells the story of the pioneering polymath Edward Jenner (1749-1823), the eradication of smallpox and his ongoing legacy of vaccination. It’s a small independent museum with around 5000 visitors.



Our monthly guide to the visual arts in the Cheltenham area.

Published by ARTEbulletin, [hello@artebulletin.co.uk](mailto:hello@artebulletin.co.uk)

### Stroud Valley Art Trail [sitefestival.org.uk](http://sitefestival.org.uk)

#### Annual Arts Festival in Stroud

In 2025 81 artists will open their studio doors in 40 locations in the Stroud Valleys over 2 weekends :

**Saturday 14 - Sunday 15 June**  
**11am - 5pm**

**Saturday 21 - Sunday 22 June**  
**11am - 5pm**

Plus, over 250 artists exhibiting and performing in exhibitions and events: 7 - 22 June.

For more information, please visit

[sitefestival.org.uk](http://sitefestival.org.uk)



**SITE**  
**FESTIVAL**  
**2025**

### Gloucester art trail and art competition [gloucestercontemporaryartists.art](http://gloucestercontemporaryartists.art)

#### GLOUCESTER CITY ADOPT AN ARTIST 2025

City centre shops, cafes and businesses in Gloucester are displaying original art by local professional artists in their windows until the end of June.

The businesses are taking part in Gloucester Contemporary Artists' second **Adopt an Artist trail** with works on display from the Folk in Westgate Street to the Museum of Gloucester in Brunswick Road.

**Art competition:** non-professional artists, of any age, are invited to create their own work using one of the exhibited artworks as inspiration and enter the **free** competition. Winners will receive generous cash prizes: 1st prize £200, 2nd prize £100, 3rd prize £50

**Entries must be received by 5pm on 14 June 2025.**

**Shortlisted entries will be framed and exhibited** in Cathedral Quarter Gallery from 21-28 June alongside the chosen artworks with the three top prizes being awarded to winning entrants at a Private View event on Sunday 22 June. All competing artists will be invited to the Private View.

Details on how to enter and to download a trail map visit [gloucestercontemporaryartists.art/art-trail-2025](http://gloucestercontemporaryartists.art/art-trail-2025)



### Watch This Space [Wtscollective.co.uk/shop](http://Wtscollective.co.uk/shop)

Creative workshops on the beautiful grounds at The Community Hub, Sue Ryder, Leckhampton Court  
**Recharge, relax and enjoy!**

**Friday 13 June, 10 - 12.30pm**

**Ceramic Animals.** Join a masterclass in hand building techniques in this fun session creating a ceramic dog or cat of your choice, with award-winning ceramicist Ros Ingram. **£65pp (8 people)** including all tools, materials and firing. **(2 spaces left)**



**Thursday 10th July, 10am – 3pm**  
**Outdoor Watercolour Painting**  
**- Beginners Watercolour Landscape**  
Unleash your inner artist amidst the tranquillity of the gorgeous Sue Ryder Leckhampton Court gardens. **£50pp**



**Friday 3 October, 10am - 4pm, £70**  
**Willow Basket Weaving Workshop**  
**2 spaces left**



Visit [wtscollective.co.uk/shop](http://wtscollective.co.uk/shop)

### Summer Artisan Market Dunkerton's

**8 June 11am – 4pm**

#### Summer Artisan Market

A thoughtfully curated event offering of gorgeous, handcrafted artisan products.

With an array of fantastic products from prints and illustrations, ceramics, glass, handmade cards, handmade chocolates, plus a range of natural and organic beauty products.

With Father's Day just around the corner it's a great place to come and pick up a gift for you or a loved one.

It's a perfect chance to grab a coffee, treat yourself to one of the many delightful, tasty offerings the bakery has or something for breakfast or lunch from our food vendors

The whole family is welcome, including dogs. No need to book and free to attend.



**Date for the diary .. The next one is**  
**Sunday 28 September 11am – 4pm**

**THE YARD**

Upper Bath Street, Cheltenham  
[theyardartspace.com](http://theyardartspace.com)

the **yard:ARTspace** offers a focal point for those who want to make printmaking an important part of their creative process.

**WORKSHOPS****28 – 29 June**

**Collagraphs om botanical contact prints** - Make interesting substrates with botanical contact prints on paper and fabric. Leaf and rust marks in delicious natural tones act as a gentle background to intaglio prints made later in the workshop. Using these interesting natural backgrounds print simply made collagraphs using glue and card. Add chine colle and blended inking to the techniques learnt in this busy weekend workshop.

**Cost £230** to include most materials

**5-6 July, 10am - 4pm each day**  
**CYANOTYPE WEEKEND.**

This intensive weekend will introduce you to the basic theory and practice of cyanotype on a variety of papers then show you how the colouring can be toned and changed to create one off imagery. From basic to advanced techniques using the sun.

**£250** to include most materials.

All details can be found at  
[theyardartspace.com](http://theyardartspace.com) or email  
[suebrown@theyardartspace.com](mailto:suebrown@theyardartspace.com)



COS25 VENUE

**Nicky Millington**

The Art Studio  
[cheltartstudio.com](http://cheltartstudio.com)

**Art Classes – looking to book something for the Summer term ...**

**Children's Art Club –**

<b>Tues</b>	<b>-</b>	<b>Yr 6-9</b>	<b>5 - 6.30pm</b>
<b>Wed</b>	<b>-</b>	<b>Yr 5-6</b>	<b>5 - 6.30pm</b>
<b>Thurs</b>	<b>-</b>	<b>Yr 5-6</b>	<b>5 - 6.30pm</b>

The classes cost **£18** each for the older children. Payment is made for the course of 6 or 7 weeks.

**Adults:**

**All in studio** on Tuesdays, Wednesdays, Thursdays and Fridays  
**10am - 12pm**

New: Thursday afternoon – **1 - 3pm**

Classes are **£20** per session, paid for as a course in one payment.

For more information and how to book, for your Autumn classes, please visit:  
[www.cheltartstudio.com](http://www.cheltartstudio.com)

The Art Studios art classes give adults and children the opportunity to discover and develop their creativity, increasing their skills of observation and application of a wide range of different media.



COS25 VENUE

Our monthly guide to the visual arts in the Cheltenham area.

Published by ARTEbulletin, [hello@artebulletin.co.uk](mailto:hello@artebulletin.co.uk)

**Cheltenham School of Fine Art**

32 Wellington Lane  
Cheltenham, GL52 2AG  
[cheltfineart.co.uk](http://cheltfineart.co.uk)

**Weekend Workshops**

- **Saturday 21st June** – Life Drawing Workshop
- **Sunday 22nd June** – Watercolour Workout III
- **Sunday 6th and 27th July** – Untaught life drawing with Jessie Carr

**Summer Schools**

The tutors at CFA will be running a series of exciting workshops covering landscape painting, experimental painting, portrait and still life painting in oils, watercolour and printing. All workshops include materials.

Details and booking online  
[cheltfineart.co.uk](http://cheltfineart.co.uk)

Any questions call **07522 003 024** or email, [cheltfineart@proton.me](mailto:cheltfineart@proton.me)

**Studios Available to Hire**

The studios at Cheltfineart are available for art, yoga, pilates, or qigong classes on the days that it is not being used for art classes. The space is light and airy, and rates are kept as low as possible to enable different groups to use the space.

**art-K**

10 Church Street, Charlton Kings,  
Cheltenham GL53 8AR  
[art-k.co.uk](http://art-k.co.uk)

**Art-K provides classes in drawing, painting and 3D modelling.**

After school Wednesday to Thursday, as well as Saturday sessions.

For information on all after school and weekend classes for children up to 16yrs for the new term please contact:  
[art-k.co.uk](http://art-k.co.uk)

Dan, the owner welcomes any enquiries, see below or in person at the studio.

**01242 361428**  
[dan@artk.co.uk](mailto:dan@artk.co.uk)

The art class environment is encouraging, inclusive and non-competitive. This allows every student to go at their own pace, developing their unique skill set. Over time, students grow significantly in confidence, expression, and creativity. This confidence can change their perception of themselves, as well as the perception others have of them. Trained on the art-K programme, as well as on health and safety and safeguarding (and much more!), all art-K teachers are professional, kind and caring. We never have more than 7 students to 1 teacher and all staff are DBS checked.





## ART CLASSES

### Gemma Hastilow - Art Classes

**Weekly classes** in Winchcombe and Bishop's Cleeve

- **Mondays** - Life Drawing: Hone your drawing skills working from live models.

- **Tuesdays** - Art for beginners Unleash your creativity, learning all of the basics.

- **Wednesdays** - \* **NEW** \*  
Beginners Acrylic Painting:

- **Fridays** - Watercolours for Beginners:

**Saturday 28 June 10am - 12pm**  
**life drawing weekend workshop**  
drop-in class, Winchcombe



**14 June, 10am- 3pm**  
**Weekend Watercolour - A Splash of Red - Painting Poppy Fields. £55**



For all info, including costs, how to book and all **weekend workshops, weekly classes and more!** visit [gemmahastilow.co.uk](http://gemmahastilow.co.uk)

## GPC

Griffin Mill, Stroud.

[www.gpchq.co.uk](http://www.gpchq.co.uk)

Explore a world of different types of Printmaking in this the 20<sup>th</sup> Anniversary.

**Saturday 7 June, 10am – 4pm**  
**Exploring Monoprinting**  
with Cathy Mills, £85



**Sunday 8 June, 10am – 4pm.**  
**Even More! Gelliplate**  
with Jeanette Newell, £86



**Summer School.**  
**7 June – 14 August**

**print**

MONOPRINTING  
ETCHING  
LINOCUT  
KATAGAME & KATAZOME  
WOODCUT  
CYANOTYPE

**summerschool**

Ranging from  
1 day  
workshops to 4  
day courses  
07/06 - 14/08

GLOUCESTERSHIRE  
PRINTMAKING COOP

Tutors:  
Cathy Mills  
Wendy Rhodes  
Tabitha Fedden  
Rachele Dickie  
Philippa Thomas  
Anne Haworth

TO BOOK  
[WWW.GPCHQ.CO.UK](http://WWW.GPCHQ.CO.UK)

Visit the website for all the detail, including other courses and events coming up. [gpchq.co.uk](http://gpchq.co.uk)

Our monthly guide to the visual arts in the Cheltenham area.

Published by ARTEbulletin, hello@artebulletin.co.uk

## Workshops

### Collage Workshops with artist Helen Norman The Hen House, Staunton

Create your own work of art. A collage workshop suitable for everyone, from those with no experience of art through to the those with some experience.

**18 June, 16 July. 10am–1pm**

For more information

Email: [nickivizor@gmail.com](mailto:nickivizor@gmail.com)

Or call **07765 418887**



## Learning & Participation Hub, Gloucester Cathedral, St Mary's Gate, Gloucester, GL1 2QR

**Sunday 8 June, 9:30am - 4pm**

### Medieval Book Binding: Limp Binding - a modern interpretation, £85

Join experienced tutor Magalie from Brilliant Magpie Bookbinding in this workshop set in the medieval surroundings of the Learning Centre in St Marys Gatehouse.

At the end of the day, you will have your own bound notebook to take home.

In this workshop, Magalie will guide you through the making of a medieval book binding, replicating many of the books found in our own Medieval Library. You will create your own 14th century style binding, using modern materials.

To book visit the Gloucester Cathedral website.

<https://gloucestercathedral.artsvp.com/74dd68>



**Nicky Harvey Workshops**  
artworks-glos.co.uk

**ARTWORKS 2025 Workshops**  
Various locations

**21 June, 10-4pm**

**Birds and butterflies in oils or acrylics with Lucy Burton at Highbury Church Hall in Cheltenham**  
£65, plus £5 for a board.  
**5 SPACES LEFT**



**5 July - 10 - 4pm**

**On Pet portraits in soft pastels with Jackie Cox at Abbeyfields in Winchcombe** £70  
**4 SPACES LEFT**



For more information on all other workshops coming up call

**Nicky Artworks 07531 837045**  
Or visit [artworks-glos.co.uk](http://artworks-glos.co.uk)

**Art Classes**

**NEW Art Classes with Nick Dawes**

**Every Friday 10.30 – 12.30.**

**The Reddings Community Centre, Cheltenham**

**£12** per lesson,  
payable on attendance no upfront fees

For more information please email:

[daweart2015@gmail.com](mailto:daweart2015@gmail.com)





**Gas Green Community Centre**  
Baker Street, Cheltenham GL51 9HQ

### **Art for All .. art for wellbeing**

Art groups for adults with a mental health condition, suitable for all levels of experience. Please note that four of our groups are accessible, denoted \*

### **Varied Locations**

**Wednesday 1-4pm** Nature inspired Drawing and Painting outside\*  
Varied Locations This group goes to different 'green' locations to draw and paint nature and landscape

**Wednesday 1-4pm** Photography\*  
As above

### **Gas Green**

AFA Art Room : **Thur 10am - 12pm**  
Painting and Drawing\*. This is a general art group, painting and drawing

Community Room **Thur 12.30 -2.30pm**  
Painting and Drawing\* This is a general art group, painting and drawing

AFA Art Room **Thur 2.30-4.30pm**  
Women's Group. This is General Art group for women

AFA Art Room **Friday 10am-12pm.**  
Quiet Group. A general painting and drawing group, suitable for people with an additional neurodiverse condition

AFA Art Room - **Friday 12.30-2.30pm**  
Printmaking. A general printmaking group using safe techniques

Community Room **Friday 2.30-4.30**  
Mindful and Social Craft\* This is a varied arts and craft group

**For all detail: [artforallgroup.co.uk](http://artforallgroup.co.uk)  
[artforallgroup@outlook.com](mailto:artforallgroup@outlook.com)**

### **Life drawing tutored sessions, with Tutor, Julie Smith**

#### **2025 Dates so far ...**

**21 June** 10am - 12pm, £15 session

This session is for any skills level, from novices to practicing artists, who want a supportive and stimulating environment in which to learn about the perceptions and mark-making capabilities required for making successful drawn responses from the nude figure. Julie comes with many years' experience working with artists, students and interested individuals.

#### **What should you bring to the class?**

- Pencils & charcoal, & any materials you like to use,
- A2 cartridge paper pad, drawing board, masking tape, clip, sketchbooks etc.
- Erasers – plastic & putty rubber

We will be working with chairs rather than easels. You are welcome to bring your own easel if you have one.



To confirm your attendance e-mail Julie Smith: [flowilde@hotmail.com](mailto:flowilde@hotmail.com)

## The Arty Crafty Bunch

**At Como Blend, 2 Station Mews, Old Station Drive, Leckhampton**

### **Creative Coffee.**

**Every Monday, 1 - 2.30pm,**

Nurture your creative side with a chance to natter Painting, crafting, drawing No artistic experience necessary. **£12** a session inc all materials and artisan coffee.

Sessions will run on:

#### **Monday 2 June**

*No Group- coffee shop closed*

**Monday 9 June, Monoprinting** (during Open Studios)

**Monday 16 June, Choose One Colour-Mindful Mini Acrylic Canvases**

**Monday 23 June, Lips & Eyes Tonal Drawing**

**Monday 30 June, Wet Felt Making**

**Monday 7 July, Tasselled Woven Wallhangings**

**Monday 14 July, Fabric Painting: Shells**

For more information on current sessions and to book visit

[theartycraftybunch.com](http://theartycraftybunch.com) Or email **Sarah** at [theartycraftybunch@gmail.com](mailto:theartycraftybunch@gmail.com)



**COS25 VENUE**

## WE CREATE

[www.we-create.org.uk](http://www.we-create.org.uk)

**Bees In Common - We Create** are currently working on a community land-art project on St Paul's Road that aims to transform a small plot of land for the benefit of pollinators. There has been a dramatic decline in pollinating insects in the last 40 years due to habitat loss, pesticide use, invasive species and climate disruption. They have established bee hives managed by local apiarist Nathan Wylam and are working to increase the diversity of forage over time.

The project, **Bees In Common**, has enabled them to observe the hive and bee colony as a dynamic expression of ecosystem building.

During **March - June 2025** there is an exhibition at **The Wilson Art Gallery & Museum in Cheltenham**. We Create have re-imagined The Wilson as a hive and its galleries supporting cells of activity where they have organised elements in an exhibition that reflects collective action and creative co-operation.

---

**Wednesday 18 June, 7 - 9pm**

**Herrington Rooms, next to St Pauls Church**

### **We Create Make and Mend**

A monthly social crafting group. An opportunity to connect with others, share skills, ideas and cake.

For more info, visit:

[we-create.org.uk/make-and-mend](http://we-create.org.uk/make-and-mend)

## Cheltenham Poetry Festival [cheltenhampoetryfestival.co.uk](http://cheltenhampoetryfestival.co.uk)

### Cheltenham Poetry Festival 2025

Words Meet The Wonders Of Science at this year's festival.

The events have been designed to thrill, illuminate, and spark curiosity in some of the most beautiful settings of Cheltenham. They explore the remarkable relationship between poetry and science!

Guests include renowned Radio 4 broadcaster and host of **The Infinite Monkey Cage** **Robin Ince** who joins Jo Durrant for a lively discussion that intertwines science, humour, and poetry, **Poetry and Pythagoras**; an exploration of the intersections between poetry and mathematics and **Origins**; featuring Oxford University Professor of Theoretical Physics, Joseph Conlon, who will share poems from his collection that illuminates the birth of the universe through verse.

Throughout the festival, visitors can look forward to readings from poets whose works are inspired by biochemistry, physics, astronomy as well as other themes which include healing from trauma, the power of poetry to shed light in dark times, the joys and consolations of nature and much, much more.

You can get tickets and read more at [ticketsource.co.uk/cheltenhampoetryfestival](http://ticketsource.co.uk/cheltenhampoetryfestival)

The Cheltenham Poetry Festival 2025  
Supported By The Ken Healy Stem Fund.

**CHELTENHAM  
POETRY FESTIVAL**  
[cheltenhampoetryfestival.co.uk](http://cheltenhampoetryfestival.co.uk)

## Plein Air Competition 2025 WINNERS

### URBAN Plein Air Art Competition

Watch This Space hosted a plein air urban art competition documenting the industrial heritage at **Lansdown Industrial Estate**.

Overall winner - **Mark Owen**

Contemporary landscape –  
**Lucy Birkinshaw**

Painting / Landscape - **Ali Edgson**

Indulgence - celebrating the flamboyant nature of the garden - **Sarah Davis**

Capturing the essence of location and place - **Liz Freedman**

Works and a detailed narrative about the heritage of the site will be published in a book, coming out shortly.

### Rococo Plein Air Art Competition WINNERS

- Overall Winner - **Jill Hammond**

- Traditional Artwork Winner  
**Mark Owen**

- Contemporary Artwork Winner  
**Lucy Birkinshaw**

To view the winners work and highly commended prize winners, head to **[wtscollective.co.uk](http://wtscollective.co.uk)** plein air section and scroll to the bottom.



## The Arts Society, Cheltenham

[theartsocietycheltenham.org.uk](http://theartsocietycheltenham.org.uk)

**Tuesday 10 June 7.15pm**

The Pavilion, Hatherley Lane,  
Cheltenham GL51 6PN

### Sculpture and Design

**David Worthington**

In current theoretical discourse the distinction between sculpture and design has been eroded with many critics seeing them as the same thing. However there remains the creative intentions and end result. As David Hockney said the only design that moves you is the 39 Bus. In the hyper consumer age in which we live design plays an increasingly important role in brand identity and product differentiation. Designers like Jonathan Ive at Apple look at sculpture and art to get inspiration. But sculptors are also inspired by design, and we can see the introduction of new materials into the art gallery migrating from industry.



This lecture is free to members and visitors are always welcome for a fee of **£8**. For more information and to attend either of these events contact [info.cheltenham@theartsociety.org](mailto:info.cheltenham@theartsociety.org)

**Cafe Arts** - regular Social Coffee  
Morning meet up again in September.

## History of Art Lectures

**Wednesday evenings, 6 – 7pm**

**2 weeks £30 - Starts 25 June**

**The Green Room in The Painswick  
Centre GL6 6QQ.**

### History Of Art Lectures

**Double Acts With Sarah Middleton**

Enjoy two consecutive Wednesday evenings exploring famous double acts in the history of art. be that artist husband and wives, contemporaries or rivals. join our curious, fun and informative group for an hour-long powerpoint presentation with time for discussion and sharing our passion for art.

**25th June & 2nd July:** Barbara Hepworth & Ben Nicholson

**3rd Sept & 10th Sept:** Lee Krasner & Jackson Pollock

**1st Oct & 8th Oct:** Frida Kahlo & Diego Rivera

**5th Nov & 12th Nov:** Van Gogh & Gauguin In Arles

**3rd Dec & 10th Dec:** Jane Morris & Dante Rossetti

**Book online at :**

[sarah-middleton.co.uk/shop/history-of-art-classes](http://sarah-middleton.co.uk/shop/history-of-art-classes)

Or contact Sarah on 07990 587967

/ [sarah@sarah-middleton.co.uk](mailto:sarah@sarah-middleton.co.uk)



**Cheltenham Camera Club**  
**cheltenhamcameraclub.uk**

**Cheltenham Camera Club** is the largest photo club in Gloucestershire. A friendly, welcoming bunch with members ranging from international award-winners to novices. Their aim is simple: To help you enjoy photography and take better pictures. Whatever your standard, they will make you welcome, so feel free to drop in and give them a try.

The programme is hugely varied. It includes regular Thursday evening meetings from September to May, monthly technique sessions, friendly critique groups, studio shoots and trips to local, national and international venues. During the summer they organise a range of outings combining sociability and photography.

Established in 1865, renowned for their annual international salon and exhibition, as well as sponsorship of the Gloucestershire Young Photographer competition, encouraging the next generation of photographers.

For more information including how to join please visit the website.

<https://cheltenhamcameraclub.uk>



**Summer School**  
**Gloucester arts and crafts group**  
**Newent school, Gloucester**

**Monday 28 July – Friday 1 August**  
**Annual summer school for adults,**  
**Newent school, Gloucester.**

44 different arts and crafts courses on offer including:

Wildlife in Acrylics - Jackie Garner,  
Acrylic Bee and Bird- Ness Head,  
Botanical Art - Marilyn Hughes,  
Graphite drawing with colour wash-  
David Skidmore,  
Oil painting - Jackie Cox,  
Watercolour - Clair Hodges

**For more information please visit:**

**[spanglefish.com/gloucesterartsandcrafts](http://spanglefish.com/gloucesterartsandcrafts)**

Gloucester Arts & Crafts Group

**Summer**  
**School 2025**

With over 42 different Arts & Crafts courses to choose from, 1-5 days duration, there will be something for everyone. Adults only.

Venue - Newent Community School

Monday 28th July — Friday 1st August

[www.spanglefish.com/gloucesterartsandcrafts](http://www.spanglefish.com/gloucesterartsandcrafts)

For availability & booking support call Gill on 07874604952

Reg Charity No 1069039

Our monthly guide to the visual arts in the Cheltenham area.

Published by ARTEbulletin, [hello@artebulletin.co.uk](mailto:hello@artebulletin.co.uk)

## CHELTENHAM ARTS NETWORK

Enabling artists to create opportunities and address challenges facing practitioners in the town through meetings, events and sharing information. Created to support the ecology of artists and producers in the Cheltenham area.

To keep up to date on the next workshop as part of the 2025 programme please visit FB: **cheltartsnetwork**



## Create Gloucestershire [creategloucestershire.co.uk](http://creategloucestershire.co.uk)

**CREATE GLOUCESTERSHIRE** supports the cultural and creative industries in Gloucestershire and introduces new people to arts, culture and creativity.

After a website refresh, you'll find the **programmes** they are working on directly accessible from the drop-down tab in the navigation. Also added is clearer signposting to all the resources they have to share - such as **job and volunteering opportunities** and **ideas for getting into creative careers**.

Visit the website for more information, opportunities and support:

**[creategloucestershire.co.uk](http://creategloucestershire.co.uk)**

## PEGASUS ART SHOP

Griffin Mill, Thrupp, Stroud, GL5 2AZ.  
[www.pegasusart.co.uk](http://www.pegasusart.co.uk)

### PEGASUS ART - Passionate Artists Serving the Artistic Community.

An outstanding collection of art materials and supplies for both amateur and professional artists worldwide. Pegasus art specialise in fine art papers, museum quality stretcher bars and make bespoke canvases to order. You can shop online, by telephone and click and collect. Visit the website for info.

For further information on all products plus courses and workshops available,

please visit: **[pegasusart.co.uk](http://pegasusart.co.uk)**





## SAVE THE DATE

**5 – 13 July 2025**

**faropen studios & art trail**

165 artists & makers across 62 studios and shared venues waiting to welcome you into their spaces to showcase their artwork and reveal their behind-the-scenes processes.

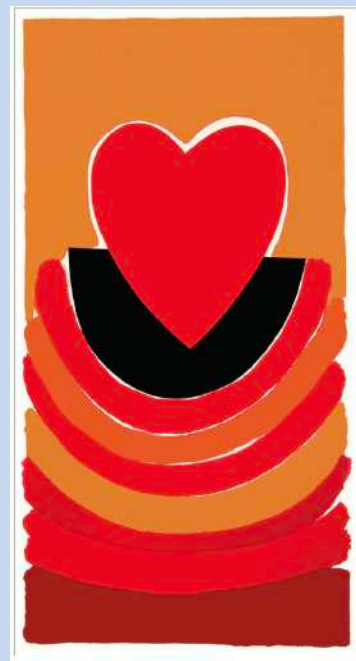
Plus, a brand new website to showcase it all!



## Support the ART Bulletin

### Become a supporter

The **ART ebulletin** has always been a free resource for artists, arts organisations and art lovers alike. It champions all forms of visual art locally, commercial or not. We don't charge for advertising, as we think it should remain an independent directory that is available to all. As its popularity grows so does the time it takes to pull it together. If you value it, are able and would like to help support the cost of producing it each month, then **please consider giving an annual donation and help keep this valuable resource viable.**



Simply visit :

**[paypal.me/artebulletin](https://paypal.me/artebulletin)**

- enter your amount and press send,

alternatively, email:

**[hello@artebulletin.co.uk](mailto:hello@artebulletin.co.uk)** and we can send out further details.