

# CHEL TENHAM ART eBULLETIN

Your monthly guide to  
the visual arts in the  
Cheltenham area

MAY 2026



Our monthly guide to the visual arts in the Cheltenham area.

Published by ARTEbulletin, hello@artebulletin.co.uk

**Sixteen Gallery**

16 Rotunda Terrace, Montpellier Street,  
Cheltenham, GL50 1SW

[sixteengallery.com](http://sixteengallery.com)

**.. until 6 May. Small Works - The Sixteen Gallery Collective.** A curated collection of affordable small pieces made by its members.

**7 – 13 May. Relative Values.** Mary F Harrison, Geoffrey Harrison and Nicky Millington present a collaboration between mother, son and daughter: all practicing artists with different styles



**14 – 20 May. Untamed Art**

Showcasing a variety of big bright and bold pieces, from colourful florals to explosive abstracts by Faye Barnes

**21 - 27 May, Unscripted** an exhibition shaped by instinct and a love of seeing where the work wants to go, Sam Waters, Morven Browne, Barbara Whitbourn and Sue Colyer



**28 May - 3 June. Ebb and Flow.** Tonia Rees and Kath Cooper bring together yet highlight the contrast between their mixed media collage work.



**Spring Gallery**

14 Rotunda Terrace, Montpellier Street,  
Cheltenham, GL50 1SW

[springcheltenham.com](http://springcheltenham.com)

**.. 12 May. Mon - Wed and Sundays, 10am - 5pm. Thurs & Fri 10am - 7pm. Final Tues until 1pm**

**MY MIND'S EYE - Jane Foot**  
Intuitive textural mixed media oil paintings



**13 - 19 May. Daily 10am - 5pm (Final Tuesday 10am - 1pm)**

**Andrew Boyd -** Moving from old master copies such as Dutch still life to his own compositions which combine renaissance, pre-Raphaelite and art deco influences. An exhibition of oil paintings, for sale for the first time in Cheltenham.



Visit [springcheltenham.com](http://springcheltenham.com) for information and news on upcoming exhibitions at the gallery

Our monthly guide to the visual arts in the Cheltenham area.

Published by ARTEbulletin, hello@artebulletin.co.uk

**Gardens Gallery**  
 Montpellier Gardens,  
 Cheltenham GL50 2XL  
[Gardensgallery.co.uk](http://Gardensgallery.co.uk)

**29 April - 4 May**

**Jazz Club exhibition** - Jazz is a genre that encourages both creativity and collaboration among musicians, leading to dynamic, unpredictable and unique performances. In this exhibition 9 Artists Collective also explores the history of jazz through words and photographs tracing its evolution across decades and around the world.



**5 - 12 May - Gallery closed for Jazz Festival breakdown**

**13 - 19**

**Brighter Days** - A group exhibition of works by Caroline Evans, Claret Claire, Andreea Dragne, Jenny Hannam and Andrew Vaughan, to include paintings, jewellery, ceramics and interior design.



**Gardens Gallery**  
 Montpellier Gardens,  
 Cheltenham GL50 2XL  
[Gardensgallery.co.uk](http://Gardensgallery.co.uk)

**20 - 26 May**

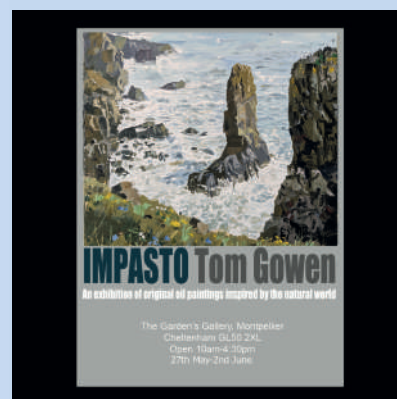
**New Faces** - An eclectic group of enthusiastic artists who get together on a Friday morning, under the guidance of their teacher, Sheila Bryant. They tackle that ultimate artistic challenge otherwise known as the portrait. This exhibition showcases the work for you to enjoy, talk about and be inspired by.



**27 May - 2 June**

**Impasto - Tom Gowan**

An exhibition of original oil paintings inspired by the natural world.



For more information on all exhibitions and what's coming up, please visit [gardensgallery.co.uk](http://gardensgallery.co.uk)

Our monthly guide to the visual arts in the Cheltenham area.  
Published by ARTEbulletin, hello@artebulletin.co.uk

**The Wilson**

Cheltenham Art Gallery and Museum  
Clarence St, Cheltenham GL50 3JT  
[cheltenhammuseum.org.uk](http://cheltenhammuseum.org.uk)

**Tuesday to Saturday 10am to 5pm,  
Sunday 10am to 4pm.**  
The Wilson Kitchen is open  
**Mon – Sat 10am - 5pm, Sun 10 - 4pm**

.. **Until 10 May**

**Paula Rego:**

**Visions of English Literature** presents three of the artist’s most ambitious and profound series of works in print making: Nursery Rhymes, Peter Pan and Jane Eyre. Created across a decade of her life, the works offer an intimate portrayal of the artist’s lifelong fascination with folklore, fairy tales and literature.



Presented by Hayward Gallery Touring, this exhibition offers audiences the chance to experience the work of an internationally celebrated artist whose bold, uncompromising vision continues to resonate today.

**Image credit:** Paula Rego, The Return, 1992, coloured etching and aquatint. Copyright Ostrich Arts Ltd | Paula Rego Estate. Courtesy Ostrich Arts Ltd and Cristea Roberts Gallery.

**The Wilson**

Cheltenham Art Gallery and Museum  
Clarence St, Cheltenham GL50 3JT  
[cheltenhammuseum.org.uk](http://cheltenhammuseum.org.uk)

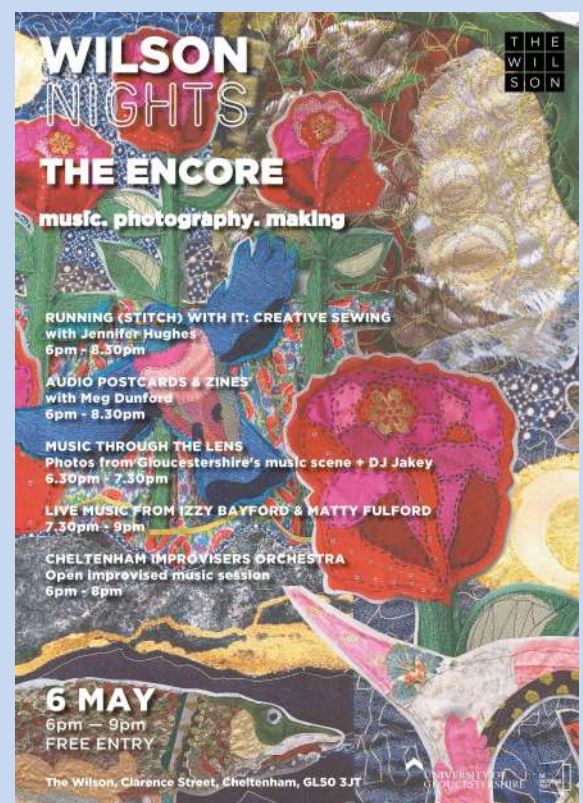
**Wednesday 6 May, 6pm - 9pm. Free entry**

**Wilson Nights: The Encore**

- 📷 Music through the lens
- 💡 DJ set + live performances
- 🧵 Creative sewing workshop
- 📖 Zine-making & audio postcards
- 🎵 Open improvised music session

An immersive evening where photography, sound and creativity collide – celebrating Gloucestershire’s music scene.

Drop in anytime.



Our monthly guide to the visual arts in the Cheltenham area.

Published by ARTEbulletin, hello@artebulletin.co.uk

**Elwes Gallery**  
**University of Gloucestershire**  
 Main Reception, Park Campus  
 Cheltenham GL50 2RH

**Friday 1 May - Thursday 21 May**  
**Monday - Friday 9am-5pm**  
**Symposium: Tuesday 12 May, 5-7pm**  
 Please book to secure your place,  
 free-of-charge  
[eventbrite.com/e/supersevern-symposium-tickets-1987398936719](https://www.eventbrite.com/e/supersevern-symposium-tickets-1987398936719)

**SuperSevern 1.0** is an exhibition of artists' responses to the river Severn, an exceptional super-river. It has an astonishing tidal range and sees an immense daily confluence of fresh and saltwater. It uniquely shapes its wider geographical region.

The exhibition brings material objects, visual and sound-based works together to offer personal, collective and imagined narratives, allowing multiple ways of knowing the river to coexist..

University of Gloucestershire researchers Jean Boyd, Katie Forrester and Susie Olczak worked collaboratively with Museum of Gloucester Programme & Exhibitions Officer Amy Washington and Museums Collections Manager Elizabeth Johansson-Hartley

**elwes gallery** is situated in the atrium of the main reception at the University of Gloucestershire's Park Campus, which is signposted from the main car park and other access points. The gallery is fully accessible.

## New Brewery Arts

Brewery Court, Cricklade St,  
 Cirencester GL7 1JH

### Raw Talent is back for 2026

Raw Talent is a celebration of making at every level, bringing together work made by our students across New Brewery Arts' courses and workshops. Raw Talent proudly shares the journeys of people discovering and developing their creative practice, and of a community learning their craft right here in our studios.

If you have taken part in a course or workshop here at New Brewery Arts since July 2024 you are eligible to apply to be part of the show.

Applications will open **27th April 2026**



For more information and what else is on, please visit:

[newbreweryarts.org.uk](https://newbreweryarts.org.uk)

Our monthly guide to the visual arts in the Cheltenham area.

Published by ARTEbulletin, hello@artebulletin.co.uk

**Showborough House  
Affordable Garden Art Exhibition  
Showborough.com**

**30 April – 14 June  
10:30am to 4pm  
Closed Monday, Tuesday, Wed**

**Showborough House  
Affordable Garden Art Exhibition**

Showborough has hosted an Affordable Garden Art Exhibition since 2008. It showcases sculpture in all media and styles by emerging and established British artists, many from Gloucestershire and surrounding counties. All work is for sale. There are over 200 pieces by about 90 artists.



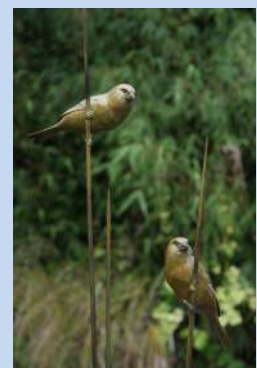
For more information, please visit : [showborough.com](http://showborough.com)

**Cotswold Sculpture Park  
The Paddocks, Somerford Keynes,  
Gloucestershire GL7 6FE**

**Open: Thu – Mon 10:30am – 5pm (last entry at 4pm). Closed Tuesdays & Wednesdays**

**£10 per adult £8 concession £7 Child (age 5 – 14).** Sorry, no dogs or picnics

**Cotswold Sculpture Park.** A unique outdoor gallery that celebrates artistic talent from around the world.



For all events and more information, please visit : [cotswoldsculpturepark.co.uk](http://cotswoldsculpturepark.co.uk)

Our monthly guide to the visual arts in the Cheltenham area.

Published by ARTEbulletin, hello@artebulletin.co.uk

### Lansdown Hall & Gallery

Stroud GL5 1BB  
[lansdownhall.org/](http://lansdownhall.org/)

**12 - 24 May , 10am – 4pm**  
**Daily 10am - 4pm | Sat 10am - 5pm |**  
**Late viewing Fri 15th 5pm -7pm**

### Stroud Artists Cooperative – Spring Exhibition

The SAC is proud to present our Spring Exhibition of work - all local artists - with some fabulous art!

Across two venues - **Lansdown Gallery** and **SubRooms in Stroud** – the SAC aim to put on another great show featuring the work of their members - all local artists.



For more information visit  
[stroudartcoop.uk](http://stroudartcoop.uk) or  
[lansdownhall.org](http://lansdownhall.org)

### The Museum in the Park

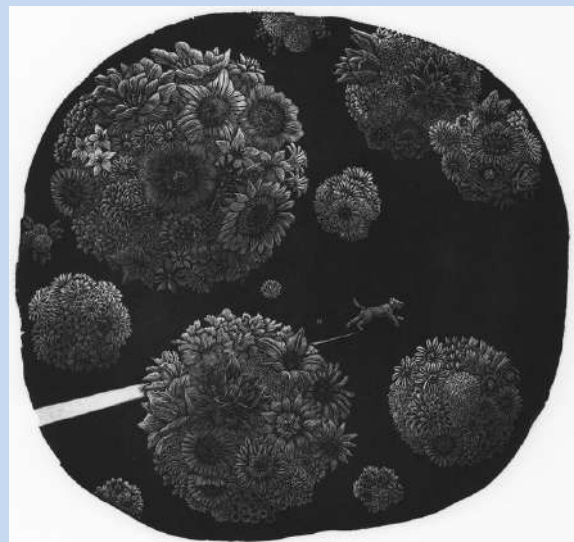
Stratford Park, Stratford Road.  
 Stroud GL5 4AF  
[museuminthepark.org.uk](http://museuminthepark.org.uk)

**5 May - 21 June, 10am - 4.30pm**  
**Admission free, works for sale.**

### The Society Of Wood Engravers’ 88th Annual Exhibition

The Society Of Wood Engravers (Swe) Represents An International Group Of Artists Who Produce Prints Using The Relief Printing Technique Known As Wood Engraving.

The Annual Exhibition features original prints which are stringently selected from an open submission. It tours several venues across the country throughout the year showcasing the best contemporary work from the United Kingdom and overseas.



Look out for pop up ‘**Meet the Artist**’ events and demonstrations - a chance to watch the fascinating process of wood engraving in action.

For further information visit  
[museuminthepark.org.uk](http://museuminthepark.org.uk)

Our monthly guide to the visual arts in the Cheltenham area.

Published by ARTEbulletin, hello@artebulletin.co.uk

**Nature in Art Museum & Art Gallery**

Main A38 Twigworth  
Gloucester GL2 9PA  
[natureinart.org.uk](http://natureinart.org.uk)

**Opening times: Tuesday - Sunday (& bank holidays) 10am - 5pm**

**12 May – 21 June**

**Crucifixion - Be Still | Be Quiet**

“The greatest thing a human soul ever does in this world is to see something and tell what it saw in a plain way. Hundreds of people can talk for one who can think, but thousands can think for one who can see. To see clearly is poetry, prophecy and religion, all in one.” John Ruskin

In seeing Darrell Warner interprets and creates natural history paintings in watercolour that may be uncomfortable at first. That is of course the intention, to arrest the viewer into a reality that they may not care to think about. And there’s the rub. In doing so, Warner alludes to a life lost yet his paintings, predominantly of our own indigenous birds are testimony to those birds’ souls continuing to sing, even in death.



**PLUS - NIA renowned artist residency programme.** with new artists every week. Come and see what they’re creating and have a chat.

For more info and what’s on, visit [natureinart.org.uk/](http://natureinart.org.uk/)

**The Gate art space**

21 Westgate Street  
Gloucester GL1 2NW  
[Gloucestercontemporaryartists.art](http://Gloucestercontemporaryartists.art)

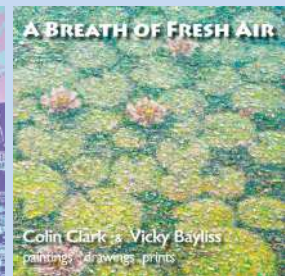
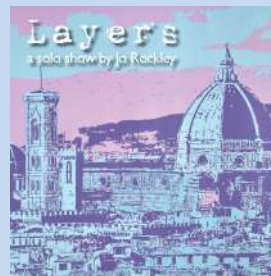
**The Gate** is an exciting, flexible and affordable place for art - a great place to get your work seen (and sold). The Gate is available for hire by artists and craftspeople. Here’s what’s coming up this month

**4 - 10 May, 10am - 3pm**

**Layers** - a solo show by paper artist Jo Rockley

**11 - 17 May, 10am - 5pm,**

**A breath of fresh air** - paintings, prints and drawings by Colin Clark and Vicky Bayliss

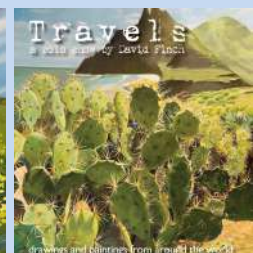


**19 - 24 May (Tues- Sat 10am - 5pm, and Sun 10am - 4pm)**

**The View From Here** - landscapes and flora by Jacqueline Hammond,

**25 - 31 May, 10am - 5pm**

**Travels** - paintings and drawings from around the world - a solo show by **David Finch.**



For more information: [gloucestercontemporaryartists.art](http://gloucestercontemporaryartists.art)

Our monthly guide to the visual arts in the Cheltenham area.

Published by ARTEbulletin, hello@artebulletin.co.uk

**Cirencester Arts Society  
Cirencester Parish Church  
Cirencester GL7 2AG**

**.. 4 May  
Opening times 10 – 4pm  
(Sunday 12pm - 4pm)**

**Fascinating Art** - An exhibition of works by local Cirencester Art Society member artists



**Saturday 16 May. 10am – 5pm  
Barnsley Village Festival**  
The Old T-Barn, Opposite The Village Pub

For more information about talks, events and how to get involved, in **The Cirencester Art Society** please visit:

[cirencesterartsociety.com](http://cirencesterartsociety.com)

**Cotswold Art Club at  
Frampton on Severn**

**23 - 31 May, 10 - 5pm  
Free Entry.**

**Cotswold Art Club's  
Spring Exhibition**

**Village Hall, The Street,  
Frampton-on-Severn GL2 7EA**

Over twenty artists will be exhibiting an exciting range of work in various styles and mediums. Browsers Welcome.



**ART  
EXHIBITION**

Frampton Village Hall, The Street,  
Frampton-on-Severn GL2 7EA

F  
R  
E  
E  
  
E  
N  
T  
R  
Y



Original Art by Local Artists

Saturday 23rd - Sunday 31st May 2026

10am - 5pm

Browsers Welcome

For more information about the club, please visit:

[cotswoldartclub.com](http://cotswoldartclub.com)

Our monthly guide to the visual arts in the Cheltenham area.

Published by ARTEbulletin, hello@artebulletin.co.uk

### GPC at 20

#### Tetbury Goods Shed

The Old Station Yard, Cirencester Rd  
Tetbury, GL8 8EY

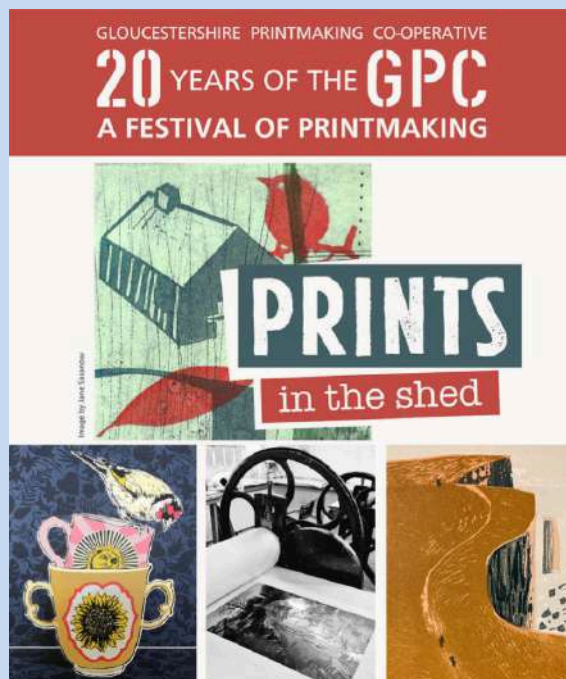
**Wed 15 Apr - Sat 23 May . FREE**  
**Open Wednesday through Sunday,**  
**10am-4pm.**

#### Open Evening

**Wednesday 6 May. 6-7:30pm**

**Enjoy a complimentary glass of fizz while taking in this new exhibition celebrating 20 years of the Gloucestershire Printmaking Co-operative**

**Prints in The Shed** celebrates this milestone with a specially curated exhibition of works that explores varied themes and includes a broad range of print disciplines, including screen printing, collagraphs, letterpress, etching, linocut and monotypes.



Sometimes the main hall may be closed for other events. Please check before travelling especially at [tetburygoodsshed.co.uk/events/exhibition-prints-in-the-shed/](http://tetburygoodsshed.co.uk/events/exhibition-prints-in-the-shed/)

### GPC

Griffin Mill, Stroud.

[www.gpchq.co.uk](http://www.gpchq.co.uk)



There are a host of external exhibitions and workshops by GPC members planned to celebrate this milestone.

**WORKSHOPS & COURSES** - For a list of current workshops including **screen-printing course**., **Foundation of printmaking 14-week course**, **screen-printing on fabric. 6-week course**, **letterpress** and more

**Tue, 5 May, 6:30 - 9.30pm**

Screen Printing on Fabric 6-week course with Anne Haworth, **£260**

**Sat 9 May – Sun 10 May 10am - 4pm**

From Drawing to Carving - Woodcut Printmaking - Workshop with Charlie Ash, **£170**

**Sun, 31 May, 10am – 4pm**

Introduction to Takuhon - Workshop with Charlie Ash, **£85**

For more information or to book a course, visit [gpchq.co.uk](http://gpchq.co.uk) or to sign up for the newsletter email [info@gpchq.co.uk](mailto:info@gpchq.co.uk)

**GPC** GLOUCESTERSHIRE  
PRINTMAKING  
COOPERATIVE

Our monthly guide to the visual arts in the Cheltenham area.

Published by ARTEbulletin, hello@artebulletin.co.uk

**Fresh Air Sculpture 2026**

Quenington  
Old Rectory, near Cirencester  
[freshairsculpture.com](http://freshairsculpture.com)

**14 June – 5 July**

Tickets are now available at [freshairsculpture.com](http://freshairsculpture.com) or can also be bought at the gate on your arrival.

**The Last Blast of Fresh Air**

**Fresh Air Sculpture** was launched in 1992 by Lucy Abel Smith and her late husband David as a biennial exhibition celebrating contemporary art in the beautiful riverside setting of their garden.

Now, Lucy and the Trustees have decided that **the 17th show, Fresh Air Sculpture 2026, is to be the last.**

With over 130 contemporary pieces of outside sculpture the show affords a unique opportunity to see a creative mixture of traditional, modern and cutting-edge sculpture in this stunning outdoor setting, many of which have been created specifically for the gardens.

The Pool House is converted into a modern gallery shop showcasing the best in contemporary design and craft – glass, textiles, leather, jewellery, ceramics and more.

**All work is available to buy at the show and commissions are welcome. All outdoor sculpture is available to view by artist online and an enquiry can be submitted.**



**Creating Spaces 2026**

The Garden at Miserden, Miserden,  
Stroud, Glos GL6 7JA

**3 June - 2 August**

**Wednesday to Sunday, 10am–5pm,**

Entry to the outdoor exhibition is included with garden admission (**£12; children free**). **Entry to indoor exhibition is free.** Accessibility: assistance dogs only in the outdoor exhibition.

**Creating Spaces 2026 Sculpture Exhibition.** This summer returns to the Garden at Miserden. An exhibition of over 200 sculptures by 72 members of the **Cotswold Sculptors Association**, set within both the Miserden Gardens and the Club Room.

Presented by the **Cotswold Sculptors Association**, the exhibition features over 100 works by artists from across the Cotswolds and beyond. Expect a rich mix of styles – from striking abstract forms to expressive figurative pieces – created in all sorts of mediums from stone and bronze to glass and textiles.



Our monthly guide to the visual arts in the Cheltenham area.

Published by ARTEbulletin, hello@artebulletin.co.uk

### Gloucestershire Guild

18 Rotunda Terrace  
Montpellier Street  
Cheltenham GL50 1SW  
[guildcrafts.org.uk](http://guildcrafts.org.uk)

**The Gloucestershire Guild** Shop is the place to buy contemporary craft in Cheltenham. You will find beautiful handmade work by our selected professional makers including contemporary jewellery, ceramics, textiles, furniture, leatherwork, glass and baskets.

#### Shop Open

**Monday - Saturday 10am - 5pm.**

Call **07562 516545** or email  
[guildcrafts.shop\\_18@icloud.com](mailto:guildcrafts.shop_18@icloud.com)

Founded in 1933, the purpose of the Gloucestershire Guild is to foster and promote fine craftsmanship and good design. These aims came out of the vibrant Arts and Crafts Movement in the Cotswolds at the turn of the 20th century.

The Guild's members are all professional makers. They are amongst the top craftspeople in the UK working across many disciplines including ceramics, glass, woodwork, textiles, jewellery and leather goods, creating unique functional and decorative objects.

Visit [guildcrafts.org.uk /pages](http://guildcrafts.org.uk/pages)



### Watch This Space

[Wtscollective.co.uk/shop](http://Wtscollective.co.uk/shop)  
[@wtscollective](https://www.instagram.com/wtscollective)

More workshops now **LIVE** in the shop

#### Evening at Hatchard's

**2 June, 6.30 - 8.30pm**

#### Hand building Mini Ceramic Jug Workshop £50 **3 spaces left**

Join award-winning ceramicist and arts educator Ros Ingram for a hands-on session making a GORGEOUS 10cm miniature milk or creamer jug

In this workshop, you will:

- Learn hand-building techniques
- Discover how to decorate your piece with coloured slips & underglazes
- Create your own beautiful jug, fired, clear glazed and returned to the venue within one month

Come with friends, or as a solo creative. Learning a new skill with our expert maker, creating something to be proud of at the end of each session.



For more information and how to book please visit: [wtscollective.co.uk/shop](http://wtscollective.co.uk/shop)

#### Next Artisan Market Date:

**14 June, 10-3pm at Dunkertons**

WTS Collective curates vibrant artisan markets alongside creative events and craft workshops, celebrating the skill, creativity and individuality of talented designer-makers.

Our monthly guide to the visual arts in the Cheltenham area.

Published by ARTEbulletin, hello@artebulletin.co.uk

**Gas Green Community Centre**  
Baker Street, Cheltenham GL51 9HQ  
[artforallmentalhealth.org.uk](http://artforallmentalhealth.org.uk)

**Gas Green Community Centre**  
Baker Street, Cheltenham GL51 9HQ  
[flowilde@hotmail.com](mailto:flowilde@hotmail.com)

**Art for All Mental Health** is an Arts and Mental Health Charity. Art for All Mental Health has a new website and has an expanded range of groups.

They aim to help people achieve sustained mental well-being through the practice of being creative. Offering a variety of groups to take part in, these include: **general painting and drawing, nature journaling and photography, craft, mindful art, women's group and printmaking.**

All classes are facilitated by experienced Arts and Mental Health tutors and are free\* to attend. This includes materials, though you are welcome to bring your own ( a voluntary contribution is suggested to help towards refreshments and materials of **£2/class**).

To enquire/apply for a place in one of their groups please visit :

[artforallmentalhealth.org.uk](http://artforallmentalhealth.org.uk)  
or contact  
[enquiries@artforallmentalhealth.org.uk](mailto:enquiries@artforallmentalhealth.org.uk)



### **Life drawing tutored session in Cheltenham**

**3rd Saturday of the month.**

**10 – 12pm - £15 session**

**New Year Dates - 16 May, 20 Jun**



**Tutor: Julie Smith** - This session is for any skills level, from novices to practicing artists, who want a supportive and stimulating environment in which to learn about the perceptions and mark-making capabilities required for making successful drawn responses from the nude figure. Julie comes with many years' experience working with artists, students and interested individuals.

#### **What should you bring to the class?**

- Pencils & charcoal, & any materials you like to use,
- A2 cartridge paper pad, drawing board, masking tape, clip, sketchbooks etc. · Erasers – plastic & putty rubber

We will be working with chairs rather than easels. You are welcome to bring your own easel if you have one.

e-mail Julie at [flowilde@hotmail.com](mailto:flowilde@hotmail.com)

Our monthly guide to the visual arts in the Cheltenham area.

Published by ARTEbulletin, hello@artebulletin.co.uk

**THE YARD**

Upper Bath Street, Cheltenham  
[theyyardartspace.com](http://theyyardartspace.com)

the **yard:ARTspace** offers a focal point for those who want to make printmaking an important part of their creative process.

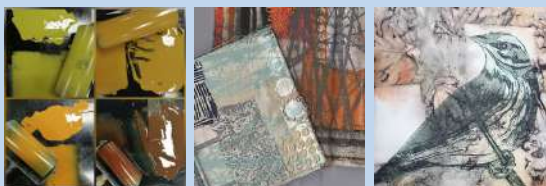
**Summer Term starts 22 April**  
**Wednesday printmaking classes,**  
**6.30 – 9pm.** Evening space available

10-week course, **1.30 – 4pm**  
**Simple Artist books with Mixed Media Techniques.** 1 space left

**16 -17 May**

**Fabric Book To Include Paper Lithograph** - Using paper lithography, acrylic resist, mono print, stitching and stencilling to name just a few of the techniques covered, create several excitingly textural textile books. At the end of the workshop, you will have created at least 2 fabric books exploring layering techniques using traditional and traditional textile materials. **£200 to incl most materials**

For all details visit  
[theyyardartspace.com](http://theyyardartspace.com) or email  
[suebrown@theyyardartspace.com](mailto:suebrown@theyyardartspace.com)



**Nicky Millington**

The Art Studio  
[cheltartstudio.com](http://cheltartstudio.com)

**Art Classes –**

**Children’s Art Club**

- Tuesday Y7 - Y9, 5 - 6.30pm
- Wednesday Y6 - Y7, 5 - 6.30pm

**£18 per week**, paid for in advance for a course of between 6 and 8 weeks.

**Adults:**

- Tues, Wed, Thurs & Fri 10am – 12pm
- Thursdays, 2 - 4pm

**£20 per week**, paid for in advance for a course of between 6 and 8 weeks.

The Art Studios art classes give adults and children the opportunity to discover and develop their creativity, increasing their skills of observation and application of a wide range of different media.



For more information and how to book, please visit: [cheltartstudio.com](http://cheltartstudio.com)

Our monthly guide to the visual arts in the Cheltenham area.

Published by ARTEbulletin, hello@artebulletin.co.uk

**The Arty Crafty Bunch.  
At Como Blend, 2 Station Mews,  
Old Station Drive, Leckhampton**

**At Como Blend, 2 Station Mews,  
Old Station Drive, Leckhampton**

**Creative Coffee**

**Every Monday, 1 - 2.30pm,**  
Nurture your creative side with a chance to natter Painting, crafting, drawing No artistic experience necessary. **£12** a session inc all materials and artisan coffee

**Monday 4 May Bank Holiday**  
(no session)

**Monday 11 May - Go Dotty with Yayoi Kusama Acrylic Painting**

**Monday 18 May - Summer Festival Flower Crowns**

**Creative Coffee will return in June**



**CREATIVE COFFEE**  
NURTURE YOUR CREATIVE SIDE WITH A CHANCE TO NATTER  
MONDAYS 1-2.30PM  
AT GYM & JOLLIES COFFEE SHOP, SOLAGE GYM., 3 STATION MEWS, OLD STATION DRIVE, LECKHAMPTON GL53 0DL

No artistic experience necessary, just come and have a go!

- ✓ Painting
- ✓ Crafting
- ✓ Drawing

FOR MORE INFO & TO BOOK FOLLOW QR CODE OR GO TO:  
www.theartycraftybunch.com or email Sarah at theartycraftybunch@gmail.com

£12 inc all materials, an artisan coffee and cake

For more information on current sessions and to book visit [theartycraftybunch.com](http://theartycraftybunch.com) or Email Sarah at [theartycraftybunch@gmail.com](mailto:theartycraftybunch@gmail.com)

**Pete Garrard  
Ceramic Courses**

**Spring Hand built pottery and ceramic sculpture course**  
**Term 3 (8 week) 20 April - 15 May and 1 June - 26 June**

The 28 hours/8-week course costs **£266 tuition**

A ceramic-hand-building course, with a wide range of sculptural or functional projects that Pete uses to guide the complete beginner through a variety of basic techniques. More experienced artists are supported in the development of their own projects. Classes are limited to a maximum of 10 and students are encouraged to develop their own style and interests. Pete is a professional tutor with extensive experience in secondary and further education and a practising artist and sculptor (1st class BA hon).

Following days and times available:

**Mondays 5.45-9.15pm**  
**Thursdays 1-4.30pm**  
**Fridays 9.30am-1pm**

Each session is 3.5 hours which gives you plenty of time to be creative and enjoy a cuppa and cake or biscuits during our break.

For more information contact: [petergarrardceramics@yahoo.com](mailto:petergarrardceramics@yahoo.com)

You can see the work of Pete and his students: **@petegarrard** or **FB @Peter Garrard Ceramics**



Our monthly guide to the visual arts in the Cheltenham area.

Published by ARTEbulletin, hello@artebulletin.co.uk

### Cheltenham School of Fine Art

32 Wellington Lane  
Cheltenham, GL52 2AG  
[cheltfineart.co.uk](http://cheltfineart.co.uk)

**23 - 27 May**

#### Wellington Lane Group Exhibition and Sale of Recent Work

The Wellington Lane Group comprise Viv Ayres, Jessie Carr and Tom Kane. All three are established artists and teach at Cheltenham School of Fine Art.



**Summer Schools & Workshop** Come and try your hand at watercolour, still life, life drawing or portrait, suitable for all levels of ability and experience. These are adult workshops and include materials.

- **Saturday 2 May, 10am - 4pm**  
Still Life in Oil and Acrylic, **£75**

- **Saturday 30 May, 10am - 4pm**  
Landscape in Oil and Acrylic, **£75**

- **Workshop 20 & 21 June** - Portrait & Life Drawing Weekend, **from £40**

#### Summer School

- **Tues 11 - Thurs 13 Aug 10am-4pm**  
Human Form, **£240**

- **18 - 20 August, 10am - 4pm.** Still Life, Abstraction & Mixed Media **£210**

For further details and booking online, please visit [cheltfineart.co.uk](http://cheltfineart.co.uk). If you have any questions call **07522 003 024** or email [cheltfineart@proton.me](mailto:cheltfineart@proton.me)

### Gemma Hastilow Art Classes

[gemmahastilow.co.uk](http://gemmahastilow.co.uk)

#### Gemma Hastilow - Art Classes

Weekly classes in Winchcombe and Bishop's Cleeve.

#### CLASSES:

- **Mondays** - Life Drawing: Hone your drawing skills working from live models.
- **Tuesdays** - Art for beginners Unleash your creativity, learning all the basics.
- **Wednesdays** - Beginners Acrylic Painting:
- **Fridays** - Watercolours for Beginners

**Saturday 9 May, 10am – 3pm**

**Weekend Watercolours.** Paint in watercolours and learn about spring's tiny treasures! **£60pp inc all materials and refreshments**

**Saturday 23 May, 10am - 4pm**

**Weekend Acrylics** - Paint your very own colourful canvas featuring the iconic Cotswold sheep. **£80 inc all materials and refreshments**

For all info, including costs and how to book on the **2026** programme of **weekend workshops, weekly classes and more**, visit [gemmahastilow.co.uk](http://gemmahastilow.co.uk)



Our monthly guide to the visual arts in the Cheltenham area.

Published by ARTEbulletin, hello@artebulletin.co.uk

## Oil Painting Tuition

[Jessicableasbyart.com](http://Jessicableasbyart.com)

### One to One Oil Painting

Private, personalised oil painting instruction tailored to your skill level and artistic goals. Perfect for beginners through to advanced artists.

Sessions led by professional painter Jessica Bleasby BA/Hons (Fine Art Painting). Flexible scheduling. In person at studio/location.

#### You will learn:

- Colour theory and mixing –
- Understanding all tools and materials and mediums
- - preparation and planning an artwork
- - painting and blending techniques and much more

Choose your area of interest, still-life, landscape or portrait. Explore your own style from gestural, impressionistic to photorealistic.

Book your first session today  
(2 hr recommended for first session)  
**£40 per hour or £70 for 2 sessions**

Call **Jessica Bleasby** on **07846478170**  
or email: [jessicableasby@hotmail.com](mailto:jessicableasby@hotmail.com)



## Alexandra Woods Art Classes

[alexandrawoods.com/shop](http://alexandrawoods.com/shop)

**At Ritual Coffee Brew Bar and Kitchen, Unit 31 - 32, Lansdown Industrial Estate, Cheltenham, GL51 8PL.**

**Wednesday 20 May, 3-5pm**

### Beginners Painting With Colour Workshop

Join this afternoon workshop and escape into a world of colour and painting. The group size is limited so that you receive plenty of individual guidance and encouragement **£30** all materials and equipment will be provided. Just book and join us!

**Saturday 23 May, 10 - 12.30pm,**

**Portrait Drawing Workshop**, Ideal for beginners. **£40pp** inc materials

**Saturday 23 May, 10 - 4pm,**

**Portrait Drawing Workshop**, Ideal for beginners. **£75pp** inc materials

**At Cheltenham Art Club, Normandy House, Cheltenham**

**Every Tuesday 2pm – 4.15pm**

Painting And Drawing workshops, for beginners **£30** inc materials

**5 May - Shadows**

**12 May - Mixing and matching colours**

**19 May - Composition for beginners**

**To book visit the website**  
[alexandrawoods.com/shop](http://alexandrawoods.com/shop)

ALEXANDRA WOODS 

Our monthly guide to the visual arts in the Cheltenham area.

Published by ARTEbulletin, hello@artebulletin.co.uk

**Nicky Harvey Workshops**  
artworks-glos.co.uk

**Nicky Harvey Workshops 2026**

The Redding's Community Centre  
Cheltenham

**6 June, 10am - 4pm**

**Chinese watercolours** with Nick Dawe. Come and explore the art of Chinese brush painting using authentic Chinese materials. This form of art is linked to nature and philosophy dating back 2000 years. You will learn authentic brush strokes and paint plum, blossom, bamboo, fish, mountains, figures and finish with a small, completed landscape. **£65 plus £10 for materials.**



Highbury Church Hall in Cheltenham  
**13 June , 10am - 4pm.**

**The Joy of leaves** with Lizzie Godden. "ecoprint" with leaves on to different types of paper, such an exciting technique, drawing out natural pigments from leaves to get stunning results. Learn an ancient way of preserving leaves, a way that means the leaves will remain supple for years. You will be able to use treated leaves to stitch into, to be creative with. **£60 plus £10 for materials.**

For More Information On All Other Workshops and Locations Coming Up

Visit **Artworks-Glos.co.uk.**  
Or call **Nicky** on **07531 837045**

**Nature Journaling**

**Nature Journaling with Debbie**

**Kersley** is a gentle, creative practice of observing and recording the natural world. Through drawing, writing and noticing, we deepen our connection to nature and to ourselves. Everyone is welcome.

- Practice simple drawing & observation skills
- Create a personal record of the seasons
- Grow creativity and mindfulness
- Slow down and notice more

**\* At Debbie's studio in Cheltenham (GL53), with time in the garden when weather is good. 4-week block: £55, Single sessions: £15**  
**Mondays 6:30-8:30pm**  
**Tuesdays 10:30-12:30pm**  
**Wednesdays 6:30-8:30pm**

**\* Monthly 'Oak Hour' on Lott Meadow (GL53): Free/ Pay what you can. Next class is Weds 13 May 12 – 1pm**

**\* Next workshop is Monday 18th May NEW! Workshops at Westonbirt Arboretum.** A series of half-day and day sessions spent outdoors sketching and journaling the wonderful trees at Westonbirt, based at the immersive Community Shelter in Silk Wood. All materials provided, sliding scale ticket prices. Full details and booking here: [buytickets.at/debbiekersley](http://buytickets.at/debbiekersley)

[hello@debbiekersley.co.uk](mailto:hello@debbiekersley.co.uk) or  
**07971 106157**



Our monthly guide to the visual arts in the Cheltenham area.

Published by ARTEbulletin, hello@artebulletin.co.uk

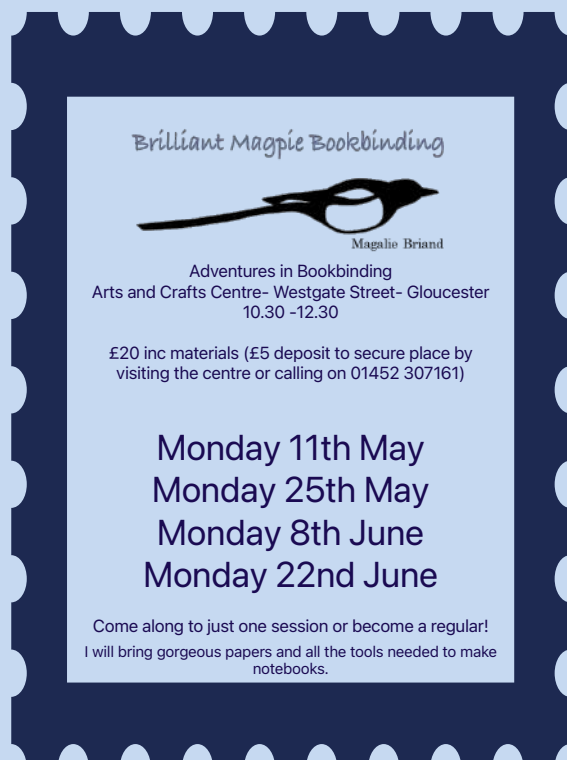
### Brilliant Magpie Bookbinding Workshops

#### Adventures in Bookbinding Workshops, with Magalie Briand 10.30am – 12.30pm

Arts and Crafts Centre, Westgate Street, Gloucester

**£20 inc materials, (£5 deposit to secure your place)**

Join Magalie from Brilliant Magpie to create your own notebook or sketchbook. Magalie has 10 years bookbinding experience and is a full time professional bookbinder artist.



To book, visit the Centre or call  
**01452 307161**

### Creative Age Call for volunteers

**Creative Age** are looking for new volunteers to join their friendly team and help support the Creative Age sessions in Cheltenham.

Creative Age is an arts-based, social community project for people living with a dementia (PLWD) and their carers who live independently in Cheltenham and surrounding areas.



They are looking for volunteers to help

- assisting with refreshments and setting up the tearoom
- welcoming attendees on arrival and making sure they leave safely
- interacting and socialising with the group over refreshments
- supporting individuals who are living with dementia (particularly anyone who attends without a carer/supporter) within the creative session. This may include helping individuals struggling with a specific task or activity, assisting with setting up/tidying up the hall, handing out props or resources, or helping lead small group discussions.

For more information, please contact Louise or Alison from the Creative Age team via the CA hotline: **07579 094776** or email [openarsartists@gmail.com](mailto:openarsartists@gmail.com)

Our monthly guide to the visual arts in the Cheltenham area.

Published by ARTEbulletin, hello@artebulletin.co.uk

**The Arts Society, Cheltenham**  
[theartssocietycheltenham.org.uk](http://theartssocietycheltenham.org.uk)

**The Pavilion, Hatherley Lane,  
 Cheltenham GL51 6PN**

**Tuesday 12 May at 7.15pm**

**Lecture: George Villiers The Duke of  
 Buckingham: The Handsomest Man  
 in 17<sup>th</sup> Century Europe**

**Lecturer: Lucy Hughes-Hallett**

A king's favourite who amassed a great art collection. George Villiers, Duke of Buckingham, was the favourite of King James I - who addressed him as 'my sweet child and wife' - and subsequently chief minister to King Charles I. Buckingham was a beauty, and he surrounded himself with beautiful things.

He was a discerning patron. Inigo Jones renovated his houses. John Tradescant was his garden designer. At the age of 35 Buckingham was murdered. His collection was scattered, but contemporary inventories allow us to reconstruct it.

This lecture will show you some of the magnificent paintings he owned and portraits of himself that he commissioned from painters including Van Honthorst, Van Dyck and Rubens. The lecture is free to members and visitors are welcome for a fee of **£8**

**Cafe Arts** is a regular informal, morning social event, held at The Bowling Club, Suffolk Square Cheltenham GL50 2DX and will recommence in **Sept '26**. Open to both members and visitors for a cost of £6 for unlimited coffee and delicious biscuits

For more information contact  
[info.cheltenham@theartssociety.org](mailto:info.cheltenham@theartssociety.org)

**The Arts Society, Painswick**  
[theartssocietypainswick.org](http://theartssocietypainswick.org)

Beacon Hall

The Painswick Centre, Bisley Street  
 Painswick, Stroud, GL6 6QQ

**Thursday 14 May, 11am**

**Tales from Vienna**

**Emma Johnson**

Mozart, Haydn, Gluck, Beethoven, Schubert, Brahms, Strauss, Mahler, Bruckner, Schoenberg – it reads like a list of the great and good in classical music – but the amazing thing is that every one of these musical geniuses lived and worked in Vienna.

With slides showing Viennese art and architecture as well as audio excerpts by Mozart, Beethoven, Brahms, Schubert, Johann Strauss and Mahler, this talk brings Vienna in its heyday to life.

Guests are welcome for a fee of **£10**.

For more information, please contact  
[Painswick@theartssociety.org](mailto:Painswick@theartssociety.org)



Our monthly guide to the visual arts in the Cheltenham area.  
Published by ARTEbulletin, hello@artebulletin.co.uk

**Plein Air Competition  
Rococo Garden PAINSWICK  
2026**

**Painswick Rococo Garden  
Registration is NOW LIVE  
Saturday 16 May 10am – 4pm**

The beauty of Painswick Rococo Garden never stops inspiring. From the changing colours of the seasons to the hidden corners and intricate details, there’s something here for artists at every time of year – and endless perspectives to explore.

With an artist’s residency as part of the prizes it’s a great opportunity for you to join the third plein air painting competition at the gorgeous Painswick Rococo Garden, with prizes to be won. **Registration is still OPEN to grab a last minute spot.**



Call For Entries **En Plein Air Art Competition**

Painswick Rococo Garden  
Saturday 16 May  
10am - 4pm

Image credit: Overall Winner 2025: Mark Owen

Painswick Rococo Garden WTS

For more information, please visit:  
[wtscollective.co.uk/plein-air-competitions](https://wtscollective.co.uk/plein-air-competitions)



**Plein Air Competition  
CHELTENHAM  
2026**

**PLEIN AIR CHELTENHAM  
Registration is NOW LIVE  
Saturday 6 June 2026, 10am – 4pm**

The third plein air ART competition, in the beautiful surroundings of Montpellier Gardens, with prizes to be won. And an opportunity to paint in a more urban setting, to include Montpellier Street, with an urban prize to compliment this extension, sponsored by The Arts Society, Cheltenham



**REGISTRATION IS NOW OPEN**

**EN PLEIN AIR ART COMPETITION 2026**  
MONTPELLIER, CHELTENHAM

**SATURDAY 6 JUNE - 10AM - 5PM**  
Open to all abilities.

organised by  
**WATCH THIS SPACE**

For more information, please visit:  
[wtscollective.co.uk/plein-air-competitions](https://wtscollective.co.uk/plein-air-competitions)



Our monthly guide to the visual arts in the Cheltenham area.

Published by ARTEbulletin, hello@artebulletin.co.uk

## Cheltenham Arts Network

To keep up to date, on future events, please visit FB: **Cheltartsnetwork** or if you'd like to join our mailing list or have suggestions for future meetings, contact

[cheltartsnetwork@gmail.com](mailto:cheltartsnetwork@gmail.com)



Enabling artists to create opportunities and address challenges facing practitioners in the town through meetings, events and sharing information. Created to support the ecology of artists and producers in the Cheltenham area.

## Create Gloucestershire [creategloucestershire.co.uk](http://creategloucestershire.co.uk)

**CREATE GLOUCESTERSHIRE** supports the cultural and creative industries in Gloucestershire. You'll find the **programmes** they are working on directly accessible from the drop-down tab in the navigation. Also added is clearer signposting to all the resources they have to share - such as **job and volunteering opportunities** and **ideas for getting into creative careers**.

Visit the website,  
[creategloucestershire.co.uk/the-noticeboard](http://creategloucestershire.co.uk/the-noticeboard)

## Jackson's Art Store

Griffin Mill, Thrupp, Stroud, GL5 2AZ  
**01453 886 560 / [jacksonsart.com](http://jacksonsart.com)**

**Open from Monday – Saturday  
9am – 5pm. Please do go and visit**

**NEWS!** Since January, Pegasus Art is now a **Jackson's Art store**

Housed in the 18<sup>th</sup> century mill building, rich with creative heritage and in the heart of the Cotswolds, they will continue to go from strength to strength.

Now managed by Sarah Edmonds and the knowledgeable team, they are excited to offer an even wider range of products at competitive prices, including a growing programme of art classes and workshops.

Please call ahead if you have a specific art materials request or would like to talk to one of the staff about classes and workshops on **01453 886 560**



Our monthly guide to the visual arts in the Cheltenham area.  
Published by ARTEbulletin, hello@artebulletin.co.uk

## Cheltenham JAZZ Festival

**29 April – 4 May 2026**

...**around town** will return for the 2026 **Cheltenham Jazz Festival**, bringing the best of local talent to venues across Cheltenham—completely free of charge. This dynamic programme showcases an exciting mix of performances, from intimate pop-up shows in pubs and bars to vibrant acts in unexpected spaces around town. With 70+ artists, it's your chance to discover fresh talent, support emerging artists and maybe even catch a future headliner.

### What is ...around town?

...**around town** is a vibrant talent development initiative by Cheltenham Festivals, supported by Cheltenham BID, designed to showcase local and emerging artists.

Be part of the movement that keeps world-class culture open and accessible to everyone in our community.

[cheltenhamfestivals.org/our-projects/around-town/cheltenham-jazz-festival-around-town](https://cheltenhamfestivals.org/our-projects/around-town/cheltenham-jazz-festival-around-town)



## Support the ART Bulletin

### BECOME A SUPPORTER

The **ART ebulletin** has always been a free resource for artists, arts organisations and art lovers alike. It champions all forms of visual art locally, commercial or not. We don't charge for advertising, as we think it should remain an independent directory that is available to all. As its popularity grows so does the time it takes to pull it together. If you value it, are able and would like to help support the cost of producing it each month, then **please consider giving an annual donation and help keep this valuable resource viable.**

Simply visit :

[paypal.me/artebulletin](https://paypal.me/artebulletin)

- enter your amount and press send.

alternatively, email:

[hello@artebulletin.co.uk](mailto:hello@artebulletin.co.uk) and we can send out further details.



The April Cover by Anna Lansley